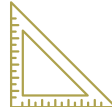




1006 S 34<sup>th</sup> ST  
Norfolk, NE



1,000-2,500 SF +/-



For Lease

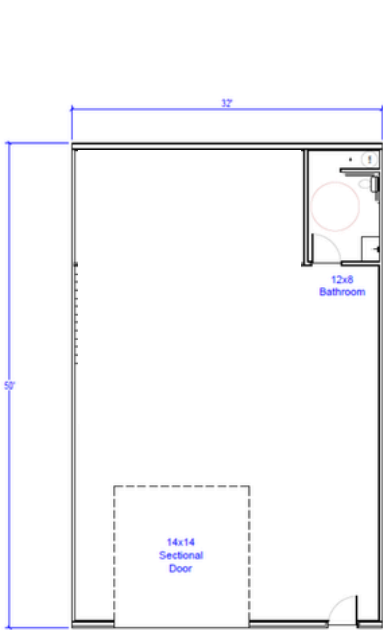
## LOCATION

Our Norfolk shop spaces are perfect for businesses, hobbyists, or anyone needing extra room. Designed with flexibility in mind and built with premium features, these spaces will offer a secure and functional environment for work, storage, or projects.

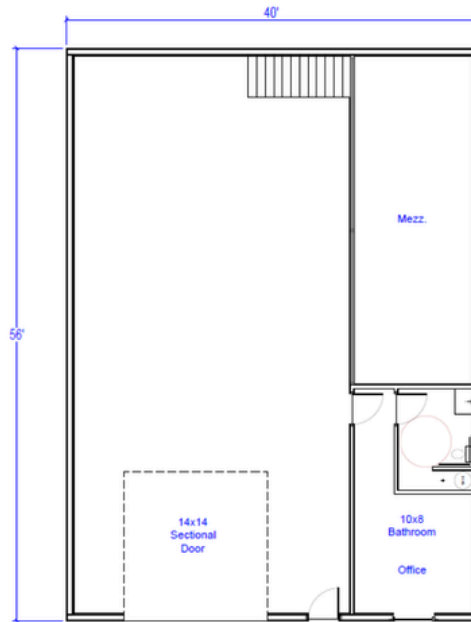
## DESCRIPTION

- Heated Shops
- Private ADA Bathroom
- Office with A/C
- Large Overhead Door
- Floor Drain
- Epoxy Floors
- Water/Sewer
- Large Paved Lot
- Internet Hookup
- Liner Steel Finish with LED Lighting
- Security Cameras Onsite
- Mezzanine Available in some units
- Climate Controlled Offices in some units
- Camper Hookup & Numerous Outlets

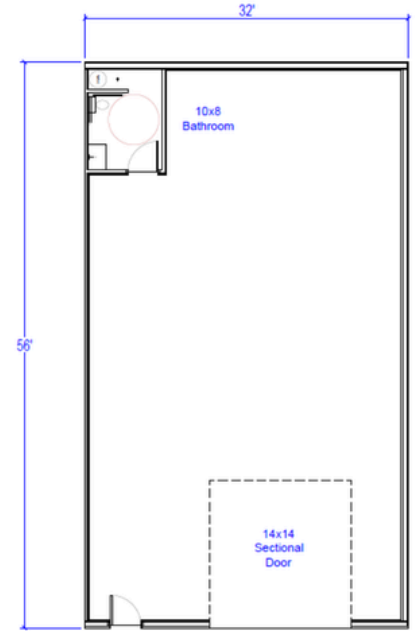
## FLOOR PLAN



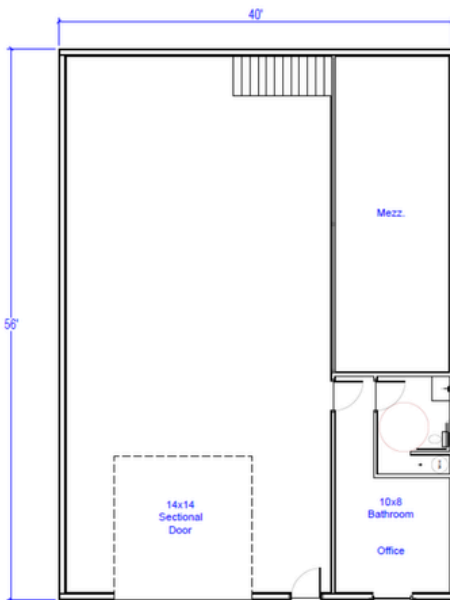
Building 1 - 32x50  
(1,600 sq ft)



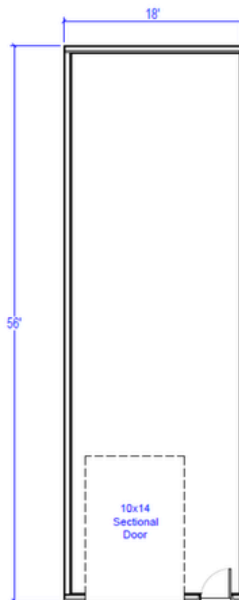
Building 2 - 40x56  
(2,240 sq ft)



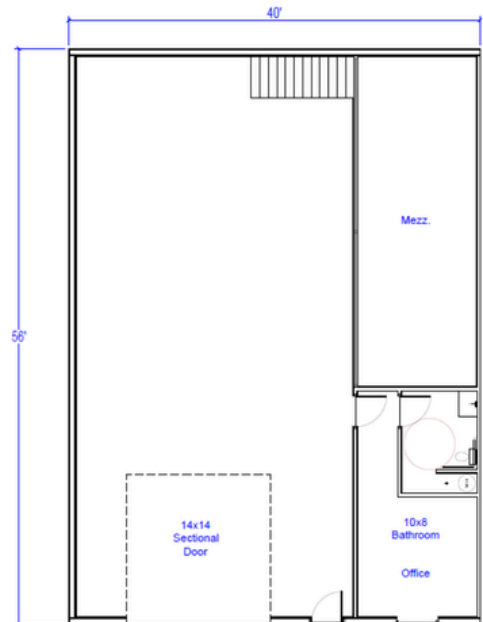
Building 2 - 32x56  
(1,792 sq ft)



Building 3 - 40x56  
(2,240 sq ft)

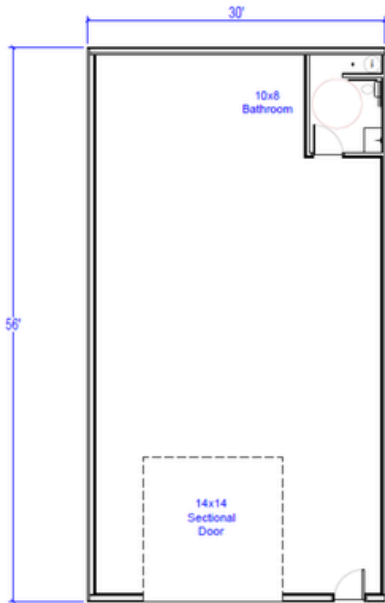


Building 3 - 18x56  
(1,008 sq ft)

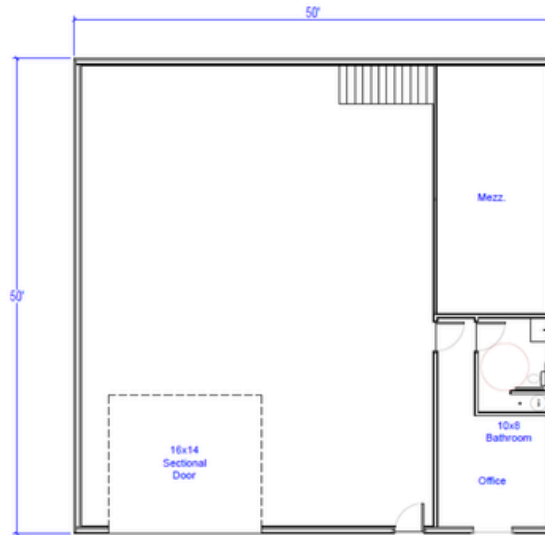


Building 4 & 5 - 40x56  
(2,240 sq ft)

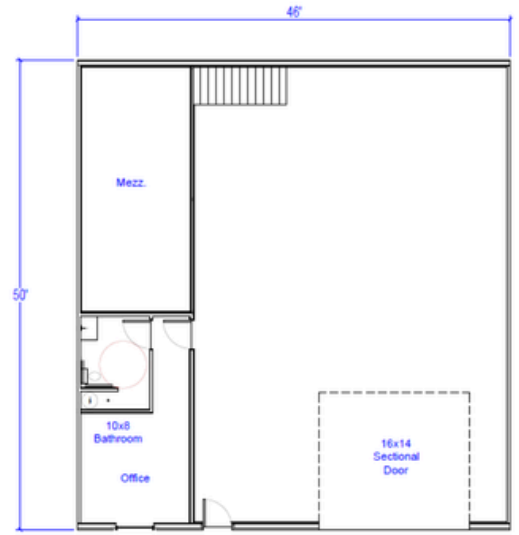
## FLOOR PLAN



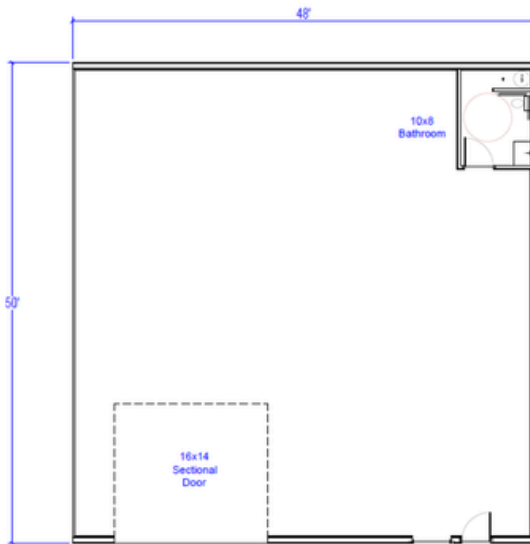
Building 4 & 5 - 30x56  
(1,680 sq ft)



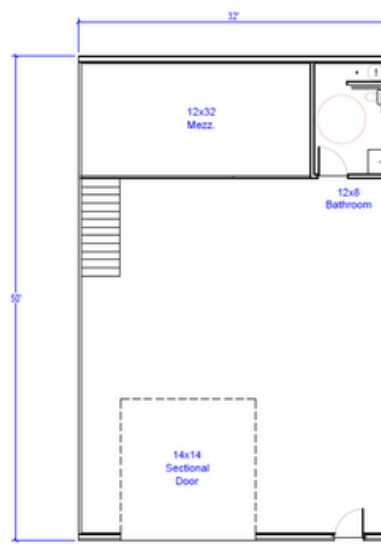
Building 6 - 50x50  
(2,500 sq ft)



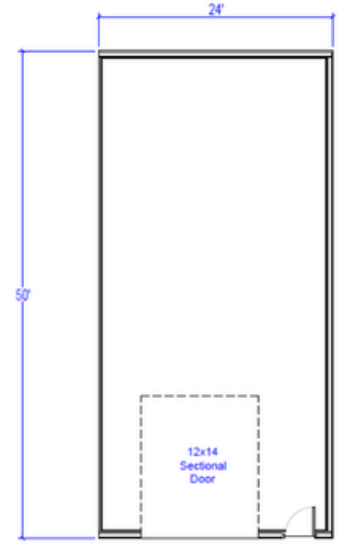
Building 6 - 46x50  
(2,300 sq ft)



Building 6 - 48x50  
(2,400 sq ft)



Building 6 - 32x50  
(1,600 sq ft)



Building 6 - 24x50  
(1,200 sq ft)

## FACILITY LAYOUT

BUILDING 1  
(14,400 SQFT)

BUILDING 2  
(17,920 SQFT)

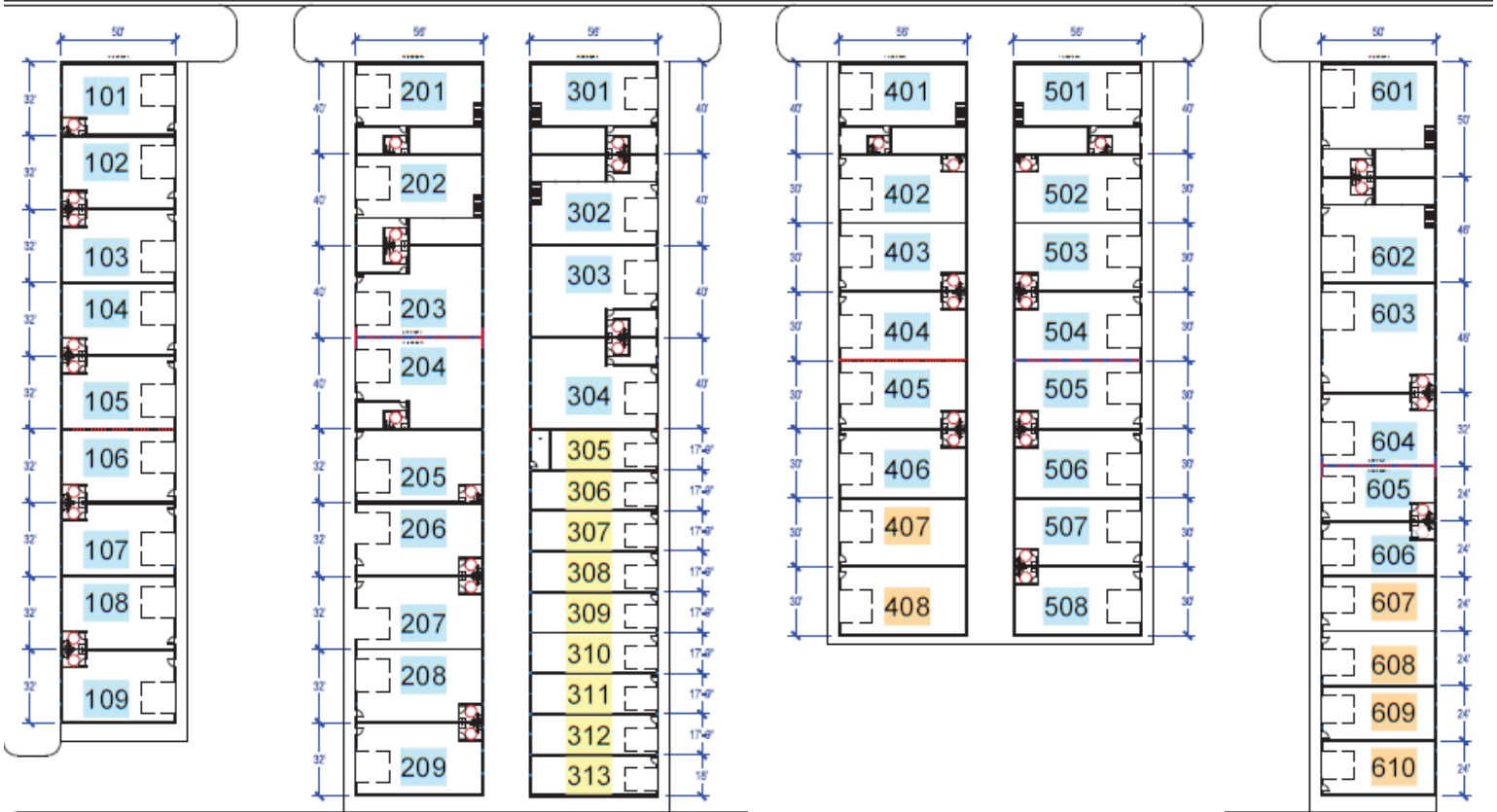
BUILDING 3  
(17,920 SQFT)

BUILDING 4  
(14,000 SQFT)

BUILDING 5  
(14,000 SQFT)

BUILDING 6  
(16,000 SQFT)

S 34TH ST



Units with Heat and Water / Sewer

Units with Heat only

Units with no Water & Heat Prep only

## PHOTO GALLERY

\*finishes may not be exact

