



1006 S 34th ST
Norfolk, NE



896-2,800 SF +/-



For Lease

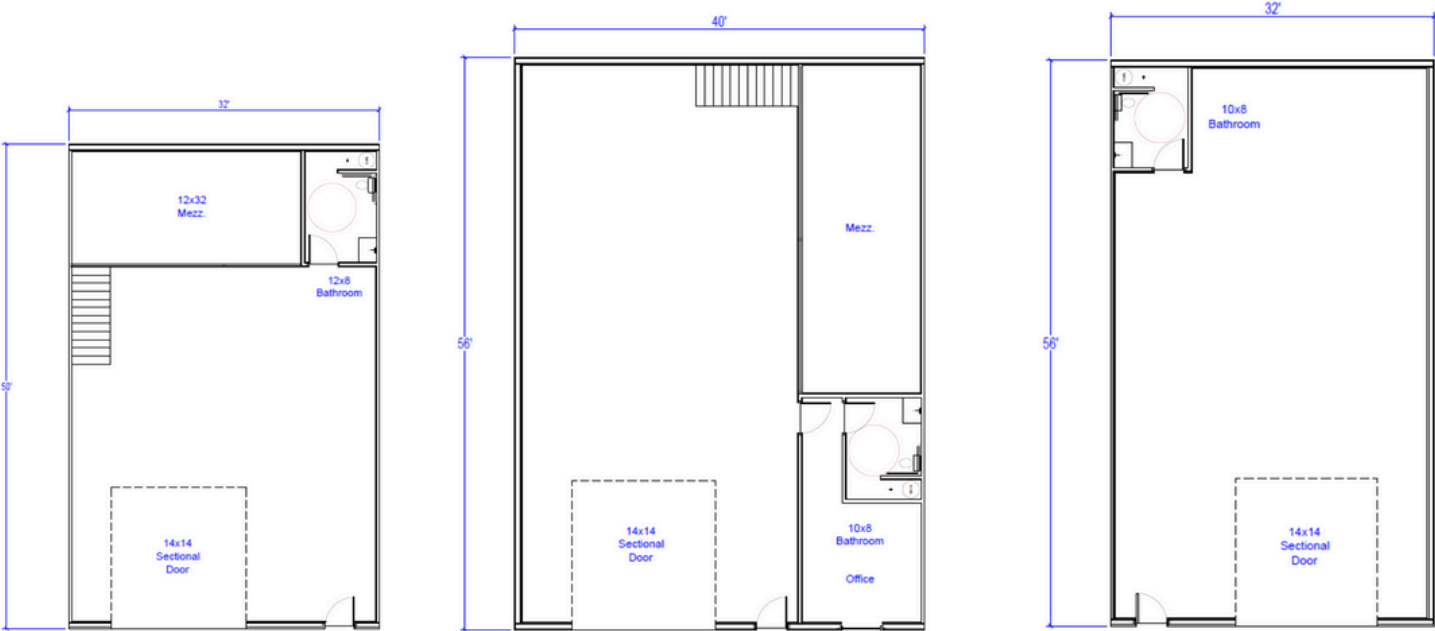
LOCATION

Our Norfolk shop spaces are perfect for businesses, hobbyists, or anyone needing extra room. Designed with flexibility in mind and built with premium features, these spaces will offer a secure and functional environment for work, storage, or projects.

DESCRIPTION

- Heated Shops
 - Private ADA Bathroom
 - Large Overhead Door
 - Floor Drain
 - Epoxy Floors
 - Water/Sewer
 - Paved Lot
 - Internet Hookup
 - Liner Steel Finish
 - Security Cameras Onsite
 - Mezzanine Available in some units
 - Climate Controlled Offices in some units
 - 200 AMP Panel with Camper Hookups
- *Options to build to suit available!
Additional fees may be applied.

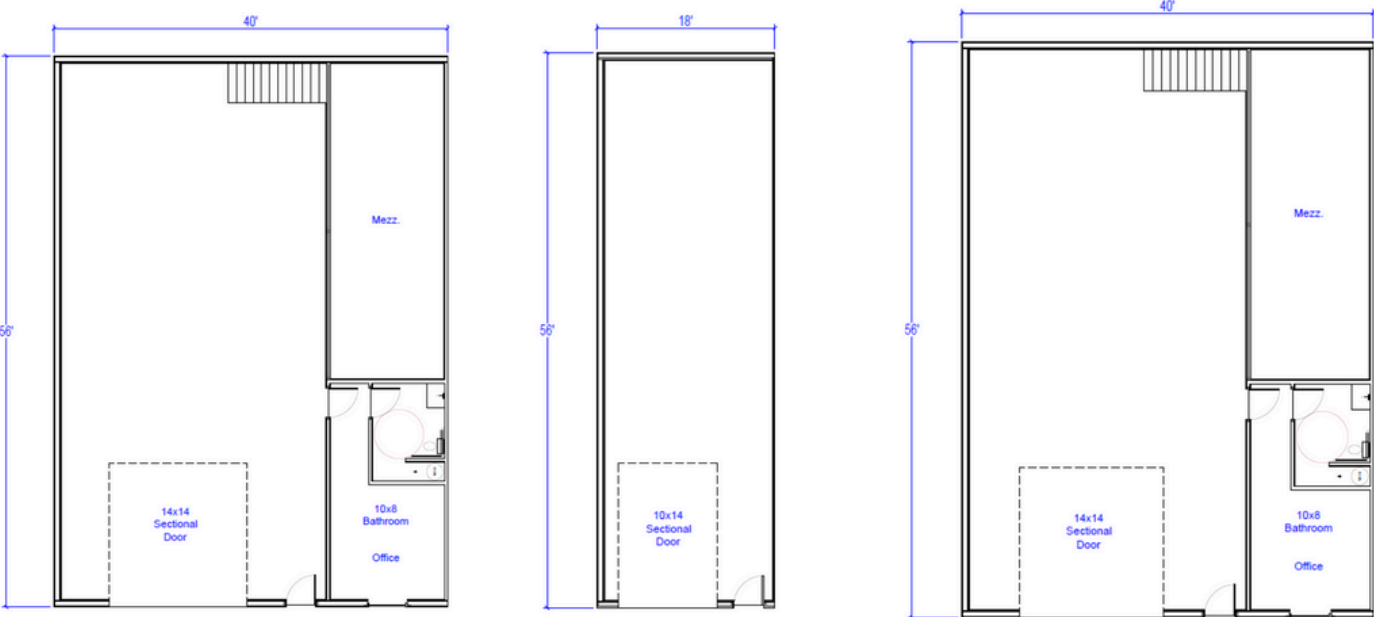
FLOOR PLAN



Building 1 - 32x50
(1,600 sq ft)

Building 2 - 40x56
(2,240 sq ft)

Building 2 - 32x56
(1,792 sq ft)

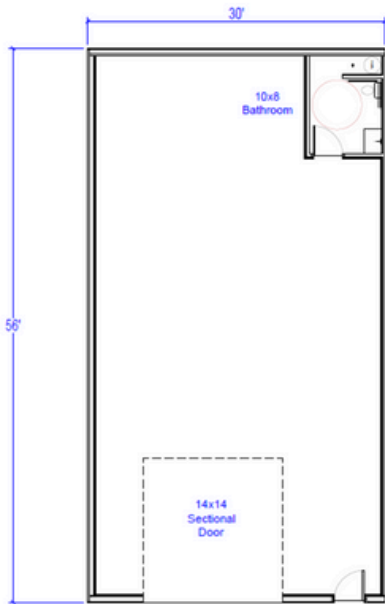


Building 3 - 40x56
(2,240 sq ft)

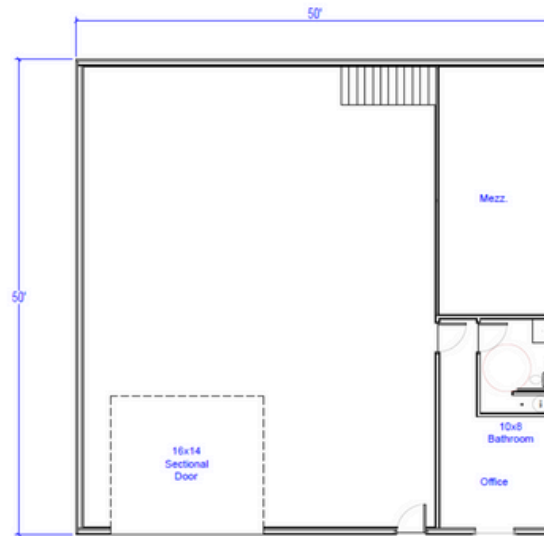
Building 3 - 18x56
(1,008 sq ft)

Building 4 & 5 - 40x56
(2,240 sq ft)

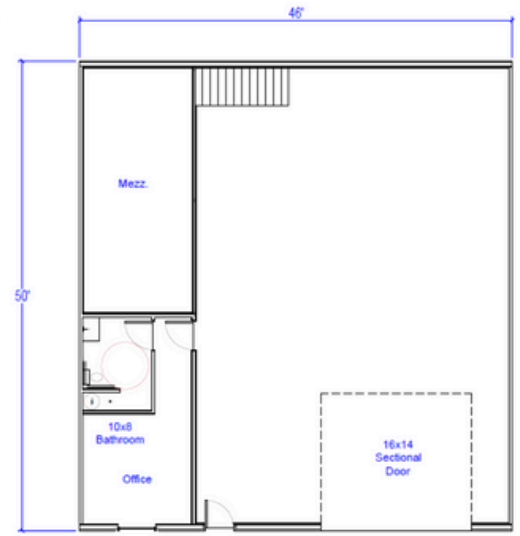
FLOOR PLAN



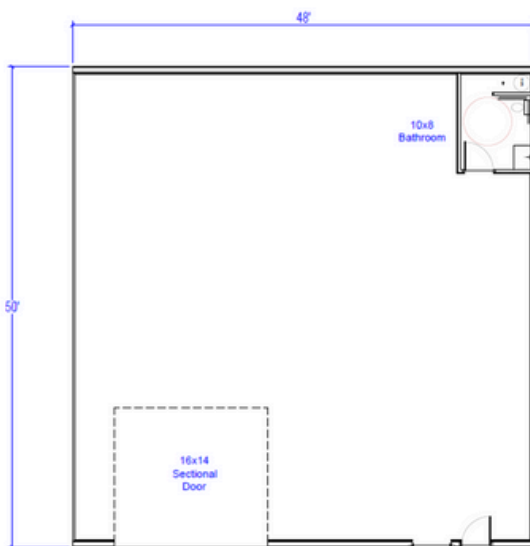
Building 4 & 5 - 30x56
(1,680 sq ft)



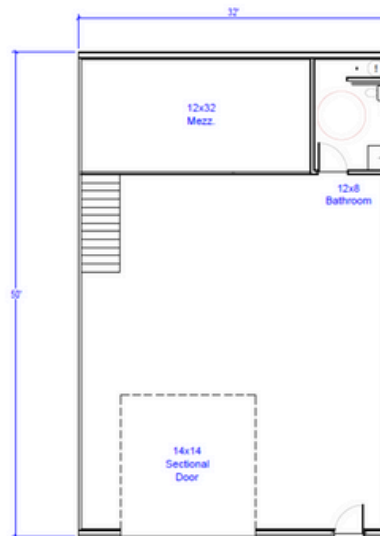
Building 6 - 50x50
(2,500 sq ft)



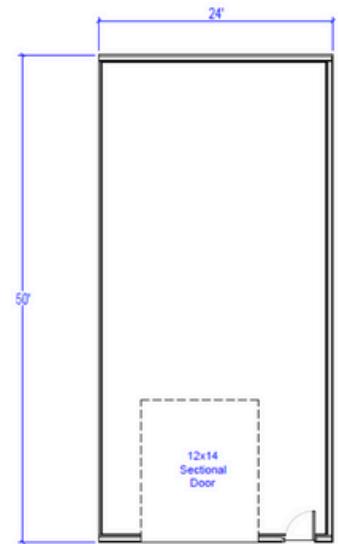
Building 6 - 46x50
(2,300 sq ft)



Building 6 - 48x50
(2,400 sq ft)



Building 6 - 32x50
(1,600 sq ft)



Building 6 - 24x50
(1,200 sq ft)

FACILITY LAYOUT

BUILDING 1 (14,400 SQFT) BUILDING 2 (17,920 SQFT) BUILDING 3 (17,920 SQFT) BUILDING 4 (14,000 SQFT) BUILDING 5 (14,000 SQFT) BUILDING 6 (16,000 SQFT)

S 34TH ST

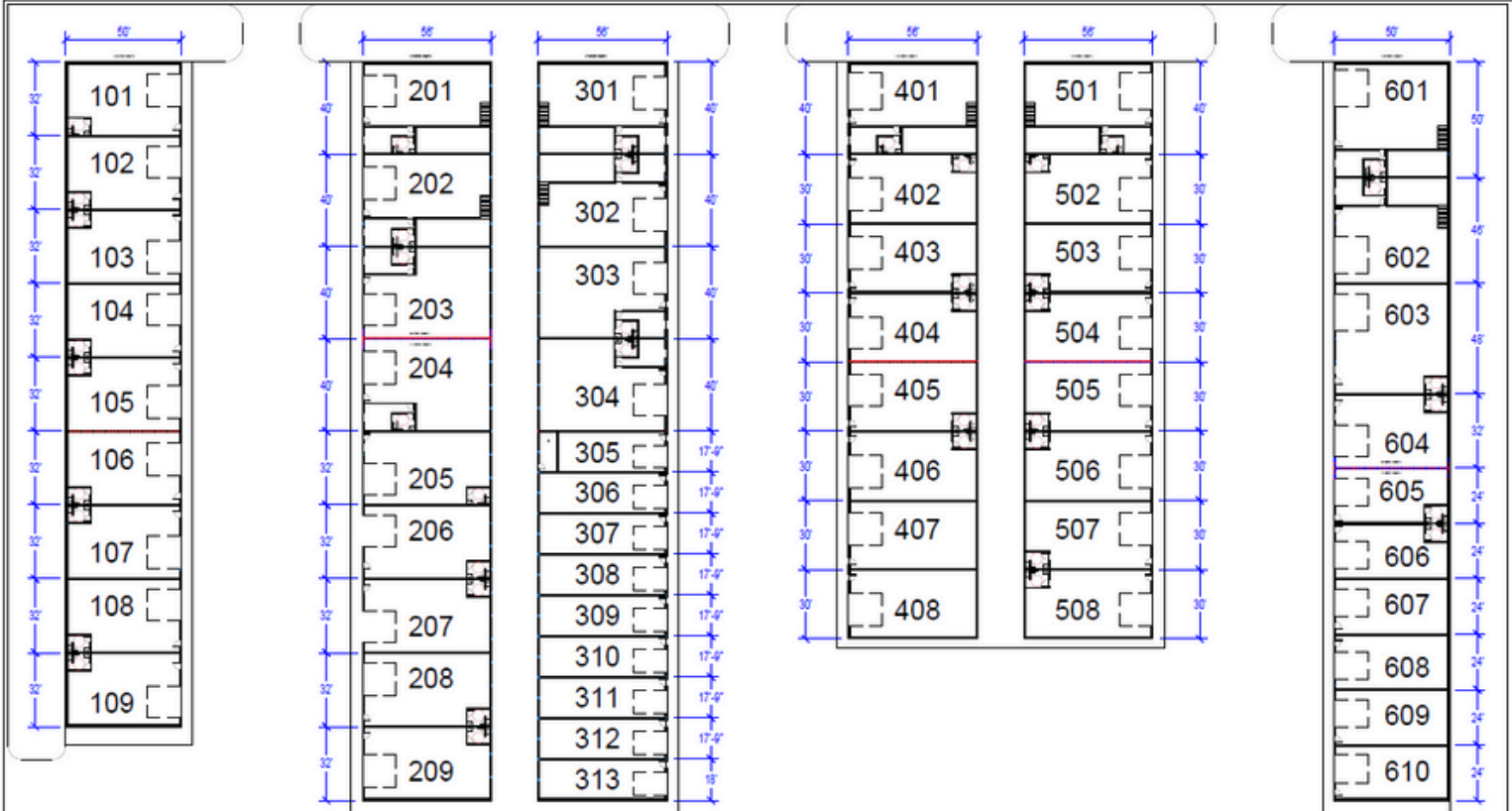


PHOTO GALLERY

***finishes may not be exact**

