



4801 Maloney Ave NE
Aberdeen, SD



800-2,400 SF +/-



For Lease

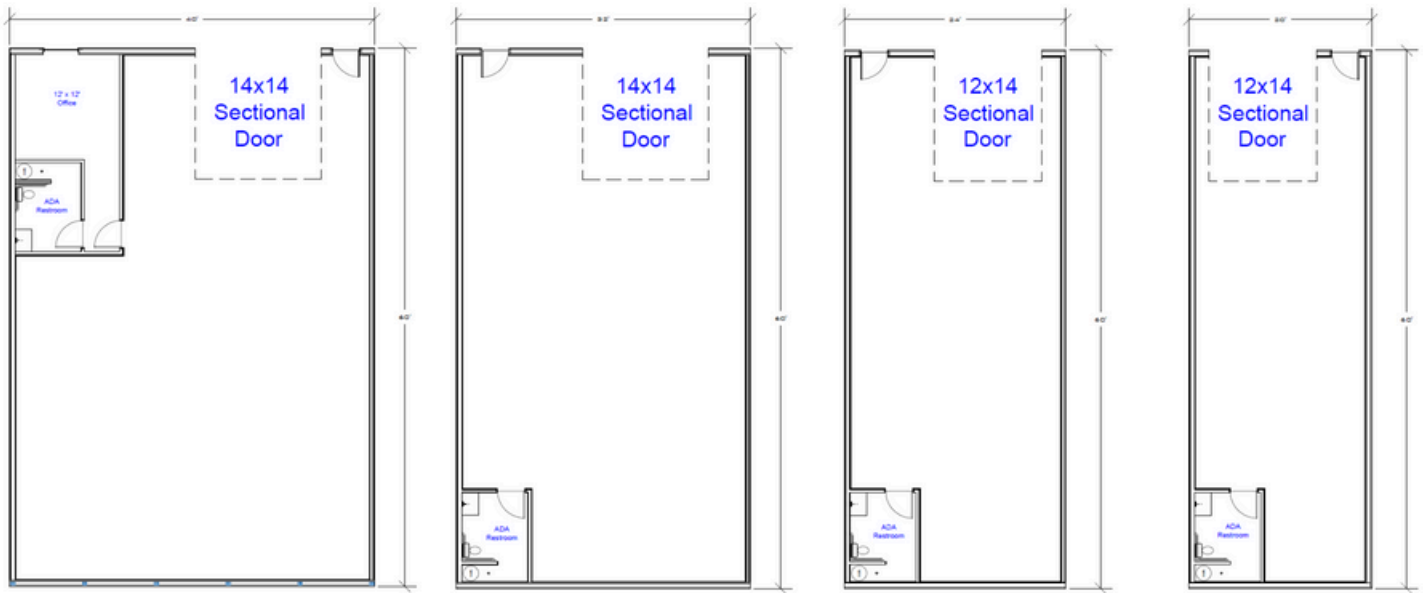
LOCATION

Situated in a prime area of Aberdeen, our premium shop spaces offer the perfect location for businesses, hobbyists, or anyone in need of extra space. With convenient access and a central position, these spaces provide a secure and flexible environment for work, storage, or projects.

DESCRIPTION

- Heated Shops
 - Private ADA Bathroom
 - Large Overhead Door
 - Floor Drain
 - Epoxy Floors
 - Water/Sewer Included
 - Paved Lot
 - Metered Electrical
 - Liner Steel Finish
 - Security Cameras Onsite
 - Climate Controlled Offices in some units
 - 200 AMP Panel
 - Mezzanines with Metal Stairs
- Additional fees may apply
- *Options to build to suit available!
Additional fees may be applied.

FLOOR PLAN



40x60
(2,400 sq ft)

32x60
(1,920 sq ft)

24x60
(1,440 sq ft)

20x60
(1,200 sq ft)



40x50
(2,000 sq ft)

32x50
(1,600 sq ft)

24x50
(1,200 sq ft)

20x50
(1,000 sq ft)

FACILITY LAYOUT

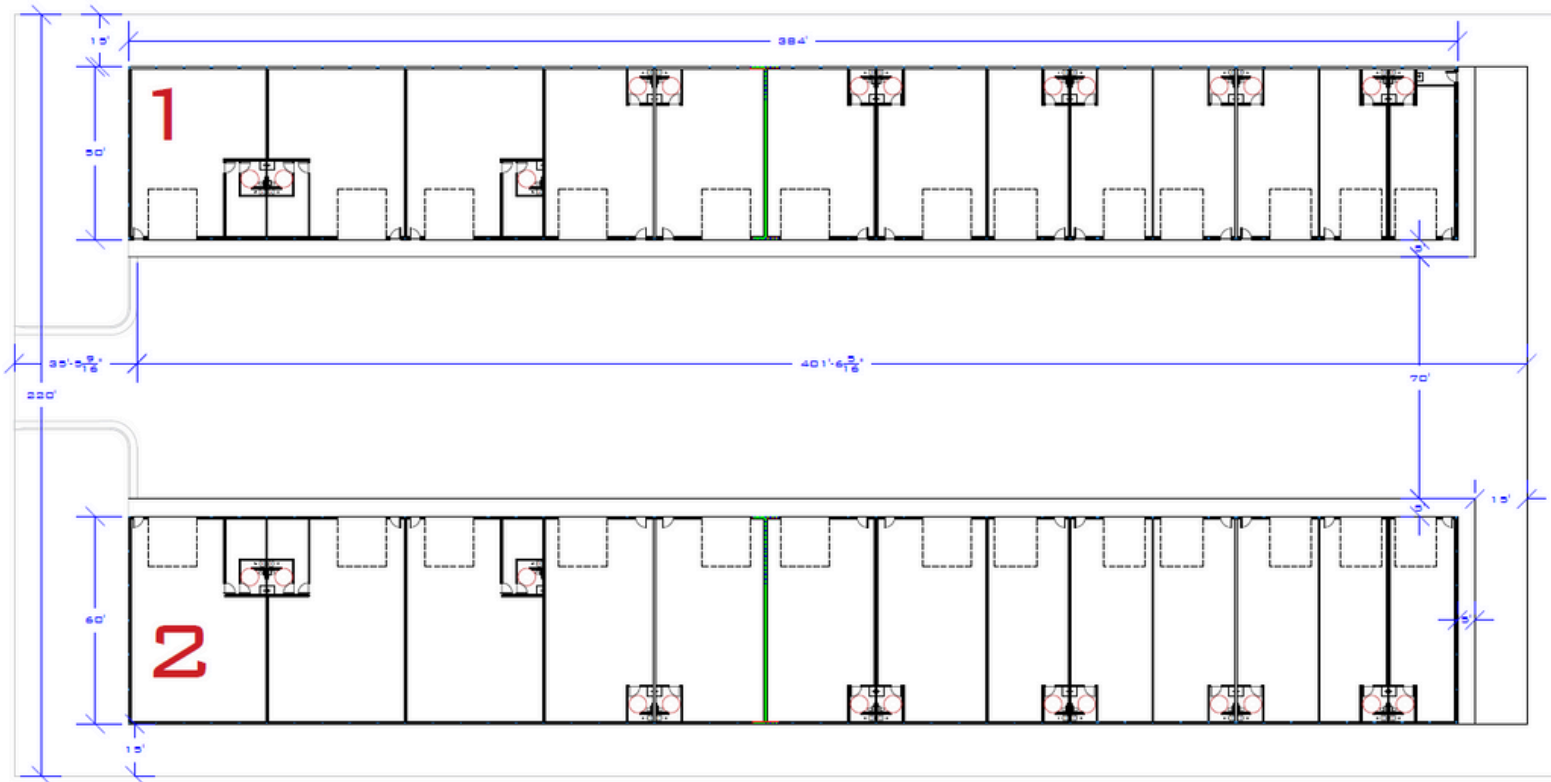


PHOTO GALLERY

***finishes may not be exact**

