

# BRAVI

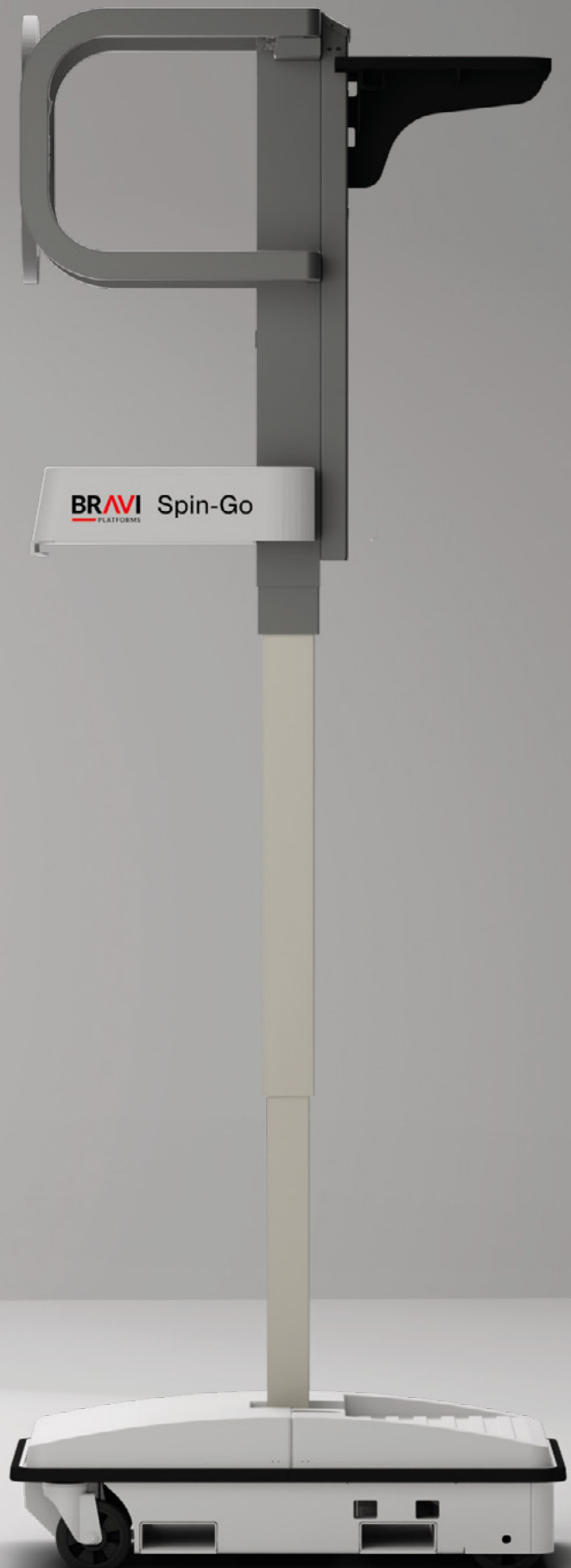
---

## PLATFORMS

### Spin-Go

**Compact. Efficient.  
Essential.**

With manual push and motorized lifting system, Spin-Go replaces ladders and traditional methods, ensuring efficiency and safety in every picking operation.



## Bravi Platforms: innovation and safety for over 40 years.

Bravi Platforms is the leader in solutions for working at low heights, developing innovative mobile platforms able to ensure safety, efficiency and maximum productivity in every industry. The company was born from the intuition of Pierino Bravi, who has transformed an operational need into a pioneering innovation. For over 40 years, Bravi Platforms has been developing compact, maneuverable and durable products that guarantee high performance levels in every industrial environment, from logistics to maintenance.

With a production entirely made in Italy and an approach based on research and continuous improvement, Bravi Platforms is today a global point of reference, with a presence in 48 countries and serving more than 740 customers. Every platform is designed to reduce working time, increase operator safety and maximize operational efficiency. From design phase to production, the company combines craftsmanship and technology, ensuring high quality standards and quick and efficient after-sales support.

## Spin-Go: Efficiency and versatility for every environment.

The ideal platform for shelf restocking, setting up and cleaning of commercial spaces.

### Spin-Go

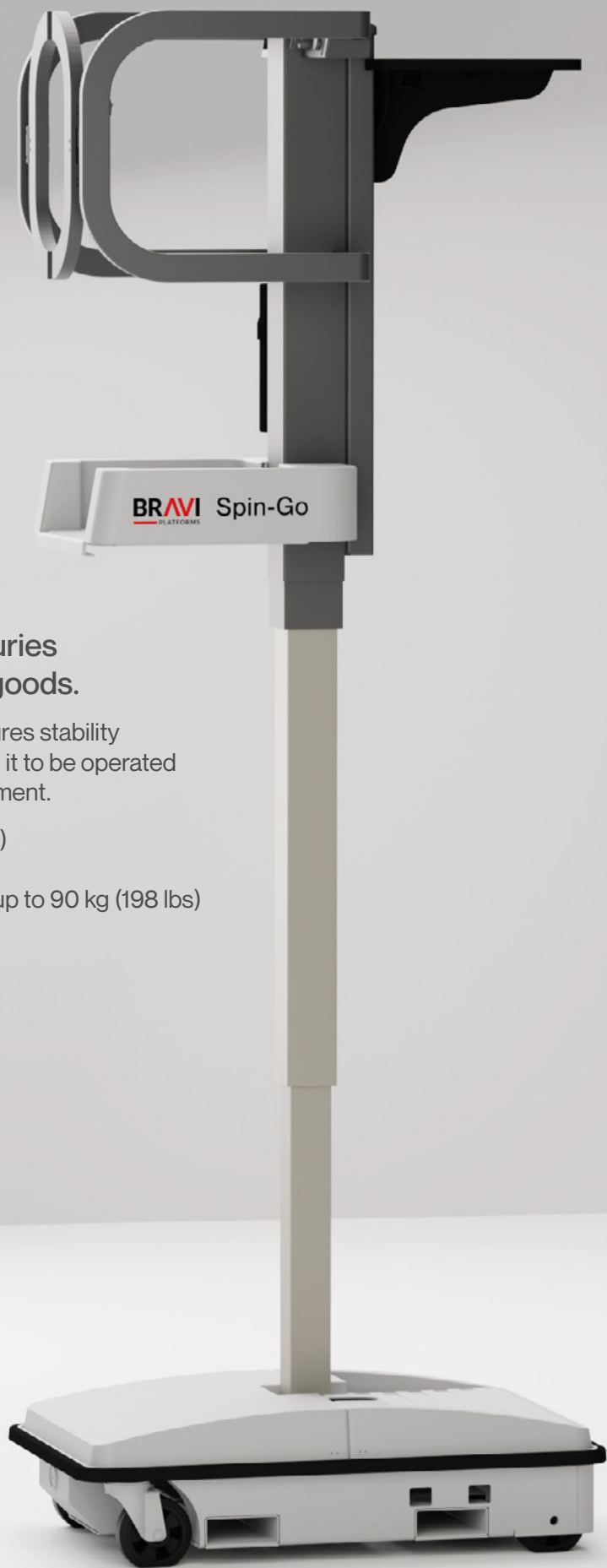
Perfect for supermarkets, DIY stores, drugstores and logistics centers, it offers a quick and safe solution for handling items at height.

The manual pushing system allows the platform to be quickly positioned at the desired location, while the adjustable tray optimizes the transport of equipment and goods, minimizing downtime.



# Spin-Go

Agility and safety on the go.

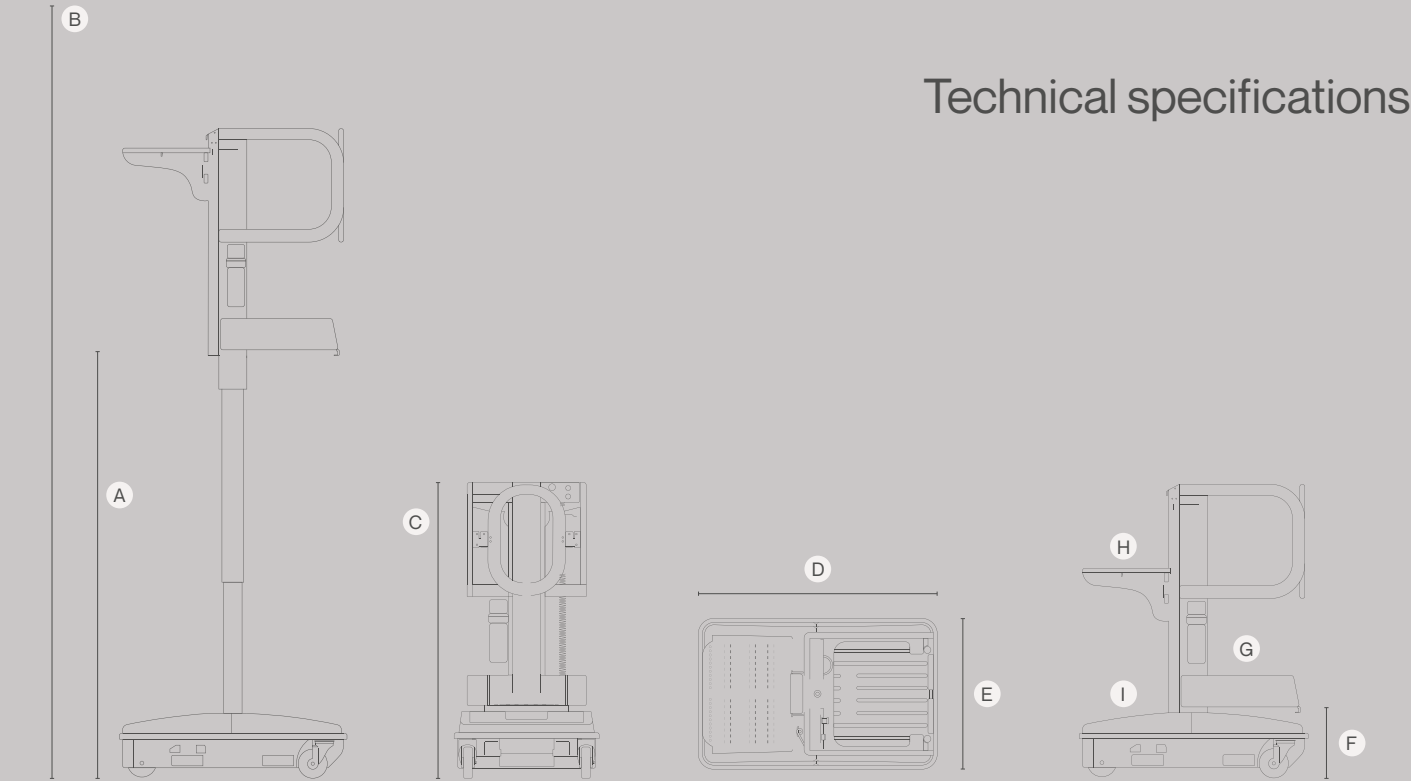


**Spin-Go eliminates the risks of injuries related to the manual handling of goods.**

The innovative motorized lifting system ensures stability and comfort, while its reduced weight allows it to be operated in environments inaccessible to other equipment.

- Operating height up to 4.17 mt (13 ft 67 in)
- Motorized lifting system
- Manually adjustable shelf with capacity up to 90 kg (198 lbs)
- Featherweight of only 280 kg (617 lbs)

## Technical specifications



	METRIC	US
A Platform Height	2168 mm	7 ft 11 in
B Working height	4168 mm	13 ft 67 in
C Height stowed	1480 mm	58 in
D Base Length	1163 mm	45 in
E Width	730 mm	28.7 in
F Entry step	367 mm	14.4 in
G Platform Capacity	130 Kg	286.6 lbs
H Capacity load tray	90 Kg	198.4 lbs
I Capacity load deck	90 Kg	198.4 lbs
Unit weight (CE)	280 Kg	617 lbs
Rated number of occupants	1	1
Raise/lower speed	18/15 sec	18/15 sec
Power source	110/220 V ca 24 Vcc	110/220 V ca 24 Vcc
Batteries	n°1 - 12V 85 Ah@20 h	n°1 - 12V 85 Ah@20 h

## Fast and intuitive handling

Thanks to its light weight, it can be manually pushed with ease in any work area and on any floor, including mezzanines. With only 8 kg (17 lbs) of force required, Spin-Go can be maneuvered with very little effort.

## Safe and efficient lifting

The motorized system reduces physical effort and increases operator's safety. The ability to position both feet on a flat surface greatly enhances stability in carrying out all daily activities out of natural reach.

## Maximum compactness and convenience

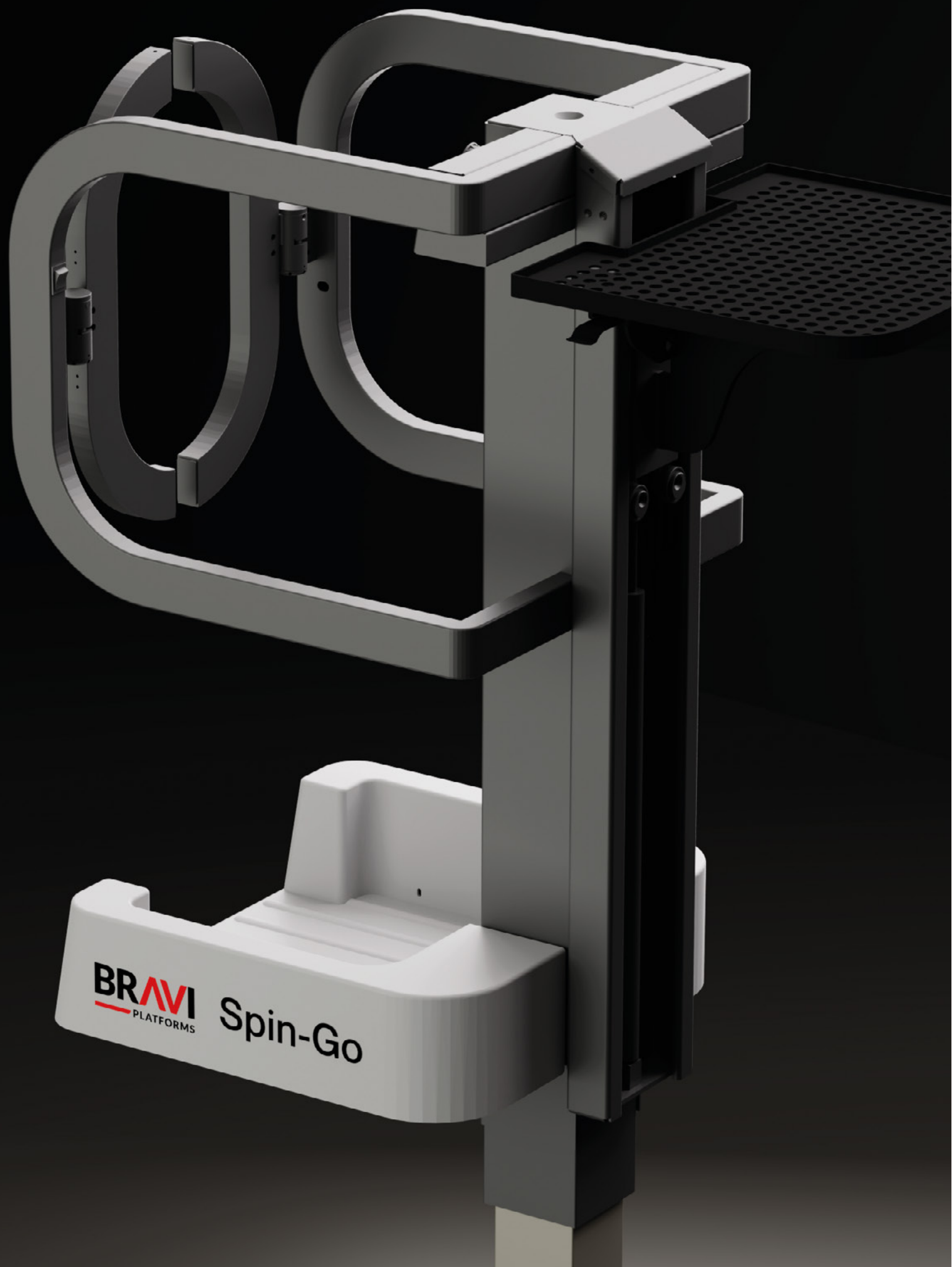
With a small footprint, Spin-Go is ideal for operating in tight spaces and in situations where no other equipment can do the job. Additional materials can also be stored on the bottom load deck up to a maximum of 90 kg (198 lbs), greatly reducing downtime.

## Minimal maintenance

With an innovative lifting mast system and AGM batteries, Spin-Go is free from any type of ordinary maintenance.







## Customize Spin-Go with accessories designed to enhance safety and functionality.

### MECHANICAL GATE INTERLOCK

Mechanical lock consisting of two caps activating when the platform lifts and placed inside two slots at the base of each door.

### MAGNETIC STORAGE BIN

Practical and sturdy box with a magnetic attachment, suitable for all Bravi models.

### GATE ALARM

Audible alarm that is activated every time the gate opens at height.



# Our services:

## Comprehensive support for every need

Bravi Platforms not only provides innovative platforms, but it guarantees a comprehensive 360° service to support customers at every stage: from product selection to maintenance and training. Every solution is designed to reduce downtime and maximize the value of the investment.

## Rapid and specialized technical assistance

A premium after-sales service, with qualified technicians and immediate support. Bravi units require very little maintenance, but in case of need we guarantee prompt interventions and quick solutions to minimize downtime.

## Original spare parts available in 48/72 hours

Through the Bravi Parts website, customers can order original spare parts independently, with guaranteed delivery within 48/72 hours. An efficient and intuitive system to always keep fleets running, with the certified quality of Bravi Parts.

## Technical and sales trainings

Bravi offers technical training programs for the proper use and maintenance of the platforms, other than sales trainings to support partners with the sales and rental of the units. Training courses are available both in-person and online, ensuring effective and personalized learning.

## Contact us for more information

To find out more about our services and find the right solution for your needs, visit our website or contact us directly.	BRAVIISOL D.M. SRL S.S. Adriatica 16 Km 314.600 60022 Castelfidardo (AN) - IT	bravi-platforms.com
Our team is ready to provide you with customized support and advice.	info@bravi-platforms.com	
	+39 071 781 9090 US Toll Free: 855-704-7342	

BRAVIISOL D.M. SRL  
S.S. Adriatica 16 Km 314.600  
60022 Castelfidardo (AN) - Italy

[info@bravi-platforms.com](mailto:info@bravi-platforms.com)

+39 071 781 9090  
US Toll Free: 855-704-7342

