

# Sherman Plaza

Convenient Uptown Location

1888 Sherman Street  
Denver, CO 80203



# Sherman Plaza

1888 Sherman Street | Denver, CO 80203



## Building Highlights



63,927 SF  
Building Size



9,144 SF  
Floorplate



1982/2016  
Year Built/Renovated



1.3/1,000 SF  
Parking Ratio



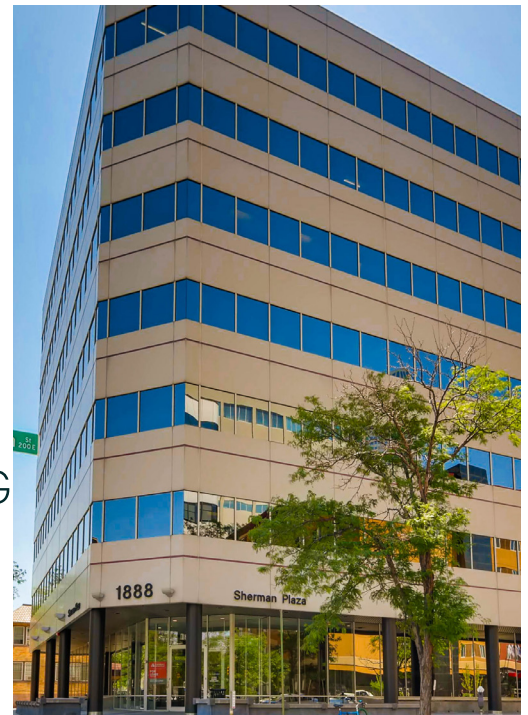
7  
Floors



\$23-\$25.00 FSG  
Asking Rate



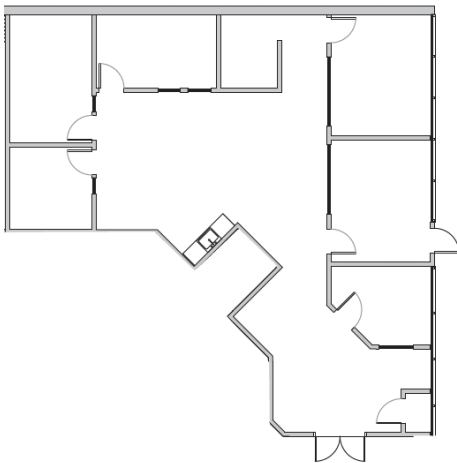
On-site  
Ownership & Management



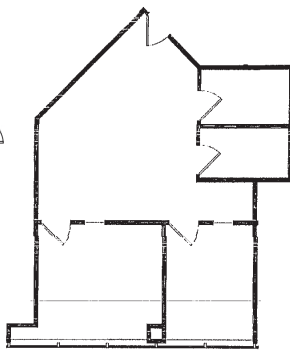
# Availabilities

Suite 100	2,165 SF	Lobby ID. Six offices, kitchen, and open area.
Suite 220	828 SF	Three offices, conference room, and open area.
Suite 330	1,999 SF	Three offices, kitchen, open area, and reception
Suite 370	2,747 SF	Three offices, conference room, kitchen, open area, and reception.
Suite 400	3,474SF	Four offices, conference room, kitchen, and reception.
Suite 415	2,303 SF	Four offices, conference room, and reception.
Suite 500	4,040 SF	Ten offices, work room, kitchen, and open area.
Suite 760	1,540 SF	Five offices, kitchen, open area, and reception

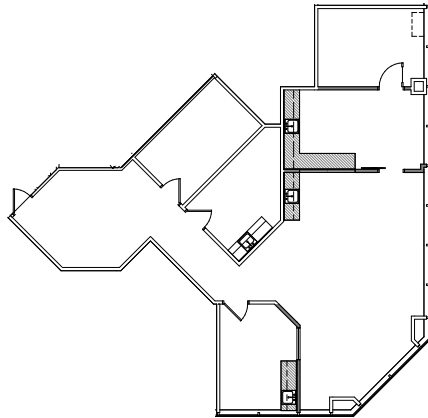
Suite 100: 2,165 SF



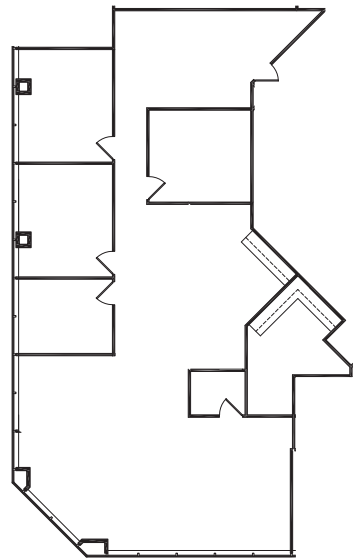
Suite 220: 828 SF



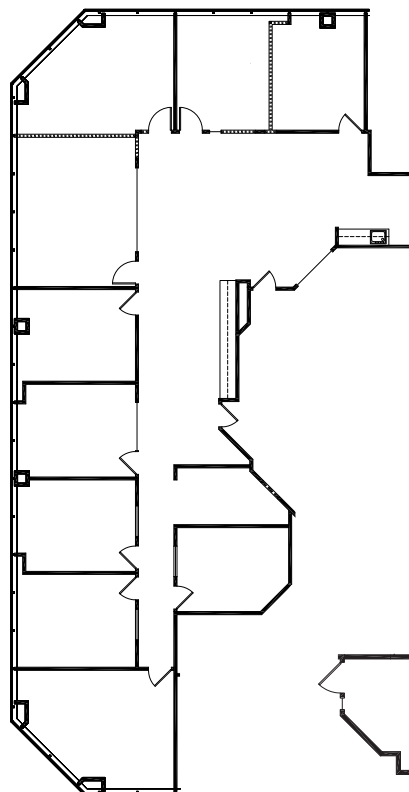
Suite 330: 1,999 SF



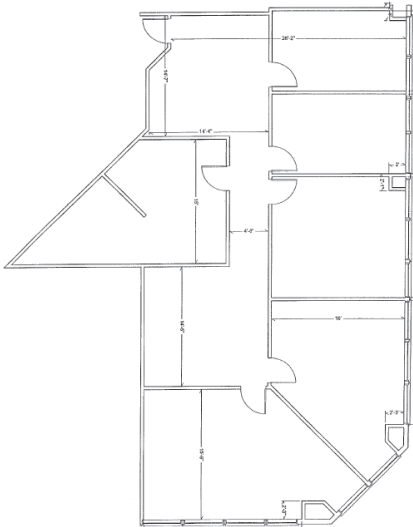
Suite 370: 2,747 SF



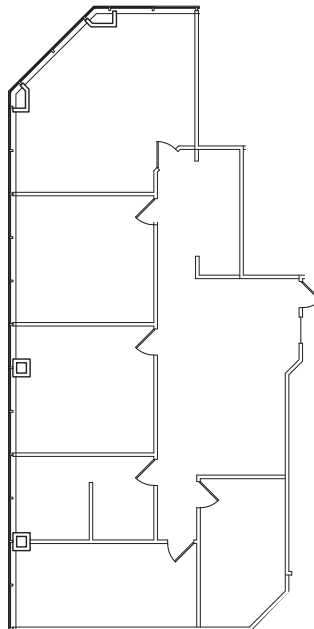
Suite 500: 4,040 SF



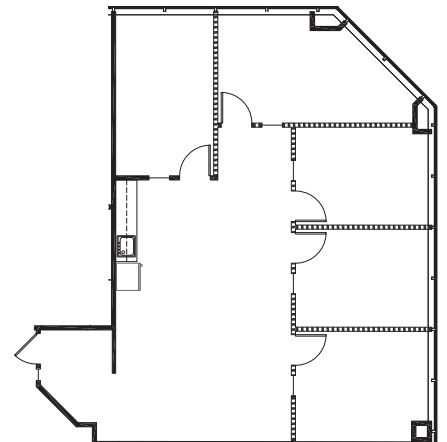
Suite 415: 2,303 SF



Suite 400: 2,161 SF



Suite 760: 1,540 SF



# Sherman Plaza

1888 Sherman Street | Denver, CO 80203

# For Lease



## Contact Us

### Blake Holcomb

First Vice President  
+1 303 583 2022  
blake.holcomb@cbre.com

### Brian Hutt

First Vice President  
+1 303 583 2041  
brian.hutt@cbre.com

© 2026 CBRE, Inc. All rights reserved. This information has been obtained from sources believed reliable, but has not been verified for accuracy or completeness. You should conduct a careful, independent investigation of the property and verify all information. Any reliance on this information is solely at your own risk. CBRE and the CBRE logo are service marks of CBRE, Inc. All other marks displayed on this document are the property of their respective owners, and the use of such logos does not imply any affiliation with or endorsement of CBRE. Photos herein are the property of their respective owners. Use of these images without the express written consent of the owner is prohibited.

