

Sherman Plaza

Convenient Uptown Location

1888 Sherman Street
Denver, CO 80203



Sherman Plaza

1888 Sherman Street | Denver, CO 80203



Building Highlights



63,927 SF
Building Size



9,144 SF
Floorplate



1982/2016
Year Built/Renovated



1.3/1,000 SF
Parking Ratio



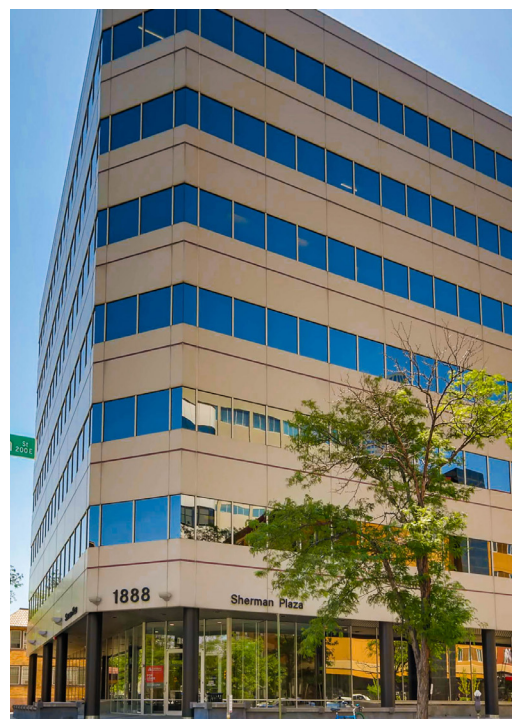
7
Floors



\$23.00 FSG
Asking Rate



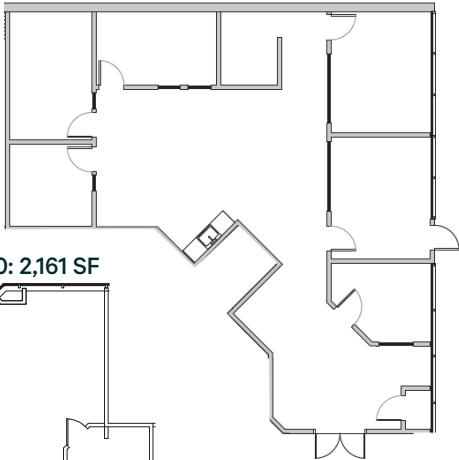
On-site
Ownership & Management



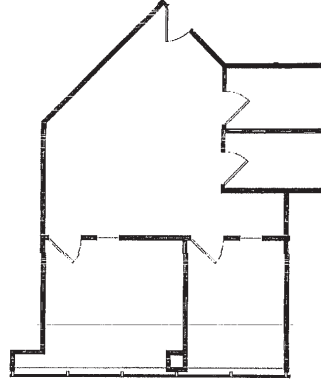
Availabilities

Suite 100	2,165 SF	Lobby ID. Six offices, kitchen, and open area.
Suite 220	828 SF	Three offices, conference room, and open area.
Suite 400	3,474 SF	Four offices, conference room, kitchen, and reception. Contiguous with Suite 425 for a total of 3,474 SF.
Suite 415	2,303 SF	Four offices, conference room, and reception.
Suite 425	1,313 SF	Kitchen/break room and open area. Contiguous with Suite 400 for a total of 3,474 SF.
Suite 500	4,040 SF	Ten offices, work room, kitchen, and open area.
Suite 605	967 SF	Two offices and open area.
Suite 770	2,594 SF	Six offices, conference room, break room, and work room.

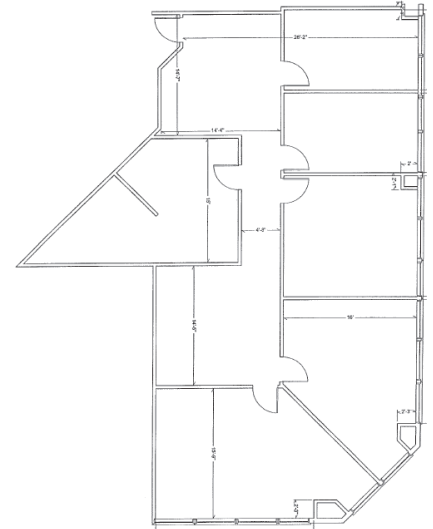
Suite 100: 2,165 SF



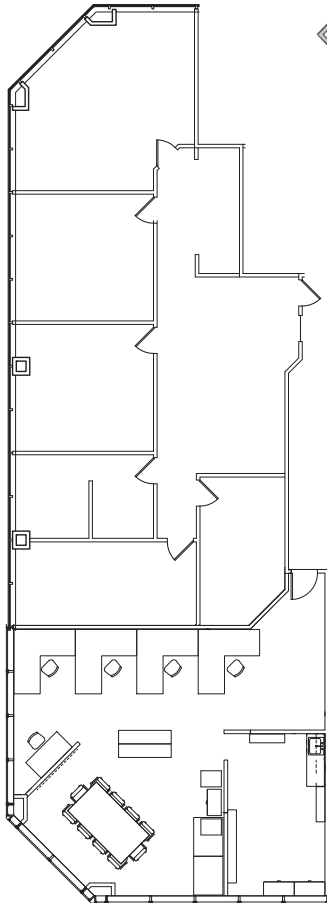
Suite 220: 828 SF



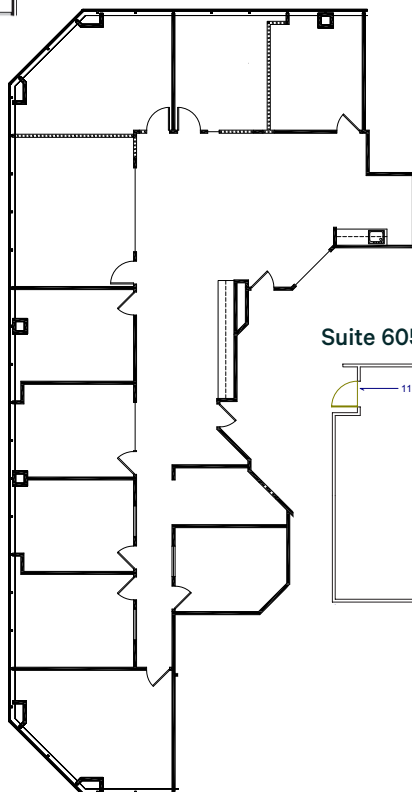
Suite 415: 2,303 SF



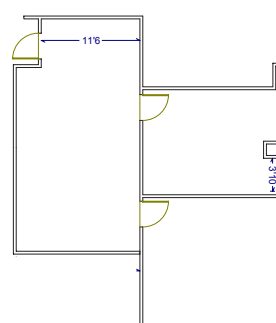
Suite 400: 2,161 SF



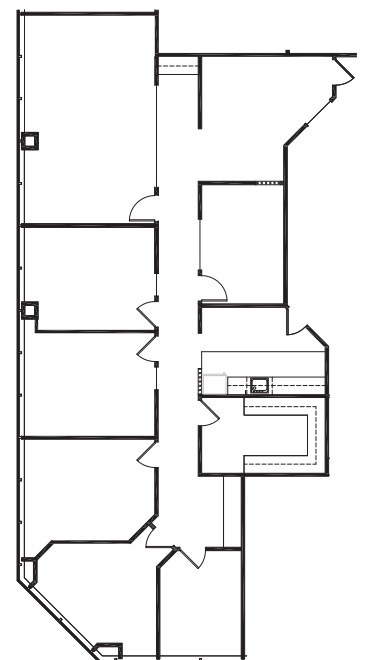
Suite 500: 4,040 SF



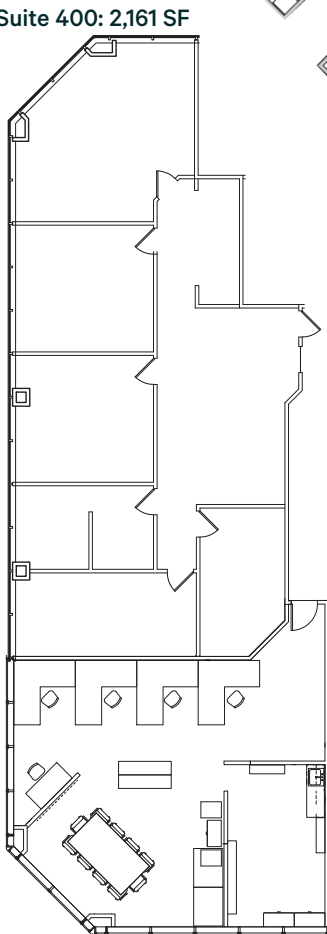
Suite 605: 967 SF



Suite 770: 2,594 SF



Suite 425: 1,313 SF



Sherman Plaza

1888 Sherman Street | Denver, CO 80203

For Lease



Contact Us

Blake Holcomb

First Vice President

+1 303 583 2022

blake.holcomb@cbre.com

Brian Hutt

First Vice President

+1 303 583 2041

brian.hutt@cbre.com

© 2025 CBRE, Inc. All rights reserved. This information has been obtained from sources believed reliable, but has not been verified for accuracy or completeness. You should conduct a careful, independent investigation of the property and verify all information. Any reliance on this information is solely at your own risk. CBRE and the CBRE logo are service marks of CBRE, Inc. All other marks displayed on this document are the property of their respective owners, and the use of such logos does not imply any affiliation with or endorsement of CBRE. Photos herein are the property of their respective owners. Use of these images without the express written consent of the owner is prohibited.

CBRE