



FOR LEASE
1878 S. Wadsworth Blvd
Lakewood, Colorado 80232



Retail Space For Lease

10,581 SF Available

Lease Rate: \$12.00 SF NNN

Estimated NNN: \$6.00/SF

Landlord Capital Improvements Coming Soon!

Building Area: 50,730 SF

Lot Area: 5.04 Acres

Parking Spaces: 197

Parking Ratio: 3.87/1,000SF

Blake Kahlich

M: 303 319 9079

blake@primesqft.com

TK Hammond

M: 303 763 0551

tk@primesqft.com



FOR LEASE

1878 S. Wadsworth Blvd

Lakewood, Colorado 80232

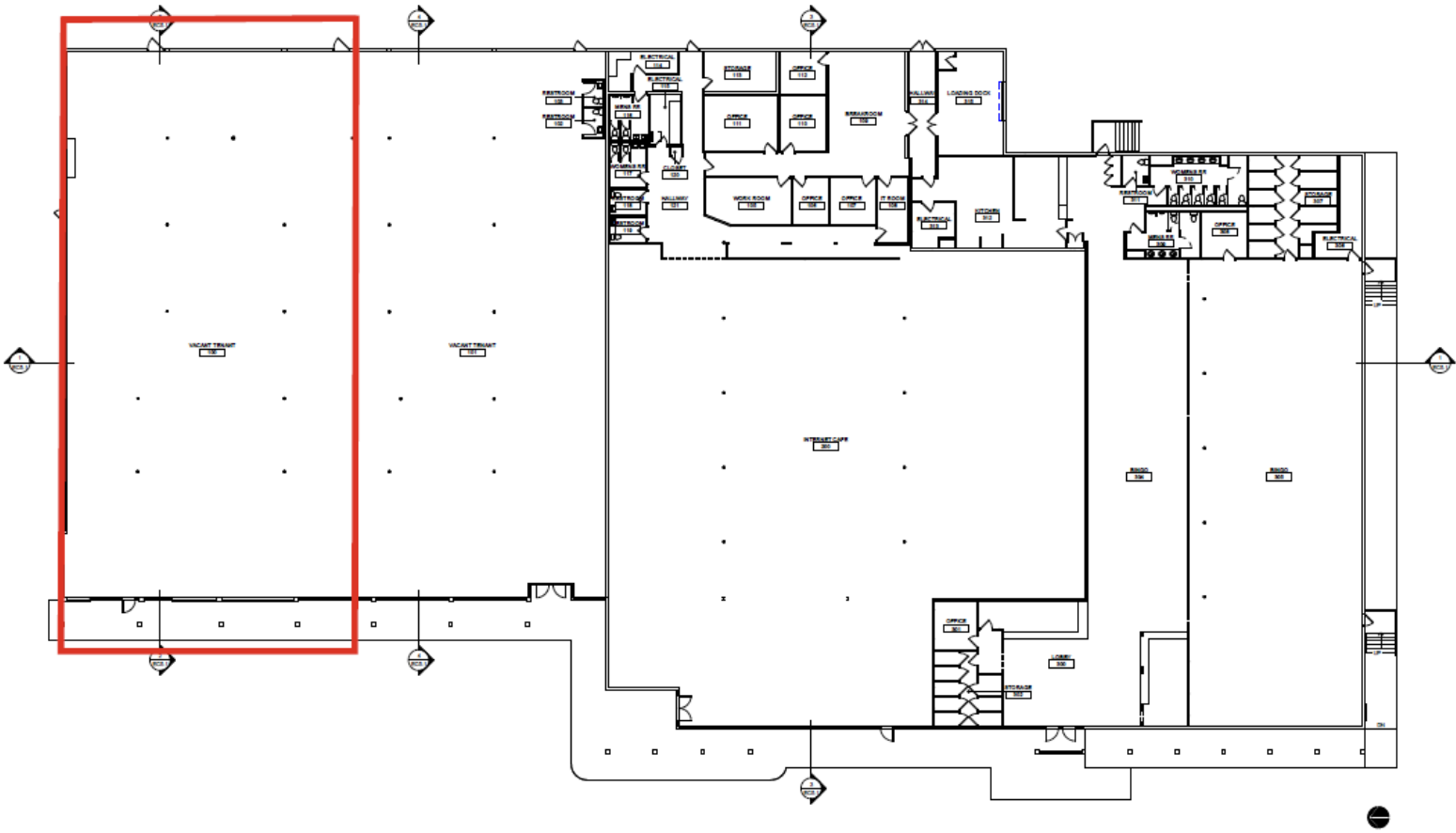
Demographics

	2 Mile	5 Miles	10 Miles
2024 Population	60,436	333,256	1,125,704

Traffic Counts

S Wadsworth Blvd / W Jewell Ave S 49,238 VPD

Floor Plan



Blake Kahlich
 M: 303 319 9079
 blake@primesqft.com

TK Hammond
 M: 303 763 0551
 tk@primesqft.com

PRIME MANAGEMENT LLC
 1888 Sherman Street, Suite 500
 Denver, Colorado 80203
 primesqft.com