

KPM-MARINE



**Predator Pump Range
2025-26**

Book
8



When reliability, speed and performance Are mission critical

KPM-MARINE



KPM predators in each water tight compartment (10 off) + KPM500⁺ keeping the vessel afloat in the English channel.

KPM never stops innovating and listening to customer's demanding applications, This has shaped our design ethos over 28 years.

KPM not only design for performance but also robust construction and the ability to repair in the field in the rare situation that the product fails. When we said to a customer "you can throw this off a mountain" we never thought that the customer would throw it off a mountain. The predator still worked and did not leak.

By listening to our customers we were asked to develop a light, high capacity pumping system run at 16 amps but deliver Maximum flow of 200l/min. The result was the Predator range which KPM then tested on our own race platform.

With over 6000 predator units in operation globally the recorded failure rate is an astonishing 0.03% over 10 years. These small number are normally repaired and sent back into operation within a few days.

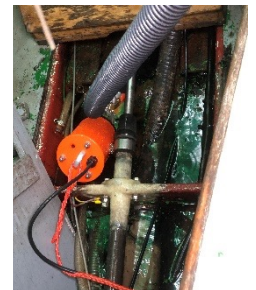
KPM do not compromise on materials and quality since we know that people depend on our products to work first time every time. It's a matter of Pride.



KPM founder Jules Morgan testing



Photo courtesy DARPA



28 years of global excellence

In aggressive environments & demanding users

KPM-MARINE



KPM Marine, based in Birmingham UK, has specialized in the design and manufacture of safety critical products for the marine and automotive industries for over 28 years. The KPM range of products for the marine industry includes seating, modular vessel interiors, engine room air management systems, high performance bilge pumps and sea strainers.

KPM designs its products around extended life times with full reparability and the lowest possible failure. In addition we design around recyclability (95% by weight) and use no volatile organic chemicals to be kind to the environment.

KPM has become the choice of professionals where failure is not an option.

Certified and tested to extremes



KPM-MARINE

ISO 8849 SMALL CRAFT ELECTRICAL OPERATED PUMPS

ISO 8846 SMALL CRAFT ELECTRICAL DEVICES PROTECTION FROM FLAMMABLE GAS

HSC 2000 PART 4 SECTION 3 BILGE AND BALLAST SYSTEMS.

USCG PRG 46-CFR-182.520

UL1113 ELECTRICALLY OPERATED PUMPS FOR NON FLAMMABLE LIQUIDS , MARINE

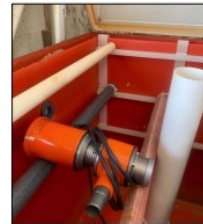
- Vibration tested for 12 hours at 10 hz
- shock testing at 10g 5000 times
- freeze test whilst operating at -30 deg C
- High temperature at 70 degC at 120% loading. Limit is 150 DegC KPM was 79.9 Deg C
- Stray leakage hit with 500v
- on off cycle 5000 times
- Abnormal continuous running in 18l sea water ,3.8l crank case oil 1.9l petrol
- run dry at full load 7 hours
- salt spray 192 hours
- Explosion test 50 off gas ignitions
- Locked rotor test
- Accelerated aging and strain tests



Pump Installed in Cold Chamber and Wire Testing



Strain Relief Testing Photos



Pump Before and After Salt Fog Testing



Vibration and Shock Test Setup



Pump During Ignition Protection Testing and Explosive Mixture Verification



Pump During Abnormal Condition Testing

Predator 150 S 24 volt 175 l/min

Small but powerful

ISO 8849 SMALL CRAFT ELECTRICAL OPERATED PUMPS

ISO 8846 SMALL CRAFT ELECTRICAL DEVICES PROTECTION FROM FLAMMABLE GAS




HSC 2000 PART 4 SECTION 3 BILGE AND BALLAST SYSTEMS.

USCG PRG 46-CFR-182.520

UL1113 ELECTRICALLY OPERATED PUMPS FOR NON FLAMMABLE LIQUIDS , MARINE



Stop press
Live well and macerator version
coming November 2023

-  Mil Spec seafoam green
-  Super yacht Arctic white
-  Emergency signal orange

- ☐ KPM150S – Predator Bilge Pump with Scavenger
- ☐ KPM150SF - Predator Bilge Pump with Scavenger and Float Switch

KPM-MARINE

The Predator 150 was born by market demand and customers wanting the same Predator reliability and performance but smaller. The result was the Predator 150 with an incredible water flow per watt of 0.83 litres per watt per min. .

But KPM went one stage further and designed the pump so that the motor can be replaced “cartridge style” in the unlikely event that the motor wears out it can be replaced at low cost giving extended life.

The KPM engineers are always receiving customers stories where the pump saved the vessel . One customer continued a 2-week voyage when they sprung a leak rather than putting into port because they had total trust.

Features include:

- ☐ 175 liters per min @3m head 10m hose (see our fitting guide)
- ☐ 24 volt running at 7.6 amps full pump load
- ☐ 2 meters of marine grade cable(Longer as option)
- ☐ Run dry capability - 2 weeks (turned off test)
- ☐ IP68 and fully waterproof to 15m depth
- ☐ Robust anti corrosion hard anodised aluminium construction
- ☐ Stainless impeller system
- ☐ Fully repairable
- ☐ 1 year warranty
- ☐ 12g impact tested
- ☐ Warranty return rate 0.03% over 4000 units over 10 years
- ☐ Weight 3.5 kg including bracket
- ☐ Compact Diameter 90mm/3.6" x 260mm/10.4 " long
- ☐ Spark resistant material and hermetically sealed
- ☐ 95% recyclable with no VOC's
- ☐ Quick glance red Indicator light to show running
- ☐ Wide range of approvals
- ☐ 1 inch/25mm mm id pipe fitting
- ☐ 12 to 24 Volt step up unit available for 12 volt systems



Predator 150 S 12 volt 125 l/min

Small but powerful

ISO 8849 SMALL CRAFT ELECTRICAL OPERATED PUMPS

ISO 8846 SMALL CRAFT ELECTRICAL DEVICES PROTECTION FROM FLAMMABLE GAS

HSC 2000 PART 4 SECTION 3 BILGE AND BALLAST SYSTEMS.

USCG PRG 46-CFR-182.520

UL1113 ELECTRICALLY OPERATED PUMPS FOR NON FLAMMABLE LIQUIDS , MARINE

KPM-MARINE



Stop press
Live well and macerator version
coming November 2023



Mil Spec seafoam green



Super yacht Arctic white



Emergency signal orange

- ☐ KPM150S – Predator Bilge Pump with Scavenger
- ☐ KPM150SF – Predator Bilge Pump with Scavenger and Float Switch

The Predator 150 was born by market demand and customers wanting the same Predator reliability and performance but smaller. The result was the Predator 150 with an incredible water flow per watt of 0.83 litres per watt per min. .

But KPM went one stage further and designed the pump so that the motor can be replaced “cartridge style” in the unlikely event that the motor wears out it can be replaced at low cost giving extended life.

The KPM engineers are always receiving customers stories where the pump saved the vessel . One customer continued a 2-week voyage when they sprung a leak rather than putting into port because they had total trust.

Features include:

- ☐ 125 liters per min @3m head 10m hose (see our fitting guide)
- ☐ 12 volt running at 7.6 amps full pump load
- ☐ 2 meters of marine grade cable(Longer as option)
- ☐ Run dry capability - 2 weeks (turned off test)
- ☐ IP68 and fully waterproof to 15m depth
- ☐ Robust anti corrosion hard anodised aluminium construction
- ☐ Stainless impeller system
- ☐ Fully repairable
- ☐ 1 year warranty
- ☐ 12g impact tested
- ☐ Warranty return rate 0.03% over 4000 units over 10 years
- ☐ Weight 3.5 kg including bracket
- ☐ Compact Diameter 90mm/3.6” x 260mm/10.4 “ long
- ☐ Spark resistant material and hermetically sealed
- ☐ 95% recyclable with no VOC's
- ☐ Quick glance red Indicator light to show running
- ☐ Wide range of approvals
- ☐ 1 inch/25mm mm id pipe fitting
- ☐ 12 to 24 Volt step up unit available for 12 volt systems



Predator 350 S

230 l/min

KPM-MARINE

A mythical reputation and choice of Professionals

ISO 8849 SMALL CRAFT ELECTRICAL OPERATED PUMPS

ISO 8846 SMALL CRAFT ELECTRICAL DEVICES PROTECTION FROM FLAMMABLE GAS

HSC 2000 PART 4 SECTION 3 BILGE AND BALLAST SYSTEMS.

USCG PRG 46-CFR-182.520




UL1113 ELECTRICALLY OPERATED PUMPS FOR NON FLAMMABLE LIQUIDS , MARINE

The Predator 350 is the choice of professionals from work boat operators to Yachtsmen . The KPM engineers are always receiving customers stories where the pump saved the vessel . One customer continued on a 2 week voyage when they sprung a leak rather than putting into port because they had total trust in the predator, which run for the whole voyage without any issues. I hasten to add that the yacht builder now fits Predator as standard like most work boat yards . Praise indeed.

Features include:

- 200-250 liters per min @3m head (see our fitting guide)
 - 24 volt running at 1.6 amps full pump load
 - 3 meters of marine grade cable(Longer as option)
 - Run dry capability - 2 weeks (turned off test)
 - IP68 and fully water proof to 15m depth
 - Robust anti corrosion hard anodised aluminium construction
 - Stainless impeller system
 - Fully repairable
 - 1 year warranty
 - 12g impact tested
 - Warranty return rate 0.03% over 4000 units over 10 years
 - Weight 7.5 kg including bracket
 - Compact Diameter 114mm x 350mm long
 - Spark resistant material and hermetically sealed
 - 95% recyclable with no VOC's
 - Quick glance red Indicator light to show running
 - Wide range of approvals
 - 38mm id pipe fitting
 - 12 to 24 Volt step up unit available for 12 volt systems
-
- KPM350S – Predator Bilge Pump with Scavenger
 - KPM350SF - Predator Bilge Pump with Scavenger and Float Switch



-  Mil Spec seafoam green
-  Super yacht Arctic white
-  Emergency signal orange



Predator 350-8 S

435 l/min

KPM-MARINE

A mythical reputation and choice of Professionals

ISO 8849 SMALL CRAFT ELECTRICALLY OPERATED PUMPS

ISO 8846 SMALL CRAFT ELECTRICAL DEVICES PROTECTION FROM FLAMMABLE GAS

HSC 2000 PART 4 SECTION 3 BILGE AND BALLAST SYSTEMS.

USCG PRG 46-CFR-182.520

UL1113 ELECTRICALLY OPERATED PUMPS FOR NON FLAMMABLE LIQUIDS , MARINE




The Predator 350-8 is the choice of professionals from work boat operators to Yachtsmen . With a specially designed 800w motor running at 29 amps full load , this pump is ideal where maximum pumping is required in a limited space at high head heights.

Features include:

- ❑ 435 liters per min @3m head (see our fitting guide)
- ❑ 24 volt running at 29 amps full pump load
- ❑ 3 meters of marine grade cable(Longer as option)
- ❑ Run dry capability - 2 weeks (turned off test)
- ❑ IP68 and fully water proof to 15m depth
- ❑ Robust anti corrosion hard anodised aluminium construction
- ❑ Stainless impeller system
- ❑ Fully repairable
- ❑ 1 year warranty
- ❑ 12g impact tested
- ❑ Warranty return rate 0.03% over 4000 units over 10 years
- ❑ Weight 7.5 kg including bracket
- ❑ Compact Diameter 114mm x 350mm long
- ❑ Spark resistant material and hermetically sealed
- ❑ 95% recyclable with no VOC's
- ❑ Quick glance red Indicator light to show running
- ❑ Wide range of approvals
- ❑ 38mm id pipe fitting
- ❑ 12 to 24 Volt step up unit available for 12 volt systems

- ❑ KPM350S - Predator Bilge Pump with Scavenger
- ❑ KPM350SF - Predator Bilge Pump with Scavenger and Float Switch



-  Mil Spec seafoam green
-  Super yacht Arctic white
-  Emergency signal orange



Predator 700 S

350 l/min

KPM-MARINE

High flow - low power

ISO 8849 SMALL CRAFT ELECTRICAL OPERATED PUMPS




ISO 8846 SMALL CRAFT ELECTRICAL DEVICES PROTECTION FROM FLAMMABLE GAS

HSC 2000 PART 4 SECTION 3 BILGE AND BALLAST SYSTEMS.

USCG PRG 46-CFR-182.520

UL1113 ELECTRICALLY OPERATED PUMPS FOR NON FLAMMABLE LIQUIDS , MARINE



-  Mil Spec seafoam green
-  Super yacht Arctic white
-  Emergency signal orange

The Predator 700 is the choice of professionals from work boat operators to Yachtsmen . The dual pump configuration not only allows high water flow , but the option of using single pumps or both to conserve power . The 700s also allows redundancy where mission critical ops need to be considered.

Features include:

- ❑ 350 liters per min @3m head 10 m hose 2 inch(see our fitting guide)
- ❑ 24 volt running at 29 amps full pump load
- ❑ 3 meters of marine grade cable(Longer as option)
- ❑ Run dry capability - 2 weeks (turned off test)
- ❑ IP68 and fully water proof to 15m depth
- ❑ Robust anti corrosion hard anodised aluminium construction
- ❑ Stainless impeller system
- ❑ Fully repairable
- ❑ 1 year warranty
- ❑ 12g impact tested
- ❑ Warranty return rate 0.03% over 4000 units over 10 years
- ❑ Weight 16 kg including bracket
- ❑ Compact Diameter 114mm x 350mm long
- ❑ Spark resistant material and hermetically sealed
- ❑ 95% recyclable with no VOC's
- ❑ Quick glance red Indicator light to show running
- ❑ Wide range of approvals
- ❑ 50mm / 2 inch id pipe fitting
- ❑ 12 to 24 Volt step up unit available for 12 volt systems



Predator 700-8 S

720 l/min

KPM-MARINE

High flow - low power

ISO 8849 SMALL CRAFT ELECTRICAL OPERATED PUMPS




ISO 8846 SMALL CRAFT ELECTRICAL DEVICES PROTECTION FROM FLAMMABLE GAS

HSC 2000 PART 4 SECTION 3 BILGE AND BALLAST SYSTEMS.

USCG PRG 46-CFR-182.520

UL1113 ELECTRICALLY OPERATED PUMPS FOR NON FLAMMABLE LIQUIDS , MARINE



-  Mil Spec seafoam green
-  Super yacht Arctic white
-  Emergency signal orange

The Predator 700 is the choice of professionals from work boat operators to Yachtsmen . The dual pump configuration not only allows high water flow , but the option of using single pumps or both to conserve power . The 700s also allows redundancy where mission critical ops need to be considered.

Features include:

- ❑ 720 liters per min @3m head 10 m hose 2 inch(see our fitting guide)
- ❑ 24 volt running at 60 amps full pump load
- ❑ 3 meters of marine grade cable(Longer as option)
- ❑ Run dry capability - 2 weeks (turned off test)
- ❑ IP68 and fully water proof to 15m depth
- ❑ Robust anti corrosion hard anodised aluminium construction
- ❑ Stainless impeller system
- ❑ Fully repairable
- ❑ 1 year warranty
- ❑ 12g impact tested
- ❑ Warranty return rate 0.03% over 4000 units over 10 years
- ❑ Weight 16 kg including bracket
- ❑ Compact Diameter 114mm x 350mm long
- ❑ Spark resistant material and hermetically sealed
- ❑ 95% recyclable with no VOC's
- ❑ Quick glance red Indicator light to show running
- ❑ Wide range of approvals
- ❑ 50mm / 2 inch id pipe fitting
- ❑ 12 to 24 Volt step up unit available for 12 volt systems



Predator 350 S deep reach

A mythical reputation and choice of Professionals

ISO 8849 SMALL CRAFT ELECTRICAL OPERATED PUMPS

ISO 8846 SMALL CRAFT ELECTRICAL DEVICES PROTECTION FROM FLAMMABLE GAS

HSC 2000 PART 4 SECTION 3 BILGE AND BALLAST SYSTEMS.

USCG PRG 46-CFR-182.520

UL1113 ELECTRICALLY OPERATED PUMPS FOR NON FLAMMABLE LIQUIDS , MARINE

The KPM-Marine Predator deep reach 350 has been developed for residual and mass removal of bilge water where access to the bilges is limited or tight. This pump can be mounted above the floor with access cut for the main pipe. This pump can be supplied in any length between 1000mm and 100mm to customer specifications.

Features include:

- ☐ 200-250 liters per min @3m head (see our fitting guide)
- ☐ 24 volt running at 16 amps full pump load
- ☐ 3 meters of marine grade cable(Longer as option)
- ☐ Run dry capability - 2 weeks (turned off test)
- ☐ IP68 and fully water proof to 15m depth
- ☐ Robust anti corrosion hard anodised aluminium construction
- ☐ Stainless impeller system
- ☐ Fully repairable
- ☐ 1 year warranty
- ☐ 12g impact tested
- ☐ Warranty return rate 0.03% over 4000 units over 10 years
- ☐ Weight 7.5 kg including bracket
- ☐ Compact Diameter 114mm x 350mm long
- ☐ Spark resistant material and hermetically sealed
- ☐ 95% recyclable with no VOC's
- ☐ Quick glance red Indicator light to show running
- ☐ Wide range of approvals
- ☐ 38mm id pipe fitting
- ☐ 12 to 24 Volt step up unit available for 12 volt systems

- ☐ KPM350LR20 – Long Reach with 200mm extension
- ☐ KPM350LR40 – Long Reach with 400mm extension
- ☐ KPM350LR10 – Long Reach with 1000mm extension



- ☐ Mil Spec seafoam green
- ☐ Super yacht Arctic white
- ☐ Emergency signal orange



KPM Predator 350 LM

Black tank Macerator and Live-well circulator

KPM-MARINE

ISO 8849 SMALL CRAFT ELECTRICAL OPERATED PUMPS

ISO 8846 SMALL CRAFT ELECTRICAL DEVICES PROTECTION FROM FLAMMABLE GAS

HSC 2000 PART 4 SECTION 3 BILGE AND BALLAST SYSTEMS.

USCG PRG 46-CFR-182.520

UL1113 ELECTRICALLY OPERATED PUMPS FOR NON FLAMMABLE LIQUIDS , MARINE

The Predator 350LM was developed for a fleet operator who was tired of the cost and the unpleasant task of replacing macerators of a different make that were failing every 6 months and the cost in down time . Four years later the fleet of Predator 350 LM's has not missed a beat. Another example was when an Irish commercial fisherman contacted KPM for a replacement and after checking the serial number KPM were surprised that the pump had stopped. The customer informed KPM that the pump had run for four years in a live well and he was delighted and wanted to buy a new one. After decontaminating the returned pump KPM fully repaired the unit and sent it back as a spare.

Features include:

- ❑ 200-250 liters per min @3m head (see our fitting guide)
- ❑ 24 volt running at 16 amps full pump load
- ❑ 3 meters of marine grade cable(Longer as option)
- ❑ Run dry capability - 2 weeks (turned off test)
- ❑ IP68 and fully water proof to 15m depth
- ❑ Robust anti corrosion hard anodised aluminium construction
- ❑ Stainless impeller system and macerator blade.
- ❑ Fully repairable
- ❑ 1 year warranty
- ❑ 12g impact tested
- ❑ Warranty return rate 0.03% over 4000 units over 10 years
- ❑ Weight 7.5 kg including bracket
- ❑ Compact Diameter 114mm x 350mm long
- ❑ Spark resistant material and hermetically sealed
- ❑ 95% recyclable with no VOC's
- ❑ Quick glance red Indicator light to show running
- ❑ Wide range of approvals
- ❑ 38mm input and output fittings



Filter sock KPM 350 FS

Protecting the pump



Sold in packs of 5

The KPM filter sock was developed for the USMC where the external water was used to cool the engines on the ATV's. KPM conducted months of trials with all the duty cycles that would be encountered.

After months of testing KPM developed the filter sock and whilst filtering the listed media, also maintained full flow. Even if used in the bilge KPM suggest the use of a sock where loose items would damage or block the pump.

Each Sock has a stainless spring that stops the sock collapsing so free flow is maintained. Socks can be washed and reused giving a long service life.

Filtering capability tested

- ☐ Red tide
- ☐ Sand, mud, slurry and gravel
- ☐ Duck weed
- ☐ Floating algae
- ☐ Man made waste paper and plastic
- ☐ Peat and moss bio matter
- ☐ Jelly fish
- ☐ Zoo plankton
- ☐ Leaf matter and mulch
- ☐ Paper
- ☐ Cable ties, nuts and bolts



Hi flow Non return valves

In aggressive environments & demanding users

KPM NRV 150 and 350

The KPM-Marine Non-Return Valve has been designed to ensure maximum flow from the Predator. CNC machined from aluminium. Hard anodised and powder coated the valve is the most robust on the market. The flapper valve is maintenance-free and made from water board approved EPDM for extra life. Sizes available: 1", 1.5" and 2" pipe inside diameters. The unit has a very low crack pressure and virtually zero effect on flow. The NRV is easily repairable by simply fitting a new gasket flapper. Like all KPM repairability engineering, the gasket can be turned over to reveal a new sealing surface. This NRV should last you a lifetime.



 **150**
350
Inter-changeable

KPM NRV-S

The KPM NRV is designed for use in the most demanding situation especially for engine rooms or where there may be a fire hazard. KPM in its research found that many customers that used bronze NRV's suffered with the flapper corroding and not being able to open. KPM developed a seal less NRV that relies on diamond turned surface to create a non rubber seal. All materials are made from SS316/CF8M stainless steel and are shot peened with 120 glass bead. The unit has a very low crack pressure and virtually zero effect on flow.



KPM SENSORS AND FLOAT SWITCHES

KPM-MARINE

For early warning

KPM DLS Dual level sensor

KPM Marine dual level sensors give a high and low reading that is commonly integrated into the ships control system. The sensor comes in two variations depending on the class of the vessel. Class vessels usually have normally on and non class normally off. The switch has a bracket that allows it to be bolted to the Predator pump in 3 positions.



24 vdc 1.5 amp 50 w Twin
float switch (To alarms only
Not to switch power to
pump)

KPM 25 AFS Amp Float switch

KPM Marine 24v 25 Amp is a robust bilge switch that allows the Predator to be run on manual or automatic mode using freely available bilge switch panels of your choice or a KPM bilge switch panel. Float switches tend to be a point of failure so this switch has been over engineered by KPM. The float switch comes complete with a filter guard for areas where there may be contamination.

Part No KPM 25FS



150
350
Inter-changeable

Part No KPM
25FS-F



12-24 volt driver pack

The KPM driver pack allows the user to connect the optimised 24 volt Predator pump unit to a 12volt system with a 93% efficiency whilst maintaining the performance of a 24 volt motor in the predator. An aluminium anodised housing to IP68 supplied with volt meter circuit breaker and plug connections.



Part No KPM 12DP



230V-24Vvolt driver pack



12-24 volt Bilge switch

The KPM Bilge switch when used with the KPM 25 amp float switch allows the Predator pump to be put in manual or automatic mode. This switch panel is industrial grade and mounted on a stainless 316/L engraved panel with fixing supplied. The volt meter allows the user to determine the flow of the pump.

Part No KPM BPS



Part No KPM 230V-24vDP

Predator Rescue Pump.

High volume compact size

FRP2

KPM-MARINE

The **FRP2** is used by all predator users as a back up pump to augment the fixed pump in water tight compartments , giving a combined flow of over 400 l per min. The compact unit can be set up and running in less than a minute where seconds can be the difference between safety or disaster.

The **FRP2** is also used by customers for Boundary cooling, light firefighting and was down . How you use this pump is down to your imagination. If you want the Ultimate portable pumping solution our **FRP5** package is the solution for you

Included in the kit

- ❑ KPM 500S pump
- ❑ Robust high quality pump bag with pockets
- ❑ 10m of marine grade cable
- ❑ 10M orange lanyard
- ❑ KPM water proof plug and socket
- ❑ 10 m off 40mm hose
- ❑ Robust high quality Hose carry bag
- ❑ KPM Filter sock 2 off
- ❑ KPM orange nylon cam couplings so two 10 m lengths can be joined.



FRP5

The **FRP5** is the ultimate portable rescue pumping solution. With our own developed LiPo4 battery technology the battery pack can Move 36,000 litres of water to a head height of 3m in 3 hours with out pump slow down . With a recharge time of three hours Please ask for our Separate Brochure on the **FRP5**

