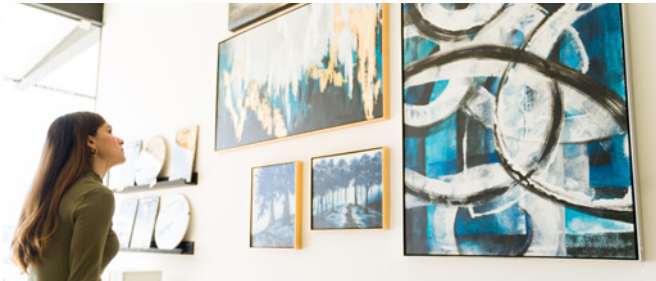


HD Apeiron/42

42×60×5.1"

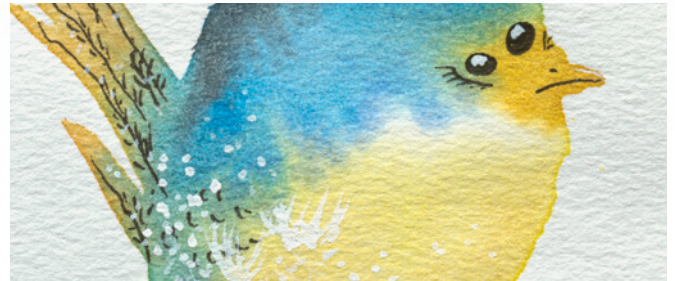


CONTACT-FREE LARGE FORMAT SCANNING WITH ACCURATE COLOR REPRODUCTION



FINE ART AND ARTWORK

Preserve art masterpieces using contact-free scanning with extremely accurate color matching.



REPROGRAPHICS

Reproduce the fine details of any type of original by scanning with an optical resolution of up to 1200 dpi.



PRINT INSPECTION

High-quality image input ensures that the critical first step in print inspection is flawless.



FABRICS AND APPAREL

Present color correct digital versions of both fabrics and finished apparel.

SEE MORE: context.com/hdapeiron

 **context**[®]
WHEN IMAGING MATTERS

HD Apeiron/42

	HD Apeiron/42		
Optimized for	Precision (frequent use)		
Suitable for (among many others)	Fine art, artwork, posters and prints, interior design materials, fabric and apparel, delicate documents		
Media loading	Contact-free face up scanning		
Scan size (W×L)	Maximum: 42×60 in (1067×1524 mm). Minimum: 1×1 in (24.5×24.5 mm).		
Media size (W×L)	Maximum: 43.8×64 in (1113×1625 mm). Minimum: Media smaller than the min. scan size can be cropped in the software.		
Maximum focus plane above table	5.1 in (130 mm). Maximum clearance height: 10 in (254 mm)		
Maximum focus depth	+/- 10 mm		
Maximum weight on scanner table	Up to 44 lbs (20 kg), evenly distributed		
Scanning speed (inches/second) ¹	300 dpi, 24-bit color	600 dpi, 24-bit color	1200 dpi, 24-bit color
Plane surface	6 ips	1.5 ips	0.12 ips
Uneven surface	5.5 ips	1.38 ips	0.28 ips
3D surface effect	2.75 ips	0.69 ips	0.11 ips
Specifications			
Optical resolution	1200 dpi (maximum 9600 dpi, interpolated)		
Total number of pixels	256,320 pixels		
Accuracy	0.1% +/- 1 pixel		
Data capture	48-bit color, 16-bit grayscale		
Data output	Optimize for quality: 48-bit color, 16-bit grayscale. Optimize for speed: 24-bit color, 8-bit grayscale.		
Color spaces	Adobe RGB, Device RGB, sRGB		
Color profile	ICC color management powered by X-Rite®		
Cameras	6 premium camera lenses and quad-linear Toshiba color CCDs (RGB and grey)		
Height adjustment and focus detection	Auto and manual focus adjustment by 5 lasers in the scan module (patent pending)		
Light sources	2 lamps with TRI-R™ LEDs with natural daylight spectrum (2700K, 5000K, 6500K), mounted in elliptical reflectors		
Light exposure	No unnecessary light exposure. Scanning light is narrowly projected to the scan line only.		
Lamp specifications	No UV/IR radiation. No warm up time. Lifetime = scanner lifetime.		
Lamp angles	Four options for different angles of lighting		
3D surface effect	Yes. Post-scanning option in the software to slide for desired 3D surface effect		
Table conveyance system	Precision timing belt transmission with triple-point direction control system		
Movement controls via software	Scan module: Up/down. Table: Forward/reverse. Default table position: Left/right		
Red emergency stop button	Yes		
PC, monitor and software			
Recommended PC requirements	2.4 GHz processor, 8 cores (16 logical processors) or better 64-bit processors, 32 GB RAM and SSD SATA drive (PC not included)		
Operating systems	Windows 11 64-bit, Windows 10 64-bit		
Connectivity	Min. USB 3.0 SuperSpeed or Gigabit Ethernet		
Included monitor	22" touchscreen (VESA mount 75×75 mm and 100×100 mm) with adjustable position for optimal ergonomics		
Included software	Nextimage Apeiron (English, German, French, Italian, Spanish, Portuguese, Polish, Russian, Korean, Chinese (simplified), Japanese)		
File formats	Big TIFF, TIF, JPG, PDF, PDF/A, DWF, BMP, JPEG2000 Extended(JPX), TIF-G3, TIF-G4, PNG		
Printer support	HP, Canon, Epson and Océ printers. See context.com/nextimage-supported-printers for full list		
Environment			
Temperature	Operating: 15 to 30°C (59 to 86°F). Storage: -20 to 55°C (-4 to 131°F)		
Relative humidity	35 to 60%, non-condensing		
Noise level	Ready (standby): 0 dBA. Sleep: 0 dBA. Scan: 44.8 dBA (min. table speed), 45.4 dBA (medium table speed), 47 dBA (max. table speed)		
Power			
Power consumption	Ready (standby): 36W. Sleep: 1.3W. Scan: 76W (Energy Star® 3.0 compliant)		
Power supply	100 V / 230 V / 240 V, 60/50 Hz		
Dimensions			
Scanner size (W×H×D) and weight	135.8×61.3×62 in (3450×1558×1575 mm) in highest position. Approx. 412 lbs (187 kg)		
Table and cabinet door sizes	Table height: 35.4 in (900 mm). Cabinet door opening (W×H) ² : 19×21.8 in (484×555 mm)		
Installation room	Firm, flat surface at least 1378×630 in (3500×1600 cm)		
Minimum entrance size	Minimum width: 32 in (81 cm), with the foam box removed. Minimum height: 57 in (145 cm), scan module set in the lowest position		
Shipping crate (W×H×D)	79×73×53 in (2010×1860×1350 mm). Weight 750 lbs. (340 kg)		
Unboxing and installation	Wheels on the scanner and an included ramp assists unboxing and installation		
Compliance			
FADGI	FADGI **** (4 stars is the best imaging practical today)		
ISO	ISO 19264-1:2021 compliant (Imaging quality of reflective originals)		
Certifications	UL/Cb, FCC, CCC (China), UKCA, CE, VCCI (Japan), Laser (FDA/IEC), RoHS, Energy Star 3.0		
Color rendering index (CRI)	CRI >98		
Country of origin	Designed and engineered in Denmark. Assembled in China.		

1. Speed tests performed using Nextimage Apeiron software, PC with Intel Core i7 4770K 3.5 GHz, 32 GB RAM, SSD – 1TB, USB 3.0 SuperSpeed and Win 64-bit.
2. Required PC (not part of product) is stored in cabinet.

All trademarks remain the property of their respective holders, and are used only to directly describe the product being provided. Their use does not indicate a relationship between Context and the trademark holders.



context.com/hdapeiron

Context HQ & EMEA
Global Scanning Denmark A/S
Copenhagen, Denmark
Phone: +45 4814 1122
info@context.com

Context Americas
Global Scanning Americas Inc.
Chantilly, VA. 20151, USA
Phone: +1 (877) 226 6839
salesamericas@context.com

Context Japan & Asia
Global Scanning Japan A/S
Yokohama, Japan
Phone: +81 45 548 8547
apac@context.com

 **context®**
WHEN IMAGING MATTERS