

# THE SCARBOROUGH 248

House & Land From \$1,094,500.00



JONES BUILDING GROUP



16.7M HOUSE WIDTH 17.8M HOUSE LENGTH

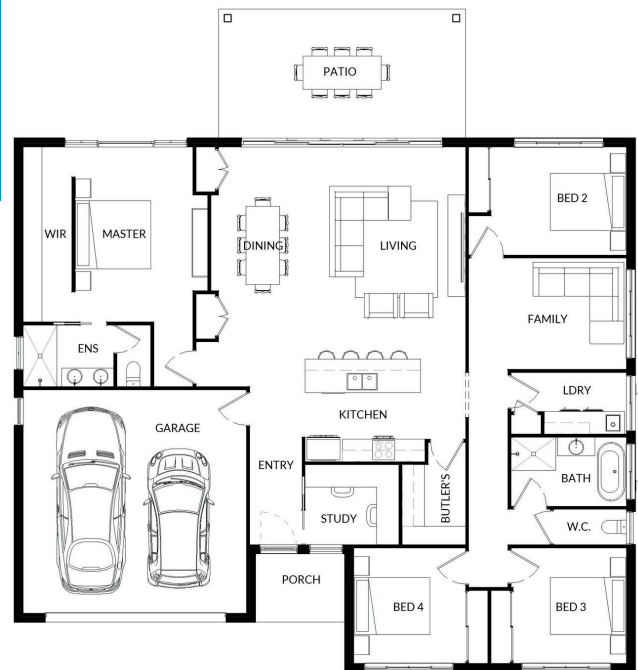
4 2 2 248 SQ. M.

The Scarborough 248 truly has it all. Designed for modern family living, this impressive home features a butler's pantry, dedicated study, expansive open-plan kitchen, dining and living zone, plus a separate media/family room for added flexibility. The designer master suite offers a private retreat, while extra-wide stacker doors flood the home with natural light and create seamless indoor-outdoor flow.

Big on space. Big on lifestyle. Built to impress.

## Inclusions:

- 20mm stone benchtops
- Upgraded wide architectural mouldings.
- Blinds to all windows
- Soft close to all cabinetry
- Westinghouse appliance package
- Bradnams signature entry door
- Security screens to sliding glass doors and windows
- Luxury Vinyl Plank Flooring throughout
- Fans throughout
- Exposed Aggregate driveway
- Mizu Drift Tapware Range
- Fully fenced yard
- Landscaping package including fully turfed yard and planted and mulched garden beds
- 7+ star energy Rating
- Fixed Price, Turn Key, House and Land Package
- Air Conditioning as standard to 3 x Rooms



**RMW**  
PROPERTY AGENTS

**AREI**

Contact Rory Wex today 0414 134 265

[rory@rmwpa.com.au](mailto:rory@rmwpa.com.au)