

# THE NEWPORT 198

House & Land From \$955,900.00



JONES BUILDING  
GROUP



12.1M HOUSE WIDTH 18.3M HOUSE LENGTH

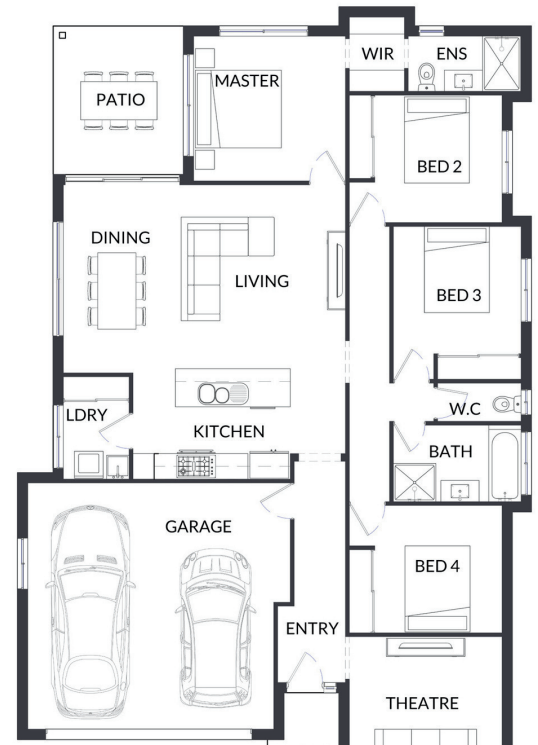
4 2 2 198 SQ. M.

The Newport 198 offers spacious open plan living, WIR and ensuite in your private master suite and secluded theatre away from the main living area, while having 4 bedrooms, DLUG and 2 bathrooms all under 198m<sup>2</sup> Gross floor area.

Our team can partner this design with a 990m<sup>2</sup>+ allotment in Inverness and position for northern aspect from outdoor patio and living areas, while taking advantage of the prevailing breezes through the home.

#### Inclusions:

- 20mm stone benchtops
- Upgraded wide architectural mouldings.
- Blinds to all windows
- Soft close to all cabinetry
- Westinghouse appliance package
- Bradnams signature entry door
- Security screens to sliding glass doors and windows
- Luxury Vinyl Plank Flooring throughout
- Fans throughout
- Exposed Aggregate driveway
- Mizu Drift Tapware Range
- Fully fenced yard
- Landscaping package including fully turfed yard and planted and mulched garden beds
- 7+ star energy Rating
- Fixed Price, Turn Key, House and Land Package
- Air Conditioning as standard to 3 x Rooms



**RMW**  
PROPERTY AGENTS

**AREI**

Contact Rory Wex today 0414 134 265

✉ [rory@rmwpa.com.au](mailto:rory@rmwpa.com.au)