

THE LENNOX 233

House & Land From \$1,049,400.00



JONES BUILDING GROUP



15.5M HOUSE WIDTH 22.2M HOUSE LENGTH



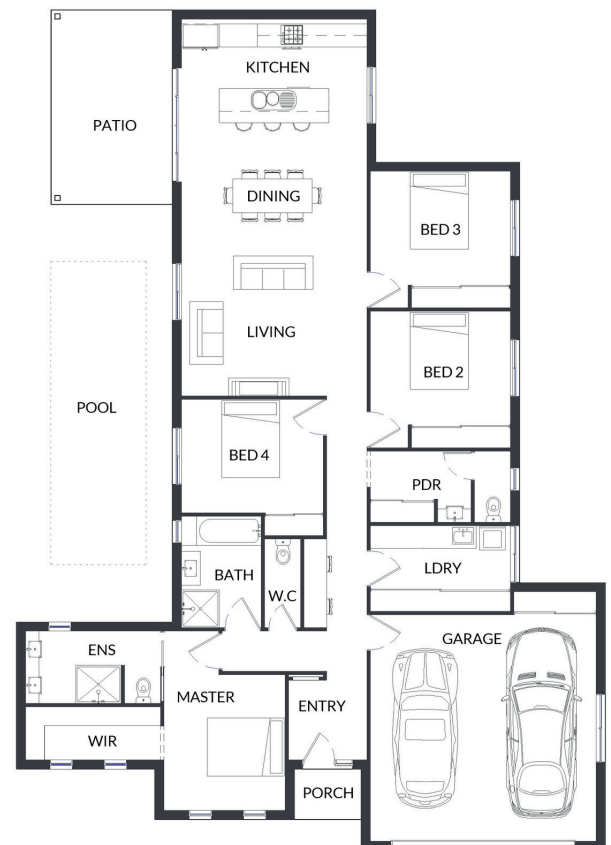
The Lennox 233 blends classic architectural styling with the ease of modern living, delivering timeless elegance without compromising on today's must-have comforts.

Featuring four generous bedrooms, three well-appointed bathrooms and a double garage, this thoughtfully designed home offers space, sophistication and everyday practicality for growing families.

Classic by design. Comfortable by nature.

Inclusions:

- 20mm stone benchtops
- Upgraded wide architectural mouldings.
- Blinds to all windows
- Soft close to all cabinetry
- Westinghouse appliance package
- Bradnams signature entry door
- Security screens to sliding glass doors and windows
- Luxury Vinyl Plank Flooring throughout
- Fans throughout
- Exposed Aggregate driveway
- Mizu Drift Tapware Range
- Fully fenced yard
- Landscaping package including fully turfed yard and planted and mulched garden beds
- 7+ star energy Rating
- Fixed Price, Turn Key, House and Land Package
- Air Conditioning as standard to 3 x Rooms



RMW
PROPERTY AGENTS

AREI

Contact Rory Wex today 0414 134 265

rory@rmwpa.com.au