

THE ESPERANCE 207

House & Land From \$980,100.00



JONES BUILDING GROUP



13.8M HOUSE WIDTH 20.1M HOUSE LENGTH

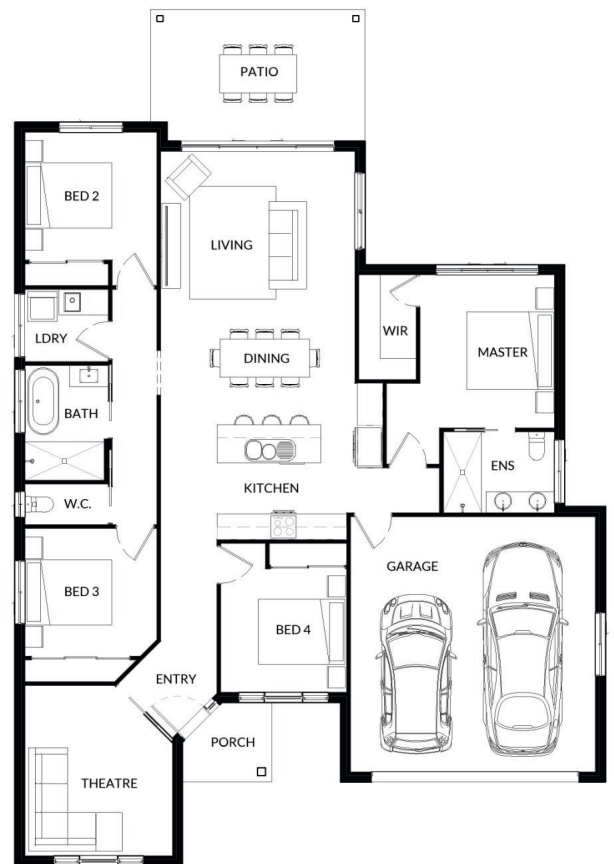


The Esperance 207 is a standout home that delivers style and functionality in equal measure. Featuring four bedrooms, two bathrooms, a dedicated media room and double lock-up garage, this thoughtfully designed home offers everything a modern family needs.

The spacious open-plan living flows effortlessly to a large outdoor patio - perfect for relaxed Yeppoon living. All this on a generous block in Yeppoon for under \$900,000.

Inclusions:

- 20mm stone benchtops
- Upgraded wide architectural mouldings.
- Blinds to all windows
- Soft close to all cabinetry
- Westinghouse appliance package
- Bradnams signature entry door
- Security screens to sliding glass doors and windows
- Luxury Vinyl Plank Flooring throughout
- Fans throughout
- Exposed Aggregate driveway
- Mizu Drift Tapware Range
- Fully fenced yard
- Landscaping package including fully turfed yard and planted and mulched garden beds
- 7+ star energy Rating
- Fixed Price, Turn Key, House and Land Package
- Air Conditioning as standard to 3 x Rooms



Contact Rory Wex today 0414 134 265

 rory@rmwpa.com.au