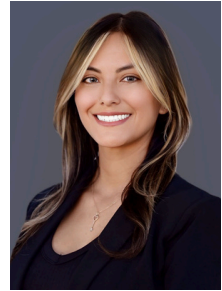


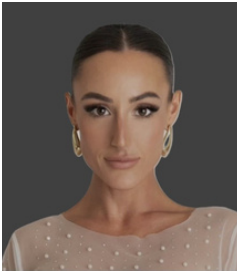
P
A
R
T
N
E
R
S
H
I
P
T
E
A
M



Melany Edwards-Barton
Chief Executive Officer



Maria Jimenez
Director of Community Engagement



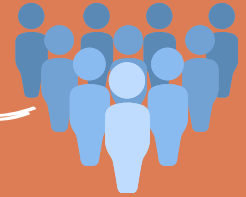
Krystyna Boleslawski
Director of Member Engagement



Krystal Gomez
Office Administrator

36 NEW MEMBERS

81% MEMBER Retention Rate



EVENTS 42
Totaling Over **1,600 ATTENDEES**

RIBBON CUTTINGS 11



OVER



5,000

Business Directories Distributed
Including: **3000 Maps**

DIRECTORY HITS 516,540 Member Exposures

visits to www.skyislandsrp.com

17,728 site visits

page visits **28,624**

From Our CEO:

Dear Members,

As we reflect on 2025, one word rises above all others: growth. Growth in our reach, growth in our partnerships, and most importantly—growth in our collective impact across southern Arizona.



This year marked an important chapter for our organization. Together, we expanded our network, strengthened our voice, and advanced meaningful conversations about the region's economic future. From supporting local businesses and entrepreneurs to convening leaders around shared challenges and opportunities, your engagement helped turn vision into action. None of this progress would have been possible without the unwavering commitment of our members.

Your loyalty and dedication are the foundation of our success. Whether you participated in events, served on committees, mentored emerging leaders, or simply chose to renew your membership, you demonstrated a deep belief in collaboration and a shared responsibility for building a stronger southern Arizona. At every step, your involvement amplified our ability to advocate, convene, and lead.

We are especially proud of how our organization has grown in purpose. In a time of rapid change, our members leaned into innovation while remaining grounded in the values that define our region: resilience, opportunity, and community. Together, we strengthened relationships across industries, communities, and borders—reinforcing southern Arizona as a place where businesses can thrive and people can belong.

As we look ahead, our momentum is undeniable. The challenges before us are real, but so is our capacity to meet them—because we meet them together. With your continued partnership, we will keep investing in leadership, championing economic development, and shaping a future that reflects the ambitions of our region.

Thank you for standing with us, believing in our work, and committing your time, energy, and trust to this shared mission. We are deeply grateful for your membership and honored to serve you.

With appreciation and optimism,

Melany Edwards-Barton, IOM

Chief Executive Officer

Sky Islands Regional Partnership & Foundation

Board of Directors

Eric Grisham

Chairperson
Arizona@Work

Cosette Britton

Past Chair
Canyon Vista Medical

Cory East

SSVEC

Kelly Hyman

Synergy HomeCare SV

Brandon Jeter

BSI Group, Inc.

J. Wayne Lawson

Rinaldo Manago

Agile Defense

Marilyn Nation

Rocking Horse Antique Mall

Mike Smith

Truly Nolan

Regina Swan

Comfort Inn & Suites

Jay Williamson

American Southwest Credit
Union

Our Board Chairperson:

Eric Grisham, Arizona@Work Board Chairperson



Executive Committee Officers

Eric Grisham Chairperson

Business Services Representative
Arizona@Work-Southeastern
Arizona
Member since 1985

Cosette Britton Past Chairperson

Chief Nursing Officer
Canyon Vista Medical Center
Member since 1962

Mike Smith Chair-Elect

Operations Manager
Truly Nolen of America
Member since 2004

Regina Swan Treasurer

General Manager
Best Western Plus Sun Canyon
Member since 2018

Kelly Hyman Secretary

Owner
Synergy HomeCare of Sierra Vista
Member since 2022



Dear Members, Partners, and Supporters,

It's an honor to step into the role of Chairperson for the Sky Islands Regional Partnership—and I'm ready to get to work.

First, I want to recognize the leadership that got us here. Thank you to our outgoing Chair, Cosette Britton, for setting the pace and helping move this organization forward. I also want to call out the people behind the scenes who make this work happen every day—our staff, board members, and ambassadors. They don't just talk about supporting business—they do it.

This past year was a shift in how we think, how we operate, and how we show up for this region. We are no longer thinking small or isolated—we are operating as a true regional partnership. That means stronger connections, more opportunity, and a louder, more unified voice for business across Cochise County.

Let's be clear—this organization exists for one reason: you. You're the ones taking risks, creating jobs, and keeping our local economy moving. Our job is to make sure you have more visibility, stronger connections, better access to opportunity, and a real voice in shaping the business environment around you. And we're just getting started.

We're building momentum—expanding partnerships, investing in leadership, supporting entrepreneurs, and creating real pathways for growth across this region. The goal isn't activity. The goal is impact. And we're focused on delivering results that actually matter to our members.

But this only works if you're part of it. Show up. Get involved. Take advantage of what's being built here. Because the more connected you are, the more powerful this partnership becomes—for you and for the entire region.

We're not here to maintain—we're here to move things forward. Thank you for your investment, your trust, and your commitment to this region. I'm looking forward to what we're going to accomplish together.

Sincerely,
Eric Grisham
Chairman of the Board
Sky Islands Regional Partnership
Connecting business. Creating opportunity. Strengthening our region.

Our Foundation Board Chairperson:

Mike Smith, Truly Nolan Board Chairperson



Dear Friends and Supporters,

As Chairperson of the Sky Island Regional Foundation, I would like to extend my sincere gratitude to all of our incredible supporters. You are the driving force behind our Adult Leadership Program, making it possible for us to continue developing strong, capable leaders in our communities.

Because of your generosity, we are also excited to launch our youth leadership initiative, the Future Forward Leadership Camp, beginning in January 2027. This program will help guide young individuals as they grow into confident, capable leaders of tomorrow.

In addition, your support allows us to continue empowering businesses through the University of Arizona Center for Innovation business incubator, helping entrepreneurs grow and succeed.

At the heart of our foundation is a commitment to strengthening leadership at every stage, supporting established professionals while nurturing the next generation with the tools they need to thrive.

None of this would be possible without you. Thank you for your continued belief in our mission and for helping us build a stronger future.

With deep gratitude

Sincerely,

Mike Smith

Chairman of the Board
Sky Islands Foundation

Sky Islands Foundation:

Mike Smith

Board Chairperson
Truly Nolan

Mike Hyman

Chair-Elect
Synergy HomeCare

Jennifer Sorenson

Secretary/Treasurer
Herald/Review Media

Amanda Mancini

Board Member
Canyon Vista Medical Center



**Thank you for
your service!**

Jason Bowling

CEO
SSVEC

7-years on the board

Gloria Grab

Cross Country Mortgage
6-years on the board

Brenda Pettitt

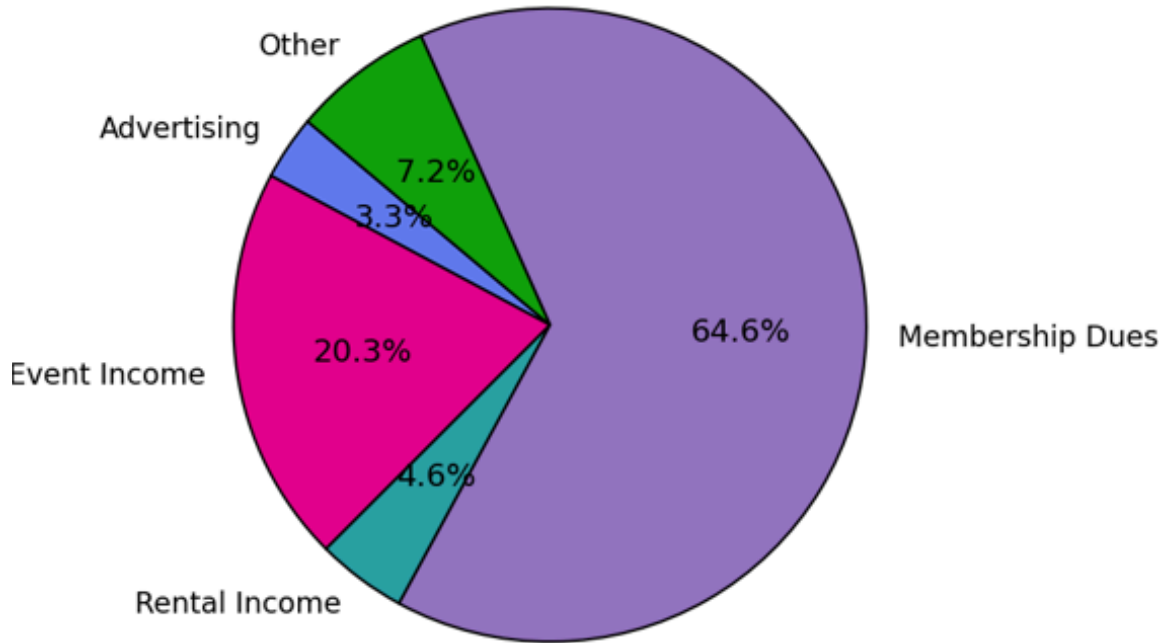
Haymore Real Estate, LLC
6-years on the board

Phil Vega

5-years on the board



2025 Percentage of Revenue



2025 Percentage of Expenses

