

Women's Perfect Tri® Long Sleeve Tunic Tee. DT132L



Long sleeve tunic version of our lightweight and soft crew.

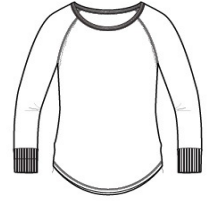
- 4.5-ounce, 50/25/25 poly/combed ring spun cotton/rayon, 32 singles
- Tear-away label
- Raw edge detail at armholes
- Coverstitch details
- 1x1 Rib knit neck
- Rib knit elongated cuffs
- Longer tunic length
- Curved hem

Please note: This product is transitioning from woven labels to tear-away labels. Your order may contain a combination of both labels.

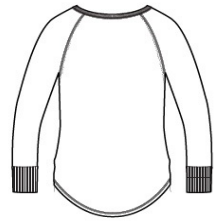
Tri-Blend fabric infuses each garment with unique character. Please allow for slight color variations. Due to the heat sensitivity of tri-blend fabrics, special care must be taken throughout the printing process. Consult your decorator or ink supplier for best printing practices.

CARE INSTRUCTIONS

Machine wash cold, with like colors. Only non-chlorine bleach. Tumble dry low. Warm iron if necessary.

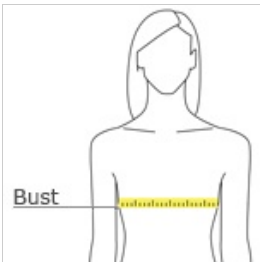


front



back

HOW TO MEASURE



BUST

Measure under the arm and around the fullest part of the bust with arms down, keeping tape horizontal.

SIZE CHART

	XS	S	M	L	XL	XXL	3XL	4XL
Size	2	4/6	8/10	12/14	16/18	20/22	24/26	28/30
Bust	32-34	35-36	37-38	39-41	42-44	45-47	48-51	52-55

COLOR INFORMATION



Black Frost
PMS 426C



Blush Frost
PMS 2341C



Grey Frost
PMS COOL GREY
11C



Navy Frost
PMS 2379C



White