

PROFICO ALUMINUM AND GLASS EXPERTS



"Glazing Perspectives Since 1988"



COMPANY OVERVIEW

A Brief Story About The Company

Profico Aluminum and Glass Experts is an international leading provider of innovative aluminum and glazing solutions, delivering exceptional craftsmanship and reliable service to residential, commercial, and industrial clients. With a reputation built on quality, precision, and professionalism, Profico specializes in the design, fabrication, and installation of high-performance aluminum and glass systems tailored to meet the unique needs of every project.

Since our establishment in 1988, we have been committed to excellence in every detail — from sleek architectural facades and curtain walls to custom windows, doors, partitions, louvers, and balustrades. Our team of skilled professionals combines technical expertise with cutting-edge technology to ensure each project achieves the perfect balance of aesthetics, durability, and functionality. Over the years, we have been operating in Lebanon, the Middle East, and Africa, making Profico's greatest asset its strong client base and solid reputation.

VISION

To be the trusted partner of choice for comprehensive, innovative and high-quality aluminum and glazing systems in the region and beyond.

MISSION

Profico aims to provide superior aluminum and glass solutions that combine aesthetics, strength, and sustainability while exceeding client expectations. Driven by innovation and guided by integrity, Profico Aluminum and Glass Experts continues to set new standards in quality and service across the aluminum and glazing industry.

CORE VALUES



01 Quality Excellence

Always committed to deliver aluminum and glazing products and services with high quality, meeting the highest quality standards of the industry. We focus on every detail, finish and installation to provide precise and durable work.

02 Innovation

Continuously open to the use of the industry's new technologies and creative design approaches which allows us to provide advanced aluminum and glazing solutions. As a result, we can achieve the functionality and aesthetics needed for every project.

03 Sustainability

Dedicated to maintain environmentally responsible practices, using materials and methods that optimize energy efficiency and sustainable design.

04 Tailored Solutions

Our clients are our priority. We listen, understand, and deliver solutions tailored to each customer's unique needs, ensuring satisfaction at every stage of the project.

05 Talent

Highly-qualified teams working in the engineering and design, sales and procurement fields, always ready to help you. Our team works closely with architects, contractors, and clients to ensure seamless communication and successful outcomes.

06 Integrity

Honesty and transparency are at the heart of our business. We build lasting relationships with clients, partners, and employees based on trust and accountability.

WHY CHOOSE US?

- ✓ Experience and Expertise
- ✓ Tailored Solutions
- ✓ High Quality Material
- ✓ Commitment to Deadlines
- ✓ Innovative Design & Technology
- ✓ Exceptional After-Sales Support
- ✓ Safety First
- ✓ Strong and very well established supply chain



PRODUCTS AND SERVICES

Facade Engineering

Profico provides Facade engineering services that guide every stage of your exterior design, from early planning to final review, ensuring your building stays safe, durable and visually clear.

Our Engineering Department provide support for full facade studies, material choices, drawings and technical checks, helping your project meet strong building standards and long-term performance needs.



PRODUCTS AND SERVICES

Aluminum Contracting

Aluminum Windows and Doors: Different types and Opening mechanisms

A wide variety of aluminum doors and windows, including sliding, hinged, bi-fold, tilt & turn and fixed systems, can be designed, manufactured, and installed by our teams. Strength, insulation, and weather resistance are key criteria considered at Profico while maintaining a sleek, contemporary appearance.



Curtain Wall and Structural Glazing Systems

At Profico, Curtain wall and structural glazing systems are engineered to deliver architectural elegance together with high performance. These systems are ideal for commercial and high-rise buildings since they are designed to maximize natural light and provide excellent thermal and acoustic insulation.



Glass Partitions and Office Systems

We supply and install sophisticated glass partition systems that create open, modern, and light-filled interior environments. Perfect for offices, showrooms, and commercial spaces, our partitions can be customized with clear, frosted, or tinted glass for privacy and design flexibility.



Balustrades and Railings

Our frameless and semi-framed glass balustrades add safety and sophistication to balconies, staircases, and terraces. Each system is engineered to meet safety standards while offering an elegant, unobstructed view.



Canopies and Skylights

Profico's custom-designed skylights and glass canopies bring natural light into interior spaces and provide weather protection for entrances and walkways. Built with durable aluminum frames and high-quality glass, they offer both beauty and performance.



Canopies and Skylights



Aluminum Cladding

We provide innovative cladding and façade systems that enhance the visual identity and energy efficiency of buildings. Our designs are available in a variety of finishes and colors to complement any architectural style.



Aluminum Fins and Louvers

At Profico Aluminum and Glass Experts, we design and fabricate high-performance aluminum fins and louver systems that combine architectural beauty with functional efficiency. Our solutions are engineered to enhance building aesthetics while improving shading, ventilation, and energy efficiency.



Custom Products

Every project is unique — and so are our solutions. We provide tailor-made aluminum and glass products designed to meet specific architectural and performance requirements, backed by professional installation and technical expertise.



Aluminium Systems

- Technal France FX GX MX, FXi GXi MXi
- Lift & Slide
- Technal France Lumeal
- Technal France Soleal FY GY
- Folding System
- Slim Profiles
- Unitized Curtain Wall System
- Folding Glass Curtain
- Technal Opal / Office Partitions
- Sidem 2000

Trading

Aluminum Accessories

- A wide range of aluminum accessories available for wholesale and retail, to match all your business needs.



Glass Accessories

- Polysulfide (Theocole)
- Aluminum Spacer Bars
- Butyl Cylinders, Butyl Double Tape
- Desiccant (Molecular Sieve)
- Georgian Bars, Decorative Bars
- Stainless Steel Accessories for Glass
- Two Component Silicone Drums

Float Glass

- Clear glass
- Tinted glass
- Reflective glass
- Laminated glass
- Low emissivity glass (Low E Glass)
- Patterned and wired glass



Tempered & Laminated Glass

- Impact-resistant safety glass for residential and commercial use
- Available in various thicknesses, tints, and finishes
- Ideal for storefronts, balconies, and curtain walls
- Decorative Glass

Glass Fabrication

Glass Doors & Partitions

- Frameless glass doors, office partitions, and shower enclosures
- Sleek, space-saving designs for contemporary interiors
- Custom hardware options (hinges, handles, locks)

High-Performance Double-Glazed Solutions

- Energy-efficient glass solutions that reduce noise and heat transfer
- Perfect for modern buildings seeking sustainability and comfort

Decorative & Tinted Glass

- Frosted, sandblasted, patterned, or colored glass options
- Ideal for privacy and aesthetic enhancement
- Custom etching and design available
- Low Emissivity (Low E) Glass for heat control and energy efficiency
- Acoustic Glass for sound and noise reduction
- Solar Control Glass (Reflective Glass)



FULL -SERVICE CAPABILITY AND PROJECT MANAGEMENT

We provide full service throughout the project, from its initial design stage and consultation to fabrication, installation and handing over.

At Profico Aluminum and Glass Company, we believe that every successful installation begins with precise planning and expert coordination. Our Project Management Team ensures that each glass and aluminum project — from concept to completion — is executed with efficiency, transparency, and excellence.

OUR APPROACH

- Consultation & Planning
- Design & Technical Support
- Procurement & Fabrication
- Installation & Supervision
- Quality Assurance & Handover

OUR COMMITMENT

- On-time Delivery
- Cost Control
- Safety First
- Client Collaboration
- **Your Project, Our Priority**

MAINTENANCE SERVICES

- Glass Cleaning & Restoration
- Sealing & Weatherproofing
- Hardware Inspection & Adjustment
- Glass & Frame Replacement
- Preventive Maintenance Contracts

OUR COMMITMENT

“Sustaining Quality, Preserving Clarity — That’s the Profico Promise.”



OUR FACTORIES

PRODUCTION LINES

ALUMINUM FACTORY

At Profico Aluminum and Glass Company, our Aluminum Fabrication Factory represents the perfect blend of technology, craftsmanship, and quality assurance. Built to meet the growing demand for precision-engineered aluminum systems, our facility delivers high-performance products that meet the most stringent architectural and industrial standards.

A- Aluminium Profile Fabrication

We specialize in cutting, milling, drilling, punching, and assembling aluminum profiles for a wide range of products including:

- Windows, doors, and curtain wall systems
- Skylights, partitions, and balustrades
- Louvers, cladding panels, and shopfront systems

Every component is manufactured under strict dimensional control to ensure perfect fitting and superior finish.

OUR FACTORIES

PRODUCTION LINES

ALUMINUM FACTORY

B- Assembly and Quality Control

Each system is pre-assembled and tested in our facility before dispatch. Our quality assurance team verifies:

- Dimensional accuracy
- Smooth operation of moving parts
- Uniform coating and sealing
- Compliance with international standards (ASTM, BS, ISO)

C- Machinery and Equipment

Our aluminum factory is equipped with advanced European and locally integrated machinery that ensures accuracy, consistency, and efficiency in every step of production.

Key Aluminium Machinery

- Double Head Cutting Machines: For precision angle and straight cuts on aluminum profiles
- CNC Machining Centers: Automated multi-axis machines for complex drilling and milling tasks
- End Milling Machines: For shaping and preparing aluminum profile joints
- Copy Routing Machines: For slotting and hole-making on door and window profiles
- Punching Machines: For notching and joint punching with interchangeable dies
- Corner Crimping Machines: For seamless and strong corner assembly of frames
- Automatic Glazing Bead Cutting Machines: Ensuring perfect alignment for glass installation
- Profile Bending Machines: For creating curved or custom-shaped aluminum elements

Each machine is operated by trained technicians under the supervision of our engineering and quality departments, ensuring every fabricated product meets Profico's high standards of performance and aesthetics.

Technology and Innovation

We continuously invest in CAD-based design, CNC technology, and automated assembly systems to deliver accuracy and efficiency. This allows us to handle projects of varying scale — from bespoke architectural features to large commercial façades — with consistency and precision.

Sustainability and Efficiency

Profico's factory operations follow eco-conscious manufacturing practices, including:

- Aluminum scrap recycling and material optimization
- Energy-efficient curing ovens and air filtration systems
- Compliance with environmental and safety regulations

OUR STRENGTHS

ALUMINUM FACTORY

“Engineering Precision, Fabricating Excellence — Profico Aluminum Factory.”

**PRECISION-
ENGINEERED
PRODUCTS USING
STATE-OF-THE-ART
EQUIPMENT**

**SKILLED
TECHNICIANS
AND CERTIFIED
QUALITY
INSPECTORS**

**END-TO-END
PRODUCTION — FROM
RAW ALUMINUM
PROFILES TO FINISHED
SYSTEMS**

**RAPID TURNAROUND
AND STRICT
ADHERENCE TO
PROJECT TIMELINES**



OUR FACTORIES

PRODUCTION LINES

GLASS PROCESSING FACTORY

At Profico Aluminum and Glass Company, our Glass Processing Factory stands at the forefront of innovation and precision in architectural glass solutions. Equipped with modern machinery and operated by experienced technicians, our facility produces a full range of high-quality glass products designed to meet the most demanding residential, commercial, and industrial specifications.



Double- Glazing Machine

Key Glass Machinery & Equipment

CNC Glass Cutting Table	Precision automatic cutting with optimized nesting software
Glass Edge Polishing Machine	Smooth and accurate edge finishing for safety and aesthetics
Glass Drilling Machine	Dual-head drills for holes, notches, and cutouts
Glass Washing Machine	Multi-stage washing and drying system for clean, dust-free glass
Tempering Furnace	Heat-strengthening system for safety and durability
Laminating Line (EVA)	Bonding glass sheets with safety interlayers
Insulated Glass Unit (IGU) Line	Assembly and sealing of double and triple glazed panels
Sandblasting Machine	Frosted decorative finishes and surface texturing

Our glass factory features cutting-edge machinery sourced from leading European and international manufacturers, ensuring world-class quality and performance.

Quality Assurance

Our factory follows strict quality control procedures at every production stage.

Each glass product undergoes:

- Dimensional and surface inspection
- Optical clarity and edge finish checks
- Thermal stress and impact resistance testing (for tempered and laminated units)

We comply with international standards such as ASTM, BS, EN, and ISO, ensuring safety, durability, and visual excellence.



Lamination Line

OUR STRENGTHS

GLASS FACTORY

“Shaping Transparency, Engineering Strength — Profico Glass Factory.”

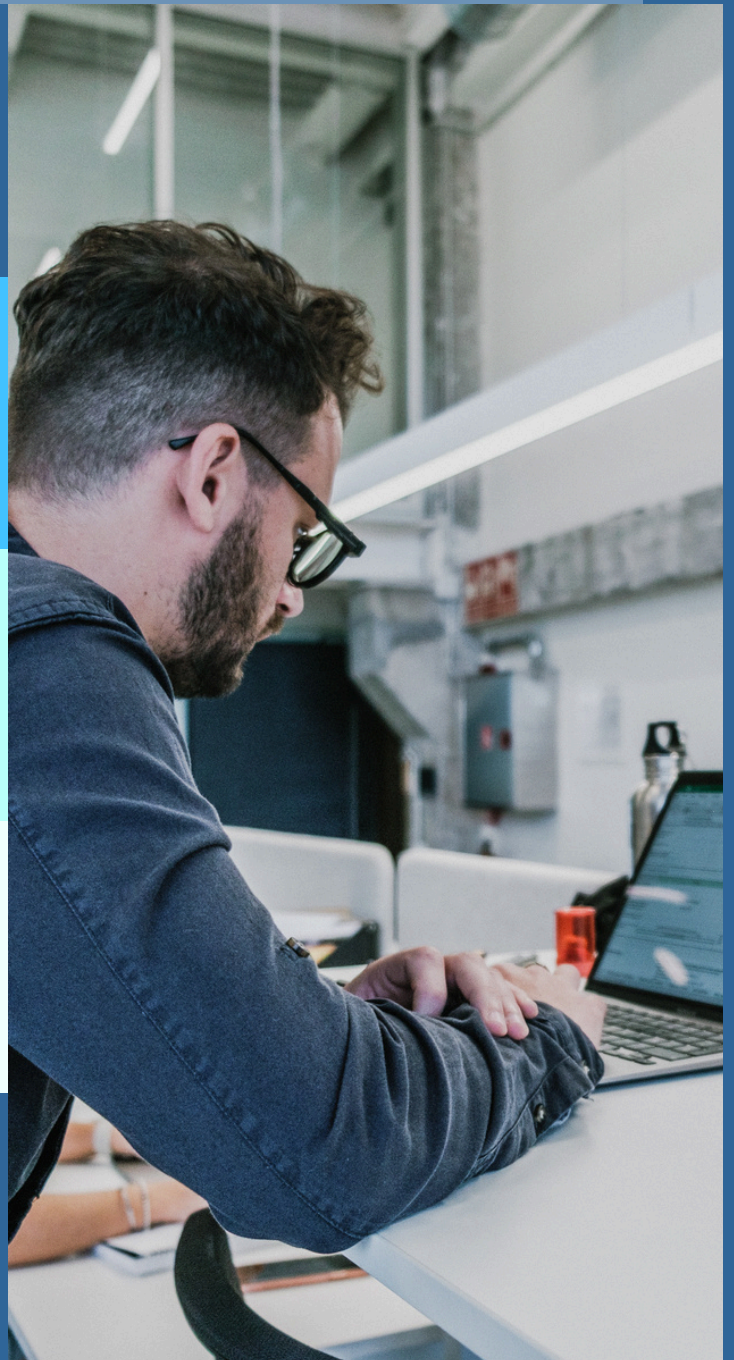
**MODERN AUTOMATED
MACHINERY FOR
PRECISION AND
CONSISTENCY**

**WIDE RANGE OF
GLASS TYPES
AND FINISHES**

**IN-HOUSE QUALITY
CONTROL AND
TESTING**

**FAST TURNAROUND
AND LARGE-SCALE
PRODUCTION
CAPACITY**

**SEAMLESS
INTEGRATION WITH
PROFICO ALUMINUM
SYSTEMS**



PROJECTS PORTFOLIO

A Brief Story About The Portfolio

The following pages present a list of Profico's Aluminum and Glazing Projects including different scope of works.



LMC HOSPITAL

Al Hadath - Beirut



LMC HOSPITAL



LMC HOSPITAL

MAIN ENTRANCE FACADE



The project includes a wide variety of aluminum and glazing works including:

- Internal Aluminum Partitions with Tempered Laminated Glass and High-Pressure Laminate HPL Material Infill
- Aluminium Louvers with Mesh
- Technal Doors and Windows
- Shower Doors - Tempered Laminated Glass with Milky EVA and High-quality Stainless Steel Accessories
- Entrance Façade - Technal MX Curtain Wall System
- Glass Canopies with Steel Structure and Spider System
- Aluminum Technal MX Canopy
- HPL Cladding for Interior Rooms
- Swinging Doors
- Glass Counters

LMC HOSPITAL

INTERNAL HPL AND GLASS PARTITIONS



LMC HOSPITAL

INTERNAL HPL AND GLASS PARTITIONS



LMC HOSPITAL

INTERNAL HPL AND GLASS PARTITIONS



KORRI STAR CENTER

Al Ghoheiry - Beirut



KORRI STAR CENTER



The project includes a wide variety of aluminum and glazing works including:

- **Internal Offices Sanblasted Glass Partitions with Aluminium Frame**
- **Aluminium Doors and Windows**
- **Façade - Technal MX Curtain Wall System - Structural Glazing**
- **Aluminium Louvers and Fins**
- **Aluminum Composite Panels**
- **Automatic Sliding Doors - Glass and Aluminium**

REE HOSPITAL

Beirut



REE HOSPITAL

INTERNAL HPL AND GLASS PARTITIONS



The project includes a wide variety of aluminum and glazing works including:

- **Internal Aluminum Partitions with Tempered Laminated Glass and High-Pressure Laminate HPL Material Infill**
- **Technal Doors and Windows**
- **Shower Doors - Tempered Laminated Glass with Milky EVA and High-quality Stainless Steel Accessories**
- **Entrance Façade - Aluminium Composite Panels Cladding**
- **Glass Counters**

KARMA HEIGHTS - MEDYAR

Damour, Lebanon

The project is composed of 112 Villas that are under construction, we are covering all aluminum and glass works including:

- Technal- Sidem 2000- Lift and Slide doors and windows
- Technal MX Curtain wall facades
- Aluminum louvers
- Tempered Laminated Glass Balustrades and Stair glass
- Shower doors
- Skylights
- Canopies



KARMA HEIGHTS - VILLAS

CURTAIN WALL FACADES



KARMA HEIGHTS - VILLAS

CURTAIN WALL FACADES



KARMA HEIGHTS - VILLAS

39



CURTAIN WALL
GLASS BALUSTRADE
DOORS AND
WINDOWS
SKYLIGHT
ACP





KARMA HEIGHTS VILLAS

B.CHEZMOON VILLAGE

Bchamoun, Lebanon



B.CHEZMOON VILLAGE

Bchamoun, Lebanon



The project is composed of 6 Residential Building Blocks, we covered all aluminum and glass works including:

- **Sidem 2000 doors and windows**
- **Aluminum louvers**
- **Aluminium Balustrades with Laminated Glass**
- **Shower doors**
- **Pergola**

J TOWERS

Achrafiyeh, Lebanon



J TOWERS

Achrafiyeh, Lebanon



Four consecutive towers were executed in a period of six months, the project included the following items:

- **Curved Glass Balustrades- Fixed on a U-Channel**
- **Mechanical Louvers**
- **Glass Curtains**
- **General Aluminum Works including Doors, Windows, etc.**

J TOWERS

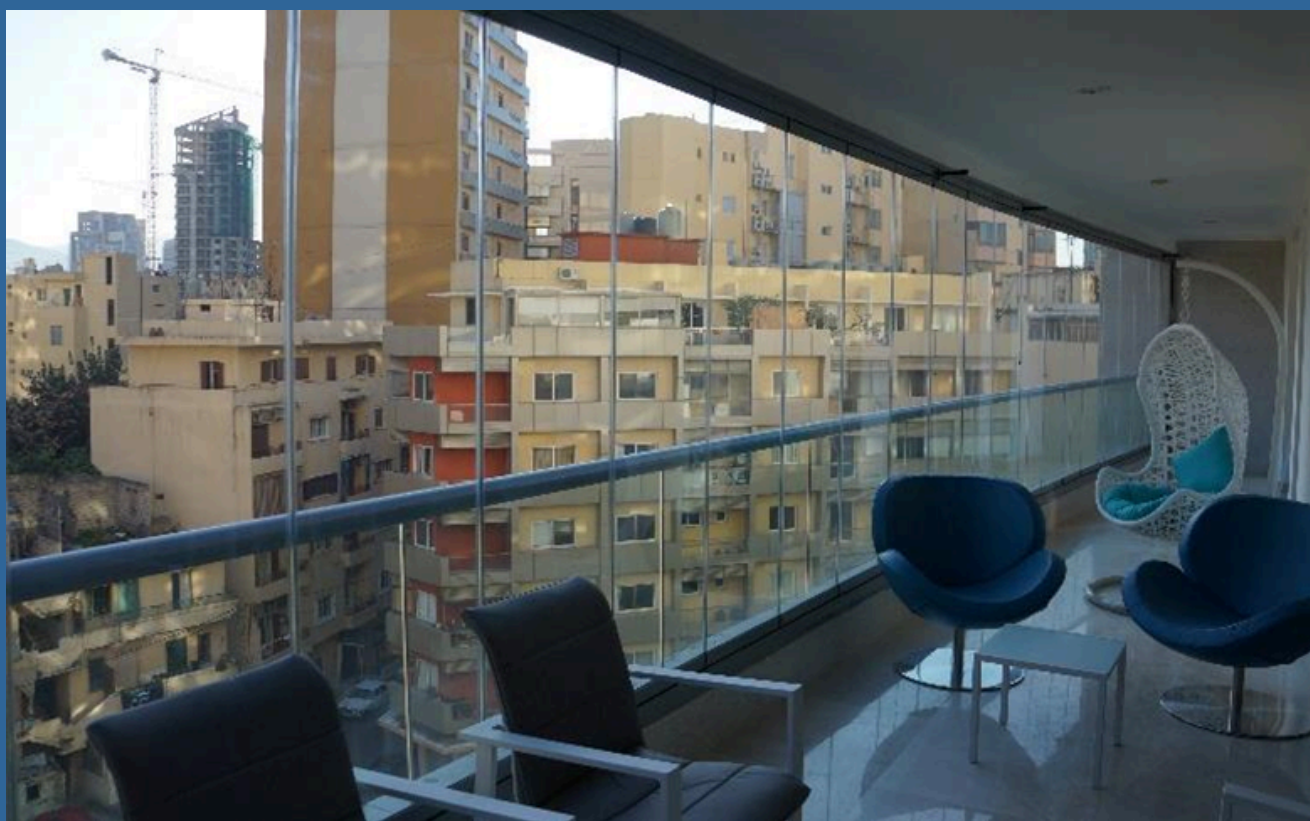
Achrafiyeh, Lebanon

ENTRANCE GLASS FACADE



J TOWERS

GLASS CURTAIN



LOUVERS

SKY TOWERS

Aramoun, Lebanon



The project consists of ten towers of an average height of twenty floors each. The project includes the following:

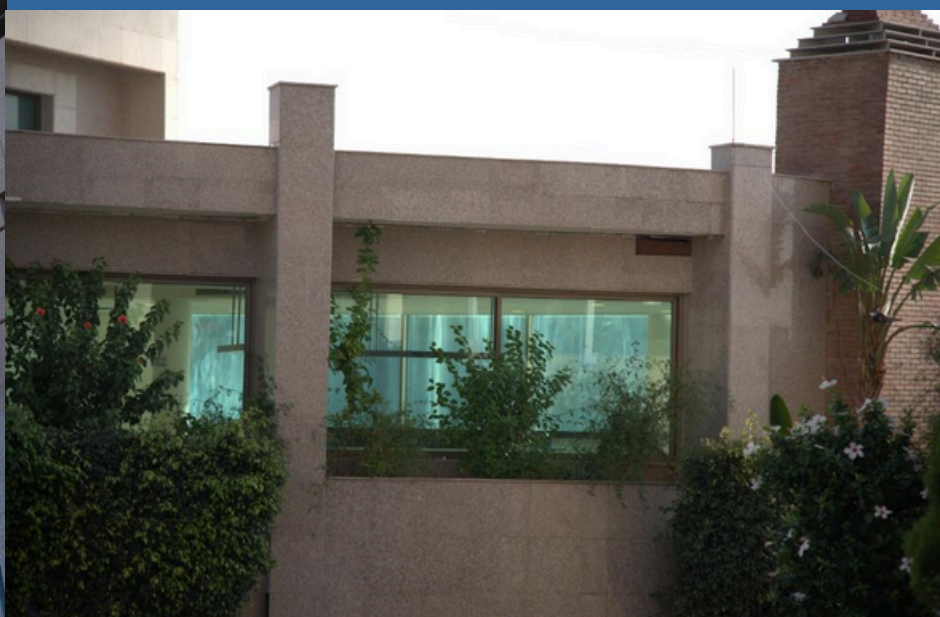
- **Laminated Glass Balustrades**
- **Mechanical Louvers**
- **General Aluminum Works including Doors, Windows, etc.**

SKY TOWERS



ALUMINUM LOUVERS

ENTRANCE GLASS FACADE



OMNIA BUILDING

Downtown, Beirut, Lebanon



OMNIA BUILDING

Downtown, Beirut, Lebanon



The project consists of a nine-floor residential / office building. The project includes the following:

- **Tempered Laminated Glass Balustrades**
- **Mechanical Louvers & Hinged Sun-shading system**
- **Aluminum Composite Panels Cladding**
- **General Aluminum Works including Doors, Windows, Escape Stairs etc.**

CFI CENTER

Dbayeh, Lebanon



CFI CENTER

Dbayeh, Lebanon



The project consists of the Supply of Double Glazed Structural Glass Units.

SAIFI VILLAGE

Downtown, Beirut, Lebanon



SAIFI VILLAGE



The project includes the following:

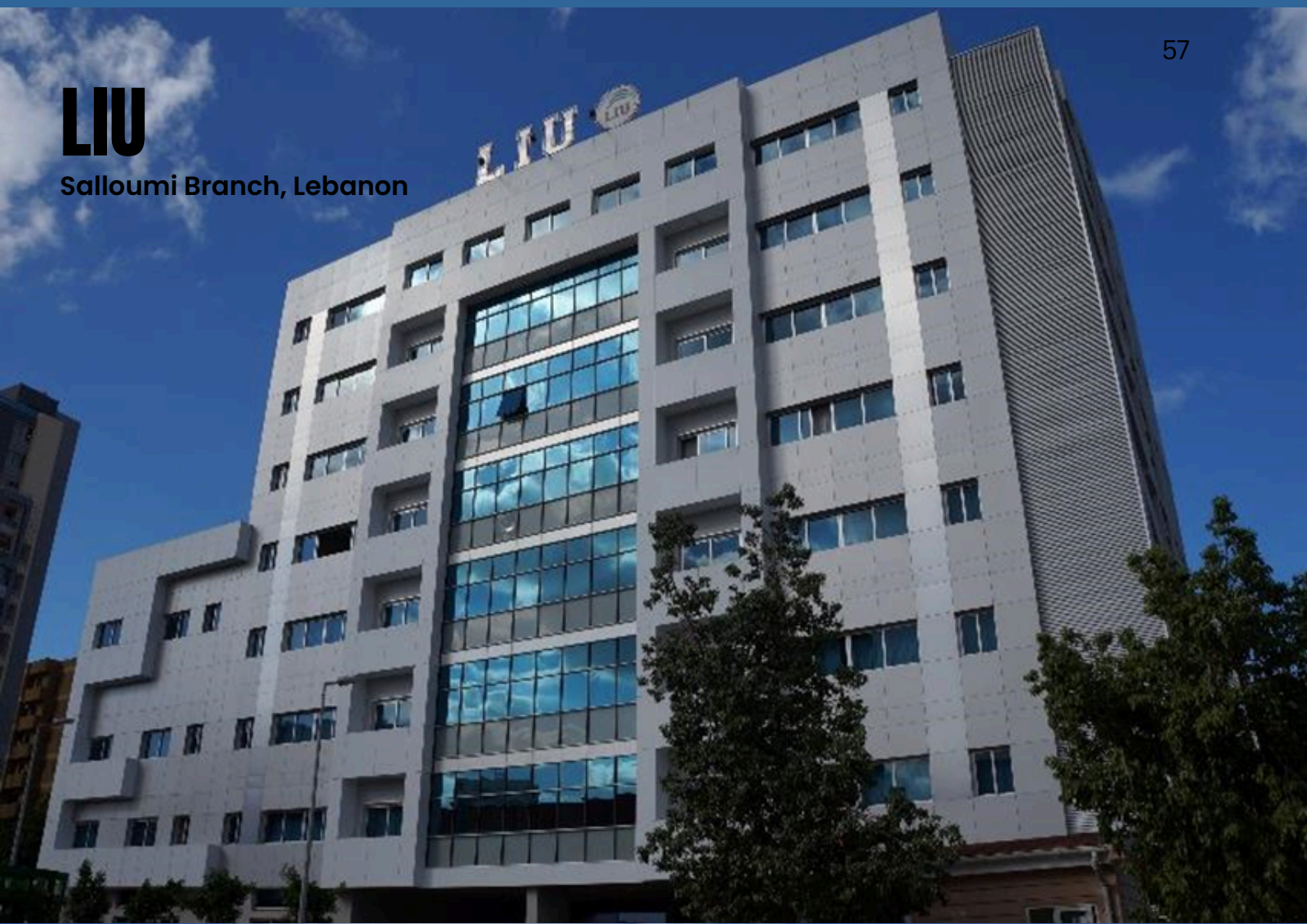
- Eleven-story curtain wall Technal MX system
- Technal GX and FX Aluminum Panels
- Lift and Sliding Door Systems
- High Glazing Specifications (Low E and Acoustic Glass)

SAIFI VILLAGE



LIU

Salloumi Branch, Lebanon



Salloumi Branch, Lebanon

The entire university campus was completed in a period of four months.

- Curtain Wall Facades (five facades)
- Aluminum Composite Panel Cladding
- Spider Systems and Tempered Glass Facades
- Mechanical Louvers
- General Aluminum Works including Doors, Windows, etc.





The project consists of five blocks which were accomplished through several phases. The project includes the following:

- **Aluminum Composite Panel Cladding**
- **Curtain Wall Facades**
- **Internal Office Partitions**
- **Mechanical Louvers**
- **Tempered Glass Entrances and Spider Systems**
- **General Aluminum Works including Doors, Windows, etc.**

SAIFI 688

Downtown, Beirut, Lebanon

The project consists of:

- Technal GX and FX Aluminum Systems
- Folding Glass Curtains
- Glass Balustrades



SEA VIEW PROJECT

Khaldeh, Lebanon



The project consists of the Supply and Installation of a Strcutural Glazed Facade.

TORMOS & HOTEIT COMMERCIAL CENTER

Ghobeiry, Lebanon



The project includes the following:

- Technal MX Curtain Walling System
- Aluminum Sliding and Hinged Windows

BELLE VUE COMPLEX

Kinshasa, Africa



Lying on a hill overlooking the city, and having an urban architectural view, the project is located in a prime residential district, on the main road "Boulevard de 30 juin", over a land of around 45,000 m².

- **The complex consists of 101 luxurious villas, along with their related services, green areas, telephone network, central satellite system, treated water supply, and emergency power supply.**

AZUR - TWIN TOWER

Kinshasa, Africa



Azur Project is located on prime location consisting of two identical buildings; each comprising of basement, ground floor and twelve identical floors.

Total Area: 12,700 sqm

GALERIE ROYALE KINSHASA

Kinshasa, Africa



Galerie Royale is located on prime location over a parcel with an area of 3,500m² and 22,000m² of constructed areas.

It comprises 88 furnished apartments, commercial center, shops, underground parking, facilitated with the highest European standard of services.

We are ready to assist you.

Contact us now to benefit from our products and services.



Choueifat, Industrial Area, Lebanon



+961 3 93 22 90 ;+961 3 26 57 52 ;+961 71 28 70 40



www.proficogroup.com



projects@proficogroup.com