



# ST. MATTHEW'S

The Anglican Church in the Glebe

## *Pulse of the Parish*

**MARCH 2026**

### **NUGGETS FROM JOHN'S GOSPEL**

**THE REVEREND GEOFFREY CHAPMAN**

The gospel of John is stunning and unforgettable, but can also be complex and even confusing. Here are a few key elements to help you on your journey through this gospel:

#### **I AM**

*Jesus replied, "I am he." Judas, who betrayed him, was standing with them. When Jesus said to them, "I am he," they stepped back and fell to the ground. (John 18:5-6)*

There are two ways in which Jesus says "I AM." The first, is by way of seven beautiful allegories describing Jesus the Word of God. They are: I am the bread of life, the light of the world, the good shepherd, the gate, the resurrection and the life, the way, the truth and the life, and the true vine. The second, is in John 18:5-6, when Jesus simply says the name of God, I AM, aloud, and the power is so intense, people physically react by falling to the ground.

Remember when Moses encounters God on the mountain top in the burning bush, and he asks for God's name, and God replies, "I am who I am." The name of God is too holy to speak aloud. But when Jesus says the faintest allusion to God's name, "I AM," that is enough to cause people to stumble upon encountering the power of God.

#### **Prologue as Lens**

*In the beginning was the Word, and the Word was with God, and the Word was God. (John 1:1)*

I have preached this several times these last few weeks, but the Prologue is a lens through which we can see the entire gospel. Jesus is the incarnated Word of God walking through the world, speaking to folks, eating and drinking,

living and ultimately dying on a cross. What can it mean for God, whose name cannot even be spoken, whose image cannot be created, to share a meal with us? It is an extraordinary allegory and teaching we encounter in every moment and in every conversation, and it both brings the gospel to life in a new way, and adds incredibly deep challenges to what might seem to be simple encounters with clear questions.



#### **The Great Commandment**

*I give you a new commandment, that you love one another. Just as I have loved you, you also should love one another. By this everyone will know that you are my disciples, if you have love for one another." (John 13-34-35)*

I am not sure how many Christians realize the "Golden Rule" to 'love your neighbour as yourself' is different in John's gospel. Jesus invites us instead to love others as Christ has loved us in the gospel of John. We are not always very good at loving ourselves. To love someone as much as we love ourselves could mean not a lot of love being shared. Loving others as much as we love us could sadly be inadequate. But if we learn anything from the gospels, it is that God loves us endlessly. And God wishes for us to love others as much as God loves us. This is a truly endless amount of love that cannot be overstated. Let us all agree John's take on the golden rule is a welcome challenge and perhaps an improvement!

*Continued on page 2*

# TABLE OF CONTENTS

Nuggets from John's Gospel – The Reverend Geoffrey Chapman

Centennial Capital Campaign Launched – Kevan Pipe

Scarf and Jewellery Sale – Virginia Lindsay

Finance and Stewardship Committee update – Charles Nixon

Director of Music News – Virginia Lindsay

Community at St. Matthew's – Virginia Lindsay

Crokinole at St. Matthew's – Heather Sheehy and Denis Martel

The Marmalade Project – Kathi Racine

Nativities of the World at St. Matthew's – Valerie Needham

Creation Matters Aiding First Nation Communities – Bill Nuttle

Creation Matters Plant-Sharing – Marg Terrett

Great Glebe Garage Sale – Tom Martin

Outreach News – Julia Lipinska

St. Matthew's Celebrates 40 Years – Ashley Thorvaldson

Out of the Cold Supper – Anita Biguzs

St. Matthew's Celebrates

St. Matthew's Remembers

Prayer Ministry – Janice Sonnen

What Just Happened to my Blue Bin? – Julia Lipinska

On Guilt and Virtue – *The New Yorker* – Ian Guthrie

The King James Version of the Bible – Heather Lewis

Breaking into Blossom – The Most Reverend J. Barry Curtis

Photography credits:

Valerie Needham, Mary Glen, Virginia Lindsay

John Coleman, Randi Goddard, Denis Martel

Kathi Racine, Tom Martin, png.pngtree.com



*Nuggets from John's Gospel continued from page 1*

There are so many important themes and details in John's gospel, and I am thankful for your curiosity and faithful engagement with this wonderful gospel which will only continue on Good Friday and Easter Morning as we encounter the crucified and then risen Jesus Christ, mistaken as a humble gardener.

Yours in Christ,

Geoff+

# CENTENNIAL CAPITAL CAMPAIGN LAUNCHED

KEVAN PIPE

On Sunday March 1, at its annual Vestry meeting, the parish formally approved the creation of a fund-raising campaign to be known as the Centennial Capital Campaign, designed to raise \$2 million over the next four and a half years to rectify our building's foundation issues including water leakage into critical areas, as well as to modernize and 'green' our heating system, thereby minimizing our carbon footprint.

Terms of Reference for a Centennial Capital Campaign Committee were distributed to attendees along with Campaign brochures and pledge forms, with the latter two items already posted on our website.

Led by Campaign Chair Kevan Pipe, the Committee is in the process of being formed. Members to date include our Rector, Reverend Geoff Chapman, Rector's Warden Janice Messam, Property Committee Chair Bill Nuttle and Stewardship Committee Chair Charles Nixon. In the weeks to come, additional members will be added as the Committee prepares for its first meeting on April 19.

Members of St. Matthew's who are interested in getting involved and/or donating to the Campaign are encouraged to contact the office or the Chair (kpipe@sympatico.ca). The magnitude of the challenge to generate these critical funds for the well-being and protection of our church is well understood by all and we will push ahead with as many viable measures as possible in the months and years to come.

The Committee's mandate is to raise funds which in turn will be administered by governance and financial systems already in place. The Committee has no spending authority. This will rest with Corporation based on the recommendations of the Property Committee.

There is no lock on good ideas and we welcome the input of all parishioners who believe they can contribute in any manner possible to the Campaign.

With meetings to be held monthly and the next update to Parish Council set for June, initial interest has been extremely encouraging, with \$122,000 pledged in support of the Campaign as of March 1. We will build on this positive start as we aim to see work commence on various aspects of the renovation program, certainly within the next year.

St. Matthew's was formed in 1898 and moved into our current building on December 21, 1930. Our intention is to have the culmination of the four and a half year Centennial Capital Campaign coincide with other centennial celebrations in December 2030. There is work ahead of us as we strive to protect our beautiful church for the next generation of members of the St. Matthew's family.

For Campaign brochures and pledge forms and for more information on the Campaign, please visit:

[2026+Capital+Campaign+Info-5a1b9d8b.pdf](#)

# SCARF AND JEWELLERY SALE

VIRGINIA LINDSAY

On December 7, St. Matthew's once again held a hugely successful Scarf and Jewellery Sale, netting over \$9,000 of which twenty five percent was donated to the Ottawa Food Bank. Each year, we wonder whether or not parishioners, their friends, their families and their neighbours have any scarves and jewellery left to donate but their drawers apparently remain full and bottomless.



We offered a wide range of vintage costume jewellery, sterling silver items, scarves, purses, hats and gloves as well as seasonal décor. Eager shoppers were lined up at 8:30 a.m. for the opening at 9:00 a.m. The success of the sale was completely due to the more than 25 volunteers who spent many hours patiently sorting, pricing, displaying and selling our merchandise. On behalf of Marg Terrett,

Kathi Racine and myself, I send sincere thanks to all our donors, volunteers and shoppers. Until next year!

# FINANCE AND STEWARDSHIP COMMITTEE UPDATE

CHARLES NIXON

First, I would like to welcome Andrew Bolick CPA as our new Treasurer approved at Vestry. He will be working closely with Kathy Laffin who has done such a great job as Treasurer and she will support Andrew as Bookkeeper.

Vestry is effectively our annual general meeting for St Matthew's. At the meeting, I made a presentation setting out how we did in 2025 and our budget for 2026 which Vestry supported. The budget and other vestry reports have been posted on our website and can be accessed here: [Files, Reports and Forms](#)

We did well last year - in a nut shell we held our costs to the 2025 budget and exceeded expectations in fund raising, rentals and investment income. This meant we had a surplus situation. However, we were not able to undertake all our capital projects.

The accounting firm, Parker Prins Lebano, reviewed our books and gave us a clean bill of health. Their report was circulated before the meeting.

Our 2026 Budget includes many areas of revenue and expenditure that varied little from last year. I would like to highlight a few areas of difference. Regarding revenues, we sought approval for a 5% increase in general use donations because, while we almost met our target last year, we need to recognize that costs keep rising. What does 5% increase look like:

Annual giving 5% increase monthly impact

Annual giving (current)	5% increase per month (rounded)	Overall annual giving
\$500	\$2	\$525
\$1000	\$4	\$1,050
\$2500	\$10	\$2,625
\$5000	\$20	\$5,250
\$10000	\$42	\$10,500

With inflation impacting salaries, building costs etc, in order to continue to meet these expenses, we need the financial support of our members.

We are always looking for ways to be more efficient in how we operate ( eg sending out Geoff's letter and tax receipts mostly by email instead of mailing them). As well, we were successful in growing our rental income which has been and continues to be a priority for the parish.

It was gratifying that our fair share commitment to the diocese was reduced to \$10,000.

We are dedicating some of the surplus funds from last year to complete the capital projects which were not finalized last year. The bottom line is that we have forecasted a \$9,113 deficit but we are hopeful we can realize a surplus by the end of the year.

I would like to share with you a breakdown of donations by age range and amount we received last year from parishioners and others. These amounts include gifts in kind made to the auction.

Age range & number of members	Total given	Average annual-gift
0-39/6	\$3,568.52	\$594.72
40-49/9	\$13,701.00	\$1,522.23
50-59/12	\$23,866.14	\$1,591.08
60-69/15	\$51,841.25	\$3,456.08
70-79/55	\$158,689.64	\$2,888.27
80 and over	\$142,822.91	\$2,975.48
Unknown/173	\$124,706.46	\$720.85

Thank you all for your generosity and helping St Matthew's thrive.

## DIRECTOR OF MUSIC NEWS

VIRGINIA LINDSAY

Since February, 2025, following the resignation of Dr. Robert Hall, St. Matthew's has been blessed to have Barbara Hallam-Price as our interim Director of Music. The parish is truly grateful for the musicianship, leadership, wisdom and experience that Barb has brought to worship at St. Matthew's and we are delighted that she has agreed to stay with us until June. Thank you, Barb!



In March, 2025, I agreed to a request from the Corporation to chair a Search Committee with the mandate of finding a new, **Owen Spicer** permanent Director of Music. Other Committee members were the Rev. Geoff Chapman, Janice Messam from the Corporation, Frances Berkman and Robert Coleman from the choir and Barb Hallam-Price as an ex-officio member. Our first task was to update the job description to reflect the current and future needs of the music ministry. The position was then advertised on the websites of the Royal College of Church Organists and St. Matthew's.

After reviewing many applications during the past year, and interviewing several candidates, the Search Committee recommended that the Corporation make an offer to Owen Spicer. We are pleased that he has accepted and agreed to take up the position in late June 2026. Owen Spicer is an organist and accompanist based in Montreal, Quebec. An Associate of the Royal Canadian College

of Organists, Owen has won numerous awards and scholarships, including the Godfrey Hewitt Scholarship, the Paul Westermeyer Hymn Playing Award and The Donald and Helen Mackey Memorial Award. In 2024, Owen was awarded First Prize in the Osbourne Organ Competition run by the Summer Institute of Church Music.

Owen has held positions as Assistant Organist at Christ Church Cathedral, Ottawa, Organist at Montreal West United Church and Organ Scholar at Christ Church Cathedral Montreal, First St. Andrew's United Church London, Ontario, and St. Martin's in the Fields, London, Ontario.

As a recitalist, he has performed at many venues in Quebec and Ontario, including Redpath Hall, Montreal, St. Andrew's Church Ottawa and St. James' Cathedral, Toronto. Owen has appeared alongside numerous instrumental and choral ensembles around Canada, such as the Caelis Ensemble in Ottawa and the Stratford Symphony Orchestra. Owen is a graduate of McGill University with a bachelor's degree in organ performance. While at McGill, he studied organ with Hans-Ola Ericsson and Jonathan Oldengarm and Choral Conducting with Jean Sébastien Vallée. He completed a Master's degree at McGill University in the studio of Isabelle Demers. Owen is looking forward to joining the St. Matthew's Ministry team as Director of Music!



*St. Matthew's Choir—Nine Lessons and Chorals 2025*

# COMMUNITY AT ST. MATTHEW'S VIRGINIA LINDSAY

The Community Committee continues to offer opportunities for the congregation to strengthen their social ties and to support one another. On December 14, parishioners of all ages gathered to enjoy a hot lunch at the annual St. Nicholas party. Also in December, a dedicated team baked cookies which were then packed into more than 30 festive tins and delivered to those who can no longer join us in person for Sunday services. This “cookie ministry” continues to be appreciated by recipients and their families.

the Side Persons and Greeters proved to be such excellent hosts in February. We have a detailed manual available to any group that would like to commit to organizing a Souper Sunday and are pleased that the Counters have agreed to host us on April 26. We thank parishioners who continue to generously donate their time and skill making wonderful soups and helping to set up, serve and clean-up when needed.



**St. Nicholas Party**

Evensong services in February and March were followed by receptions, giving attendees the opportunity to reflect on the beauty of this special form of Anglican worship.

On Shrove Tuesday, February 17, the hall with festively decorated tables welcomed close to 120 guests for pancakes, sausages, fruit and real maple syrup. A dedicated team of cooks and servers ensured that all were well fed and happy at this popular event.

Family Service Sundays in January and February were also well attended, followed by popular Souper Sundays where people enjoyed a wide variety of delicious soups while sharing fellowship. The Community Committee is encouraging different parish groups and committees to take turns sponsoring a Souper Sunday and we were delighted when



**Family Service**



**Gen XYZ Pub Night**

# CROKINOLE AT ST. MATTHEW'S

HEATHER SHEEHY AND DENIS MARTEL

St. Matthew's parishioners, families and friends gathered on March 7, 2026 for this year's Crokinole tournament. After four years at St. Matthew's, the Crokinole game still brought friendship and fierce competition to the parish hall.

People gathered for a potluck meal and then started the tournament with three round-robin matches culminating in a Bournes-Lewis finale. Heather and Norm Lewis established an early lead in the game, maintained it, and were

declared the winners. [Congratulations](#) to Norm and Heather! Thanks to everyone who joined us, brought good food, played, and helped with the set up and clean up.

Fun Fact: the oldest-known crokinole board originated from Perth County and is now on display in Kitchener, Ontario.



# THE MARMALADE PROJECT 2026

KATHI RACINE



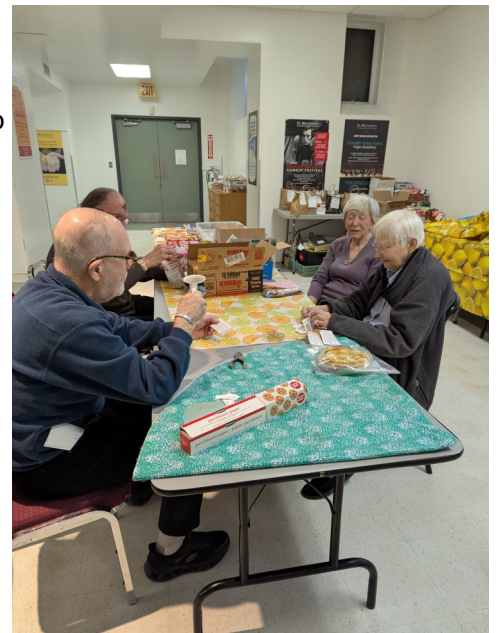
The 2026 Marmalade Project was launched on February 4 after much anxious waiting for the arrival of this year's crop of Seville oranges. Dozens of people contributed many hours of effort to produce over 800 jars of traditional golden orange marmalade, totalling over 120 litres of jam. The oranges were lovely this year and a crew of over two dozen

spent several days preparing the fruit, from washing, juicing, removing those pesky seeds, pulping the oranges and cutting the peels into tiny strips to create an aromatic fruit mixture. After the first boil, we moved on to cooking and bottling the jars of jam. Volunteers, too numerous to even attempt to name, worked hard to produce the final product, from crates of oranges and lemons to delicious, golden marmalade.



This year we were sponsored by Redpath Sugar, which donated the sugar to make all of our marmalade, and we are grateful for their continuing and generous support. David and Marianne Bournes, of Bournes Capital Group Royal LePage donated cases of new jars to the project; thank you both for your assistance. Anonymous donors also donated cases of jars and other equipment to the project, all of which reduced our costs and will allow us to donate a meaningful amount to the Centretown Emergency Food Bank and Alongside Hope, formerly the Primate's World Relief and Development Fund once the marmalade is sold. We expect that the sale of our marmalade will raise almost \$9000 once expenses are met and this is certainly a real benefit from all of our hard work.

Quite apart from the charitable aspect of the Marmalade Project, the unseen benefits include an increased sense of community among parishioners and their friends who came out in numbers to work and socialize. New friendships and skills were built; talent, enthusiasm and laughter were shared. We got to experience the simple joy of creating a tangible product from start to finish with our own hands. It was a pleasure to spend time every day with folks who were dedicated and there to work and learn. Our lunches were a nice break in the day and provided time to socialize and relax, and I got to meet and learn about some remarkable people. I encourage anyone who is interested to consider giving a morning of your time to this project next year; it is a true blessing to be part of the Marmalade Project.



# NATIVITIES OF THE WORLD AT ST. MATTHEW'S

VALERIE NEEDHAM

A year ago, Denis Martel came across the richly illustrated book *Nativities of the World* by Susan Topp Weber which inspired him to mount the display of crèches that graced the north transept during the four Sundays of Advent and Christmas. The idea behind this project was to engage children by crafting prayers, involve parishioners by providing opportunities to pray and offering something unique that would pique the interest of community members who visited our church.

And so began the adventure of finding and purchasing crèches for the exhibit. Word spread and people lent their own nativities as well. The result was a simply wonderful glimpse of how people from all around the world

celebrate the Christmas story in art, stamps and icons.

Thank you, Denis, for enriching our Christmas season with this joyful array of lovely objects. Young and old-but young-at-heart were educated and uplifted by their beauty.



*Olivewood crèche from Nazareth (displayed in the Chapel), gifted to St. Matthew's by the Calder family in remembrance of the life and ministry of The Reverend Canon Keith Calder.*



*Olivewood crèche purchased in Bethlehem for St. Matthew's by The Very Reverend Canon Richard Sewell, Dean of St. George's College in Jerusalem. Please go to <https://www.youtube.com/watch?v=VRvT00wbQvA> to view Dean Sewell's message to St. Matthew's.*

*Continued on page 10*



Felt crèche from Uzbekistan, loaned by Anita Biguzs and Charles Nixon



The stained-glass window in the St. Matthew's Chapel depicting the Nativity. At the top, the blue circle is the mandorla signifying the presence of God, pointing to the Christ Child.



A Russian Nativity scene in the style of Matryoshka, nesting dolls.



A Nativity with Bible verses inscribed on each person.



The Holy Family, hand-painted ceramic from Türkiye. This is an ancient art form passed down through generations. Pictured here is the carnation pattern.



Wooden crèche from St. Matthew's Sunday School Godly Play curriculum, carved by Rob Coleman.



Nativity scene from Guatemala by Jose Canil Ramos. The figures are carved from weathered pine, which is allowed to dry over the summer months, and then painted in bright colours. The Three Wisemen bring gifts of a pineapple, a watermelon and a chicken. The tradition of nativity scenes in Guatemala began in 1649 when Holy Brother Pedro den Betancourt brought back a crèche from Tenerife.

## NATIVITY ICON EXPLAINED

The inserted image is a nativity icon of the Eastern Orthodox Church, which is full of beautiful symbolism. Something to bear in mind is that icons are images of reality – they show us how the world exists through symbol. They are not still life portraits. While they depict historical events, they frequently emphasize theology over literalness.

**Centre:** In the center is the infant Christ lying in a manger. The Virgin Mary is beside Him, and an ox and an ass are behind Him. Christ being born in a cave is not in the Bible, but it is an ancient tradition, dating back to the first and second centuries. He is dressed in burial clothes to foreshadow His death. His location in a cave also foreshadows the grave in which He would be buried and where He would resurrect.

**Lower Left:** Unlike most icons that feature both Christ and the Virgin Mary, she is not looking at Him. Instead, she is looking at her betrothed, Joseph, interceding for him. Tradition tells us that after the birth of Jesus, he walked out of the cave, battling doubts. The old man next to him represents the devil who is, of course, filling his mind with all sorts of doubts and angry thoughts.

We may sing “*What Child is This?*” but Joseph’s question was “*Whose child is this?!*” since he knew he was certainly not the father. Yet Joseph has a halo, which indicates his sanctity.

**Top and Middle:** At the very top is a blue shape sometimes called a *mandorla*. It signifies the presence and the glory of God. It beams from the heavens, pointing to the Christ child, which shows His descent from heaven to the earth.

On the left, the three magi are traveling from afar, following the star in the sky. On the right, angels appear in the heavens above and tell the good news to the shepherds in the field so that they can go and see this divine child born in the little town of Bethlehem.

**Lower Right:** The women at the bottom right are midwives who display that the Son of God was truly born a human and did not merely appear to be human as some early heretics claimed. There is a fountain that they are about to wash the Christ child in because He had, in some sense, an ordinary, messy birth.

Source: <https://www.orthodoxroad.com/nativity-icon-explained/>



# CREATION MATTERS AIDING FIRST NATION COMMUNITIES

BILL NUTTLE

The Creation Matters group strives to become better stewards of God's creation. Started in January 2022, we meet regularly to gather information and share ideas about how we can live more sustainably. We also work with other groups on the certification of St. Matthew's as a green church by the Faith and the Common Good organization.

In our first year, the Creation Matters group adopted the "Restoring God's Earth" guide developed by the Zero Waste Church organization. This curriculum challenged us to take action that would aid women in First Nations communities who are disproportionately affected by environmental degradation. Initially, our efforts were directed toward providing a water filter for St. Thomas' Anglican Church in Moose Factory, Ontario. We raised funds through directed donations and the sale of the book, Jess: Eco-cat, a very popular item in the online auction in 2022. Over \$650 was raised; however, the planned project with St. Thomas' did not pan out.

Considering other options, we settled on Water First to receive the funds we had raised, because their work aligns well with our initial motivation. The Water First organization helps First Nations communities better manage their water resources. They do this by training residents of these communities in how to run the community's water treatment plants and how to protect the quality of water in rivers, lakes, and streams that these communities rely on for water supply, recreation and fishing.

First Water also offers an educational program on water for use by schools.

It is our intent to continue to support Water First through fundraising by the Creation Matters group, such as the sale of our popular crabapple jelly. This offers a couple of benefits to St. Matthew's. First, this expands our outreach efforts to help meet the needs of communities outside of St. Matthew's. Second, this contributes to attaining green church certification in that we are required to educate ourselves about environmental issues that affect First Nations communities. Finally, this engages us further in the process of reconciliation by increasing awareness of the challenges that face First Nations communities and taking action.

As patrons of Water First, we receive occasional updates on the work they are doing in First Nations communities throughout Canada. This information is shared through the regular communications within the Creation Matters group. All are welcome to join us.

For more information on Water First, visit their website:

[Water Charity: Working in partnership for clean water | Water First](#)

## CREATION MATTERS — PLANT SHARING

MARG TERRETT

On May 31<sup>st</sup> at the 10:30 service, Creation Matters will host a Plant Sharing Ceremony similar to the Book Sharing Ceremony we had before Christmas. This is a tradition that is part of the Native Canadian way of life.

For our Sharing Ceremony, we are asking parishioners to bring plants they would like to share with others. They can be outdoor or indoor plants. They need to be potted or placed in containers so it is easy for people to take them home. The surplus plants will be placed on the lawn on

First Avenue with a sign explaining the ceremony and encouraging our neighbours to participate in this community building tradition.

Start thinking about what plants you would like to share with others. There will be more information as we get closer to the date.

# GREAT GLEBE GARAGE SALE

TOM MARTIN



Spring is in the air. In my house its not only time to start gardening but a good opportunity to clean out the house and declutter. It is also time for one of St Matthew’s major fundraisers – the Great Glebe Garage Sale. **This year will be the 40<sup>th</sup> anniversary of the GGGs.** Mark on your calendar Saturday May 23! 10% of gross sales will be donated to The Ottawa Food bank. Despite the rain last year, we had a very successful and fun day. We are hoping for a beautiful sunny spring day this year. Join in the fun with your fellow parishioners at this wonderful community event. We need your help to make this year another success story. There will be a special “Fill a Bag” for \$10 area and there are bound to be great bargains especially for early shoppers!

## WE NEED YOUR STUFF!!

We need your donations. Here is a tasting of the items that sell well:

Jewelry, Silver, Fine China	Books	Linens
Artworks - Paintings	Vinyl Records, DVDs , CDs	Kitchenware
Ceramics	Gardening items	Small Furniture
Watches, Cameras	Games and Toys	Small appliances

This year we would also like to specialize in certain categories for the Yard Sale (Glebe Avenue lawn). These include:

**Sports Equipment** – bicycles, golf clubs, downhill and cross-country ski equipment, skates, baseball equipment, camping equipment, gym equipment

**Lawn Furniture** – patio chairs/furniture and tables, umbrellas, (NO BBQs)

**Small Appliances** – In very good working condition including blenders, mixers, microwaves, vacuums, and coffee makers.

**Small Furniture** – lamps, shelves, end tables, coffee tables, small chairs, plant stands, chests, mirrors, dining table and chairs (No filing cabinets, No Sofas or large Chairs, No beds)

**Electronics** – radios, turntables, speakers, cameras (No TVs, No Computers, No Phones, No Outdated Stuff)

**Start dropping off items at the church basement corridor April 13<sup>th</sup>**

## WE NEED YOUR HELP!

There are many ways to help. We have plenty of things to do to prepare for the big day as well as selling the wares. It is fun!

Once we get all the donations we will need to sort, clean and price them. Then we need to set everything up the day of the sale and sell it all. We will train you, dress you in a team shirt and most of all, we will feed you.

There will be a sign-up sheet at the back of the church or let Tom Martin know ([tom.martin26266@outlook.com](mailto:tom.martin26266@outlook.com)) if you have any time before or on the date of the sale.



# OUTREACH NEWS

JULIA LIPINSKA

## Initial Outreach committee activities

A new Outreach year begins! I am pleased to take on the role of Outreach Chair. I am already making contact and connections with the organizations of [Belong Ottawa](#) (St. Luke's Table, The Well and Centre 454), a ministry of the Diocese of Ottawa. Our parish has a history of supporting these vital ministries through donations. Some members of our St. Matthew's family are already volunteers. I want to determine how we as a parish can strengthen and deepen our connections with these organizations. St. Luke's Table will be giving a Chapel Chat Sunday April 26, and I hope to coordinate similar Chapel Chats with other Belong Ottawa ministries. Please plan to attend these sessions!

Also, keep your eyes out in the near future for an e-survey regarding Outreach. I am interested in your feedback on current activities, as well as what interests *you* in terms of outreach. There are lots of directions we can go with outreach, but there must be interest and person-power. I seek your input! Parents, I will be very eager to hear your ideas as to how we can involve children of all ages in outreach activities – and share your children's ideas too. Please complete the survey when it lands in your inbox.

Of course, no outreach can take place without volunteers. Our outreach efforts as a parish will only be limited by the energy available to put into activities. I hope we can create a core group of individuals interested in outreach organization and action. And on a larger scale, I am hoping we can create, find and participate in outreach opportunities that are truly meeting needs, are meaningful and community-building for everyone involved.

Are you interested in being involved in Outreach? Have thoughts and ideas? Please don't hesitate to get in touch, or chat with me after services. I am all ears!! Contact me at: [lipinskaj@rocketmail.com](mailto:lipinskaj@rocketmail.com) or 613-565-6017.

St. Matthew's has a long tradition of outreach, and I look forward to working with you to continue and strengthen our commitment to loving and helping our neighbours through service.

## Outreach activity (December 2025 to March 2026)

### **Harmony House activities**

Once again members of the St. Matthew's family gave

generously to ensure those living at Harmony House were remembered with love and support at Christmas through the Jesse Tree. Ashley Thorvaldson co-ordinated the effort and dropped off a very full car of gifts and Julia Lipinska took on several tasks to ensure this annual tradition rolled out smoothly. Gift requests for women and children started disappearing from the Jesse Tree before they were finished being put on! Thank you to everyone who contributed a thoughtful gift. Additionally, thanks to Ashley for delivering Amica gift boxes to Harmony House.



*Jesse Tree cards—2025*

### **Winter supplies for St. Luke's Table**

Already well into winter, the call was put out to collect hats, mittens and gloves for Belong Ottawa's [St. Luke's Table](#). Over three weeks, parishioners donated 27 pairs of mittens and gloves, 38 toques, 4 scarves, one set of earmuffs and several pairs of warm socks. The collection box at the back of the church had to be emptied more than once, a great sign of the parish's generosity! A shout out to Dale McKenzie who knitted several pairs of these mittens and toques!

The warm winter donations were delivered to St. Luke's in the week before Christmas. Staff commented on how cold the winter had already been, and that they had run out of these vital supplies to give to those who needed them. As a result, socks were being given out to help people keep their hands warm. Staff were very appreciative of the kindness and generosity of St. Matthew's.

Outreach News - Continued from page 14

**Menstrual supplies for The Well**

All of us know the cost of living has risen disproportionately since the onset of the COVID pandemic. This includes menstrual products. Menstrual products are a necessity, not a luxury, for women of reproductive age. Being unable to afford menstrual products is a part of the UN Women’s definition of “period poverty.”\*

Knowing this, and to celebrate International Women’s Day on March 8, St. Matthew’s held a two-week menstrual products collection drive. Our St. Matthew’s family once again was very generous with their donations of pads, tampons, and wipes. Wipes can be important for a woman’s period hygiene and feelings of self-confidence, in particular when access to washroom and toilet facilities may be limited.

The donations were delivered to Belong Ottawa’s [The Well](#). Everything was received with thanks. As with St. Luke’s Table, we hope this coming year to work more closely with them in our outreach mission. Look for more info to come!

\*“Period poverty refers to the inability to afford and access menstrual products, sanitation and hygiene facilities and education and awareness to manage menstrual

health.” Source: UN Women. (2025, July 28). *Period Poverty – why millions of girls and women cannot afford their periods.* <https://www.unwomen.org/en/articles/explainer/period-poverty-why-millions-of-girls-and-women-cannot-afford-their-periods>

**Centretown Community Food Centre**

The increased cost of living results in some of our neighbours having to make difficult choices between purchasing food or other necessities. Can you help? During our Lenten food drive, we ask that you donate needed foodstuff at the back of the church, or money (refer to the bulletin for details on how), to the [Centretown Community Food Centre](#) (CCFC). Formerly known as the Centretown Emergency Food Centre, the CCFC is an organization of the Centretown Churches Social Action Committee (CCSAC) of which St. Matthew’s is a member. While it is ‘satisfying,’ somehow, to put a physical food donation in the basket, please consider making a monetary donation instead as it allows CCFC to purchase what is most needed, and more of it through wholesale purchasing. Thank you for your continued generosity! Please contact Pam Mackenzie with any questions.



# HARMONY HOUSE CELEBRATES 40 YEARS

ASHLEY THORVALDSON

On March 2, early on a chilly morning, members of St Matthew's congregation gathered with hundreds of supporters of the Harmony House women's shelter for breakfast to mark an important milestone. Forty years ago, in 1986, driven by the need to do something for women fleeing domestic abuse, members of St Matthew's congregation led by Verna Wilson, Ellen Beall and others in the parish with encouragement from the Reverend Canon Keith Calder, established Harmony House. Ottawa's only 'second stage' transitional shelter, Harmony House is a supportive residence operating in the space between emergency shelter services and independent living.

Lorena Caputo, current chair of the Board of Directors, felt the church played such an important role in Harmony House's story, that she wanted to recognize that legacy as the shelter marked this milestone and looked ahead to the next chapter. Seated at the St Matthew's table in a place of pride were: Nancy Averill, Pamela Bolick, Dawn Gregory, Liz Anne Gillham-Eisen, Jane Oulton, Janice Sonnen, Marg Terrett, Ashley Thorvaldson, and Dale McKenzie, representing the many decades of service to the organization and continued interest in offering support.

Nider, Crossroads Children's Mental Health Centre. Two past residents told compelling stories of resilience with gratitude for Harmony House and the support their children received. They reflected on the benefits of community, counselling, and support to help them re-establish their lives and achieve personal goals including higher education. St Matthew's was recognized as an integral part of the history of the organization and an ongoing contributor to its achievement. Overall, the breakfast raised \$220,000 with a significant matching contribution by John and Pina Sicard.

Harmony House has helped upwards of 3,000 families over the years, and throughout that time St Matthew's has contributed to its ability to do so, including with an annual donation. Forty years on, the women's shelter is still urgently needed; Harmony House has a waiting list of eighty applicants.

The Executive Director of Harmony House, Marilyn Matheson, has expressed an interest in a history of the organization that would include the story of both why and how St. Matthew's established a second-stage shelter for women. Exploring the catalysts for the creation of the organization would include the social, political and legal context pre-1986 for women fleeing intimate partner violence. The exercise of writing the history could share the methods, challenges and learnings as St. Matthew's moved forward toward opening the shelter. If you have records or memories of St Matthew's work with Harmony House and would like to share them, please contact Nancy Averill by email: [ngaverill@gmail.com](mailto:ngaverill@gmail.com).

Upon the passing of St Matthew's congregant, Don Wilson (Verna) in February, his family asked that donations be made in his honor to Perley Health or Harmony House. If you choose to donate directly to Harmony House at this time, please also remember Don and Verna's service to the organization.



The fortieth anniversary breakfast was served by Ottawa's Mayor, Mark Sutcliffe, and city councillors. Held at the Infinity Convention Centre, the program was hosted by Catherine Clark, with a panel discussion with: Kaite Burkholder Harris, Alliance to End Homelessness; Anuradha Dugal, Women's Shelters Canada; and Isabelle Mac-

# OUT OF THE COLD SUPPER

ANITA BIGUZS

Many hands make light work!

Once again St Matt’s helpers came out to support the Out of the Cold Supper program at Southminster United Church on Saturday February 28. A merry band of 18 St. Matt’s volunteers, young and old alike, worked cheerfully over a winter’s afternoon to prepare and serve a hot, home-cooked meal for those in our community who may be less fortunate, particularly these days with the high cost of food.

We started off by setting up tables and place settings and preparing and cooking the main meal which consisted of a tasty pork tenderloin (from scratch), along with mashed potatoes, carrots and peas, salad, capped off with home-made neapolitan ice cream dessert. Before the main meal, we served coffee, tea and juice along with home-made muffins made by St. Matt’s helpers. We served

about 40 guests who were very appreciative of the home-made meal and the friendly conversation and camaraderie of St Matt’s servers. It was a busy afternoon of chopping, mixing, chatting and the cleaning up of lots of dishes and pots.

This would not have been possible without the generosity of the many St Matt’s volunteers who came out. As much as this initiative is a vital support to members of our community, it also provides a reminder of our many blessings and of how enriching it is to come together as a team to help others.

I wish to extend my most sincere gratitude and thanks to each of you who gave of your time and generosity to be part of this.



# ST. MATTHEW’S CELEBRATES....



Congratulations to Andrew, Michael and Benjamin Bolick on their baptism on December 14, 2025.

## ST. MATTHEW'S REMEMBERS



### Donald Wallis Wilson

Donald Wilson passed away peacefully on January 19, 2026 at the age of 88. He was the loving husband of Verna for 66 years, brother to Ken and father of Judy, Ian, Jeff and Paul, Uncle of Colin, cherished grandfather of Veronica, Carolyn, Keira, Connor, Teagan and Gillian and beloved great-grandfather of Georgie, Theo, Tamsin, Siobhan, Emlyn, Dave and Ewan.

Don was active on the Finance Committee, advocating strongly for greater efficiencies including the introduction of the PAR system of giving; and in major fund-raising initiatives over many decades.

A memorial service was held for Don at St. Matthew's on February 19, 2026. To view Don's obituary, please visit: [Donald Wallis WILSON Obituary | Ottawa Citizen Remembering](#)

### The Reverend Carol Ann Lascola Canton

1938—2026



Carol Canton passed away peacefully on February 18, 2026. She is survived by her two children Lisette and Sean and two grandchildren, Brenden (Courtenay) and Zachary (Kristen).

Carol was an assistant priest at several churches in Quebec, and at St. Paul's Anglican Church in Edmonton, Alberta. She became Rector of St. Matthew's Anglican Church in St. Albert, a position she held until her retirement. Her daughter Lisette is a member of St. Matthew's Ottawa and the founder and artistic director of the Ottawa Bach Choir.

A funeral service was held at St. Matthew's on Saturday March 7, 2026. To view Reverend Canton's obituary, please visit: [The Reverend Carol Ann Lascola Canton Obituary | 1938 - 2026 | Ottawa Citizen Remembering](#)

### James Ian Sneddon

1940 –2026



Ian Sneddon passed away peacefully surrounded by his family on Sunday February 22, 2026. Ian leaves behind his wife Valerie, son Gregor (Amanda) and daughter Jennifer Wakegijig (John) and grandchildren Grace, Connor, William and Eliza.

Ian and his wife Valerie were active volunteers at St. Matthew's during Gregor's tenure as priest of St. Matthew's.

A Celebration of Life will take place on Saturday, April 18th at 3pm at Pinecrest Remembrance Services, 2500 Baseline Road, Ottawa. To view Ian Sneddon's obituary, please visit: [James Ian Sneddon Obituary | 1940 - 2026 | Ottawa Citizen Remembering](#)

# PRAYER MINISTRY

JANICE SONNEN

The Prayer Chain is an informal group of parishioners who pray daily for the needs of members of the parish and others as requested. Prayer requests can be added to those offered during the Prayers of the People on Sunday mornings by writing a name in the prayer notebook in the chapel or in the church at the table near the Glebe entrance. To make a prayer chain request, contact Janice or Rev. Geoff, who share them confidentially with the others in the group. Janice can be contacted at (613) 709-1209, [janice.sonnen@bell.net](mailto:janice.sonnen@bell.net) or through the church office.

As we emerge from a particularly long, difficult winter and dark times into outward signs of increasing light and the journey from Lent through Holy Week into Easter, may we experience God’s renewing hope as God’s spirit joins us in that space, linking our hearts and souls and bringing hope and the promise of the Easter season.

## Two Prayers for Easter

Dear Heavenly Father, today we rejoice and give thanks for the gift of Easter — the victory of Jesus over sin and death. Thank You for the empty tomb that declares life, hope, and new beginnings. Because He lives, we can face each day with courage and joy. Lord, fill our hearts with the power of the resurrection. Help us to live as people of

hope, shining Your light in a world that needs Your love. Renew our faith, deepen our trust, and remind us daily of the incredible grace we have through Christ. Bless our families, our friends, and all those we meet. May the joy of Easter overflow from our lives and touch others with the promise of Your salvation. Help us to walk boldly in Your truth and to never forget the price Jesus paid so that we could be free. We praise You, we love You, and we celebrate the Risen King today and every day. In Jesus’ mighty name, Amen. @LetsPrayerTogetherWithJames

Glorious Risen Lord, we remember how they came up and took hold of your feet and worshipped you on that first Easter. Let us worship you with the joy that we have met you in many places – in the house of prayer, in our homes, in our callings, and our inner being. Now may our worship turn into witness to tell the world that you are alive and that you give new life to all who come to you; who lives and reigns with the Father and the Holy spirit, now and forever. Amen - Donald Hultstrand from Prayers for Christian Holidays.

### Gone From My Sight - Henry Van Dyke

I am standing upon the seashore. A ship, at my side, spreads her white sails to the moving breeze and starts for the blue ocean. She is an object of beauty and strength. I stand and watch her until, at length, she hangs like a speck of white cloud just where the sea and sky come to mingle with each other.

Then, someone at my side says, "There, she is gone."

Gone where?

Gone from my sight. That is all. She is just as large in mast, hull and spar as she was when she left my side. And, she is just as able to bear her load of living freight to

her destined port.

Her diminished size is in me -- not in her.

And, just at the moment when someone says, "There, she is gone," there are other eyes watching her coming, and other voices ready to take up the glad shout, "Here she comes!"

And that is dying...

Source: [Gone From My Sight by Henry Van Dyke - Famous poems, famous poets. - All Poetry](#)

# WHAT JUST HAPPENED TO MY BLUE BIN?

JULIA LIPINSKA

“Confusing.” That’s what I thought when I first heard about the changes to our ‘recycling.’ You too? I looked into it, and this is what I found out.

## Why the change?

As of January 1, 2026 in Ontario, manufacturers are now responsible for the entire lifecycle of their products, which includes collecting empty containers/packaging after consumers have used up the contents. Manufacturers now have provincial ‘target rates’ for recovering these containers and packaging materials. This is accomplished by our putting this material in our collection bins (formerly known as blue and black ‘recycling’ bins). Manufacturers are now to take on the true cost of the products from which they profit by paying for the collection of their products’ packaging, relieving municipalities of this cost (though currently it is partially funded through our provincial taxes). The program is also intended to encourage better eco-friendly and more durable product design, and reduce the amount of plastics going into landfill by finding markets for collected/recycled packaging. There are many concerns about the program including who is really paying for it, the exclusion of multi-unit buildings/schools/institutions/ many businesses from the program, allowing incineration as ‘recycling,’ the existence of a market for these materials, and extended time lines for producers meeting target collection rates.

## How do I use my containers box now (formerly the ‘blue box’):

More items can now go in to what is now called the “containers stream” than previously. New acceptable items include *but are not limited to*\*

**Paper laminate containers:** spiral cans (e.g. frozen puff pastry), ice cream containers, **\*take out coffee cups**/hot and cold beverage cups (no residue, remove lids from cups)\*

**Plastic packaging and containers:** food trays, salad, bakery and egg containers (no residue); \*includes **coffee pods**, empty of grounds\*



**Tubes:** toothpaste tubes, deodorant, hand cream tubes (no residue, lids on)

**Small item plastic packaging:** hand sanitizer bottles, medication bottles, blister packs (no residue, lids on)

**Flexible plastic packaging:** bread, newspapers and flyers bags, paper towel and toilet paper over-wrap, coffee bags, deli pouches, chip bags, bubble wrap, snack wrappers, cereal and cracker liner bags, outer and inner milk bags (free from food and liquid residue)

**Foam packaging:** meat trays, takeout containers, cups, plates, bowls, foam packaging for products (no food residue, no meat tray absorbent pads)

## So, I can just keep consuming as before because now it’s all getting recycled?

No. This is not the case. For various reasons, at this time, much of the plastic material going in our collections bins will go to the landfill as it did previously. The new system is not solving the problem of plastic and waste creation.

What do we do, then, as both consumers and stewards of God’s creation? First, we need to keep in mind that for plastics, this is currently more of a change to how plastics are *collected* in our waste management system than a fantastic new *recycling* system. We are not off the hook as consumers! Secondly, because this is more of a change to how our plastics are collected, it remains important to continue to think of the ‘7 Rs’ beyond ‘recycle’: **Rethink, Refuse, Reduce, Reuse, Repair, Regift, Recycle** to lessen the amount of plastic in our lives. By *rethinking* our use of plastic and *refusing* the easy acceptance of it into our lives and homes we can help *reduce* the amount of plastic items ultimately produced for consumer use. We each play a role. *Reusing* what does come into our lives ensures we are not creating more through continued consumption. *Repairing* and *regifting* prevents items from prematurely going into landfill and helps reduce others’ consumption. The last of the Rs is **recycle**. If you have done the self-reflecting, inventive and thoughtful work of the first 6 Rs, by this point, you will have much less to contribute to the new collection system.

*Continues on page 21*

*Continued from page 20 "What just happened to my blue bin?"*

You can find out more about items now accepted in containers bin at: <https://www.circularmaterials.ca/resident-communities/ottawa/>. Get the mobile app (search for "Circular Materials") where you can search and submit photos to find out if a particular item can go

in your collection box.

\*Source: Holder, Gord. (2025, December 24.). *What's new in blue and black? Recycling changes coming to Ottawa.* Ottawa Citizen. <https://ottawacitizen.com/news/recycling-changes-ottawa>

## ON GUILT AND VIRTUE - *THE NEW YORKER* IAN GUTHRIE

Patriotism is a strange feeling, which brings out spectacular sacrifice and devotion or it can be exploited for dubious purposes. And so it is as Canadians we have been through the patriotism wringer in the last twelve months as we respond to the provocations from the south.

Many Canadians have responded with real sacrifices. If I owned property in Arizona or Florida, it would have been wrenching to forgo part of our winter there as a protest against the insults and economic challenges.

I do not own property south of the border, do not consume that Kentucky product with alcohol content, have never attended a show on Broadway or see that in my future. But I do wish to join with fellow citizens in making sacrificial protest - what can I do?

So, I turn to *The New Yorker* magazine, the annual renewal for which I recently received. I have been a subscriber for many years, it is an expensive item, now part of my identity. I feel a particular identity with several of the contributors, the cartoons are notably clever. I feel pleasure when I find the new issue in my mailbox; it is perhaps the only American artefact in my life; am I to give it up in order to join the Canadian protest?

If I cancelled my subscription, it would allow me to stand with fellow citizens, virtue. However, to cancel will make me feel I am turning my back on the creators of a product of many merits, guilt. Those creators are surely erudite

people of considerable intellectual achievement. Adam Gopnik, an editor, is a Canadian from Montreal, whom I had the good fortune to meet at Carleton several years ago. David Remnick is another editor who also produces *The New Yorker* Radio Hour that I listen to at 5 a.m. most Sundays. How do they manage to produce so much each week? Rebecca Mead is a frequent contributor who I would dearly love to meet.

In its fiction section, *The New Yorker* has published notable Canadian authors, Margaret Atwood and Miriam Toews for example, so cancelling my subscription leaves one less opportunity for our writers.

If I do cancel, I am rejecting or hurting worthy people to make a point. Is this a worthy sacrifice, a virtue, or am I damaging an American product of international merit? Guilt?

Not to keep readers in suspense, I have renewed my subscription to *The New Yorker*, about which I feel some guilt, but also some virtue in that I am supporting individuals of considerable intellectual and cultural achievement.

Am I still a patriotic Canadian?

# THE KING JAMES VERSION OF THE BIBLE

HEATHER LEWIS

The monarch was James I of England (and James VI of Scotland). The year was 1604. The time had finally come for a truly authoritative English translation of the Bible. It had not been an easy route. John Wycliffe, who had initiated an early English translation of the Bible (14<sup>th</sup> C.), and William Tyndale, who had translated and issued the first printed version of the New Testament in English (1526), had both been condemned as heretics.

Miles Coverdale was the translator of the first complete printed English translation of the Bible (1535), based heavily on Tyndale, the Vulgate and Luther's German translation. His version of the psalms was used in the Book of Common Prayer. Finally, some versions were issued under royal license such as Matthew's Bible (1537), the Great Bible (1539), and the popular Geneva Bible (1560). The 16<sup>th</sup> C. had been religiously turbulent in England, and the 17<sup>th</sup> C. would prove to be so too. King James hoped to harmonize some religious tensions by creating an authoritative English Bible. Starting in 1604, he entrusted the work to six committees: three committees translated the Old Testament, two the New Testament, and one the Apocrypha. The three committees translating the Old Testament relied on the authoritative Hebrew and Aramaic text of the Hebrew Bible. The two committees working

on the New Testament focused on the Greek Textus Receptus, including Erasmus's publication of the Greek text. A third committee translated the Apocrypha from the Greek Septuagint as it includes books not found in the Hebrew bible. Notwithstanding the work of the committees with original sources, the final translation drew extensively on William Tyndale's translation and other translations that relied on his.

After the committees had finished their translations, representatives from each group came together to conduct a final review, trying their best to ensure consistency and accuracy before the work went into print.

The first edition of the King James Bible was published in 1611. It was not originally called the King James Version but was referred to with phrases such as "the English Translation made at the beginning of the Reign of King James." Increasingly it came to be known simply as the King James Version or just KJV.

Its influence on the English language, English literature and the liturgy of the Anglican Church cannot be overestimated. It was the standard "go to" English translation of the Bible well into the mid-20<sup>th</sup> C. Still today it remains loved for the felicity of its prose and the vividness of its imagery.



"The Translators Presenting the Bible To James I," George E Kruger. Hulton Archive/Getty Images.

# BREAKING INTO BLOSSOM

THE MOST REVEREND J BARRY CURTIS

Cycling through Ireland on a bicycling holiday with my late wife, I stopped for a much-needed break as we climbed up a hill. (Pat was convinced that all the hills in Ireland only went up, never down!) We sat on the hillside to enjoy a rest and a snack and were soon joined by two horses in an adjacent pasture who came over to check us out. They seemed glad to see us, poking their heads over the wire fence, while we got up and patted their neck and forehead, telling them all the while how handsome, how beautiful they were. (They really were). They smiled from nose to tail as horses do. It was a lovely experience and we hated to leave our new friends as we soon continued to struggle up this hill.

Poet James Wright captured a similar experience he enjoyed one day in Minnesota in his poem entitled "A Blessing"

*Just off the highway to Rochester, Minnesota,  
Twilight bounds softly forth on the grass.  
They have come gladly out of the willows  
To welcome my friend and me.  
We step over the barbed wire into the pasture  
Where they have been grazing all day, alone.  
They bow shyly as wet swans.  
They love each other.  
There is no loneliness like theirs.  
At home once more,  
They begin munching the young tufts of spring in the darkness.  
And nuzzled my left hand  
That is delicate as the skin over a girl's wrist.  
Suddenly I realize  
That if I stepped out of my body I would break  
Into blossom.*

I am in awe at that ending; 'that if I stepped out of my body I would break into blossom'.

What would "breaking into blossom" be like for you? Perhaps it might mean breaking out into joy, wonder, beauty, life, love. Have you ever felt that? ...something so wonderful, so lovely that you want to break out into blossom.

The followers of Jesus wake up every morning and sadly

we can be caught up into a world of fear, anger, war, greed, and that angst can stay deep within us, casting a shadow over our whole day. The followers of Jesus can also wake up every morning, certainly aware of the world, but also profoundly grateful for a new day, new possibilities, new moments of joy and wonder. They can awake to an awareness of God's love, and the beauty of God's world of trees, birds, flowers, rivers, mountains and of loving, kind, generous friends, partners and neighbours. The world described by radio and TV news every day surrounds us, without a doubt, but entering each day aware of these blessings from our gracious God leads us to break out into blossom, into joy, wonder, colour, generosity, life at its richest.

The Irish poet W B Yeats expresses this reality another way. In his poem he describes:

*My fiftieth year had come and gone,  
I sat, a solitary man,  
In a crowded London shop,  
An open book and empty cup  
On the marble table-top.  
While on the shop and street I gazed  
My body of a sudden blazed;  
And twenty minutes more or less  
It seemed, so great my happiness,  
That I was blessed and could bless.*

Christians have a choice about our world; we can either allow it to leave us to despair, anger and fear, or, while acknowledging the reality of the world in which we live, we can seize upon the reality of God's love, his abiding presence and the gift of his creation. That realization can lead us to break into blossom, into joy, colour, beauty and life. Why not consider the possibility of breaking into blossom today. In the midst of your busy life, with the tumultuous world careening around you, take time today to bask in the reality of God's blessings offered to you and break into blossom. What would that look like for you? Today rejoice in the reality that you are blessed and can bless. What would it mean for you to bless....today?

# ST. MATTHEW'S

## The Anglican Church in the Glebe

*St. Matthew's is a vibrant Christian community that welcomes everyone, embraces inspiring worship and learning, and is committed to hospitality and loving service.*

[Worship Services](#)

**Sunday 10:30 a.m.**  
In-person Choral Eucharist  
Streamed on YouTube  
Streamed on Facebook  
**Sunday 8 a.m. and Thursday 10 a.m.**  
In-person Said Eucharist  
**Last Sunday of the Month 10.30 a.m.**  
Family Service  
**First Sunday of the Month**  
Evensong

### Clergy

Incumbent .....The Reverend Geoffrey Chapman  
Honorary Assistants .....The Most Reverend Barry Curtis  
The Reverend Katherine (Katie) Tait

### Leadership and Administration

Rector's Warden .....Janice Messam  
People's Warden .....Kevan Pipe  
Deputy Wardens .....Wendy Pullan  
Frances Berkman  
Parish Administrator .....Catherine James-McGuinty  
Nominating Chair .....Helen Griffin  
Property Co-Chairs .....Bill Nuttle  
Bill Cornfield  
Stewardship Officer .....Janice Sonnen  
Members of Synod .....John McBride  
Matt Gregg  
Simon Creasy  
Janice Messam

### Finance and Accounting

Finance/Stewardship Chair .....Charles Nixon  
Treasurer .....Andrew Bolick  
Fundraising Chair .....Peggy Nankivell  
Counters .....Michael Goddard  
Contributions Coordinator .....Ian Marsh

### Worship and Music

Interim Director of Music .....Barbara Hallam-Price  
Altar Guild .....Elizabeth MacMillan  
Robina Bulleid  
Servers' Guild .....Cathy Simons  
Sidespersons .....Peter Frayne  
Worship Committee .....The Reverend Geoffrey Chapman

### Nurturing and Fellowship

Children and Youth Ministry.....Debora Fleming  
Denis Martel  
Hailey Sowten  
Sarah Keeshan  
Vivian Messam  
Christian Education ..... Helen Griffin  
Community Chair ..... Margaret Terrett  
Coffee Hour .....Jane and Peter Rider  
Prayer Support Team .....Janice Sonnen  
Prayer Chain .....Janice Sonnen  
Pastoral Care .....The Reverend Katherine (Katie) Tait

### Outreach

Outreach Chair .....Julia Lipinska  
CCSAC Centretown Community Food Centre.....Pam Mackenzie  
FACES Refugee Committee .....Tom Martin

*Pulse of the Parish*, the community newsletter of St. Matthew's Anglican Church, is published four times a year. The dates for publication in 2026 are as follows: June 5 (submissions by May 28), September 18 (submissions by September 10) and December 4 (submissions by November 26).

For the June 2026 issue, please forward contributions of up to 600 words and photographs by May 28 to Dawn Gregory at [collinsgregory1@hotmail.com](mailto:collinsgregory1@hotmail.com).

Together, we celebrate all that we do at St. Matthew's to the glory of God and in loving service to our neighbours.



Website: [www.stmatthewsottawa.ca/](http://www.stmatthewsottawa.ca/)  
217 First Avenue, Ottawa, ON, K1S2G5

Office email: [admin@stmatthewsottawa.ca](mailto:admin@stmatthewsottawa.ca)  
Office: 613.234.4024