



# **BASIN TRANSIT SERVICE AND THE KLAMATH TRIBES COORDINATED PLAN**

**Project Advisory Committee Meeting #2  
December 3, 2025**

# AGENDA

- 1 Project Update**
- 2 Draft Tech Memo #1: Existing Services**
- 3 Community Engagement Update**
- 4 Next Steps & Open Discussion**

# PROJECT UPDATE

# PROJECT UPDATE

## Project Tasks

**Task 1:** Project Management

**Task 2:** PAC Meeting #1 (Kick-Off Meeting)

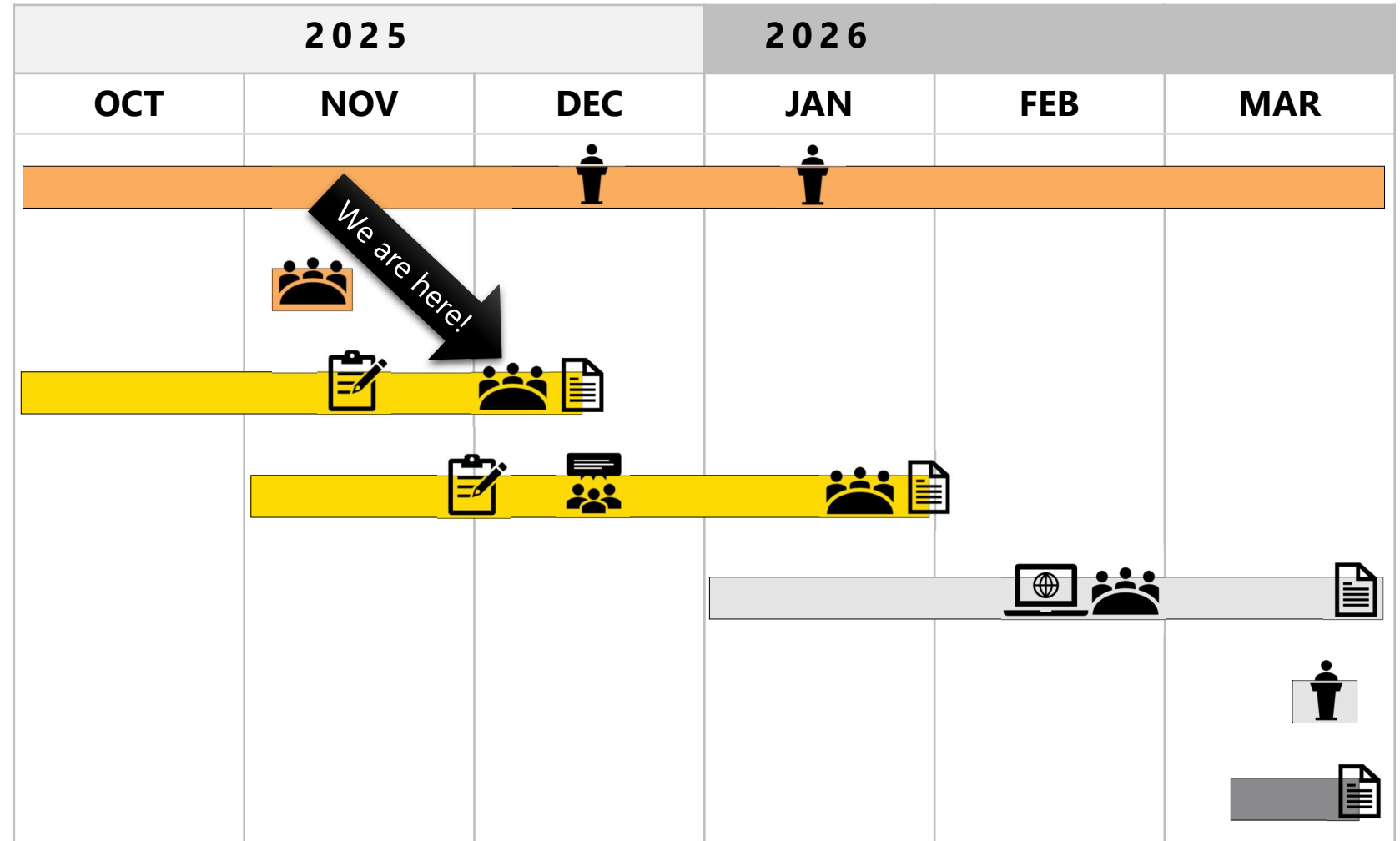
**Task 3:** Existing Services & Stakeholder Engagement Memos

**Task 4:** Needs & Opportunities Memo

**Task 5:** Final Coordinated Plan

**Task 6:** Final Presentation

**Task 7:** Final Deliverables



PAC Meetings



Provider/  
Rider Surveys



Final Deliverables



Virtual Focus Groups



Online Open House



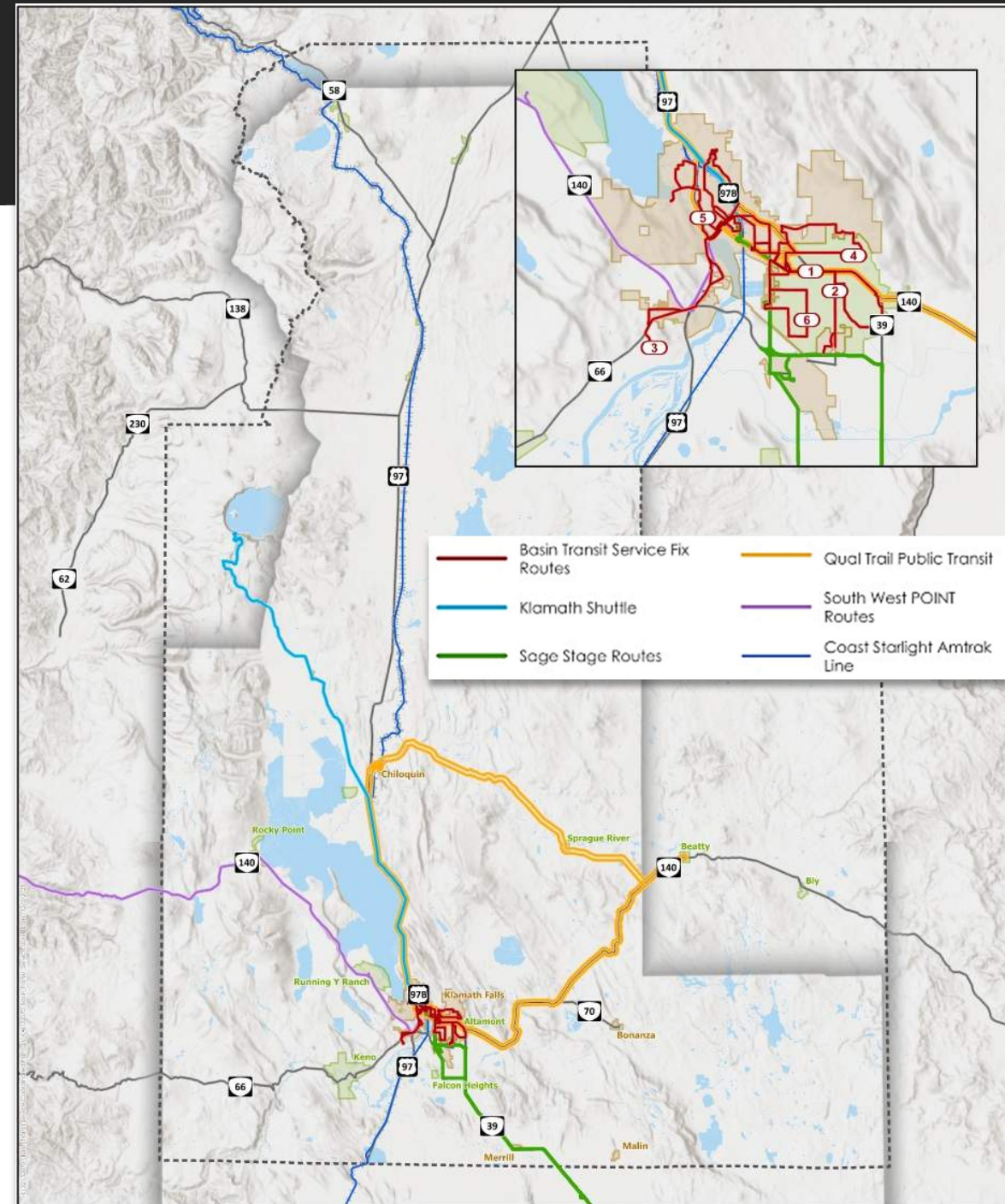
Board Meetings



# **DRAFT TECH MEMO #1: EXISTING SERVICES**

# DRAFT TECH MEMO #1: EXISTING SERVICES

- Study Area: Klamath County
  - Klamath Falls urban growth boundary
  - Rural communities
  - Tribal lands
- Mix of Services
  - Public transit agencies
  - Tribal transit
  - Regional bus lines
  - Human services providers
- Wide Range of Populations
  - Seniors
  - People with disabilities
  - Veterans
  - Low-income residents
  - Tribal members
  - Students/youth



# DRAFT TECH MEMO #1: EXISTING SERVICES

## Overview of Existing Transportation Services

*Information summarized for each provider (if applicable)*



**Service Information**



**Ridership Trends**



**Funding Sources**



**Vehicle Fleet**



# DRAFT TECH MEMO #1: EXISTING SERVICES

## Public Transportation Providers

- Basin Transit Service (BTS)
- Quail Trail Public Transit
- SouthWest POINT: Intercity bus service
- Klamath Shuttle: ADA shuttle to Crater Lake (seasonal)
- Sage Stage: Alturas, CA ↔ Klamath Falls (Thursdays)
- Pacific Crest Bus Lines: Daily route to Redmond, OR
- Amtrak: Coast Starlight train, daily service
- Major transfer hubs: Amtrak Station, Basin Downtown Transit Center, Sherm's Thunderbird, Sky Lakes Medical Center, Altamont Transfer Center
- Shared stops enable interline connections between BTS, Quail Trail, and regional services

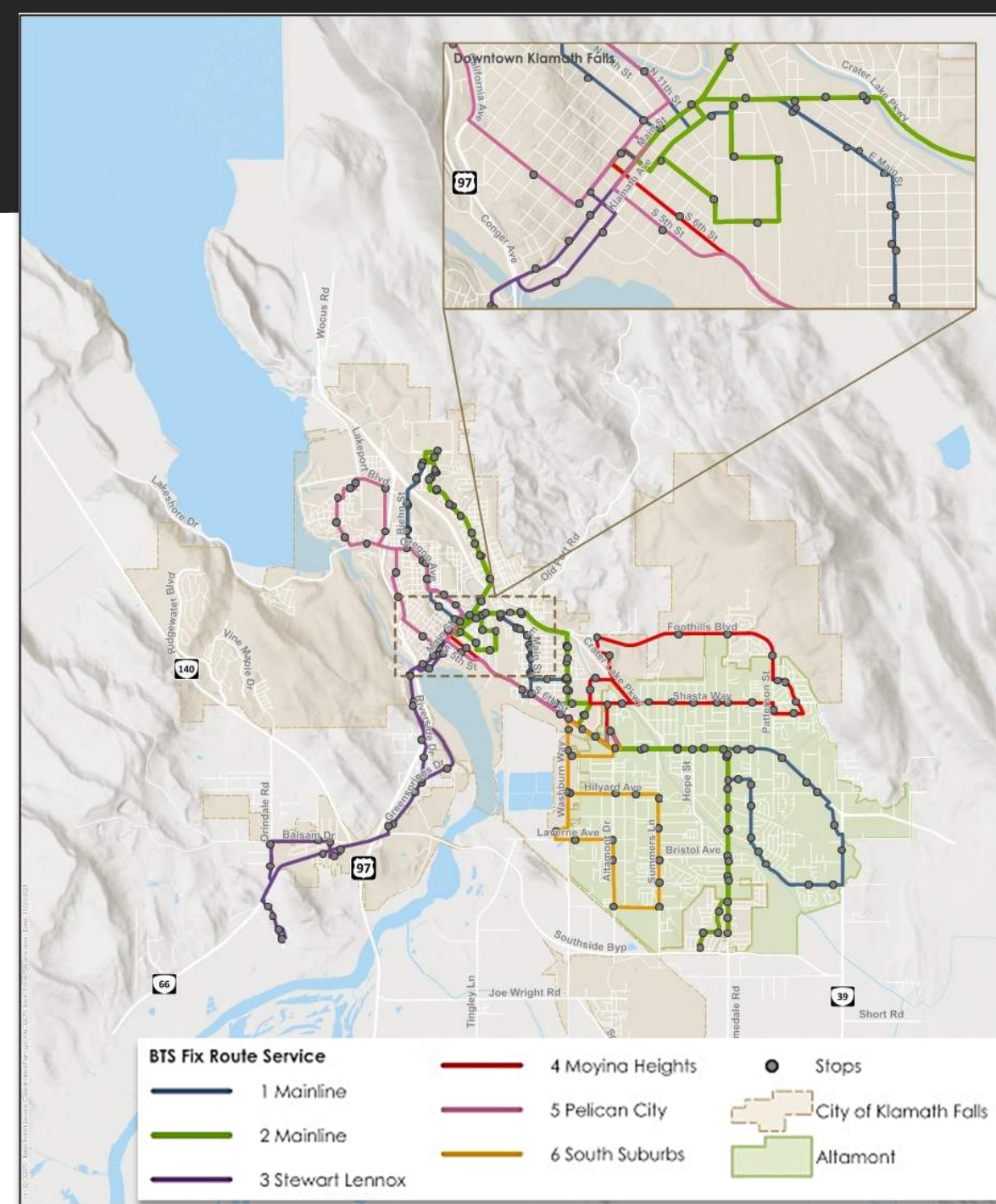




# DRAFT TECH MEMO #1: EXISTING SERVICES

## Basin Transit Service (BTS)

- Fixed-Route & Demand-Response services:
  - Fixed-Route Bus (urban core)
  - Basin Lift (paratransit)
  - Basin Connect (rural communities)
  - Demand Response (Senior Center)
  - Veterans on the Go
- Operate weekdays, 8am–5pm
- 32-vehicle fleet varying in type, capacity, and accessibility



# DRAFT TECH MEMO #1: EXISTING SERVICES

## Basin Transit Service (BTS)

### *Fixed-Route Bus*

- Fare = \$0.75 per one-way trip (reduced fares available)
- Students/youth/Veterans ride free

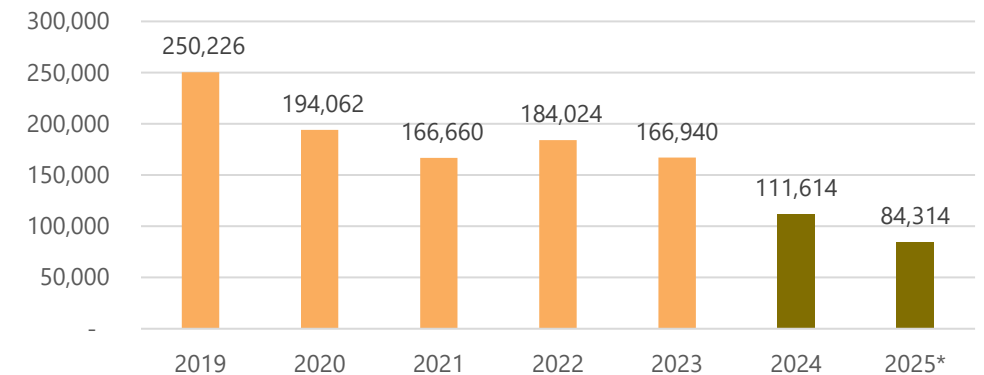
### *Basin Lift (Paratransit)*

- Door-to-door, wheelchair accessible transportation service for people 65+ / with ADA-qualifying disability
- Fare = \$1.50 per one-way trip
- Veterans ride free

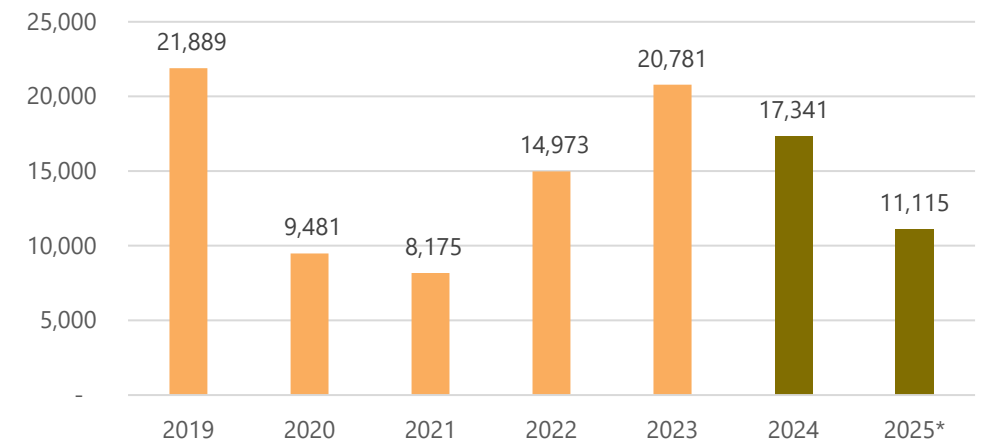
### *Basin Connect*

- Free demand-based intercity service
- Mon/Wed: Keno, Worden, Falcon Heights, Lake of the Woods
- Tues/Thurs: Bly, Beatty, Bonanza, and Merrill

Fixed-Route Annual Ridership (2019-2025\*)



Basin Lift Annual Ridership (2019 - 2025\*)



# DRAFT TECH MEMO #1: EXISTING SERVICES

## Basin Transit Service (BTS)

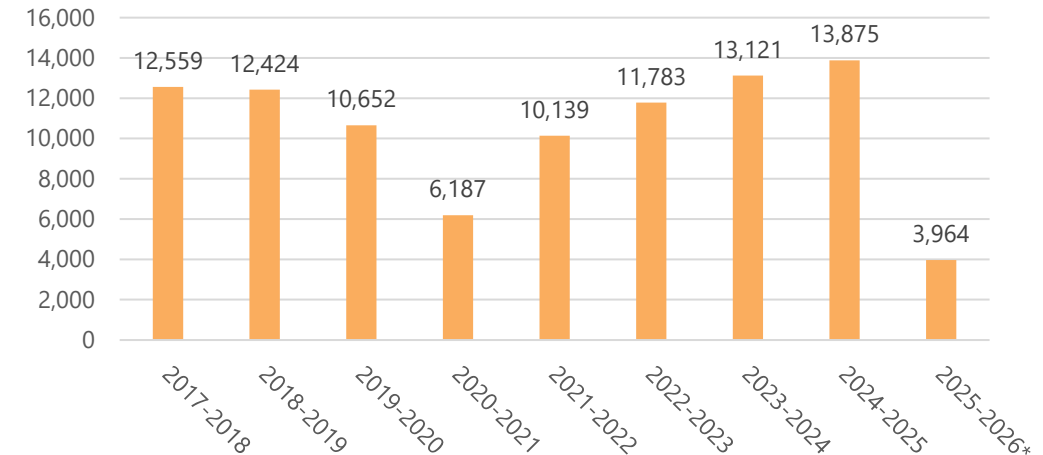
### *Demand Service (Senior Center)*

- Available to seniors, people with disabilities, and general public
- Prioritized by medical appointments, congregate meal sites, employment, grocery shopping, and non-essential travel (last)
- Mon-Thurs: 8:30am–3:30pm; Fri: 8:30am–12:00pm

### *Veterans on the Go*

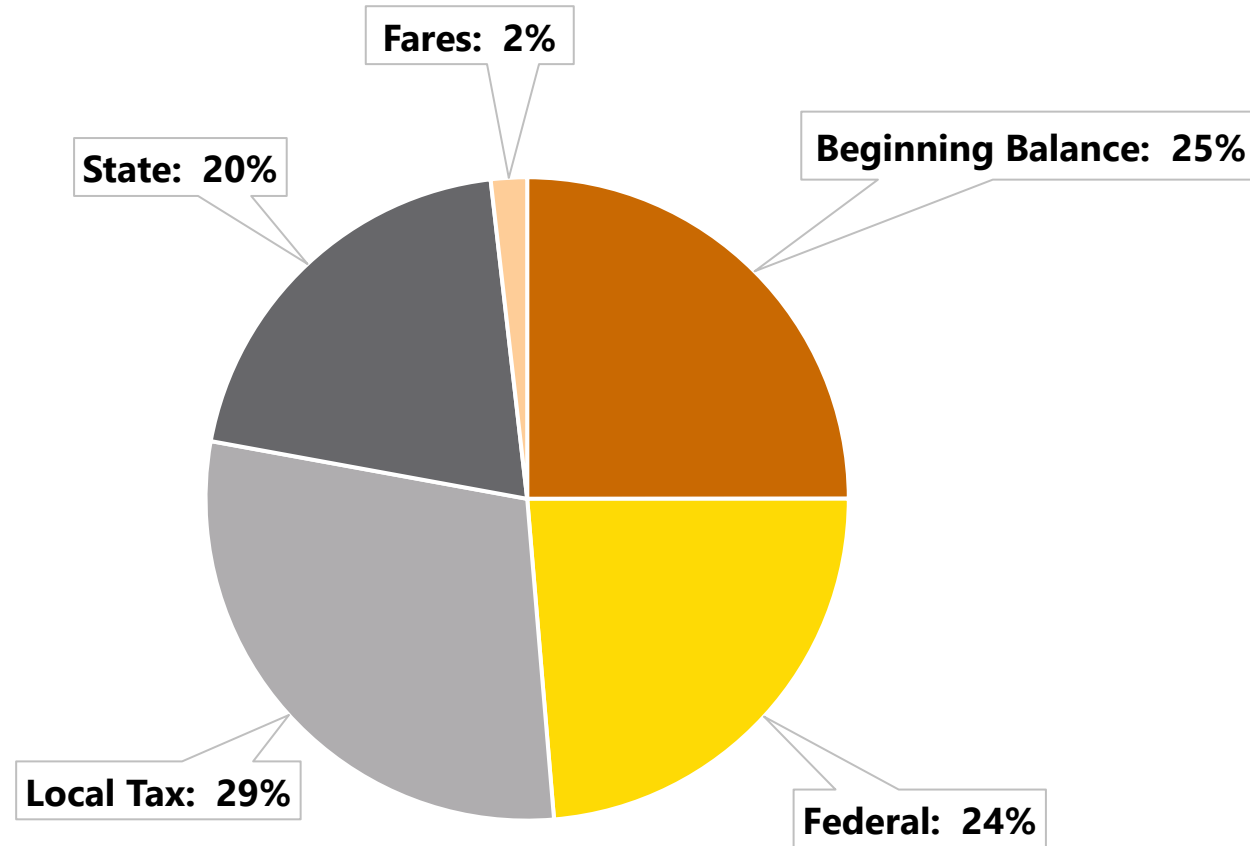
- Klamath County Veterans Card holders ride free (on all services)
- Weekly Medford trip: White City Veterans Affairs Hospital, Social Security office, and medical specialty offices

Demand Service Total Annual Ridership (by Fiscal Year)



# DRAFT TECH MEMO #1: EXISTING SERVICES

## Basin Transit Service (BTS)



Total 2025 Revenue: **\$5,536,830**





# DRAFT TECH MEMO #1: EXISTING SERVICES

## Quail Trail Public Transit

- Fare-free; fixed-route
- Operates 5:55am–6:40pm
  - Mon-Fri: Chiloquin ↔ Klamath Falls 5x per day
  - Thurs: additional service to Sprague River and Beatty
- Serves 800–900 riders per month with various needs
- 14-vehicle fleet of various types (10 ADA-accessible)
- Funded by Federal Transportation Administration (FTA) and STIF



# DRAFT TECH MEMO #1: EXISTING SERVICES

## Human Services Providers

- **Basin Medical Transportation:** provides non-emergency medical transport (NEMT)
- **Klamath Tribal Transport & Health Services:** provides NEMT & transport to cultural events
- **REACH Klamath Falls:** Supports individuals with disabilities
- **Oregon Department of Human Services (ODHS):** provides bus passes, gas vouchers, NEMT via TransLink
- **Veterans Health Administration & Disabled American Veterans:** provides medical transport for veterans
- **Klamath County Developmental Disabilities Services:** Serves individuals with intellectual and developmental disabilities
- **Klamath Basin Behavioral Health:** Transportation coordination for clients

**Please review Tech Memo #1 to confirm information for the organization you represent.**





# **COMMUNITY ENGAGEMENT UPDATE**

# COMMUNITY ENGAGEMENT UPDATE

## Rider Survey

- **Open through Friday, Dec 5**
- Available in **English** and **Spanish**
- 100+ responses to-date (English)



***Keep up to date on  
the Project Website!***

[basintransit.com/human-coordinated-plan](https://basintransit.com/human-coordinated-plan)

## Virtual Focus Groups

- Discuss rider survey results and other transportation service needs
- **Human Services/Health Providers:** Thurs, Dec 11
- **Education Institutions:** Mon, Dec 15
- **Klamath Tribes:** Mon, Dec 15

# **NEXT STEPS & OPEN DISCUSSION**

# NEXT STEPS & OPEN DISCUSSION



**PAC to provide TM #1  
comments by Wednesday,  
December 10**



Project Team to conduct Virtual  
Focus Groups / BTS Board Project  
Update



Project Team to develop  
Draft Tech Memo #2: Needs  
& Opportunities

**PAC Meeting #3 January  
21, 2026 (In-Person)**

**THANK YOU!**