

Johnsonite®

Stairwell Management

ANGLE FIT™ RUBBER TREADS + VINYL TREADS + ACCESSORIES

Improved
solutions
at every
step.

 **Tarkett**

True flooring solutions improve every aspect of the experience, from aesthetics to safety and installation to maintenance. So Tarkett has made significant improvements to the design of its rubber stair treads that will minimize the time and cost of installation. Our new Angle Fit™ angled noses are available on all rubber treads—with or without risers—making every installation faster, easier and safer.

Well-rounded solutions.



STAIR NOSE

New angled stair nose returns to the step, allowing it to overlap the riser and eliminate time-consuming cuts.

NO CAULK

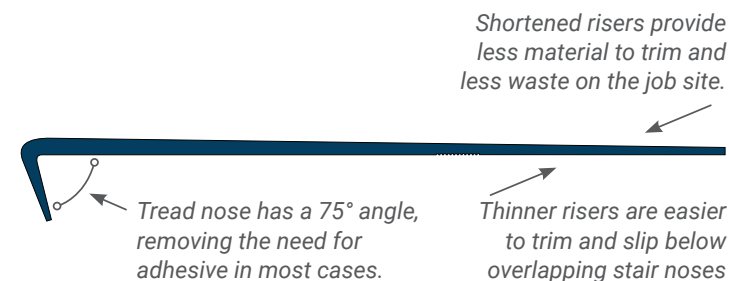
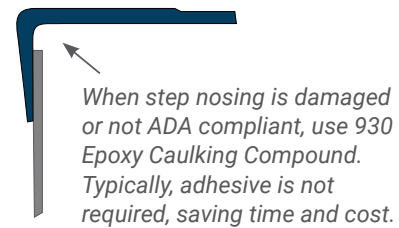
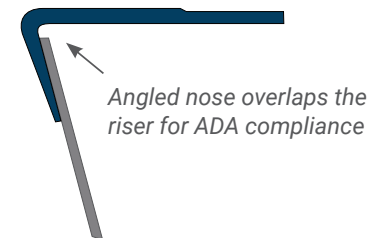
If stairs are in good condition, no nose caulk is required.

EASY RISER

The riser's thickness is reduced at the top, allowing it to slip easily below the stair nose.

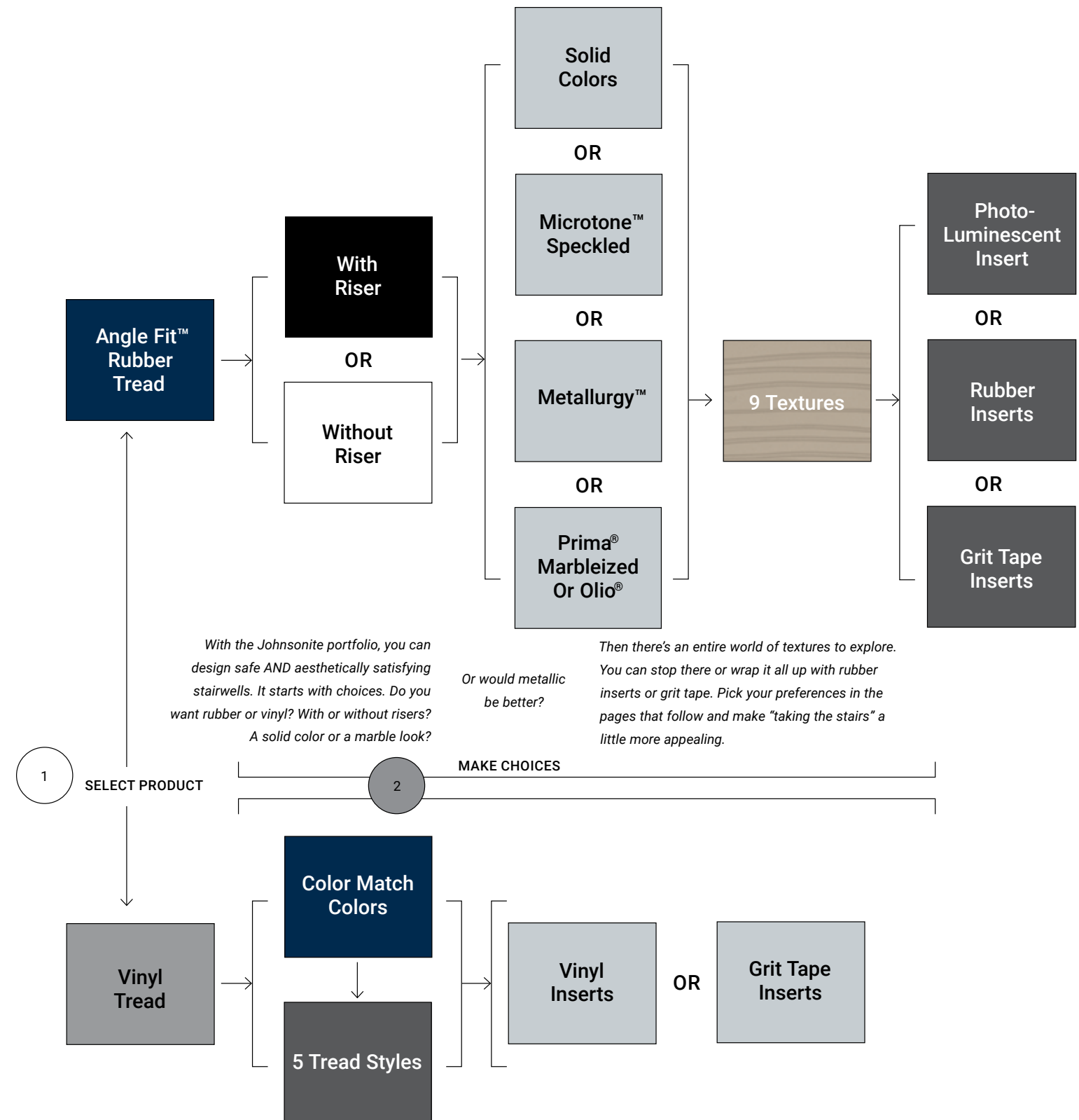
SAFETY

Slip-resistant rubber treads are available in a variety of colors, textures and safety inserts for the visually impaired.



One step at a time

The right stairwell management system improves both the safety and appearance of these critical spaces, helping reduce risk and improve mobility from top to bottom. With thousands of possible combinations, Tarkett's comprehensive stairwell management system provides no shortage of options. Choose between rubber and vinyl constructions to balance the needs of every project.





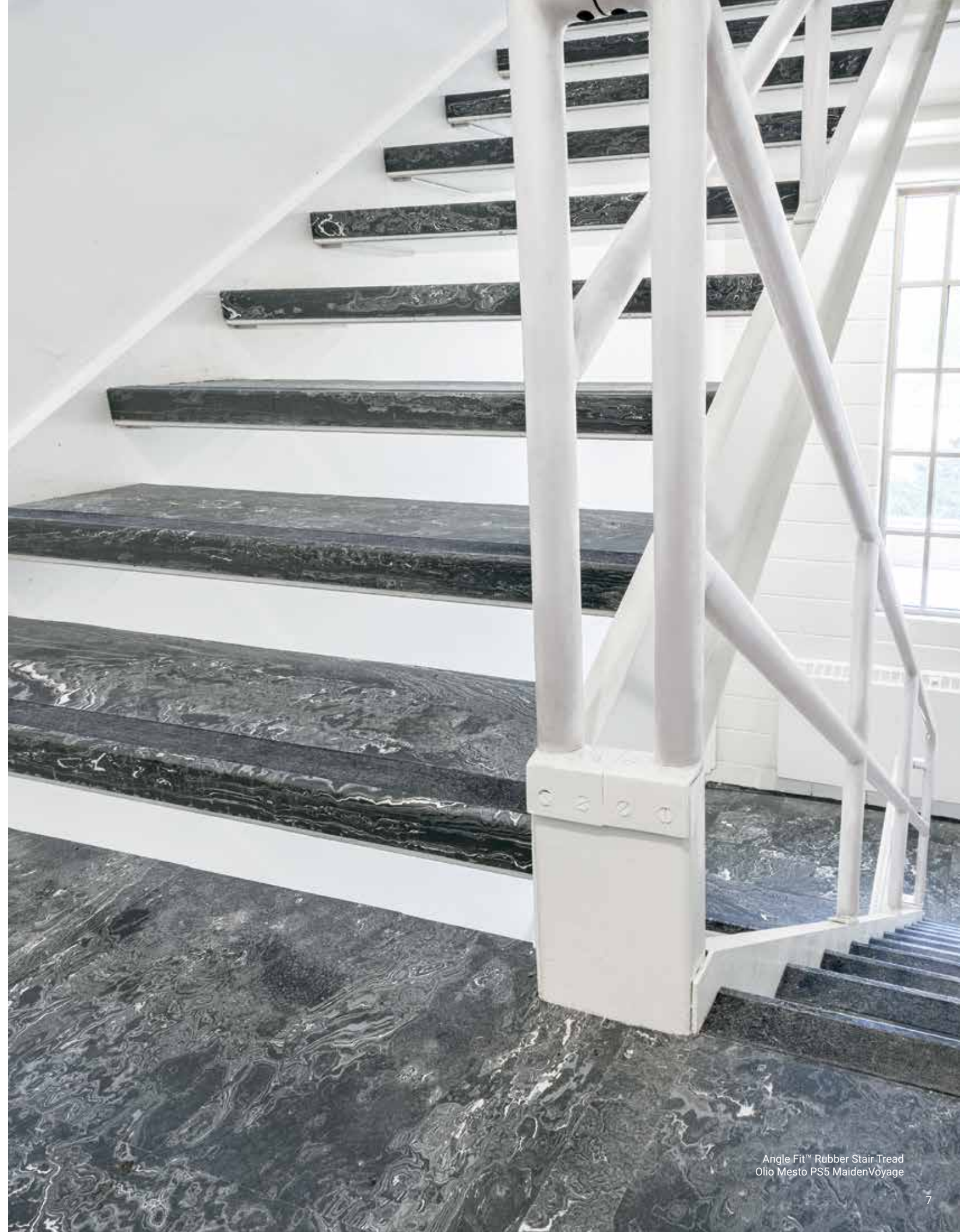


No one covers you better.



At Tarkett, we believe in placing people in the center of every space. So we've developed a portfolio of products designed to work together both functionally and aesthetically, helping you create more productive workspaces that maximize return on investment.

The Tarkett Solution SPECtrum™ helps you expertly recommend a flooring platform for the specific needs of every space and every budget. And our full palette of colors, patterns, and textures is coordinated to work together visually across platforms. So the endless balance of function, safety, and longevity is always done on budget, in style, sustainably. Without compromise.



Angle Fit™ Rubber Stair Tread
Olio Mesto PS5 MaidenVoyage

Doing Good— Together.

At Tarkett North America, we believe that together, we can make a positive impact on people and the planet. That's why we're Doing Good—Together, connecting our sustainability efforts with what our customers value and our world needs. It's an active, living commitment to create a future where people and the planet prosper in balance. Where sustainable flooring solutions don't just perform. They inspire.

Tarkett's Angle Fit™ Rubber Stair Treads are:

- Cradle to Cradle® Bronze certified
- FloorScore® certified and meets CA01350
- Phthalate-free
- Non-PVC
- Part of the ReStart® reclamation program
- Made in the U.S.A. in an ISO 9001 and ISO 14001 certified plant

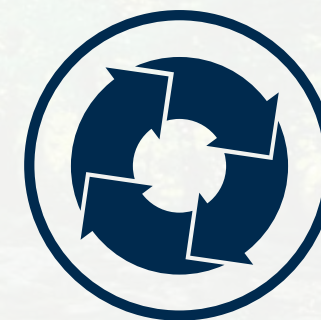
Tarkett's Vinyl Stair Treads are:

- FloorScore® certified and meet CA01350
- Phthalate-free, except for recycled materials
- TVOC ≤ 100 µg/m³
- Part of the ReStart® reclamation program



DESIGNING FOR LIFE

Developing products based on Cradle to Cradle® principles that contribute to people friendly spaces AND respect the planet's natural capital.



CLOSING THE LOOP

Building a circular economy inclusive of programs and business models that encourage take back, reuse, recycling and elimination of waste.



DRIVING COLLABORATION

Inviting others to join us in Doing Good through education, collaboration, transparency and communication.

Angle Fit™ Rubber Stair Treads with Integrated Riser One piece - tread / riser

<p>Rubber Tread with Integrated Riser</p> <p>Raised Round Tread/Riser (RNRDTR)</p> <p>S, B, Z</p>	<p>Rubber Tread with Integrated Riser for the Visually Impaired</p> <p>Raised Round Tread/Riser Visually Impaired (VIRNRDTR)</p> <p>S, B, Z, +</p>
<p>Raised Square Tread/Riser (RNSQTR)</p> <p>S, B, Z</p>	<p>Raised Square Tread/Riser Visually Impaired (VIRNSQTR)</p> <p>S, B, Z, +</p>
<p>Hammered Tread/Riser (HNTR)</p> <p>S, B, M, Z</p>	<p>Hammered Tread/Riser Visually Impaired (VIHNTR)</p> <p>S, B, M, Z, +</p>
<p>Bamboo Tread/Riser (BMNTR)</p> <p>S, B, X</p>	<p>Bamboo Tread/Riser Visually Impaired (VIBMNTR)</p> <p>S, B, X, +</p>
<p>Cubis Tread/Riser (CUBTR)</p> <p>S, B, X, ★</p>	<p>Cubis Tread/Riser Visually Impaired (VICUBTR)</p> <p>S, B, X, ★, +</p>
<p>Fast Lane Tread/Riser (CFLNTR)</p> <p>S, B, X, ★</p>	<p>Fast Lane Tread/Riser Visually Impaired (VICFLNTR)</p> <p>S, B, X, ★, +</p>
<p>Diamond Tread/Riser (CNNTR)</p> <p>S, B, X, ▲</p>	<p>Diamond Tread/Riser Visually Impaired (VICNNTR)</p> <p>S, B, X, ▲, +</p> <p style="color: #E67E22;">One piece Diamond tread N/A in round nose</p>
<p>Rice Paper Tread/Riser (FRPANTR)</p> <p>S, B, X, ▲</p>	<p>Rice Paper Tread/Riser Visually Impaired (VIFRPANTR)</p> <p>S, B, X, ▲, +</p>

Angle Fit Rubber Stair Treads

Visually Impaired Color Solutions +

Grit Tape Color

- Black
- Brown
- Grey
- Tan
- Yellow
- White

Solid Color Rubber Insert

- 40 Black
- 47 Brown
- 49 Beige
- 55 Silver Grey
- 85 Burgundy

Black: Grit tape contrasts with colors 01, 12, 21, 24, 27, 28, 29, 31, 32, 38, 41, 48, 55, 58, 59, 62, 71, 84, 106, 121, 129, 150, 151, 163, 190, 192, 280, 281, 282, 293, AGM, BRL, BRM, CGL, CGM, CPM, WGL, WGM, LA2, LA3, LA5, LA6, LA8, LB4, LB6, LC8, LC1, LC2, LC3, LC4, LC5, LC6, LC7, LD1, LD2, LD4, LD5, LD7, LE1, LE3, LE7, LF2, LF6, LF8, LF9, LG1, LG3, LG8, LH3, LH7, LJ1, LJ2, LJ3, LJ5, LJ7, LJ8, LJ9, LK1, TB6, TG2, TG3, TG5, TG6, TG7, TG8, TH1

Brown: 09, 11, 22, 33, 34, 42, 45, 49, 68, 80, 130, 469, LA1, LA9, LB2, LB3, LC9, LD8, LD9, LE2, LE4, LE5, LE8, LE9, LF1, LF3, LF4, LG4, LG7, LG9, LH2, LH4

Grey: 15, 18, 20, 40, 72, 73, 85, 86, 92, 162, 168, CGD, LB5, LB8, LB9, LD3, LE6, LF5, LG2, LG6, LH7, LH9, TG1, TG4, WGD

Tan: 47, 63, 76, 101, 113, 132, 149, 167, 284, 548, 725, BRD, CPD, LA7, LB1, LD6, TG9, TH2, TH3

Yellow: 70, LB7, LF7, LJ4

White Grit Tape available by special order
Photoluminescent Tape available

40 Black: Insert contrasts with colors 01, 12, 21, 24, 27, 28, 29, 31, 32, 38, 41, 48, 55, 58, 59, 62, 71, 84, 106, 121, 129, 134, 150, 151, 163, 190, 192, 280, 281, 282, 293, 486, AGM, BRL, BRM, CGL, CGM, CPM, WGL, WGM, LA2, LA3, LA5, LA6, LA8, LB4, LB6, LC8, LC1, LC2, LC3, LC4, LC5, LC6, LC7, LD1, LD2, LD4, LD5, LD7, LE1, LE3, LE7, LF2, LF6, LF8, LF9, LG1, LG3, LG8, LH3, LH7, LJ1, LJ2, LJ3, LJ5, LJ7, LJ8, LJ9, LK1, TB6, TG2, TG3, TG5, TG6, TG7, TG8, TH1

47 Brown: 09, 11, 22, 33, 34, 42, 45, 49, 68, 80, 130, 469, LA1, LA9, LB2, LB3, LC9, LD8, LD9, LE2, LE4, LE5, LE8, LE9, LF1, LF3, LF4, LG4, LG7, LG9, LH2, LH4

55 Silver Grey: 15, 18, 20, 40, 72, 73, 85, 86, 92, 162, 168, CGD, LB5, LB8, LB9, LD3, LE6, LF5, LG2, LG6, LH7, LH9, TG1, TG4, WGD

49 Beige: 47, 63, 76, 101, 113, 132, 149, 167, 284, 548, 725, BRD, CPD, LA7, LB1, LD6, TG9, TH2, TH3

Landing Tile

All tiles available in 24" x 24". Smooth is also available in 12" x 12".



Smooth (C) Diamond (CN)

All tile textures can be used as landing tile.

COLOR PALETTE AVAILABILITY

- = Available in Solids Color Palette
- = MicroTone™ Speckled colorways
- = Can be ordered in Metallurgy colorways
- = Can be special ordered in Prima® Marbleized and Prima Olio® colorways. Visit tarkettna.com. Minimums may apply
- = Can be special ordered in Speckled colorways.

Stair Tread Insert Color Combinations

- = See chart on page 11 for recommended contrasting color combinations.

Sizes/Available Lengths

- = 3'^A, 3.5'^A, 4', 4.5', 5', 6'
- = 3'^A, 3.5'^A, 4', 4.5', 5', 6', 7', 8'
- = 3'^A, 3.5'^A, 4', 4.5', 5', 6', 7', 8', 9'

Δ Denotes special order.

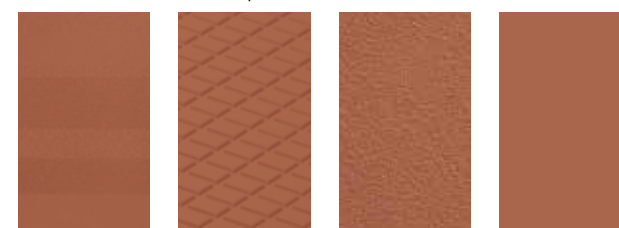
Enlarged Textures Below

Indoor Air Quality
Low Emitting materials EQ 4.3
FloorScore™ certified and meets CA 01350

Angle Fit Rubber Stair Treads Textures



Raised Round Raised Square Hammered Bamboo Cubis



Fast Lane Diamond Rice Paper Smooth



Angle Fit™ Rubber Stair Treads without Integrated Riser

Standard Rubber Stair Treads

Bamboo Tread (BMNT)
S ▲ ★ X

Cubis Tread (CUBT)
S ▲ ★ X

Fast Lane Tread (CFLNT)
S ▲ ★ X

Standard Rubber Stair Treads for the Visually Impaired

Bamboo Tread Visually Impaired (VIBMNT)
S ▲ ★ X

Cubis Tread Visually Impaired (VICUBT)
S ▲ ★ X

Fast Lane Tread Visually Impaired (VICFLNT)
S ▲ ★ X

Raised Round Tread (RNRD)
S ▲ ★ Y

Raised Square Tread (RNSQ)
S ▲ ★ X

Hammered Tread (HMNT) 12 1/4" deep (HMNTD) 14" deep
S ▲ M Z

Raised Round Tread without Riser Visually Impaired (VIRNRD)
S ▲ ★ Y

Raised Square Tread without Riser Visually Impaired (VIRSQ)
S ▲ ★ X

Hammered Tread without Riser Visually Impaired (VIHMNT) 12 1/4" deep (VIHMNTD) 14" deep
S ▲ M Z

Service Weight Smooth Tread (SN)
S X

Service Weight Smooth Tread Visually Impaired (VISN)
S X

Diamond Tread (CNN)
S ▲ ★ X

Diamond Tread Visually Impaired (VICNN)
S ▲ ★ X

Rice Paper Tread (FRPANT)
S ▲ ★ X

Rice Paper Tread Visually Impaired (VIFRPANT)
S ▲ ★ X

Service Weight Safe-T-Grip Tread (SAN)
S X

Service Weight Safe-T-Grip Tread Visually Impaired (VISAN)
S X

Vinyl Stair Treads

Vinyl Treads

Heavy Duty Square Nose (HD)
C W

Safe-T-Rib® Square Nose (HT)
C W

Safe-T-Rib Round Nose (HT)
C W

Service Weight Square Nose (ST)
C W

Service Weight Round Nose (ST)
C W

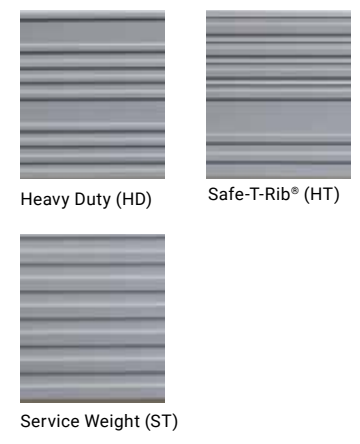
Vinyl Treads for the Visually Impaired

Heavy Duty Square Nose Visually Impaired (VIHD)
C X W

Safe-T-Rib Square Nose Visually Impaired (VIHT)
C X W

Safe-T-Rib Round Nose Visually Impaired (VIHT)
C X W

Safe-T-Grip Square Nose Visually Impaired (VIG)
C X W



Visually Impaired Color Solutions

Grit Tape Color +

- Black
- Brown
- Grey
- Tan
- Yellow
- White

Black Grit Tape contrasts with colors 01, 21, 24, 28, 29, 31, 32, 38, 48, 55, 58, 71, 129, 150
Brown Grit Tape contrasts with colors 09, 11, 22, 34, 42, 45, 49, 80, 130
Grey Grit Tape contrasts with colors 18, 20, 40, 85, 86, 92
Tan Grit Tape contrasts with colors 44, 47, 63, 76, 132, 167, 283
Yellow Grit Tape available by special order
White Grit Tape available by special order

Co-Extruded Vinyl insert X

- 40 Black
- 47 Brown
- 49 Beige
- 55 Silver Grey

40 Black Insert contrasts with colors 01, 21, 24, 28, 29, 31, 32, 38, 48, 55, 58, 59, 71, 129, 150
47 Brown Insert contrasts with colors 09, 11, 22, 34, 42, 45, 49, 80, 130
49 Beige Insert contrasts with colors 44, 47, 63, 76, 132, 167, 283
55 Silver Grey Insert contrasts with colors 18, 20, 40, 85, 86, 92

Rubber Landing Tile for Use with Vinyl Stair Treads

Tiles available in 24" x 24" and in 12" x 12".
Smooth (C)
S ▲

All tile textures can be used as landing tile.



COLOR PALETTE AVAILABILITY

C = ColorMatch Palette

Stair Tread Insert Color Combinations

- + = See chart on page 13 for recommended contrasting color combinations.
- X = See chart on page 13 for recommended contrasting color combinations.
- S = Available in Solids Color Palette
- ▲ = Can be specially ordered in Prima Marbleized and Prima Olio colorways. Visit tarkettna.com. Minimums may apply.

Sizes / Available Lengths

W = 3', 3.5', 4', 6', 8', 12'

How to Order: Product Code – Color Number – Length – Nose Type
(Example: VIHD – 18 – 4' SQ Navy Blue)(Example: S/B VIHD – 18 – 4' SQ)

ANGLE FIT™ RUBBER STAIR TREADS

TECHNICAL DATA	STANDARDS	RUBBER STAIR TREADS
Type of Floor Covering	ASTM F 2169	Resilient Stair Treads
Classification	ASTM F 2169	Type TS, Class 1 and 2, Group 1 and 2
Resistance to Heat	ASTM F 1514	$\Delta E \leq 8.0$
Resistance to Light	ASTM F 1515	$\Delta E \leq 8.0$
Hardness	ASTM D 2240	Min 85 Shore A
Slip Resistance	ASTM D 2047	SCOF ≥ 0.5
Flame Resistance	ASTM E 648	Class 1
Smoke Density	ASTM E 662	< 450
Chemical Resistance	ASTM F 925	Good
Size		3' to 9' wide
Colorways		More than 200
Surface Textures		9

Please visit tarkettna.com for the most updated specifications, installation, cleaning and maintenance instructions.



VINYL STAIR TREADS

TECHNICAL DATA	STANDARDS	VINYL STAIR TREADS
Type of Floor Covering	ASTM F 2169	Resilient Stair Treads
Classification	ASTM F 2169	Type TV, Class 2, Group 1 & 2
Heat Resistance by Color Change	ASTM F 1514	$\Delta E \leq 8.0$
Light Resistance by Color Change	ASTM F 1515	$\Delta E \leq 8.0$
Hardness	ASTM D 2240	Min 85 Shore A
Slip Resistance	ASTM D 2047	SCOF ≥ 0.5
Flame Resistance	ASTM E 648	Class 1
Smoke Density	ASTM E 662	≤ 450
Chemical Resistance	ASTM F 925	Good
Size		3' to 12' Wide
Colors		36
Styles		5

Please visit tarkettna.com for the most updated specifications, installation, cleaning and maintenance instructions.



On the Cover:
 Angle Fit™ Rubber Stair Tread
 Mesto PS3 Noble Knight



Angle Fit™ Rubber Stair Tread
ORGANICS RH6 Emperador CG

Tarkett North America
30000 Aurora Rd
Solon, OH 44139
800.899.8916
tarkettna.com

42399400057

©2018 Tarkett North America
11/2018