



MASTERPAV FLOORS & WALLS

Products Catalogue



ABOUT US

The Master Materials Group comprises:

- Master Materials Manufacturing Sdn Bhd
- Master Materials Marketing Sdn Bhd
- Master Materials Contracting Sdn Bhd

All three companies work in tandem to manufacture, market and apply the group's specialized and unique decorative concrete, composite and aggregate based flooring systems for the property and infrastructure sectors.

Founded in 1979, Master Materials has since grown its manufacturing business rapidly and is today a dynamic and leading player in the decorative concrete industry in Malaysia.

Over the past decades, Master Materials has established a strong foothold in the market, having successfully featured its products in many major and prominent projects in the commercial and residential sectors in the country. It is continuously striving to sustain its quality and innovative capabilities to develop new products and solutions that are practical enough to adapt to the challenges and meet the needs of the building and construction industry.

MASTERPAV SYSTEM & PRODUCT

01

DECORATIVE CONCRETE SYSTEMS

- 1.1 MASTERPAV Stamped Concrete
- 1.2 MASTERPAV Sandwash
- 1.3 MASTERPAV Broom Finish
- 1.4 MASTERPAV Speed Ramp
- 1.5 MASTERPAV Exposed Aggregates
- 1.6 MASTERPAV Bush Hammer
- 1.7 MASTERPAV Pebbles Wash

02

DECORATIVE RESIN AGGREGATE SYSTEM

- 2.1 MASTERPAV RESIN PEBBLE
 - 2.1.1 AQUAPAV PEBBLES
 - 2.1.2 EPICPAV PEBBLES
 - 2.1.3 PURITYPAV PEBBLES
- 2.2 MASTERPAV RESIN QUARTZ
 - 2.2.1 EPICPAV QUARTZ
 - 2.2.2 PURITYPAV QUARTZ

03

DECORATIVE MICRO OVERLAY SYSTEM

- 3.1 MASTERPAV ET100 EXTERION TEXTURE
- 3.2 MASTERPAV RJ500 REJUVENATE

04

DECORATIVE CONCRETE COATING SYSTEM

- 4.1 MASTERPAV Roll-On Epoxy
- 4.2 MASTERPAV Self-Levelling Epoxy
- 4.3 MASTERPAV Metallic Epoxy

05

CONCRETE SEALER SERIES

- 5.1 MASTERPAV AS20 Acrylic Sealer Primer
- 5.2 MASTERPAV AS28 Gloss Acrylic Sealer
- 5.3 MASTERPAV AS40 Heavy Duty Acrylic Sealer
- 5.4 MASTERPAV TS2.5 Tinted Sealer
- 5.5 MASTERPAV AS23 Matte Acrylic Sealer
- 5.6 MASTERPAV AS3.0 Anti Slip Acrylic Sealer
- 5.7 MASTERPAV WB5.0 Water-Based Acrylic Sealer
- 5.8 MASTERPAV SX115 Penetrating Sealer

06

CONCRETE COATING SERIES

- 6.1 MASTERPAV EC10 SF Epoxy Primer
- 6.2 MASTERPAV EC13 SF Epoxy Coating
- 6.3 MASTERPAV EC17 SL Epoxy Coating
- 6.4 MASTERPAV EC19 Metallic Epoxy Coating
- 6.5 MASTERPAV PUC600 Gloss Finish

07

SURFACE TREATMENTS

- 7.1 MASTERPAV AG120 Bonding Compound
- 7.2 MASTERPAV AG180 Bonding Compound
- 7.3 MASTERPAV NA5.4 Multipurpose Floor Cleaner
- 7.4 MASTERPAV CP9 Crack Repair Powder
- 7.5 MASTERPAV EP501 Part A+B
- 7.6 MASTERPAV Thinner 101
- 7.7 MASTERPAV Sealer Remover 102
- 7.8 MASTERPAV W25 Floor Wax Emulsion

08

CONCRETE TOOLS

- | | |
|---|-------------------------------------|
| 8.1 Bullnose Edger 406 | 8.12 Tamper |
| 8.2 Bullnose Edger 700 | 8.13 Ornamental Tool, Leaf & Square |
| 8.3 Bullnose Edger 402s | 8.14 Rigid Nylon Broom |
| 8.4 Hand Edger 8302/8303 | 8.15 Pebble Wash Broom |
| 8.5 Hand Groover V8202 | 8.16 Walking Trowel |
| 8.6 Japanese Trowel | 8.17 Aluminium Bull Float |
| 8.7 Pointed Trowel | 8.18 Multiclip Handle |
| 8.8 Magnesium Round End Handle Float | 8.19 Hopper Gun |
| 8.9 Walking Groover 8209 | 8.20 Abrasive Brick 8401/8402 |
| 8.10 Blue Steel Step Trowel 8401/8402 | 8.21 Filament Tape |
| 8.11 High Carbon Steel Square End Trowel 8104 | 8.22 Spiked Shoe |

1.0 DECORATIVE CONCRETE SYSTEMS

1.1 MASTERPAV STAMPED CONCRETE

MASTERPAV Stamped Concrete is designed to produce patterned and coloured concrete surfaces textured to resemble slate, stones and various other natural materials. Decorative concrete today is not only affordable but also offers durability and aesthetic values.

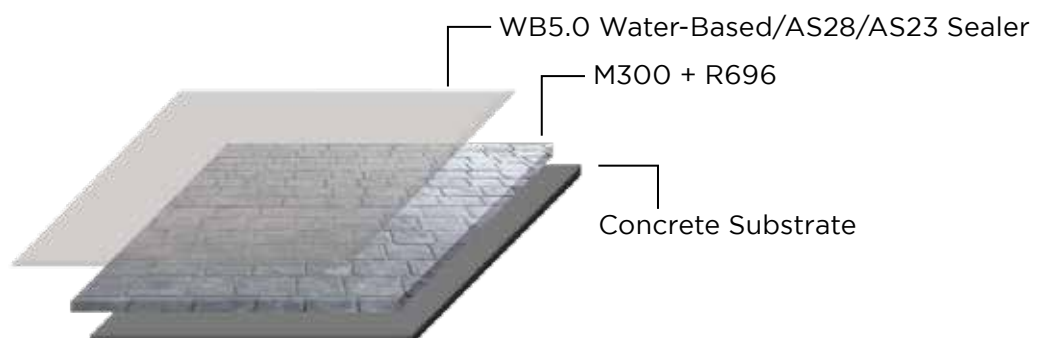
The system uses a dry-shake colour hardener, colour releaser, sealer and various stamping moulds and motifs. It is stamped to the surface of freshly poured concrete with a minimum strength of 25MPa and thickness of $\pm 100\text{mm}$.



RECOMMENDED APPLICATION AREA

- Carpark
- Entrance of Bungalow
- Hotel Entrance
- Swimming Pool Deck
- Pavement Walk
- Residential House

SYSTEM INFORMATION



REFER TO PRODUCT



MASTERPAV M300 COLOUR HARDENER

MASTERPAV M300 Colour Hardener is normally sprinkle onto fresh wet concrete floors and trowel for a smooth finishing prior stamping take place. Specially formulated to provide better abrasion for the concrete flooring.

Theoretical Coverage: 4Kg/m²



MASTERPAV R696 COLOUR RELEASER

MASTERPAV R696 Colour Releaser is a ready to use, dry-shake releaser available in variety of colours. It is used to release moulds for stamped concrete from sticking to the concrete surface. MASTERPAV R696 also acts as a curing compound and colouring agent to give a desired two tone effect.

Theoretical Coverage: 0.16Kg/m²



MASTERPAV CI16 CLEANER

MASTERPAV CI16 Cleaner is colourless and odorless materials blend of surfactants and acid solutions. It is specially design as a releaser cleaner for stamped concrete. It also can be use to remove rust, scale, lime, hard water deposits, grease and etc.

Theoretical Coverage: 200m²/pails (20lit). To dilute with water

MASTERPAV CONCRETE SEALER



MASTERPAV WB5.0 ACRYLIC SEALER

MASTERPAV WB 5.0 is a water-based acrylic sealer that offers long-term durability and adequate protection against efflorescence. It offers good protection against mild chemicals to concrete surfaces. MASTERPAV WB 5.0 is the ideal choice for both interior and exterior surfaces.

Theoretical Coverage: 3-5 m²/Kg.

OR



MASTERPAV AS28 GLOSS ACRYLIC SEALER

MASTERPAV AS28 Gloss Acrylic Sealer is a solvent based clear finish which creates a wet look seal for the concrete flooring. It is highly advised to apply MASTERPAV AS28 by roller for an even finishing. It dries fast and imparts onto the concrete surfaces a gloss finish and good protection from surface staining. It could be coated on interior and exterior concrete imprint surfaces, pebble floors, slate and other concrete flooring materials.

It is important to ensure that the surface receiving the MASTERPAV AS28 is dry, clean and free from dust prior application to ensure maximum adhesion.

OR













MASTERPAV AS23 MATTE ACRYLIC SEALER

MASTERPAV AS23 Matte Acrylic Sealer is a solvent based clear finish which creates a wet look seal for the concrete flooring. It is highly advised to apply MASTERPAV AS23 by roller for an even finishing. It dries fast and imparts onto the concrete surfaces a matte finish and good protection from surface staining. It could be coated on interior and exterior concrete imprint surfaces, pebble floors, slate and other concrete flooring materials.

It is important to ensure that the surface receiving the MASTERPAV AS23 is dry, clean and free from dust prior application to ensure maximum adhesion.

MASTERPAV M300 COLOUR CHART

					
VISTA GREY G1-1	LIGHT GREY G2-1	STEEL BLUE G3-1	BLUE STONE G2-2	OYSTER GREY G2-3	DARK OYSTER GREY G2-4
					
BLACK G1-2	SUMMER GREEN G4-2	SUMMER GREEN G4-1	SAND STONE G2-5	OLIVE G2-7	BUFF G3-2
					
EARTH G2-8	TERRACOTTA G2-9	GOLDEN CREAM G2-6	PUMPKIN G1-3	RED ORANGE G1-4	MARIGOLD G2-10
					
TILE RED G3-6	CISCO RED G2-11	PEACH G3-3	NUTMEG G3-4	COFFEE G3-7	BIRCH BROWN G3-9
					
COCO BROWN G3-8	OLIVE BROWN G1-5	CINNAMON G3-5	CHESTNUT BROWN G1-6	FAWN BROWN G1-7	CHOCOLATE BROWN G1-8

Note:

Colours shown in this chart will be varied from the actual colour hardener. Color variation will be expected in the final product due to differing site condition and finishing techniques. A combination of colour hardener and releaser colour can also produce different colour appearance than anticipated due to pigment interaction. Custom colours available upon request.

MASTERPAV STAMPING MOULD



G1-1 ASHLAR SLATE



G1-2 ASHLAR STONE US



G1-3 FLAGSTONE



G1-4 FLEMISH



G1-5 LA HABRA



G1-6 ROMAN SLATE TILE



G1-7 GRANITE



**G1-8 PACIFIC
BOARDWALK**



G1-9 FEDERATION



G1-10 CANYON STONE



G1-11 RANDOM STONE



G1-12 RIAU STONE



G1-13 MEDITERRANEAN



G1-14 REX COBBLESTONE



G1-15 HERRINGBONE



G1-16 BRICK BORDER



G2-1 SLATE TILE



G3-1 EUROPEAN FAN



**G3-2 LA HABRA ASHLAR
SLATE**



**G3-3 ROYAL ASHLAR
SLATE**



G3-4 ROYAL TILE



G3-5 ITALIAN TILE



G4-1 SERPENTINE SLATE



G5-1 TEXTURE SKIN



G6-1 REGAL



**G7-1 RANDOM
COBBLESTONE**



G8-1 RIVER SLATE ROCK

Note:
All measurements are in mm (millimeters). Mould measurements are approximate only.
Product images are for illustrative purposes only and may differ from the actual product or results.

1.2 MASTERPAV SANDWASH

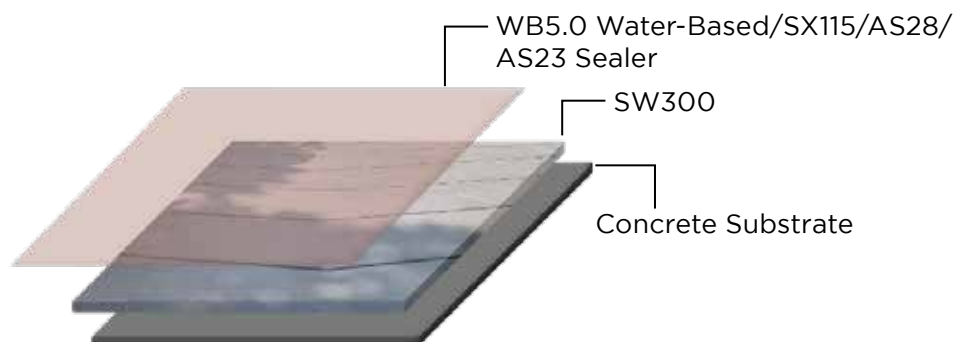
MASTERPAV Sandwash Finishing System provides a beautiful surface that resembles the hard sand similar to the ocean beaches. Sandwash finishing, also known as landscape, is available in various colours. Customization with different colours of sand could be done to further improve the aesthetics of your floor finishing. Sandwash finishing also provides better slip resistivity around wet areas such as swimming pools. It is ideal for both residential and commercial projects.



RECOMMENDED APPLICATION AREA

- Driveways
- Patios
- Walkways
- Stairways
- Pool decks
- Plaza & public spaces

SYSTEM INFORMATION



REFER TO PRODUCT



MASTERPAV SW300 SANDWASH HARDENER

MASTERPAV SW300 Sandwash Hardener is normally sprinkled onto fresh wet concrete floors and trowel for a smooth finishing prior washing take place. Specially formulated to provide better abrasion for the concrete flooring. Besides that, MASTERPAV SW300 Sandwash Hardener provides a beautiful surface which resembles the hard sand at ocean beaches.

Theoretical Coverage: 6Kg/m²



MASTERPAV SW1.0 ACID CLEANER

MASTERPAV SW1.0 Acid Cleaner is a ready to use acid cleaner specially formulated for Sandwash and Pebblewash finishing. It is also suitable to be used as general cleaner where dilution may be required, where the ratio will be depending on the conditions on site.

Theoretical Coverage: 1.2Lit/m²

MASTERPAV CONCRETE SEALER



MASTERPAV WB5.0 ACRYLIC SEALER

MASTERPAV WB 5.0 is a water-based acrylic sealer that offers long-term durability and adequate protection against efflorescence. It offers good protection against mild chemicals to concrete surfaces. MASTERPAV WB 5.0 is the ideal choice for both interior and exterior surfaces.

Theoretical Coverage: 3-5 m²/Kg.

OR



MASTERPAV SX115 PENETRATING SEALER

MASTERPAV SX115 is a non-filming deep penetrating solvent-based silane-siloxane water-repellent sealer. It is specially formulated to be clear, breathable, and water-repelling to protect concrete and masonry against the damaging effects of water intrusion.

Theoretical Coverage: Smooth concrete: 1Kg/m²

OR



MASTERPAV AS28 GLOSS ACRYLIC SEALER

MASTERPAV AS28 Gloss Acrylic Sealer is a solvent based clear finish which creates a wet look seal for the concrete flooring. It is highly advised to apply MASTERPAV AS28 by roller for an even finishing. It dries fast and imparts onto the concrete surfaces a gloss finish and good protection from surface staining. It could be coated on interior and exterior concrete imprint surfaces, pebble floors, slate and other concrete flooring materials.

It is important to ensure that the surface receiving the MASTERPAV AS28 is dry, clean and free from dust prior application to ensure maximum adhesion.

OR



MASTERPAV AS23 MATTE ACRYLIC SEALER

MASTERPAV AS23 Matte Acrylic Sealer is a solvent based clear finish which creates a wet look seal for the concrete flooring. It is highly advised to apply MASTERPAV AS23 by roller for an even finishing. It dries fast and imparts onto the concrete surfaces a matte finish and good protection from surface staining. It could be coated on interior and exterior concrete imprint surfaces, pebble floors, slate and other concrete flooring materials.

It is important to ensure that the surface receiving the MASTERPAV AS23 is dry, clean and free from dust prior application to ensure maximum adhesion.

COLOUR CHART



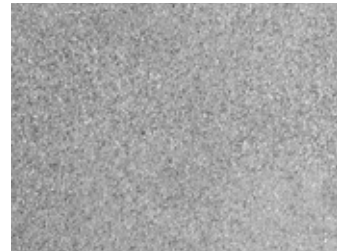
SW1 YELLOW



SW2 RED



SW3 BRONZE



SW4 OYSTER GREY



SW5 TIGER YELLOW



SW6 CHILI RED



SW7 PEARL BLACK

Note:

Colours shown in this chart will be varied from the actual colour hardener. Color variation will be expected in the final product due to differing site condition and finishing techniques. A combination of colour hardener and releaser colour can also produce different colour appearance than anticipated due to pigment interaction. Custom colours available upon request.

1.3 MASTERPAV BROOM FINISH

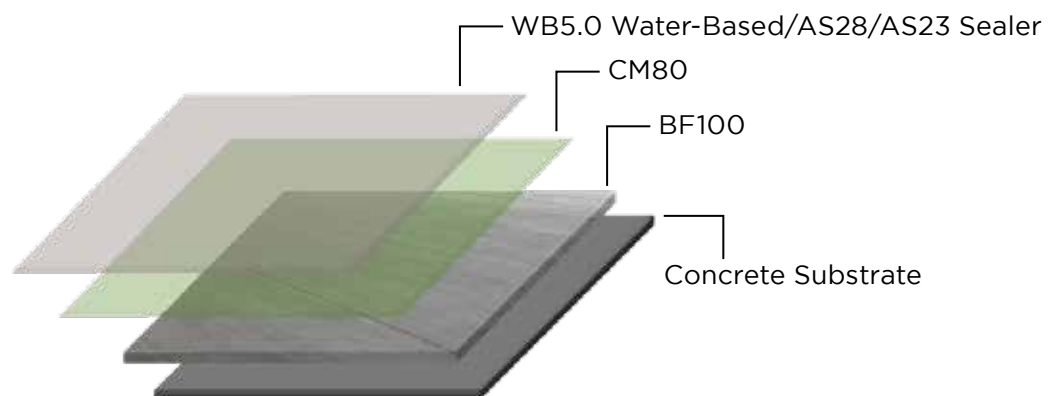
MASTERPAV Broom Finish is a concrete finish with broom texture and it is an ideal way to make a concrete surface slip-resistant. When applied properly, the newly broomed surface creates a slip resistant finish that is ready to be sealed to protect against staining.



RECOMMENDED APPLICATION AREA

- Driveways
- Courtyards
- Sidewalks & walkways
- Car parks
- Patios

SYSTEM INFORMATION



REFER TO PRODUCT



MASTERPAV BF100 COLOUR HARDNER

MASTERPAV BF100 BF Colour Hardener is a ready to use dry silica quartz mineral aggregates. Suitable for finishing, hardening and coloring over freshly floated and leveled concrete flat-work where the surface is required for broom finish effect. For non-colour finishes to seal with MASTERPAV CM80 Curing Compound while for colour finishes to seal with MASTERPAV Concrete Sealer.

Theoretical Coverage: 4Kg/m²



MASTERPAV CM80 CURING COMPOUND

MASTERPAV CM80 Curing Compound is a water base emulsion of special resins which form an efficient curing film on concrete. It provide reliable protection against rapid evaporation of water in concrete, whether exposed to direct sunlight or under severe rapid drying conditions caused by wind, low humidity or high ambient or concrete temperatures.

MASTERPAV CM80 can be use to protect fresh concrete from rapid water evaporation caused by wind or sunlight and to reduce surface cracking. Recommended for industrial concrete floor, exterior paving and etc.

Theoretical Coverage : 4 - 5 sq mtr per litre

MASTERPAV CONCRETE SEALER



MASTERPAV WB5.0 ACRYLIC SEALER

MASTERPAV WB 5.0 is a water-based acrylic sealer that offers long-term durability and adequate protection against efflorescence. It offers good protection against mild chemicals to concrete surfaces. MASTERPAV WB 5.0 is the ideal choice for both interior and exterior surfaces.

Theoretical Coverage: 3-5 m²/Kg.

OR



MASTERPAV AS28 GLOSS ACRYLIC SEALER

MASTERPAV AS28 Gloss Acrylic Sealer is a solvent based clear finish which creates a wet look seal for the concrete flooring. It is highly advised to apply MASTERPAV AS28 by roller for an even finishing. It dries fast and imparts onto the concrete surfaces a gloss finish and good protection from surface staining. It could be coated on interior and exterior concrete imprint surfaces, pebble floors, slate and other concrete flooring materials.

It is important to ensure that the surface receiving the MASTERPAV AS28 is dry, clean and free from dust prior application to ensure maximum adhesion.

OR



MASTERPAV AS23 MATTE ACRYLIC SEALER

MASTERPAV AS23 Matte Acrylic Sealer is a solvent based clear finish which creates a wet look seal for the concrete flooring. It is highly advised to apply MASTERPAV AS23 by roller for an even finishing. It dries fast and imparts onto the concrete surfaces a matte finish and good protection from surface staining. It could be coated on interior and exterior concrete imprint surfaces, pebble floors, slate and other concrete flooring materials.

It is important to ensure that the surface receiving the MASTERPAV AS23 is dry, clean and free from dust prior application to ensure maximum adhesion.

BROOM TYPE

CONCRETE FINISHING BROOM



50CM



80CM

*Kindly refer to M300 Colour Chart at pg10.

1.4 MASTERPAV SPEED RAMP

MASTERPAV Carpark Ramp System improves vehicle safety by reducing traffic speed. The speed ramp application uses O-Ring, straight groove line or heavy textured stamping moulds on reinforced concrete surfaces, in addition to colour or non-color hardener. Ideal for elevated ramps in commercial buildings.

1.4.1 O-RING FINISH

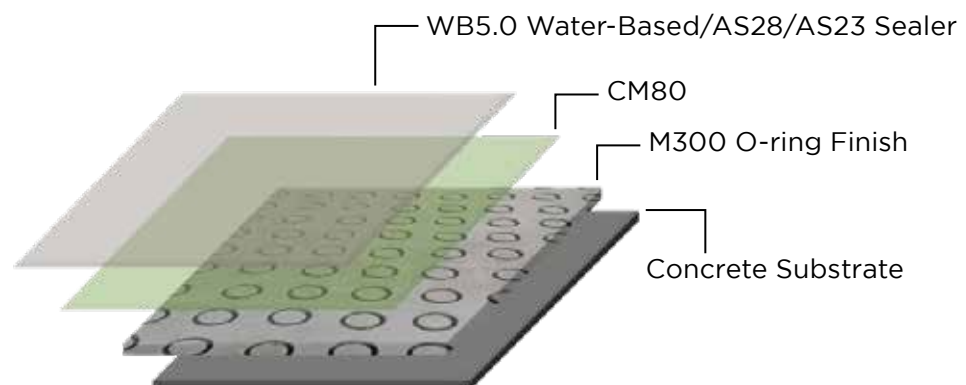
MASTERPAV O-Ring is a concrete finish with an O-Ring pattern. It is suitable to be used at speed ramp. O-ring is generally used to reduce the speed of vehicles.



RECOMMENDED APPLICATION AREA

- Car Park Ramp

SYSTEM INFORMATION



REFER TO PRODUCT



MASTERPAV M300 COLOUR HARDENER

MASTERPAV M300 Colour Hardener is normally sprinkle onto fresh wet concrete floors and trowel for a smooth finishing prior stamping take place. Specially formulated to provide better abrasion for the concrete flooring.

Theoretical Coverage: 4Kg/m²



MASTERPAV CM80 CURING COMPOUND

MASTERPAV CM80 Curing Compound is a water base emulsion of special resins which form an efficient curing film on concrete. It provide reliable protection against rapid evaporation of water in concrete, whether exposed to direct sunlight or under severe rapid drying conditions caused by wind, low humidity or high ambient or concrete temperatures.

MASTERPAV CM80 can be use to protect fresh concrete from rapid water evaporation caused by wind or sunlight and to reduce surface cracking. Recommended for industrial concrete floor, exterior paving and etc.

Theoretical Coverage : 4 - 5 sq mtr per litre

MASTERPAV CONCRETE SEALER



MASTERPAV WB5.0 ACRYLIC SEALER

MASTERPAV WB 5.0 is a water-based acrylic sealer that offers long-term durability and adequate protection against efflorescence. It offers good protection against mild chemicals to concrete surfaces. MASTERPAV WB 5.0 is the ideal choice for both interior and exterior surfaces.

Theoretical Coverage: 3-5 m²/Kg.

OR



MASTERPAV AS28 GLOSS ACRYLIC SEALER

MASTERPAV AS28 Gloss Acrylic Sealer is a solvent based clear finish which creates a wet look seal for the concrete flooring. It is highly advised to apply MASTERPAV AS28 by roller for an even finishing. It dries fast and imparts onto the concrete surfaces a gloss finish and good protection from surface staining. It could be coated on interior and exterior concrete imprint surfaces, pebble floors, slate and other concrete flooring materials.

It is important to ensure that the surface receiving the MASTERPAV AS28 is dry, clean and free from dust prior application to ensure maximum adhesion.

OR



MASTERPAV AS23 MATTE ACRYLIC SEALER

MASTERPAV AS23 Matte Acrylic Sealer is a solvent based clear finish which creates a wet look seal for the concrete flooring. It is highly advised to apply MASTERPAV AS23 by roller for an even finishing. It dries fast and imparts onto the concrete surfaces a matte finish and good protection from surface staining. It could be coated on interior and exterior concrete imprint surfaces, pebble floors, slate and other concrete flooring materials.

It is important to ensure that the surface receiving the MASTERPAV AS23 is dry, clean and free from dust prior application to ensure maximum adhesion.

MASTERPAV O-RING TOOLS



MOULD O-RING



O-RING

1.4.2 GROOVELINE

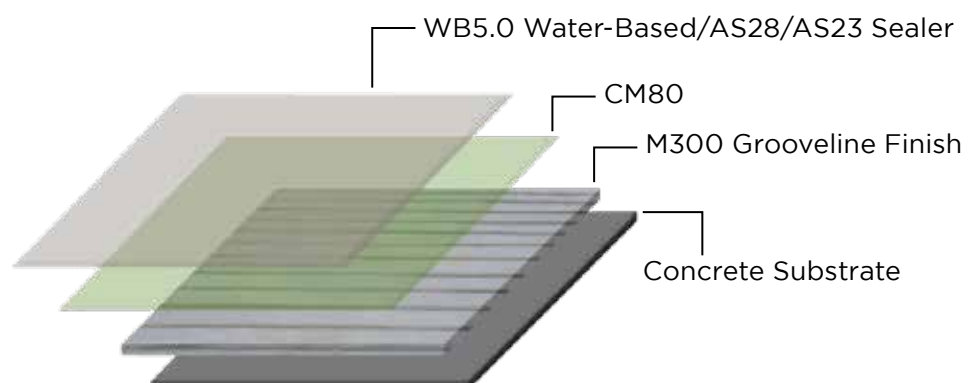
MASTERPAV Grooveline is a concrete finish with a groove line pattern. It is suitable to reduce the speed of vehicle. Besides that, the groove line pattern improves the skid resistivity for the vehicle to maneuver around car park ramps. Ideal for car park ramps.



RECOMMENDED APPLICATION AREA

- Car Park Ramp

SYSTEM INFORMATION



REFER TO PRODUCT



MASTERPAV M300 COLOUR HARDENER

MASTERPAV M300 Colour Hardener is normally sprinkle onto fresh wet concrete floors and trowel for a smooth finishing prior stamping take place. Specially formulated to provide better abrasion for the concrete flooring.

Theoretical Coverage: 4Kg/m²



MASTERPAV CM80 CURING COMPOUND

MASTERPAV CM80 Curing Compound is a water base emulsion of special resins which form an efficient curing film on concrete. It provide reliable protection against rapid evaporation of water in concrete, whether exposed to direct sunlight or under severe rapid drying conditions caused by wind, low humidity or high ambient or concrete temperatures.

MASTERPAV CM80 can be use to protect fresh concrete from rapid water evaporation caused by wind or sunlight and to reduce surface cracking. Recommended for industrial concrete floor, exterior paving and etc.

Theoretical Coverage : 4 - 5 sq mtr per litre

MASTERPAV CONCRETE SEALER



MASTERPAV WB5.0 ACRYLIC SEALER

MASTERPAV WB 5.0 is a water-based acrylic sealer that offers long-term durability and adequate protection against efflorescence. It offers good protection against mild chemicals to concrete surfaces. MASTERPAV WB 5.0 is the ideal choice for both interior and exterior surfaces.

Theoretical Coverage: 3-5 m²/Kg.

OR



MASTERPAV AS28 GLOSS ACRYLIC SEALER

MASTERPAV AS28 Gloss Acrylic Sealer is a solvent based clear finish which creates a wet look seal for the concrete flooring. It is highly advised to apply MASTERPAV AS28 by roller for an even finishing. It dries fast and imparts onto the concrete surfaces a gloss finish and good protection from surface staining. It could be coated on interior and exterior concrete imprint surfaces, pebble floors, slate and other concrete flooring materials.

It is important to ensure that the surface receiving the MASTERPAV AS28 is dry, clean and free from dust prior application to ensure maximum adhesion.

OR



MASTERPAV AS23 MATTE ACRYLIC SEALER

MASTERPAV AS23 Matte Acrylic Sealer is a solvent based clear finish which creates a wet look seal for the concrete flooring. It is highly advised to apply MASTERPAV AS23 by roller for an even finishing. It dries fast and imparts onto the concrete surfaces a matte finish and good protection from surface staining. It could be coated on interior and exterior concrete imprint surfaces, pebble floors, slate and other concrete flooring materials.

It is important to ensure that the surface receiving the MASTERPAV AS23 is dry, clean and free from dust prior application to ensure maximum adhesion.

1.5 MASTERPAV EXPOSED AGGREGATES

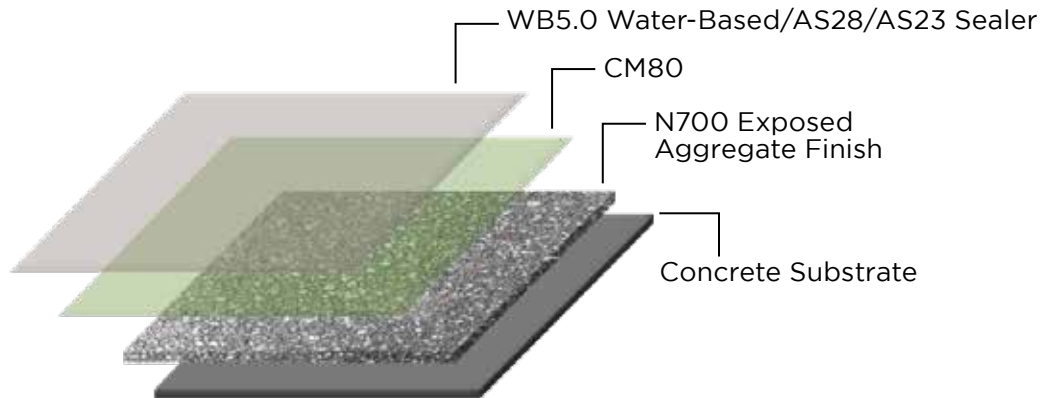
MASTERPAV Exposed Aggregate System is created by removing the top layer of cement to expose the aggregate that lies beneath. The system is a popular option for driveways, patios, and pavement area. Exposed aggregate concrete is durable enough to endure heavy traffic from both foot and vehicle traffic. Use our MASTERPAV Integral Colourant N700 palette to add a touch of individuality to your work.



RECOMMENDED APPLICATION AREA

- Driveways
- Patios
- Pavement
- Walkways

SYSTEM INFORMATION



REFER TO PRODUCT



MASTERPAV N700 INTEGRAL CONCRETE COLOURANT

MASTERPAV Integral Concrete Colourant is a pre-measured admixture for integrally colouring ready mixed concrete during batching. It is a blend of synthetic iron oxide pigment and non-fading colour in concrete.



MASTERPAV SW1.0 ACID CLEANER

MASTERPAV SW1.0 Acid Cleaner is a ready to use acid cleaner specially formulated for Sandwash and Pebblewash finishing. It is also suitable to be used as general cleaner where dilution may be required, where the ratio will be depending on the conditions on site.

Theoretical Coverage: 1.2Lit/m²



MASTERPAV CM80 CURING COMPOUND

MASTERPAV CM80 Curing Compound is a water base emulsion of special resins which form an efficient curing film on concrete. It provide reliable protection against rapid evaporation of water in concrete, whether exposed to direct sunlight or under severe rapid drying conditions caused by wind, low humidity or high ambient or concrete temperatures.

MASTERPAV CM80 can be use to protect fresh concrete from rapid water evaporation caused by wind or sunlight and to reduce surface cracking. Recommended for industrial concrete floor, exterior paving and etc.

Theoretical Coverage : 4 - 5 sq mtr per litre

MASTERPAV CONCRETE SEALER



MASTERPAV WB5.0 ACRYLIC SEALER

MASTERPAV WB 5.0 is a water-based acrylic sealer that offers long-term durability and adequate protection against efflorescence. It offers good protection against mild chemicals to concrete surfaces. MASTERPAV WB 5.0 is the ideal choice for both interior and exterior surfaces.

Theoretical Coverage: 3-5 m²/Kg.

OR



MASTERPAV AS28 GLOSS ACRYLIC SEALER

MASTERPAV AS28 Gloss Acrylic Sealer is a solvent based clear finish which creates a wet look seal for the concrete flooring. It is highly advised to apply MASTERPAV AS28 by roller for an even finishing. It dries fast and imparts onto the concrete surfaces a gloss finish and good protection from surface staining. It could be coated on interior and exterior concrete imprint surfaces, pebble floors, slate and other concrete flooring materials.

It is important to ensure that the surface receiving the MASTERPAV AS28 is dry, clean and free from dust prior application to ensure maximum adhesion.

OR



MASTERPAV AS23 MATTE ACRYLIC SEALER

MASTERPAV AS23 Matte Acrylic Sealer is a solvent based clear finish which creates a wet look seal for the concrete flooring. It is highly advised to apply MASTERPAV AS23 by roller for an even finishing. It dries fast and imparts onto the concrete surfaces a matte finish and good protection from surface staining. It could be coated on interior and exterior concrete imprint surfaces, pebble floors, slate and other concrete flooring materials.

It is important to ensure that the surface receiving the MASTERPAV AS23 is dry, clean and free from dust prior application to ensure maximum adhesion.



MASTERPAV 15-20MM TREATED AGGREGATES

***FOR REFERENCE ONLY**

1.6 MASTERPAV BUSH HAMMER SYSTEM

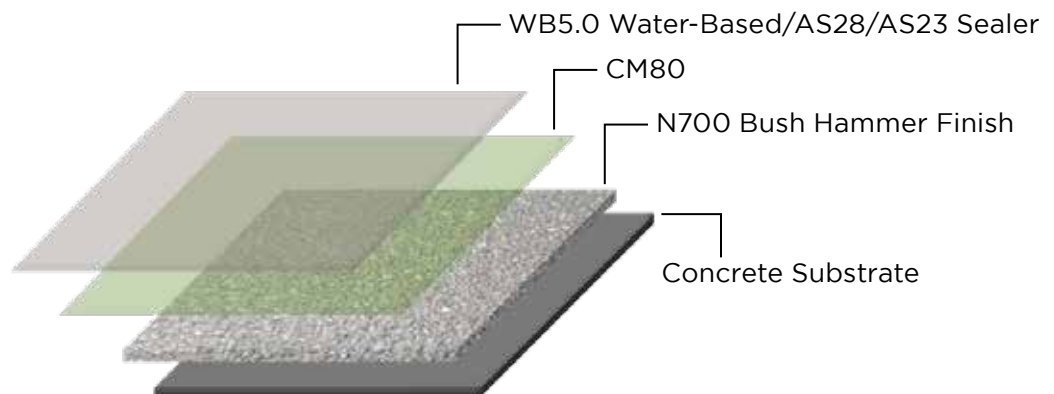
MASTERPAV Bush Hammer System provides a distinct, textured appearance to concrete surfaces. Using specialized equipment to create a pattern of microscopic depressions resembling the surface of naturally weathered rock. The end result is a visually appealing surface that not only improves the concrete's appearance but also enhances the slip resistance of the surface. Enhance your final result with the MASTERPAV Integral Colourant N700.



RECOMMENDED APPLICATION AREA

- Driveways
- Patios
- Pavement
- Walkways

SYSTEM INFORMATION



REFER TO PRODUCT



N700 INTEGRAL CONCRETE COLOURANT

MASTERPAV Integral Concrete Colourant is a pre-measured admixture for integrally colouring ready mixed concrete during batching. It is a blend of synthetic iron oxide pigment and non-fading colour in concrete.

MASTERPAV CONCRETE SEALER



MASTERPAV WB5.0 ACRYLIC SEALER

MASTERPAV WB 5.0 is a water-based acrylic sealer that offers long-term durability and adequate protection against efflorescence. It offers good protection against mild chemicals to concrete surfaces. MASTERPAV WB 5.0 is the ideal choice for both interior and exterior surfaces.

Theoretical Coverage: 3-5 m²/Kg.

OR



MASTERPAV AS28 GLOSS ACRYLIC SEALER

MASTERPAV AS28 Gloss Acrylic Sealer is a solvent based clear finish which creates a wet look seal for the concrete flooring. It is highly advised to apply MASTERPAV AS28 by roller for an even finishing. It dries fast and imparts onto the concrete surfaces a gloss finish and good protection from surface staining. It could be coated on interior and exterior concrete imprint surfaces, pebble floors, slate and other concrete flooring materials.

It is important to ensure that the surface receiving the MASTERPAV AS28 is dry, clean and free from dust prior application to ensure maximum adhesion.

OR



MASTERPAV AS23 MATTE ACRYLIC SEALER

MASTERPAV AS23 Matte Acrylic Sealer is a solvent based clear finish which creates a wet look seal for the concrete flooring. It is highly advised to apply MASTERPAV AS23 by roller for an even finishing. It dries fast and imparts onto the concrete surfaces a matte finish and good protection from surface staining. It could be coated on interior and exterior concrete imprint surfaces, pebble floors, slate and other concrete flooring materials.

It is important to ensure that the surface receiving the MASTERPAV AS23 is dry, clean and free from dust prior application to ensure maximum adhesion.

1.7 MASTERPAV PEBBLE WASH SYSTEM

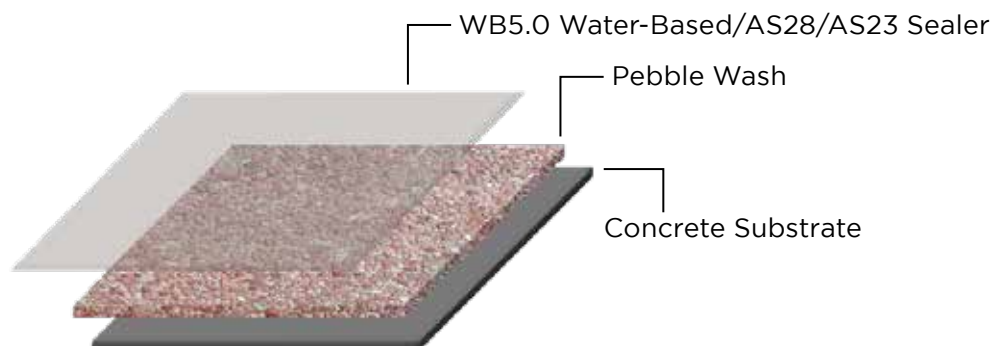
MASTERPAV Pebblewash provides a beautiful surface which resembles the pebbles stone similar to the river side. Pebblewash finishing, also known as granolithic finishing, is available in 8 colours. Customization with different colours of pebbles could be done to further improve the aesthetics of your floor finishing. It is normally used in driveways, patios, walkways and stairs.



RECOMMENDED APPLICATION AREA

- Driveways
- Patios
- Pavement
- Walkways

SYSTEM INFORMATION



REFER TO PRODUCT



PEBBLESTONE #3, #5 OR #10

Pebblestone of size #3, #5 and #10 are available for the pebblewash finishing. They're mixed with OPC and trowel to finish. After curing, the cementitious surface will be washed off to expose the natural pebbles finishing. Wide range of colours are available.



MASTERPAV PW1.0 PEBBLEWASH CLEANER

MASTERPAV PW1.0 Pebblewash Cleaner is a ready to use acid cleaner specially formulated for MASTERPAV Pebblewash. It is also suitable to be used as general cleaner where dilution may be required, where the ratio will be depending on the conditions on site.

Theoretical Coverage: 1.2Lit/m²

MASTERPAV CONCRETE SEALER



MASTERPAV WB5.0 ACRYLIC SEALER

MASTERPAV WB 5.0 is a water-based acrylic sealer that offers long-term durability and adequate protection against efflorescence. It offers good protection against mild chemicals to concrete surfaces. MASTERPAV WB 5.0 is the ideal choice for both interior and exterior surfaces.

Theoretical Coverage: 3-5 m²/Kg.

OR



MASTERPAV AS28 GLOSS ACRYLIC SEALER

MASTERPAV AS28 Gloss Acrylic Sealer is a solvent based clear finish which creates a wet look seal for the concrete flooring. It is highly advised to apply MASTERPAV AS28 by roller for an even finishing. It dries fast and imparts onto the concrete surfaces a gloss finish and good protection from surface staining. It could be coated on interior and exterior concrete imprint surfaces, pebble floors, slate and other concrete flooring materials.

It is important to ensure that the surface receiving the MASTERPAV AS28 is dry, clean and free from dust prior application to ensure maximum adhesion.

OR



MASTERPAV AS23 MATTE ACRYLIC SEALER

MASTERPAV AS23 Matte Acrylic Sealer is a solvent based clear finish which creates a wet look seal for the concrete flooring. It is highly advised to apply MASTERPAV AS23 by roller for an even finishing. It dries fast and imparts onto the concrete surfaces a matte finish and good protection from surface staining. It could be coated on interior and exterior concrete imprint surfaces, pebble floors, slate and other concrete flooring materials.

It is important to ensure that the surface receiving the MASTERPAV AS23 is dry, clean and free from dust prior application to ensure maximum adhesion.

2.0 DECORATIVE RESIN AGGREGATE SYSTEM

MASTERPAV Decorative Resin Aggregate System is expertly crafted to elevate the aesthetic appeal of any indoor or outdoor area. Achieve a seamless surface with this incredibly resilient and adaptable system that enhances the aesthetic charm of the surrounding areas through the use of coloured pebbles and quartz.

2.1 MASTERPAV RESIN PEBBLES

2.1.1 AQUAPAV PEBBLES

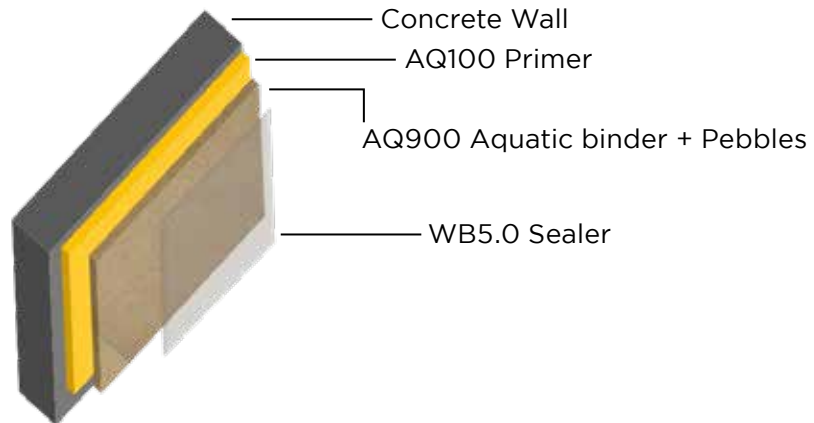
MASTERPAV AQUAPAV Pebbles is a highly popular decorative wall system offering a wide choice of textures and is available in many natural beautiful color pebbles fused to form a seamless surface with a specially formulated, clear, and high-quality acrylic binder. AQUAPAV Pebbles consists of a complete packaging for AQ100 Aquatic Primer, AQ900 Aquatic Binder and a bag of pebbles (#3). AQUAPAV Pebbles system is suitable to be used in both indoors & outdoors area where it is stable under weathering process.



RECOMMENDED APPLICATION AREA

- Restaurants
- Showrooms
- Offices
- Cafeterias
- Recreation room
- Residential house

SYSTEM INFORMATION



REFER TO PRODUCT



MASTERPAV COLOUR PEBBLES

MASTERPAV colour pebbles is an irregular rounded stone aggregates specially selected for use in cement-bound and resin bonded surfacing system. Available in variety of vibrant tones that is highly durable and resistant to weathering, erosion and crack making them ideal for both residential and commercial decorative projects.



MASTERPAV AQ100 PRIMER

MASTERPAV AQ100 Primer is a water-based, 1k product, and medium-viscosity aquatic primer. When applied over the wall concrete substrates, the primer penetrate deeply. This can be use and apply for indoor and outdoor.



MASTERPAV AQ900 AQUATIC BINDER

MASTERPAV AQ900 Aquatic Binder is a water-based, 1k component and a medium-viscosity binder. It will act as a binder that fuses the pebbles to create a seamless surface finishing. This product is suitable for indoor and outdoor wall system.

COLOUR CHART



**BLACK
301**



**ASSORTED
GREEN 302**



**MAROON
303**



**GRANITE
GREY 304**



**GREY
305**



**CORN YELLOW
306**



**BEIGE YELLOW
307**



**ANTIQUE
PINK 308**

2.1.2 EPICPAV PEBBLES

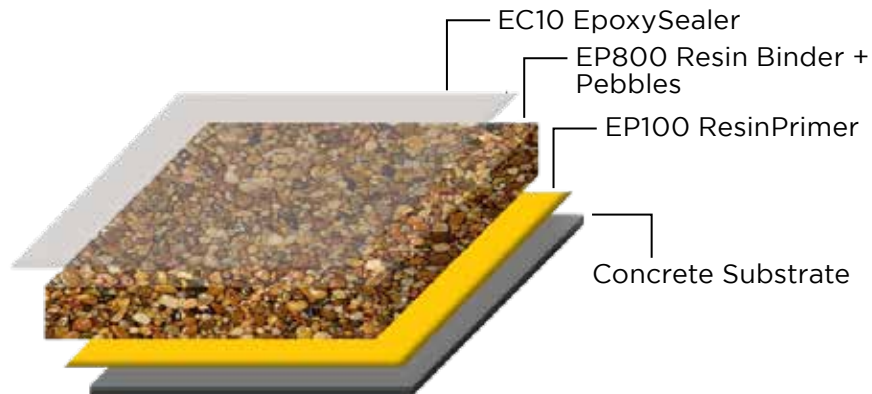
MASTERPAV EPICPAV Pebbles is a highly popular decorative flooring system offering a wide choice of textures and is available in many natural beautiful color pebbles fused to form a seamless surface with specially formulated, clear, and high-quality epoxy resins. EPICPAV Pebbles consists of a complete packaging for EP100 Resin Primer, EP800 Resin Binder and a bag of pebbles (#3 or #5). EPICPAV Pebbles system is suitable to be used indoors.



RECOMMENDED APPLICATION AREA

- Restaurants
- Showrooms
- Offices
- Cafeterias
- Recreation room
- Residential house

SYSTEM INFORMATION



REFER TO PRODUCT



MASTERPAV COLOUR PEBBLES

MASTERPAV colour pebbles is an irregular rounded stone aggregates specially selected for use in cement-bound and resin bonded surfacing system. Available in variety of vibrant tones that is highly durable and resistant to weathering, erosion and crack making them ideal for both residential and commercial decorative projects.



MASTERPAV EP800 RESIN BINDER

MASTERPAV EP800 Resin Binder is a solvent free, two-component, medium-viscosity epoxy binder. It is used in decorative resin systems. MASTERPAV EP800 resin binder functions as a binder that fuses quartz and colour pebbles to create a seamless surface. Intended exclusively for indoor use.



MASTERPAV EP100 RESIN PRIMER

MASTERPAV EP100 Resin Primer is a solvent based, two-component, low-viscosity epoxy primer. It is used in decorative resin systems. When applied over concrete substrates the primer penetrates deeply. Strictly for indoor use only.

COLOUR CHART



**BLACK
501**



**ASSORTED
GREEN 502**



**MAROON
503**



**GRANITE
GREY 504**



**GREY
505**



**CORN YELLOW
506**



**BEIGE YELLOW
507**



**ANTIQUE
PINK 508**

2.1.3 PURITYPAV PEBBLES

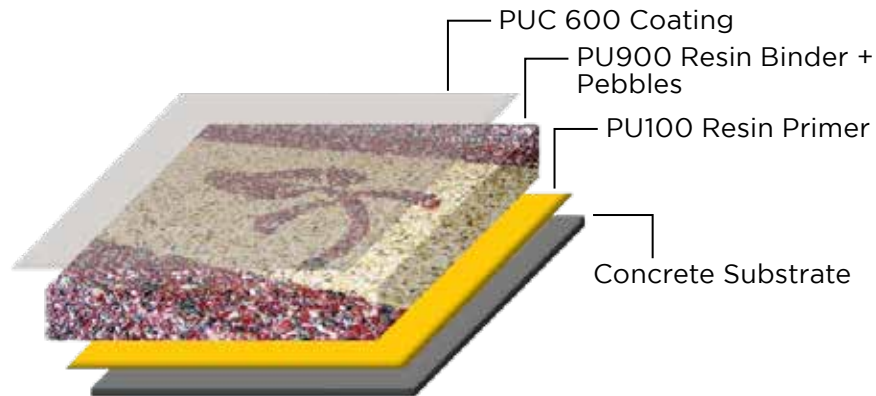
MASTERPAV PURITYPAV Pebbles is a widely used decorative flooring system that offers a variety of textures and comes in an array of naturally beautiful pebble colors. These pebbles are bonded together with specially formulated, high-quality, and transparent polyurethane resins, creating a durable and visually appealing surface. The PURITYPAV Pebbles system includes a complete set consisting of PU100 Resin Primer, PU900 Resin Binder, and a bag of pebbles (#3 or #5). Designed for outdoor use, this system provides a stylish and long-lasting flooring solution.



RECOMMENDED APPLICATION AREA

- Restaurants
- Showrooms
- Offices
- Cafeterias
- Recreation room
- Residential house

SYSTEM INFORMATION



REFER TO PRODUCT



MASTERPAV COLOUR PEBBLES

MASTERPAV colour pebbles is an irregular rounded stone aggregates specially selected for use in cement-bound and resin bonded surfacing system. Available in variety of vibrant tones that is highly durable and resistant to weathering, erosion and crack making them ideal for both residential and commercial decorative projects.



MASTERPAV PU900 RESIN BINDER

MASTERPAV PU900 Resin Binder is a solvent-based, two-component, medium-viscosity polyurethane binder. It is specially designed to be use in decorative outdoor pebbles resin systems. MASTERPAV PU900 Resin Binder functions as a binder that fuses colour pebbles to create a seamless surface. This product may be use for indoor and outdoor application.



MASTERPAV PU100 RESIN PRIMER

MASTERPAV PU100 Resin Primer is a solvent-based, two-component, low-viscosity polyurethane-based resin. MASTERPAV PU100 Resin Primer functions as a primer that priming the surface to enhance the bonding strength between concrete substrate for MASTERPAV Puritypav System. This product is suitable for indoor and outdoor application.

COLOUR CHART



BLACK



ASSORTED GREEN



MAROON



GRANITE GREY



GREY



CORN YELLOW



BEIGE YELLOW



ANTIQUE PINK

2.2 MASTERPAV RESIN QUARTZ

2.2.1 EPICPAV QUARTZ

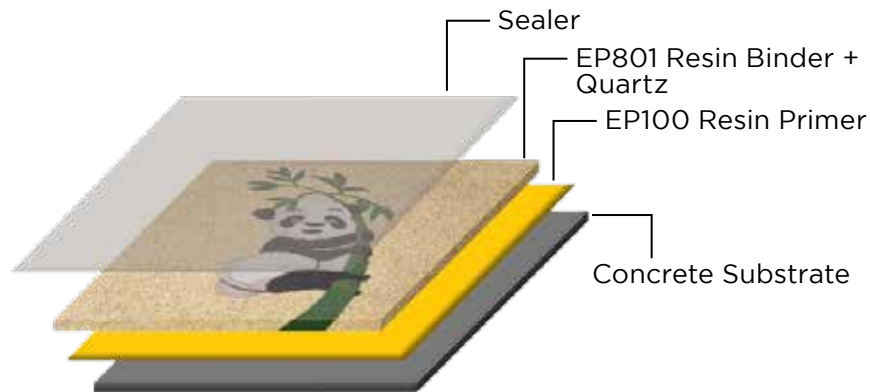
MASTERPAV EPICPAV Quartz is a highly popular decorative flooring system offering a wide choice of textures. It is available in many natural beautiful colour quartz fused to form a seamless surface with specially formulated, clear, and high-quality epoxy resins. EPICPAV Quartz consists of a complete packaging for EP100 Resin Primer, EP801 Resin Binder and a bag of quartz.



RECOMMENDED APPLICATION AREA

- Restaurants
- Showrooms
- Offices
- Cafeterias
- Recreation room
- Residential house

SYSTEM INFORMATION



REFER TO PRODUCT



MASTERPAV COLOUR QUARTZ

MASTERPAV Colour Quartz is natural quartz-based aggregates engineered for cement-bound and resin bonded surfacing system. Available in variety of vibrant tones that is highly durable and UV stable making it ideal for both decorative and functional application.



MASTERPAV EP801 RESIN BINDER

MASTERPAV EP801 Resin Binder is a solvent free, two-component, medium-viscosity epoxy binder. It is used in decorative resin systems. MASTERPAV EP801 resin binder functions as a binder that fuses quartz and colour pebbles to create a seamless surface. Intended exclusively for indoor use.



MASTERPAV EP100 RESIN PRIMER

MASTERPAV EP100 Resin Primer is a solvent based, two-component, low-viscosity epoxy primer. It is used in decorative resin systems. When applied over concrete substrates the primer penetrates deeply. Strictly for indoor use only.

COLOUR CHART



101
WHITE



102
BLACK



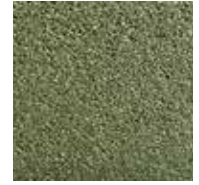
103
CHILI RED



104
LIGHT GREY



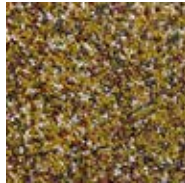
105
YELLOW



106
GREEN



107 WHITE
GRANITE



108 DESSERT
YELLOW



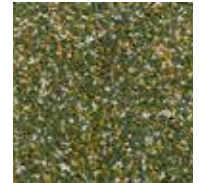
109 FOREST
GREEN



110
PASKAL GREY



111
BRICK RED



112
BAMBOO LEAF

2.2.2 PURITYPAV QUARTZ SYSTEM

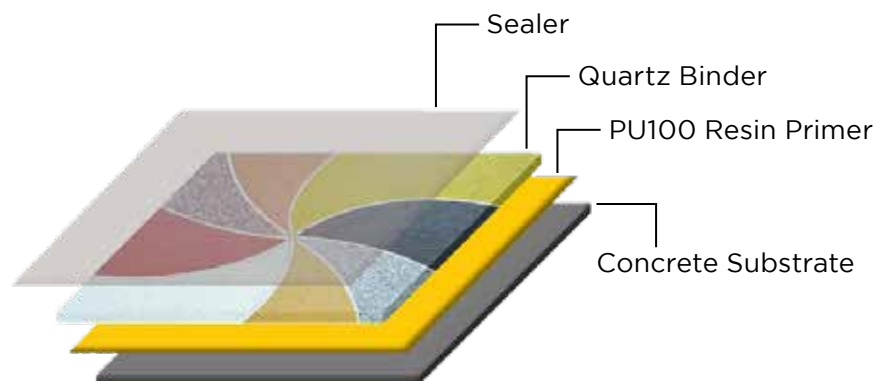
MASTERPAV PURITYPAV Quartz System is widely used decorative flooring system that offers a variety of textures. It features a selection of naturally vibrant quartz colors, bound together with specially formulated, high-quality and transparent polyurethane resins to create a durable and visually appealing surface. The Puritypav Quartz system includes a complete set comprising PU100 Resin Primer, 3k PU900 Resin Binder and a bag of quartz.



RECOMMENDED APPLICATION AREA

- Restaurants
- Showrooms
- Offices
- Cafeterias
- Recreation room
- Residential house

SYSTEM INFORMATION



REFER TO PRODUCT



MASTERPAV COLOUR QUARTZ

MASTERPAV Colour Quartz is natural quartz-based aggregates coated with variation type of unique colour to give an aesthetic and rich like finishing for resin bonded surfacing system. Available in variety of vibrant tones that is highly durable, UV stable while delivering water-repellent finishing. It is ideal for both decorative and functional application.



MASTERPAV QUARTZ BINDER

MASTERPAV Quartz Binder is a solvent-based, 3-component polyurethane binder specially formulated for use in outdoor quartz resin systems. It consists of a unique combination of PU900 Part A, PU900 Part B, and Enhancer Part C, providing excellent workability and good bonding strength to fuse colored quartz aggregates into a durable, seamless surface.

This product is suitable for both indoor and outdoor applications.



MASTERPAV PU100 RESIN PRIMER

MASTERPAV PU100 Resin Primer is a solvent-based, two-component, low-viscosity polyurethane-based resin. MASTERPAV PU100 Resin Primer functions as a primer that priming the surface to enhance the bonding strength between concrete substrate for MASTERPAV Puritypav System. This product is suitable for indoor and outdoor application.

COLOUR CHART



101
WHITE



102
BLACK



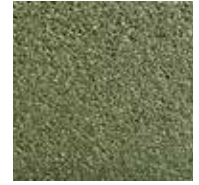
103
CHILI RED



104
LIGHT GREY



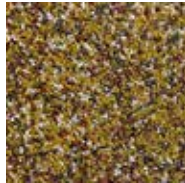
105
YELLOW



106
GREEN



107 WHITE
GRANITE



108 DESERT
YELLOW



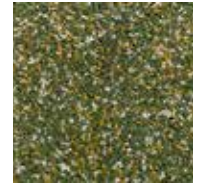
109 FOREST
GREEN



110
PASKAL GREY



111
BRICK RED



112
BAMBOO LEAF

3.0 DECORATIVE MICRO OVERLAY SYSTEM

MASTERPAV Decorative Micro Overlay System is a polymer-modified cementitious system that is specifically designed to enhance the appearance of both interior and exterior spaces. The system is designed to be as thin as 3mm. Create a seamless surface with this highly durable and versatile system to elevate the visual appeal of the surrounding spaces.

3.1 MASTERPAV ET100 EXTERIOR TEXTURE

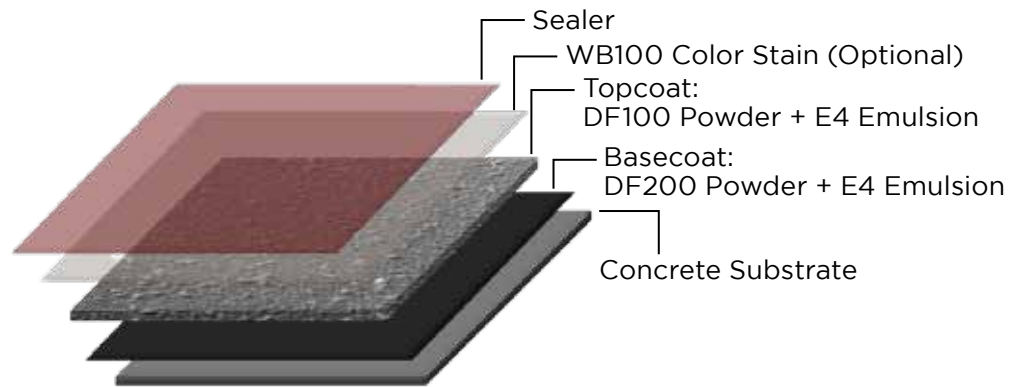
MASTERPAV ET100 Exterior Texture is a polymer-modified cementitious mixture (PMC) specifically designed for both interior and exterior flooring applications. This system is composed of a coloured dry mix and a polymer emulsion. This product is ideal for resurfacing both old and new concrete floors, including stamped concrete surfaces. This is a spray-on system. MASTERPAV ET100 Exterior Texture is not limited to floors; it can also be used to cover non-cementitious vertical surfaces such as plasterboards, and plywood.



RECOMMENDED APPLICATION AREA

- Shopping complex
- Office floor
- Showroom
- Courtyards
- Car porch
- Patios

SYSTEM INFORMATION



REFER TO PRODUCT



MASTERPAV DF200 BASECOAT DRYMIX

MASTERPAV DF200 Basecoat is polymer modified cementitious mixture (PMC) design for interior and exterior floor. It is a 2 component system that consists of powder and an emulsion. It is smooth and flat finishing which suitable for resurfacing old and new concrete floor.



MASTERPAV DF100 RESURFACING DRYMIX

Masterpav DF100 Resurfacing Drymix is a specially formulated polymer modified cementitious thin coating. It can also be sprayed to provide better skid resistance flooring. Application of stencils or filament tape prior troweling or spraying can be done to further provide different and unique floor designs.



MASTERPAV E4 EMULSION

MASTERPAV Emulsion E4 is binder to be used in polymer modified cementitious mixture (PMC), Rejuvenate RJ500 and Exterior ET100.



MASTERPAV WB100 COLOR STAIN

MASTERPAV WB 100 Color Stain is a water-based stain that is specifically designed to be non-reactive and semi-transparent. It has the ability to penetrate and color most cementitious surfaces. Applying it to these surfaces creates a dual-tone effect or serves as a secondary colorant.



MASTERPAV AS40 HEAVY DUTY SEALER

MASTERPAV AS40 Heavy Duty Acrylic Sealer is a solvent based clear finish which creates a wet look seal for the concrete flooring. It is highly advised to apply by roller for an even finishing. It dries fast and imparts onto the concrete surfaces a gloss finish and good protection from surface staining.



HOPPER GUN



AIR COMPRESSOR
*FOR REFERENCE ONLY



**12MM FILAMENT
TAPE/ STENCIL**

COLOUR CHART



BUTTER MILK
G2-1



PEACH
G2-3



TERRACOTA
G1-3



CISCO RED
G1-4



**CHOCOLATE
BROWN**
G1-5



ASH
G1-6



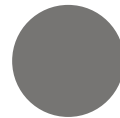
CEDAR
G2-4



BEIGE
G2-2



LIGHT GREY
G2-3



SILVER GREY
G1-2



CLOVER
G3-1



**GUN METAL
GREY**
G2-6

Note:

The actual colour of the product may differ slightly from the images shown due to lighting conditions, screen resolution, and inherent colour variations. For the most accurate colour representation, please refer to physical samples.

3.2 MASTERPAV RJ500 REJUVENATE

MASTERPAV RJ500 Rejuvenate System is a two-part polymer modified cementitious mixture (PMC) used to resurface old and new concrete for durable aesthetic performance. It is specially design to be sprayed like a thin coat by hoppergun to rejuvenate existing stamped concrete or plain concrete. The original stamped pattern is not affected by rejuvenate materials. The system comprises of a specially formulated liquid polymer (MASTERPAV E4 Emulsion) and a cementitious powder (MASTERPAV DF500 Spraycoat drymix) with variation of colour. Dual tone effect can be achieved by staining with secondary colorant using hand pump sprayer or by using roller or by brush.



BEFORE

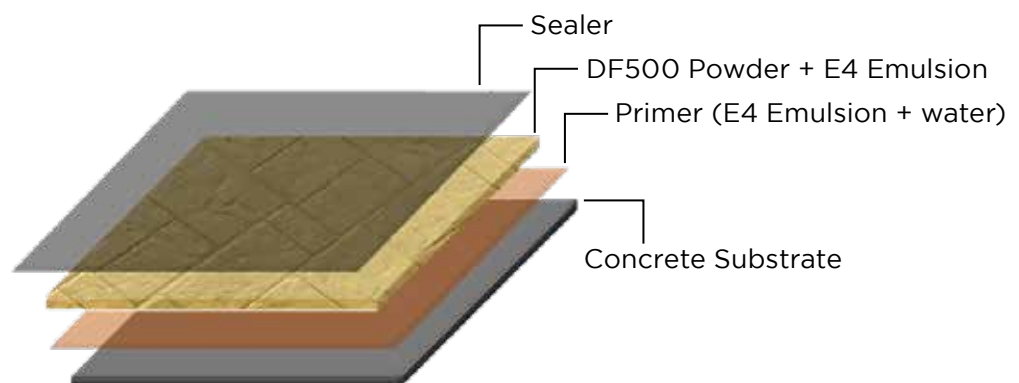


AFTER

RECOMMENDED APPLICATION AREA

- Stamped concrete
- Plain concrete

SYSTEM INFORMATION



REFER TO PRODUCT



MASTERPAV DF500 SPRAYCOAT DRYMIX

MASTERPAV DF500 is a two-part polymer modified cementations mixture (PMC) used to resurface old and new concrete for durable aesthetic performance. It is specially design to be sprayed like a thin coat by hoppergun to rejuvenate existing stamped concrete or plain concrete.



MASTERPAV WB100 COLOR STAIN

MASTERPAV WB 100 Color Stain is a water-based stain that is specifically designed to be non-reactive and semi-transparent. It has the ability to penetrate and color most cementitious surfaces. Applying it to these surfaces creates a dual-tone effect or serves as a secondary colorant.



MASTERPAV AS3.0 ANTI-SLIP SEALER

MASTERPAV Slip Resistant Acrylic Sealer AS3.0 is a solvent-based clear finish which dries fast and imparts low gloss, extra hard and durable, good water resistant, UV stability, and good protection to concrete surfaces. It is also pre-blend with special additives for slip resistant properties.



MASTERPAV E4 EMULSION

MASTERPAV Emulsion E4 is binder to be used in polymer modified cementitious mixture (PMC), Rejuvenate RJ500 and Exterior ET100.



HOPPER GUN



AIR COMPRESSOR *FOR REFERENCE ONLY

COLOUR CHART



Note:
The actual colour of the product may differ slightly from the images shown due to lighting conditions, screen resolution, and inherent colour variations. For the most accurate colour representation, please refer to physical samples.

4.0 DECORATIVE CONCRETE COATING SYSTEM

MASTERPAV Decorative Concrete Coating System revitalise your concrete surfaces with decorative coatings that enhance colour, texture, and design, elevating the aesthetic appeal of any space. Decorative concrete coatings create a robust protective layer, enhancing the durability and longevity of the concrete floor. The coating also safeguard concrete floors against spills, stains, and scratches, preserving their quality for years ahead.

4.1 MASTERPAV ROLL-ON EPOXY

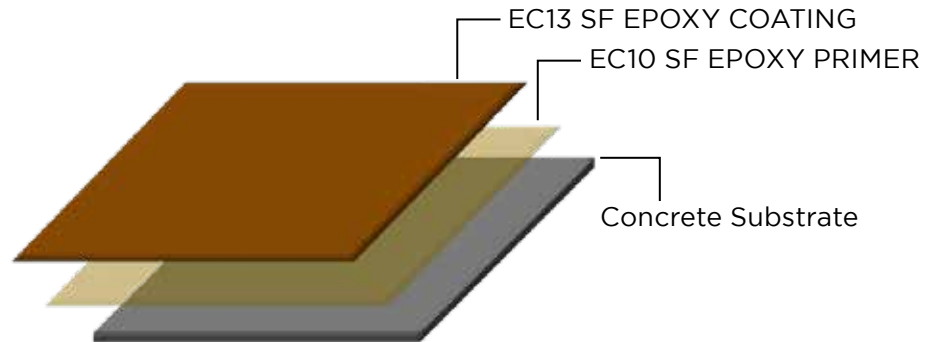
MASTERPAV Roll-On Epoxy System is a solvent-free epoxy coating system suitable for rolling applications. It is to be used as a thin topping or broadcast coat on a primed surface. The system comprises MASTERPAV EC10 SF Epoxy Primer as an undercoat and MASTERPAV EC13 SF Epoxy Coating as a finish coat that comes in a wide range of attractive colours. It is ideal for DIY floor projects.



RECOMMENDED APPLICATION AREA

- Industrial and commercial floors
- Food processing factories
- Electronic and electrical factories
- Clean rooms
- Garage floors

SYSTEM INFORMATION



REFER TO PRODUCT



MASTERPAV EC10 SF EPOXY PRIMER

MASTERPAV EC10 is a solvent-free, two-component, low-viscosity epoxy primer. When applied over concrete surfaces MASTERPAV EC10 penetrates and enhance the surface to provide better adhesion. Strictly for indoor use only.



MASTERPAV EC13 SF EPOXY COATING

MASTERPAV EC13 SF Epoxy Coating is a pigmented two component solvent-free epoxy coating with low viscosity. It is designed to use as a finished coat on prepared and primed concrete floor in medium to heavy duty industrial environment. The coating can also be applied to provide a nonslip texture in combination with non-slip aggregates.

COLOUR CHART



Note:
The actual colour of the product may differ slightly from the images shown due to lighting conditions, screen resolution, and inherent colour variations. For the most accurate colour representation, please refer to physical samples.

4.2 MASTERPAV SELF-LEVELLING EPOXY

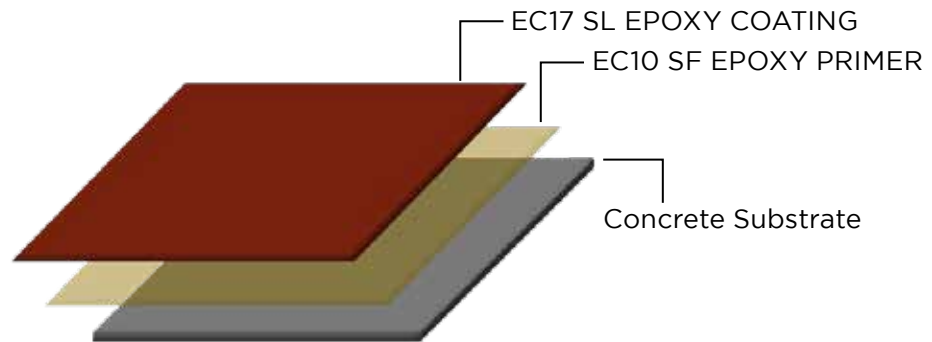
MASTERPAV Self-Levelling Epoxy System is a seamless and high gloss solvent-free epoxy coating system designed for indoor flooring application. The system comprises MASTERPAV EC10 SF Epoxy Primer as an undercoat and MASTERPAV EC17 SL Epoxy Coating as a finished coat that comes in various attractive colours. It is ideal for medium to heavy industrial environments as well as DIY floor projects.



RECOMMENDED APPLICATION AREA

- Industrial and commercial floors
- Food processing factories
- Electronic and electrical factories
- Clean rooms
- Garage floors

SYSTEM INFORMATION



REFER TO PRODUCT



MASTERPAV EC10 SF EPOXY PRIMER

MASTERPAV EC10 is a solvent-free, two-component, low-viscosity epoxy primer. When applied over concrete surfaces MASTERPAV EC10 penetrates and enhance the surface to provide better adhesion. Strictly for indoor use only.



MASTERPAV EC17 SL EPOXY COATING

MASTERPAV EC17 Self-Levelling Epoxy is a pigmented two component solvent free epoxy coating with low viscosity. It is to be used on prepared and primed concrete for medium to heavy duty application that provides a high gloss, seamless, hygienic surface and durable. Strictly for indoor use only.

COLOUR CHART



MISTY GREY
EP01



EX-GREY
EP02



BUTTERMILK
EP03



BRIGHT BLUE
EP04



FRESH BLUE
EP05



WHITE
EP06



DARK GREEN
EP07



EVERGREEN
EP08

Note:

The actual colour of the product may differ slightly from the images shown due to lighting conditions, screen resolution, and inherent colour variations. For the most accurate colour representation, please refer to physical samples.

4.3 MASTERPAV METALLIC EPOXY

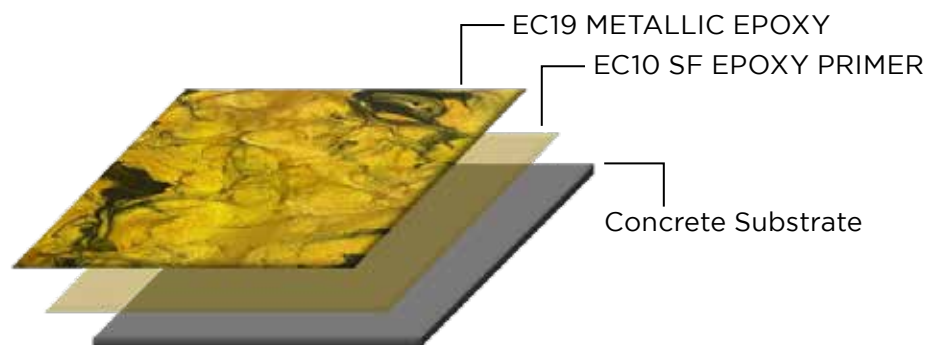
MASTERPAV Metallic Epoxy System is designed to provide a stunning color brilliance with marble-effect finish. Depending on the desired finish, different unique design can be created by manipulation of the application technique. The durability, color variation and customizability make them a sought-after choice for flooring and countertop coating.



RECOMMENDED APPLICATION AREA

- Exhibition hall
- Hotel Lobbies & entryways
- Residential & commercial floor
- Offices
- Restaurants
- Garage Floors

SYSTEM INFORMATION



REFER TO PRODUCT



MASTERPAV EC10 SF EPOXY PRIMER

MASTERPAV EC10 is a solvent-free, two-component, low-viscosity epoxy primer. When applied over concrete surfaces MASTERPAV EC10 penetrates and enhance the surface to provide better adhesion. Strictly for indoor use only.



MASTERPAV EC19 SF METALLIC EPOXY COATING

MASTERPAV Metallic Epoxy EC19 is a clear three-component, 100% solid solvent-free epoxy decorative coating. When use with our MASTERPAV Metallic pigments, it provides luxury decorative finish with extraordinary glittering and marble effect. It is specifically designed for application over concrete floors and countertops.

COLOUR CHART



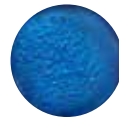
SILK WHITE



PEARL BLACK



BRONZE



OCEAN BLUE



RUSH GOLD



SILVER GREY

Note:

The actual colour of the product may differ slightly from the images shown due to lighting conditions, screen resolution, and inherent colour variations. For the most accurate colour representation, please refer to physical samples.

5.0 CONCRETE SEALER SERIES

5.1 MASTERPAV AS20 ACRYLIC SEALER PRIMER

MASTERPAV AS20 Acrylic Sealer Primer is a solvent based clear finish which prepares the surface to receive the top coat finishing. It is highly advised to apply MASTERPAV AS20 by roller for an even finishing. It dries fast and absorb into the concrete surface. It could be coated on interior and exterior concrete imprint surfaces, pebble floors, slate and other concrete flooring materials.

It is important to ensure that the surface receiving the MASTERPAV AS20 is dry, clean and free from dust prior application to ensure maximum adhesion.



1 LITER



5 LITER



20 LITER

BENEFITS

- Prepare the surface for top coat
- Water resistant
- UV stable
- Easy to clean
- Colour enhancing

PRODUCT INFORMATION

Packaging : 1 liter, 5 liter, 20 liter
Consumption : 3.5 - 4 sq mtr per liter
Shelf life : 12 months if kept sealed and dry

Note: Rate of consumption depends on the substrate porosity and texture.

5.2 MASTERPAV AS28 GLOSS ACRYLIC SEALER

MASTERPAV AS28 Gloss Acrylic Sealer is a solvent based clear finish which creates a wet look seal for the concrete flooring. It is highly advised to apply MASTERPAV AS28 by roller for an even finishing. It dries fast and imparts onto the concrete surfaces a gloss finish and good protection from surface staining. It could be coated on interior and exterior concrete imprint surfaces, pebble floors, slate and other concrete flooring materials.

It is important to ensure that the surface receiving the MASTERPAV AS28 is dry, clean and free from dust prior application to ensure maximum adhesion.



1 LITER



5 LITER



20 LITER

BENEFITS

- Gloss
- Water resistant
- UV stable
- Easy to clean
- Colour enhancing

PRODUCT INFORMATION

Packaging : 1 liter, 5 liter, 20 liter

Consumption : 4 - 5 sq mtr per liter

Shelf life : 12 months if kept sealed and dry

Note: Rate of consumption depends on the substrate porosity and texture.

5.3 MASTERPAV AS40 HEAVY DUTY ACRYLIC SEALER

MASTERPAV AS40 Heavy Duty Acrylic Sealer is a solvent based clear finish which creates a wet look seal for the concrete flooring. It is highly advised to apply MASTERPAV AS40 by roller for an even finishing. It dries fast and imparts onto the concrete surfaces a gloss finish and good protection from surface staining. It could be coated on interior and exterior concrete imprint surfaces, pebble floors, slate and other concrete flooring materials.

It is important to ensure that the surface receiving the MASTERPAV AS40 is dry, clean and free from dust prior application to ensure maximum adhesion.



1 LITER



5 LITER



20 LITER

BENEFITS

- Heavy duty use
- Water resistant
- UV stable
- Easy to clean
- Colour enhancing

PRODUCT INFORMATION

Packaging : 1 liter, 5 liter, 20 liter

Consumption : 4 - 5 sq mtr per liter

Shelf life : 12 months if kept sealed and dry

Note: Rate of consumption depends on the substrate porosity and texture.

5.4 MASTERPAV TS2.5 TINTED SEALER

MASTERPAV TS2.5 Tinted Sealer is a pigmented solvent based coating. It is highly advised to apply MASTERPAV TS2.5 by roller for an even finishing. It dries fast and imparts onto the concrete surfaces with a pigmented semi gloss finish and good protection from surface staining. It is important to ensure that the surface receiving the MASTERPAV TS2.5 is dry, clean and free from dust prior application to ensure maximum adhesion.

It is available in more than 40 colours, similar to the M300. Customization of colours could also be done under the request of customers (with MOQ applied).



5 LITER



20 LITER

BENEFITS

- Semi gloss
- Pigmented
- Water resistant
- UV stable
- Wide range of colours

PRODUCT INFORMATION

Packaging : 5 liter, 20 liter

Consumption : 4 - 5 sq mtr per liter

Shelf life : 12 months if kept sealed and dry

Note: Rate of consumption depends on the substrate porosity and texture.

BEFORE & AFTER APPLICATION



Before



After

5.5 MASTERPAV AS23 MATTE ACRYLIC SEALER

MASTERPAV AS23 Matte Acrylic Sealer is a solvent based clear finish which creates a wet look seal for the concrete flooring. It is highly advised to apply MASTERPAV AS23 by roller for an even finishing. It dries fast and imparts onto the concrete surfaces a matte finish and good protection from surface staining. It could be coated on interior and exterior concrete imprint surfaces, pebble floors, slate and other concrete flooring materials.

It is important to ensure that the surface receiving the MASTERPAV AS23 is dry, clean and free from dust prior application to ensure maximum adhesion.



1 LITER



5 LITER



20 LITER

BENEFITS

- Matte appearance
- Water resistant
- UV stable
- Easy to clean
- Colour enhancing

PRODUCT INFORMATION

Packaging : 1 liter, 5 liter, 20 liter

Consumption : 4 - 5 sq mtr per liter

Shelf life : 12 months if kept sealed and dry

Note: Rate of consumption depends on the substrate porosity and texture.

5.6 MASTERPAV AS3.0 SLIP RESISTANT ACRYLIC SEALER

MASTERPAV AS3.0 Slip Resistant Acrylic Sealer is a solvent-based clear finish that dries fast and imparts low gloss, extra hard and durable, good water resistant, UV stability, and good protection to concrete surfaces. It is also pre-blend with special additives for slip-resistant properties.

AS3.0 Slip Resistant Acrylic Sealer is suitable for residential and commercial areas. It can be coated on interior and exterior concrete imprint surfaces, floor pebble finish; slate, and other concrete flooring materials.



1 LITER



5 LITER



20 LITER

BENEFITS

- Gloss level: Low gloss
- Slip Resistant properties: Hard, durable, and trafficable
- Good resistance to fungal, and alkali attacks, dust collection
- Resistant to weathering on exposure
- Good water-resistant, washable finish
- Enhance the color of the substrates
- Protection level: High

PRODUCT INFORMATION

Packaging : 1 liter, 5 liter, 20 liter

Consumption : 4 - 5 sq mtr per liter

Note: Rate of consumption depends on the substrate porosity and texture.

5.7 MASTERPAV WB5.0 WATER-BASED ACRYLIC SEALER

MASTERPAV WB5.0 Water-Based Acrylic Sealer is a water-based acrylic sealer that offers long-term durability and adequate protection against efflorescence. It offers good protection against mild chemicals to concrete surfaces. MASTERPAV WB5.0 is the ideal choice for both interior and exterior surfaces.



5 LITER



20 LITER

BENEFITS

- Satin looking sealer
- Low odor
- Adequate efflorescence resistance
- Good resistance against mild chemicals
- Durable and trafficable

PRODUCT INFORMATION

Packaging : 5Kg, 20Kg

Theoretical Coverage : 3-5 m²/Kg. Depends on substrate porosity and texture, and application method. Excessive build-up should be avoided.

BEFORE & AFTER APPLICATION



Before



After

5.8 MASTERPAV SX115 PENETRATING SEALER

MASTERPAV SX115 Penetrating Sealer is a non-filming deep penetrating solvent-based silane-siloxane water-repellent sealer. It is specially formulated to be clear, breathable, and water-repelling to protect concrete and masonry against the damaging effects of water intrusion.



5 LITER



20 LITER

BENEFITS

- High depth of penetration
- Rapid development of water repellency
- Breathable allows internal moisture to escape
- Will not alter surface appearance
- Reduce capillary water absorption

PRODUCT INFORMATION

Packaging : 4Kg, 16Kg

Theoretical Coverage : Smooth Concrete 1Kg/m²

BEFORE & AFTER APPLICATION



Before



After

6.0 CONCRETE COATING SERIES

6.1 MASTERPAV EC10 SF EPOXY PRIMER

MASTERPAV EC10 SF Epoxy Primer is a solvent-free, two-component, low-viscosity epoxy primer. When applied over concrete surfaces MASTERPAV EC10 SF Epoxy Primer penetrates and enhance the surface to provide increased wear resistance. Strictly for indoor use only.



BENEFITS

- Good penetration into the concrete surface
- Good resistance against mild chemicals
- Compatible with a wide range of topcoats
- No strong odor during application
- Environmentally friendly

PRODUCT INFORMATION

Packaging (Available in) :

- 4.5Kg Set (3.6Kg Part A; 0.9Kg Part B)
- 1Kg Set (0.8Kg Part A; 0.2Kg Part B)

Theoretical Coverage : Approx. 0.3 kg/m²

**Depends on substrate porosity and texture and application method*

BEFORE & AFTER APPLICATION



Before



After

6.2 MASTERPAV EC13 SF EPOXY COATING

MASTERPAV EC13 SF Epoxy Coating is a pigmented two component solvent-free epoxy coating with low viscosity. It is designed to use as a finished coat on prepared and primed concrete floor in medium to heavy duty industrial environment. The coating can also be applied to provide a nonslip texture in combination with non-slip aggregates.



BENEFITS

- Solvent-free, low odour
- High slip resistant surface when broadcasted
- Good mechanical & chemical resistance
- Seamless – prevents ingress of chemicals into the substrate and prevents bacterial growth
- Hygienic – provide easy to clean dust free surface
- Environmentally friendly
- Available in variety of colours

PRODUCT INFORMATION

Packaging (Available in) :

- 4.5Kg Set (3.6Kg Part A; 0.9Kg Part B)
- 22.5Kg Set (18Kg Part A; 4.5Kg Part B)

Theoretical Coverage : 0.3 - 0.5Kg/m²

BEFORE & AFTER APPLICATION



Before



After

6.3 MASTERPAV EC17 SL EPOXY COATING

MASTERPAV EC17 SL Epoxy Coating is a pigmented two component solvent free epoxy coating with low viscosity. It is to be used on prepared and primed concrete for medium to heavy duty application that provides a high gloss, seamless, hygienic surface and durable. Strictly for indoor use only.



BENEFITS

- Solvent-free, low odour
- Good mechanical & chemical resistance
- Seamless – prevents ingress of chemicals into the substrate and prevents bacterial growth
- Hygienic – provide easy to clean dust free surface
- Environmentally friendly
- Available in variety of colours

PRODUCT INFORMATION

Packaging (Available in) :

- 4Kg Set (3Kg Part A; 1Kg Part B)
- 20Kg Set (15Kg Part A; 5Kg Part B)

Theoretical Coverage : 2.5Kg/m²

BEFORE & AFTER APPLICATION



Before



After

6.4 MASTERPAV EC19 METALLIC EPOXY COATING

MASTERPAV EC19 Metallic Epoxy Coating is a clear three-component, 100% solid solvent-free epoxy decorative coating. When use with our MASTERPAV Metallic pigments, it provides luxury decorative finish with extraordinary glittering and marble effect. It is specifically designed for application over concrete floors and countertops.



BENEFITS

- Solvent-free, low odour
- Good mechanical & chemical resistance
- Seamless – prevents ingress of chemicals into the substrate and prevents bacterial growth
- Hygienic – provide easy to clean dust free surface
- Environmentally friendly
- Available in variety of colours

PRODUCT INFORMATION

Packaging (Available in) :

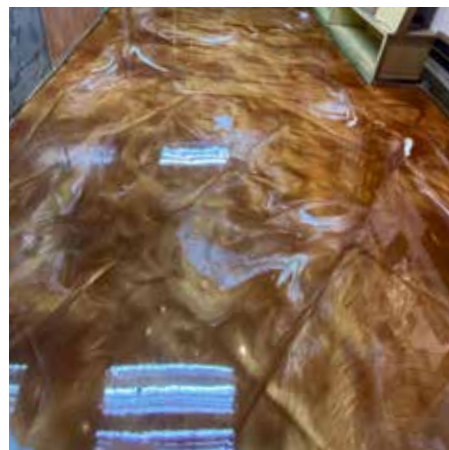
- 4Kg Set (3Kg Part A; 1Kg Part B) + 100g MASTERPAV Metallic (approx. 1.6m²)
- 20Kg Set (15Kg Part A; 5Kg Part B) + 500g MASTERPAV Metallic (approx. 8m²)

Theoretical Coverage : 2Kg/m²

BEFORE & AFTER APPLICATION



Before



After

6.5 MASTERPAV PUC600 GLOSS FINISH

MASTERPAV PUC600 Gloss Finish is a clear two-component solvent-based acrylic aliphatic polyurethane coating designed as a clear topcoat with excellent durability and UV stability with superior gloss finish. The product offers good protection against mild chemicals to concrete surfaces. MASTERPAV PUC600 is the ideal choice for both interior and exterior surfaces.



3.2 KG

BENEFITS

- High gloss
- UV-stable
- Hard wearing- good abrasion resistance
- Durable and trafficable
- Good resistance against mild chemicals

PRODUCT INFORMATION

Packaging : 3.2 Kg & 16 Kg

Theoretical coverage: Imprint concrete 6m²/kg/coat

BEFORE & AFTER APPLICATION



Before



After

7.0 SURFACE TREATMENTS

7.1 MASTERPAV AG120 BONDING COMPOUND

MASTERPAV AG120 Bonding Compound is a water-based polymer water-resistant bonding agent and mortar strengthening additives. MASTERPAV AG120 is a bonding agent for tile fixing mortar, concrete repair mortars, floor screeds, and bonding agent for new and old concrete.



10 LITER



20 LITER

BENEFITS

- Improves bond strength to fresh concrete to old concrete & toppings.
- Reduces cracking through increased mortar flexural strength
- Increase wear resistance
- Non-toxic, non-corrosive and non-flammable
- Easy to use

PRODUCT INFORMATION

Packaging : 10 liter, 20 liter

Consumption : 4 - 5 sq mtr per liter

Shelf life : 6 months if kept sealed and dry

Note: Rate of consumption depends on the substrate porosity and texture.

7.2 MASTERPAV AG180 BONDING COMPOUND

MASTERPAV AG180 Bonding Compound is a carboxylated styrene butadiene co-polymer. It is compatible with most hydraulic binders. This product is free from APEOs. AG180 can be used in both indoor and outdoor exposures, on concrete, steel, wood, guniting, thin section topping. Many be used as a plaster bond within 45- 60 minutes.



10 LITER



20 LITER

BENEFITS

- Improves bond strength to fresh concrete to old concrete & toppings.
- Reduces cracking through increased mortar flexural strength
- Increase wear resistance
- APEOs free

PRODUCT INFORMATION

Packaging : 10 liter, 20 liter

Consumption : 4 - 5 sq mtr per liter

Shelf life : 6 months if kept sealed and dry

Note: Rate of consumption depends on the substrate porosity and texture.

7.3 MASTERPAV NA5.4 MULTIPURPOSE FLOOR CLEANER

MASTERPAV NA5.4 Multipurpose Floor Cleaner is designed as an alkaline cleaner for deep cleaning of greasy dirt and to remove organic residues, dark marks, and oxidation, as well as to strip wax or old layers of wax or existing treatments. This product can be used on both indoor and outdoor surfaces. It can be used to wash interior and exterior concrete imprint surfaces, floor pebble finish; slate, and other concrete flooring materials.



10 LITER



20 LITER

BENEFITS

- A versatile product, suitable for use on different types of material
- Top-level cleaning action
- Effective on organic-based residues
- Quick and easy application

PRODUCT INFORMATION

Packaging : 10 liter, 20 liter

Consumption : 9 - 10 sq mtr per liter

Note: Rate of consumption depends on the substrate porosity and texture.

7.4 MASTERPAV CP9 CRACK REPAIR POWDER

MASTERPAV CP9 Crack Repair Powder consists of cement , synthetic resin and special formulated additives. Besides that, CP9 is available in both natural and colours. Customization of colours could also be done under the request of customers (with MOQ applied).



20 LITER

BENEFITS

- Cost effective
- Low maintenance
- Wide range of colours

PRODUCT INFORMATION

Packaging : 5Kg, 10Kg per bag
Consumption : 4m² / kg / mm
Shelf life : 6 months if kept sealed and dry

7.5 MASTERPAV EP501 PART A+B

MASTERPAV EP501 PART A+B is a low-viscosity, 2-pack solvent-less epoxy system. Specially formulated for crack repair in concrete.



0.5KG

BENEFITS

- Easy-to-use kit with a pourable consistency
- Good chemical - resistant to a wide range of acids, alkalis, oils, etc
- Excellent adhesion with concrete
- Low viscosity ~ high penetration
- Can be diluted with water or organic solvent

PRODUCT INFORMATION

Packaging : 0.5Kg/set

Note: Rate of consumption depends on the substrate porosity and texture.

7.6 MASTERPAV THINNER 101

MASTERPAV Thinner 101 is designed for cleaning and thinning many different types of compounds and resins such as acrylic, enamels, and polyurethanes. MASTERPAV Thinner 101 is a solvent-based thinner that can be used to improve the flow of a range of MASTERPAV sealers. Can also be used to remove concrete sealers or reemulsify a range of solvent base concrete sealer.



20 LITER

PRODUCT INFORMATION

Packaging : 20 Liter

Note: The rate of consumption depends on the substrate porosity and texture.

7.7 MASTERPAV SEALER REMOVAL 102

MASTERPAV Sealer Removal 102 is a viscous materials containing solvent mixture when applied on any coating surface can be cleared off after a short reaction time. The MASTERPAV Sealer Removal 102 may react with the coating surface, thus exposing the concrete or cement surface. The MASTERPAV Sealer Removal 102 like consistency ensures adequate contact to the surface and presents quick run off. The MASTERPAV Sealer Removal 102 is the best applied on any coating surface.



20 LITER

PRODUCT INFORMATION

Packaging : 20 Liter

Note: The rate of consumption depends on the substrate porosity and texture.

7.8 MASTERPAV W25 FLOOR WAX EMULSION

MASTERPAV W25 Floor Wax Emulsion is a water-based floor wax, specially formulated to protect and deliver shine finish that resist scuffing and daily wear. It can be applied by mopping down or high-speed burnishing. Ideal for regular maintenance.



1 LITRE



5 LITRE

BENEFITS

- Easy to use
- Protect against light scratches
- Sheen to gloss finish
- Good abrasion resistance

PRODUCT INFORMATION

Packaging : 1L, 5L & 20L

Theoretical coverage: 10m²/L/2coats (Terrazzo stone)

BEFORE & AFTER APPLICATION



Before



After

8.0 CONCRETE TOOLS

8.1 BULLNOSE EDGER 406

- Used to trowel a smooth finish to slab edges and produce a smooth face margin to textured.
- Size: L150mm x W100mm x D15mm



8.2 BULLNOSE EDGER 700

- Used to trowel a smooth finish to slab edges and produce a smooth face margin to textured.
- Size: W150mm x L230mm x R12mm x D24mm



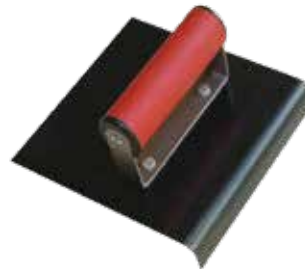
8.3 BULLNOSE EDGER 402S

- Used to trowel a smooth finish to slab edges and produce a smooth face margin to textured.
- Come in small and medium size



8.4 HAND EDGER 8302/8303

- Made of high quality blue steel; assembled with soft TRP handle and comfortable to hold.
- A concrete hand edger can be easily used to cut apart the concrete road and the baffle, creating a round curve on the road corner at the same time so as to help avoid damage to the road edge. It will highly improve the road appearance and construction quality as well as save time and labour.
- Size: W152mm x L102mm x R6.35mm x D10mm
- Size: W152mm x L152mm x R9.53mm x D13mm



8.5 HAND GROOVER V8202

- Used to can lay off large-scale and fuel-consuming road cutting machine, especially for small road construction projects.
- Size: L180mm x W110mm x D25mm



8.6 JAPANESE TROWEL

- Used to smooth the surface of concrete wall and floor.



8.7 POINTED TROWEL

- Steel pointed trowel for finishing concrete surfaces.



8.8 MAGNESIUM ROUND END HANDLE FLOAT

- Made of high strength magnesium alloy, light weight, high working efficiency, comfort able to use and durable.
- Two round ends, soft TPR handle, suitable for concrete construction.
- Size: 8511: 406mm x 79.4mm (16" x 3.125")
- Size: 8514: 305mm x 79.4mm (12" x 3.125")



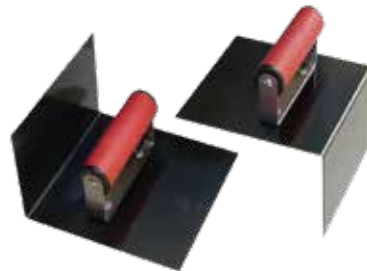
8.9 WALKING GROOVER 8209

- Easy to handle, a handle groover can lay off large-scale and fuel-consuming road cutting machine, especially for small road construction projects.
- Size : L180mm x W110mm x D25mm
- Handle: 2 x 1.83m aluminium



8.10 BLUE STEEL STEP TROWEL 8401/8402

- Used to create inner and outer corner of steps, easy to use, significantly improving the step appearance.
- Size : W152mm x L152mm x R3.18mm x D102mm



8.11 HIGH CARBONSTEEL SQUARE END TROWEL 8104

- Used to smooth the surface of concrete wall and floor.
- Size : 406mm x 102mm



8.12 TAMPER

- Designed to evenly distribute the moulds pressure.
- Base Materials: Polyurethane
- Excellent elasticity, wear resistance and durability.
- Steel handle



8.13 ORNAMENTAL TOOL, LEAF & SQUARE

- Forged and tempered for greater flexibility.
- Leaf and square ends
- Size: 8022: 9.53mm x 215.9mm (3/8" x 8-1/2")
- Size: 8023: 12.7mm x 215.9mm (1/2" x 8-1/2")



8.14 RIGID NYLON BROOM

- Bristles 0.7mm white and 1.0mm black (50cm x 80cm length).
- Used to make concrete floor rough texture



8.15 PEBBLE WASH BROOM

- Used to remove concrete slurry in pebble wash finishings.



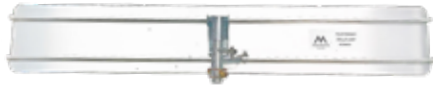
8.16 WALKING TROWEL

- For trowelling colour after bullfloating.
- For stamped concrete and stencilcrete application.
- To be used together with multiclip handle.



8.17 ALLUMINIUM BULLFLOAT

- For working colour into concrete surface for stamped concrete and stencilcrete application
- To be used together with Multiclip Handle



8.18 MULTICLIP HANDLE

- This handle universally used for aluminium bullfloat, walking trowel and rigid nylon broom.



8.19 HOPPER GUN

- Designed specially for DF100 Resurfacing application.
- Adjustable spray pattern.
(This will require compressor)



8.20 ABRASIVE BRICK

- Made of silicon carbide; fast method of removing form and mould marks or dressing down concrete work; with plastic handle securely fastened to the brick.
- Size: L152mm x W76mm x D25mm



8.21 FILAMENT TAPE

- Used to create a line design for DF100 Resurfacing spray on application.



8.22 SPIKED SHOE

- Made of import high-quality strong new PP materials, more durable than general spiked shoes, strong resistance to breaking; thickness is 6mm, SS nail length is 40mm which has done electroplating process. Enter the construction plant, leave no trace.
- Size: 300mm x 140mm

