

Baroona Youth Healing Place

Elders Engagement Package

AUGUST 2025



Overview

The Barooka Healing Centre redevelopment is moving forward, and we're excited to re-engage with you to discuss this important project for your community.

In 2022, we received Elders input on the design of the new Healing Centre. After a pause, the project has recommenced, and we want to ensure that the concept you supported then still reflects the community's vision today.

To do this, the project team will be facilitating an in-person engagement session at 12:30pm on Thursday, August 21 at the Family Services Kookaburra Room.

To help you prepare for the session, we've created this package which includes the previous concept designs for you to review. You'll also find answers to some questions you may have about the project. Please feel free to bring any additional questions to our session or reach out to the Njernda team directly.

What is included in this package?

- | | |
|---|---------------------|
| 1 | Design Concept |
| 2 | Siting Information |
| 3 | Questions & Answers |



What Themes & Principles were established in 2023?

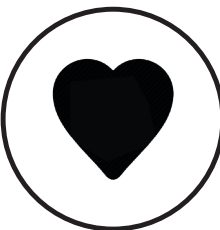
The Baroona Youth Healing Centre is a residential cultural healing place for young Aboriginal people who have had, or are vulnerable to, involvement with the justice system. The design principles aim to incorporate a holistic integration of support systems, management and design, driven by the needs of the Njernda community. These principles are underpinned by a model that highlights key themes that give young Aboriginal people strength in care. (Our Youth, Our Way Inquiry, AHV).

The themes & design principles that were established in the 2023 concept package were as follows:



CULTURALLY SENSITIVE PLACE-MAKING

We have a track record of creating culturally sensitive spaces that celebrate the communities that occupy them.



PRIDE OF PLACE/ SENSE OF BELONGING

We understand the importance of bringing communities and user groups on the design journey, resulting in ownership and pride in the final design.



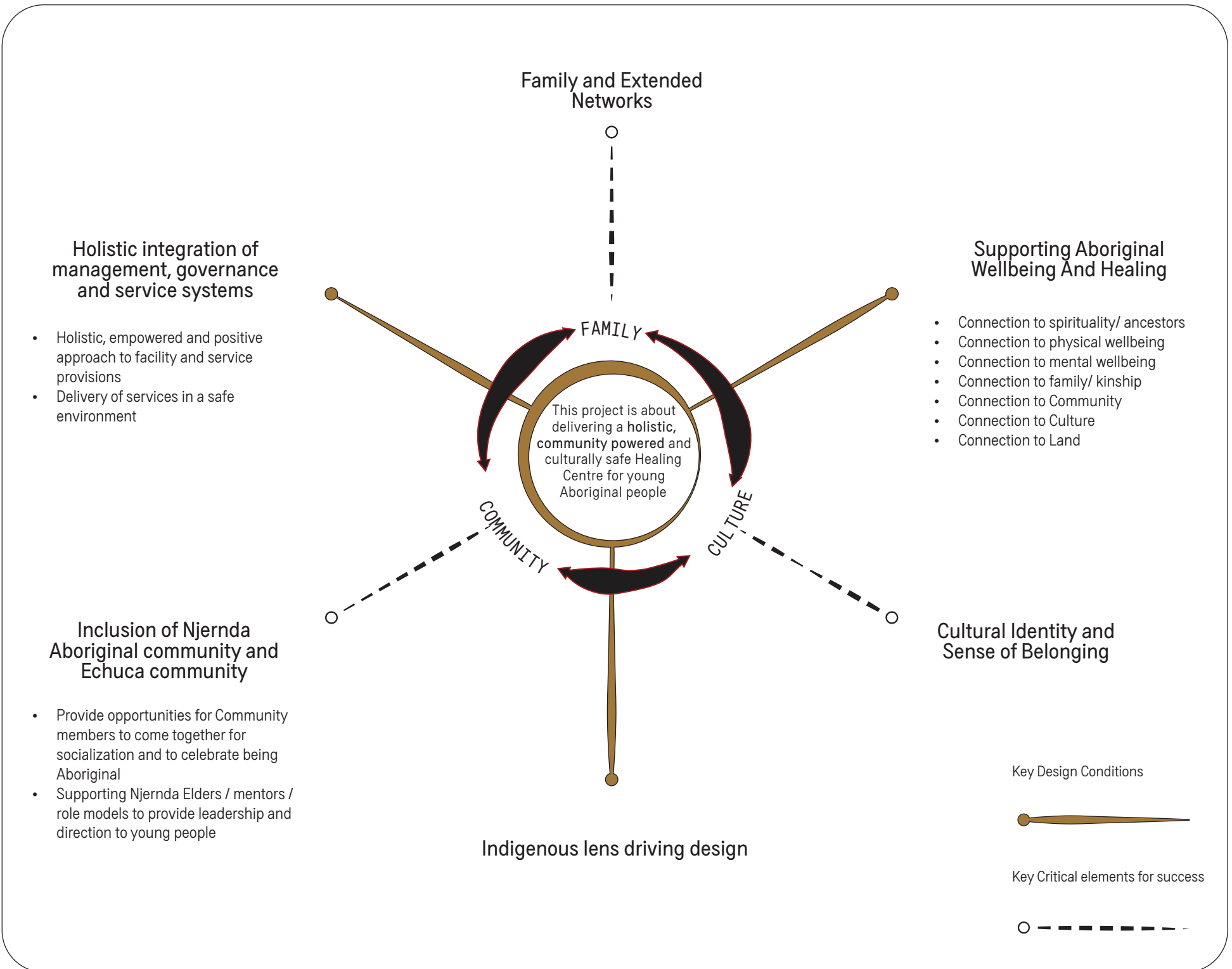
COMMUNITY ENGAGEMENT

We have extensive experience working and engaging with Community Groups and stakeholders to achieve desired outcomes for the project



HUMAN CENTRED DESIGN

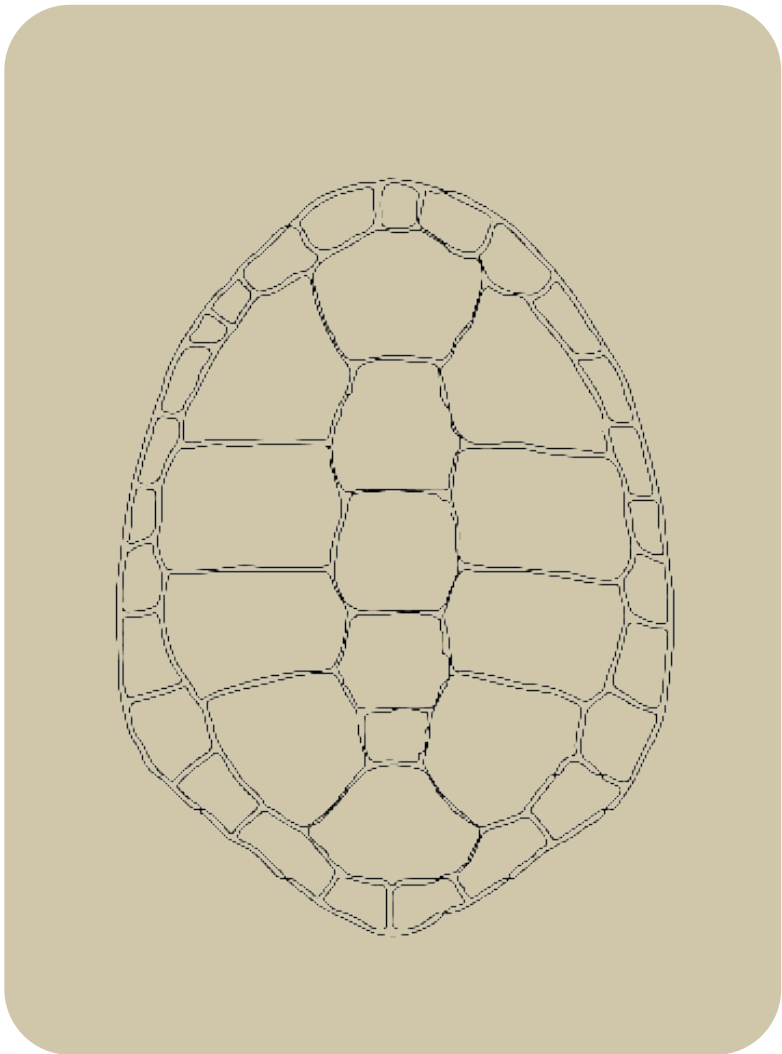
We believe the humans occupying the space come first when approaching design



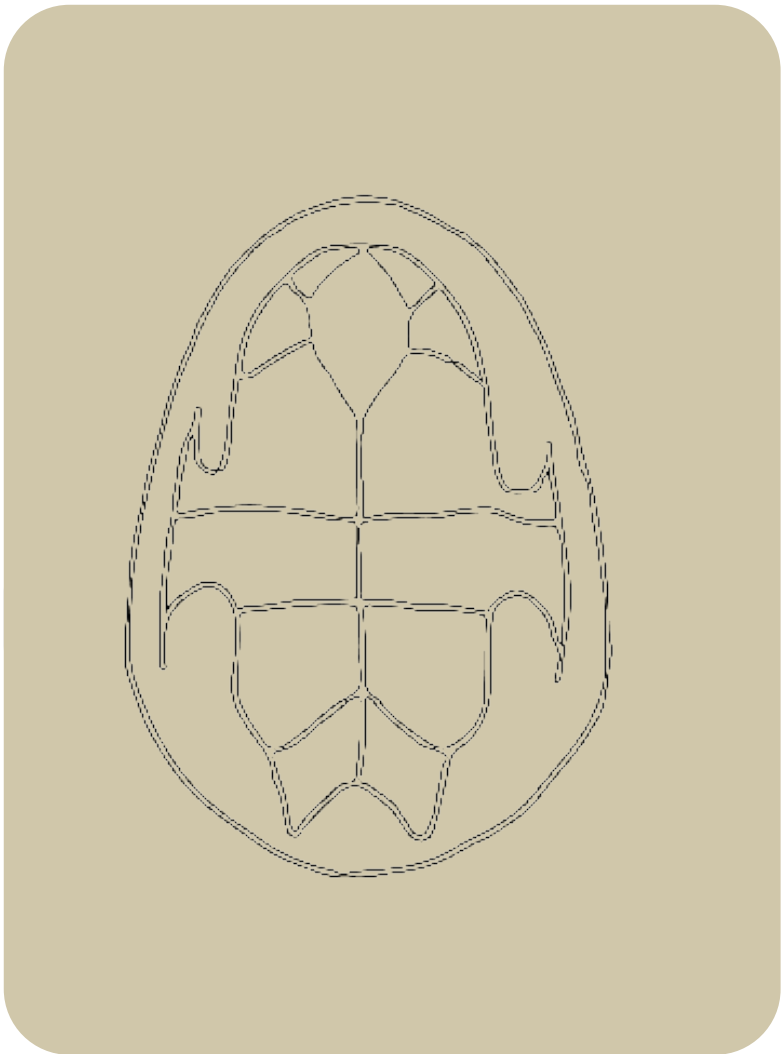
What was the supported Design Concept in 2023?

Design Concept: Bayadherra, the broad-shelled turtle (Yorta Yorta Totem)

We heard that the broad-shelled turtle holds deep significance as a totemic creature for the Yorta Yorta People. Affectionately known as 'Bayadherra,' it serves as a cherished provider, guide, and protector.



Scales on top shell



Scales on belly

Status: Endangered

Adult Size: Shell up to 48cm

Identification: Olive brown to very dark brown domed shell. Usually 6 central scales on top with wider scales at the head and near the tail. Long, muscular neck and a very flat head. Large feet and claws. Cannot tuck its head and neck fully into its shell. Belly white with no black markings. Largest freshwater turtle in Australia. Rarely seen.



What was the supported Design Concept in 2023?

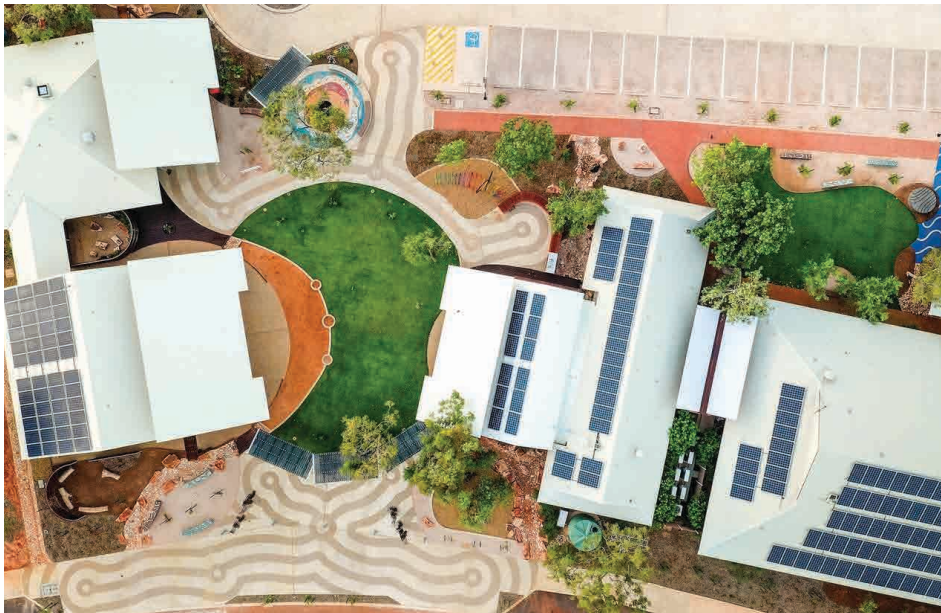
The previously supported design concept reflected the geometry of the 'Bayadherra' shell in its roof form.

Precedents



Gurriny Yealamucka Health and Wellbeing Centre
Architect: Coburn Architects

The landscape design has been developed with traditional owners to connect the healing water story to an outside yarning circle, native bush food and plants of cultural significance. The building acknowledges Guyula the Sea Hawk as an important protector of Yarrabah.



Liyan-ngan Nyirrwa Cultural Wellbeing Centre
Architect: Mudmap studio

MudMap Studio worked with eight Yawuru artists to coordinate the design and production of 14 public art pieces for the Centre. These pieces take pride of place in the landscape, to tell stories of Yawuru culture, people and place.



What was the supported Design Concept in 2023?

Precedents



Puntukurnu Aboriginal Medical Service Healthcare Hub

The courtyard holds artwork from 19 artists representing the 5 communities. Over 2000 local endemic plants were distributed to create a welcoming landscape. The courtyard forms the meeting place between administration spaces and the health clinic whilst enabling a visual connection with opportunities for interaction between management and the community.

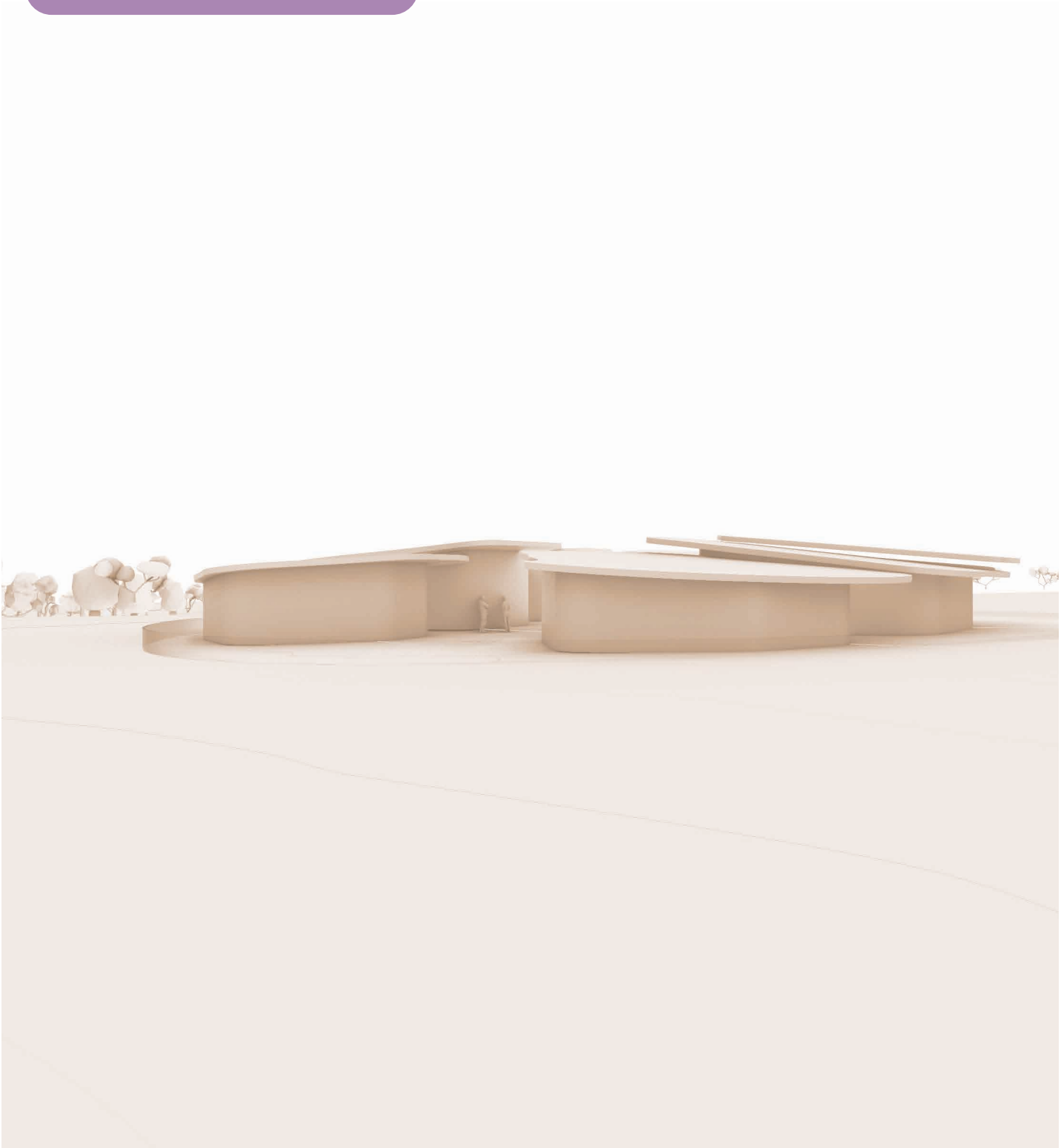


Fire Ring

Landscape architect: Studio Vulcan

Informal yarning circles and fire pits outside project boundary as informal gathering spaces suitable for outdoor education

2023 DESIGN CONCEPT IMAGE



What was the supported Design Concept in 2023?

Precedents



Liyan-ngan Nyirrwa Cultural Wellbeing Centre

Architect: Mudmap studio

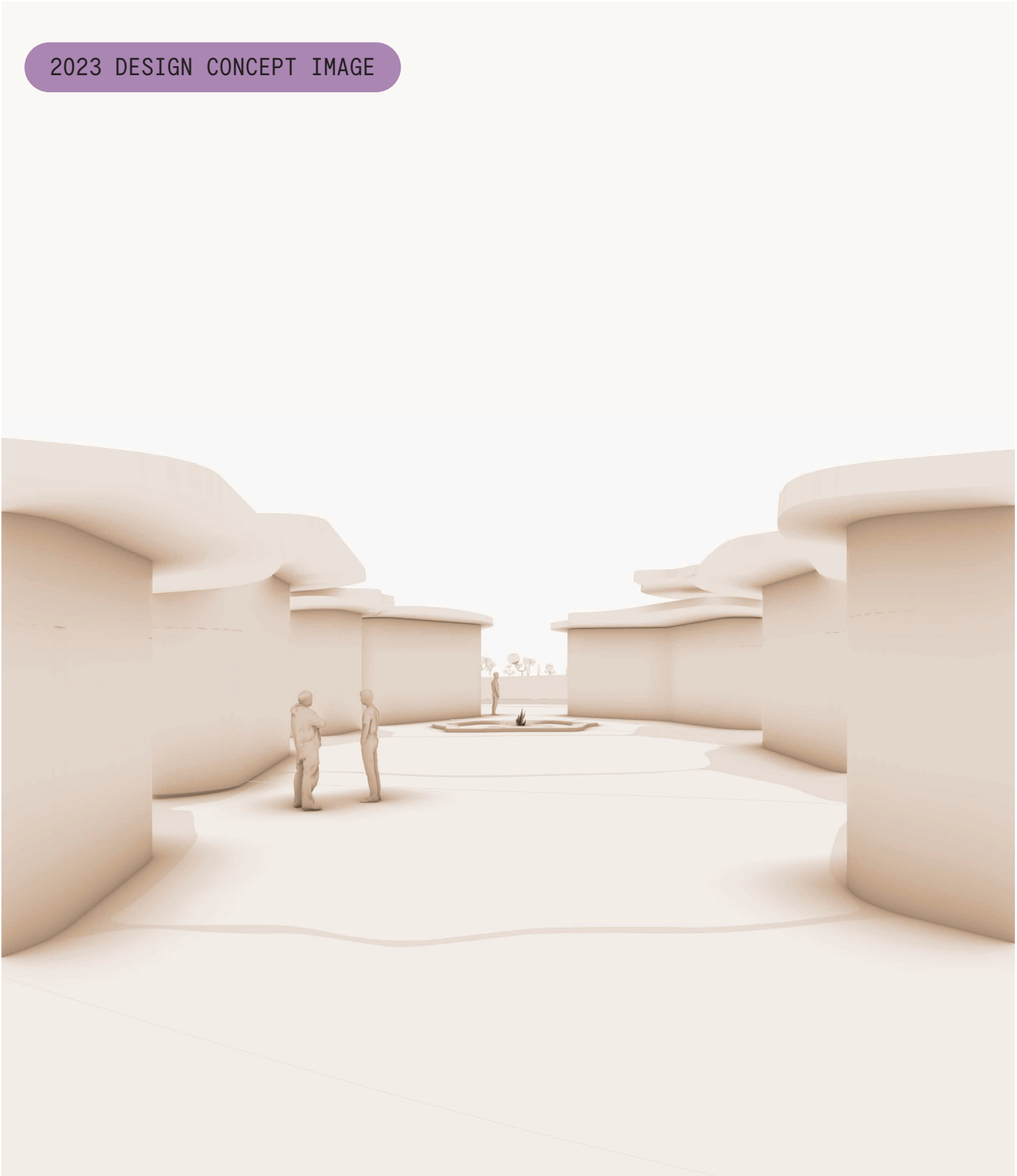
The Liyan-ngan Nyirrwa Cultural Wellbeing Centre is a cultural activity hub for traditional and modern cultural practices. Significant cultural spaces include yarning circle, bush tucker garden, central Yawuru Nurlu (traditional song and dance) area, mosaic welcoming area and fire pit and community garden.



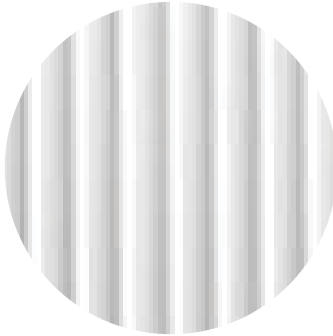
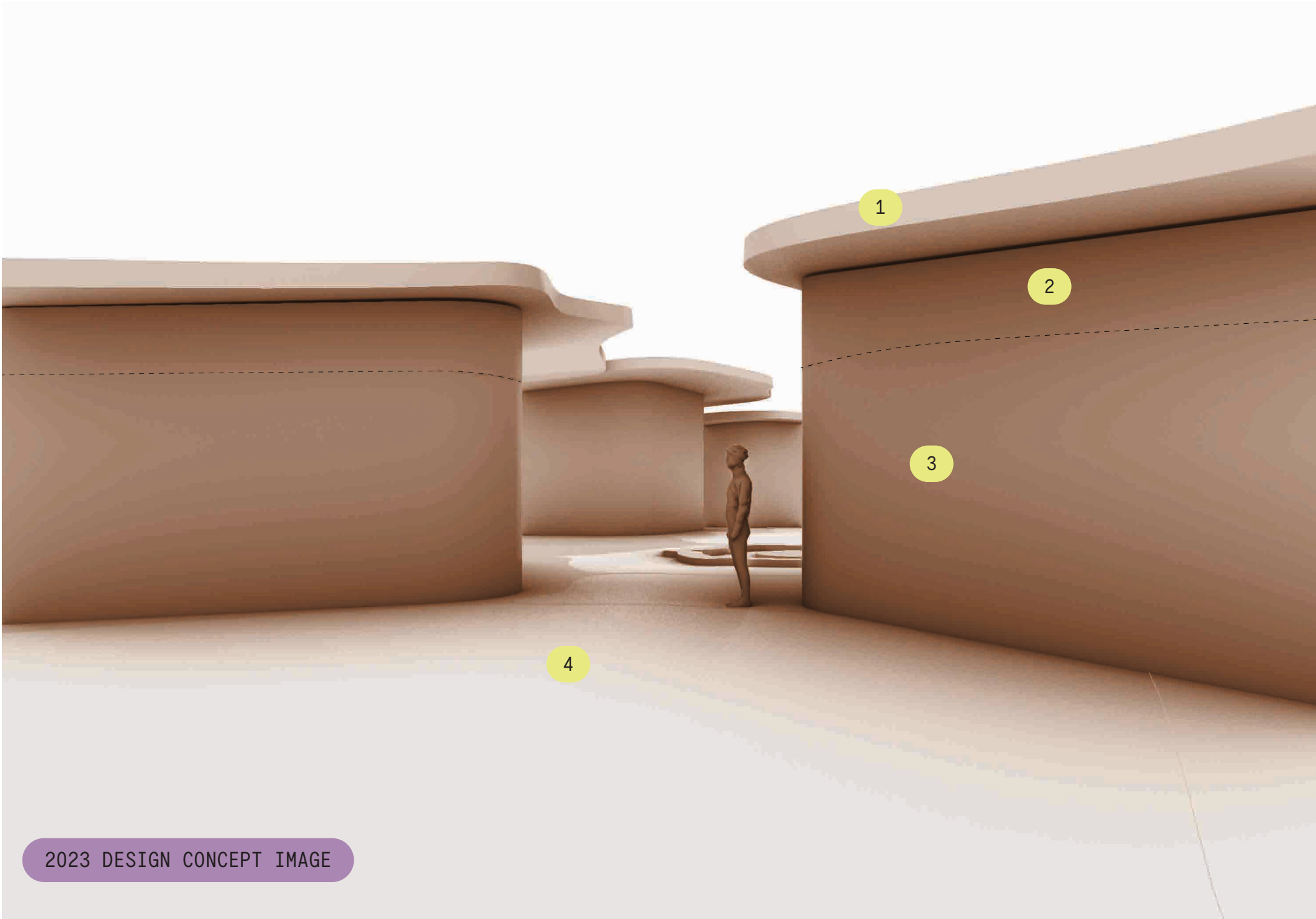
Magneten Sensory Garden

Landscape architect: MASU Planning

Magneten sensory garden aim to create a therapeutic space offering carefully curated sensory experiences in a controlled environment. The design accommodates various activities, from one-on-one sessions to group exercises. The garden's multi functional features, including vegetable, bonfire, and flower gardens, contribute to its role as a key element in treatment.



What was the supported Design Concept in 2023?



1

ZINCALUME



2

HEMPCRETE



3

LIGHT WEIGHT
IN-FILL



4

PERMEABLE PAVING TO
SEATING GROUPS AND
PATH NETWORK

What has changed since the last concept was developed?

The Healing Centre will now utilise existing portable building to provide all of the bedrooms. If the original design concepts are still supported by Elders, they will be translated to suit the new part-portable, part-site built project.



WANGAN AMPITHEATRE, GURNAIKURNAI COUNTRY, VIC



EXAMPLE PORTABLE UNIT

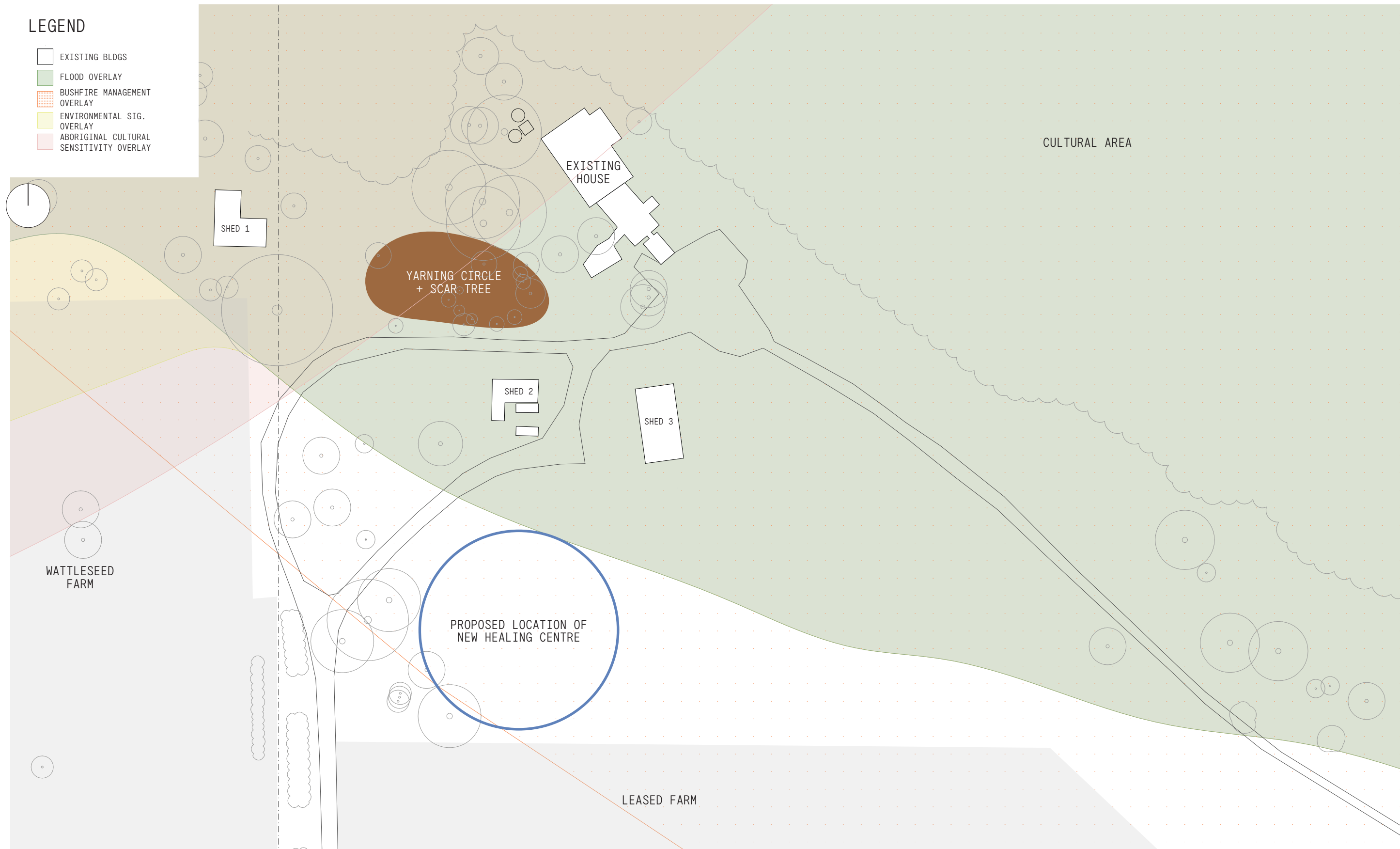
Where will the new Healing Centre be located?

The new Healing Centre will be situated in the area around the existing house and sheds on the site.



Where will the new Healing Centre be located?

The new location will avoid Town Planning Overlays such as Flood Overlays.



Questions + Answers

Who will the Baroona facility service?

The facility is a residential program designed to support young Aboriginal people who have been involved with, or are vulnerable to, the justice system. The focus is on providing Cultural Healing.

What work has been completed on the project to date?

In the background, Njernda has worked with VACCHO to compile a Functional Design Brief for the project. Since July, our consultant team has conducted an options testing analysis and a due diligence package. We are now in the Concept Design phase, where we will translate the brief's requirements into a building design.

When will the Baroona Project be completed?

We are aiming to have the new Baroona Healing Centre operational by 2027.

How many beds will Baroona have?

The new Baroona Healing Centre will have a total of 8 bedrooms: 6 for visitors and 2 for staff. There will also be dedicated spaces for the community to participate in day programs..

Will the existing Baroona building still be available for the community?

Yes. The new development will be on a separate site, and the existing Baroona house built by the Njernda community will remain available for community use.

Are you talking to the rest of the community?

Public Realm Lab will return to Echuca in September/October to meet with the broader community and discuss the design's progress. Keep an eye on Njernda's usual platforms for updates.

What is the governance structure for the project?

The Project Control Group (PCG) oversees the project. It includes members from the Koorie Justice Unit, VACCHO, and Njernda, along with project managers, architects, and the broader consultant team.

When and where is the workshop?

The workshop will be on Thursday, August 21, at 12:30pm. It will be held at the Family Services Kookaburra Room, 84 Hare St, Echuca.

Please bring any other questions you may have to the workshop on Thursday!