



IMMANUEL

Broken & Loved, Saved by Jesus, Freed to Live

This Week's Bible Readings



Isaiah 58:1-12
Psalm 112:1-9
1 Corinthians 2:1-12
Matthew 5:13-20

THANK
YOU

To everyone
who gave to
support our
Quilting Ministry!



**FEASTING
TREATS**

By Stuffi

Bake Sale Coffee & Conversation

Saturday
February 14, 2026
9 AM – 1 PM
Immanuel Lutheran
205 Pine Street
Pepin, WI

Featured Treats

Pecans, Cookies, Cakes, Bread, Hummus,
Chocolate Sauce, Soups and More!

~ All Sales benefit Immanuel ~

HAPPY
Valentines
DAY



**Week of
February 8, 2026**

SUNDAY

9:00 In-Person Worship
10:10 Bible Study Group Chat

MONDAY

1:00 Quilting

TUESDAY

3:00 WAMM

WEDNESDAY

3:30 Faith Adventures
& Confirmation
6:30 I/ELCW

SATURDAY

9:00-1:00 Feasting Treats
Bake Sale



NEXT SUNDAY

9:00 In-Person Worship
10:10 Bible Study Group Chat
2:00 Weber / St John Concert

"UPCOMING CONCERT AT IMMANUEL"

WEBER / ST JOHN

Harmony In Faith

*A Lutheran Hymn
Experience*



**Sunday
2 PM
15th February
2026**

LEARN MORE



More Information at
www.weberstjohn.com

Financial Update

Weekly Income: \$1,931
Month to Date:

~ **Actuals** ~

January

Income: \$9,363
Expenses: \$10,499

PRAYERS FOR HEALING

Brian Rhiannon Bondhus
Bruce Sue Church
Caiden Jodie Schmoker
Reese
Damon
Elaine
Tracy

PRAYERS FOR CARE CENTER FRIENDS

Carol

***We're here to pray with you.
Call/Text 715-309-9640***

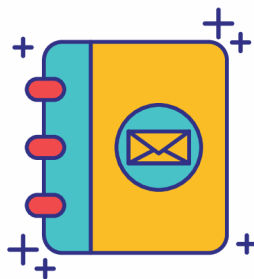
All Around Jerusalem With Jesus

For this year's Lenten season our younger youth will be looking at the events of Jesus as he entered Jerusalem just before Passover. We will be making a model of Jerusalem to help us better understand how it happened. As we travel through the city of Jerusalem with Jesus, we will be adding people to the places where Jesus went on our model. We are asking that people join our Faith Adventures time on Wed. Feb. 25th from 3-5 PM, to help our youth assemble our model and decorate the wooden peg people that will be added to our display throughout Lent and our journey with Jesus. We will be displaying the model at church, so please watch as Jesus' story comes alive for our youth.



OW

Immanuel Directory



You can pick up your copy of the printed directory in the Narthex on the stand at the base of the steps leading to the Sanctuary



IMMANUEL LUTHERAN CHURCH

Church Office: (715) 442-3213
email: office@immanuelpepin.org

PO Box 185
205 Pine Street
Pepin, WI 54759