



IMMANUEL

Broken & Loved, Saved by Jesus, Freed to Live

This Week's Bible Readings



Psalm 15
Matthew 5:1-10



The Quilters need more batting for the inner part of our quilts. Anyone have Thrivent funds that could go to this worthy cause? We would greatly appreciate your help!!!



**Week of
February 1, 2026**

SUNDAY

9:00 In-Person Worship &
Annual Meeting

MONDAY

1:00 Quilting

TUESDAY

4:00 Stewardship

WEDNESDAY

3:30 Faith Adventures & Confirmation

NEXT SUNDAY

9:00 In-Person Worship
10:10 Bible Study Group Chat



Immanuel Church Annual Meeting Sunday, February 1st

Mark your calendars for Immanuel's Annual Meeting which will be held on Sunday, Feb 1st immediately after a short worship service. This is a great time to plan next year's budget, look at what we have done this past year, and the help the council focus on our future.

*** Budget/Report Information for the upcoming meeting will be available to pick up starting Jan 25th.*



**Luther Park
Bible Camp**

Luther Park Bible Camp Annual Meeting

Luther Park's Annual Meeting is being held on Saturday, February 7th at Luther Park in Chetek starting at 10am, with a lunch following the meeting. We can have two delegates from our church attend. If you would like to attend, please email Angie at:
angie@immanuelpepin.org or call the church office at 715-442-3213.

Financial Update

Weekly Income: \$1,644
Month to Date: \$8,793

~ Actuals ~

December

Income: \$34,033
Expenses: \$19,564

January - December

Income: \$195,708
Expenses: \$183,754

PRAYERS FOR HEALING

Brian Rhiannon Bondhus
Bruce Sue Church
Caiden Jodie Schmoker

Reese
Damon
Elaine
Tracy

PRAYERS FOR CARE CENTER FRIENDS

Carol

PRAYERS FOR PEACE, COMFORT & STRENGTH

Family and Friends of Denton Pomahatch

*We're here to pray with you.
Call/Text 715-309-9640*

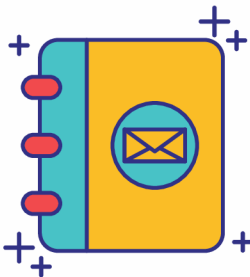
All Around Jerusalem With Jesus

For this year's Lenten season our younger youth will be looking at the events of Jesus as he entered Jerusalem just before Passover. We will be making a model of Jerusalem to help us better understand how it happened. As we travel through the city of Jerusalem with Jesus, we will be adding people to the places where Jesus went on our model. We are asking that people join our Faith Adventures time on Wed. Feb. 25th from 3-5 PM, to help our youth assemble our model and decorate the wooden peg people that will be added to our display throughout Lent and our journey with Jesus. We will be displaying the model at church, so please watch as Jesus' story comes alive for our youth.



OW

Immanuel Directory



You can pick up your copy of the printed directory in the Narthex on the stand at the base of the steps leading to the Sanctuary



IMMANUEL LUTHERAN CHURCH

Church Office: (715) 442-3213
email: office@immanuelpepin.org

PO Box 185
205 Pine Street
Pepin, WI 54759