



**LETTERING CO.**

1197 Grill Rd # B, Van Wert, OH 45891

877-793-7552

A close-up photograph of a chenille embroidery machine needle stitching a design on a red fabric. The design is a tiger's head, rendered in yellow and black chenille threads. The tiger's face is partially visible, with a white patch around its eye. The needle is currently stitching a grey and red patterned area, likely representing the tiger's stripes or fur. The machine's metal frame and a brass-colored needle holder are visible in the upper left corner.

**Chenille  
Decoration  
Catalog**

To place an order: [sales@universallettering.com](mailto:sales@universallettering.com)

# CHENILLE LETTERS & NUMBERS



## CHENILLE NUMBERS



PRODUCT CODE #NUM-0  
NUMBER 0  
Various Sizes 2" - 3"  
Various Colors



PRODUCT CODE #NUM-1  
NUMBER 1  
Various Sizes 2" - 3"  
Various Colors



PRODUCT CODE #NUM-2  
NUMBER 2  
Various Sizes 2" - 3"  
Various Colors



PRODUCT CODE #NUM-3  
NUMBER 3  
Various Sizes 2" - 3"  
Various Colors



PRODUCT CODE #NUM-4  
NUMBER 4  
Various Sizes 2" - 3"  
Various Colors



PRODUCT CODE #NUM-5  
NUMBER 5  
Various Sizes 2" - 3"  
Various Colors



PRODUCT CODE #NUM-6  
NUMBER 6  
Various Sizes 2" - 3"  
Various Colors



PRODUCT CODE #NUM-7  
NUMBER 7  
Various Sizes 2" - 3"  
Various Colors



PRODUCT CODE #NUM-8  
NUMBER 8  
Various Sizes 2" - 3"  
Various Colors



PRODUCT CODE #NUM-9  
NUMBER 9  
Various Sizes 2" - 3"  
Various Colors

## SHADOW BLOCK



PRODUCT CODE #SB-UL-S  
UP/LEFT SHADOW  
BLOCK LETTER S  
Various Sizes 4" - 8"  
Various Colors



PRODUCT CODE #SB-UR-V  
UP/RIGHT SHADOW  
BLOCK LETTER V  
Various Sizes 4" - 8"  
Various Colors



PRODUCT CODE #SB-DL-X  
DOWN/LEFT SHADOW  
BLOCK LETTER X  
Various Sizes 4" - 8"  
Various Colors



PRODUCT CODE #SB-DR-Z  
DOWN/RIGHT SHADOW  
BLOCK LETTER Z  
Various Sizes 4" - 8"  
Various Colors

## FULL BLOCK



PRODUCT CODE #FB-A  
FULL BLOCK LETTER A  
Various Sizes 4" - 8"  
Various Colors



PRODUCT CODE #FB-B  
FULL BLOCK LETTER B  
Various Sizes 4" - 8"  
Various Colors



PRODUCT CODE #FB-C  
FULL BLOCK LETTER C  
Various Sizes 4" - 8"  
Various Colors

## PLAIN BLOCK



PRODUCT CODE #PB-D  
PLAIN BLOCK LETTER D  
Various Sizes 4" - 8"  
Various Colors



PRODUCT CODE #PB-E  
PLAIN BLOCK LETTER E  
Various Sizes 4" - 8"  
Various Colors



PRODUCT CODE #PB-F  
PLAIN BLOCK LETTER F  
Various Sizes 4" - 8"  
Various Colors

## GREEK



PRODUCT CODE #GRE-SIG  
GREEK SIGMA  
Various Sizes 4" - 8"  
Various Colors



PRODUCT CODE #GRE-ETA  
GREEK ETA  
Various Sizes 4" - 8"  
Various Colors



PRODUCT CODE #GRE-OMG  
GREEK OMEGA  
Various Sizes 4" - 8"  
Various Colors

## FISHTAIL



PRODUCT CODE #FISHT-J  
FISHTAIL LETTER J  
Various Sizes 4" - 8"  
Various Colors



PRODUCT CODE #FISHT-K  
FISHTAIL LETTER K  
Various Sizes 4" - 8"  
Various Colors



PRODUCT CODE #FISHT-L  
FISHTAIL LETTER L  
Various Sizes 4" - 8"  
Various Colors

## SCRIPT



PRODUCT CODE #SCR-M  
SCRIPT LETTER M  
Various Sizes 4" - 8"  
Various Colors



PRODUCT CODE #SCR-N  
SCRIPT LETTER N  
Various Sizes 4" - 8"  
Various Colors



PRODUCT CODE #SCR-T  
SCRIPT LETTER T  
Various Sizes 4" - 8"  
Various Colors

## OLD ENGLISH



PRODUCT CODE #OLDE-P  
OLD ENGLISH LETTER P  
Various Sizes 4" - 8"  
Various Colors



PRODUCT CODE #OLDE-Q  
OLD ENGLISH LETTER Q  
Various Sizes 4" - 8"  
Various Colors



PRODUCT CODE #OLDE-R  
OLD ENGLISH LETTER R  
Various Sizes 4" - 8"  
Various Colors

# CUSTOM PATCH COMPONENTS

## LETTERING OPTIONS



### ORDERING INFORMATION:

For lettering options customer must tell us the following pieces of information:

- Font (Script, Plain Block, Full Block)
- Denote tail or no tail for Script Font
- Size (2" or 3" letters)
- Straight, curve up, curve down
- Standard Contour Felt or Rocker Style

## NUMBER COMBINATIONS



PRODUCT CODE #NUM-XXX  
TWO DIGIT  
Sizes 2" - 3"  
Various Colors



PRODUCT CODE #NUM-XXX  
TWO DIGIT W/ INSERT  
Sizes 2" - 3"  
Various Colors



PRODUCT CODE #NUM-XXX  
FOUR DIGIT W/ INSERT  
Sizes 2" - 3"  
Various Colors



PRODUCT CODE #NUM-XXX  
FOUR DIGIT W/ INSERT  
Sizes 2" - 3"  
Various Colors



## CHEVRONS & BARS



PRODUCT CODE #CHEV-1T  
1 TIER CHEVRON  
Various Colors



PRODUCT CODE #CHEV-3T  
3 TIER CHEVRON  
Various Colors



PRODUCT CODE #CHEV-4T  
4 TIER CHEVRON  
Various Colors



PRODUCT CODE #CHEV-2T  
2 TIER CHEVRON  
Various Colors



PRODUCT CODE #CHEV-IST  
CHEVRON W/ INSERT  
Various Colors



PRODUCT CODE #CHEV-TXT  
CHEVRON W/ TEXT  
Various Colors



PRODUCT CODE #BAR-PL  
BAR PLAIN  
Various Colors



PRODUCT CODE #BAR-DEC  
DECORATED BAR  
Various Colors



# ACTIVITY AND TEAM PATCHES

## STATES

ALL 50 STATES AVAILABLE



PRODUCT CODE #GA  
GEORGIA



PRODUCT CODE #CA  
CALIFORNIA



PRODUCT CODE #TX  
TEXAS



PRODUCT CODE #MI  
MICHIGAN



PRODUCT CODE #IN  
INDIANA



PRODUCT CODE #OH  
OHIO

## INSERT OPTIONS



PRODUCT CODE #IN-BASK  
BASKETBALL 1



PRODUCT CODE #IN-VB  
VOLLEYBALL



PRODUCT CODE #IN-WAPO  
WATER POLO



PRODUCT CODE #IN-SOC  
SOCCER



PRODUCT CODE #IN-FB  
FOOTBALL



PRODUCT CODE #IN-WIFO  
WINGED FOOT



PRODUCT CODE #IN-CC  
CROSS COUNTRY



PRODUCT CODE #IN-BOWL  
BOWLING



PRODUCT CODE #IN-BASE  
BASEBALL



PRODUCT CODE #IN-GOLF  
GOLF



PRODUCT CODE #IN-FDHK  
FIELD HOCKEY



PRODUCT CODE #IN-MEGA  
MEGAPHONE



PRODUCT CODE #IN-TEN  
TENNIS



PRODUCT CODE #IN-WRES  
WRESTLING



PRODUCT CODE #IN-DASH  
DANCE SHOES



PRODUCT CODE #IN-GYMN  
GYMNAST



PRODUCT CODE #IN-CHEER  
CHEERLEADER



PRODUCT CODE #IN-DANC  
DANCER



PRODUCT CODE #IN-FEDV  
FEMALE DIVER



PRODUCT CODE #IN-MADV  
MALE DIVER

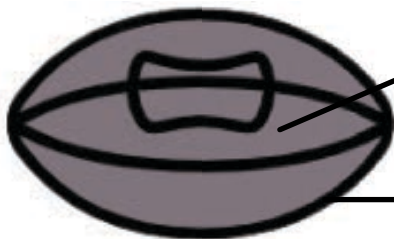


PRODUCT CODE #IN-MASW  
MALE SWIMMER



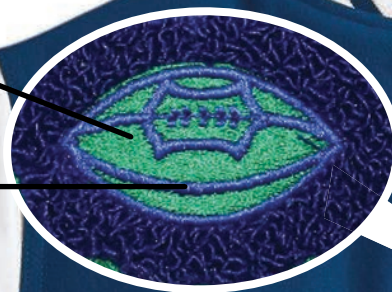
PRODUCT CODE #IN-FESW  
FEMALE SWIMMER

## INSERT DETAILS



FILL  
COLOR

DETAIL  
COLOR



# ACTIVITY AND TEAM PATCHES

## SMALL ACTIVITY & TEAM PATCHES



PRODUCT CODE #TP-BASK-1  
**BASKETBALL 1**  
Various Sizes 3" - 5"  
Various Colors



PRODUCT CODE #TP-BASK-2  
**BASKETBALL 2**  
Various Sizes 3" - 5"  
Various Colors



PRODUCT CODE #TP-BASE  
**BASEBALL**  
Various Sizes 3" - 5"  
Various Colors



PRODUCT CODE #TP-VB-1  
**VOLLEYBALL 1**  
Various Sizes 3" - 5"  
Various Colors



PRODUCT CODE #TP-VB-2  
**VOLLEYBALL 2**  
Various Sizes 3" - 5"  
Various Colors



PRODUCT CODE #TP-WIFO  
**WINGED FOOT**  
Various Sizes 4" - 8"  
Various Colors



PRODUCT CODE #TP-FOBA  
**FOOTBALL**  
Size 3"  
Various Colors



PRODUCT CODE #TP-MEG-1  
**MEGAPHONE 1**  
Size 4"  
Various Colors



PRODUCT CODE #TP-MEG-2  
**MEGAPHONE 2**  
Size 4"  
Various Colors



PRODUCT CODE #TP-SCR  
**SCROLL**  
Sizes 4" - 6"  
Various Colors



PRODUCT CODE #TP-MUS-1  
**MUSIC TREBLE CLEF**  
Size 4"  
Various Colors



PRODUCT CODE #TP-MUS-2  
**MUSIC NOTE**  
Size 4"  
Various Colors



PRODUCT CODE #TP-6PT  
**6 POINT SHEILD**  
Size 4"  
Various Colors



PRODUCT CODE #TP-4PT  
**4 POINT SHEILD**  
Size 4"  
Various Colors



PRODUCT CODE #TP-INVTR  
**INVERTED TRIANGLE**  
Size 4"  
Various Colors



PRODUCT CODE #TP-REC-1  
**RECTANGLE**  
Size 2", 4"  
Various Colors



PRODUCT CODE #TP-CIRC  
**CIRCLE**  
Various Sizes 3" - 5"  
Various Colors

## ORDERING INFORMATION:

Activity and Team Patches are to commemorate achievements for student athletes. These patches can be in the shape of all 50 states as well as other sports shapes, can contain up to 5 Lines of text with 20 maximum characters per line, and a maximum of 1 insert per patch.



# CHENILLE MASCOTS



PRODUCT CODE #BUL1  
BULLDOG 1  
Size 4.5"



PRODUCT CODE #BUL2  
BULLDOG 2  
Size 9.5"



PRODUCT CODE #BUL3  
BULLDOG 3  
Size 6"



PRODUCT CODE #BUL4  
BULLDOG 4  
Size 4.5"



PRODUCT CODE #APA  
APACHE  
Size 6.5"



PRODUCT CODE #IND1  
INDIAN 1  
Size 8"



PRODUCT CODE #IND2  
INDIAN 2  
Size 8"



PRODUCT CODE #IND3  
INDIAN 3  
Size 7.5"



PRODUCT CODE #PAN1  
PANTHER 1  
Size 6"



PRODUCT CODE #PAN2  
PANTHER 2  
Size 6.5"



PRODUCT CODE #PAN3  
PANTHER 3  
Size 4.5"



PRODUCT CODE #WILD  
WILDCAT  
Size 6"



PRODUCT CODE #TIG1  
TIGER 1  
Size 8"



PRODUCT CODE #TIG2  
TIGER 2  
Size 8"



PRODUCT CODE #BOB  
BOBCAT  
Size 6.5"



PRODUCT CODE #LIO1  
LION 1  
Size 3.5"



PRODUCT CODE #LIO2  
LION 2  
Size 10"



PRODUCT CODE #RAM  
RAM  
Size 7"



PRODUCT CODE #BULL  
BULL  
Size 9.5"



PRODUCT CODE #CARD  
CARDINAL  
Size 9.5"



PRODUCT CODE #CBOY  
COWBOY  
Size 10"



PRODUCT CODE #MUS1  
MUSTANG 1  
Size 7"



PRODUCT CODE #MUS2  
MUSTANG 2  
Size 8"



PRODUCT CODE #MUS3  
MUSTANG 3  
Size 8"



PRODUCT CODE #VIK  
VIKING  
Size 10"



PRODUCT CODE #TRO  
TROJAN  
Size 8"



PRODUCT CODE #PIR  
PIRATE  
Size 8"

## SAMPLE CUSTOM PATCHES



# LARGE SPORTS BACK PATCHES



PRODUCT CODE #BP-VBALL  
**VOLLEYBALL**  
Size 8"  
Various Colors



PRODUCT CODE #BP-GOLF  
**GOLF**  
Size 8"  
Various Colors



PRODUCT CODE #BP-FBALL  
**FOOTBALL**  
Size 6"  
Various Colors



PRODUCT CODE #BP-BBALL  
**BASKETBALL**  
Size 8"  
Various Colors



PRODUCT CODE #BP-BOWL  
**BOWLING**  
Size 8"  
Various Colors



PRODUCT CODE #BP-GYMN  
**GYMNASTICS**  
Size 8"  
Various Colors



PRODUCT CODE #BP-WRES  
**WRESTLING**  
Size 8"  
Various Colors



PRODUCT CODE #BP-FLAG  
**FLAGS**  
Size 8"  
Various Colors



PRODUCT CODE #BP-KAR  
**KARATE**  
Size 5"  
Various Colors



PRODUCT CODE #BP-CBATS  
**CROSSED BATS**  
Size 8"  
Various Colors



PRODUCT CODE #BP-DIVE  
**DIVING**  
Size 8"  
Various Colors



PRODUCT CODE #BP-FDHKY  
**FIELD HOCKEY**  
Size 8"  
Various Colors



PRODUCT CODE #BP-DANC  
**DANCE**  
Size 9"  
Various Colors



PRODUCT CODE #BP-LACR  
**LACROSSE**  
Size 9"  
Various Colors



PRODUCT CODE #BP-MEGA  
**MEGAPHONE**  
Size 7"  
Various Colors



PRODUCT CODE #BP-LYRE  
**MUSIC LYRE**  
Size 8"  
Various Colors

This patch is available with 2 lines of personalization, 15 characters each.

## ORDERING INFORMATION:

Large Sports Back Patches can include a maximum of 1 line with up to 4 characters. This is great for years, positions, and jersey numbers. These patches also look good without any personalization



## HOW TO ORDER

We have thousands of mascots and designs in our design library. If you don't see the mascot or design that you are looking for, talk to you sales representative and do one of the following:

- 1) Send a physical sample of the patch you are trying to replicate (best option!)
- 2) Take a picture of an existing patch laying flat on the table with a ruler next to it.
- 3) Submit digital artwork in .jpeg .pdf .ai or other similar formats.

# COLORS



ANTIQUÉ GOLD



BLACK



BRIGHT RED



BURNT ORANGE



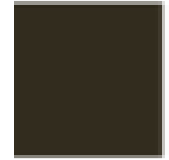
CARDINAL RED



CHAMPAGNE



COLUMBIA BLUE



DARK BROWN



DARK ORANGE



DARK TEAL



DARTMOUTH GREEN



FOREST GREEN



GOLD



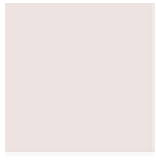
INDIANA GOLD



KELLY GREEN



MAROON



NATURAL



NAVY



NEON YELLOW



OLD GOLD



OWL GRAY



PURPLE



RED



ROYAL BLUE



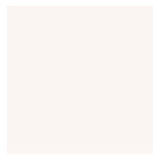
SILVER GRAY



TEXAS ORANGE



UNIVERSAL GOLD

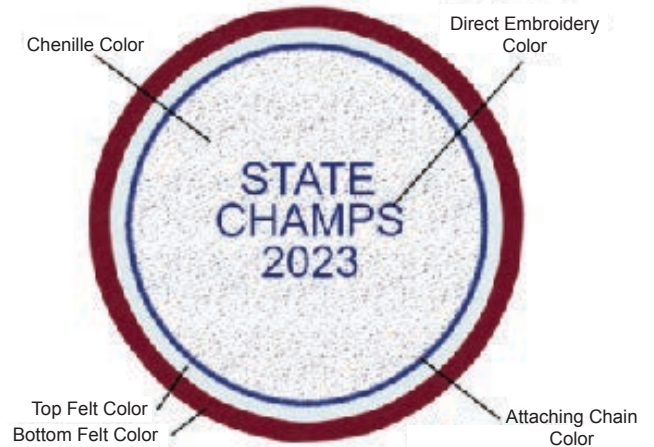


WHITE



YELLOW

## CHENILLE COMPONENT DETAILS



Chenille patches are measured from top to bottom, not including the felt. Each layer of felt adds about a half inch to the overall size. The above patch would be described as a 4" Circle Team Patch with White Chenille, Navy attaching chain, Navy Embroidery color, White top felt, red bottom felt. It is 4" from top to bottom not including the the felt.