



# Plas-Mac, Incorporated

3696 US Highway 83, Wellington, Texas 79095  
(806) 447-0065

[www.firetrucktanks.com](http://www.firetrucktanks.com)

## ► 2021 Product Catalog



### **Our Mission**

- When only the best will do, firefighters and apparatus manufacturers call Plas-Mac, Inc. because of our high-end, trouble-free tanks and service after the sale.

## **Table of Contents:**

<b>Polypropylene Tanks</b>	<b>3</b>
Standard Equipment	<b>4</b>
Skid Tanks	<b>5</b>
Rectangular Tanks	<b>7</b>
“T” Tanks/Custom-Shaped Tanks	<b>8</b>
<b>Tank Options</b>	<b>9</b>
Foam Tanks	<b>10</b>
Fittings	<b>11</b>
Accessories	<b>15</b>
<b>Other Products</b>	<b>19</b>
<b>Warranty</b>	<b>21</b>
<b>Service</b>	<b>22</b>

# Polypropylene Tanks

## About Our Tanks

Plas-Mac, Inc.'s tanks range in size from 5 gallon foam to 4,000 gallon skid or "T" tanks. All are built to meet NFPA standards.

They are fabricated from 1/2" or 3/4" UV stabilized polypropylene in black or white.



.....  
Ordering a tank is easy. You may call or email or fax dimensions and fitting locations, etc. or send us a hand drawing of what you want and we will make a CAD drawing and send it back for your review.

You may make changes to the drawing and when it is the way you want, just let us know and we will build it.

2,000 gallon and larger tanks are constructed from 3/4" thick polypropylene and 1/2" thick baffles. The smaller tanks are made from 1/2" thick polypropylene with 3/8" thick baffles.

To calculate the capacity of your tank, multiply the length x width x height in inches, divide by 1,728 and then multiply by 7.48. Then to deduct for the thickness of the sides and baffles, multiply your answer by .90 on a tank built from 1/2" or .875 on a tank made from 3/4" thick plastic. This will get within 5% which is close enough to get us started.

When working with a T tank, figure the top and bottom sections separately and then add them together.

If you would like to have a 10 gallon internal foam tank, then add 15 gallons (or 25 gallons for a 20 gallon tank) to your capacity to allow for it.

You may call 800-687-0128 and we will help you determine the size of your tank.

## **≡ Standard Equipment on Every Tank Includes :**

### **Fill Tower with Hinged Lid**

Size based on capacity



### **Stainless Steel Strainer Basket**

Size based on capacity (4" or 6")



### **Overflow Pipe**

Size based on capacity (3", 4", or 6'); straight pipe or elbow through tank to exit behind the rear axle.



### **Lifting Eye**

Removable life eye is an option



### **Sump with Drain**

Or separate drain without sump



### **Fill Fitting**

1-1/2" Standard



### **Suction Fitting**

Piped to sump or to an anti-swirl plate in the tank  
3" Standard



### **Limited Lifetime Warranty**

Plas-Mac, Inc. issues a limited warranty equal to the service life of the vehicle upon which the tank is originally installed of 10 years.



# Skid Tanks



*400 Gallon Skid Tank with 10 Gallon Internal Foam Tank*

---

**Skid tanks are rectangular tanks with 3 additional options:**

1. Mounting tabs on each end or side for bolting the tank to the skid or truck bed.
2. Sight gauge. External is standard, internal is optional. The tank above features an internal sight gauge.
3. Hose reel mounting blocks on top.

### **Skid Tanks Include All Standard Equipment Plus:**



**Mounting Tabs on Each End/Side**  
2-1/2" Long x 1" High Standard  
Customizable to specifications



**Sight Gauge—Internal or External Hose Type**  
Customizable to specifications



**Hose Reel Mounting Blocks**  
40" Long & 16-3/4" Center to Center  
Standard  
Customizable to specifications

# **Rectangular Tanks**



*400 Gallon Rectangular Tank*

---

This is a plain water tank with a 3" suction, 1-1/2" fill and a 1-1/2" drain. The suction fitting is piped to the sump or to the center of the tank if it doesn't have a sump, turns down and extends through the anti-swirl plate. The anti-swirl plate is approximately 16" x 16" x 1/2" thick and is spaced 3/4" off the tank bottom.

This tank comes with the standard fittings, lifting eye, overflow pipe, stainless steel strainer basket, fill tower and a limited lifetime warranty.

## **“T” Tanks & Custom Shapes**



*1,250 Gallon Inverted “T” Tank with 20 Gallon Internal  
Foam Tank*

The tank above has the following options:

- 20 gallon internal foam tank
- Pump platform
- Extensions on top for storage
- 20 gallon foam tank
- 4-bolt internal mounting blocks

“T” tanks can either be inverted like this one or the traditional “T” shape to fit into the bed of a truck.

Custom-shaped tanks can also be built to accommodate your needs. Plas-Mac’s design and manufacturing process allows for almost limitless options.



# Tank Options

Plas-Mac, Inc. offer s a wide range of customizable options to ensure our tank will fit your application. From more standard options such as plumbing and foam tanks to fully custom accessories, Plas-Mac, Inc. manufactures each tank to fit your needs.

Popular options include:

- Internal foam tanks
- Additional hose reel mount blocks
- L shape or inverted L shape
- Fast-fill fittings
- Dump valve provision
- Extensions on top for storage
- Hose tray
- Internal mounting blocks
- Plain pipe pass through
- Pressure pipe pass through for brush trucks that have whip lines at the front of the tank.
- Pump platform—3/4" thick with gussets on the sides
- Additional sight gauges
- Wheel wells
- **Many other options available** including a 3/4" upgrade for tanks less than 2,000 gallons. Adds about 15% to the cost.



### Foam Tanks

#### External Foam Tanks

Include hinged fill tower with latch, 1-1/2" strainer basket, and P/V vent; mounting tabs, sight gauge, and fill/drain/suction fittings or taps.

Custom built to any size, from 5 gallons and up.

#### Internal Foam Tanks

Built into a notch in the water tank; include hinged fill tower with latch, 1-1/2" strainer basket, and P/V vent; mounting tabs, sight gauge, and fill/drain/suction fittings or taps.

Standard size is 10 gallons; can be custom built to most any size for your application.

If located at the front of the tank, foam can be piped through to the rear for easy access.



The foam fill stack inside the foam tank prevents foaming while filling. Foam tanks are also vented to speed up filling.



- ⇒ **1" NPT FILL - 224 GPM @ 60 PSI**
- ⇒ **1-1/2" NPT FILL - 504 GPM @ 60 PSI**
- ⇒ **2" NPT FILL - 897 GPM @ 60 PSI**
- ⇒ **2-1/2" NPT FILL - 1,401 GPM @ 60 PSI**
- ⇒ **3" NPT FILL - 2,018 GPM @ 60 PSI**
- ⇒ **4" NPT FILL - 3,587 GPM @ 60 PSI**
- ⇒ **5" NPT FILL - 5,604 GPM @ 60 PSI**
- ⇒ **6" NPT FILL - 8,070 GPM @ 60 PSI**

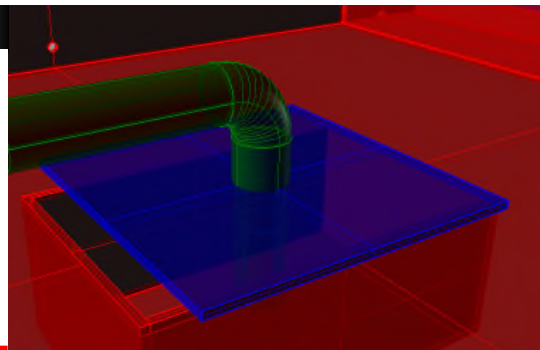


*Left: Suction piping with elbow*

*Right: Suction piping straight into tank*

- 
- ⇒ **2" NPT Suction**
  - ⇒ **3" NPT Suction w/2-1/2" Bushing**
  - ⇒ **3" NPT Suction**
  - ⇒ **4" NPT Suction**
  - ⇒ **6" NPT Suction**

All suction fittings are piped to an anti-swirl plate inside the tank, which prevents cavitation.





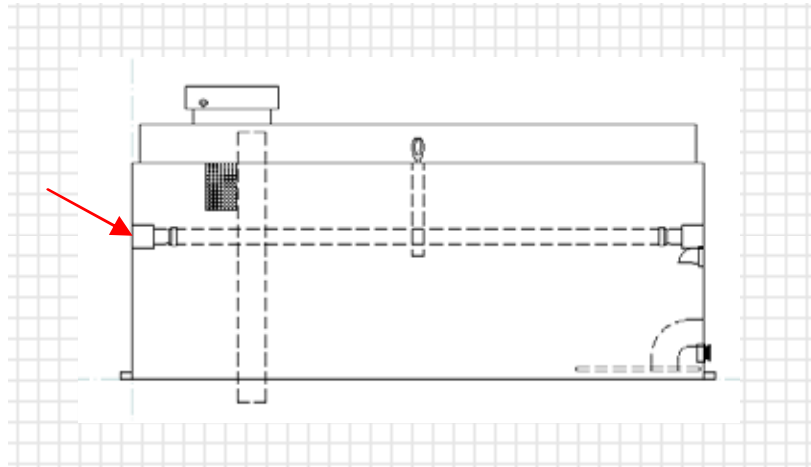
- ⇒ **1" NPT Drain**
- ⇒ **1-1/2" NPT Drain** **[Standard]**
- ⇒ **2" NPT Drain**
- ⇒ **3" NPT Drain**
- ⇒ **4" NPT Drain**



This is a standard 1-1/2" NPT drain with drain plug close to the bottom of the driver's side rear.

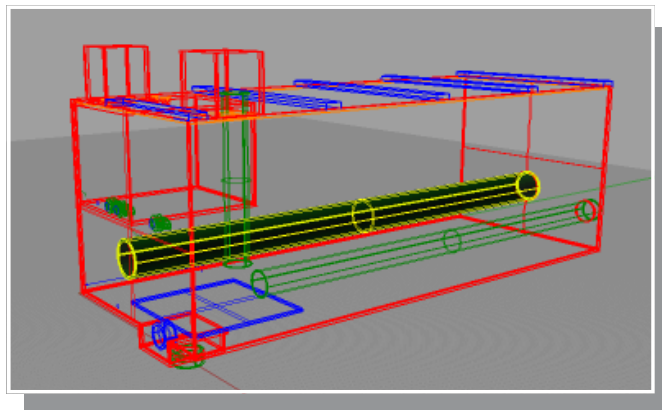
## Pressure Pass-Throughs

- ⇒ **1"**
- ⇒ **1-1/2"**
- ⇒ **2"**



## Plain Pipe Pass-Throughs

Used for installing your steel pipe through the tank.



- ⇒ **3"**
- ⇒ **4"**
- ⇒ **6"**



## Mounting Tabs



2-1/2" Long x 1" High on Both Ends  
Standard

Can be built to specifications

---

## Hose Reel Mounting Blocks



Standard size is 40" Long and 16-3/4" Center to Center

Include stainless steel T-slot nuts and studs.



---

## Sight Gauges—Internal or External Hose Type



### **Pump Platforms**



Custom built to specifications out of 3/4" thick polypropylene with support gussets on each side

---

### **Extensions**



Custom built to specifications out of 1/2" thick polypropylene with drain holes that can also be used as hand holds or strap mounting points.

---

### **Dump Valve Flanges**

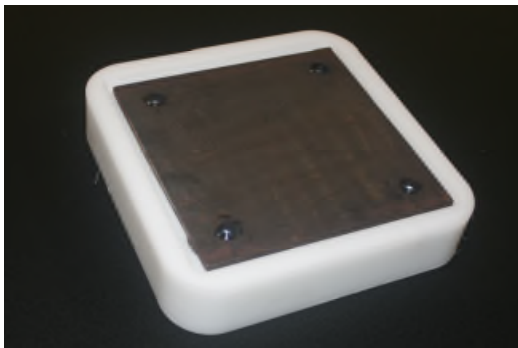


10" x 10" or 12" x 12"

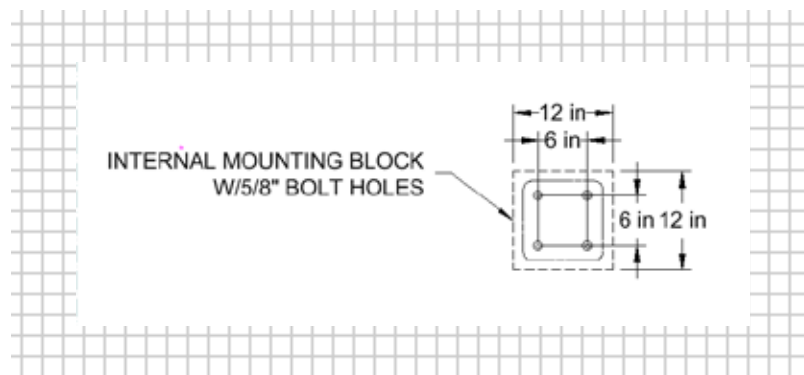




## Internal Mounting Blocks



Provide another mounting option in lieu of traditional mounting tabs



## Other Mounting Pads/Blocks

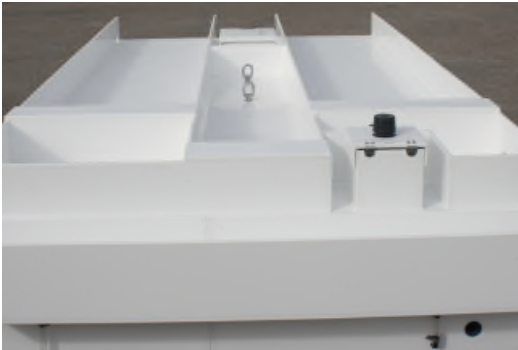


Light Mount Bracket



Whip Line Mounting Pad

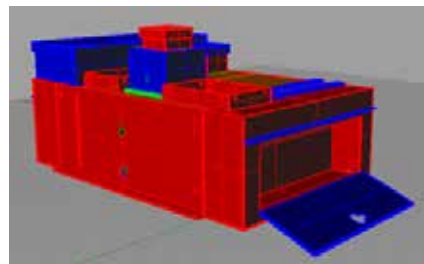
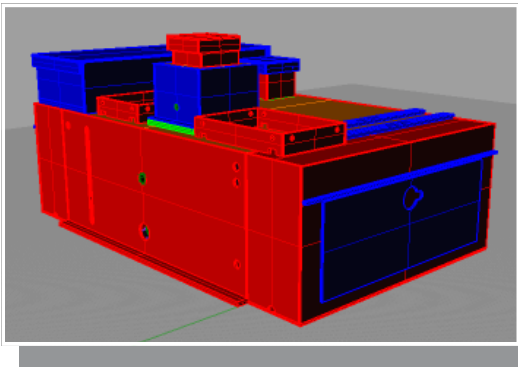
### Hose Trays



Custom built to specifications;  
Includes lip to hold hose in place



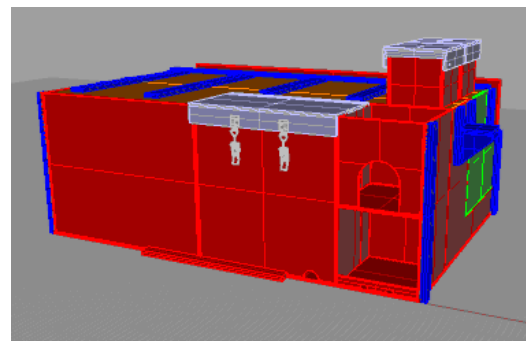
### Custom Compartments



Built to your specifications



Variety of hinge & latch options



## Other Products

Aside from its polypropylene tanks for the fire industry, Plas-Mac, Inc. also offers custom-built tanks for other applications.\*\*

### **Chemical Tanks**

### **Industrial Storage Tanks**

### **ATV/UTV Tanks & Accessories**

### **Plating Tanks**

### **Fabricated Cylindrical-Shaped Tanks**

### **Sump Liners**

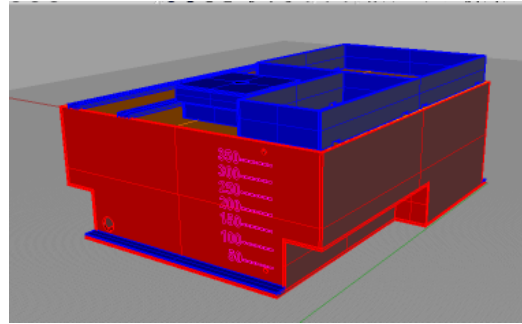
### **Storage Boxes**

### **Pontoons**

\*\*These products do not include the same warranty as fire industry tanks. Please contact Plas-Mac for more information.

### **Chemical Weed Control**

Truck tanks for spraying weeds and sterilizing soil in the 50 to 400 gallon range with a sight gauge, pump and reel blocks on top and mounting tabs are built by Plas-Mac.



Chemical weed control also reaches into the UTV and ATV market. Plas-Mac, Inc. builds tanks for this industry as well.



### **Industrial Storage Tanks**

This picture shows a sludge tank built for a copper refinery.

## Warranty

### **PLAS-MAC, INC. LIMITED LIFETIME WARRANTY AND NOTICE OF DISCLAIMER OF EXPRESS AND IMPLIED WARRANTIES**

Plas-Mac, Inc. issues this limited lifetime warranty to the customer who is the original retail purchaser ("Customer") of a polypropylene tank (the "Tank") (10 to 4000) gallons manufactured or sold by Plas-Mac, Inc. as follows:

1. Subject to the terms hereof, the Tank will be free of defects by reason of improper workmanship, manufacture, material, or structural failure for a period equal to the service life of the fire truck upon which the Tank is originally installed. Plas-Mac, Inc. will repair or replace — at its option — any defective Tank without charge to Customer when the terms hereof have satisfied. The service life of the fire truck is equal to and limited to ten (10) years.
2. To obtain warranty service, Customer must contact Plas-Mac, Inc. to arrange for repairs. The name and address of the nearest authorized business location or service center can be obtained from Plas-Mac, Inc. by calling the telephone number or writing to the address provided below. The tank registration card must be on file at Plas-Mac, Inc. when requesting warranty service.
3. Should a defect occur the customer must notify Plas-Mac, Inc. as soon as possible at 1-800-687-0128 or 806-447-0065 Plas-Mac, Inc. will send a representative within 48 hours to repair the tank if it is rendered "out of service" because of the tank failure. If the tank is still in service, a time will be set up for the repair. The tank will be repaired and placed back into service. If the structural integrity of the tank is compromised in any way the tank will be replaced. Plas-Mac, Inc. will pay reasonable costs for the tank removal and replacement. This service is only available in the continental United States. Tanks outside the continental United States must be returned to Plas-Mac, Inc. for service or repair.
4. This warranty does not cover defects caused by (i) modification, alteration, repair, or service of a Tank by anyone other than a service center authorized by Plas-Mac, Inc.; (ii) physical abuse to or misuse of the Tank; or (iii) use of a Tank in a manner contrary to the instructions accompanying the Tank (iv) accidents, fire, theft or vandalism.
5. ANY EXPRESS WARRANTY NOT PROVIDED HEREIN AND ANY REMEDY FOR BREACH OF CONTRACT WHICH, BUT THIS PROVISION, MIGHT ARISE BY IMPLICATION OR OPERATION OF LAW, IS EXCLUDED AND DISCLAIMED. THE IMPLIED WARRANTIES OF MERCHANTABILITY AND FITNESS FOR ANY PARTICULAR PURPOSE ARE EXCLUDED EXCEPT AS HEREIN SET FORTH. \*  
*\*NOTICE: Some states do not allow limitations on how long an implied warranty lasts, so the above limitations may not apply to you.*
6. UNDER NO CIRCUMSTANCES WILL PLAS-MAC, INC. BE LIABLE TO CUSTOMER OR ANY OTHER PERSON FOR ANY SPECIAL OR CONSEQUENTIAL DAMAGES WHETHER ARISING OUT OF BREACH OF WARRANTY, BREACH OF CONTRACT, OR OTHERWISE. PERFORMANCE OF REPAIRS AND NEEDED ADJUSTMENTS IS THE EXCLUSIVE REMEDY UNDER THIS WRITTEN WARRANTY OR ANY IMPLIED WARRANTY. \*  
*\*NOTICE: Some states do not allow the exclusion or limitation of special or consequential damages, so the above limitation or exclusion may not apply to you.*
7. To enforce the warranty please fill out the registration card accompanying this warranty and send back to Plas-Mac, Inc. within 90 days.
8. This limited warranty gives Customer specific rights. Customer may also have other rights, which may vary, from state to state. For the name of the nearest authorized service center, contact Plas-Mac Inc., 3696 U. S. Hwy 83, Wellington, TX 79095; (800) 687-0128.

## **Service**

Call 800-687-0128 for Plas-Mac, Inc. warranty service or a quote on modifications. Plas-Mac, Inc. repairs other brands of tanks as well.

Tank repair is a serious business. All new welds have to be better than the broken one. If Plas-Mac, Inc. is not performing your tank repair, make sure the weld technician cuts all the old stuff out before starting in with the new. It is the only way to assure the repair will be structurally stable. Remember, lives and property are at stake!

Plas-Mac, Inc. will bring a pickup equipped with enough equipment to get you back into service fast. This usually consists of the same amount of equipment that is in a work bay at our facility plus a generator to run it.

Another option is to bring your truck (or just the tank) to our facility in Wellington TX for repair or modification. This may be the most cost-effective way if the unit can be removed from service for a few days.





# Plas-Mac, Incorporated

3696 US Highway 83, Wellington, Texas 79095

(806) 447-0065

[www.firetrucktanks.com](http://www.firetrucktanks.com)

## HEAVY-DUTY OFF-ROAD POLYPROPYLENE TANKS MADE-TO ORDER FOR ALL TYPES OF FIRE APPARATUS DESIGN // BUILD // DELIVER

### **Plas-Mac, Inc. Polypropylene Tank Mounting Instructions**

The tank shall be mounted in a fabricated steel base. The base shall consist of an angle iron, 3" x 3" x 1/4", fabricated such that it supports the entire perimeter of the bottom of the tank. Also the base should prevent side-to-side and front-to-back movement of the tank. The tank shall have room inside the frame to allow for thermal expansion.\* The base shall have crossmembers of 4" x 2" x 1/4" channel iron set on 12" centers. The truck frame may serve as part of the base as long as the previous requirements are met. The base shall be padded with rubber (1/4" x as wide as the crossmembers and a 60D to 65D hardness). The rubber shall be glued to the crossmembers with a 3M adhesive. A truck with a "flat bed" may be used. Angle iron shall be bolted to the truck bed in such a way to prevent side-to-side and front-to-back movement. The bed shall be padded with rubber strips, as previously described, supporting the entire perimeter of the tank. The rubber strips shall be laid crossways on 12" centers and glued to the bed. The tank shall have a hold-down. The hold-down may be an angle iron bolted above the top of the tank and padded with rubber to prevent vertical tank movement. The hold-down may be a 2" x 1/4" steel strap bolted to rear of the base, extending up the rear of the tank to the top, across the top to the front and then down to the base and bolted. The straps shall be padded with rubber. The straps must be snug but not tight. The tank needs room for thermal expansion. Other types of tank restraint systems may be satisfactory. Check with Plas-Mac, Inc. for approval. NOTE: The tank shall only be lifted using the lifting eyes on the tank. The tank shall be empty when lifted.

### **Tank Connections**

Flexible hose shall be used on all connections to prevent stress on the fittings and the tank.

\*The thermal expansion of polypropylene is 1/16" per linear foot.