



presents the

Heart of the Herd Sale

Australia's Largest Charolais Female Sale in 2025

10am, Friday 21st of February

ONLINE ONLY. Both video and live audio via AuctionsPlus.



Lot 4



Lot 12



17 Red calves by Glenlea Cowboy (P) R/F
1 to 5 weeks old on Lots 78 to 102.



Sale Incentives and Buyer Support

1. Interest-Free Payment Terms

- Buyers can secure their purchases with **50% of the sale price** under normal agent terms, with the remaining **50% due on 4 July 2025**.
- This offer is **interest-free** and **subject to approval** by Stud Principal Roderick Binny before the auction.
- Buyers are encouraged to **discuss approval early** to ensure a smooth process—don't wait until the last minute!

2. Fixed Freight Pricing

- Glenlea offers **fixed freight rates to Dalby, QLD, and Wodonga, VIC**, providing transparency and simplicity for buyers.
- Regardless of the cattle's location, Glenlea ensures delivery logistics are managed efficiently. Buyers can confidently bid on one animal or an entire draft knowing delivery is straightforward.
- Full details are available in the **Terms and Conditions of Sale**.

3. Agistment and Joining Options

- Glenlea provides **short and long-term agistment options** for individual animals or groups of females.
- Services include joining females that are ready to mate or confirming the status of animals listed as **NDP (Not Detectably Pregnant)** on sale day.
- Terms, conditions, and applicable costs apply. Buyers interested in these services are encouraged to **contact Roderick directly for more information**.

4. Tick Fever Vaccination

- All lots in the sale are vaccinated for **tick fever**, ensuring they are ready to enter **ticky areas immediately post-sale**.

GLENLEA BEEF

A Legacy of Excellence & Opportunity

With over 51 years of history, Glenlea Beef has become synonymous with genetic excellence, adaptability, and outstanding client service.

Originally founded in Tasmania, Glenlea now operates across Queensland and New South Wales, running over 1,000 breeders and producing 300 bulls annually.

What truly sets Glenlea apart is its unwavering commitment to client support. From breeding advice to marketing strategies, Glenlea prides itself on helping both new and experienced breeders achieve success in Charolais seedstock production.

This year marks Glenlea's 52nd year and the 10th Female Sale in the past nine years. The upcoming sale is one of the largest and most diverse offerings Glenlea has ever assembled, showcasing females from five distinct groups to highlight exceptional genetic variety.

Key Sale Drafts

The sale catalogue is divided into five key drafts, each tailored to meet the diverse needs of breeders:

- Elite PTIC Red Factor Heifers:

Representing the pinnacle of Glenlea's breeding program, these heifers combine exceptional performance and versatility.

- **Young Cows and Calves:** This group features replacement-quality heifers and sire-prospect bull calves, rejoined and ready to enhance the top end of any herd.

- **Scharwyn Females:** Effectively a dispersal within this sale, this draft includes all R, S, and T drop females relocated to Glenlea's sub-tropical base. These females have been acclimatised for northern conditions, tick fever vaccinated, and are built on Minnie Vale genetics, known for their adaptability and carcass traits. They represent a unique opportunity for breeders.

- **Elite Unjoined Red Factor Heifers:** A special selection of six heifers from Glenlea's leading replacement group, offering exciting potential for breeders.

- **Mixed-Age Cows and Calves:** This feature group rounds out the sale, with cows from Glenlea's Coonabarabran property. These cows, all with red factor calves sired by Glenlea Kowboy (P) R/F, are built on LVH-Fairfield genetics acquired from Roma in 2021.

Meeting Market Demand

The market for Charolais bulls has never been stronger, with commercial breeders driving demand and premiums for Charolais-cross weaners and feeders.

This sale provides an excellent opportunity to invest in high-quality females, whether you're starting a new Charolais breeding program or expanding an existing one.

Join Glenlea Beef in celebrating over five decades of leadership in Charolais breeding by participating in this landmark female sale.

This is your chance to invest in genetics that combine proven adaptability, superior carcass traits, and the trusted support of one of Australia's leading Charolais enterprises.



Roderick Binny

**Stud Principal
Glenlea Beef**

0409 911 791

rbinny@australiangrassfedmeats.com



Heart of the Herd

CHAROLAIS FEMALE SALE

Friday 21st February 2025

1pm NSW / 12noon QLD

ONLINE ONLY. Both video and live audio via AuctionsPlus.

76 Cows & Calves

20 PTIC Heifers

6 Yearling Red Heifers

INSPECTIONS

Inspections with Roderick Binny anytime direct OR with Elders agents and James Dockrill by arrangement.

VIDEOS

Videos will be available on AuctionsPlus prior to sale.



Roderick Binny P: 0409 911 791

E: rbinny@australiangrassfedmeats.com



QLD

Michael Smith 0428 541 711

Jenni O'Sullivan 0428 222 080

OR contact your preferred Elders Agent.

PINEDOCK PASTORAL

James Dockrill 0400 387 116

WWW.GLENLEABEEF.COM.AU

HEALTH AND FERTILITY: All females are sold as fertile and joined, PTIC or unjoined. We have a number of lots that maybe too early to detect in calf on sale day. These will be sold as joined and a recommendation to run with a bull when arrived at purchaser's property. More details will be provided in the supplementary sheet prior to sale as to the pregnancy status of individual lots.

Any animal not conceiving within 6 months of purchase, the procedure will be a vet examination then discussion with Glenlea Beef. We will either arrange to return the animal to get pregnant at one of our properties and then return to purchasers at 50/50 share cost of transport or find another solution by mutual agreement if the first solution is not practical due to distance or other factors. This does not include animals that are injured or suffering disease contracted after the sale. We strongly recommend you insure your purchases.

On rare occasion a female tested and sold as PTIC may lose the pregnancy after sale, due to transport stress, change of environment or other factor, this is at purchaser's risk.

VACCINATIONS: All lots: 7 in 1.

TICK FEVER: All lots are Tick fever vaccinated and right to travel into ticky country immediately post sale.

INSURANCE: We recommend you insure your new purchases. Elders can help you can arrange this at fall of hammer sale day.

AGENT REBATE: For all lots, a rebate of 1% to all licensed agents is available, introducing buyers 24 hours prior to sale and settling accounts within 7 days.

TRANSPORT: Delivery will be co-ordinated by nominated sale agents. Maximum charges for delivery to Albury for southern buyers is \$300 per cow/calf and \$250 per individual lot. To Toowoomba for northern buyers that will be \$250 per cow/calf and \$200 per individual lot.

PHONE BIDDING: Phone bidding is available by contacting the agents or Glenlea prior to sale to arrange for a dedicated agent to call you and assist you with your bidding.

ACCURACY OF CATALOGUE: Every effort is made to be as accurate as possible. However mistakes can happen in the construction of catalogue and printing, we will resolve any issues at best as possible but make no warranty as to accuracy.

DNA TESTING: If DNA testing has not be done on a lot, Glenlea make no warranty as to DNA verification. All DNA testing results, including sire/mating verification, polling status and MYO and BPA status is available on any lot tested on the Charolais data base, talk to Rod Binny for any clarification.

CHAROLAIS BREEDPLAN: We no longer print detailed explanations of BREEDPLAN in our catalogues. All information explaining BREEDPLAN and how to use it to help with your selections is available at the click of your mouse. For more detailed discussion about individual lot EBV's call Rod Binny to discuss.



Can't make the sale?
Register in just seven easy steps and log onto AuctionsPlus to bid from anywhere on your phone, tablet or desktop.

- 1 REGISTER ONLINE**
FREE once off registration for all auctions.
- 2 COMPLETE BUYER INDUCTION**
The buyer induction will help you understand the roles and responsibilities of everyone on the AuctionsPlus system.
- 3 VIEW CATALOGUE**
Stock history, photos, videos, pedigrees and more. You can also favourite lots you are interested in.
- 4 ENTER AUCTION**
Log into the auction anytime, anywhere and bid on your mobile, tablet or computer. Auctions can end after 30 minutes so get in early.
- 5 Auto bid**
Can't stay for the whole sale? Set your maximum bid on the lot that you want to purchase and let the computer bid for you.
- 6 CONTACT SELLER**
If successful, contact selling agent to arrange payment and delivery. Or if you are the highest bidder you can log into your dashboard to meet the reserve.
- 7 PAYMENT**
Via the selling agent's terms and conditions.
- 8 DELIVERY**
Arrange transport of livestock at your expense.

*Contact AuctionsPlus on (02) 9262 4222
or www.auctionsplus.com.au*

Australian Charolais breeders have embraced performance recording as other countries have reduced their efforts, I have seen this first hand in North America. Our data now is more accurate and detailed, making looking overseas less likely to add genetics that take your herd forward in genetic development than using **Australian evolved genetics that are the best in the world for our environments and markets** with large amounts of individual data to help us as seedstock producers, identify positive influences.

Glenlea Beef is now a large seedstock enterprise, including JV herds, totalling over 1,000 Charolais females. We have been using **Australian bred sires** to continue the evolution of the herd over the last 10 to 15 years with limited use of overseas sires. Where you will see overseas as well Australian sires in the Glenlea herd is in our E.T. program using **exclusive proven sires** in very specific planned matings to produce elite progeny from our highest genetic merit females, our donors!

Our genetic base of the Glenlea herd is now as diverse as the breed in Australia, with a blend of many bloodlines and different phenotypes to produce an Australian type Charolais. We have a degree of type variation, which is necessary with our range of markets and geographic footprint, from higher growth and yield types for northern markets over bos indicus cows to more moderate, early maturing types that suit more southern markets, but all assessed through the same process for all economic traits. This will be evident through the catalogue and comments, and EBV's on individual lots will highlight this.

Our breeding strategy is to produce powerful performance cattle in a medium to moderate frame score with a complete carcass. By that we mean above average yield, EMA, fat cover and IMF%. Measuring birthweights to be able to assist our bull clients to make the best selections for their operation and maintaining calving ease through BW and early gestation length.

Maternal strength focus on fertility, milking ability with great udders and moderate sized teats for longevity. While we are primary a terminal breed, in northern markets especially, Charolais x heifers are retained in their 1000's, so as seedstock producers we must always have our customers and in turn their customers in the front of mind in our breeding decisions, as those decisions ripple down the supply chain and leave big impacts, both positive and negative.

Polled genetics have progressed in our breed to match horned bloodlines for every economic trait. Our herd still has a number of horned females and these are joined to homozygous polled sires. 98% of our calves born in the last 5 years are polled, many homozygous, and all testing will be available in catalogue or supplementary sheet.

BREEDPLAN is a genetic evaluation tool now over 30 years old and proven across many breeds and countries. We no longer print a detailed general explanation in our catalogues for bull sales or female sales as that information is available at the touch of your phone screen or click of your mouse! We are happy to explain any of the finer points of EBV's as they relate to the Charolais breed and specifically to our cattle, just call and ask! In the comments of each lot, you will see our summary of the EBV's printed for that lot.

Customer Service is at the heart of what we do, we spend much of our time travelling to clients both commercial and stud to help with a full range of services. We provide many services to all our clients from the most basic to full stud breeding and marketing support. Your success is our success. We are here to assist and work with you and your agents to help you achieve the highest possible price for your Glenlea sired stock.

REFERENCE SIRE

GLENLEA KOWBOY RED Q405 (P) (R/F)

TATTOO: GLE Q405E

DOB: 28/03/2019

LT EASY BLEND 5125 PLD M705113 (OAU A5113E) (P)

SIRE: WON-CANYA KOWBOY (RJU K4E) (P/S)

ASHWOOD PARK GARNET (HAS G124E)

GLENLEA BIG GUN (GLE B10E) (P)

DAM: GLENLEA NOLANA 60TH (GLE G1E) (P/S)

GLENLEA NOLANA31ST R/F (GLE C20E)



Photo at 30 months



December 2024 Australasian Charolais Single-Step BREEDPLAN

	CE Dir	GL	BW	200	400	600
EBV	-11.2	+0.6	+3.3	+18	+35	+59
Acc	50%	70%	76%	65%	67%	70%
	Milk	SS	Carc Wt	EMA	Rump	IMF
EBV	+10	+0.9	+28	+0.0	-1.2	+0.0
Acc	44%	73%	57%	49%	55%	48%

COMMENTS: 99% progeny apricot from white cows, breed leading growth, overall carcass yield, his daughter's promise to be highly maternal, just have a look at lot 1!

Sire of lot 1, 76, 77 and all calves at foot on lots 78 to 102.

REFERENCE SIRE

GLENLEA QUINTUS (P)

TATTOO: GLE Q64E

DOB: 17/08/2019

RANGAN PARK REDEMPTION E42 (RAN E42E) (P)

SIRE: GLENLEA HONOURABLE (VLW H25E) (P)

FERNVALE CHIFFON (FEN C22E)

GLENLEA HI GUY (GLE H52E) (P)

DAM: ORARA WATERFALL GLENLEA NOLANA 10TH (WFAL42E)(P)

VALLEY VIEW NOLANA 52 (VLW H52E) (P)



Photo at 15 months



December 2024 Australasian Charolais Single-Step BREEDPLAN

	CE Dir	GL	BW	200	400	600
EBV	-17.4	-0.3	+3.9	+26	+45	+71
Acc	50%	73%	76%	69%	68%	70%
	Milk	SS	Carc Wt	EMA	Rump	IMF
EBV	+4	+0.8	+34	+2.6	+0.1	+0.9
Acc	53%	71%	57%	50%	55%	49%

COMMENTS: Our Quintus progeny have exceeded expectations. Breed leading growth, with amazing softness and leading IMF%. His progeny are so neatly made and still growthy with great carcass and great finish. **PP Polled**

His progeny feature as calves at foot on lots. 9,11,13,15,16, and rejoined to a number of the Scharwyn females.

REFERENCE SIRE

WATERFORD RED RASCAL (P) (R/F)

TATTOO: WET R121E

DOB: 25/01/2020

TEMANA GOLDEN LOGIE G66E (TJ G66E) (P)

SIRE: MOONGOOL MONOPOLY (DP2 M513E) (P)

MOONGOOL BUNYA VALE 4 (DP2 C155E) (P)

MOONGOOL ERNIE (DP2 E173E) (P)

DAM: WATERFORD YOU KAN KAN H57E (WET H57E) (P)

WATERFORD YOU KAN KAN E2 (WET E2E) (P)



Photo at 30 months



December 2024 Australasian Charolais Single-Step BREEDPLAN

	CE Dir	GL	BW	200	400	600
EBV	+0.8	-1.2	+0.4	+11	+30	+35
Acc	45%	59%	71%	62%	60%	61%
	Milk	SS	Carc Wt	EMA	Rump	IMF
EBV	+6	+0.3	+27	+1.8	-0.5	+0.0
Acc	46%	62%	48%	40%	48%	39%

COMMENTS: Mid maturity, high yielding types with seedstock quality. An impressive bull from every angle. Dam is a breeder of stud sires, sire is a champion at BEEF and Brisbane Royal in 2018. Our first draft of sons will sell later this year and will impress. This is his first offering of daughters with many cows back in calf to him. **PP Polled**
Sire of lots 72,73,75. Joined to lot 9 to 19 inclusive and a good number of Scharwyn lots.

REFERENCE SIRE

GLENLEA JUST RED (AI) (ET) (P) (R/F)

TATTOO: GLE J5E
DOB: 06/02/2013

HARVIE REDEMPTION 36P (P) (R/F) OACZ6641E (P)

SIRE: RANGAN PARK REDEMPTION E42 (RANE42E)(AI)(ET)(P)(R/F)

RANGAN PARK SHOWGIRL C7 (AI) (ET) RANC7E (H)

GLENLEA MEATBALL (P) GLEM44E (P)

DAM: GLENLEA JANET U6E (GLE U6E) (R/F) (P) (TW)

GLENLEA JANET N36E (AI) (P) GLEN36E (P)



Photo at
7 years

Running with cows.

		December 2024 Australasian Charolais Single-Step BREEDPLAN					
		CE Dir	GL	BW	200	400	600
EBV	-16.6	-0.3	+2.5	+17	+37	+50	
Acc	72%	87%	89%	82%	83%	84%	
		Milk	SS	Carc Wt	EMA	Rump	IMF
EBV	+6	-0.2	+25	+1.5	+0.6	+0.9	
Acc	70%	85%	72%	65%	72%	63%	

COMMENTS: The original GLENLEA RED sire. Homozygous Red and **PP Polled**, his progeny are all apricot colour and polled out of white charolais cows. His genetic value goes far beyond hide colour, a trait leader for all growth traits, with very positive fat cover so progeny fatten quickly. Sons have topped many sales including our Roma 2024 bull sale lot 1 \$21,000 and lot 2 \$22,000. Top priced female in Australia in 2021, her first daughter sells in this sale at lot 6.

Sire of lots 3,9, 18,31,

REFERENCE SIRE

TORRIE LODGE RASCAL (P)

TATTOO: BAP R3E
DOB: 22/09/2020

SILVERSTREAM EVOLUTION E168 (OAN E168E) (P)

SIRE: PALGROVE KANDOO K981E (PK K981E) (P)

PALGROVE NANETTE 109 (PK Z94E) (P)

WATERFORD GIBRALTAR G82E (WET G82E) (P)

DAM: CHENU KELLY 6 (RLK L2E) (P/S)

AIRLIE KELLY A132E (A1S A132E)



Photo at
30 months

		December 2024 Australasian Charolais Single-Step BREEDPLAN					
		CE Dir	GL	BW	200	400	600
EBV	-2.0	-2.0	+1.4	+8	+19	+27	
Acc	41%	62%	68%	62%	59%	58%	
		Milk	SS	Carc Wt	EMA	Rump	IMF
EBV	-2	+0.3	+18	+2.4	+1.0	+0.1	
Acc	47%	59%	46%	42%	47%	41%	

COMMENTS: New sire with a load of power, carcass and volume. Renowned bloodlines with heavy French influence and **PP Polled!** His first drop of calves an amazing draft of performance progeny about to wean.

His first progeny offered here are calves at foot.

REFERENCE SIRE

GLENLEA ULYSSES RED U16 (P) (R/F)

TATTOO: GLE 23U16E
DOB: 05/02/2023

GLENLEA HONOURABLE (VLW H25E) (P)

SIRE: GLENLEA HONORABLE P80 (GLE P80E) (P)

PALGROVE NANETTE 190 E431E (PK E431E)

THW DEE V8 (THW D19E) (P/S)

DAM: VALLEY VIEW MISS ESTELLA (VLW G58E) (P)

VALLEY VIEW C004 ESTELLA 145 (VLW C4E) (P)



Photo at
19 months

		December 2024 Australasian Charolais Single-Step BREEDPLAN					
		CE Dir	GL	BW	200	400	600
EBV	-1.4	-1.9	+1.3	+9	+17	+25	
Acc	35%	58%	66%	60%	58%	64%	
		Milk	SS	Carc Wt	EMA	Rump	IMF
EBV	+4	+0.8	+17	+3.0	+0.2	-0.3	
Acc	43%	69%	51%	44%	46%	42%	

COMMENTS: A bull that is so correct, and neatly put together, perfect hip, spine and tail set, with great thickness through the rump and loin, while still having a smooth shoulder set. Moderate BW a yearling sire we have retained to join our red charolais program, **PP Polled**, Homozygous Red. We have high expectations of this bull, excellent bloodlines full of performance cattle. **He is joining sire to Scharwyn "T" 1st calvers Lots 65 to 68. They will be amongst the first progeny born from this exciting new sire.**

Sires of Influence



Age in photo
5 years.

Challambi Muscles (PP)
CHA M15E

Sire of lot 2, 29 and 34.



Age in photo
3 years

Spinifex Blackjack (P)
SPI Q1E

Sire of lots 25, 48, 49 and 61.



Age in photo
18 months

Liberty Shadow Boxer (PP)
Y1K S12E

Sire of several calves at foot & weaned calves.



Age in photo
20 months

Rangan Park Tambo (PP)
RAN R37E

Sire of many calves at foot & weaned calves.



Age in photo
24 months

Glenlea Sonny (PP)
GLE S339E

Joining Sire to lots 2, 3, 4 and 5.



Age in photo
24 months

MAW / Glenlea Taurus Red (PP) R/F
MAW 22T940E

Joining sire to Lots 8, 20 and 21.

Elite Heifers and Cows & Calves

The opening lots of the sale showcase the very best of our joined red factor heifers, combining top-tier genetics, exceptional quality, and tremendous value for both existing and new clients. From start to finish, the offerings at this 2025 Glenlea Heart of the Herd sale are designed to enhance any herd with performance and longevity.

Lots 1 to 7: Elite Heifers with Proven Genetics

- ▶ Lot 1 features an outstanding Glenlea Kowboy first-calver with a promising heifer calf at foot, setting the tone for the sale.
- ▶ Lots 2–7 include heifers from our leading cow families, offering a blend of old and new bloodlines designed to produce exceptional progeny for years to come. These females are backed by generations of performance genetics.
- ▶ Lots 2–5, due to calve prior to or just after this sale, are joined to Glenlea Sonny (PP) GLE S339E, the top-priced bull from our 2023 Roma sale, purchased by Moondoogundi Charolais in the Mudgee district in central NSW, where Mitch Redding and Sarah Forgione are building a great stud herd. Sonny combines eye appeal, carcass traits, and ease of calving. His maternal sister was the Junior Champion Female at Beef 2021 and now serves as a donor cow for Tallimba Charolais in the Hunter Valley.
- ▶ Lots 6 and 7 are due to calve from July to another outstanding sire, Taylor Glenlea The Wind Maker (PP) TC3 22T8E. Selected for low birth weight and exceptional carcass data, he is also the sire of the heifer calf at foot with Lot 1. Expect to see much more from this exciting new outcross sire.

Lots 8 to 21: Selected Cows & Calves

These young cows, selected from multiple mobs, represent the best of performance bloodlines and are accompanied by outstanding calves at foot. Many of the calves are ready to wean, with several showing sire and show heifer potential.

- ▶ Older calves feature progeny of Glenlea Quintus (PP) GLE Q64E, a performance champion with growth EBVs in the top 1% of the breed, as well as exceptional EMA and IMF rankings. Quintus progeny are remarkable for their balance of growth, muscle, and carcass quality.
- ▶ Younger calves feature new sire Torrie Lodge Rascal (PP) BAP R3E, a powerful carcass sire whose first crop of calves are already making an impression.

This offering is a rare opportunity to secure premium females with exceptional calves at foot, backed by generations of breeding excellence. Whether you're looking to start or strengthen your herd, these lots deliver unmatched potential and performance.



LOT 14

Show prospect heifer. Sired by AI sire Belbourie Park Royalty (PP) (BEL R4E). Dam a high-performance first calver from the renowned Josie cow family.



LOT 18

Big-volumed, PP polled red factor cow from the Estella cow family. Maternal sister to Glenlea Ulysses Red (PP) R/F GLE 23U16E, the new PP polled Glenlea Red stud sire.

LOT
1

MAW GLENLEA
GINA 3RD (P) (R/F)

TATTOO: MAW 22T33E
DOB: 03/09/2022

WON-CANYA KOWBOY (RJU K4E) (P/S)
SIRE: GLENLEA KOWBOY RED Q405 (GLE Q405E) (P)
GLENLEA NOLANA 60TH (GLE G1E) (P/S)

PALGROVE HERMES (PK H549E) (P)
DAM: WATERFORD LADY GINA L33E (WET L33E) (P)
DSK MY GINA D23E (DSK D23E) (P)

December 2024 Australasian Charolais Single-Step BREEDPLAN

	CE Dir	GL	BW	200	400	600	Milk	SS	Carc Wt	EMA	Rump	IMF
EBV	-3.1	+0.8	+2.2	+13	+25	+35	+3	+0.3	+18	+0.2	+0.6	-0.1
Acc	34%	60%	66%	61%	62%	65%	39%	60%	52%	40%	47%	39%

COMMENTS: Our oldest Kowboy daughter, with her 1st calf from an outstanding cow family. The growth, natural docility, easy finishing ability, udder quality is evident. Generations of this cow family have been show champions and high sellers whenever offered for sale. Glenlea retains her dam, and a maternal sister. Heifer calf is an outstanding calf that has growth and muscle from a moderate BW.



DNA Tested Polled

Offered unjoined ready to flush or A.I.

LOT
2

GLENLEA
ELSA 76TH (P) (R/F)

TATTOO: GLE 22T130E
DOB: 14/11/2022

LT VENTURE 3198 (OAU J5612E) (P)
SIRE: CHALLAMBI MUSCLES (CHA M15E) (P)
ROSEDALE HIGHNESS G114E (MR G114E) (P)

GLENLEA JUST RED (GLE J5E) (P)
DAM: GLENLEA ELSA 118TH (GLE R25E) (P)
ORARA WATERFALL GLENLEA ELSA 3RD (WFA M39E) (P)

December 2024 Australasian Charolais Single-Step BREEDPLAN

	CE Dir	GL	BW	200	400	600	Milk	SS	Carc Wt	EMA	Rump	IMF
EBV	-4.1	-2.5	-0.5	+15	+33	+44	+11	+0.8	+28	+2.0	+1.6	+0.5
Acc	39%	55%	61%	57%	55%	55%	42%	56%	45%	41%	47%	40%

COMMENTS: Outstanding red heifer, photo shows all about her phenotype. Long, soft and well-muscled, Perfect udder development. From one of our oldest cow families, Elsa's, any stud charolais breeder would like her in their herd. Her sire left us with amazing daughters like T130 and she will breed high value stud progeny.



DNA tested PP Polled

Will calve February / March

LOT
3

GLENLEA
ADWANA 30TH (P) (R/F)

TATTOO: GLE 22T132E
DOB: 02/12/2022

RANGAN PARK REDEMPTION E42 (RAN E42E) (P)
SIRE: **GLENLEA JUST RED (GLE J5E) (P)**
GLENLEA JANET U6E R/F (GLE U6E) (P)

GLENLEA JUST RED (GLE J5E) (P)
DAM: **GLENLEA ADAWNA 5TH (GLE M106E) (P)**
MIXHILL ADAWNA (MIX A455E)

December 2024 Australasian Charolais Single-Step BREEDPLAN												
	CE Dir	GL	BW	200	400	600	Milk	SS	Carc Wt	EMA	Rump	IMF
EBV	-11.7	-1.0	+1.9	+15	+32	+45	+8	+0.4	+22	+1.1	+0.7	+0.5
Acc	48%	61%	67%	60%	59%	59%	47%	59%	49%	44%	49%	43%

COMMENTS: How can we sell heifer's like this? Simply because we want to offer from the top at our sales and share the generations of breeding selection we have put into our cattle. T132 is from relatively new cow family that is performing. Maternal sister topped the Charnelle invitation sale in 2022 at \$16,000 and Glenlea retain a full sister.



DNA tested PP Polled

Will calve February / March

LOT
4

GLENLEA
POSEY 5TH (P) (R/F)

TATTOO: GLE 22T254E
DOB: 04/12/2022

GLENLEA JUST RED (GLE J5E) (P)
SIRE: **GLENLEA PHEONIX (GLE P41E) (P)**
VALLEY VIEW ESTELLA 416 (VLW H26E) (P)

PALGROVE CELTIC (PK C632E) (P)
DAM: **LVH-FAIRFIELD POSEY J5 (LVH J5E) (P)**
LVH-FAIRFIELD POSEY (LVH C61E) (P)

December 2024 Australasian Charolais Single-Step BREEDPLAN												
	CE Dir	GL	BW	200	400	600	Milk	SS	Carc Wt	EMA	Rump	IMF
EBV	-4.3	-1.7	+1.8	+17	+35	+52	+8	+1.4	+29	+2.3	+0.7	+0.2
Acc	35%	52%	59%	53%	52%	52%	36%	54%	42%	38%	41%	37%

COMMENTS: The most powerful heifer of these joined heifers, and her data reflects that. From a leading cow family from the Fairfield herd that Glenlea purchased in 2021. So gentle in her nature, perfect udder development, very fine hair type, a female to produce sale topping bulls. We have retained a maternal sister and her dam.



DNA Tested Polled

Will calve February / March

LOT
5

GLENLEA
ESTELLA 49TH (AI) (P) (R/F)

TATTOO: GLE 22T120E
DOB: 29/08/2022

SPARROWS FARGO 811U (PED D4935E) (P)
SIRE: RBM FARGO Y111 (OAU G9088E) (P)
HC RHINESTONE 5100 (PED A6859E) (P)

GLENLEA JUST RED (GLE J5E) (P)
DAM: GLENLEA ESTELLA 25TH (GLE R30E) (P) (R/F)
VALLEY VIEW MISS ESTELLA (VLW G58E) (P) (R/F)

December 2024 Australasian Charolais Single-Step BREEDPLAN												
Charolais	CE Dir	GL	BW	200	400	600	Milk	SS	Carc Wt	EMA	Rump	IMF
EBV	-4.9	-1.5	+0.5	+15	+28	+36	+6	+1.3	+23	+1.9	+2.3	0.0
Acc	40%	67%	66%	62%	61%	60%	38%	60%	49%	43%	52%	42%

COMMENTS: Bomb proof temperament, extremely easy doing, such balanced EBV's across all traits as all these elite heifers have. From one of the most recognized cow families in Australia, would be easy to break this heifer in to show as a cow. Sire is a USA bull known for very easy finishing progeny and low BW and above average growth.



DNA tested PP Polled

Will calve February / March

LOT
6

ASHDAN GLENLEA
ISABELLA 1ST (AI) (P)

TATTOO: ADB 22T2E
DOB: 15/12/2022

SPARROWS FARGO 811U (PED D4935E) (P)
SIRE: RBM FARGO Y111 (OAU G9088E) (P)
HC RHINESTONE 5100 (PED A6859E) (P)

GLENLEA JUST RED (GLE J5E) (P)
DAM: GLENLEA ISABELLA 14TH (GLE R24E) (P)
GLENLEA ISABELLA 2ND (GLE L22E) (P)

December 2024 Australasian Charolais Single-Step BREEDPLAN												
Charolais	CE Dir	GL	BW	200	400	600	Milk	SS	Carc Wt	EMA	Rump	IMF
EBV	-3.9	-2.4	+1.1	+22	+41	+50	+5	+1.7	+29	+1.6	+4.0	+0.3
Acc	41%	72%	74%	68%	67%	65%	42%	65%	52%	45%	56%	45%

COMMENTS: The incredible softness is this heifer is amazing. She is the first calf of the highest price charolais female in Australia in 2021 to be offered for sale. Light red factor, her hide color has faded but she has the red gene. Australia wide known cow family, very strong maternal traits, along with the performance to breed sale topping bulls. Top 1% Fat cover EBV's, top 10% growth.



DNA tested PP Polled

Due to calve July / August to
Taylor Glenlea the Wind Maker (PP) TC3 22T8E

LOT
7

GLENLEA
CHAROL 160TH (AI) (P)

TATTOO: GLE 22T1171E
DOB: 27/08/2022

SPARROWS FARGO 811U (PED D4935E) (P)
SIRE: RBM FARGO Y111 (OAU G9088E) (P)
HC RHINESTONE 5100 (PED A6859E) (P)

GLENLEA PISTOL (GLE P55E) (P)
DAM: GLENLEA CHAROL 130TH (GLE R31E) (P)
ALLEDNAW CAROL P82 (AKT P82E) (P)



December 2024 Australasian Charolais Single-Step BREEDPLAN

	CE Dir	GL	BW	200	400	600	Milk	SS	Carc Wt	EMA	Rump	IMF
EBV	+0.5	-2.1	-0.2	+12	+20	+21	+5	+1.5	+19	+2.4	+2.3	-0.4
Acc	40%	73%	68%	66%	64%	62%	41%	61%	49%	43%	53%	42%

COMMENTS: We wanted to add a Charol cow family heifer to this first group in the sale, this heifer matched the criteria. An early maturing type, lots of carcass and very docile. Bloodlines full of leading sires and dams. The Charol's are one of our oldest and most prolific cow families, topping many of our sales in the past including our 2022 sale when a Charol heifer sold for \$15,000.



DNA tested PP Polled

Due to calve July / August to
Taylor Glenlea the Wind Maker (PP) TC3 22T8E

Note this cow under different management & nutrition along with lots 20 & 21 at Nowra south coast NSW.

LOT
8

GLENLEA
FRIESIA 11TH (AI) (ET) (P)

TATTOO: GLE Q904E
DOB: 04/05/2019

MD ALI TRADE U1059 (PED D1059E) (P)
SIRE: WINN MANS SKAGGS 663X (OAC F663E) (P)
WINN MANS BEVERLY 663S (PED B663E)

WCR SIR FA MAC 2244 (OAU B2244E) (P)
DAM: CHARNELLE FRIESIA 4 (GKA H34E) (P)
PALGROVE FRIESIA 19 (PK Y224E) (P)



December 2024 Australasian Charolais Single-Step BREEDPLAN

	CE Dir	GL	BW	200	400	600	Milk	SS	Carc Wt	EMA	Rump	IMF
EBV	+3.4	-3.4	-0.4	+11	+23	+25	+8	+0.7	+19	+1.9	+1.6	+0.0
Acc	52%	73%	75%	72%	69%	68%	64%	68%	58%	53%	59%	52%

COMMENTS: Big volumed, easy doing, thick bodied cow. Balanced EBV's, excellent carcass traits, Prominent cow family, joined to A.I. three years in a row. Very rare for a WM Skaggs sired cow to come on the open market. 1 retained daughter, rising 2 year is a lead bull for our Roma bull sale in September. She was broken in as a heifer, and could be shown. We have gone to the heart of the herd to offer this cow. CAF Powerful polled bull calf. Sire prospect or lead sale bull. Ready to wean.



CALF: BIG GUN 5TH (AI) (P) (TC3 24V14E) DOB: 10/08/2024 SIRE: GLENLEA BIG GUN (GLE B10E) (P)

Rejoined from 7/11/24 PTIC
to MAW GLENLEA TAURUS RED T940 (PP) R/F

Lot 9 to 19 located sub-tropical North coast NSW. (Excluding lot 10)

LOT
9

GLENLEA
REBBY 27TH (P) (R/F)

TATTOO: GLE R75E
DOB: 25/11/2020

RANGAN PARK REDEMPTION E42 (RAN E42E) (P)

TATTENHALL IMPECCABLE I26 (IAE I6190F)

SIRE: GLENLEA JUST RED (GLE J5E) (P)

DAM: GLENLEA REBBY 21ST (GLE N13E) (P)

GLENLEA JANET U6E R/F (GLE U6E) (P)

VALLEY VIEW REBBY BRAVO 17TH (VLW J1E) (P)

COMMENTS: Lovely big strong JR daughter, depth of body, great udder, high performance young cow, breed leading EBV's, nationally renowned cow family. Had twin bulls as a heifer which will feature in our Winton bull sale in July. We selected from the heart of the herd with these cows and calves and this unit is especially hard to offer. **DNA tested PP Polled**

CAF Powerful bull calf. Sire prospect or lead sale bull. Ready to wean.

DNA tested PP Polled

CALF: QUINTUS V457 (P) (GLE 24V457E) **DOB:** 21/06/2024 **SIRE:** GLENLEA QUINTUS (GLE Q64E) (P)



December 2024 Australasian Charolais Single-Step BREEDPLAN

	CE Dir	GL	BW	200	400	600	Milk	SS	Carc Wt	EMA	Rump	IMF
EBV	-6.7	-1.0	+1.7	+15	+23	+39	+6	+1.4	+16	+1.0	+1.1	+0.7
Acc	47%	67%	72%	65%	64%	63%	49%	64%	51%	47%	52%	45%



Rejoined from 21/9/24 PTIC
to Waterford Red Rascal (PP) R/F WET R121E



LOT
10

GLENLEA
MASEY 3RD (P)

TATTOO: GLE S302E
DOB: 03/01/2021

GALLWAY - RS (OAF G1063F) (P)

LITTLE VALLEY GRANDIOSE (GKB G5E) (P)

SIRE: CHARNELLE LOUIS (GKA L73E) (P)

DAM: ORARA WATERFALL GLENLEA MASEY 1ST (WFA M21E) (P)

CHARNELLE ELLE (GKA E10E) (P)

JACKSON GRETA (MEJ G10E) (P)

COMMENTS: One of only two Louis daughters in the sale, beautiful young cow, soft and thick like all louis progeny, excellent EBV's with moderate BW, good growth and excellent carcass data. Her cow family is the "Ideal's" once of Palgrove's oldest. **DNA tested PP Polled.** This cow was run in a small group at our Dorrigo property, so she has had better nutrition than other cows and calves lot 9 to 19. Hence heavier condition. CAF Thumping bull calf by new sire Torrie Lodge Rascal (PP) **DNA tested PP Polled.**

CALF: RASCAL V108 (P) (GLE 24V108E) **DOB:** 14/10/2024 **SIRE:** TORRIE LODGE RASCAL (BAP R3E) (P)



December 2024 Australasian Charolais Single-Step BREEDPLAN

	CE Dir	GL	BW	200	400	600	Milk	SS	Carc Wt	EMA	Rump	IMF
EBV	-2.5	-3.0	+0.5	+8	+19	+28	+9	+0.4	+16	+2.3	+0.8	+0.7
Acc	44%	60%	67%	59%	57%	57%	46%	58%	47%	40%	46%	40%



Rejoined from 21/9/24 PTIC
to Waterford Red Rascal (PP) R/F WET R121E



LOT
11

HUON
ESTELLA 36 (AI) (ET) (P)

TATTOO: DG1 S1E
DOB: 13/02/2021

MERIT ROUNDUP 9508W (OAC E6558E) (P)
SIRE: RANGAN ROUNDUP K18 (RAN K18E) (P)
RANGAN PARK ALETTA H57 (RAN H57E) (P)

MD SENTINAL RULER G1520 (OAU S9416E) (P/S)
DAM: PALGROVE ESTELLA 336 (PK F334E)
PALGROVE ESTELLA 269 (PK C1182E) (P)

COMMENTS: Outcross young cow

to our herd, acquired as part of the purchase on the Huon herd in 2021, this female was the lead ET heifer. Genuine curve bender, very low BW, above average growth, strong maternal and great carcass. Dam is a donor and was top priced female at the 2017 Palgrove sale, selling for \$18,000. Nationally recognized cow family. Located in sub-tropical North Coast NSW. **DNA Tested Polled** CAF thick bodied, early maturing, low BW. Ready to wean. **DNA tested PP Polled.**

CALF: QUINTUS V459 (P) (GLE 24V459E)
DOB: 04/07/2024 SIRE: GLENLEA QUINTUS (GLE Q64E) (P)



December 2024 Australasian Charolais Single-Step BREEDPLAN

	CE Dir	GL	BW	200	400	600	Milk	SS	Carc Wt	EMA	Rump	IMF
EBV	+4.3	-3.2	-2.0	+11	+24	+33	+11	+1.5	+24	+2.4	-0.2	+0.1
Acc	49%	69%	75%	67%	65%	70%	56%	67%	58%	48%	61%	49%



Rejoined from 21/9/24 PTIC
to Waterford Red Rascal (PP) R/F WET R121E

LOT
12

CLARINDA
DUTY CARRISSA (AI) (P)

TATTOO: KEN 22T19E
DOB: 07/03/2022

PLEASANT DAWN MVP 316Y (PED G316E) (P)
SIRE: TURNBULLS DUTY-FREE 358D (OAC M1309E) (P)
CTP MISS GOOGLE 358Z (PED H9808E) (P)

DSK WW AUSSIE GOLD A11E (DSK A11E) (P)
DAM: DSK A11 CARISSA J31E (DSK J31E)
DSK E18 CARISSA G41E (DSK G41E) (P)

COMMENTS: Outstanding 1st

calver purchased as a heifer calf from the Clarinda dispersal in 2023, daughter of the very popular Duty Free bull that has produced a number of champions in the show ring and high selling sons around the country. Curve bending data, even more than previous lot. Dam is an outstanding DSK bred cow that was purchased back by DSK from the Clarinda dispersal! Located in sub-tropical North Coast NSW. **DNA Tested Polled.** CAF Outstanding early maturing, low BW bull calf. Stud heifer bull prospect. **DNA tested PP Polled.**

CALF: ASHWOOD V440 (P) (GLE 24V440E) DOB: 29/04/2024
SIRE: MAW GLENLEA ASHWOOD S38 (MAW S38E) (P)



December 2024 Australasian Charolais Single-Step BREEDPLAN

	CE Dir	GL	BW	200	400	600	Milk	SS	Carc Wt	EMA	Rump	IMF
EBV	+4.1	-6.0	-1.1	+17	+31	+40	+13	+2.2	+22	+0.1	+1.7	-0.4
Acc	48%	74%	73%	65%	67%	64%	51%	61%	56%	47%	62%	48%



Rejoined from 21/9/24 PTIC
to Waterford Red Rascal (PP) R/F WET R121E

LOT
13

GLENLEA
LOLA 2ND (P)

TATTOO: GLE S651E
DOB: 13/02/2021

VERNOLA JUST RIGHT J6E (VIW J6E) (P/S)
SIRE: ALLEDNAW GLENLEA MARLO (AKT M41E) (P)
CANOONA EMMA A3 (IGV A3E) (P)

GLENLEA HILTON (GLE H30E) (P)
DAM: ORARA WATERFALL LOLA (WFA L27E) (P)
GOODVIEW BARDOT (HEL B6E) (P)

COMMENTS: High performance young cow, deep bodied, raised a great calf, powerful set of data. Dam is an outstanding cow growth, muscle and milk, all the key ingredients to raise sale topping bulls. Marlo produced early maturing progeny with great carcass, this daughter is one of his best. Located in sub-tropical North Coast NSW.

CAF Powerful performance bull. Sire prospect or lead sale bull.
DNA tested PP Polled.

CALF: QUINTUS V116 (P) (GLE 24V116E) **DOB:** 01/07/2024 **SIRE:** GLENLEA QUINTUS (GLE Q64E) (P)



December 2024 Australasian Charolais Single-Step BREEDPLAN

	CE Dir	GL	BW	200	400	600	Milk	SS	Carc Wt	EMA	Rump	IMF
EBV	+1.5	-1.7	+1.4	+15	+27	+43	+6	+1.2	+23	+1.5	+0.0	-0.1
Acc	30%	47%	54%	50%	47%	50%	36%	52%	39%	35%	37%	34%



Rejoined from 21/9/24 PTIC
to Waterford Red Rascal (PP) R/F WET R121E



LOT
14

GLENLEA
JOSIE 15TH (P)

TATTOO: GLE 22T5E
DOB: 19/02/2022

RANGAN PARK RIO BRAVO D15 (RAN D15E) (P)
SIRE: GLENLEA KENWORTH (GLE K80E) (P)
THW TATT MAC D10E (THW D10E) (P)

GLENLEA HILTON (GLE H30E) (P)
DAM: ORARA WATERFALL GLENLEA JOSIE 2ND (WFA L11E) (P)
GOBONGO JOSIE F34E (GO F34E)

COMMENTS: Our highest growth female in the sale, first calver, length, frame and volume. She has raised a thumping heifer calf through winter giving everything to her calf like you want in a productive cow. Her body condition is lighter as result but calf is what to measure her by. Heaviest heifer calf in the sale! Outstanding EBV's will fill out into a magnificent big polled cow. the "Josie" cow family has been great producers for us, her dam still in our herd. Lead female, in show condition would be very competitive. Located in sub-tropical North Coast NSW. **DNA Tested Polled.** CAF Show prospect heifer, with amazing data set. **DNA tested PP Polled.**
CALF: JOSIE 10TH (AI) (P) (GLE 24V430E) **DOB:** 16/03/2024
SIRE: BELBOURIE PARK ROYALTY (BEL R4E) (P)



December 2024 Australasian Charolais Single-Step BREEDPLAN

	CE Dir	GL	BW	200	400	600	Milk	SS	Carc Wt	EMA	Rump	IMF
EBV	-0.9	-3.3	+2.2	+18	+35	+52	+7	+2.5	+28	+2.4	+0.1	+0.2
Acc	43%	63%	72%	64%	61%	60%	47%	58%	47%	41%	48%	40%



Rejoined from 21/9/24 PTIC
to Waterford Red Rascal (PP) R/F WET R121E

LOT
15

GLENLEA
JANET 128TH (P)

TATTOO: GLE R57E
DOB: 16/09/2020

FERNVALE FLIP (FEN F4E) (P)

SIRE: LVH-FAIRFIELD LETHAL (LVH L220E) (P)
LVH-FAIRFIELD AGINA (LVH D7E)

VIOLET HILLS WINTON (VHV W74E)

DAM: GLENLEA JANET Z8E (GLE Z8E) (P)
GLENLEA JANET U6E R/F (GLE U6E) (P)

COMMENTS: Young cow, direct daughter of Janet Z8, dam of studs sires "Pitfire" and "Quarterback" last natural calf from this great cow, and one of Glenlea's most prolific cow families. Led female, perfect udder, feminine, bomb proof temperament, her 1st bull calf is a lead bull for our Winton bull sale in July. Sire's genetics is full of old Fernvale breeding rare to find in a young cow today. 3 sisters retained. Located in sub-tropical North Coast NSW. **DNA tested PP Polled.** CAF outstanding show prospect and elite replacement heifer. **DNA tested PP Polled**



December 2024 Australasian Charolais Single-Step BREEDPLAN

	CE Dir	GL	BW	200	400	600	Milk	SS	Carc Wt	EMA	Rump	IMF
EBV	-4.8	-1.9	+1.5	+9	+19	+27	+7	+0.0	+12	+0.3	-0.2	+0.4
Acc	45%	58%	71%	57%	55%	56%	48%	49%	45%	39%	43%	38%



CALF: JANET 163RD (P) (GLE 24V460E)
DOB: 10/07/2024 SIRE: GLENLEA QUINTUS (GLE Q64E) (P)

Rejoined from 21/9/24 PTIC
to Waterford Red Rascal (PP) R/F WET R121E

LOT
16

JAY TEES
REAL GEM (AI) (P)

TATTOO: JT R28E
DOB: 09/11/2020

FORGEOT (OAF F998F) (P)

SIRE: ICEBERG P (OAF J721F) (P)
FLAMME F4887F (PED F4887F)

JAY TEES LANCELOT (JT L14E)

DAM: JAY TEES NACREOUS (JT N11E)
JAY TEES ZIRCONIA (JT Z13E) (P)

COMMENTS: Big strong young polled cow, by Polled French sire "Iceberg" extra carcass yield, slick hair type, strong polled head. Dam is a leading cow in the JT herd with that cow family their best. Her first Bull calf by "Kowboy" will be a feature in our Winton bull sale in July. Located in sub-tropical North Coast NSW. **DNA Tested Polled.**



December 2024 Australasian Charolais Single-Step BREEDPLAN

	CE Dir	GL	BW	200	400	600	Milk	SS	Carc Wt	EMA	Rump	IMF
EBV	-3.2	+0.2	+1.3	+10	+23	+29	+6	-0.2	+21	+2.1	-1.0	
Acc	44%	73%	70%	54%	53%	53%	41%	38%	39%	26%	28%	



CAF classy polled heifer, ready to wean.
DNA tested PP Polled

CALF: REAL GEM 2ND (P) (GLE 24V455E)
DOB: 01/06/2024
SIRE: GLENLEA QUINTUS (GLE Q64E) (P)

Rejoined from 21/9/24 PTIC
to Waterford Red Rascal (PP) R/F WET R121E

LOT
17

SILVERWOOD
QWYN (P) (R/F)

TATTOO: 5EB Q76E
DOB: 19/08/2019

CHARNELLE KENTUCKY (GKA K19E) (P)

PONDAOVA CHAD (G8B C52E) (P)

SIRE: CHARNELLE MCENROE (GKA M50E) (P)

DAM: SILVERWOOD MICHELLE (5EB M97E) (P)

CHARNELLE ANGEL 2 (GKA J20E) (P)

SILVERWOOD GEORGIA (5EB G22E) (P/S)

COMMENTS: This unit we selected for the sale for the outstanding show/replacement heifer calf by "Red Rascal".

We purchased this cow as a heifer as an outcross to our Red charolais breeding program. Deep bodied, big strong cow, lovely udder, very maternal type. Dam powerful red cow from a leading cow family at Silverwood charolais. Being dark red she will breed Apricot calves to a white sire. Great unit to start your red charolais breeding program. Located in sub-tropical North Coast NSW. **DNA Tested Polled.** CAF stunning thick bodied heifer. **DNA tested PP Polled.**



December 2024 Australasian Charolais Single-Step BREEDPLAN

	CE Dir	GL	BW	200	400	600	Milk	SS	Carc Wt	EMA	Rump	IMF
EBV	-0.3	-0.6	+0.5	+6	+16	+13	+0	+1.1	+11	+0.7	+1.3	-0.1
Acc	34%	56%	69%	58%	54%	53%	37%	51%	38%	33%	37%	31%



Rejoined from 21/9/24 PTIC
to Waterford Red Rascal (PP) R/F WET R121E

CALF: QYWN 2ND (P) (R/F) (GLE 24V471E) DOB: 08/10/2024
SIRE: WATERFORD RED RASCAL (WET R121E) (PP)

LOT
18

GLENLEA
ESTELLA 25TH (P) (R/F)

TATTOO: GLE R30E
DOB: 18/06/2020

RANGAN PARK REDEMPTION E42 (RAN E42E) (P)

THW DEE V8 (THW D19E) (P/S)

SIRE: GLENLEA JUST RED (GLE J5E) (P)

DAM: VALLEY VIEW MISS ESTELLA (VLW G58E) (P)

GLENLEA JANET U6E R/F (GLE U6E) (P)

VALLEY VIEW C004 ESTELLA 145 (VLW C4E) (P)

COMMENTS: Easy doing, long bodied, perfect udder, a maternal sister to our latest Glenlea Red sire, Glenlea Ulysses (PP) R/F joining sire in this sale. Dam was an outstanding dam with the best of French and USA genetics. This female will breed apricot calves by white sires and what a pair with the previous lot to start or add to a red charolais breeding program! Located in sub-tropical North Coast NSW. **DNA tested PP Polled.** CAF lovely heifer, had setback (scours) but powering along now. **DNA tested PP Polled.**



December 2024 Australasian Charolais Single-Step BREEDPLAN

	CE Dir	GL	BW	200	400	600	Milk	SS	Carc Wt	EMA	Rump	IMF
EBV	-4.9	-2.0	+0.9	+10	+21	+29	+8	+0.2	+17	+2.0	+0.1	+0.4
Acc	46%	63%	71%	62%	63%	62%	47%	60%	53%	46%	57%	46%



Rejoined from 21/9/24 PTIC
to Waterford Red Rascal (PP) R/F WET R121E

CALF: ESTELLA 77TH (P) (R/F) (GLE 24V117E)
DOB: 26/10/2024 SIRE: TBA

LOT
19

HUON
DIGIT 18 (P)

TATTOO: DG1 R5E
DOB: 19/03/2020

RANGAN PARK PINAY F21 (RAN F21E) (P)
SIRE: RANGAN PINAY F21 N171 (RAN N171E) (P)
RANGAN ALETTA J67 (RAN J67E) (P)

PALGROVE ACADEMY (PK A168E)
DAM: PALGROVE F125E (PK F125E) (P)
PALGROVE DIGIT 51 (PK Y244E) (P)

COMMENTS: Great young cow, long bodied, great carcass yield, perfect udder, from nationally recognized cow family. We have retained two daughters. Low birthweight, great calving ease and gestation with strong maternal data, top 1% of breed for Milk. Outstanding heifer calf at foot. Located in sub-tropical North Coast NSW. **DNA tested PP Polled**

CAF outstanding heifer calf. **DNA tested PP Polled**

CALF: DIGIT 21ST (P) (GLE 24V118E)
DOB: 27/10/2024 **SIRE:** TORRIE LODGE RASCAL (BAP R3E) (P)



December 2024 Australasian Charolais Single-Step BREEDPLAN

	CE Dir	GL	BW	200	400	600	Milk	SS	Carc Wt	EMA	Rump	IMF
EBV	+7.4	-3.4	-0.7	+1	+12	+12	+14	+0.7	+10	+0.5	-1.4	+1.0
Acc	46%	65%	73%	66%	66%	63%	53%	65%	54%	48%	59%	48%



Rejoined from 21/9/24 PTIC
to Waterford Red Rascal (PP) R/F WET R121E

Note this cow under different management & nutrition along with lots 8 & 21 at Nowra south coast NSW.

LOT
20

CALMVIEW
POPPY Q5E (P)

TATTOO: CVW Q5E
DOB: 20/02/2019

LT RIO BRAVO 3181 P (OAU Y5507E) (P)
SIRE: ASCOT JACK FLASH J105E (JAJ J105E) (P)
GOBONGO JULIETTE B43E (GO B43E) (P)

SILVERSTREAM GEDDES G102 (OAN G102D) (P)
DAM: CALMVIEW POPPY M55E (CVW M55E)
CALMVIEW POPPY J05E (CVW J5E) (P)



December 2024 Australasian Charolais Single-Step BREEDPLAN

	CE Dir	GL	BW	200	400	600	Milk	SS	Carc Wt	EMA	Rump	IMF
EBV	+8.5	-4.9	-2.1	+16	+35	+40	+9	+1.7	+27	+1.3	+1.7	+0.7
Acc	49%	65%	70%	64%	61%	60%	59%	53%	49%	41%	45%	40%

COMMENTS: Big volumed, easy doing, good carcass, perfect udder. A curve bender with her data, low BW with excellent growth, her first 3 calves all by A.I. 1 daughter retained and like lot 8 and 21 is located at Nowra.

CAF thick bodied polled heifer.

CALF: POPPY 6TH (P) (TC3 24V18E)
DOB: 01/11/2024 **SIRE:** TAYLOR GLENLEA FARGO (TC3 22T14E) (P)



Rejoined from 7/11/24 PTIC
to MAW GLENLEA TAURUS RED T940 (PP) R/F

Note this cow under different management & nutrition along with lots 8 & 20 at Nowra south coast NSW.

LOT
21

CHARNELLE FESTOON 16 (AI) (P) (R/F)

TATTOO: GKA R41E
DOB: 29/10/2020

ELDER'S BLACKJACK 788B (OAC K788E) (P)
SIRE: **CHARNELLE PANAMA (GKA P25E) (P)**
CHARNELLE ELLE (GKA E10E) (P)

CHARNELLE FEDERATION (GKA F29E) (P)
DAM: **CHARNELLE FESTOON 5 (GKA H58E) (P/S)**
PALGROVE FESTOON 55 (PK T91E)

December 2024 Australasian Charolais Single-Step BREEDPLAN

	CE Dir	GL	BW	200	400	600	Milk	SS	Carc Wt	EMA	Rump	IMF
EBV	+1.2	-4.0	+1.3	+15	+30	+50	-3	+2.9	+26	+1.5	+0.7	-0.6
Acc	52%	73%	73%	68%	65%	64%	59%	60%	52%	44%	50%	43%

COMMENTS: Big strong, long bodied red factor polled cow, fine hair type. Excellent growth EBV's. **DNA Tested Polled.**

CAF stylish polled heifer by Taylor Glenlea Fargo (PP) who sold for \$14,000 at our Roma bull sale in September 2024

CALF: FESTOON (P) (TC3 24V17E)
DOB: 14/10/2024 **SIRE:** TAYLOR GLENLEA FARGO (TC3 22T14E) (P)



Rejoined from 7/11/24 PTIC
to MAW GLENLEA TAURUS RED T940 (PP) R/F



**Taylor Glenlea
The Wind Maker (PP)
TC3 T8E**

**Sire of calf on Lot 1.
Joining Sire to lot 6 & 7.**

*Sold for \$14,000 at our
2024 Roma bull sale.*



**Taylor Glenlea
Fargo (PP)
TC3 T14E**

Sire of calves on lot 20 & 21.

*Sold for \$14,000 at our
2024 Roma bull sale.*

An Exceptional Opportunity

SCHARWYN FEMALES

We are proud to present a unique offering of one-brand females, featuring all retained R, S, and T drop females from the renowned Scharwyn herd. This calibre of young cows is rarely seen outside of a complete dispersal sale.

The Smith family has been long-time supporters of the Glenlea program, regularly purchasing top-quality females from our sales. Individuals and progeny from their Scharwyn herd, developed from these purchases, are now part of this exceptional sale.

This offering, which comes from the very heart of the Scharwyn herd, has been made available due to the challenges of drought and family illness. The entire Glenlea team extends our heartfelt condolences to the Smith family on the passing of their matriarch, Helen.

As part of our commitment to the best outcomes for the cattle, all females in this sale were relocated from South Australia to Glenlea's sub-tropical coastal base in far northern NSW in 2024. This move allowed them to adapt to a northern environment and receive all necessary vaccinations for the region, including tick fever (blooded).

PLEASE NOTE: THESE FEMALES HAVE BEEN RECOVERING FROM DROUGHT CONDITIONS AND ACCLIMATING TO A VERY DIFFERENT ENVIRONMENT. AS A RESULT, THEIR BODY CONDITION MAY NOT APPEAR AS HEAVY AS OTHER GROUPS IN THE SALE. THIS IS PURELY ENVIRONMENTAL. THEIR GENETICS ARE EXCEPTIONAL, AND THESE FEMALES ARE NOW FULLY PREPARED TO THRIVE IN ANY ENVIRONMENT AND DELIVER OUTSTANDING PERFORMANCE FROM DAY ONE.

The Scharwyn herd boasts a strong influence of Minnie Vale genetics, known across Australia for their adaptability, doability, and superior carcass traits. This sale represents a rare opportunity to secure such a significant concentration of Minnie Vale bloodlines. Whether you are starting a Charolais herd or building upon an existing program, these females are poised to produce sale-topping bulls consistently for their new owners.

**As always, every female in this sale is backed by the Glenlea guarantee:
If you have a problem with any animal, talk to us, and we will fix it.**



Minnie Vale Jona



Minnie Vale Mascot

LOT
22

SCHARWYN SAPPHIRE (P)

TATTOO: LAS S9E
DOB: 11/02/2021

PALGROVE JAGUAR J629E (PK J629E) (P)
SIRE: MINNIE-VALE MASCOT (SGS M97E) (P)
MINNIE-VALE UTOPIE H82E (SGS H82E)

MINNIE-VALE JONA (SGS J62E) (P)
DAM: SCHARWYN NICKEL (LAS N10E) (P)
SCHARWYN EBONY (LAS E8E)

December 2024 Australasian Charolais Single-Step BREEDPLAN

	CE Dir	GL	BW	200	400	600	Milk	SS	Carc Wt	EMA	Rump	IMF
EBV	+0.2	-0.4	+0.9	+12	+19	+28	+4	+0.8	+17	+1.6	-0.5	-0.1
Acc	35%	48%	56%	53%	50%	50%	37%	42%	39%	29%	33%	28%

COMMENTS: Beautifully balanced Mascot daughter, both in phenotype and EBV data to lead of the Scharwyn females. **DNA Tested Polled.** Rejoined to Quintus, an ideal combination.

Included is her weaned polled heifer by Liberty Shadow Boxer (PP) that makes this a very attractive package.

CALF: ULANI (P) (LAS 23U79E)
DOB: 27/11/2023
SIRE: LIBERTY SHADOW BOXER S12E (Y1K S12E) (P)



Rejoined to Glenlea Quintus (PP) from 20/10/24
Preg test details in supplementary sheet.

LOT
23

SCHARWYN SUNFLOWER (P)

TATTOO: LAS S10E
DOB: 14/02/2021

WATERFORD LIONHEART L34E (WET L34E) (P)
SIRE: ALLEDNAW PAYDAY (AKT P34E) (P)
ALLEDNAW OTHELIA G37 (AKT G37E) (P)

AMBERLEY ZACHARIAH (ACH Z4E) (P)
DAM: SCHARWYN FRANGIPANNI (LAS F2E) (P)
AMBERLEY DEIDRE (ACH D21E) (P)

December 2024 Australasian Charolais Single-Step BREEDPLAN

	CE Dir	GL	BW	200	400	600	Milk	SS	Carc Wt	EMA	Rump	IMF
EBV	+3.5	-1.5	-0.5	+5	+9	+6	-1	-0.1	+7	+0.7	+0.1	+0.1
Acc	34%	52%	54%	51%	47%	46%	38%	40%	37%	28%	32%	26%

COMMENTS: Big volumed, easy doing, early maturing female, lovely polled head, outcross genetics to Eastern states bloodlines on the dam's side.

Included is her polled Lt Countdown weaned heifer.

CALF: UNA (AI) (P) (LAS 23U71E)
DOB: 02/11/2023
SIRE: LT COUNTDOWN 9712 PLD (OAU Q8753E) (P)



Rejoined to Glenlea Quintus (PP) from 20/10/24
Preg test details in supplementary sheet.

LOT
24

SCHARWYN
SALLY

TATTOO: LAS S6E
DOB: 14/01/2021

WATERFORD LIONHEART L34E (WET L34E) (P)
SIRE: ALLEDNAW PAYDAY (AKT P34E) (P)
ALLEDNAW OTHELIA G37 (AKT G37E) (P)

BOONGATTI E49 (BOO E49E)
DAM: SCHARWYN HOLLY (LAS H44E)
SCHARWYN BERRY (LAS B1E)

December 2024 Australasian Charolais Single-Step BREEDPLAN												
	CE Dir	GL	BW	200	400	600	Milk	SS	Carc Wt	EMA	Rump	IMF
EBV	+0.2	-1.4	+0.5	+6	+11	+12	+0	+0.1	+8	+1.3	-0.4	+0.2
Acc	31%	51%	56%	49%	44%	44%	35%	38%	32%	26%	29%	25%

COMMENTS: Excellent type, very sound, a little more carcass and growth than her data may indicate.

Lovely polled heifer CAF. Had the opportunity to rejoin to Quintus from calving, the progeny of Quintus with these Scharwyn females will be outstanding. We retained her 2023 heifer.

CALF: SALLY 2ND (P) (LAS 23U69E)

DOB: 20/11/2023

SIRE: RANGAN TAMBO R37 (RAN R37E) (P)



PIC of Calf

See video for cow image.

Rejoined to Glenlea Quintus (PP) from 20/10/24

Preg test details in supplementary sheet.

LOT
25

SCHARWYN
JOYCE T3 (P)

TATTOO: LAS 22T3E
DOB: 13/01/2022

ELDER'S BLACKJACK 788B (OAC K788E) (P)
SIRE: SPINIFEX BLACKJACK (SPI Q1E) (P)
ALLEDNAW CAROL H8E (AKT H8E)

MINNIE-VALE JONA (SGS J62E) (P)
DAM: SCHARWYN JOYCE P29E (LAS P29E) (P)
CAITHNESS JOYCE 21 H50E (SBB H50E) (P)

December 2024 Australasian Charolais Single-Step BREEDPLAN												
	CE Dir	GL	BW	200	400	600	Milk	SS	Carc Wt	EMA	Rump	IMF
EBV	+0.1	-3.3	+0.1	+12	+24	+35	+8	+1.5	+23	+2.9	+0.1	-0.1
Acc	33%	50%	55%	52%	48%	49%	36%	44%	37%	31%	34%	30%

COMMENTS: Long bodied first calver, very docile, extra growth from her sire. Very correct and excellent data.

Her weaned polled bull calf GLE 24V824E has an amazing data set, across all EBVs.

DNA Tested PP POLLED

CALF: TAMBO V824 (P) (GLE 24V824E) **DOB:** 22/03/2024

SIRE: RANGAN TAMBO R37 (RAN R37E) (P)



Rejoined to Glenlea Quintus (PP) from 20/10/24

Preg test details in supplementary sheet.

LOT
26

SCHARWYN
SIMONE (P)

TATTOO: LAS S25E
DOB: 07/07/2021

PALGROVE JAGUAR J629E (PK J629E) (P)
SIRE: MINNIE-VALE MASCOT (SGS M97E) (P)
MINNIE-VALE UTOPIE H82E (SGS H82E)

MINNIE-VALE JONA (SGS J62E) (P)
DAM: SCHARWYN MISTY (LAS M33E) (P)
SCHARWYN HARRIET (LAS H23E) (P)

December 2024 Australasian Charolais Single-Step BREEDPLAN												
	CE Dir	GL	BW	200	400	600	Milk	SS	Carc Wt	EMA	Rump	IMF
EBV	+6.2	-2.3	-0.9	+10	+17	+24	+6	+0.8	+14	+1.2	+0.8	+0.2
Acc	36%	47%	57%	53%	50%	49%	38%	43%	39%	31%	34%	30%

COMMENTS: Balance across phenotype and data, this double polled Mascot daughter has a bomb proof temperament, slick skin type and extra yield in her carcass.

Her weaned polled heifer by "Tambo" is a great bodied heifer, low BW, good growth and above average carcass data.

CALF: SIMONE 2ND (P) (GLE 24V817E)
DOB: 05/03/2024
SIRE: RANGAN TAMBO R37 (RAN R37E) (P)



Rejoined to Glenlea Quintus (PP) from 20/10/24
Preg test details in supplementary sheet.

LOT
27

SCHARWYN
FLARE S42 (AI) (P)

TATTOO: LAS S42E
DOB: 28/09/2021

VALLEY VIEW JAGER (VLW J2E) (P)
SIRE: VALLEY VIEW LEADER (VLW L22E) (P)
VALLEY VIEW CHIFFON SILVER (VLW J6E) (P)

VALLEY VIEW GLENLEA JUST'NEASY (VLW J23E) (P)
DAM: GLENLEA FLARE 1ST (GLE M73E) (P)
MULLUM FLARE 10 (BLA K375E) (P)

COMMENTS: Outcross bloodlines, good frame and slick hair, curve bending performance in this double polled female.

Glenlea dam, going back to a Palgrove cow family. Low BW, good growth and breed leading carcass data. Her sire V.V. Leader is an early maturing bull, low BW with above average growth and some of the best carcass data in the breed, top 1% EMA, Top 5% IMF and top 15% fat cover and beef yield%. Her weaned polled heifer calf is a keeper heifer for sure.

December 2024 Australasian Charolais Single-Step BREEDPLAN												
	CE Dir	GL	BW	200	400	600	Milk	SS	Carc Wt	EMA	Rump	IMF
EBV	+7.8	-3.1	-1.7	+9	+21	+29	+9	+1.5	+23	+3.2	+2.3	+0.9
Acc	36%	71%	68%	54%	50%	51%	38%	49%	40%	35%	41%	34%



Rejoined to Glenlea Quintus (PP) from 20/10/24
Preg test details in supplementary sheet.

CALF: FLARE 16TH (P) (GLE 24V822E) **DOB:** 09/03/2024 **SIRE:** RANGAN TAMBO R37 (RAN R37E) (P)

LOT
28

SCHARWYN
BRONWIN R10E (P)

TATTOO: LAS R10E
DOB: 04/06/2020

PALGROVE JAGUAR J629E (PK J629E) (P)
SIRE: MINNIE-VALE MASCOT (SGS M97E) (P)
MINNIE-VALE UTOPIE H82E (SGS H82E)

RANGAN PARK GAUGUIN C15 (RAN C15E) (P)
DAM: SCHARWYN BRONWIN (LAS F3E) (P)
RANGAN PARK BRONWIN D52 (RAN D52E) (P)

December 2024 Australasian Charolais Single-Step BREEDPLAN

	CE Dir	GL	BW	200	400	600	Milk	SS	Carc Wt	EMA	Rump	IMF
EBV	-2.3	-0.2	+1.0	+14	+23	+32	+5	+0.7	+18	+1.1	-0.3	+0.2
Acc	43%	55%	64%	56%	54%	52%	42%	46%	43%	34%	39%	34%

COMMENTS: Mascot daughter in her prime, long bodied, balanced data. Dam is full of Palgrove genetics from a nationally recognised cow family.

Her weaned bull calf by "Tambo" is docile and early maturing. Sure to be an easy bull to sell when grown out or may be suitable as a stud heifer bull with his data set.

CALF: TAMBO V801 (P) (GLE 24V801E)
DOB: 06/01/2024 **SIRE:** RANGAN TAMBO R37 (RAN R37E) (P)



Rejoined to Glenlea Quintus (PP) from 20/10/24
Preg test details in supplementary sheet.

LOT
29

SPINIFEX
GRACE ROSE (P)

TATTOO: SPI R1E
DOB: 05/01/2020

LT VENTURE 3198 (OAU J5612E) (P)
SIRE: CHALLAMBI MUSCLES (CHA M15E) (P)
ROSDALE HIGHNESS G114E (MR G114E) (P)

LITTLE VALLEY GRANDIOSE (GKB G5E) (P)
DAM: ORARA WATERFALL GRACE 9TH (WFA N57E) (P)
JACKSON GRACE (MEJ G26E) (P)

December 2024 Australasian Charolais Single-Step BREEDPLAN

	CE Dir	GL	BW	200	400	600	Milk	SS	Carc Wt	EMA	Rump	IMF
EBV	+0.4	-3.1	-1.5	+13	+25	+37	+13	+1.0	+24	+1.5	+1.3	+0.2
Acc	41%	56%	63%	57%	54%	55%	43%	53%	44%	40%	45%	39%

COMMENTS: Classy double polled female, bomb proof temperament, perfect udder, length and very correct, curve bending data set. Out of a female purchased from our 2019 sale, sired by the great breeding bull "Muscles".

CAF thick early maturing double polled bull, with curve bending data set, may have potential as stud heifer bull.

CALF: TAMBO V101 (P) (GLE 24V101E)
DOB: 15/08/2024
SIRE: RANGAN TAMBO R37 (RAN R37E) (P)



Rejoined to Glenlea Quintus (PP) from 20/10/24
Preg test details in supplementary sheet.

LOT
30

SCHARWYN
REBECCA (P)

TATTOO: LAS R8E
DOB: 30/05/2020

PALGROVE JAGUAR J629E (PK J629E) (P)
SIRE: MINNIE-VALE MASCOT (SGS M97E) (P)
MINNIE-VALE UTOPIE H82E (SGS H82E)

RANGAN PARK PINAY F21 (RAN F21E) (P)
DAM: SCHARWYN JANET (LAS J9E)
ASHWOOD PARK FLUTE (HAS F150E) (P)

December 2024 Australasian Charolais Single-Step BREEDPLAN

	CE Dir	GL	BW	200	400	600	Milk	SS	Carc Wt	EMA	Rump	IMF
EBV	+3.9	-2.8	+0.0	+11	+18	+25	+4	+0.5	+18	+1.4	-0.4	+0.0
Acc	38%	54%	59%	56%	53%	51%	42%	48%	41%	35%	40%	34%

COMMENTS: Big volumed Mascot daughter, little more carcass and bone, excellent balanced data. Great temperament. An excellent young cow in her prime.

CAF thick bodied, easy finishing double polled bull calf.

CALF: TAMBO V102 (P) (GLE 24V102E) **DOB:** 20/08/2024 **SIRE:** RANGAN TAMBO R37 (RAN R37E) (P)



Rejoined to Glenlea Quintus (PP) from 20/10/24
Preg test details in supplementary sheet.

LOT
31

GLENLEA
GLITZ 4TH (AI) (P) (R/F)

TATTOO: GLE R13E
DOB: 10/02/2020

RANGAN PARK REDEMPTION E42 (RAN E42E) (P)
SIRE: GLENLEA JUST RED (GLE J5E) (P)
GLENLEA JANET U6E R/F (GLE U6E) (P)

RANGAN PARK RIO BRAVO D15 (RAN D15E) (P)
DAM: ORARA WATERFALL GLENLEA GLITZ 2ND (WFA K30E) (P)
JACKSON GLITZ (MEJ G9E) (P)

December 2024 Australasian Charolais Single-Step BREEDPLAN

	CE Dir	GL	BW	200	400	600	Milk	SS	Carc Wt	EMA	Rump	IMF
EBV	-6.1	-3.7	+1.3	+17	+35	+46	+6	+0.6	+26	+2.2	+1.1	+0.8
Acc	48%	69%	69%	60%	56%	57%	46%	56%	46%	42%	47%	41%

COMMENTS: A daughter of "Just Red" in her prime. moderate framed with plenty of performance, well above average data across all growth and carcass traits. Purchased as a heifer from our 2021 female sale.

CAF very nicely shaped double polled heifer.

CALF: GLITZ 7TH (P) (GLE 24V107E)
DOB: 09/09/2024
SIRE: RANGAN TAMBO R37 (RAN R37E) (P)



Rejoined to Glenlea Quintus (PP) from 20/10/24
Preg test details in supplementary sheet.

LOT
32

SCHARWYN
FLARE R15E (P)

TATTOO: LAS R15E
DOB: 15/06/2020

PALGROVE JAGUAR J629E (PK J629E) (P)
SIRE: MINNIE-VALE MASCOT (SGS M97E) (P)
MINNIE-VALE UTOPIE H82E (SGS H82E)

VALLEY VIEW GLENLEA JUST'NEASY (VLW J23E) (P)
DAM: GLENLEA FLARE 1ST (GLE M73E) (P)
MULLUM FLARE 10 (BLA K375E) (P)



December 2024 Australasian Charolais Single-Step BREEDPLAN

	CE Dir	GL	BW	200	400	600	Milk	SS	Carc Wt	EMA	Rump	IMF
EBV	+3.3	-2.0	-0.1	+12	+23	+32	+6	+1.1	+20	+1.4	+1.5	+0.7
Acc	38%	51%	62%	54%	51%	50%	39%	46%	39%	33%	37%	32%

COMMENTS: Lovely gentle natured, double polled, balanced frame, carcass and finish, from the well-known "Flare cow" family originating at Palgrove and by Mascot who has sired an amazing group of females in this sale. Weaned heifer calf has done very well since being weaned very young, good doing double polled heifer that will end up in any stud's replacement heifer mob.

CALF: FLARE 15TH (P) (GLE 24V812E)

DOB: 15/06/2024

SIRE: RANGAN TAMBO R37 (RAN R37E) (P)



Rejoined to Glenlea Quintus (PP) from 20/10/24
Preg test details in supplementary sheet.

LOT
33

SCHARWYN
ROSEBUD (P)

TATTOO: LAS R1E
DOB: 04/01/2020

PALGROVE JAGUAR J629E (PK J629E) (P)
SIRE: MINNIE-VALE MASCOT (SGS M97E) (P)
MINNIE-VALE UTOPIE H82E (SGS H82E)

AMBERLEY ZACHARIAH (ACH Z4E) (P)
DAM: SCHARWYN FRANGIPANNI (LAS F2E) (P)
AMBERLEY DEIDRE (ACH D21E) (P)



December 2024 Australasian Charolais Single-Step BREEDPLAN

	CE Dir	GL	BW	200	400	600	Milk	SS	Carc Wt	EMA	Rump	IMF
EBV	+1.8	-1.0	+0.0	+11	+18	+23	-1	+0.4	+14	-0.1	+0.1	+0.0
Acc	39%	47%	55%	53%	50%	49%	40%	41%	40%	29%	34%	28%

COMMENTS: Another well balanced Mascot daughter, exhibiting extra body length and finish.

Weaned double polled heifer shows all the potential to be a great stud female, and **DNA Tested Polled**

CALF: ROSEBUD 1ST (P) (GLE 24V36E)

DOB: 29/04/2024

SIRE: RANGAN TAMBO R37 (RAN R37E) (P)



Rejoined to Glenlea Quintus (PP) from 20/10/24
Preg test details in supplementary sheet.

LOT
34

SCHARWYN
ROSLYN (P)

TATTOO: LAS R4E
DOB: 08/02/2020

LT VENTURE 3198 (OAU J5612E) (P)

LITTLE VALLEY GRANDIOSE (GKB G5E) (P)

SIRE: CHALLAMBI MUSCLES (CHA M15E) (P)

DAM: ORARA WATERFALL GLENLEA ROSLYN 1ST (WFA N53E) (P)

ROSEDALE HIGHNESS G114E (MR G114E) (P)

PIPECLAY E2E (ROL E2E)



December 2024 Australasian Charolais Single-Step BREEDPLAN

	CE Dir	GL	BW	200	400	600	Milk	SS	Carc Wt	EMA	Rump	IMF
EBV	-9.1	-2.8	+0.1	+15	+30	+43	+11	+0.8	+27	+2.1	+0.9	+0.3
Acc	41%	55%	62%	58%	55%	55%	44%	55%	45%	41%	47%	41%

COMMENTS: Big strong young cow, double polled, high-performance data, across all traits, perfect udder and great temperament. R4 was calf in utero of her dam when purchased from our 2019 sale.



CAF outstanding double polled heifer calf, show prospect!

CALF: ROSLYN 6TH (P) (GLE 24V135E)

DOB: 14/11/2024

SIRE: RANGAN TAMBO R37 (RAN R37E) (P)

Rejoined to Glenlea Quintus (PP) from 20/11/24.

Preg test details in supplementary sheet.

LOT
35

SCHARWYN
ROXY

TATTOO: LAS R31E
DOB: 13/10/2020

PALGROVE JAGUAR J629E (PK J629E) (P)

BOONGATTI E49 (BOO E49E)

SIRE: MINNIE-VALE MASCOT (SGS M97E) (P)

DAM: SCHARWYN LACIE (LAS L26E) (P)

MINNIE-VALE UTOPIE H82E (SGS H82E)

SCHARWYN FRANGIPANNI (LAS F2E) (P)



December 2024 Australasian Charolais Single-Step BREEDPLAN

	CE Dir	GL	BW	200	400	600	Milk	SS	Carc Wt	EMA	Rump	IMF
EBV	-0.9	-0.2	+0.7	+11	+19	+27	-1	+0.5	+15	+0.2	-0.3	+0.0
Acc	34%	44%	52%	50%	47%	45%	36%	39%	36%	27%	31%	26%

COMMENTS: A little extra frame and length in this female, really doing a great job on her polled heifer calf.



CAF very stylish and thick bodied polled heifer calf by Silverstream Manhattan (PP).

CALF: ROXY 2ND (AI) (P) (GLE 24V134E)

DOB: 13/11/2024

SIRE: SILVERSTREAM MANHATTAN M171 (OAN M171E) (P)

Rejoined to Glenlea Quintus (PP) from 20/10/24.

Preg test details in supplementary sheet.



Lot 32 Weaned Calf
GLE 24V812E



Lot 33 Weaned Calf
GLE V36E



Lot 53 Weaned Calf
GLE 24V807E



Lot 34 Calf at Foot
GLE 24V135E



Lot 36 Calf at Foot
GLE 24V145E

LOT
36

SCHARWYN
ROCHELLE (P)

TATTOO: LAS R37E
DOB: 29/10/2020

PALGROVE JAGUAR J629E (PK J629E) (P)
SIRE: MINNIE-VALE MASCOT (SGS M97E) (P)
MINNIE-VALE UTOPIE H82E (SGS H82E)

MINNIE-VALE JONA (SGS J62E) (P)
DAM: SCHARWYN PRANCER (LAS P10E)
SCHARWYN KERRY (LAS K44E)



December 2024 Australasian Charolais Single-Step BREEDPLAN

	CE Dir	GL	BW	200	400	600	Milk	SS	Carc Wt	EMA	Rump	IMF
EBV	+2.0	-1.0	+0.5	+10	+17	+25	+2	+0.8	+15	+1.1	-0.3	+0.0
Acc	36%	46%	64%	53%	49%	49%	37%	42%	38%	29%	32%	28%

COMMENTS: A Mascot X M.V. Jona female, perfect udder, great temperament and so balanced and correct in every way. Doing a great job on her double polled bull calf.

CAF thick early maturing low BW, double polled bull calf.

CALF: BOXER V145 (P) (GLE 24V145E)
DOB: 24/11/2024 **SIRE:** LIBERTY SHADOW BOXER S12E (Y1K S12E) (P)



Rejoined to Glenlea Quintus (PP) from 20/11/24.
Preg test details in supplementary sheet.

LOT
37

SCHARWYN
RAPUNZEL (P)

TATTOO: LAS R36E
DOB: 27/10/2020

PALGROVE JAGUAR J629E (PK J629E) (P)
SIRE: MINNIE-VALE MASCOT (SGS M97E) (P)
MINNIE-VALE UTOPIE H82E (SGS H82E)

MINNIE-VALE JONA (SGS J62E) (P)
DAM: SCHARWYN NATALIE (LAS N72E) (P)
ASHWOOD PARK FLIRTY (HAS F79E) (P)



December 2024 Australasian Charolais Single-Step BREEDPLAN

	CE Dir	GL	BW	200	400	600	Milk	SS	Carc Wt	EMA	Rump	IMF
EBV	+2.3	-1.9	+0.0	+11	+19	+25	+4	+0.9	+15	+0.9	+0.1	+0.0
Acc	39%	49%	64%	53%	50%	49%	38%	42%	38%	30%	33%	29%

COMMENTS: A second Mascot X Minnie Vale Jona female, very similar to previous lot. Double polled, very docile and very balanced data.

Weaned heifer calf is a lovely heifer that has the body and shape to keep her in your herd.

CALF: RAPUNZEL 2ND (P) (GLE 24V814E) **DOB:** 24/02/2024 **SIRE:** RANGAN TAMBO R37 (RAN R37E) (P)



Rejoined to Glenlea Quintus (PP) from 20/10/24.
Preg test details in supplementary sheet.

LOT
38

SCHARWYN
FLARE P26 (AI) (P)

TATTOO: LAS P26E
DOB: 18/08/2018

LT STAGECOACH 8068 PLD (OAU D7606E) (P)
SIRE: LT VENTURE 3198 (OAU J5612E) (P)
LT BALLET 9219 (OAU E7686E) (P)

VALLEY VIEW GLENLEA JUST'NEASY (VLW J23E) (P)
DAM: GLENLEA FLARE 1ST (GLE M73E) (P)
MULLUM FLARE 10 (BLA K375E) (P)

COMMENTS: A rare gem, daughter of LT Venture (PP) not very often Venture females come on the market. Flare was a show heifer in her day. Long bodied and very docile. Standout data, low BW and above breed 400- and 600-day growth and EMA with top 1% fat cover and Top 5% IMF. Weaned double polled heifer calf is one of the pick Tambo heifers in the sale. Don't be concerned about her body condition, she has adapted to the northern environment and is recovering from drought conditions more every day.

CALF: FLARE 12TH (P) (GLE 24V820E) **DOB:** 07/03/2024 **SIRE:** RANGAN TAMBO R37 (RAN R37E) (P)



December 2024 Australasian Charolais Single-Step BREEDPLAN

	CE Dir	GL	BW	200	400	600	Milk	SS	Carc Wt	EMA	Rump	IMF
EBV	+6.7	-3.4	-2.9	+10	+29	+37	+17	+2.0	+28	+1.7	+4.1	+0.9
Acc	52%	69%	68%	65%	63%	63%	56%	62%	53%	49%	56%	49%



Rejoined to Glenlea Quintus (PP) from 20/10/24.
Preg test details in supplementary sheet.

LOT
39

SCHARWYN
FLARE Q1E

TATTOO: LAS Q1E
DOB: 19/01/2019

MINNIE-VALE JONA (SGS J62E) (P)
SIRE: SCHARWYN MOROCCO (LAS M18E) (P)
RANGAN PARK SHOWGIRL E14 (RAN E14E) (P)

PALGROVE EMBLEM (PK E754E)
DAM: MULLUM FLARE 10 (BLA K375E) (P)
PALGROVE FLARE 72 (PK Z375E) (P)



December 2024 Australasian Charolais Single-Step BREEDPLAN

	CE Dir	GL	BW	200	400	600	Milk	SS	Carc Wt	EMA	Rump	IMF
EBV	+5.6	-3.6	-1.7	+1	+5	+2	+7	+0.7	+7	+2.1	+1.4	+0.4
Acc	37%	47%	58%	51%	48%	51%	37%	42%	39%	32%	39%	32%

COMMENTS: Long bodied, M.V. Jona granddaughter. Low BW data with well above average carcass data.

Weaned polled heifer calf is easy doing with extra finishing ability.

CALF: FLARE 14TH (P) (GLE 24V810E) **DOB:** 10/02/2024 **SIRE:** RANGAN TAMBO R37 (RAN R37E) (P)



Rejoined to Glenlea Quintus (PP) from 20/10/24.
Preg test details in supplementary sheet.

LOT
40

SCHARWYN
PENNY (AI) (P)

TATTOO: LAS P56E
DOB: 26/12/2018

LT STAGECOACH 8068 PLD (OAU D7606E) (P)

MINNIE-VALE JONA (SGS J62E) (P)

SIRE: LT VENTURE 3198 (OAU J5612E) (P)

DAM: SCHARWYN MISTY (LAS M33E) (P)

LT BALLET 9219 (OAU E7686E) (P)

SCHARWYN HARRIET (LAS H23E) (P)

COMMENTS: Impressive LT

Venture daughter. Little extra scale and length, double polled, bomb proof temperament, out of great M.V. Jona dam.

Curve bending data across the board with top 1% fat cover. These types of females joined to powerful performance bulls like "Quintus" produce those thick soft easy doing polled Charolais bulls that are easy to sell everywhere. Weaned bull calf an impressive bull and has real potential as a stud heifer bull / lead sale bull. Curve bending data, good bone, wide top and extra finish with fat cover data in top 1% of the breed.

CALF: TAMBO V809 (P) (GLE 24V809E)

DOB: 10/02/2024 SIRE: RANGAN TAMBO R37 (RAN R37E) (P)



December 2024 Australasian Charolais Single-Step BREEDPLAN

	CE Dir	GL	BW	200	400	600	Milk	SS	Carc Wt	EMA	Rump	IMF
EBV	+9.5	-3.4	-3.7	+8	+23	+28	+16	+1.6	+23	+1.5	+3.4	+0.4
Acc	51%	67%	67%	65%	62%	62%	55%	59%	53%	47%	53%	47%



Rejoined to Glenlea Quintus (PP) from 20/10/24.
Preg test details in supplementary sheet.

LOT
41

GLENLEA
ELLEN 6TH (P)

TATTOO: GLE Q331E
DOB: 11/09/2019

BRANCH VIEW HOWLER (BVC H118E) (P)

ROSEDALE AXLE (MR A104E) (P)

SIRE: PARINGA HOWLER M344 (TOL M344E) (P)

DAM: JACKSON ELLEN (MEJ E24E) (P)

PARINGA REDEMPTION G437 (TOL G437E) (P)

VEEJAY DOWNS NOUGAT X24E (VJ X24E) (P)



December 2024 Australasian Charolais Single-Step BREEDPLAN

	CE Dir	GL	BW	200	400	600	Milk	SS	Carc Wt	EMA	Rump	IMF
EBV	+4.4	-2.5	-0.6	+9	+19	+21	+1	+1.0	+13	+1.3	+2.1	+0.7
Acc	38%	45%	59%	53%	58%	55%	37%	50%	49%	42%	55%	43%

COMMENTS: Long bodied, good frame, fine hair type, easy doing female in her prime. Purchased as a heifer from our 2021 sale. Low BW and top 10% of breed for fat cover.

DNA tested PP Polled.

Weaned bull CAF, good framed, low BW bull very easy finishing that will make a sale bull later this year. He has been DNA tested PP Polled.

CALF: UPPERCLASS (P) (LAS 23U78E) DOB: 18/11/2023

SIRE: LIBERTY SHADOW BOXER S12E (Y1K S12E) (P)



Rejoined to Glenlea Quintus (PP) from 20/10/24.
Preg test details in supplementary sheet.

LOT
42

ORARA WATERFALL GLENLEA
BOP BOP 2ND (P)

TATTOO: WFA P52E
DOB: 11/09/2018

GALLWAY - RS (OAF G1063F) (P)
SIRE: **CHARNELLE LOUIS (GKA L73E) (P)**
CHARNELLE ELLE (GKA E10E) (P)

CB CANTERBURY (CBL C13E) (P)
DAM: **PIPECLAY G2E (ROL G2E)**
PIPECLAY BOP BOP (ROL B2E)

December 2024 Australasian Charolais Single-Step BREEDPLAN

	CE Dir	GL	BW	200	400	600	Milk	SS	Carc Wt	EMA	Rump	IMF
EBV	-9.9	-2.3	+2.0	+9	+18	+21	+5	+0.3	+12	+2.4	+0.4	+0.2
Acc	43%	58%	66%	58%	56%	55%	44%	55%	45%	39%	44%	37%

COMMENTS: Lovley big deep bodied cow, bomb proof temperament, excellent carcass data, positive for all traits. The second of only two "Louis" daughters in the sale. Dam goes back to the Estella cow family at Palgrove. This female was purchased as a calf at foot on her dam from our 2019 sale. **DNA Tested Polled**

CAF is an outstanding polled heifer, show prospect!

CALF: BOP BOP 8TH (P) (GLE 24V159E) **DOB:** 27/12/2024 **SIRE:** RANGAN TAMBO R37 (RAN R37E) (P)



Joined to Glenlea Quintus (PP) since calving
Preg test details in supplementary sheet.



LOT
43

ORARA WATERFALL
GLENLEA ROSLYN 1ST (P)

TATTOO: WFA N53E
DOB: 21/09/2017

EC NO DOUBT 2022 P M685500 (OAU Z2022E) (P)
SIRE: **LITTLE VALLEY GRANDIOSE (GKB G5E) (P)**
LITTLE VALLEY DOLLY (GKB D5E) (P)

PINAY 8552394134 (OAF U4134F)
DAM: **PIPECLAY E2E (ROL E2E)**
COBRABALD OFFSHORE X85 (ASH X85E)

December 2024 Australasian Charolais Single-Step BREEDPLAN

	CE Dir	GL	BW	200	400	600	Milk	SS	Carc Wt	EMA	Rump	IMF
EBV	-16.1	-2.3	+2.6	+16	+28	+46	+8	+0.1	+25	+2.4	-0.6	+0.6
Acc	49%	58%	70%	58%	56%	56%	49%	54%	47%	42%	47%	42%

COMMENTS: Big strong polled cow, lots of volume, perfect udder, purchased as a joined heifer from our 2019 sale. Has a daughter in this sale at lot 34. Dam has French bloodlines of "Pinay" and "Offshore" going back to Rosedale Roslyn U78, a donor cow who had 44 progeny.

CAF performance polled heifer, showing excellent carcass that has a big future.

CALF: ROSLYN 7TH (P) (GLE 24V136E)
DOB: 19/11/2024
SIRE: RANGAN TAMBO R37 (RAN R37E) (P)



PIC of Calf

See video for cow image.

Joined to Glenlea Quintus (PP) since calving
Preg test details in supplementary sheet.

LOT
44

SCHARWYN
SHOWGIRL Q15E (P)

TATTOO: LAS Q15E
DOB: 21/12/2019

PALGROVE JAGUAR J629E (PK J629E) (P)

BOONGATTI E49 (BOO E49E)

SIRE: MINNIE-VALE MASCOT (SGS M97E) (P)

DAM: SCHARWYN SHOWGIRL H27E (LAS H27E) (P)

MINNIE-VALE UTOPIE H82E (SGS H82E)

RANGAN PARK SHOWGIRL E14 (RAN E14E) (P)

December 2024 Australasian Charolais Single-Step BREEDPLAN

	CE Dir	GL	BW	200	400	600	Milk	SS	Carc Wt
EBV	+2.5	-0.6	+0.2	+10	+16	+24	+1	+0.7	+15
Acc	38%	47%	59%	52%	49%	49%	38%	41%	37%

	EMA	Rump	IMF
EBV	+0.7	-0.5	-0.1
Acc	30%	34%	29%

COMMENTS: Mascot daughter, balanced, docile. Dam is from the "Showgirl" cow family who is the cornerstone cow family of the Rangan Park herd in Victoria. Calved at 2 years and has 3 progeny, we have retained her 2024 calf.



Rejoined to Glenlea Quintus (PP) from 20/10/24.
Preg test details in supplementary sheet.

LOT
45

WITHDRAWN

SCHARWYN
NANCY

TATTOO: LAS N36E
DOB: 26/08/2017

LOT
46

SCHARWYN
GINGER (P)

TATTOO: LAS S56E
DOB: 05/11/2021

PALGROVE JAGUAR J629E (PK J629E) (P)

GLENLEA BIG GUN (GLE B10E) (P)

SIRE: MINNIE-VALE MASCOT (SGS M97E) (P)

DAM: JACKSON GINGER (MEJ G12E) (P)

MINNIE-VALE UTOPIE H82E (SGS H82E)

JACKSON BLISS (MEJ B81E) (P)

December 2024 Australasian Charolais Single-Step BREEDPLAN

	CE Dir	GL	BW	200	400	600	Milk	SS	Carc Wt	EMA	Rump	IMF
EBV	-5.8	-0.8	+1.4	+15	+26	+39	+3	+0.9	+22	+0.7	-0.8	+0.0
Acc	39%	49%	60%	55%	52%	53%	40%	46%	41%	34%	40%	32%

COMMENTS: Outstanding first calver, powerful Mascot daughter, extra growth and carcass. Dam is a powerful "Big Gun" daughter from a high-performance Jackson bred cow.

CAF bull calf LT Countdown (PP) low BW with carcass, has potential as a stud heifer bull.

CALF: COUNTDOWN V106 (AI) (P) (GLE 24V106E) **DOB:** 10/10/2024

SIRE: LT COUNTDOWN 9712 PLD (OAU Q8753E) (P)



Rejoined to Waterford Red Rascal (PP) R/F from 20/10/24
Preg test details in supplementary sheet.

LOT
47

SCHARWYN
DIGNA S40 (AI) (P)

TATTOO: LAS S40E
DOB: 28/09/2021

SILVERSTREAM GEDDES G102 (OAN G102D) (P) PALGROVE EMBLEM (PK E754E)
SIRE: SILVERSTREAM MANHATTAN M171 (OAN M171E) (P) DAM: GLENLEA DIGNA 1ST (GLE L116E)
SILVERSTREAM WENDY G98 (PED G98E) (P) MULLUM DIGNA 4 (BLA H27E)



December 2024 Australasian Charolais Single-Step BREEDPLAN

	CE Dir	GL	BW	200	400	600	Milk	SS	Carc Wt	EMA	Rump	IMF
EBV	-4.6	-0.2	+1.3	+7	+16	+18	+4	+0.5	+11	+2.3	+1.1	+0.3
Acc	51%	74%	72%	64%	62%	62%	53%	60%	52%	46%	53%	46%

COMMENTS: Length of body, extra carcass and bone in this powerful Silverstream Manhattan first calver, very docile. Dam Glenlea Digna, is part of the nationally recognised cow family originating from Palgrove.

CAF is a very eye appealing, long bodied show prospect heifer.

CALF: DIGNA 12TH (AI) (P)
(GLE 24V109E)
DOB: 20/09/2024
SIRE: LT COUNTDOWN 9712
PLD (OAU Q8753E) (P)



Rejoined to Waterford Red Rascal (PP) R/F from 20/10/24
Preg test details in supplementary sheet.

LOT
48

SCHARWYN
STELLA (TW)

TATTOO: LAS S51E
DOB: 21/10/2021

ELDER'S BLACKJACK 788B (OAC K788E) (P) MINNIE-VALE JONA (SGS J62E) (P)
SIRE: SPINIFEX BLACKJACK (SPI Q1E) (P) DAM: SCHARWYN NANCY (LAS N36E)
ALLEDNAW CAROL H8E (AKT H8E) SCHARWYN HARMONY (LAS H18E) (P)



December 2024 Australasian Charolais Single-Step BREEDPLAN

	CE Dir	GL	BW	200	400	600	Milk	SS	Carc Wt	EMA	Rump	IMF
EBV	-4.3	-2.6	+1.1	+12	+23	+34	+6	+1.6	+21	+2.9	+0.7	-0.1
Acc	36%	54%	61%	53%	49%	49%	37%	45%	38%	32%	36%	31%

COMMENTS: Outstanding unit, sired by the high-performance Elders Blackjacket (PP) son "Spinifex Blackjacket (P)" whose dam was from the outstanding Glenlea Carol cow family. Dam is an outstanding Minnie Vale Jona daughter. S51 has performance, carcass and udder, long bodied and fine hair type. EBVs are very balanced with leading carcass data. CAF is another standout LT Countdown heifer.

CALF: STELLA 2ND (AI) (P) (GLE 24V111E)
DOB: 24/09/2024
SIRE: LT COUNTDOWN 9712 PLD (OAU Q8753E) (P)



Rejoined to Waterford Red Rascal (PP) R/F from 20/10/24. Preg test details in supplementary sheet.

LOT
49

SCHARWYN
STORMI

TATTOO: LAS S55E
DOB: 31/10/2021

ELDER'S BLACKJACK 788B (OAC K788E) (P)
SIRE: SPINIFEX BLACKJACK (SPI Q1E) (P)
ALLEDNAW CAROL H8E (AKT H8E)

RANGAN PARK PINAY F21 (RAN F21E) (P)
DAM: SCHARWYN JANET (LAS J9E)
ASHWOOD PARK FLUTE (HAS F150E) (P)

December 2024 Australasian Charolais Single-Step BREEDPLAN												
	CE Dir	GL	BW	200	400	600	Milk	SS	Carc Wt	EMA	Rump	IMF
EBV	+2.6	-4.7	-0.8	+8	+18	+26	+8	+1.1	+21	+2.8	+0.1	-0.3
Acc	39%	56%	61%	55%	51%	51%	41%	48%	40%	35%	40%	35%

COMMENTS: Great bodied female, length, carcass and gentle nature. Another "Spinifex Blackjack" who Glenlea purchased in 2021 as a rising 3-year-old. Dam was by the widely used A.I. sire Pinay F21 who has 266 registered progeny with top 1% of breed for EMA and beef yield %.

Her 2024 calf was born unassisted but unfortunately lost to scours a couple of weeks later.



Rejoined to Waterford Red Rascal (PP) R/F from 20/10/24
Preg test details in supplementary sheet.

LOT
50

SCHARWYN
TITANIUM (AI) (P)

TATTOO: LAS 22T7E
DOB: 07/02/2022

LT LONGNECK 3031 PLD (PED J5582E) (P)
SIRE: LT DEL REY 6161 (OAU M361E) (P)
LT MAXINE 7908 (PED C2861E) (P)

SCHARWYN MADAGASCAR (LAS M56E) (P)
DAM: SCHARWYN QUARTZ (LAS Q5E) (P)
SCHARWYN KLARET (LAS K42E)

December 2024 Australasian Charolais Single-Step BREEDPLAN												
	CE Dir	GL	BW	200	400	600	Milk	SS	Carc Wt	EMA	Rump	IMF
EBV	+6.6	-0.8	-1.3	+10	+22	+24	+10	+0.2	+17	+2.1	+2.7	+0.9
Acc	37%	58%	63%	58%	55%	54%	34%	52%	42%	36%	43%	35%

COMMENTS: Young first calver doing a great job on her calf. Long bodied, good frame, extra finish and high IMF%. Outcross sire, we believe the first LT DEL REY (PP) female offered for sale in Australia, her dam is a granddaughter of M.V. Jona. Low BW EBVs, Outstanding unit.

CAF polled heifer is as neat as they come, super soft, with eye appeal and excellent data.



Rejoined to Waterford Red Rascal (PP) R/F from 20/10/24
Preg test details in supplementary sheet.

CALF: TITANIUM 2ND (AI) (P) (GLE 24V110E)
DOB: 22/09/2024
SIRE: LT LEDGER 9603 PLD (P) (OAU Q8664E)

LOT
51

SCHARWYN QUARTZ (P)

TATTOO: LAS Q5E
DOB: 04/10/2019

MINNIE-VALE JONA (SGS J62E) (P)
SIRE: SCHARWYN MADAGASCAR (LAS M56E) (P)
SCHARWYN FRANCENE (LAS F5F)

BOONGATTI E49 (BOO E49E)
DAM: SCHARWYN KLARET (LAS K42E)
SCHARWYN EBONY (LAS E8E)



December 2024 Australasian Charolais Single-Step BREEDPLAN

	CE Dir	GL	BW	200	400	600	Milk	SS	Carc Wt	EMA	Rump	IMF
EBV	-4.3	-0.2	+1.8	+11	+18	+26	+1	+0.4	+16			
Acc	32%	43%	53%	44%	41%	42%	29%	32%	31%			

COMMENTS: Big strong cow, heavy French influence in both sire and dam, M.V. Jona Granddaughter. Above average carcass traits, good bone, excellent udder. Dam of lot 50, a great pair of cows to put together and start a new cow family in your herd.

CAF big strong double polled bull calf, ready to wean.

CALF: TAMBO V848 (P) (GLE 24V848E) **DOB:** 10/07/2024
SIRE: RANGAN TAMBO R37 (RAN R37E) (P)



Rejoined to Waterford Red Rascal (PP) R/F from 20/10/24.
Preg test details in supplementary sheet.

LOT
52

SCHARWYN SHOWGIRL R32E (P)

TATTOO: LAS R32E
DOB: 16/10/2020

PALGROVE JAGUAR J629E (PK J629E) (P)
SIRE: MINNIE-VALE MASCOT (SGS M97E) (P)
MINNIE-VALE UTOPIE H82E (SGS H82E)

MINNIE-VALE JONA (SGS J62E) (P)
DAM: SCHARWYN SHOWGIRL N59 (LAS N59E) (P)
SCHARWYN SHOWGIRL K19E (LAS K19E) (P)



December 2024 Australasian Charolais Single-Step BREEDPLAN

	CE Dir	GL	BW	200	400	600	Milk	SS	Carc Wt	EMA	Rump	IMF
EBV	+3.9	-1.7	-0.1	+10	+17	+24	+3	+0.8	+17	+1.4	-0.4	-0.1
Acc	36%	50%	56%	53%	49%	49%	37%	42%	38%	29%	33%	28%

COMMENTS: Another classy, very balanced Mascot daughter, length, great udder, very docile. Dam is from the Showgirl cow family mentioned previous at lot 44.

CAF is a thick bodied polled heifer, ready to wean.

CALF: SHOWGIRL 4TH (P) (GLE 24V840E) **DOB:** 16/05/2024
SIRE: RANGAN TAMBO R37 (RAN R37E) (P)



Rejoined to Waterford Red Rascal (PP) R/F from 20/10/24.
Preg test details in supplementary sheet.

LOT
53

SCHARWYN
PHOEBE P31E (P)

TATTOO: LAS P31E
DOB: 08/09/2018

AYR INCA'S NATONE (AYR C258F)

RANGAN PARK PINAY F21 (RAN F21E) (P)

SIRE: MINNIE-VALE JONA (SGS J62E) (P)

DAM: SCHARWYN JANET (LAS J9E)

MINNIE-VALE SLUMBER E110E (SGS E110E) (P)

ASHWOOD PARK FLUTE (HAS F150E) (P)



December 2024 Australasian Charolais Single-Step BREEDPLAN

	CE Dir	GL	BW	200	400	600	Milk	SS	Carc Wt	EMA	Rump	IMF
EBV	+7.2	-4.3	-1.3	+5	+10	+10	+4	+0.5	+14	+2.6	-0.4	-0.2
Acc	40%	55%	59%	56%	52%	54%	42%	46%	42%	33%	36%	32%

COMMENTS: Very well made, good bodied daughter of M.V. Jona. Very gentle nature, an easy doing female, low BW and strong carcass data, the cross with "Red Rascal" will be a great one.



See video for weaned calf image.

Weaned polled bull calf by "Tambo" **DNA tested PP Polled**

CALF: TAMBO V807 (P) (GLE 24V807E)

DOB: 29/01/2024

SIRE: RANGAN TAMBO R37 (RAN R37E) (P)

Rejoined to Waterford Red Rascal (PP) R/F from 20/10/24. Preg test details in supplementary sheet.

LOT
54

SCHARWYN
NATALIE (P)

TATTOO: LAS N72E
DOB: 02/12/2017

AYR INCA'S NATONE (AYR C258F)

ROSDALE CASHIER (MR C132E) (P)

SIRE: MINNIE-VALE JONA (SGS J62E) (P)

DAM: ASHWOOD PARK FLIRTY (HAS F79E) (P)

MINNIE-VALE SLUMBER E110E (SGS E110E) (P)

ASHWOOD PARK CHLOE (HAS C2E) (P)



December 2024 Australasian Charolais Single-Step BREEDPLAN

	CE Dir	GL	BW	200	400	600	Milk	SS	Carc Wt	EMA	Rump	IMF
EBV	+4.3	-3.8	-1.5	+6	+12	+12	+6	+0.8	+10	+1.3	+0.4	-0.2
Acc	46%	58%	64%	54%	51%	53%	42%	39%	40%	28%	29%	26%

COMMENTS: Early maturing low BW female, double polled daughter of M.V. Jona. Dam is from Gunnadoo and Cigar bloodlines.



CAF is a low BW, very easy finishing double polled bull by "Tambo". Ready to wean.

CALF: TAMBO V844 (P)

(GLE 24V844E)

DOB: 17/06/2024

SIRE: RANGAN TAMBO R37 (RAN R37E) (P)

Rejoined to Waterford Red Rascal (PP) R/F from 20/10/24. Preg test details in supplementary sheet.

LOT
55

WITHDRAWN

SCHARWYN
PHOEBE (P)

TATTOO: LAS P53E
DOB: 01/11/2018

LOT
56

SPINIFEX
GRACE TABITHA (P)

TATTOO: SPI 22T4E
DOB: 24/02/2022

AYR INCA'S NATONE (AYR C258F)
SIRE: MINNIE-VALE JONA (SGS J62E) (P)
MINNIE-VALE SLUMBER E110E (SGS E110E) (P)

LITTLE VALLEY GRANDIOSE (GKB G5E) (P)
DAM: ORARA WATERFALL GRACE 9TH (WFA N57E) (P)
JACKSON GRACE (MEJ G26E) (P)

December 2024 Australasian Charolais Single-Step BREEDPLAN

	CE Dir	GL	BW	200	400	600	Milk	SS	Carc Wt
EBV	+4.0	-3.2	-1.0	+8	+14	+20	+7	+0.7	+15
Acc	39%	54%	61%	53%	50%	52%	39%	43%	40%

CALF: GLE 24V105E DOB: 12/09/2024
SIRE: LT LEDGER (P) (OAU Q8664E)

	EMA	Rump	IMF
EBV	+2.1	-0.1	+0.0
Acc	29%	32%	28%

COMMENTS: Early maturing young 1st calver, good carcass and data, easy doing type. Dam is high was purchased from our 2021 sale as a joined 2 yo heifer. CAF is a neat early maturing heifer.



Preg test details in supplementary sheet.

Rejoined to Waterford Red Rascal (PP) R/F from 20/10/24.

LOT
57

SCHARWYN
SHOWGIRL S59

TATTOO: LAS S59E
DOB: 11/11/2021

PALGROVE JAGUAR J629E (PK J629E) (P)
SIRE: MINNIE-VALE MASCOT (SGS M97E) (P)
MINNIE-VALE UTOPIE H82E (SGS H82E)

BOONGATTI E49 (BOO E49E)
DAM: SCHARWYN SHOWGIRL H27E (LAS H27E) (P)
RANGAN PARK SHOWGIRL E14 (RAN E14E) (P)

December 2024 Australasian Charolais Single-Step BREEDPLAN

	CE Dir	GL	BW	200	400	600	Milk	SS	Carc Wt
EBV	+0.2	-0.4	+0.7	+11	+17	+27	+1	+0.7	+16
Acc	37%	47%	62%	51%	48%	48%	37%	41%	37%

COMMENTS: Good frame, big volume, outstanding bull breeding type female. Another daughter of M.V. Mascot, what an outstanding line of young females by him. Such a great opportunity to buy a line of females that have zero faults!

	EMA	Rump	IMF
EBV	+0.7	-0.5	-0.1
Acc	30%	34%	29%



Preg test details in supplementary sheet.

Rejoined to Waterford Red Rascal (PP) R/F from 20/10/24.

LOT
58

SCHARWYN
SHOWGIRL S41 (AI) (P)

TATTOO: LAS S41E
DOB: 28/09/2021

GLENLEA HONOURABLE (VLW H25E) (P)
SIRE: CHALLAMBI POWELL (CHA P22E) (P)
CHALLAMBI HUSSY H5 (CHA H5E) (P)

MINNIE-VALE JONA (SGS J62E) (P)
DAM: SCHARWYN SHOWGIRL N59 (LAS N59E) (P)
SCHARWYN SHOWGIRL K19E (LAS K19E) (P)

December 2024 Australasian Charolais Single-Step BREEDPLAN

	CE Dir	GL	BW	200	400	600	Milk	SS	Carc Wt
EBV	-1.2	-2.5	-0.1	+8	+13	+22	+2	+0.4	+13
Acc	35%	70%	66%	50%	46%	47%	35%	43%	36%

COMMENTS: Beautiful double polled female, long bodied, very docile, ideal balance of carcass and finish, with low BW. Her sire Challambi Powell (P) was selected to use in an A.I. program to add bone and overall carcass while maintaining moderate BW, Powell is by Impact sire Glenlea Honorable (P) R/F.

	EMA	Rump	IMF
EBV	+1.7	+0.1	+0.1
Acc	30%	34%	30%



Preg test details in supplementary sheet.

Rejoined to Waterford Red Rascal (PP) R/F from 20/10/24.

LOT
59

SCHARWYN SABRINA (AI) (P)

TATTOO: LAS S44E
DOB: 07/10/2021

GLENLEA HONOURABLE (VLW H25E) (P)
SIRE: CHALLAMBI POWELL (CHA P22E) (P)
CHALLAMBI HUSSY H5 (CHA H5E) (P)

MINNIE-VALE JONA (SGS J62E) (P)
DAM: SCHARWYN NICOLE (LAS N78E)
SCHARWYN JACQUELYN (LAS J42E)

December 2024 Australasian Charolais Single-Step BREEDPLAN

	CE Dir	GL	BW	200	400	600	Milk	SS	Carc Wt
EBV	-5.7	-1.9	+1.0	+10	+15	+26	+1	+0.4	+13
Acc	35%	69%	65%	50%	46%	47%	35%	43%	36%

COMMENTS: $\frac{3}{4}$ sister to previous lot, Powell X Jona daughter, long bodied, balanced data. What a great pair they would make in your paddock!

	EMA	Rump	IMF
EBV	+1.5	+0.2	+0.2
Acc	30%	34%	29%

We have retained her 2024 heifer calf.



Preg test details in supplementary sheet.

Rejoined to Waterford Red Rascal (PP) R/F from 20/10/24.

LOT
60

SCHARWYN STATICE (P)

TATTOO: LAS S15E
DOB: 14/04/2021

PALGROVE JAGUAR J629E (PK J629E) (P)
SIRE: MINNIE-VALE MASCOT (SGS M97E) (P)
MINNIE-VALE UTOPIE H82E (SGS H82E)

MINNIE-VALE JONA (SGS J62E) (P)
DAM: SCHARWYN POPPY (LAS P35E) (P)
SCHARWYN LACIE (LAS L26E) (P)

December 2024 Australasian Charolais Single-Step BREEDPLAN

	CE Dir	GL	BW	200	400	600	Milk	SS	Carc Wt
EBV	+1.0	-0.7	+0.3	+10	+17	+23	+1	+0.7	+15
Acc	34%	47%	55%	53%	49%	49%	36%	42%	38%

COMMENTS: The overall carcass of these females will breed bulls for any market, just match them to the right sires. Mascot X Jona female again, double polled, docile. What a cross with the growth, extra finish high IMF% of "Quintus". We have retained her 2024 heifer calf.

	EMA	Rump	IMF
EBV	+1.0	-0.3	-0.1
Acc	29%	32%	28%



Preg test details in supplementary sheet.

Rejoined to Glenlea Quintus (PP) R/F from 20/10/24.

LOT
61

SCHARWYN SELENA (P) (TW)

TATTOO: LAS S52E
DOB: 21/10/2021

ELDER'S BLACKJACK 788B (OAC K788E) (P)
SIRE: SPINIFEX BLACKJACK (SPI Q1E) (P)
ALLEDNAW CAROL H8E (AKT H8E)

MINNIE-VALE JONA (SGS J62E) (P)
DAM: SCHARWYN NANCY (LAS N36E)
SCHARWYN HARMONY (LAS H18E) (P)

December 2024 Australasian Charolais Single-Step BREEDPLAN

	CE Dir	GL	BW	200	400	600	Milk	SS	Carc Wt
EBV	+3.7	-3.9	-0.8	+8	+17	+23	+8	+1.6	+18
Acc	35%	50%	61%	53%	49%	49%	37%	45%	38%

COMMENTS: Early maturing, polled, amazing carcass data, low BW. Another M.V. Jona Dam.

	EMA	Rump	IMF
EBV	+2.9	+0.7	-0.1
Acc	32%	36%	31%

We have retained her 2024 bull calf.



Preg test details in supplementary sheet.

Rejoined to Glenlea Quintus (PP) R/F from 20/10/24.

LOT
62

SCHARWYN TESSA (P)

TATTOO: LAS 22T32E
DOB: 29/07/2022

PALGROVE JAGUAR J629E (PK J629E) (P)
SIRE: MINNIE-VALE MASCOT (SGS M97E) (P)
MINNIE-VALE UTOPIE H82E (SGS H82E)

LT VENTURE 3198 (OAU J5612E) (P)
DAM: SCHARWYN PENNY (LAS P56E) (P)
SCHARWYN MISTY (LAS M33E) (P)

December 2024 Australasian Charolais Single-Step BREEDPLAN

	CE Dir	GL	BW	200	400	600	Milk	SS	Carc Wt
EBV	+4.8	-1.8	-1.2	+12	+24	+32	+9	+1.3	+22
Acc	38%	53%	59%	57%	54%	53%	43%	49%	43%

COMMENTS: Outstanding Mascot daughter, double polled, dam is lot 40, LT Venture daughter. Low BW yet above average in nearly every other EBV trait, easy to breed high selling stock out of class females like this.

	EMA	Rump	IMF
EBV	+1.0	+1.6	+0.3
Acc	36%	42%	36%



Rejoined to Waterford Red Rascal (PP) R/F from 20/10/24.

LOT
63

HARBENVALE RUBY R111 (P) (R/F) (TW)

TATTOO: HBV R111E
DOB: 10/08/2020

LT LEDGER 0332 (OAU F3168E) (P)
SIRE: WINCHESTER BLIZZARD N2E (GAV N2E) (P)
WINCHESTER DAISY DUKE D3E (GAV D3E) (P)

ROSEDALE H78 (MR H78E) (P)
DAM: HARBENVALE RUBY M136 (HBV M136E) (P)
HARBENVALE RUBY J167 (HBV J167E) (P)

December 2024 Australasian Charolais Single-Step BREEDPLAN

	CE Dir	GL	BW	200	400	600	Milk	SS	Carc Wt
EBV	-0.9	-4.0	-0.1	+11	+19	+25	+5	+1.6	+13
Acc	43%	53%	65%	58%	55%	55%	45%	48%	43%

COMMENTS: An easy doing, easy finishing young female, light red factor, outcross sire to all females in this sale, dam is all Rosedale breeding. Her mating to "Red Rascal" could produce an outstanding red factor calf. We have retained her 2024 bull calf.

	EMA	Rump	IMF
EBV	+1.3	+2.4	+0.5
Acc	35%	40%	34%



Rejoined to Waterford Red Rascal (PP) R/F from 20/10/24.

LOT
64

SCHARWYN BRONWIN P52E (AI) (P)

TATTOO: LAS P52E
DOB: 29/10/2018

SILVERSTREAM ENTICER E30 (OAN E30E) (P)
SIRE: SILVERSTREAM GEDDES G102 (OAN G102D) (P)
SILVERSTREAM DOLLY V5 (OAN Z5C)

RANGAN PARK GAUGUIN C15 (RAN C15E) (P)
DAM: SCHARWYN BRONWIN (LAS F3E) (P)
RANGAN PARK BRONWIN D52 (RAN D52E) (P)

December 2024 Australasian Charolais Single-Step BREEDPLAN

	CE Dir	GL	BW	200	400	600	Milk	SS	Carc Wt
EBV	-3.5	-0.6	+1.3	+12	+31	+40	+2	+1.3	+26
Acc	53%	69%	68%	64%	63%	63%	57%	60%	55%

COMMENTS: Big volumed early maturing female, very docile, excellent data well above average across most EBV traits. Dam from nationally recognised cow family, the only "Geddes" sired female in the sale. We have retained her 2024 heifer calf.

	EMA	Rump	IMF
EBV	+2.6	-0.1	+0.1
Acc	48%	54%	48%



Rejoined to Waterford Red Rascal (PP) R/F from 20/10/24.

LOT
65

SCHARWYN
GLITZ (P)

TATTOO: LAS 22T30E
DOB: 14/06/2022

AYR INCA'S NATONE (AYR C258F)

GLENLEA JUST RED (GLE J5E) (P)

SIRE: MINNIE-VALE JONA (SGS J62E) (P)

DAM: GLENLEA GLITZ4TH (GLE R13E) (P)

MINNIE-VALE SLUMBER E110E (SGS E110E) (P)

ORARA WATERFALL GLENLEA GLITZ 2ND (WFA K30E) (P)

COMMENTS: These next four first calvers, recovering from drought conditions and calved while adapting to the north coast environment, tough young ladies and will go anywhere and thrive! They are doing a great job on their calves, rejoined to our new red Charolais sire Glenlea Ulysses Red (PP) R/F see reference sires. T30 from previous lots by Jona you know what she will look like as she matures, great data across the board, dam is lot 31. CAF bull calf by LT Countdown.



December 2024 Australasian Charolais Single-Step BREEDPLAN

	CE Dir	GL	BW	200	400	600	Milk	SS	Carc Wt	EMA	Rump	IMF
EBV	+0.0	-3.2	+0.4	+12	+23	+29	+5	+0.8	+19	+2.7	+0.4	+0.3
Acc	40%	54%	63%	55%	51%	53%	39%	46%	41%	31%	34%	30%



CALF: COUNTDOWN V130 (AI) (P)
(GLE 24V130E) DOB: 10/11/2024
SIRE: LT COUNTDOWN 9712 PLD (P)
(OAU Q8753E)



Rejoined from 20/12/24
to Glenlea Ulysses Red (PP) R/F - Reference sire.

LOT
66

SCHARWYN
SHOWGIRL T22 (P)

TATTOO: LAS 22T22E
DOB: 10/05/2022

AYR INCA'S NATONE (AYR C258F)

MINNIE-VALE MASCOT (SGS M97E) (P)

SIRE: MINNIE-VALE JONA (SGS J62E) (P)

DAM: SCHARWYN SHOWGIRL Q15E (LAS Q15E) (P)

MINNIE-VALE SLUMBER E110E (SGS E110E) (P)

SCHARWYN SHOWGIRL H27E (LAS H27E) (P)



December 2024 Australasian Charolais Single-Step BREEDPLAN

	CE Dir	GL	BW	200	400	600	Milk	SS	Carc Wt	EMA	Rump	IMF
EBV	+5.4	-1.9	-0.6	+7	+12	+15	+2	+0.8	+13	+1.9	-0.4	-0.2
Acc	36%	48%	60%	52%	48%	50%	37%	40%	39%	27%	30%	26%

COMMENTS: Double polled, lovely type, perfect udder. These M.V. Jona females will be producing stud progeny into the 2030's great investment. Dam is lot 44.

Very nice polled heifer CAF

CALF: SHOWGIRL 10TH (AI) (P) (TW) (GLE 24V114E)
DOB: 27/10/2024
SIRE: LT COUNTDOWN 9712 PLD (P) (OAU Q8753E)



Rejoined from 20/12/24
to Glenlea Ulysses Red (PP) R/F - Reference sire.

LOT
67

SCHARWYN
TRINITY (P)

TATTOO: LAS 22T23E
DOB: 10/05/2022

PALGROVE JAGUAR J629E (PK J629E) (P)
SIRE: MINNIE-VALE MASCOT (SGS M97E) (P)
MINNIE-VALE UTOPIE H82E (SGS H82E)

MINNIE-VALE JONA (SGS J62E) (P)
DAM: SCHARWYN PRISCILLA (LAS P40E)
MOUNT WILLIAM FAMOUS F48 (BS F48E)

December 2024 Australasian Charolais Single-Step BREEDPLAN												
	CE Dir	GL	BW	200	400	600	Milk	SS	Carc Wt	EMA	Rump	IMF
EBV	+3.0	-1.3	+0.7	+12	+21	+30	+3	+0.9	+18	+1.5	-0.3	-0.2
Acc	35%	46%	60%	53%	50%	49%	38%	43%	39%	30%	34%	29%

COMMENTS: Big strong first calver, another Mascot x Jona female, with Dam's cow family originating at the Mt William herd in Victoria. Doing a great job on her calf.

CAF polled heifer calf.

CALF: TRINITY 2ND (P) (GLE 24V143E)
DOB: 23/11/2024
SIRE: LIBERTY SHADOW BOXER S12E (Y1K S12E) (P)



Rejoined from 20/12/24
to Glenlea Ulysses Red (PP) R/F - Reference sire.

LOT
68

SCHARWYN
TAMARA (P)

TATTOO: LAS 22T17E
DOB: 09/03/2022

PALGROVE JAGUAR J629E (PK J629E) (P)
SIRE: MINNIE-VALE MASCOT (SGS M97E) (P)
MINNIE-VALE UTOPIE H82E (SGS H82E)

PARINGA RIO BRAVO D213E (TOL D213E) (P)
DAM: SCHARWYN HARRIET (LAS H23E) (P)
ASHWOOD PARK FLIRTY (HAS F79E) (P)

December 2024 Australasian Charolais Single-Step BREEDPLAN												
	CE Dir	GL	BW	200	400	600	Milk	SS	Carc Wt	EMA	Rump	IMF
EBV	+6.5	-2.7	-1.1	+12	+21	+30	+8	+0.7	+14	+0.5	+1.9	+0.5
Acc	40%	47%	64%	53%	50%	49%	41%	44%	41%	35%	38%	34%

COMMENTS: Long bodied, moderate first calver, low BW, double polled, great udder, good calf.

CAF polled heifer calf by "Shadow Boxer".

CALF: TAMARA 2ND (P) (GLE 24V144E)
DOB: 24/11/2024
SIRE: LIBERTY SHADOW BOXER S12E (Y1K S12E) (P)



Rejoined from 20/12/24
to Glenlea Ulysses Red (PP) R/F - Reference sire.

LOT
69

WITHDRAWN

CHARWYN
TIFANY

TATTOO: LAS 22T19E
DOB: 01/04/2022

LOT
70

SCHARWYN TEAGAN (AI) (P)

TATTOO: LAS 22T12E
DOB: 18/02/2022

SCR TUFFY 0119 (PED F7626E) (P)

SIRE: SCR TRIUMPH 2135 (OAC H5788E) (P)

SCR MS BABY DOLL 7140 (PED C6627E) (P)

ROSEDALE CASHIER (MR C132E) (P)

DAM: ASHWOOD PARK FLIRTY (HAS F79E) (P)

ASHWOOD PARK CHLOE (HAS C2E) (P)

December 2024 Australasian Charolais Single-Step BREEDPLAN

	CE Dir	GL	BW	200	400	600	Milk	SS	Carc Wt
EBV	-1.0	-6.0	-0.5	+15	+25	+30	+3	+0.6	+16
Acc	42%	61%	68%	59%	57%	57%	38%	54%	46%

COMMENTS: The only female by AI sire SCR Triumph (P) in the sale. Low BW, early maturing, T12 is an easy doing, gentle heifer heavy in calf.

DNA tested PP Polled

	EMA	Rump	IMF
EBV	-0.9	+1.0	+0.3
Acc	38%	46%	37%



Due to calve February / March to Rangan Park Tambo (PP) RAN R37E

LOT
71

SPINIFEX TAHLIA (AI) (P)

TATTOO: SPI 22T1E
DOB: 24/01/2022

LT LONGNECK 3031 PLD M835582 (PED J5582E) (P)

SIRE: LT DEL REY 6161 M880361 (OAU M361E) (P)

LT MAXINE 7908 EF1072861 (PED C2861E) (P)

MINNIE-VALE MASCOT (SGS M97E) (P)

DAM: SCHARWYN QUEENIE (LAS Q9E) (P)

SCHARWYN FINESSE (LAS F8E) (P)

December 2024 Australasian Charolais Single-Step BREEDPLAN

	CE Dir	GL	BW	200	400	600	Milk	SS	Carc Wt
EBV	+8.9	-1.8	-2.0	+11	+25	+26	+11	+0.5	+19
Acc	37%	59%	61%	59%	57%	55%	36%	54%	44%

COMMENTS: Early maturing, thick bodied heifer, by A.I. sire LT Del Rey (PP). Low BW and top 1% of breed for fat cover and IMF%. Will produce progeny that will be soft and easy finishing.

DNA tested PP Polled

	EMA	Rump	IMF
EBV	+1.4	+3.1	+1.1
Acc	38%	45%	37%



Due to calve February / March to Rangan Park Tambo (PP) RAN R37E



Lot 67 with calves on "T" heifers, Lots 65 to 68.



**LT COUNTDOWN 9712 PLD (P)
OAU Q8753E**

**Outstanding Low BW
sire from USA.**

Photo at 16 months.

Sire of calves on lots 22, 23, 46, 47, 48, 65 and 66.

Elite Unjoined Red Heifers

This special offering showcases a small but exceptional group of unjoined red heifers, selected from the top of our replacement heifer program.

► Lots 72 to 75 were born and raised on the sub-tropical north coast and include three daughters of our exciting new stud sire, Waterford Red Rascal (PP) R/F WET R121E, a son of Moongool Monopoly (P), the Grand Champion at both BEEF 2018 and Brisbane Royal the same year. Another standout in this group is sired by Challambi Rover (PP) R/F CHA R24E, a performance leader with a +60 EBV for 600-day weight, from the renowned Palgrove Hannibal (P) R/F line.

► Lots 75 and 76 hail from Nowra on the NSW south coast and are yearling daughters of Glenlea Kowboy (P) R/F, a sire with many outstanding progeny featured throughout this sale.

These heifers embody the leading edge of our breeding program: red factor, Polled and PP Polled, with industry-leading growth, maternal traits, and carcass quality combined with easy finishing ability.

All six heifers come from exceptional cows with deep, reliable cow family foundations. Their preparation for this sale has been minimal, with the animals coming directly from their contemporary group in the paddock.

These heifers are for building or advancing a breeding program, with potential as show prospects or top-tier foundation females.

LOT
72

GLENLEA
SANDY 9TH (P) (R/F)

TATTOO: GLE 23U190E
DOB: 12/09/2023

MOONGOOL MONOPOLY (DP2 M513E) (P)
SIRE: WATERFORD RED RASCAL (WET R121E) (P)
WATERFORD YOU KAN KAN H57E (WET H57E) (P)

GLENLEA HONOURABLE (VLW H25E) (P)
DAM: GLENLEA SANDY 2ND (GLE M70E) (P)
MULLUM SANDY 2 (BLA D8E) (P)

December 2024 Australasian Charolais Single-Step BREEDPLAN

Charolais	CE Dir	GL	BW	200	400	600	Milk	SS	Carc Wt
EBV	-8.7	-0.2	+2.0	+13	+30	+40	+4	+0.3	+24
Acc	33%	50%	57%	51%	48%	48%	36%	48%	38%

COMMENTS: Deep square heifer, dark red from both red parents. By the carcass sire Red Rascal out of a powerful Honorable cow that has bred standout progeny, maternal sister sold for \$8000 at 10 months old, 1 sister retained. Very hard to offer our best red heifer's but here they are. Powerful EBV's, she will breed high value progeny and breed them apricot to most white bulls. **DNA Tested Polled**

	EMA	Rump	IMF
EBV	+1.9	+0.0	+0.3
Acc	33%	38%	32%



Unjoined.
Ready to join
or flush.

LOT
73

GLENLEA
DIGIT 7TH (P) (R/F)

TATTOO: GLE 23U197E
DOB: 15/09/2023

MOONGOOL MONOPOLY (DP2 M513E) (P)
SIRE: WATERFORD RED RASCAL (WET R121E) (P)
WATERFORD YOU KAN KAN H57E (WET H57E) (P)

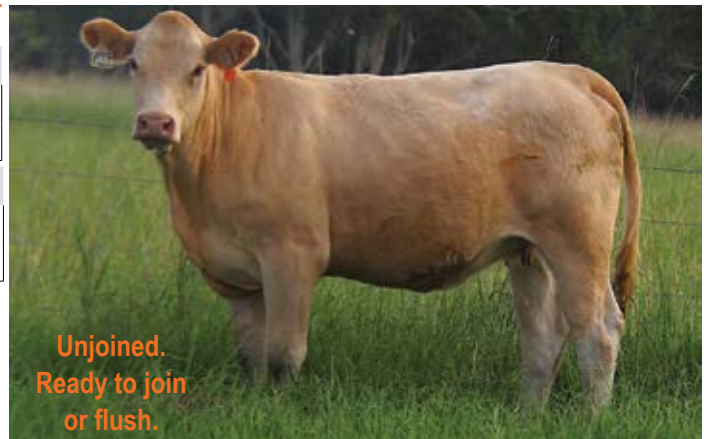
RANGAN PINAY F21 N171 (RAN N171E) (P)
DAM: HUON DIGIT 18 (DG1 R5E) (P)
PALGROVE F125E (PK F125E) (P)

December 2024 Australasian Charolais Single-Step BREEDPLAN

Charolais	CE Dir	GL	BW	200	400	600	Milk	SS	Carc Wt
EBV	+4.3	-2.3	-0.1	+6	+21	+23	+10	+0.5	+18
Acc	32%	53%	61%	55%	53%	51%	38%	53%	41%

COMMENTS: Neat early maturing heifer, high yielding carcass, good bone, fine hair type, Low BW. Could compete in the showring and will breed great progeny for certain. Dam is from another nationally known cow family originating from Palgrove. **DNA tested PP Polled**

	EMA	Rump	IMF
EBV	+1.1	-1.0	+0.5
Acc	36%	44%	35%



Unjoined.
Ready to join
or flush.

LOT
74

GLENLEA
APPEAL 8TH (P) (R/F)

TATTOO: GLE 23U157E
DOB: 18/08/2023

PALGROVE HANNIBAL (PK H1312E) (P)
SIRE: CHALLAMBI ROVER (CHA R24E) (P)
CHALLAMBI HIGHNESS M9 (CHA M9E) (P)

PALGROVE BECKHAM S 251404XBC01282 (PK B417E) (P/S)
DAM: DOUGLASDALE APPEAL 19 (DOU N8E) (P)
DOUGLASDALE LOTS OF APPEAL (DOU L9E)

December 2024 Australasian Charolais Single-Step BREEDPLAN

Charolais	CE Dir	GL	BW	200	400	600	Milk	SS	Carc Wt
EBV	-9.4	-3.4	+1.2	+14	+32	+43	+12	+1.5	+27
Acc	36%	54%	57%	53%	50%	50%	40%	47%	40%

COMMENTS: Powerful female, growth, length of body and softness, will grow into a beautiful highly productive cow. Breed leading EBV's with moderate BW. Dam and Grand Dam were successful show cows and again originating from nationally recognized cow family at Palgrove. **DNA tested PP Polled**

	EMA	Rump	IMF
EBV	+3.0	+0.9	+0.6
Acc	35%	40%	34%



Unjoined.
Ready to join
or flush.

LOT
75

GLENLEA
MAY 1ST (P) (R/F)

TATTOO: GLE 23U196E
DOB: 20/09/2023

MOONGOOL MONOPOLY (DP2 M513E) (P)
SIRE: WATERFORD RED RASCAL (WET R121E) (P)
WATERFORD YOU KAN KAN H57E (WET H57E) (P)

RANGAN ROUNDUP K18 (RAN K18E) (P)
DAM: HUON MAY 17 (DG1 N55E) (P)
BAROOLA MAY G395E (NCF G395E) (P)

December 2024 Australasian Charolais Single-Step BREEDPLAN

	CE Dir	GL	BW	200	400	600	Milk	SS	Carc Wt
EBV	+2.3	-2.3	+0.3	+13	+31	+38	+7	+1.4	+27
Acc	32%	48%	57%	50%	47%	48%	35%	48%	37%

COMMENTS: Big strong heifer, extra body and good bone, will develop into big volumed powerful cow. great EBV's with Moderate BW and well above average growth with high yielding carcass. Dam is strong deep bodied cow, Grand Dam is still in our herd at 14 years old.
DNA tested PP Polled

	EMA	Rump	IMF
EBV	+1.7	-1.4	-0.1
Acc	32%	39%	32%



Unjoined.
Ready to join
or flush.

These next two lots are located at Nowra on south coast under different management and nutrition.

LOT
76

TAYLOR
ESTELLA 8TH (P) (R/F)

TATTOO: TC3 23U13E
DOB: 09/08/2023

WON-CANYA KOWBOY (RJU K4E) (P/S)
SIRE: GLENLEA KOWBOY RED Q405 (GLE Q405E) (P)
GLENLEA NOLANA 60TH (GLE G1E) (P/S)

PALGROVE HERITAGE H135 (PK H135E) (P)
DAM: PALGROVE ESTELLA L192E (PK L192E) (P)
PALGROVE ESTELLA 350 (PK F1198E)

December 2024 Australasian Charolais Single-Step BREEDPLAN

	CE Dir	GL	BW	200	400	600	Milk	SS	Carc Wt
EBV	-8.1	+1.0	+1.6	+5	+14	+27	+13	-0.3	+12
Acc	37%	59%	65%	61%	58%	58%	43%	60%	46%

COMMENTS: Classy slick skinned female, outstanding dam from another nationally recognized cow family, tremendous milking ability in these L192 daughters with 2 retained sisters. By Kowboy who breeding outstanding progeny, we have used 3 Kowboy sons in the stud in 2024. **DNA Tested Polled**

	EMA	Rump	IMF
EBV	-0.1	+1.4	+0.7
Acc	41%	47%	40%



Unjoined.
Ready to join
or flush.

LOT
77

TAYLOR
SOFTLY (P) (R/F)

TATTOO: TC3 23U14E
DOB: 15/08/2023

WON-CANYA KOWBOY (RJU K4E) (P/S)
SIRE: GLENLEA KOWBOY RED Q405 (GLE Q405E) (P)
GLENLEA NOLANA 60TH (GLE G1E) (P/S)

RANGAN PINAY F21 N171 (RAN N171E) (P)
DAM: HUON SOFTLY 2 (DG1 R6E) (P)
MULLUM SOFTLY 4 (BLA H39E) (P)

December 2024 Australasian Charolais Single-Step BREEDPLAN

	CE Dir	GL	BW	200	400	600	Milk	SS	Carc Wt
EBV	-9.6	-2.1	+3.0	+14	+27	+42	+8	+1.2	+21
Acc	32%	59%	67%	59%	58%	57%	35%	59%	44%

COMMENTS: Powerful performance heifer, bred leading growth and well above average yield, great overall carcass shape, easy finishing. Dam is a heavy milking "Pinay" influenced cow, from another powerful producing cow family. This heifer will produce high value progeny as all these Red heifers will, a great investment.
DNA Tested Polled

	EMA	Rump	IMF
EBV	+1.2	-0.3	-0.3
Acc	39%	47%	38%



Unjoined.
Ready to join
or flush.

A Rare Opportunity

LUMEAH Mixed Age Cows & Calves

We are thrilled to present this outstanding group of 25 cows and calves, joined to the exceptional GLENLEA KOWBOY (P) R/F. Located at “Lumeah,” 40km west of Coonabarabran in central western NSW, these cows have thrived through a fantastic season, boasting excellent body condition, with many weighing between 700 and 800kg post-calving.

This group of predominantly white cows, with just two red factor individuals, is accompanied by a striking set of red factor calves sired by “Kowboy.” The photo of the calves says it all – a remarkable opportunity to acquire proven breeders with exceptional calves at foot, perfect for establishing or expanding a red factor Charolais herd.

At Glenlea, we deeply value the role of mature cows in building enduring herds. These cows represent the best of their kind: survivors of droughts and floods, reliable calvers with excellent udders, and proven producers of robust, high-performing offspring. These are the cows that form the foundation of families that last for decades. This group, from the “Heart of the Herd,” has earned its place and stayed with us when others were culled. We’re now offering them as part of this special sale, providing both long-time and new clients the chance to secure Charolais females with red factor calves at foot – an offering unmatched by any other stud in Australia.

Most cows in this group were part of the renowned Fairfield herd purchase Glenlea made in 2021. While the Fairfield cows are recorded with the Charolais Society, their registrations had lapsed years prior and moved to stock-books recording. Rest assured, all cows have pedigrees, and their calves are registered, with mid-parent EBVs provided. All future calves from these cows will also be eligible for registration.

Please note: unless otherwise stated, Fairfield cows in this offering are not currently registered with the Charolais Society but are recorded in the database as purebred base dams. For any additional details or clarification, feel free to contact Rod Binny directly.

This is an extraordinary opportunity to secure proven genetics, unparalleled longevity, and calves with the potential to drive your herd’s success for generations.



17 calves a few days old to 5 weeks born at time of photo. All sired by Glenlea Kowboy Red (P) R/F

LOT
78

GLENLEA
DESIRE 28TH (P)

TATTOO: GLE P29E
DOB: 21/06/2018

GALLWAY - RS (OAF G1063F) (P)

RANGAN PARK RIO BRAVO D15 (RAN D15E) (P)

SIRE: **CHARNELLE LOUIS (GKA L73E) (P)**

DAM: **GLENLEA DESIRE 23RD (GLE L27E) (P)**

CHARNELLE ELLE (GKA E10E) (P)

GLENLEA DESIRE 21ST (GLE H34E) (P)



December 2024 Australasian Charolais Single-Step BREEDPLAN

	CE Dir	GL	BW	200	400	600	Milk	SS	Carc Wt	EMA	Rump	IMF
EBV	+5.3	-4.5	-0.8	+10	+23	+27	+9	+1.0	+21	+3.6	+1.4	+0.5
Acc	46%	61%	69%	62%	60%	61%	49%	62%	50%	44%	49%	43%

COMMENTS: Magnificent double polled cow with outstanding **red polled bull calf born 23/12/24** who is a sire prospect.

Very easy doing, very quiet, great milker, calving ease and leading carcass data, an outstanding Glenlea cow. Registered with Charolais Society.



LOT
79

CALMVIEW
MAI Q58E (P) (R/F)

TATTOO: CVW Q58E
DOB: 30/07/2019

PALGROVE HERITAGE H135 (PK H135E) (P)

KENMERE GRAND MASTER (MCS G6E) (P)

SIRE: **PALGROVE MASTERPLAN (PK M709E) (P)**

DAM: **TEMANA MIA M29E (TJ M29E)**

PALGROVE PANACHE 250 (PK F208E) (P)

TEMANA J107E (TJ J107E) (P)



December 2024 Australasian Charolais Single-Step BREEDPLAN

	CE Dir	GL	BW	200	400	600	Milk	SS	Carc Wt	EMA	Rump	IMF
EBV	-2.5	-2.3	+0.0	+0	+7	+4	+16	+0.3	+1	+1.8	+4.2	+1.1
Acc	44%	61%	74%	70%	68%	65%	54%	65%	55%	48%	57%	49%

COMMENTS: Lovely easy doing red factor cow with a **Low BW red, polled heifer calf at foot born 30/12/24**.

Bomb proof temperament, great milker. Breed leading fat cover EBV's. Registered with Charolais Society.

DNA tested PP Polled



LOT
80

WATERFORD
RADIANT R39E (P) (R/F)

TATTOO: WET R39E
DOB: 10/09/2020

COLINTA LEVI (ISA L5044E) (P)

PALGROVE HERMES (PK H549E) (P)

SIRE: WATERFORD POINT TAKEN P31E (WET P31E) (P)

DAM: WATERFORD PRINCESS DIANNA N50E (WET N50E) (P)

WATERFORD DIAMOND H17E (WET H17E)

MOONGOOL DIANNA 2 (DP2 J254E) (P)



December 2024 Australasian Charolais Single-Step BREEDPLAN

	CE Dir	GL	BW	200	400	600	Milk	SS	Carc Wt	EMA	Rump	IMF
EBV	+1.9	-2.3	+1.0	+8	+17	+22	+1	+1.4	+13	+0.2	+0.0	-0.3
Acc	37%	59%	67%	50%	47%	48%	36%	44%	38%	35%	39%	34%

COMMENTS: Early maturing, thick bodied young cow, double polled great udder. Registered with Charolais Society.

An outstanding Red, Poll/scur bull calf born 23/12/24.



LOT
81

DOUGLASDALE
KIMBERLEY (P)

TATTOO: DOU K40E
DOB: 02/10/2014

PALGROVE VIAGRA (PK V92E) (P)

UFANO FR (IAF Y5328F) (P)

SIRE: DOUGLASDALE VIAGRA (DOU C6E) (P)

DAM: DOUGLASDALE FESTOON 129 (DOU D14E)

PALGROVE BRONWIN 73 (PK Y275E)

PALGROVE FESTOON 129 (PK Z418E)



December 2024 Australasian Charolais Single-Step BREEDPLAN

	CE Dir	GL	BW	200	400	600	Milk	SS	Carc Wt	EMA	Rump	IMF
EBV	+10.5	-3.6	-0.5	+7	+14	+16	+11	+0.5	+17	+2.6	-1.2	-0.2
Acc	43%	52%	65%	52%	51%	53%	44%	42%	42%	33%	35%	32%

COMMENTS: Early maturing low BW poll cow, tremendous milker, fine coated, very docile. Registered with Charolais Society.

Excellent Red poll/scur bull calf born 26/12/24.



LOT
82

DOUGLASDALE
LORETTA

TATTOO: DOU L3E
DOB: 01/01/2015

LT WYOMING WIND 4020 PLD (OAU P4020E) (P)

ANC ZORBA (ANC Z545F)

SIRE: DOUGLASDALE WYOMING (DOU E2E)

DAM: BARAMBAH-DALE BRIDESMAID (DAV B100E)

PALGROVE APPEAL 16 (PK Y100E) (P)

BARAMBAH-DALE FARADAY'S RAYLENE (DAV Y14E)



December 2024 Australasian Charolais Single-Step BREEDPLAN

	CE Dir	GL	BW	200	400	600	Milk	SS	Carc Wt	EMA	Rump	IMF
EBV	+6.9	-4.1	-0.6	+10	+18	+19	+8	+1.4	+15	+1.9	+0.2	+0.1
Acc	44%	48%	69%	52%	51%	54%	40%	39%	41%	30%	31%	29%

COMMENTS: Easy doing deep bodied cow, low BW combined with above average carcass data. Registered with Charolais Society.

Will calve to Kowboy prior to sale.



LOT
83

LVH-FAIRFIELD
P128 (P)

TATTOO: LVH P128
DOB: 1/1/18

SIRE: LVH-FAIRFIELD GRANDE (P) - LVHG74E

DAM: GOBONGO PENNY E132E - GOE132E



MID PARENT EBVs

	CE Dir	GL	BW	200	400	600	Milk	SS	Carc Wt	EMA	Rump	IMF
EBV	-2.0	-0.6	+1.1	+8	+14	+20	+6	+0.4	+14	+1.9	-0.1	0.0

COMMENTS: Lovely thick bodied polled female in her prime, gentle nature, outstanding bloodlines.

Will calve well before sale to Glenlea Kowboy (P) R/F.



LOT
84

LVH-FAIRFIELD
P359 (P)

TATTOO: LVH P359
DOB: 1/11/18

SIRE: LVH-FAIRFIELD HAHN (P) - LVHH288E

DAM: LVH-FAIRFIELD ZEFINE (P) - LVHE32E

MID PARENT EBVs									
CE Dir	GL	BW	200	400	600	Milk	SS	Carc Wt	
EBV	-2.0	-0.6	+1.1	+12	+20	+29	+4	+0.9	+17
			EMA	Rump	IMF				
EBV			+1.1	+0.4	-0.1				

COMMENTS: Magnificent big soft polled female in her prime. Docile, perfect udder. **Outstanding red, polled bull calf born 8/1/25 by Kowboy.**



LOT
85

LVH-FAIRFIELD
Q347 (P/S)

TATTOO: LVH Q347
DOB: 10/09/19

SIRE: ADVANCE KODY K13 (P) (R/F) - ADVK13E

DAM: BAROOLA KARLA E105E E105 (AI) (ET) (P) - NCFE105E

MID PARENT EBVs									
CE Dir	GL	BW	200	400	600	Milk	SS	Carc Wt	
EBV	-1.5	-1.3	+1.3	+15	+31	+40	+7	+1.1	+23
			EMA	Rump	IMF				
EBV			+1.9	+1.0	+0.7				

COMMENTS: Medium framed, carcass, bone, great udder. **Will calve before sale to Kowboy.**



LOT
86

LVH-FAIRFIELD
N252 (P/S)

TATTOO: LVH N252
DOB: 31/12/17

SIRE: LVH-FAIRFIELD HOLBROOK - LVHH110E

DAM: LVH-FAIRFIELD WHERRY H200 (P) - LVHH200E

MID PARENT EBVs									
CE Dir	GL	BW	200	400	600	Milk	SS	Carc Wt	
EBV	-2.3	-1.1	+1.3	+12	+22	+35	+6	+0.9	+18
			EMA	Rump	IMF				
EBV			+1.4	+0.7	+0.1				

COMMENTS: Early maturing good doing cow, extra finish, very sound udder. **Very nice red Poll/scur bull calf at foot, born on 30/12/24.**



LOT
87

LVH-FAIRFIELD
N189 (P/S)

TATTOO: LVH N189
DOB: 1/11/17

SIRE: LVH-FAIRFIELD G-FORCE (P) - LVHG76E

DAM: LVH-FAIRFIELD DESIRE 4 (AI) (ET) - LVHE195F

MID PARENT EBVs									
	CE Dir	GL	BW	200	400	600	Milk	SS	Carc Wt
EBV	-13.6	+0.8	+2.9	+13	+20	+22	+5	-0.1	+13
				EMA	Rump	IMF			
EBV				+1.1	-1.3	-0.4			

COMMENTS: Early maturing, moderate poll / scur cow, great udder, Full French dam. **Outstanding red polled bull calf at foot born 23/12/24.**



LOT
88

ALLEDNAW
MATILDA M91 (P)

TATTOO: AKT M91A
DOB: 13/02/2016

ASHWOOD PARK DINDI (HAS D53E) (P)

SIRE: VERNOLA JUST RIGHT J6E (VIW J6E) (P/S)

DAM: ALLEDNAW J3Z (AKT J3Z) (P)

ASHWOOD PARK EBONY (HAS E1E)

December 2024 Australasian Charolais Single-Step BREEDPLAN									
	CE Dir	GL	BW	200	400	600	Milk	SS	Carc Wt
EBV	+2.3	-3.1	+0.7	+13	+28	+38	+7	+0.9	+27
Acc	41%	49%	61%	55%	53%	55%	51%	44%	44%
				EMA	Rump	IMF			
EBV				+2.0	-0.2	-0.4			
Acc				33%	37%	33%			

COMMENTS: Heaviest cow in this group, at 868 kg weighed after photo taken. Big strong polled cow, medium framed, massive volume. Registered with Charolais Society. **A powerful Red Polled heifer born 26/12/24.**



LOT
89

LVH-FAIRFIELD
M189 (Dehorned)

TATTOO: LVH P359
DOB: 15/8/16

SIRE: PALGROVE DEBUT (AI) - PKD619E

DAM: BAROOLA PRINCESS 6 - NCFZ35B

MID PARENT EBVs									
	CE Dir	GL	BW	200	400	600	Milk	SS	Carc Wt
EBV	+0.1	-1.4	+0.6	+6	+14	+20	+6	+1.4	+14
				EMA	Rump	IMF			
EBV				+2.2	+0.6	-0.2			

COMMENTS: Lovely deep bodied, easy doing cow, very docile. **Calved with a beautiful red polled heifer only 2 days before photos taken on 8/1/25.**



LOT
90

LVH-FAIRFIELD
M353 (P/S)

TATTOO: LVH M353
DOB: 1/10/16

SIRE: FERVALE GOLFER (AI) (P) - FENG6E

DAM: LVH-FAIRFIELD PRINCESS G46 (P) - LVHG46C

MID PARENT EBVs										
	CE Dir	GL	BW	200	400	600	Milk	SS	Carc Wt	
EBV	+1.2	-3.0	+0.2	+10	+20	+23	+5	+1.5	+15	
			EMA	Rump	IMF					
EBV				+1.3	+0.6	+0.1				

COMMENTS: Outstanding cow, gentle temperament, long bodied, carcass, lovely udder and eye appeal. Calved the night before this photo taken with an outstanding Red Poll/scur bull calf born 12/1/25.



LOT
91

LVH-FAIRFIELD
M146 (P)

TATTOO: LVH M145
DOB: 1/9/16

SIRE: PALGROVE CELTIC (AI) (ET) (P) - PKC632E

DAM: FERVALE CHLOE - FENC64E

MID PARENT EBVs										
	CE Dir	GL	BW	200	400	600	Milk	SS	Carc Wt	
EBV	-0.7	-2.6	+1.6	+14	+25	+32	+4	+1.5	+20	
			EMA	Rump	IMF					
EBV				+2.5	+0.8	+0.1				

COMMENTS: Long bodied, great balance of carcass and finish, docile, outstanding bloodlines. Red polled bull calf born 9/1/25, just a couple days before photo taken, outstanding calf.



LOT
92

LVH-FAIRFIELD
M351 (Dehorned)

TATTOO: LVH M351
DOB: 21/2/16

SIRE: FERVALE EMBASSY (AI) (ET) - FENE46E

DAM: LVH-FAIRFIELD LILLY (P) - LVHE106E

MID PARENT EBVs										
	CE Dir	GL	BW	200	400	600	Milk	SS	Carc Wt	
EBV	-4.1	-1.1	+2.0	+14	+28	+39	+7	+1.1	+23	
			EMA	Rump	IMF					
EBV				+2.0	-0.1	+0.1				

COMMENTS: Deep square cow, massive volume, sound udder, docile, outstanding bloodlines again. A classy keeper heifer at foot born 26/12/24, red and Poll/scur.



LOT
93

LVH-FAIRFIELD
L51 (P)

TATTOO: LVH L51
DOB: 1/1/15

SIRE: FERVALE GOLFER (AI) (P) - FENG6E

DAM: LVH-FAIRFIELD PRINCESS G46 (P) - LVHG46C

MID PARENT EBVs									
CE Dir	GL	BW	200	400	600	Milk	SS	Carc Wt	
EBV	+1.9	-0.1	+0.9	+5	+8	+10	+4	+0.6	+8
			EMA	Rump	IMF				
EBV			+1.8	+0.3	+0.1				

COMMENTS: Very similar type to lot 91, Long bodied, great balance of carcass and finish, docile, outstanding bloodlines. **Will calve to Kowboy prior to sale.**



LOT
94

LVH-FAIRFIELD
L227 (P)

TATTOO: LVH L227
DOB: 5/12/15

SIRE: FERVALE FLIP (AI) (ET) (P) - FENF4E

DAM: LVH-FAIRFIELD VIOLET 3 (P) - LVHD66E

MID PARENT EBVs									
CE Dir	GL	BW	200	400	600	Milk	SS	Carc Wt	
EBV	-9.4	-0.9	+2.2	+14	+31	+44	+6	+1.3	+21
			EMA	Rump	IMF				
EBV			+0.5	+1.5	+0.6				

COMMENTS: Deep bodied easy doing cow, lovely nature, ideal balance of carcass and finish to produce quality bulls, as all these cows are. **Will calve prior to sale to Kowboy.**



LOT
95

LVH-FAIRFIELD
L301 (P/S)

TATTOO: LVH L301
DOB: 31/12/15

SIRE: LVH-FAIRFIELD ESSENCE (P) - LVHE35E

DAM: GREENWOOD RUBY X33 (AI) (ET) (P) - TSPX33E

MID PARENT EBVs									
CE Dir	GL	BW	200	400	600	Milk	SS	Carc Wt	
EBV	+2.5	-2.9	+0.2	+13	+22	+25	+5	+0.7	+16
			EMA	Rump	IMF				
EBV			+1.0	-1.1	-0.1				

COMMENTS: Another lovely big strong charolais cow, long bodied, good yielding carcass, fine haired, calved the day before picture was taken with a cream polled heifer calf by Kowboy.



LOT
96

LVH-FAIRFIELD
K12 (P)

TATTOO: LVH K12
DOB: 1/1/14

SIRE: MOONGOOL CASHMERE (P) - DP2C321E

DAM: FERVALE BLUE LILLY - FENB33E

MID PARENT EBVs									
CE Dir	GL	BW	200	400	600	Milk	SS	Carc Wt	
EBV	-6.7	-1.2	+1.8	+17	+29	+46	+8	+1.0	+26
			EMA	Rump	IMF				
EBV			+1.7	-0.6	-0.3				

COMMENTS: Powerful cow, growth, carcass and bone, perfect udder and teats, outstanding bloodlines, **on point of calving in photo Kowboy.**



LOT
97

LVH-FAIRFIELD
K163 (P)

TATTOO: LVH K163
DOB: 1/8/14

SIRE: MOONGOOL CASHMERE (P) - DP2C321E

DAM: FERVALE ABIGAIL - FENA2E

MID PARENT EBVs									
CE Dir	GL	BW	200	400	600	Milk	SS	Carc Wt	
EBV	-7.0	0.0	+1.5	+12	+17	+27	+4	+0.9	+16
			EMA	Rump	IMF				
EBV			+1.5	-0.2	-0.4				

COMMENTS: Quality cows with these genetics are very rarely available to buy, daughters of these cows will be the basis of cow families on your herd way into the future. **Red polled bull calf born 5/1/25.** 1 week old in photo.



LOT
98

LVH-FAIRFIELD
K26 (P/S)

TATTOO: LVH K26
DOB: 10/1/14

SIRE: PALGROVE DALLAS (AI) (P) - PKD288E

DAM: LVH-FAIRFIELD LOTTA (P) - LVHD84E

MID PARENT EBVs									
CE Dir	GL	BW	200	400	600	Milk	SS	Carc Wt	
EBV	-2.0	-2.1	+1.4	+12	+14	+20	-3	+0.6	+9
			EMA	Rump	IMF				
EBV			+0.8	+0.5	-0.3				

COMMENTS: Another great carcass cow. medium framed, fine coated with a **red, polled heifer calf born 26/12/24**



LOT
99

LVH-FAIRFIELD
SUSETTE J97E (P)

TATTOO: LVH J97E
DOB: 20/11/2013

PALGROVE VIAGRA (PK V92E) (P)
SIRE: PALGROVE ZILLMAN (PK Z108E) (P)
PALGROVE DESIRE 54 (PK W337F)

AYR SUMO'S EBOR (AYR W433F)
DAM: AYR EBOR'S SUSETTE (AYR Z137E)
AYR ELDON'S SUSETTE 2ND (AYR W159E)



December 2024 Australasian Charolais Single-Step BREEDPLAN

	CE Dir	GL	BW	200	400	600	Milk	SS	Carc Wt	EMA	Rump	IMF
EBV	+3.2	-0.5	+0.4	+2	+3	-3	+4	+0.1	+6	+2.9	+1.0	-0.2
Acc	45%	48%	70%	54%	56%	60%	45%	46%	48%	36%	41%	33%

COMMENTS: Classy matron cow, medium framed, positive fat cover, amazing udder and teats. Registered with Charolais Society.



A keeper Red polled heifer calf born 5/1/25.

LOT
100

LVH-FAIRFIELD
SUSETTE J97E (P)

TATTOO: LVH J97E
DOB: 20/11/2013

PALGROVE VIAGRA (PK V92E) (P)
SIRE: PALGROVE ZILLMAN (PK Z108E) (P)
PALGROVE DESIRE 54 (PK W337F)

AYR SUMO'S EBOR (AYR W433F)
DAM: AYR EBOR'S SUSETTE (AYR Z137E)
AYR ELDON'S SUSETTE 2ND (AYR W159E)



December 2024 Australasian Charolais Single-Step BREEDPLAN

	CE Dir	GL	BW	200	400	600	Milk	SS	Carc Wt	EMA	Rump	IMF
EBV	+3.2	-0.5	+0.4	+2	+3	-3	+4	+0.1	+6	+2.9	+1.0	-0.2
Acc	45%	48%	70%	54%	56%	60%	45%	46%	48%	36%	41%	33%

COMMENTS: Matron cow, that is so sound, excellent carcass traits French breeding from her dam, these two matrons would be a great start to a new stud herd. Registered with Charolais Society.



Red poll/scur bull calf bull calf born 30/12/24.

LOT
101

LVH-FAIRFIELD
J74 (P)

TATTOO: LVH J74
DOB: 12/8/13

SIRE: FERVALE EMBASSY (AI) (ET) - FENE46E

DAM: LVH-FAIRFIELD CARISSA - LVHC7E

MID PARENT EBVs									
	CE Dir	GL	BW	200	400	600	Milk	SS	Carc Wt
EBV	-4.7	-0.4	+2.3	+9	+14	+22	+4	+0.4	+10
			EMA	Rump	IMF				
EBV			+1.3	-0.2	+0.1				



COMMENTS: Class matron cow, very sound, the type you keep all your heifer's from to build your herd.
Red polled heifer calf born 23/12/24

LOT
102

LVH-FAIRFIELD
N106 (P/S)

TATTOO: LVH N106
DOB: 1/4/17

SIRE: LVH-FAIRFIELD GRANDE (P) - LVHG74E

DAM: GOBONGO CONFIDENCE D45E - GOD45E

MID PARENT EBVs									
	CE Dir	GL	BW	200	400	600	Milk	SS	Carc Wt
EBV	-1.9	-0.3	+1.7	+12	+21	+30	+7	+1.0	+18
			EMA	Rump	IMF				
EBV			+1.8	-0.1	-0.1				



COMMENTS: We have saved a great cow in her prime for our last lot, Soft easy doing polled cow, very docile, like all these cows excellent bloodlines. **Will calve prior to sale to Kowboy.**

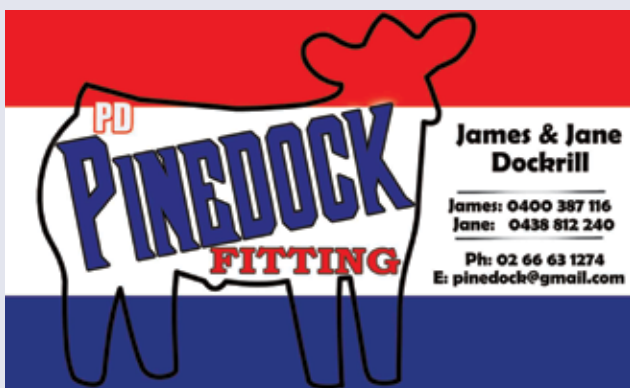
LOT
103

WITHDRAWN

LVH-FAIRFIELD
JACKER H3 (P)

TATTOO: LVH H3E
DOB: 23/01/2012

End of Sale. Thank you for your support.



The Dockrill family are an integral part of Glenlea Beef and provide a range of services, from feeding and showing our cattle, preparing bulls for our range of bull sales, marketing photos, clipping and video taking, production and editing. Additionally an increasing amount of private bulls directly from their Casino, NSW property.

All the rest of the Glenlea Beef team thank them for all their support, input and hard work without which Glenlea Beef could not operate in the way it does currently.

BUYERS INSTRUCTION SLIP

**Heart of the Herd
Charolais Female Sale**

February 2025



**Please email completed form to:
Sandra Wilson, Elders Stud Stock
E: sandra.wilson@elders.com.au**

Name: _____

Address: _____

_____ **PIC No:** _____

Email: _____

Phone: _____ **Mobile:** _____

Account To: _____

Lot No's Purchased: _____ **Total Number of Lots:** _____

Society registration transfer Required? Yes No **Society / Tattoo Prefix:** _____

Transport arrangements. Please give details:

Name of Carrier: _____ **Phone:** _____

Destination: _____

Insurance Required: _____

Other Instructions: _____

Agent Name and Contact: _____

Buyers Signature: _____ **Date:** _____ / _____ / _____

Verbal instructions will not be accepted

GLENLEA BEEF

The logo for Glenlea Beef is rendered in a vibrant red color. The word "GLENLEA" is written in a clean, uppercase, sans-serif font, while "BEEF" is in a similar font but with a slightly more condensed appearance. The letters are contained within a horizontal red outline that mimics the shape of a cow's head, complete with a snout on the left and a tail on the right. The tail is a simple, curved line that ends in a teardrop-shaped tuft.

GLENLEA BEEF Heart of the Herd Charolais Female Sale 2025



RBM Fargo (PP) USA imported sire, low BW, with above breed average growth and top 1% of breed Fat cover.
Sire of lots 5, 6 and 7.



Dam of Lot 14 and Donor Dam.



Maternal sister to Lot 3



Maternal sister to Lot 15 and Donor Dam.



Dam of Lot 6. Reserve champion Heifer at Beef 2021, top priced charolais female sold at auction in 2021 for \$26,500 and now Donor Dam.



Maternal sister to Lot 72
At 11 months sold for \$8,000, private sale.

GLENLEA BEEF Heart of the Herd Charolais Female Sale 2025



LOT 3



LOT 30



LOT 48



LOT 76



LOT 90



LOT 97