

[View this email in your browser](#)



News - March 2026



Seasonal change and how Botswana is beautiful for it!

There's a particular quality to Autumn in Botswana that seasoned travellers know well and first-timers never quite expect. The rains are easing, the skies are clearing to that impossible African blue, and the landscapes at both Feline Fields Vintage Camp on the Khwai River and Feline Fields Lodge in the Kalahari are gloriously, extravagantly alive.

This is a generous season. The bush is thick and lush, the birdlife is extraordinary, the light has a richness that photographers travel thousands of miles to find, and the busy buzz that peak season brings is still comfortably months away. If you've been on the fence about a Botswana safari, March and April are whispering something rather compelling in your ear.

At Feline Fields Vintage Camp, the Mbudi Channel is alive with activity, its floodplains filled with animals and the high waters that the exceptional summer rains brought are slowly receding! At Feline Fields Lodge, the Kalahari savannah has responded to the rains with a flush of green that has transformed its usual palette entirely, drawing wildlife to the waterhole and filling the acacia scrub with sound and movement.

Two very different landscapes. Both, right now, at their most vivid.

We hope this month's newsletter finds you well, and perhaps already dreaming of Botswana. Come and visit us soon!

The team @ Feline Fields!



The oldest knowledge in the Kalahari

There is a moment that almost every guest at Feline Fields Lodge describes in the same way, regardless of where they've come from or how many safaris they've been on. It's the moment they stop looking at the Kalahari and start actually seeing it and it happens, almost invariably, in the company of the Ju/'hoansi San.

The Ju/'hoansi are among the oldest continuous cultures on earth, their connection to the Kalahari stretching back tens of thousands of years through an unbroken thread of knowledge, observation and intimate relationship with this landscape. They did not simply live here. They learned to read every inch of it with a precision that has no parallel in the modern world.

At Feline Fields Lodge, guests have the rare and genuine privilege of spending time with the Ju/'hoansi, not as passive observers of a culture on display, but as participants in a living tradition. Walking in the Kalahari scrub alongside a San tracker, the landscape undergoes a quiet transformation. What appeared sparse and silent reveals itself as dense with information: a bent twig that marks an animal's passage; a scatter of seeds that indicates a feeding site hours old; a barely perceptible disturbance in the sand that carries species, direction and time as precisely as any written record.

The plants are medicine, food and tool. The sky is a map. The sand is a library. And the Ju/'hoansi, unhurried and generous in their teaching, share it all with a joy and warmth that is entirely disarming, as is their sense of fun and engaging laughter.

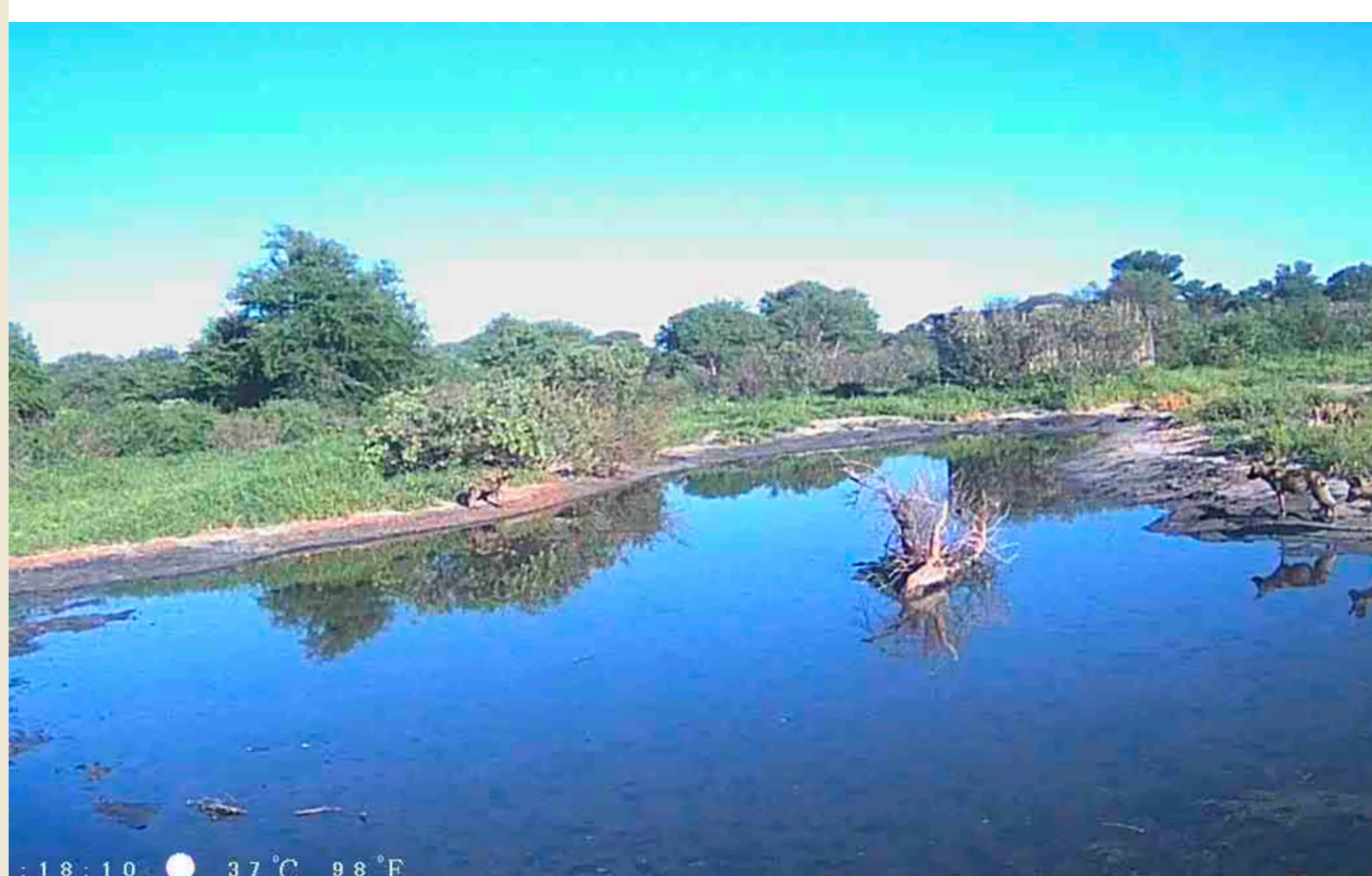
It's an experience that tends to reorder things. Guests leave Feline Fields Lodge carrying the usual safari memories but it's often the time spent with the San that stays longest, and goes deepest.

Some knowledge is very old indeed. At Feline Fields Lodge, we think it deserves to be passed on.



Chat to us at We Are Africa

If you're part of the travel industry and are attending We Are Africa in Cape Town from 4-9 May this year, then we'd love to meet with you and share everything that makes Feline Fields so special!



A wildlife destination of the future?

The imminent release of our four young giraffe from their holding boma into the open Kalahari system around Feline Fields Lodge has shone a light on something that has been quietly, steadily unfolding for some time now. The landscape surrounding Feline Fields Lodge is emerging as a genuine wildlife destination in its own right and the evidence, quite literally, is being captured on camera.

The trail cameras positioned around the Feline Fields Lodge waterhole have told a remarkable story in recent weeks. Brown hyena, one of the Kalahari's most secretive and seldom-seen nocturnal specialists, moving purposefully through the darkness on ancient, habitual routes. Leopard, confirming that this is exceptional leopard territory, active by both day and night. Elephant, drawn by the lure of permanent water in a landscape where water is precious, pausing at the waterhole with that particular, unhurried deliberateness that only elephants possess. And, most thrillingly of all, painted wolves (African wild dog) caught in the camera's eye at the water's edge giving us a fleeting but electrifying confirmation that one of Africa's most endangered predators is moving regularly through this landscape.

Each of these appearances tells a story that goes beyond a single sighting. It speaks to a landscape that is recovering, expanding and diversifying – one in which the presence of permanent water, responsible land management and a genuine commitment to wildlife restoration through the Feline Fields Trust is beginning to bear extraordinary fruit.

The giraffe reintroduction is, in many ways, the most visible expression of this commitment. But it's the trail camera footage that tells the fuller, richer story of what the Kalahari around Feline Fields Lodge is becoming.

Watch this space. It's going to be quite a story.



ENQUIRE NOW

Have you registered on our trade portal?

If not, please do! Our [trade portal](#) is where you need to be if you're a member of the travel trade, giving you access to our latest rates, packages, images and other important trade info. Register now or email us on sales@felinefields.com for assistance!

The social scene!

We're on Facebook and Instagram – come and find us for the latest images, stories and updates from both properties. Click the links below to like and follow us!



Why you are receiving this email

You are receiving this communication from us because you are either one of our existing valued trade partners, or we have had the pleasure of meeting you at a recent trade show or through a trade partner referral. We'd love to stay in touch with you, but if you would prefer not to receive further communications from us, please unsubscribe below.

GET IN TOUCH



© 2026 Feline Fields. All rights reserved.

Our mailing address is: sales@felinefields.com
Our website is: www.felinefields.com

Want to change how you receive these emails?
You can [update your preferences](#) or [unsubscribe](#)