



WILDERNESS LEGENDS

AFRICA



ITINERARY HIGHLIGHTS


February 9 - 21, 2026

Arusha National Park
Serengeti National Park
Ngorongoro Conservation Area
Elephant Cave Hike
Hadzabe Tribe
Tarangire National Park
Visit FCCT's work at KCMC



**Welcome to
Wilderness Legends!**





Itinerary synopsis and lodging

Day 01 Arrival - African View Lodge or Kahawa House

Day 02 Arusha NP - African View Lodge or Kahawa House

Day 03 Tarangire NP - tented camp

Day 04 Karatu Coffee Farm & Elephant Caves - Misitu/Kudu

Day 05 Karatu - Ngorongoro Crater - Misitu or Kudu

Day 06 Hadza/Datoga - Lake Eyasi Safari Lodge

Day 07 Game drive and Ndutu Safari Lodge

Day 08 Game drive and Ndutu Safari Lodge

Day 09 Serengeti game drive - tented camp

Day 10 Serengeti game drive - tented camp

Day 11 Flight to Arusha - Kilimanjaro Coffee Lodge

Day 12 Kilimanjaro Coffee Lodge

Day 13 FCCT Saturday visit plus onward flights

Arusha

Days 1-2

Karibu Tanzania!
Let the adventure begin!

Upon arrival at Kilimanjaro International Airport, you'll be met by your Wilderness Legends guide who will transfer you to your accommodation.



Your second day will be spent exploring beautiful Arusha National Park for the first game drive of your safari.

Zebras, giraffes, baboons, buffalo, colobus and blue monkeys, and many beautiful birds inhabit this lush sanctuary and stunning landscape. Around Momella Lake you may see hippos and flamingos. Beautiful crowned cranes live here, too, along with hundreds of other fascinating bird species.

Tarangire National Park

Day 3



Today we head to Tarangire National Park. This park is well known for its elephant families, which are often seen congregating by the river and finding shade under the baobab trees dotted throughout the park.



Giraffe are prolific throughout the park, and you may also see impala, bushbuck, eland, hartebeest, buffalo and more. These animals are closely followed by predators like lion, cheetah and leopard. There are also more breeding species of birds found in Tarangire National Park than anywhere else on the planet!



Karatu

Days 4-5



An additional game drive in Tarangire will be had as you work your way out of the park. While in transit to your next destination, enjoy a cultural stop at a Maasai Boma and a coffee farm.

Today's exploration will also take you to the Endoro River trail head. From here, hike to the Elephant Caves through lush Ngorongoro forest to see where the elephants dig for minerals. You will be escorted by a park guide who is knowledgeable in the flora and fauna of the forest. On your way back, divert to see the stunning cascade of the Endoro River waterfall. This is a moderate 2.5-3 hours walk, and hiking boots or sturdy shoes are recommended. Later in the afternoon check into your next lodge



Ngorongoro Crater



Today starts with an early departure as we work our way through the forest, to the Ngorongoro Crater. We'll descend to the crater floor, a breathtaking experience, and spend the morning in this incredibly stunning environment.



Considered to be the Garden of Eden of Africa, this dramatic caldera is inhabited by more than 25,000 resident animals. A unique ecosystem of grass steppe and acacia forest, it is inhabited by the Big Five (including the endangered black rhino!) as well as zebra, hippo, wildebeest, cheetah, and so much more.



Lake Eyasi Cultural Excursion

Day 6



This morning we head out to experience a morning visit and hunt with the Hadzabe, Tanzania's last hunter-gatherers. We'll learn about their ways of life and practice how to shoot a bow and arrow. We will also visit the Datoga tribe, considered to be the oldest tribe in Tanzania. Skillful craftsmen, you will get to watch them still using their centuries of fine blacksmithing abilities, creating bead work, brass bracelets, and necklaces, while also supplying arrowheads to the Hadzabe tribe.

Later in the afternoon relax at your lodge, enjoying their pool, or read a book and just enjoy the view from their beautiful veranda



Ndutu

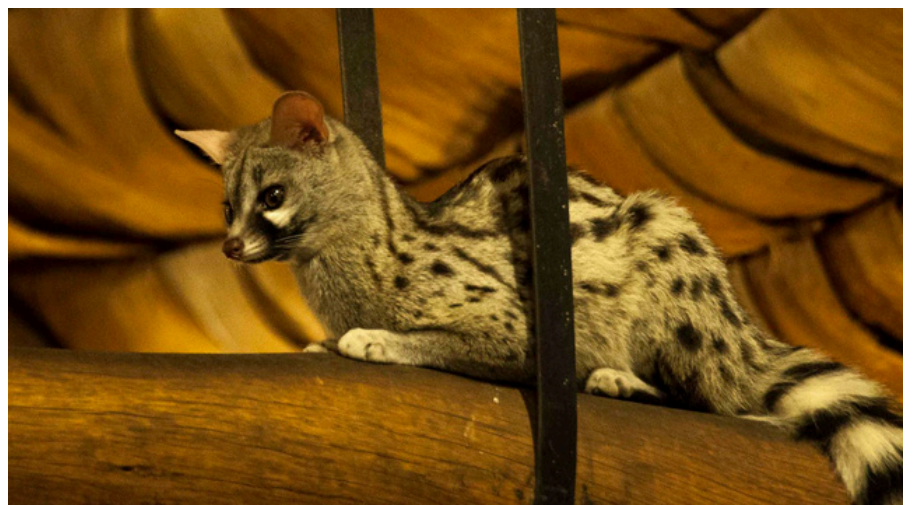
Days 7-8



Enjoy beautiful game drives in the Ndutu Area exploring a range of habitats. One of the prime game viewing spots is around Lake Ndutu, where enormous herds of wildebeest congregate between December and April to graze and calve.

The forests and granite kopjes around the lake are also home to a variety of wildlife outside of the migration months, making for prime game viewing throughout the year.

Enjoy sundowners around the campfire at this beautiful lodge, where the wildlife is often part of the view from your chairs!



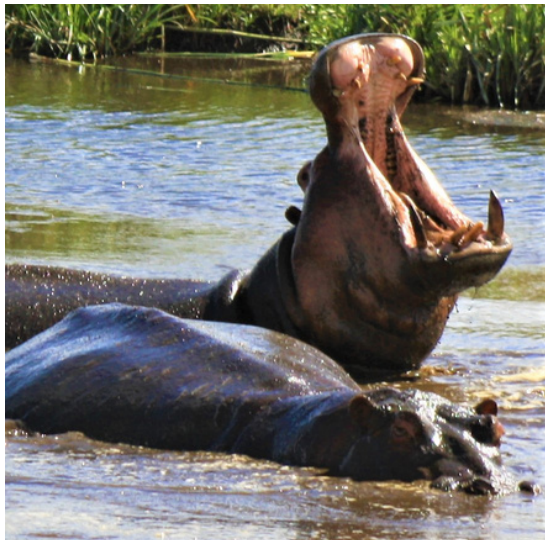
And by now you'll be acquainted with the resident genets who keep a watchful eye on your dinner from the rafters above - a very unique trademark of this special camp!

Serengeti

Days 9-10



Today you'll have a game drive while enroute to this iconic park from the Ndutu region. Several days in the Serengeti will then be spent viewing the beautiful wildlife, especially cat sightings and possibly some hunts.



Herds of wildebeest, zebra, many types of antelopes, elephant, hippos and crocs are just some of what you'll see while on your game drives, along with spectacular bird sightings.



Kilimanjaro Region

Days 11-13



After breakfast, you'll head to the Seronera Airstrip for your flight back to Arusha. Our drivers will pick you up and transport you to your next accommodation in the Kilimanjaro region.

Enjoy unwinding for the next few days at the Kilimanjaro Coffee Lodge, where you can take nature walks, have a coffee and tea farm tour, relax at their pool, or enjoy a bit of pampering at their spa - a wonderful few days to relax and reflect before your onward journey.

Our last day will include our annual visit to the Kilimanjaro Christian Medical Centre, with a special focus on the Cancer Care Centre. This will include a personal tour led by Dr. Furaha Serventi, Head of Oncology and the Centre's director. See first-hand the remarkable facilities and meet the wonderful staff who provide care for cancer patients. This tour will also include a special presentation on the progress of cancer care in northern Tanzania.



As this day concludes it will mark the end of your safari holiday with Wilderness Legends. Transport will be provided to the Kilimanjaro International Airport for you to connect with your onward journey.

We've enjoyed having you as our guests and appreciate you giving us the opportunity to show you our beautiful country.

Asante Sana Tena - thank you again, and we hope to see you on another safari!

Your Wilderness Legends Team



Safari Njema!

Welcome to your Tanzanian adventure!



YOUR TANZANIA ITINERARY

Your safari includes...

Accommodations on a full board basis, unless otherwise stated

Ground transfers as per itinerary, and airport transfers

Government fees (park, concession, and camping)

Your flight from the Serengeti to Arusha

Game drives in 4X4 Safari Landcruiser with a professional guide

Tea and coffee, plus drinking water while on game drives

Your safari excludes...

Gratuities for the guide and staff

Personal items

Visas, vaccinations, travel and personal insurance

International flight

Additional activities not mentioned

To Register:

Visit online at: <https://tanzaniacancercare.org>.

February 9-21, 2026

PRICE: USD\$ 6,900

(price includes a \$1,000 tax deductible donation)

Send a 25% deposit of \$1,725 per person (due June 20th, 2025)
to FCCT at:

5101 Vernon Ave. S., Suite 501, Edina, MN 55436 or
Call Hazel Reinhart at 952-913-2511

Payment Requirements

- A 25% deposit (\$) per person is required to guarantee the booking. Safari dates are in the “high season.”
 - Full payment is due 60 days prior to arrival.

Cancellation Policy

- 90-45 days before the scheduled arrival date: 20% of the tour price will be charged.
- 44-30 days before the scheduled arrival date: 50% of the tour price will be charged.
- 29 days or less before the scheduled arrival date: 100% of the total tour price will be charged.

•

Small Group Size—minimum of 10 people, maximum of 15 people