



IMPORTANT NOTICE

Rabies Vector Species (e.g. bat, raccoon, skunk, fox, coyote, bobcat, etc.):

- If you **touched** the animal
 - We recommend contacting your doctor right away
 - If pets were exposed, contact your veterinarian

Scan for more info on **Rabies**:



Animals may carry **Highly Pathogenic Avian Influenza (HPAI)**:

- HPAI has low risk to humans, but is contagious and deadly to wildlife and domestic animals. Read up on risks and ways to stay healthy and safe below:

Scan for more info on **HPAI**:



After handling or transporting any wild animal:

- **Disinfect any surfaces** or materials the animal touched, including carriers, towels, and your vehicle
- **Wash hands** thoroughly

WHO WE ARE



The Santa Barbara Wildlife Care Network (SBWCN) is a nonprofit volunteer based organization that rescues and rehabilitates sick, injured, orphaned, and/or oil-impaired birds, mammals and reptiles in Santa Barbara and Ventura Counties.

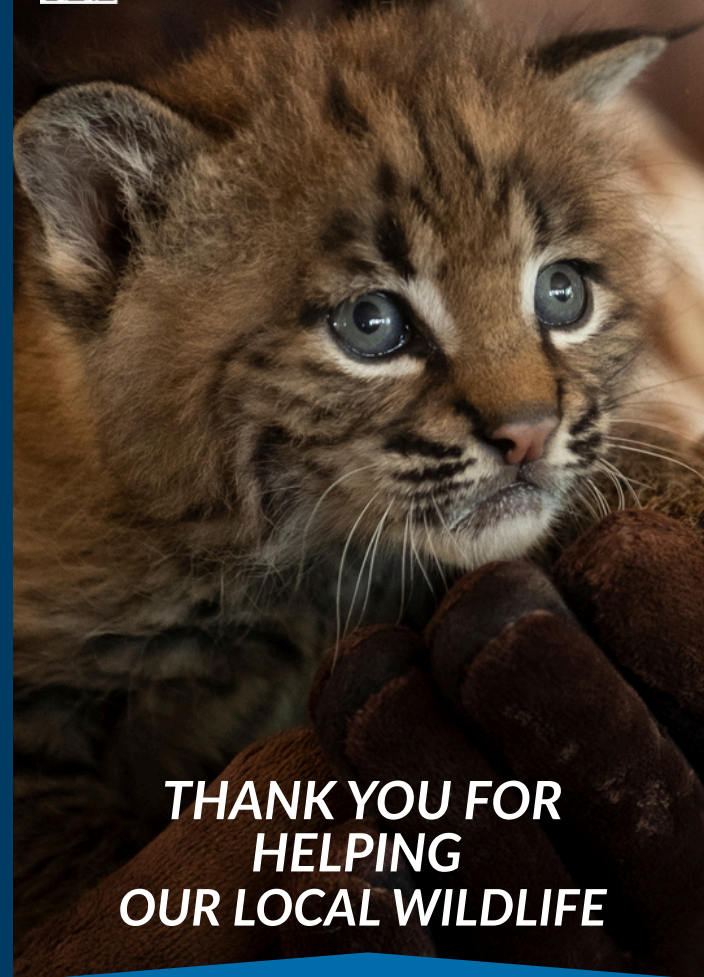
SBWCN is licensed by the United States Fish and Wildlife Service and the California Department of Fish and Wildlife.

Our education Portal, **Wild Welcome**, provides educational and free resources about learning to live in harmony with our wild neighbors.

Learn more about what we do with the websites below:

www.sbwcn.org

www.wildwelcome.com



**THANK YOU FOR
HELPING
OUR LOCAL WILDLIFE**

**WE ARE HERE
RESCUE HELPLINE: 805-681-1080**

AVAILABLE FOR WILDLIFE 365 DAYS A YEAR:
EMERGENCIES, RESCUES, ADVICE

1460 N. Fairview Ave.,
Goleta, CA 93117

YOU JUST BROUGHT IN AN ANIMAL... WHAT HAPPENS NEXT?

A step by step walkthrough of wildlife healing at SBWCN.



1. Staff will stabilize the animal in a **warm, dark, and quiet** area. The animal will have time to warm up & destress from being rescued and transported to us.

2. Once the animal is stable, staff perform an **Intake Exam** — checking weight, temperature, body condition, dehydration, and finding and treating any superficial injuries.



3. After the exam, the patient will have a treatment plan created for their specific needs, which may include:

Fluid therapy

Nutrition

Wound care

Surgeries

Medications

Enrichment

...and so much more!



4. Patients in care go through their treatment; recovering strength, confidence, and mobility for a safe release back to the wild. SBWCN staff carefully monitor and record their progress ensuring the process is as stress-free as possible.

MEDICAL SUPPORT AT SBWCN

Did you know? SBWCN has a full-time Veterinary Team on staff!

Patients receive advanced medical diagnostics and supportive care across a breadth of fields, including:

- Blood tests
 - and tests to screen for Lead and Rodenticide Toxicity
- Parasite screenings
- Ophthalmic exams
- Surgeries
- CT scans
- Radiographs
- Physical therapy
- Supportive care



Our state-of-the-art hospital and compassionate, knowledgeable staff provides critical rescue and care to 3,500+ wild animals per year with an average cost per patient of \$667, comprising over 200 different species.

You can help us in the work we do:

Donate here:



Santa Barbara Wildlife Care Network (SBWCN) is a 501(c)(3) nonprofit organization. TAX ID: 77-0201505 Your donation is tax-deductible as allowed by law.