

# Welcome to Good Shepherd Parish

February 15, 2026

6<sup>th</sup> Sunday in Ordinary Time



*The Sermon on the Mount* by Carl Bloch

Jesus said to his disciples:  
"I tell you, unless your righteousness surpasses  
that of the scribes and Pharisees,  
you will not enter the kingdom of heaven." Matthew 5:20

**Parish Office: (508) 650—3545****99 Main Street, Wayland, MA****GOOD SHEPHERD PARISH VISION STATEMENT**

Good Shepherd Parish strives to be a vibrant, welcoming community where every person can experience the Father's love. Through the Gospel proclamation, prayer, and joyous sacramental celebration, Good Shepherd Parish will inspire parishioners to discern and live out their vocations and to actively evangelize the world. As we bear witness to the Risen Christ, Our Lord and Savior, we aspire to serve our parish community. We will seek to welcome home the new, the lost, and the disheartened by using the gifts and fruits of the Holy Spirit.

**GOOD SHEPHERD PARISH MISSION STATEMENT**

We, the Roman Catholic community of Good Shepherd Parish, strive to be a living sign of Christ's love in and for the world. In response to our Baptismal call, nourished by the Eucharist and guided by the values of the Second Vatican Council, we seek to continue the mission of Jesus Christ by welcoming, supporting and guiding all through prayer, sacramental celebration, service and education.

**PARISH STAFF**

**Pastor:**  
Fr. Laurence "Ren" Tocci  
Ext. 14  
frren@goodshepherdwayland.org

**Senior Priest in Residence:**  
Rev. Austin H. Fleming, M.A.  
fraustin@goodshepherdwayland.org  
Fr. Fleming's daily blog:  
ConcordPastor.blogspot.com

**Permanent Deacon:**  
Deacon Colm McGarry Ext. 22  
Director of Youth Ministry  
cmcgarry@goodshepherdwayland.org  
youthministrywayland@gmail.com

**Finance & Operations Manager :**  
Liliana Lucas Ext. 18  
llucas@goodshepherdwayland.org

**Faith Formation Director (K-5):**  
Debora S. Robertson Ext.12  
dspairani@goodshepherdwayland.org

**Music Director**  
Bethany Ratcliff Ext. 33  
musicdirector@goodshepherdwayland.org

**Director of My Brother's Table:**  
Laurie Hojlo  
happyhojlos@verizon.net

**Communications & Sacramental Records:**  
Kat Holmstrom Ext. 13  
kholmstrom@goodshepherdwayland.org

**Administrative Assistant:**  
Vina Sousa Ext. 10  
vsousa@goodshepherdwayland.org

**Facilities Staff:**  
Steve McCarthy & Julio Pazmino Ext. 18

**Parish Office Hours:**  
Monday—Thursday  
9 AM—3 PM  
Friday 9 AM—12 PM



ST. ANN CHURCH, 134 COCHITUATE RD, WAYLAND, MA



ST. ZEPHERIN CHURCH, 99 MAIN ST, WAYLAND, MA

**Mass Times**

**Saturday, 4:00 PM St. Ann**  
**Sunday, 8:30 AM St. Zepherin**  
**Sunday, 10:30 AM St. Ann**  
**Sunday, 5:30 PM St. Zepherin**

**Confession**

**Saturday, 3:00 –3:45 PM**  
**St. Ann**  
(or by appointment)

**Weekday Masses**

**Monday—Tuesday**  
**9:00 AM St. Ann**  
**Wednesday—Friday**  
**9:00 AM St. Zepherin**

**Mass Intentions**  
**SATURDAY, FEBRUARY 14****4:00 PM****CHERYL KANE &  
RICHARD KANE, JR.****SUNDAY, FEBRUARY 15****10:30 AM****ERIC PIHL****5:30 PM****PEOPLE OF****GOOD SHEPHERD PARISH**  
**MONDAY, FEBRUARY 16****9:00 AM****BRIAN O'HARA****TUESDAY, FEBRUARY 17****9:00 AM****MILLIE CHOINSKI &  
RUTH (CHOINSKI) FORNES****ASH WEDNESDAY, FEBRUARY 18****THURSDAY, FEBRUARY 19****9:00 AM****GRETta ROZZARIO****Parish Calendar****MONDAY, FEBRUARY 16****PARISH OFFICE &  
ST. ZEPHERIN CAMPUS CLOSED  
PRESIDENTS' DAY****TUESDAY, FEBRUARY 17****BIBLE STUDY WITH PHEME****10:00 AM****PARISH CENTER****ASH WEDNESDAY, FEBRUARY 18****9:00 AM ST ZEPHERIN****MASS & ASHES****5:30 PM ST ZEPHERIN****SERVICE & ASHES****7:00 PM ST ANN****MASS & ASHES****FRIDAY, FEBRUARY 20**  
**STATIONS OF THE CROSS****7:00 PM—8:00 PM****ST. ANN**



## *The Evangelical Counsels and the Beatitudes (Conclusion) . . .*

The Church is a contrast culture. She exists to bring people into communion with God, through Christ; and then, animated by this communion, to enter into communion with all people. As such, she strikes a curious figure in the world. Every Christian should be a somewhat peculiar presence in any situation (s)he finds him-/herself in. Each disciple of Christ bears the mystery of His life within oneself, and so should present something of that mystery to others. Those Christians who've elected to live a life according to the evangelical counsels present this mystery more conspicuously. Theirs is among the few truly radical lifestyles. When we glimpse them in the world around us, they serve as immediate reminders of the ultimate transcendent destiny that is held out to each person: the transcendent life of the Kingdom of God. Even Christians living out their vocation in the work-a-day world, when they encounter someone living out the counsels, are jarred into remembering that their call is to be holy.

Those called to live out the evangelical counsels demonstrate what's known as heroic virtue: a level of virtue that goes over and above the ordinary measure of fortitude, justice, temperance, and prudence. Their vocation is a call received from God but that they themselves truly respond to, freely, with generosity, courage, and love.

In a dominant culture increasingly characterized by egotism, vanity, gratification, and the volatility of visceral passions, the evangelical counsels pave a path of steadfastness and inner peace. A purposeful detachment from material comforts, the regulation and sublimation of sexual energies, and the humble acceptance of a trusting and faithful obedience all point to a more focused way of life, a way of life aimed at the highest good and ordered toward that good.

The consecrated life, shaped by the evangelical counsels, is a life marked by self-discipline and self-control. Rather than living for the moment or simply for pleasure, the one committed to the counsels harnesses his/her natural passions to concentrate them on the pursuit of that which has ultimate meaning. It's not that they do not experience the normal passions of the human condition; but they apply their mind and their will to control those passions rather than allowing those passions to control them.

It's a life of sacrifice. But like all authentic sacrifice it's

placing short-term desires beneath long-term aspirations. As such, the life of sacrifice becomes a life of integrity, meaning, and purpose. Everything is ordered to the supreme end, that highest good. In this way, it's the life of true freedom: the freedom to choose a life that has continuity, direction, and impact; and to navigate the course of one's life ever toward that goal.

Now, it's not only those select few who've chosen the evangelical counsels who live such a life of rich meaning. All people—and in a particular way, people of faith—are summoned to a life of this kind, in one form or another. It's built into the human soul to hunger after meaning and purpose, to place one's life on a track toward some transcendent connection with what lies beyond and above oneself. The believer—whether living in religious life or in the world at large—recognizes this connection to be a close relationship with the living and personal God.

Each soul in some measure contains the blessedness described in the Beatitude, *Blessed are those who hunger and thirst for righteousness*. This driving want for what, in biblical language, is expressed as righteousness, is nothing less than the soul's quest for communion with God. (Throughout the Scriptures, both in the Old and New Testaments, "righteousness" is used to speak of being in right relationship with God.)

Not everyone is called to live the evangelical counsels. In the gospels, we encounter people who ask to accompany Jesus but whom He tells to return to their home; and He expressly states that celibacy is only for those to whom it has been given. But every Christian is summoned to live a life of sacrifice in one fashion or another, according to one's particular vocation. We're all charged with the pursuit of holiness: to self-discipline, self-control, and ever-increasing progress toward resemblance to our Lord. Those whose vocation entails the embracing of the evangelical counsels remind us, in a startling and undeniable way, of this fact: all of God's children are meant to be holy. Everyone who accepts their state-in-life as this vocation to holiness, and lives a life directed toward this purpose as best they can, hungers and thirsts for righteousness. And as Christ promises in the Sermon on the Mount, they will be satisfied.

~ Fr. Ren



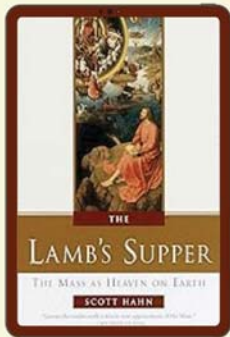
## EMMAUS READERS

Deepening our faith, one book at a time

CLICK LINK IN  
WEEKLY EMAIL!

THERE ARE A  
FEW BOOKS  
AVAILABLE FOR  
PURCHASE

### JOIN OUR ADULT BOOK GROUP



A 6 week session focusing on  
fellowship, prayer,  
and enriching discussion.

When: Wednesdays 7- 8pm

Beginning Feb. 25 for our

Lenten Read

Where: St. Ann's Church library

LINK TO REGISTER ON  
WEBSITE!

## The Ash Wednesday Penitential Prayer

Lord, as we begin this season of Lent, we come before You with humble hearts, seeking forgiveness for our sins. We accept You, Lord Jesus, as our Lord and Savior, and ask for Your guidance and strength. Cleanse us from all unrighteousness, and help us grow closer to You through prayer, fasting, and penance. May this Ash Wednesday mark the start of our journey toward renewal and deeper faith. Amen.



## HAPPY PRESIDENTS' DAY

FRIDAY, FEBRUARY 13TH

NO 9 AM MASS  
TODAY

MONDAY, FEBRUARY 16TH

9 AM MASS @ ST. ANN  
WILL BE HELD

PARISH OFFICE & ST. ZEPHERIN CAMPUS  
WILL BE CLOSED  
IN OBSERVANCE

Please Pray for the Repose of the Soul of

**George "Kim" Kincaid**

Whose funeral Mass was recently celebrated at our parish



*"Eternal rest grant unto them, O Lord,  
and let perpetual light shine upon them"*

*The Requiem Prayer*



**TO PRAISE,  
BLESS,  
PREACH**



LAY FRATERNITIES of SAINT DOMINIC  
PROVINCE OF SAINT JOSEPH, EASTERN USA  
Have you met the Lay Dominicans?  
[www.laydominicans.org](http://www.laydominicans.org)

Monthly meetings normally take  
place on the 3rd Sunday of the  
month in St. Ann's Hall  
and are open to visitors at any time.  
Next meeting: February 15, 2026

It is helpful if you do notify the group  
in advance  
if you will be attending.  
Direct inquiries to:  
Visit [boston3op.com](http://boston3op.com) for information  
or email

Mrs. Mikayla Dalton, O.P.  
(fraternity president) at  
[mikayla.v.dalton@gmail.com](mailto:mikayla.v.dalton@gmail.com).



*Prayer Requests*



+St. Martin  
de Porres,  
pray for us!+

**GOOD SHEPHERD PARISH**

**PRAYER LINE:**

**GSPPRAYERS@GMAIL.COM**

OR CALL THE NEW LINE  
TO LEAVE A MESSAGE:  
(508) 650 - 3545 EXT. 11

## READINGS, SAINTS, OBSERVANCES 2026

<b>SUNDAY</b> Feb 15	<b>6th Sunday in Ordinary Time</b> Sir 15:15-20/Ps 119:1-2, 4-5, 17-18, 33-34/1 Cor 2:6-10/Mt 5:17-37 or 5:20-22a, 27-28, 33-34a, 37
<b>MONDAY</b> Feb 16	<b>Presidents' Day</b> Jas 1:1-11/Ps 119:67, 68, 71, 72, 75, 76/Mk 8:11-13
<b>TUESDAY</b> Feb 17	<b>The Seven Holy Founders of the Servite Order</b> Jas 1:12-18/Ps 94:12-13a, 14-15, 18-19/Mk 8:14-21
<b>WEDNESDAY</b> Feb 18	<b>Ash Wednesday</b> Jl 2:12-18/Ps 51:3-4, 5-6ab, 12-13, 14+17/2 Cor 5:20-6:2/Mt 6:1-6, 16-18
<b>THURSDAY</b> Feb 19	Dt 30:15-20/Ps 1:1-2, 3, 4 and 6/Lk 9:22-25
<b>FRIDAY</b> Feb 20	Is 58:1-9a/Ps 51:3-4, 5-6ab, 18-19/Mt 9:14-15
<b>SATURDAY</b> Feb 21	<b>Saint Peter Damian, Bishop and Doctor of the Church</b> Is 58:9b-14/Ps 86:1-2, 3-4, 5-6/Lk 5:27-32
<b>SUNDAY</b> Feb 22	<b>1st Sunday of Lent</b> Gn 2:7-9; 3:1-7/Ps 51:3-4, 5-6, 12-13, 17/Rom 5:12-19 or 5:12, 17-19/Mt 4:1-11

Pilot Bulletins



## ASH WEDNESDAY SERVICES

**FEBRUARY 18, 2026**

9 A.M. St. Zepherin Church

Mass & Ashes

5:30 P.M. St. Zepherin Church

Children's Liturgy of the Word &

Distribution of Ashes

7 P.M. St. Ann Church

Mass & Ashes

## DAILY MASS SCHEDULE



**MONDAY AND TUESDAY**

**9 AM @ ST. ANN**

**WEDNESDAY, THURSDAY, FRIDAY**

**9 AM @ ST. ZEPHERIN**

(for holiday schedules: check our website & bulletin!)

## *The Son of Man Came to Seek and Save What Was Lost*

More and more young adults are looking for meaning and stability in their life, but sadly aren't sure where to go to find it. The richness of beauty and truth of our Catholic Faith has been a source of strength and purpose for countless people. Our young people deserve to have us share it with them.

*What can we do?*

- **Pray the Rosary, the Chaplet of Divine Mercy, or make a Holy Hour for them**
- **Offer small sacrifices (fast from dessert, or meat, or TV) and offer it for their return**
- **Invite a young person to reach out to Father Ren for a friendly, open conversation. Sometimes a simple chat can plant the seeds of grace.**  
([frren@goodshepherdwayland.org](mailto:frren@goodshepherdwayland.org); 508.650.3545, ext. 14)

Let's unite in faith and hope, trusting that God hears our prayers and will touch the hearts of those who have wandered.



*"Rejoice with me; I have found my lost sheep." — Luke 15:6*



## LETTER OF THE LAW

A kids' menu with limited choices simplifies taking them out to eat. But some adults have such detailed dietary peculiarities that on-line investigation is necessary before even inviting them. When Jesus says, "*unless your righteousness surpasses that of the scribes and Pharisees, you will not enter the kingdom of heaven*," (Matt 5:20), it sounds as though the task is negotiating a mega-menu of choices. But that assumes that Jesus' picture of a greater righteousness was expanding the legal code. After all Jesus confirms that the letters of God's Torah will last as long as the heavens and earth.

Unlike the legal scholars, Jesus adopts the Jewish wisdom traditions of proverbs and parables. Today's first reading (Sirach 15:5-20) begins, "*if you choose you can keep the commandments...*" Everyone has the kids' menu, good/evil, life/death. No excuses for acting unjustly. Jesus then runs through a basic list that everyone certainly knew: against murder, adultery, swearing false oaths, and giving a proper bill of divorce (Matt 5:21-37). Rather than asking "well, was that perjury or just confusion", drop evasion. Speak directly. Adultery starts much earlier, the habits of on-line gazing. And with some sarcasm, don't blame an eye or hand. In emergencies, either can be amputated. So, isn't hell an emergency?

Murder provides Jesus' most dramatic scenario because tracing back each of those prior causes is coupled with a higher level of judgment though the behavior is less aggressive (anger, "Raqa" [Aramaic insult], "you idiot"). Jesus does not assume perfection. Instead, remembering that someone has something against you, be reconciled. Similarly, find a way to settle with the opponent before winding up in court with its uncertain outcomes. Torah provides a framework for choosing the good, not for controlled combat. That "choose life, not death" binary does not include the friend/enemy division, since "love your enemies, do good to those who hate you" reflects God's perfection (Matt 5:48).

Pheme Perkins, Ph.D.  
Joseph Professor  
Of Catholic Spirituality  
Boston College



"he said to Peter, "So, could you not stay awake with me one hour?" Matthew 26: 40

## HOLY HOUR

"The only time our Lord asked the Apostles for anything was the night He went into agony. Not for activity did He plead but for an Hour of companionship."

-Ven. Archbishop  
Fulton Sheen




**February 26th at St. Ann**

**COME SPEND AN HOUR WITH JESUS**

**Adoration of the Blessed Sacrament**

Every 2nd Thursday at St Zepherin ~ 7:00-8:00 PM

Every 4th Thursday at St Ann ~ 7:00-8:00 PM



## Readings To-Go!

6th Sunday in Ordinary Time  
February 15, 2026

---

Scan QR code to see this week's readings!

### In the event of inclement weather:

When the local schools are closed during the week, so are we. There will be no daily Mass. The following stations provide closing and delay information on-screen as well as on-line.

The on-line links are:

Channel 4 (WBZ)

<http://boston.cbslocal.com/closings/>

Channel 5 (WCVB)

[www.wcvb.com/weather/closings](http://www.wcvb.com/weather/closings)

Channel 7 (NBC) & Channel 56 (CW)

<http://whdh.com/storm-closings-delays/>

Channel 10 (NBC Boston)

<http://www.nbcboston.com/weather/school-closings/>

Fox 25 (WFXT)

<http://www.fox25boston.com/weather/schoolclosings>

**GOOD SHEPHERD  
PARISH**

# UPCOMING EVENTS

**LENT**

**FEB. 20, 27,  
MARCH 6, 13, 20, 27**

**STATIONS  
OF THE  
CROSS**

Fridays during  
Lent - St. Ann  
7 PM

**MARCH 2-4**

**PARISH  
LENTEN  
MISSION**

Fr. Paul Sullivan,  
the Asst. Spiritual Director  
at St. John's Seminary  
will lead our mission!  
Mon & Tues 7 PM at St. Zepherin  
Wed 7 PM at St. Ann

**MARCH 13**

**FISH FRY**

Prior to the Stations,  
this Friday our combined  
ministries will serve  
an appropriate Friday meal

**MARCH 4**

**PARISH  
PENANCE  
SERVICE**

Prepare for Holy Week  
by receiving the  
sacrament of  
reconciliation on the  
final night of our  
mission!

**For event  
details,  
please visit:**

**[WWW.GOODSHEPHERDWAYLAND.ORG](http://WWW.GOODSHEPHERDWAYLAND.ORG)**



## GLORIA

Glo-ry! Glo-ry to God in the high-est. Glo-ry!

Glo-ry to God in the high-est, and on earth peace to peo-ple of good will.

We praise you, we bless you, we a-dore you, we glo-ri-fy you, we give you thanks for your great glo - ry,

Lord God, heav-en-ly King, O God, al - might-y Fa - ther. Lord Je-sus Christ, On-ly Be - got - ten Son,

Lord God, Lamb of God, Son of the Fa - ther, you take a - way the sins of the world, have mer-cy on us; you take a - way the sins of the world, re-ceive our prayer; you are seat-ed at the right hand of the Fa-ther, have mer-cy on us. For

you a-lone are the Ho-ly One, you a-lone are the Lord, you a-lone are the Most High, Je - sus Christ, with the Ho - ly Spir-it, in the glo-ry of God the Fa - ther. Glo-ry!

Glo-ry to God in the high-est. Glo-ry! Glo-ry to God in the high-est, and on earth peace to peo-ple of good will. A - men.

Text © 2010, ICEL

Ed Bolduc  
Music © 2011, WLP

## GOSPEL ACCLAMATION

Al-le-lu - ia, al-le-lu - ia, al-le-lu - ia.

Al-le-lu - ia, al-le-lu - ia, al-le-lu - ia.

Music: Mass of Saint Ann, Ed Bolduc, © 2011, World Library Publications, a division of GIA Publications, Inc.

## HOLY, HOLY, HOLY

Ho-ly, Ho-ly, Ho - ly Lord God of hosts.

Heav-en and earth are full of your glo-ry. Ho -

san - na in the high-est. Bless-ed is he who

comes in the name of the Lord. Ho - san-na, ho -

san - na in the high-est. Ho - san-na, ho -

san - na in the high - est.

Text: ICEL, © 2010

Music: Mass of Saint Ann, Ed Bolduc, © 2011, World Library Publications, a division of GIA Publications, Inc.

## MEMORIAL ACCLAMATION B

When we eat this Bread and drink this Cup,

we pro-claim your Death, O Lord, un-til you come a -

gain, un - til you come a - gain.

Text: ICEL, © 2010

Music: Mass of Saint Ann, Ed Bolduc, © 2011, World Library Publications, a division of GIA Publications, Inc.

## AMEN

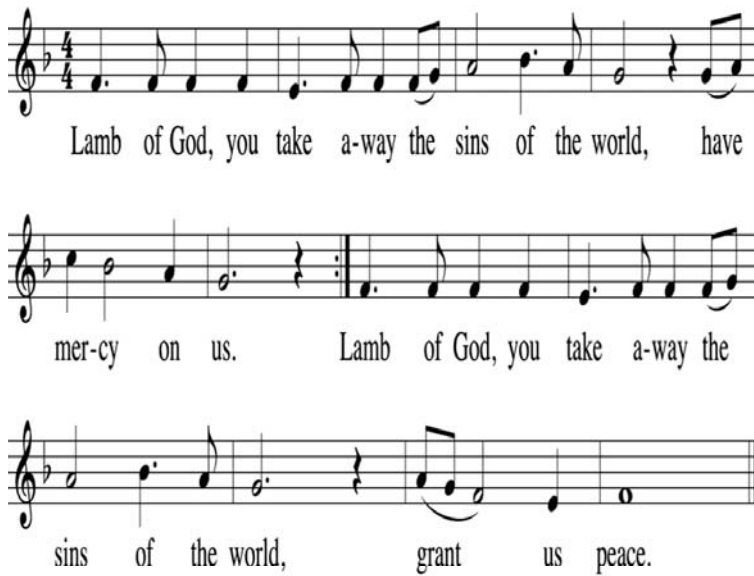
A - men, a - men, a - men.

A - men, a - men, a - men.

Music: Mass of Saint Ann, Ed Bolduc, © 1992, 2011, World Library Publications, a division of GIA Publications, Inc.



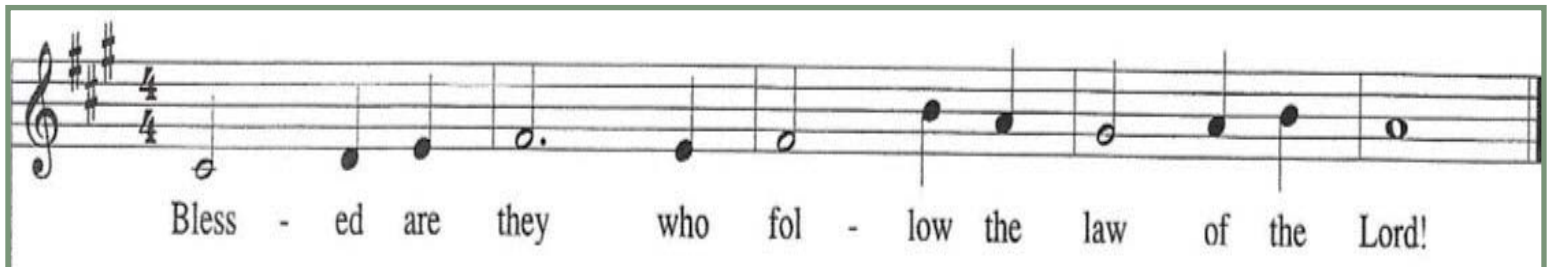
## LAMB OF GOD



Music: *Mass of Saint Ann*, Ed Bolduc, © 1992, 2011, World Library Publications, a division of GIA Publications, Inc.

## Blessed are They Who Follow the Law of the Lord

1. Blessed are they whose way is blameless, who walk in the law of the Lord. Blessed are they who observe His decrees, who see Him with all their heart.
2. You have commanded that your precepts be diligently kept. Oh, that I might be firm in the way of keeping your statutes.
3. Be good to your servant, that I may live and keep your words. Open my eyes that I may consider the wonders of your law.
4. Instruct me, O Lord, in the way of your statutes, that I may exactly observe them. Give me discernment that I may observe your law and keep it with all my heart.



AN ILLUSTRATED GUIDE TO  
**LENTEN FASTING  
& ABSTINENCE**  
PRESENTED BY JONATHAN TEIXEIRA FOR THE FOCUS BLOG



**WHEN**  
**FASTING  
AND  
ABSTINENCE**

**ABSTINENCE**

**WHO**



**CATHOLICS**  
**14+**  
ARE OBLIGED TO  
PRACTICE ABSTINENCE



**CATHOLICS**  
**18-59**  
ARE OBLIGED  
TO FAST



**THOSE OUTSIDE THE AGE LIMITS**

and those whose state in life (e.g. pregnant women, manual laborers, those who are ill) may be excused from the requirements of fasting and abstinence, but are encouraged to take up some other form of penitence or acts of charity or piety.

## Better Shelves. Custom Solutions.

Say goodbye to clutter and frustration—wherever it lives. From kitchens and pantries to bathrooms and laundry rooms, **ShelfGenie® custom pull-out shelves** bring smart, accessible storage to every space in your home.

FREE EXPERT  
DESIGN CONSULTATION

A **\$250** VALUE

**ShelfGenie®**  
EVERYTHING WITHIN REACH®  
a **neighborly** company



**Schedule Now by Calling**  
**1-855-625-9032**

© 2025 ShelfGenie SPC LLC. All rights reserved. Locally owned and operated franchise. Offer valid at participating locations only. Limit one offer per household. \*Applies to Classic and Designer line. EXP 1/31/2026. MA HIC License #165040

**Jacuzzi®**

Bath  
Remodel

**Safety. Style.  
Stress-Free  
Installation.**

**CALL NOW**  
**1.833.791.9968**

**SPECIAL OFFER**

**Waiving All  
Installation  
Costs!**

Add'l terms apply. Offer subject to change and vary by dealer. Expires 12/27/26.



**Start the new  
year clog-free!**

**LeafFilter®**  
GUTTER  
PROTECTION

Get a **FREE** full gutter inspection  
and estimate: **1-844-320-4506**

Claim by: 2/28/2026

**15% OFF + 10%**  
**LeafFilter®**

**Discount For  
Seniors + Military**

We install year-round!

Get a **FREE** full gutter inspection and estimate:  
**1-844-320-4506 Promo: 285**

\*\*Promotional offer includes 15% off plus an additional 10% off for qualified veterans and/or seniors. One coupon per household. No obligation estimate valid for 1 year. See Representative for full warranty details.  
AZ ROC344027 AR 366920925 CA1035795 CT HIC0671520 DC 420223000087 FL CBC056678 ID ROC-51604 IA C127230 LA 559544 MD MHIC11225MA 213292 MI 262300331 262300330 262300329 262300328 262300318 262300173 MN IR810524 MT 266192 NE 50145-24 NV 86990 NJ 13VH13285000 NM 408693 ND 47304 OR 218294 PA PA179643 RI GC-41354 TN 10981 UT 10783658-5501 VT 174,0000871 VA 2705169445 WA LEAFLH763PG WV WV056912  
\*The leading consumer reporting agency conducted a 16 month outdoor test of gutter guards in 2010 and recognized LeafFilter as the #1 rated professionally installed gutter guard system in America.

*"He has risen." Matt 28:6*

**THE CATHOLIC SCHOOLS  
FOUNDATION**  
We Change Lives.

*gala*

36th Annual Building  
Minds Scholarship Fund  
Gala **Honoring Travis  
and Rachel Rhodes!**  
Help change the lives of  
4,300 in-need students  
through the power of a  
Catholic education!



**APRIL 16<sup>TH</sup> 2026**

Scan the QR Code to RSVP





**\$349.99**

TEETH  
WHITENING  
VALUED AT \$880

&

**FREE**

COMPREHENSIVE  
CONSULTATION—  
VALUED AT  
OVER \$1200

Mention this advertisement for the discount.

**Barry Bessler, DMD • 508-358-2336**

Visit our website: [www.besslerkang.com](http://www.besslerkang.com)  
30 Boston Post Rd., Wayland

**COSMETIC & GENERAL DENTISTRY | SMILE MAKEOVERS  
FULL MOUTH RECONSTRUCTION & MORE**

**BESSLER & KANG, DMD** REVIEWS:  
PROSTHODONTISTS  



**JUNK REMOVAL & DEMOLITION 617-893-9824**

Steven Conroy - Owner

[www.lugaway.com](http://www.lugaway.com) | [info@lugaway.com](mailto:info@lugaway.com)

Home Cleanouts  
Garage Cleanouts  
Office Cleanouts  
Storage Unit Cleanouts  
Estate Cleanouts  
Furniture  
Appliances  
Televisions  
Yard Waste  
Construction Debris  
Demolition

Draw  
Close  
to  
Jesus

40 Encounters  
with the Savior  
for the Sacred  
Season of Lent

Heidi Chiavaroli

*Draw Close to Jesus*

Award-winning novelist  
Heidi Chiavaroli invites you  
to draw closer to Jesus this  
Lent. Through imaginative  
retellings, Heidi brings to vivid  
life the stories of forty people  
who encountered the Savior  
in the pages of Scripture.

Now Available



[www.heidichiavaroli.com](http://www.heidichiavaroli.com)

**AD SPACE  
AVAILABLE**  
617-779-3771

All families are

**Born to Thrive**

Innovation in childcare



Providing top-notch childcare, private coaching,  
and premium products for your children.

**857-200-8309 | [www.btthrive.com](http://www.btthrive.com)**

**CONNELL**

ROOFING • SIDING • GUTTERS



**ROOFING | SIDING | GUTTERS | WINDOWS & DOORS**

**Servicing Metro-West Boston & Cape Cod, Massachusetts**

Connell Roofing, based in Wrentham, MA, has been providing top-tier roofing services to both residential and commercial property owners for over 60 years. Their commitment to quality, integrity, and customer satisfaction has established them as a leading roofing company in Massachusetts.

**REQUEST ESTIMATE: 781-444-7577**

[www.connellroofing.com](http://www.connellroofing.com)

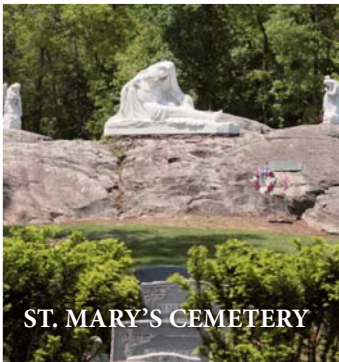
**Catholic Appeal**  
BOSTON

*Together we are*  
**One**  
ARCHDIOCESE OF BOSTON | CATHOLIC APPEAL

Your support of the 2026 Catholic Appeal will have a  
meaningful impact on our parishes, schools, and ministries  
that serve so many throughout our Archdiocese of Boston.

**Please Support Our Mission!**

**Scan the QR code  
& Give Today!**



St Mary's Cemetery in Needham, founded in the 1870's, is the parish cemetery of Mary Immaculate of Lourdes. The Cemetery is a reverent resting place for those awaiting reunion with the Risen Lord. The decision to pre-plan and purchase interment rights is a responsible and thoughtful gesture, sparing loved ones the stress of making difficult decisions during a time of grief and loss.

For information, call the cemetery staff at Mary Immaculate of Lourdes Church at **781-235-1841**.  
St. Mary's Cemetery | 1 Wellesley Avenue,  
Needham, MA 02494

**EST. 1949**  
**CAMP MARIST**  
NEW HAMPSHIRE

**INTERNATIONAL, co-ed Catholic overnight camp for campers ages 6-16 years old.**

[www.campmarist.org](http://www.campmarist.org) / (603) 539 4552

**ACCREDITED**



J & E ACCOUNTING & TAX SERVICES INC  
ASH WASILIDAS, CPA  
Accounting & Business and Personal Tax Services



945 Concord Street, Suite 109 Framingham, MA 01701  
Phone: 617-462-4651  
Email: info@ashcpa.com Website: www.ashcpa.com

**FLEURY**  
FINISH CARPENTRY

We offer a variety of commercial and residential services from custom finish carpentry to full kitchen remodels

MA GC License and Fully Insured  
**718-708-9249**  
**www.fleuryfc.com**

Fleury Finish Carpentry is owned and operated by husband and wife team, Vinny and Adele Fleury.

**REMAX Culture**  
**Maria Paulina Correa**  
**REALTOR®**

Hablo Espanol & Falo Portugues  
paulinacorreacoelho@gmail.com



146 Main Street, Hudson MA 01749  
**508-735-4833**

**AD SPACE AVAILABLE**  
617-779-3771



**SENIOR CARE OPTIONS**  
IN FRAMINGHAM, MA

**CARMEL TERRACE ASSISTED LIVING**  
ST. PATRICK'S MANOR  
NURSING & ROSARIE CENTER  
FOR SHORT-TERM REHABILITATION

CONTINUUM OF CARE ON ONE CAMPUS, WHERE TWO OUTSTANDING HOMES WORK TOGETHER TO MEET EVOLVING NEEDS — THE DIFFERENCE IS LOVE.

INDEPENDENT & ASSISTED LIVING



**LAVELLE & Co. PAINTING CONTRACTORS**

**Trusted Painting & Construction Services**

617-787-1907 • www.lavelleco.com

 **Tamburrini Painting Inc**

- Residential | Commercial
- Interior | Exterior
- Deck | Porches
- Pressure Washing
- Cabinet Refinishing



scan for all services

Jamie Tamburrini  
617-694-8001

 **K & S Auto Inc.**

**A BUSINESS BUILT ON QUALITY AND HONESTY**

67 Beaver St. Framingham  
508-872-9452  
www.kandsauto.com

 **ELEPHANT ENERGY**

Ready for a climate-friendly home?

**mass save HEAT PUMP INSTALLER**

We've electrified 1,500+ homes with custom system design, expert heat pump installations, hassle-free rebate processing & dedicated project management.

Give us a call and learn more:  
**(617) 720-2286**  
elephantenergy.com

**PAUL MACRINA**  
Electrical

Your family electrician.

**(508) 359-7954**  
www.PaulMacrina.com



 **Twenty Five Motors**

Servicing all your domestic and foreign car care needs.

Family Owned Business • Parishioner of Good Shepherd

**Complete auto repair for domestic and foreign vehicles.**

**135 W. Central St. Natick**  
**508-433-6777**  
www.twentyfivemotors.com

**AD SPACE AVAILABLE**  
617-779-3771

 **Ron's TIRE & SERVICE**

Since 1992 **Tires • Auto Repair**

We are here when you need us

Large Inventory of All Major Tire Brands & Sizes



**635 Waverly St. Framingham**  
**www.ronstire.com | 508-872-2266**

 **STAND OUT**  
COLOR ADVERTISING  
**617-779-3771**

 **CHESTERTON ACADEMY OF THE IMMACULATE**

A Joyfully Catholic, Classical High School

**Be a Crusader for a Day!**

To schedule a Shadow Day, call **508-834-9849**

25 Clinton Street, Framingham  
Visit [chestertonimmaculata.org](http://chestertonimmaculata.org)

\*Our priority application deadline is January 14

"Jesus Wept." John 11:35

**John C. Bryant Funeral Home**

"Serving families and individuals as we would be served."

**56 Pemberton Road • Wayland, Massachusetts 01778**

**508-653-4220**

Cynthia F. Bryant, Director  
Geoffrey Bryant Leard, Director  
**www.johncbryantfuneralhome.com**