

Welcome to Good Shepherd Parish

August 31, 2025

22nd Sunday in Ordinary Time



Great Banquet by The Brunswick Monogrammist

“When you hold a banquet, invite the poor, the crippled, the lame, the blind;
blessed indeed will you be because of their inability to repay you.” Luke 14:13-14

GOOD SHEPHERD PARISH VISION STATEMENT

Good Shepherd Parish strives to be a vibrant, welcoming community where every person can experience the Father's love. Through the Gospel proclamation, prayer, and joyous sacramental celebration, Good Shepherd Parish will inspire parishioners to discern and live out their vocations and to actively evangelize the world. As we bear witness to the Risen Christ, Our Lord and Savior, we aspire to serve our parish community. We will seek to welcome home the new, the lost, and the disheartened by using the gifts and fruits of the Holy Spirit..

GOOD SHEPHERD PARISH MISSION STATEMENT

We, the Roman Catholic community of Good Shepherd Parish, strive to be a living sign of Christ's love in and for the world.

In response to our Baptismal call, nourished by the Eucharist and guided by the values of the Second Vatican Council, we seek to continue the mission of Jesus Christ by welcoming, supporting and guiding all through prayer, sacramental celebration, service and education.

PARISH STAFF

Pastor:
Fr. Laurence "Ren" Tocci
Ext. 14
frren@goodshepherdwayland.org

Senior Priest in Residence:
Rev. Austin H. Fleming, M.A.
fraustin@goodshepherdwayland.org
Fr. Fleming's daily blog:
ConcordPastor.blogspot.com

Permanent Deacon:
Deacon Colm McGarry Ext. 22
Director of Youth Ministry
cmcgarry@goodshepherdwayland.org
youthministrywayland@gmail.com

Finance & Operations Manager :
Liliana Lucas Ext. 18
llucas@goodshepherdwayland.org

Faith Formation Director (K-5):
Debora S. Robertson Ext.12
dspairani@goodshepherdwayland.org

Director of Music Ministry:
Jay Maenhout Ext. 33
End-of-Life Doula
jmaenhout@goodshepherdwayland.org

Director of My Brother's Table:
Laurie Hojlo
happyhojlos@verizon.net

Parish Nurse:
Jean Gifford, RN, BSN, PMH-BC Ext. 25
End-of-Life Doula
jgifford@goodshepherdwayland.org

Communications & Sacramental Records:
Kat Holmstrom Ext. 13
kholmstrom@goodshepherdwayland.org

Administrative Assistant:
Vina Sousa Ext. 10
vsousa@goodshepherdwayland.org

Facilities Staff:
Steve McCarthy & Julio Pazmino Ext. 18



ST. ANN CHURCH, 134 COCHITUATE RD, WAYLAND, MA



ST. ZEPHERIN CHURCH, 99 MAIN ST, WAYLAND, MA

Mass Times

Saturday, 4:00 PM St. Ann
Sunday, 8:30 AM St. Zepherin
Sunday, 10:30 AM St. Ann

Confession

Saturday, 3:00 –3:45 PM
St. Ann
(or by appointment)

Weekday Masses

Monday—Tuesday
9:00 AM St. Ann
Wednesday—Friday
9:00 AM St. Zepherin

Mass Intentions

SUNDAY, AUGUST 31

8:30 AM

PEOPLE OF
GOOD SHEPHERD PARISH
10:30 AM

RYAN FANNING

MONDAY, SEPTEMBER 1

9:00 AM

GOOD SHEPHERD PARISH
MEMORIAL SOCIETY
TUESDAY, SEPTEMBER 2

9:00 AM

MILLIE CHOINSKI &
RUTH (CHOINSKI) FORNES
WEDNESDAY, SEPTEMBER 3

9:00 AM

GRETta ROZARIO

Parish Calendar

MONDAY, SEPTEMBER 1
OFFICE CLOSED LABOR DAY
THURSDAY, SEPTEMBER 4

10 AM—2 PM

NURSE JEAN
PARISH CENTER
1 PM Walk With Her!

1—3 PM

PRAYER SHAWL MINISTRY
PARISH CENTER
7 PM

KNIGHTS OF COLUMBUS
ST. ANN'S HALL

Parish Office: (508) 650—3545

99 Main Street

Wayland, MA

Office Hours:

Monday—Thursday

9 AM—3 PM

Friday 9 AM—12 PM

Four Loves (Part Four) . . .

“Freely you have received,” Jesus told His disciples as He sent them out on mission; “freely give.”

This isn't a quid-pro-quo exchange that our Lord demands; it's not, in the words of a movie from some twenty years ago, “paying it forward”. It's receiving from God a gift of love that's so extravagant, so pure, that it breeds the kind of joy that inspires one to make a gift of oneself in emulation. The Greek word for this is *agape* (ah-gah-pay); and C. S. Lewis terms it “gift-love”, in contrast to “need-love”. It's the word most often used in the New Testament when Jesus or the apostles talk about love.

Agape is a self-giving love. It's the highest form of love—a love that is interested only in the true happiness of the beloved, regardless of what it means for the lover personally. This is the form of love that St. Thomas Aquinas had in mind when he defined love as “willing the good for the other”. Which means that, ultimately, love is a choice—an act of the will, not a pretty feeling or an intense emotion. “Greater love has no man,” Jesus famously said, “than to lay down his life for his friends” (and yes: He uses the word *agape*).

If we try to come up with an illustration from everyday life, I think we'd be hard-pressed to find a suitable example. I'll often hear it applied to soldiers putting themselves in harm's way, or even of a dog who throws himself at a grizzly bear in defense of its master. But these aren't quite right. The soldier may be defending an ideal, a principle, or a way-of-life that he cherishes, but no one has *agape* for anything so large and abstract as one's nation or way-of-life. Patriotism is its own fervor, seasoned with a healthy dose of *storge*. No one goes to war to die for his country; the soldier goes to war to fight for his country. He might be willing to lay down his life for his nation, but he doesn't expressly give his life in a deliberate act of self-annihilation. And in the case of the dog: the animal isn't aware of its own mortality. It fights to protect its owner, without thought that it could be killed, or even understanding what death is.

Lewis, I think correctly, identifies certain approximations of gift-love that are given to us naturally, that resemble *agape* but don't exactly approach the same level. His exploration of these natural gift-loves is worth reflecting on:

These never quite seek simply the good of the loved object for the object's own sake. They are biased in favour of those goods they can themselves bestow, or those which they would like best themselves, or those which fit in with a pre-conceived picture of the life they want the object to lead. But Divine Gift-love—Love Himself working in a man—is wholly disinterested and desires what is simply best for the beloved.

If Lewis is right, and I think there's at least a great deal of

truth and wisdom in this observation, then natural gift-love has a lot of need-love mixed in with it, rather like electrum is a fusion of gold and silver. But, as he recognizes, the grace of genuine *agape* that God pours into our hearts at baptism is purely a gift specially given by Him—a gift *of* Himself, given *from* Himself.

I think at its most authentic, there's nothing chivalrous about *agape*; it's not the grand gestures of a Sir Lancelot or a Don Quixote. Purely speaking, *agape* is the surrender to whatever is necessary for the loved one to flourish most fully. In this regard, *agape* can be the most agonizing sort of love, not the most blissful.

It's the struggle of controlling our natural affections in order to achieve the highest good for the one we love. This is the Lord's challenge to us when He says that anyone who doesn't despise his father and mother, wife and children, brothers and sisters in preference to Him can't be called his disciple. He's not requiring us to actually hate those dearest to us, not in the sense of harboring poisonous feelings toward them. Rather, He's insisting that love for Him—the Truth incarnate—has to take priority. There's a total devotion in *agape* that requires hard choices, because *agape* isn't content to do things by halves. For this reason, it can even be physically traumatic as the lover learns to cut out from his/her heart the pleasures of natural attachments and grows toward the absolute consummation of *agape*.

Fickle and scattershot as we are, *agape* is not something we can sustain by our own powers. We may have flashes of it every now and then, it may catch us like a passing breeze carries a fallen leaf for a yard or two, but human nature is far too weak and selfish to keep *agape* up for long. In order to abide continuously in *agape* we need the supernatural grace of our communion with God. This is what Jesus means when, in John's Gospel, He tells us that only those who abide in His love will bear much fruit. He equips us with the grace to love with this absolute love; and to provide an example, in His earthly life He demonstrated for us what such *agape* looks like.

It's the sacrifice of the Cross. Christ recognized that it was His Passion and death—and only His Passion and death—that was capable of breaking the chains of sin that drag us human creatures down. No one else could substitute for Him on that cross. No other event could suffice as an alternative path. Only His Passion would do. And it was this recognition that spurred Him on to pour Himself out entirely as an oblation for us, without hesitation. This explains why there's no contradiction between Mark's gospel that has Jesus being “distressed and agitated” just before His arrest, and John's account of His fearlessness before the patrols who came to cart Him off. He may have been disturbed to His very core at the price He was to pay, but He had no second thoughts about paying it. In his humanity, Jesus quaked at love's demands. But in His divinity, He stood unflinching in Pilate's face.

~ Fr. Ren



PARISH OFFICE & ST. ZEPHERIN CAMPUS IS CLOSED
FRIDAY, AUGUST 29TH & MONDAY, SEPTEMBER 1ST

MY BROTHER'S TABLE

AT GOOD SHEPHERD PARISH

CHOIR OPEN REHEARSAL & DESSERT SOCIAL

You are invited to observe rehearsal and see what singing in the choir is all about.

Our choir members are incredibly talented bakers.
Come enjoy the fruits of their labor!



Monday, September 15
7:00pm in the Parish Center

No commitment required!
Just come have a good time with us
singing and praying together.



READINGS & OBSERVANCES 2025 YEAR C

22ND SUNDAY ORDINARY TIME Aug 31	Sir 3:17-18, 20, 28-29/Ps 68:4-5, 6-7, 10-11/Heb 12:18-19, 22-24a/Lk 14:1, 7-14
MONDAY Sept 1	<i>Labor Day</i> 1 Thes 4:13-18/Ps 96:1+3, 4-5, 11-12, 13/Lk 4:16-30
TUESDAY Sept 2	1 Thes 5:1-6, 9-11/Ps 27:1, 4, 13-14/Lk 4:31-37
WEDNESDAY Sept 3	<i>Saint Gregory the Great, Pope and Doctor of the Church</i> Col 1:1-8/Ps 52:10, 11/Lk 4:38-44
THURSDAY Sept 4	Col 1:9-14/Ps 98:2-3ab, 3cd-4, 5-6/Lk 5:1-11
FRIDAY Sept 5	<i>Saint Teresa of Calcutta</i> Col 1:15-20/Ps 100:1b-2, 3, 4, 5/Lk 5:33-39
SATURDAY Sept 6	Col 1:21-23/Ps 54:3-4, 6+8/Lk 6:1-5
23RD SUNDAY ORDINARY TIME Sept 7	Wis 9:13-18b/Ps 90:3-4, 5-6, 12-13, 14+17/Phlm 9-10, 12-17/Lk 14:25-33

Pilot Bulletins

Prayer Shawl Ministry

Next date:
September 4th

1st Thursdays
1:00 - 3:00 PM

Where:

St. Zepherin Parish Center
All are welcome!
Coming together
to knit for others. You may
bring your own projects, also.

Please contact the Parish
Office if there is someone
you would like to
recommend to receive one
of the blessed shawls!

(508) 650-3545

Contact:

Joanne Berry
(508 524-8630)

or

Regina Kennedy
(508 358-7684)



GOOD SHEPHERD PARISH

PARISH NURSE

Jean Gifford, RN, BSN, PMH-BC

End-of-Life Doula

jgifford@goodshepherdwayland.org

(508) 650-3545 ext. 25

COMPLIMENTARY SERVICE

FOR YOU,
OUR PARISH, &
OUR COMMUNITY

Thursday, September 4
10 AM - 2 PM
1 PM walk! meet on the plaza
Monday, September 8
10 AM - 2 PM
Thursday, September 11
10 AM - 2 PM
1 PM walk! meet on the plaza
Monday, September 15
10 AM - 2 PM
Thursday, September 18
10 AM - 2 PM
1 PM walk! meet on the plaza

- Blood Pressure checks
- Prescription medication review
- Monthly medical presentations
- Referrals
- Remembrance ministry
- Walk with her!

Monday, September 1
LABOR DAY
PARISH OFFICE &
ST. ZEPHERIN CAMPUS CLOSED

TIPS FROM THE
Stethoscope

Welcome back to work or school.
Continue to harvest those bountiful
gardens.

Kids, be safe.

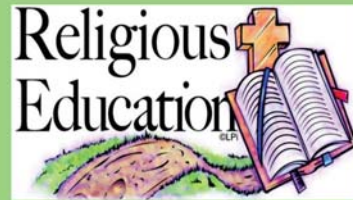
Continue to take time out of your
day for you.

If overwhelmed, please seek help.
As Always, be kind to yourself.

If I can help, please call, email or
stop by the Parish Center.

Be well,
Nurse Jean

jgifford@goodshepherdwayland.org 508-650-3545 ext 25



FAITH FORMATION CLASSES START SOON!

FOR ALL FAMILIES IN
GRADES K-9

Classes Begin on
Sunday, September 7th :
St. Ann's Hall: 9:00 - 10:15 AM
&

St. Zepherin Parish Center: 9:30 - 10:45 AM

RELIGIOUS EDUCATION
REGISTRATION 2025-2026

GLORIA

Glo-ry! Glo-ry to God in the high-est. Glo-ry!

Glo-ry to God in the high-est, and on earth peace to peo-ple of good will. We praise you, we bless you, we a-dore you, we glo-ri-fy you, we give you thanks for your great glo - ry, Lord God, heav-en-ly King, O God, al - might-y Fa - ther. Lord Je-sus Christ, On-ly Be - got - ten Son, Lord God, Lamb of God, Son of the Fa - ther, you take a - way the sins of the world, have mer-cy on us; you take a - way the sins of the world, re-ceive our prayer; you are seat-ed at the right hand of the Fa-ther, have mer-cy on us. For you a-lone are the Ho-ly One, you a-lone are the Lord, you a-lone are the Most High, Je - sus Christ, with the Ho - ly Spir-it, in the glo-ry of God the Fa - ther. Glo-ry! Glo-ry to God in the high-est. Glo-ry! Glo-ry to God in the high-est, and on earth peace to peo-ple of good will. A - men.

Text © 2010, ICEL

Ed Bolduc
Music © 2011, WLP

GOSPEL ACCLAMATION

Al-le-lu - ia, al-le-lu - ia, al-le-lu - ia.

Al-le-lu - ia, al-le-lu - ia, al-le-lu - ia.

Music: *Mass of Saint Ann*, Ed Bolduc, © 2011, World Library Publications, a division of GIA Publications, Inc.

HOLY, HOLY, HOLY

Ho - ly, Ho - ly, Ho - ly Lord God of hosts.

Heav-en and earth are full of your glo-ry. Ho - san - na in the high-est. Bless-ed is he who comes in the name of the Lord. Ho - san - na, ho - san - na in the high-est. Ho - san - na, ho - san - na in the high - est.

Text: ICEL, © 2010

Music: *Mass of Saint Ann*, Ed Bolduc, © 2011, World Library Publications, a division of GIA Publications, Inc.

MEMORIAL ACCLAMATION B

When we eat this Bread and drink this Cup, we pro-claim your Death, O Lord, un-til you come a - gain, un - til you come a - gain.

Text: ICEL, © 2010

Music: *Mass of Saint Ann*, Ed Bolduc, © 2011, World Library Publications, a division of GIA Publications, Inc.

AMEN

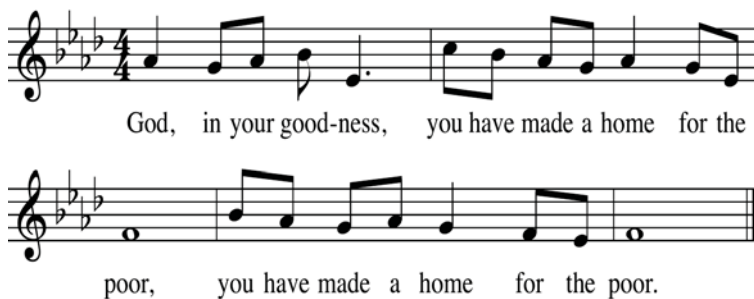


Music: *Mass of Saint Ann*, Ed Bolduc, © 1992, 2011, World Library Publications, a division of GIA Publications, Inc.

GOD, IN YOUR GOODNESS

Psalm 68

Tony Alonso

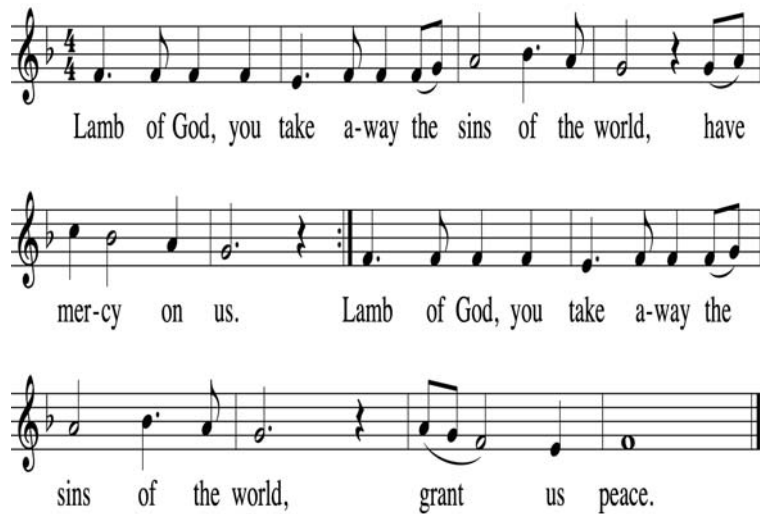


The English translation of the Psalm Response from the *Lectionary for Mass* © 1969, 1981, 1997, International Commission on English in the Liturgy Corporation. All rights reserved.
 Music Copyright © 2012 by GIA Publications, Inc. • All Rights Reserved • Printed in U.S.A.
 7404 S. Mason Ave., Chicago, IL 60638 • www.giamusic.com • 800.442.1358

Verses:

1. The just shall rejoice at the presence of God;
They shall exult with glad rejoicing.
O sing to God; make music to his name.
The LORD is his name.
2. Father of orphans, defender of widows:
Such is God in his holy place.
God gives the desolate a home to dwell in;
He leads the prisoners forth into prosperity.
3. You poured down, o God, a generous rain;
When your people languished, you restored
Their inheritance.
It was there that your flock began to dwell.
In your goodness, O God, you provided
For the poor.

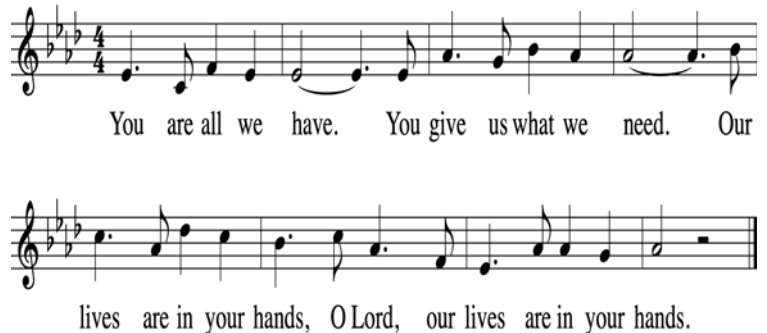
LAMB OF GOD



Music: *Mass of Saint Ann*, Ed Bolduc, © 1992, 2011, World Library Publications, a division of GIA Publications, Inc.

You Are All We Have

Refrain



Verses

1. Protect me, Lord; I come to you for safety.
I say, "You are my God."
All good things, Lord, all good things
that I have come from you,
the God of my salvation.
2. How wonderful are your gifts to me,
how good they are!
I praise the Lord who guides me
and teaches me the way of truth and life.
3. You are near, the God I seek.
Nothing can take me from your side.
All my days I rest secure;
you will show me the path that leads to life.

Prayer
Requests



GOOD SHEPHERD PARISH

PRAYER LINE:

GSPPRAYERS@GMAIL.COM

OR CALL THE NEW LINE
TO LEAVE A MESSAGE :
(508) 650 - 3545 EXT. 11



+St. Martin
de Porres,
pray for us!+

Text: Francis Patrick O'Brien, b.1958
Tune: Francis Patrick O'Brien, b.1958
© 1992, GIA Publications, Inc.

SEATING PLAN?

Why did a Pharisee invite Jesus to a Sabbath dinner (Lk 14:1-14)? Hadn't his reputation for being an inconvenient guest gotten around? Of course, Jesus as the guest of honor would have been a scoop for any society page. The latest Jesus disruption would be front page. He didn't disappoint. First the other guests, then his host are criticized. To guests jockeying for places at table, Jesus asks how that behavior would play out at a wedding banquet. Everyone knows the complications of seating family and guests in that situation. With a touch of ancient comedy, Jesus pictures some guest seating himself at the head table only to suffer public humiliation when forced to change seats.

Turning to his host, Jesus challenges the social ties that were part of formal dining behavior among those wealthy enough to have dining rooms – and servants to produce banquet cuisine. People tracked who was owed an invitation ... obligations that sometimes lead couples to elope. Several years ago, my niece violinist was recruited from lunch in VT to play for a couple at the Congregational church. They “just couldn't take it anymore” and googled a local inn advertising “Can't take it? Elope” services.

For a Sabbath meal, members of the host's extended family would have been present. How would they react to Jesus saying, “don't invite friends or relatives”? No one had to look far to find the alternate guests, “poor, crippled, lame, blind” ... or in our cities, “unhoused”, “street people”. Jesus persistently advocates for the suffering – and perhaps, with some sarcasm tells his host not to worry about the “scorecard”. God's got it covered. Of course, the vision of that great assembly in heaven in today's reading from Hebrews 12:22-24 blows any calculation of seating plan honors out of the water. Open the doors to such a vast realm of angels, saints, so many known and unknown “spirits of the just made perfect”, and even the greatest will feel small enough for the kids table.

PHEME PERKINS, Ph.D.
Joseph Professor
Of Catholic Spirituality
Boston College



A Message from Fr. Deotacious Chikontwe, SMA

My name is Fr. Deotacious Chikontwe, SMA, and I'm originally from Zambia, a country in southern Africa. I am currently working as a missionary in the Arab Republic of Egypt. I was ordained a priest on August 29, 2020, and by God's grace, this year I am celebrating five years of missionary priesthood.

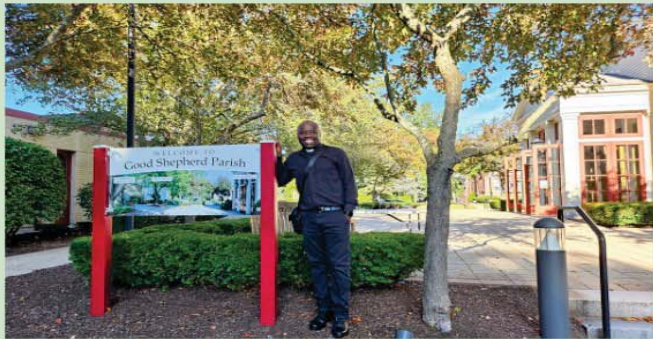
I belong to the **Society of African Missions Fathers (SMA Fathers)**, a congregation of missionaries founded on December 8, 1856. Our founding charism was to evangelize Africa and people of African origin. Today, we work in many countries and dioceses across the world. We are known for our simplicity of life, for living among the poor, for transforming outstations into parishes, and for leaving them to the diocese when they are ready to be cared for by diocesan priests. We often work in rural areas, sometimes without water, internet, electricity, or cell service. Our mission is to respond to Christ's command: "Go out into the whole world and make disciples, baptize them in the name of the Father, and of the Son, and of the Holy Spirit." Some of our brothers even work in war-torn countries. We find great joy in Christ who has called us.

I want to take this opportunity to thank the people of Good Shepherd Parish for the wonderful welcome you gave me during my two months here. Thank you to Fr. Ren, the pastor, who has been so good to me and treated me as a younger brother. Thank you to Fr. Austin; even in his absence, he welcomed me the day I arrived. Thank you to Deacon Colm. Thank you to Liliana and her team in the parish management offices. Thank you to everyone for your wonderful prayers and support. Please continue to support us in our missions.

Remember that your generosity towards our mission allows us to go to places where they have not yet heard about Jesus Christ our Lord. Some places in this world only see a priest once a year, during the feasts of Christmas and Easter. Your charitable hearts enable the Church to continue forming missionaries who will carry on the mission of Christ to every race, nation, and people. I appeal to you and your generous hearts.

God bless you all, and I hope to see you again one day.

Fr. Deotacious Chikontwe, SMA.



Thank you, Fr. Deo
WE WILL MISS YOU!



BATH REMODEL

Safety. Style. Stress-Free Installation.

CALL NOW
833.791.9968

SPECIAL OFFER

Waiving All Installation Costs!

Add'l terms apply. Offer subject to change and vary by dealer.
Expires 9/28/25.



LeafFilter
GUTTER
PROTECTION

End Cleaning Out Gutters!

Zero Clogged Gutters Guaranteed

2025 Summer
Home Protection Event!

LIFETIME
TRANSFERABLE
WARRANTY



Without LeafFilter

With LeafFilter

Promo Code: 285

CALL **877-319-0949**
FOR A **FREE INSPECTION!**

Limited time only!*

Bonus offer!*

75% OFF + \$250
Installation Discount

*\$250 discount (no cash value) is for same-day signing only. This offer cannot be combined with any other promotion or offer. No obligation estimate valid for 1 year. +See representative for full warranty details. See website for all license and registration numbers. AR 366920925, AZ ROC 344027, CA 1035795, CT HIC 0671520, DC 4.20223E+11, FL CBC056678, IA C127230, ID RCE-51604, LA 559544, MA 213292, MD MHIC111225, MI262300331, 262300330, 262300329, 262300328, 262300318, 262300173, MN IR810524, MT 2661922, ND 47304, NE 50145-24, 50145-23, NJ 13VH13285000, NM 408693, NV 86990, OR 218294, PA PA179643, RI GC-41354, TN 10981, UT 10783658-5501, VA 2705169445, VT 174.0000871, WA LEAFLH-763PG, WI No. 537-DCFRR WV WV056

The Bath or Shower You've Always Wanted IN AS LITTLE AS 1 DAY



**\$1000
OFF***

OR

\$1500 OFF when financing
with remodelingloans.com™

0% Interest
For 18 Months™

OFFER EXPIRES 9/30/2025

Military & Senior Discounts Available



CALL NOW!

(844) 300-2419

*Includes labor and product; bathtub, shower or walk-in tub and wall surround. This promotion cannot be combined with any other offer. Other restrictions may apply. This offer expires 9/30/2025. Each dealership is independently owned and operated. **Third party financing is available for those customers who qualify/Participating dealers only. See your dealer for details. ©2025 Bath Concepts Industries.



CONNELL

ROOFING • SIDING • GUTTERS



ROOFING | SIDING | GUTTERS | WINDOWS & DOORS

Servicing Metro-West Boston & Cape Cod, Massachusetts

Connell Roofing, based in Wrentham, MA, has been providing top-tier roofing services to both residential and commercial property owners for over 60 years. Their commitment to quality, integrity, and customer satisfaction has established them as a leading roofing company in Massachusetts.

REQUEST ESTIMATE: 781-444-7577

www.connellroofing.com

Our windows will lower your utility bill and keep your home comfortable.





*Terms apply

**BUY 4 WINDOWS
GET 4 FREE***

Offer ends 9/30/2025

\$0
down payment

\$0
monthly payment

0%
interest rate

for 2 years

Offer ends 9/30/2025

▼ Schedule your FREE quote! ▼

855.919.2625



PREMIER REMOVAL SERVICE 617-893-9824

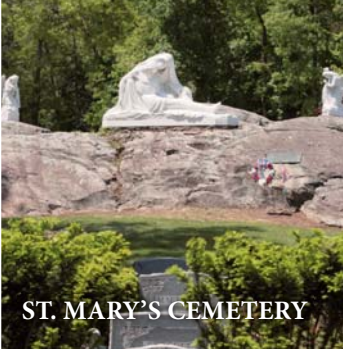
Steven Conroy - Owner

www.lugaway.com | info@lugaway.com

- Home Cleanouts
- Garage Cleanouts
- Office Cleanouts
- Storage Unit Cleanouts
- Estate Cleanouts
- Furniture
- Appliances
- Televisions
- Yard Waste
- Construction Debris
- Demolition

AD SPACE AVAILABLE

617-779-3771



ST. MARY'S CEMETERY

St Mary's Cemetery in Needham, founded in the 1870's, is the parish cemetery of Mary Immaculate of Lourdes. The Cemetery is a reverent resting place for those awaiting reunion with the Risen Lord. The decision to pre-plan and purchase interment rights is a responsible and thoughtful gesture, sparing loved ones the stress of making difficult decisions during a time of grief and loss.

For information, call the cemetery staff at Mary Immaculate of Lourdes Church at 781-235-1841. St. Mary's Cemetery | 1 Wellesley Avenue, Needham, MA 02494

\$349.99

TEETH WHITENING

VALUED AT \$880

&

FREE

COMPREHENSIVE CONSULTATION—

VALUED AT OVER \$1200

Mention this advertisement for the discount.

Barry Bessler, DMD • 508-358-2336

Visit our website: www.besslerkang.com

30 Boston Post Rd., Wayland

COSMETIC & GENERAL DENTISTRY | SMILE MAKEOVERS
FULL MOUTH RECONSTRUCTION & MORE

BESSLER & KANG, DMD

PROSTHODONTISTS

REVIEWS:




The CatholicTV Network

TELETHON

2025

FRIDAY AND SATURDAY

SEPTEMBER 19 & 20

9AM - 9PM ET



 www.CatholicTV.org

"He has risen." Matt 28:6



HH3
HAND HEWN
BUILDERS

Quality Craftsmanship You Can Trust

Servicing Concord & Surrounding Communities

- Licensed & Insured -

JOSEPH FEENEY

617-824-4643

AD SPACE AVAILABLE

617-779-3771

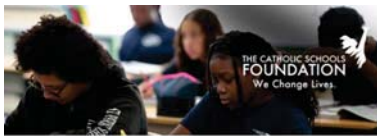
COOK'S AUTOMOTIVE



Auto Repair | Maintenance | Oil Changes | Tires

508-358-7760

338 Boston Post Rd. Wayland



CHANGE LIVES TODAY!

The Catholic Schools Foundation is the largest K-12 scholarship-granting organization in the state of Massachusetts. Make a difference in the lives of students in need by providing them with a high-quality Catholic education.

Learn how you can make a difference at:
www.csfboston.org



SUPPORT STUDENTS TODAY!



J & E ACCOUNTING & TAX SERVICES INC
ASH WASILIDAS, CPA
Accounting & Business and Personal Tax Services



945 Concord Street, Suite 109 Framingham, MA 01701
Phone: 617-462-4653
Email: info@ashcpa.com Website: www.ashcpa.com

FLEURY
FINISH
CARPENTRY

We offer a variety of commercial and residential services from custom finish carpentry to full kitchen remodels

MA GC License and Fully Insured
718-708-9249
www.fleuryfc.com

Fleury Finish Carpentry is owned and operated by husband and wife team, Vinny and Adele Fleury.

JF
JASON FOLEY
ELECTRICIAN

FULLY LICENSED & INSURED

857-312-1149
jason.foley.electrician@gmail.com

Ron's TIRE & SERVICE Since 1992
Tires • Auto Repair
We are here when you need us

Large Inventory of All Major Tire Brands & Sizes



635 Waverly St. Framingham
www.ronstire.com | 508-872-2266



Architectural Design | Planning | Construction

**DESIGNER CONSTRUCTION
MANAGEMENT GROUP INC**

We Craft Your Vision!

Call us today

857-233-1293

www.designerconstructiongroup.com



**SENIOR
CARE
OPTIONS**
IN FRAMINGHAM, MA



CARMEL TERRACE
ASSISTED LIVING
ST. PATRICK'S MANOR
NURSING & ROSARIE CENTER
FOR SHORT-TERM REHABILITATION



CONTINUUM OF CARE ON ONE CAMPUS, WHERE TWO
OUTSTANDING HOMES WORK TOGETHER TO MEET
EVOLVING NEEDS — THE DIFFERENCE IS LOVE.

INDEPENDENT &
ASSISTED LIVING
CARMEL TERRACE
954-455-7122
WWW.CARMELTERRACE.ORG/LOVE-RES
CENTRAL STREET FRAMINGHAM, MA 01701

**AD SPACE
AVAILABLE**

617-779-3771



**Tamburrini
Painting
Inc**

- Residential | Commercial
- Interior | Exterior
- Deck | Porches
- Pressure Washing
- Cabinet Refinishing



scan for all services

Jamie Tamburrini
617-694-8001

LAVELLE & CO. PAINTING
CONTRACTORS

Trusted Painting & Construction Services

617-787-1907 • www.lavelleco.com



K & S Auto Inc.



**A BUSINESS BUILT ON
QUALITY AND HONESTY**

67 Beaver St. Framingham
508-872-9452
www.kandsauto.com

PAUL MACRINA
Electrical

Your family electrician.

(508) 359-7954

www.PaulMacrina.com



**AD SPACE
AVAILABLE**

617-779-3771

 **clergytrust**

**SUPPORT OUR PRIESTS
THIS SEPTEMBER**

Your gift helps care for the health and
wellbeing of priests in good standing.

Give today at
clergytrust.org/september



**WAYLAND
AUTOMOTIVE**

Wayland Automotive
services all makes and
models

322 Commonwealth Rd. Wayland
508-653-6230 • www.waylandauto.com



**LICENSED
& INSURED
ROOFER**

**UNIVERSAL
ROOFING**

**WE'VE
GOT YOU
COVERED**

Residential Roofing • Commercial Roofing
Siding • Skylight Installation
Gutter Installation • Roof Replacement
Metal Roofs • Asphalt Shingle Roofs
Rubber Roofs

508-922-8108 | www.universalroofingma.com