

Welcome to Good Shepherd Parish

August 24, 2025

21st Sunday in Ordinary Time



The First Shall Be Last by James Tissot

"For behold, some are last who will be first, and some are first who will be last." Luke 13:30

GOOD SHEPHERD PARISH VISION STATEMENT

Good Shepherd Parish strives to be a vibrant, welcoming community where every person can experience the Father's love. Through the Gospel proclamation, prayer, and joyous sacramental celebration, Good Shepherd Parish will inspire parishioners to discern and live out their vocations and to actively evangelize the world. As we bear witness to the Risen Christ, Our Lord and Savior, we aspire to serve our parish community. We will seek to welcome home the new, the lost, and the disheartened by using the gifts and fruits of the Holy Spirit..

GOOD SHEPHERD PARISH MISSION STATEMENT

We, the Roman Catholic community of Good Shepherd Parish, strive to be a living sign of Christ's love in and for the world.

In response to our Baptismal call, nourished by the Eucharist and guided by the values of the Second Vatican Council, we seek to continue the mission of Jesus Christ by welcoming, supporting and guiding all through prayer, sacramental celebration, service and education.

PARISH STAFF

Pastor:
Fr. Laurence "Ren" Tocci
Ext. 14
frren@goodshepherdwayland.org

Senior Priest in Residence:
Rev. Austin H. Fleming, M.A.
fraustin@goodshepherdwayland.org
Fr. Fleming's daily blog:
ConcordPastor.blogspot.com

Permanent Deacon:
Deacon Colm McGarry Ext. 22
Director of Youth Ministry
cmcgarry@goodshepherdwayland.org
youthministrywayland@gmail.com

Finance & Operations Manager :
Liliana Lucas Ext. 18
llucas@goodshepherdwayland.org

Faith Formation Director (K-5):
Debora S. Robertson Ext.12
dspairani@goodshepherdwayland.org

Director of Music Ministry:
Jay Maenhout Ext. 33
End-of-Life Doula
jmaenhout@goodshepherdwayland.org

Director of My Brother's Table:
Laurie Hojlo
happyhojlos@verizon.net

Parish Nurse:
Jean Gifford, RN, BSN, PMH-BC Ext. 25
End-of-Life Doula
jgifford@goodshepherdwayland.org

Communications & Sacramental Records:
Kat Holmstrom Ext. 13
kholmstrom@goodshepherdwayland.org

Administrative Assistant:
Vina Sousa Ext. 10
vsousa@goodshepherdwayland.org

Facilities Staff:
Steve McCarthy & Julio Pazmino Ext. 18



ST. ANN CHURCH, 134 COCHITUATE RD, WAYLAND, MA



ST. ZEPHERIN CHURCH, 99 MAIN ST, WAYLAND, MA

Mass Times

Saturday, 4:00 PM St. Ann
Sunday, 8:30 AM St. Zepherin
Sunday, 10:30 AM St. Ann

Confession

Saturday, 3:00 –3:45 PM
St. Ann
(or by appointment)

Weekday Masses

Monday—Tuesday
9:00 AM St. Ann
Wednesday—Friday
9:00 AM St. Zepherin

Mass Intentions

SATURDAY, AUGUST 23

4:00 PM

PEOPLE OF

GOOD SHEPHERD PARISH

SUNDAY, AUGUST 24

8:30 AM

A SPECIAL INTENTION

10:30 AM

DONALD RIDER

FRIDAY, AUGUST 29

9:00 AM

**MILLIE CHOINSKI &
RUTH (CHOINSKI) FORNES**

PARISH OFFICE:
(508) 650—3545
99 MAIN STREET
WAYLAND, MA

HOURS:
MON—THURS
9 AM—3 PM
FRI 9 AM—12 NOON

Parish Calendar

MONDAY, AUGUST 25

10 AM—2 PM

NURSE JEAN

PARISH CENTER

WEDNESDAY, AUGUST 27

7—8 PM

SILVER ROSE SERVICE

KNIGHTS OF COLUMBUS

THURSDAY, AUGUST 28

10 AM—2 PM

NURSE JEAN

PARISH CENTER

1 PM Walk With Her!

7 PM

EUCCHARISTIC ADORATION
ST. ANN CHURCH

**FRIDAY, AUGUST 29 &
MONDAY, SEPTEMBER 1**
OFFICE CLOSED—LABOR DAY

Four Loves (Part Three) . . .

Raymond Carver, one of my favorite American authors, has a short story called *What We Talk About When We Talk About Love*. I was tempted to rip him off and use that for the title of this article, because this week's installment deals with what we usually mean when we talk about love: romantic love.

Romance is such a gigantic fascination in our society that even the Greek word for it is familiar to us. I'd be surprised if many of you had ever heard of *storge* or *philia* before; but *eros* might ring a bell or two in your ears. It's where we get the English word "erotic" from.

But *eros* is not blind sensuality—far from it. C.S. Lewis, as he usually does, offers a wonderful insight into this form of love. Whereas lust desires the act, *eros* desires the beloved: it wants the specific person. *Eros* draws us out of ourselves, so that our attention, our energies, are on the one we love. To quote Lewis, the one smitten with *eros* is "love's contemplative"—(s)he enjoys simply the thought of the beloved.

This may sound surprising, but *eros* actually comes closer to what we might call "unconditional love" than *philia* or the natural love *storge* do. It's loving the person because (s)he is who (s)he is. Remove the idiosyncrasies, the quirks, any facet of the beloved's personality; replace it with some other trait, and even in the same body with the same attractiveness, the love collapses. It is this one particular person, in a way that no one else possibly could, who strikes the soul of the lover. The Old-Testament book the *Song of Songs* captures the nature of *eros* beautifully. It's a love-poem about a lover and his beloved searching for each other. No other will do; each is entranced by the other: the lover for his beloved, and the beloved for her lover.

Eros is how poetry is made. Not just love sonnets, but all poetry is the attempt to capture in words the ineffable experience of being in love. This is how metaphors, similes, allegories, and all other creative uses of language were invented: to communicate the singular impression that the lover feels in the presence of the beloved. Granted, in the end it can't be spoken of, precisely because it's so unique and personal between these two specific people. But no matter: the poet still needs to try to sing of it, because singing is the voice of this sort of love.

With *eros* it's about the journey, not the destination. Maybe that's why we describe it as "romance"—a word that more literally means "adventure." Each day the lover and the beloved discover more about each other. I've been told by reliable authorities that it's this adventure—the always-deepening fascination with one another over years—that elevates the marital act itself. The act becomes more satisfying the more it is a gift of self to the other.

As wondrous as this fascination is between a man and a woman, it's positively mind-blowing when we stop to consider that it's also the love that God has for each of us. The Lord created each one of us uniquely and unrepeatably. We're not just the product of a biological process that He set in motion eons ago; we don't just speak of God as our Creator in a vague way of tracing our origin back to His prehistoric blueprints. He created each one of us specially and breathed a personal soul into our being. You and I, and every other human being ever conceived, was *loved* into existence. And not just with the familiar love the Greeks called *storge*; but truly with the mysterious, soul-moving love that is *eros*.

And this likewise explains the mystery of the Eucharist. C.S. Lewis writes of the *eros* between man and woman:

If we had not all experienced this, if we were mere logicians, we might boggle at the conception of desiring a human being, as distinct from desiring any pleasure, comfort, or service that human being can give. And it is certainly hard to explain. Lovers themselves are trying to express part of it (not much) when they say they would like to 'eat' one another.

This may be a metaphor coming from merely human lovers. But God Himself makes it a literal reality when He invests His entire Self—body, blood, soul, and divinity—into the Blessed Sacrament for us to consume. That's how much God loves us—that's *eros*!



~ Fr. Ren

Catechist Meeting Grades K-9

Tuesday, August 26th
at St. Zepherin Parish Center
from 7:30-8:30 pm.

OR

Tuesday, September 2nd
at St. Ann Hall
from 7:30-8:30 pm.



Parent Meeting

Thursday, Aug. 28th
On Zoom

From 7:00-8:00pm



READINGS & OBSERVANCES 2025 YEAR C

| | |
|--|--|
| 21ST SUNDAY ORDINARY TIME Aug 24 | Is 66:18-21/Ps 117:1, 2/Heb 12:5-7, 11-13/Lk 13:22-30 |
| MONDAY Aug 25 | <i>Saint Louis of France; Saint Joseph Calasanz, Priest</i> 1 Thes 1:1-5, 8b-10/Ps 149:1b-2, 3-4, 5-6a+9b/Mt 23:13-22 |
| TUESDAY Aug 26 | 1 Thes 2:1-8/Ps 139:1-3, 4-6/Mt 23:23-26 |
| WEDNESDAY Aug 27 | <i>Saint Monica</i> 1 Thes 2:9-13/Ps 139:7-8, 9-10, 11-12ab/Mt 23:27-32 |
| THURSDAY Aug 28 | <i>Saint Augustine, Bishop and Doctor of the Church</i> 1 Thes 3:7-13/Ps 90:3-4, 12-13, 14+17/Mt 24:42-51 |
| FRIDAY Aug 29 | <i>The Passion of Saint John the Baptist</i> 1 Thes 4:1-8/Ps 97:1+2b, 5-6, 10, 11-12/Mk 6:17-29 |
| SATURDAY Aug 30 | 1 Thes 4:9-11/Ps 98:1, 7-8, 9/Mt 25:14-30 |
| 22ND SUNDAY ORDINARY TIME Aug 31 | Sir 3:17-18, 20, 28-29/Ps 68:4-5, 6-7, 10-11/Heb 12:18-19, 22-24a/Lk 14:1, 7-14 |

Pilot Bulletins

Knitters' Craft Fair



PROCEEDS WILL BENEFIT
OUR GRADUATES AS THEY
FURTHER THEIR STUDIES IN EITHER
COLLEGE OR TRADE SCHOOL!

Contact Janie for more details or to make
donations: (508) 653-3423



SAVE THE DATE:
OCTOBER 18, 2025
ST. ZEPHERIN PARISH CENTER
10 AM - 2 PM
SATURDAY

Parish Picnic

Enjoy!

SUNDAY, SEPTEMBER 14

Beginning after the 10:30 AM Mass at St. Ann!

ALL ARE WELCOME!



Let's celebrate our community
with a Parish Appreciation Picnic!

goodshepherdwayland.org

GOOD SHEPHERD PARISH

PARISH NURSE

Jean Gifford, RN, BSN, PMH-BC

End-of-Life Doula

jgifford@goodshepherdwayland.org
(508) 650-3545 ext. 25

COMPLIMENTARY SERVICE

FOR YOU,
OUR PARISH, &
OUR COMMUNITY

- Blood Pressure checks
- Prescription medication review
- Monthly medical presentations
- Referrals
- Remembrance ministry
- Walk with her!



Monday, August 18

10 AM - 2 PM

Thursday, August 21

Will Not Be Available -

Parish Nurse Event in Braintree

Monday, August 25

10 AM - 2 PM

Thursday, August 28

10 AM - 2 PM

1 PM walk! meet on the plaza

Blood Pressure Clinic

Sunday, August 24

Parish Center 9:30 AM

Monday, September 1

LABOR DAY

PARISH OFFICE &

ST. ZEPHERIN CAMPUS CLOSED

*The Pleasure of Your Company is
requested at the Parish Center
after the 8:30 Mass on
August 24th for:*



**Coffee and Donuts
with the Hospitality
Committee**

and:

**Blood pressure
checks
with Nurse Jean**



All are welcome!

TIPS FROM THE
Stethoscope!

Back to school and work is fast
approaching, remember:
Get that summer reading started.
Prepare for the new or back to
school adventures.

Parents, it's okay to cry as your kids
are heading off to school.
If overwhelmed, please seek help.
As Always, be kind to yourself.

If I can help, please call, email or
stop by the Parish Center.

Be well,
Nurse Jean

jgifford@goodshepherdwayland.org

508-650-3545 ext 25

MY BROTHER'S
TABLE

AT GOOD SHEPHERD PARISH

GOOD SHEPHERD
PARISH LIBRARY

*located at St. Ann Church
across from the confessional*

Please feel free to come
visit our bookshelves and
check out a book!

For your convenience, the library
will be accessible
Mondays, Tuesdays & Thursdays
from 9:30 AM - 3 PM
Saturdays from 10 AM - MASS time

Glo-ry! Glo-ry to God in the high-est. Glo-ry!

Glo-ry to God in the high-est, and on earth peace to peo-ple of good will.

We praise you, we bless you, we a-dore you, we glo-ri-fy you.

we give you thanks for your great glo-ry.

Lord God, heav-en-ly King, O God, al-might-y

Fa-ther, Lord Je-sus Christ, On-ly Be-got-ten Son,

Lord God, Lamb of God, Son of the Fa-ther, you take a

way the sins of the world, have mer-cy on us. you take a

way the sins of the world, re-ceive our pray-ers: you are seat-ed at the right

hand of the Fa-ther. have mer-cy on us. For

you a-lone are the Ho-ly One, you a-lone are the Lord.

you a-lone are the Most High. Je-sus Christ, with the Ho-ly

Spi-rit, in the glo-ry of God the Fa-ther. Glo-ry!

Glo-ry to God in the high-est. Glo-ry! Glo-ry to God in the

high-est, and on earth peace to peo-ple of good will. A-men.

Lyrics: 2006 GCH

Ed Bolduc,
Music: 2011 GCH

GOSPEL ACCLAMATION

Al-le-lu - ia, al-le-lu - ia, al-le-lu - ia.

Al-le-lu - ia, al-le-lu - ia, al-le-lu - ia.

Music: Mass of Saint Ann, Ed Bolduc, © 2011, World Library Publications, a division of GIA Publications, Inc.

HOLY, HOLY, HOLY

Ho-ly, Ho-ly, Ho-ly Lord God of hosts.

Heav-en and earth are full of your glo-ry. Ho-

san-na in the high-est. Bless-ed is he who

comes in the name of the Lord. Ho-san-na, ho-

san-na in the high-est. Ho-san-na, ho-

san-na in the high-est.

Text: ICEL, © 2010

Music: Mass of Saint Ann, Ed Bolduc, © 2011, World Library Publications, a division of GIA Publications, Inc.

MEMORIAL ACCLAMATION B

When we eat this Bread and drink this Cup,

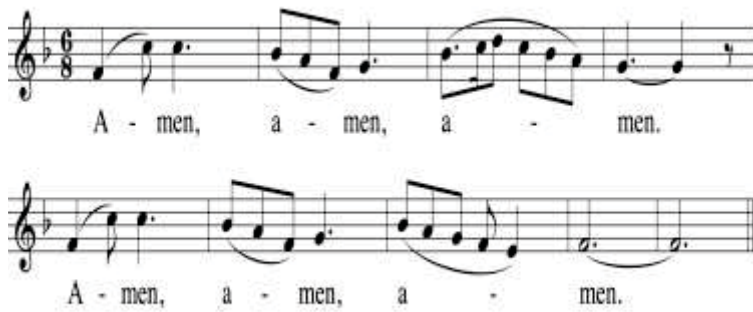
we pro-claim your Death, O Lord, un-till you come a-

gain, un-till you come a-gain.

Text: ICEL, © 2010

Music: Mass of Saint Ann, Ed Bolduc, © 2011, World Library Publications, a division of GIA Publications, Inc.

AMEN



Music: Mass of Saint Ann, Ed Bolduc, © 1992, 2011, World Library Publications, a division of GIA Publications, Inc.

LAMB OF GOD



Music: Mass of Saint Ann, Ed Bolduc, © 1992, 2011, World Library Publications, a division of GIA Publications, Inc.

"he said to Peter, "So, could you not stay awake with me one hour?" Matthew 26: 40

HOLY HOUR

"The only time our Lord asked the Apostles for anything was the night He went into agony. Not for activity did He plead but for an Hour of companionship."

-Ven. Archbishop
Fulton Sheen



August 28th at St. Ann Church
COME SPEND AN HOUR WITH JESUS
Adoration of the Blessed Sacrament

Every 2nd Thursday at St Zepherin ~ 7:00-8:00 PM

Every 4th Thursday at St Ann ~ 7:00-8:00 PM

Prayer Requests



+St. Martin
de Porres,
pray for us!+

Please email your prayer requests to:
GSPPRAYERS@GMAIL.COM

OR CALL :
(508) 650 - 3545 EXT. 11

GOOD SHEPHERD PARISH
PRAYER LINE:



As a faith community, we're here to share in each others' experiences and to lift each other in prayer. Whatever you're facing - whether it's a cause for joy, a challenge weighing you down, or a particular intention you're holding close to your heart - we want to join you in prayer.

You don't have to go to Rome to participate!



Local Pilgrimage Sites

Cathedral of the Holy Cross, Boston

Most Holy Redeemer, Boston

St. Clement Eucharistic Shrine, Boston

Holy Rosary Shrine, Lawrence

St. Joseph the Worker Shrine, Lowell

Divine Mercy Shrine in Salem, Salem

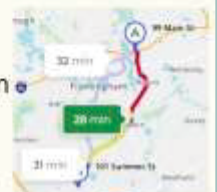
Blessed Andrew Phu Yen, Medford

Missionary Shrine of Our Lady of Fatima, Holliston

Immaculate Conception Parish, Marlborough

St. Paul Parish, Hingham

St. Patrick Parish, Brockton



"Be who God meant you to be, and you will set the whole world on fire."

-St. Catherine of Siena
patroness of the Lay Dominicans

TO PRAISE, BLESS, PREACH



Is God calling you to be a **LAY DOMINICAN?**



Meetings take place
once a month
at St. Ann's Hall

Visitors welcome.
Contact Mikayla Dalton, O.P.
(fraternity president)
for more information:
mikayla.v.dalton@gmail.com



Readings To-Go!

21st Sunday in Ordinary Time
August 24, 2025

Scan QR code to see
this week's readings!

KNIGHTS OF COLUMBUS SILVER ROSE PRAYER SERVICE



**Wednesday, August 27th
St. Ann's
7:00 PM**

Join us for a beautiful evening of prayer and devotion as we honor Our Lady of Guadalupe through the Knights of Columbus Silver Rose program.

Each year, Silver Roses are carried by Knights across North America, from Canada to Mexico, to reaffirm our commitment to the sanctity of life and to honor the Blessed Virgin Mary. This pilgrimage symbolizes unity, devotion to life, and international brotherhood among Knights and parish communities.

Come pray with us for the protection of life, the promotion of peace, and the intercession of Our Lady.

*

THE MEANING OF THE SILVER ROSE

The Silver Rose honors Our Lady of Guadalupe, Patroness of the Americas and Protectress of the Unborn.

DEVOTION TO MARY

COMMITMENT TO LIFE

INTERNATIONAL SOLIDARITY OF THE KNIGHTS

*

All parishioners and guests are warmly invited.

RING CAM

Today planning a 5-year old's birthday party involves more than channeling all that energy if we have to take it inside. So many kids have special food requirements that menu consultation is also a given. Fruit chunks on wood skewers a current favorite this summer. Given the logistics, a short list of the "invited" can be preferred! What about that voice from the crowd in today's gospel shouting out, "*Lord, will only a few people be saved?*" (Lk 13:23). Is that anxiety over what God's banquet could provide? Or over whether those invited will show up?

Jesus doesn't consult responses to Evite email. Instead, he challenges the questioner. Look to yourself. The preparation sounds ominous: Look for the "narrow gate" to salvation. (At age 5 bringing a present which they would so love to have themselves.) Why? Because there is a "door closed" for this party. In today's house with Ring camera surveillance, the master can lock/unlock the gate from a smart phone. No shouting through the locked door! Casual familiarity with the host isn't enough to get into this party. With some humor, Jesus says that when the party video gets posted, "evil doers" will be weeping and wailing – eternally (vv. 27-28).

Does that mean God's banquet will be sparsely attended? Hardly. Jesus concludes by supplementing references to those ancestral witnesses of faith with promises of salvation from Isaiah 66:18-21. The Evite list goes out to all the peoples in the world, not just Israel or those making their way to Jerusalem with Jesus. For that audience, opinions were divided. Some thought that Jews spread throughout the world would bring "the nations" to worship God as source of peace and justice. Others thought the problem was lack of serious commitment to holiness. Only an elite minority who obeyed Mosaic Law scrupulously would get in. Jesus is on the universalist side. He adds a reminder that God's salvation reverses human categories. The lowly, invisible people will be at the head table.

Pheme Perkins, Ph.D.
Joseph Professor
Of Catholic Spirituality
Boston College





LABOR DAY
★ ★ ★ ★
9 AM MASS
ST. ANN CHURCH

SEPT 1, 2025

PARISH OFFICE & ST. ZEPHERIN CAMPUS IS CLOSED
FRIDAY, AUGUST 29TH & MONDAY, SEPTEMBER 1ST

THE TABERNACLE CANDLES



CONTACT THE
PARISH OFFICE
FOR MORE
INFORMATION
ON HOW YOU
CAN HONOR THE
MEMORY OF A
LOVED ONE.
508-650-3545

ST. ZEPHERIN CEMETERY
Bent Avenue-Wayland

PLOTS & NICHES AVAILABLE



Take advantage of the current
low prices!

Call the Parish Office 508-650-3545
for more information.

A PLACE OF SANCTUARY



COLUMBARIUM

| | | | | | |
|------------|------------|----|----|------------|------------|
| A1 SOLD | A2 SOLD | A3 | A4 | A5 SOLD | A6 SOLD |
| B1 | B2 | B3 | B4 | B5 | B6 |
| C1 | C2 | C3 | C4 | C5 | C6 |
| D1 | D2 | D3 | D4 | D5 | D6 |



BATH REMODEL

Safety. Style. Stress-Free Installation.

CALL NOW
833.791.9968

SPECIAL OFFER

Waiving All Installation Costs!

Add'l terms apply. Offer subject to change and vary by dealer.
Expires 9/28/25.



LeafFilter
GUTTER
PROTECTION

End Cleaning Out Gutters!

Zero Clogged Gutters Guaranteed

2025 Summer
Home Protection Event!

LIFETIME
TRANSFERABLE
WARRANTY



Without LeafFilter

With LeafFilter

Promo Code: 285

CALL **877-319-0949**
FOR A **FREE INSPECTION!**

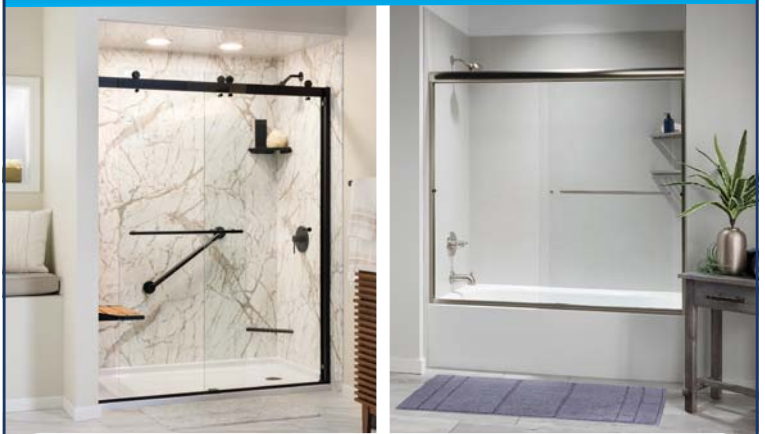
Limited time only!*

Bonus offer!*

75% OFF + \$250
Installation Discount

*\$250 discount (no cash value) is for same-day signing only. This offer cannot be combined with any other promotion or offer. No obligation estimate valid for 1 year. +See representative for full warranty details. See website for all license and registration numbers. AR 366920925, AZ ROC 344027, CA 1035795, CT HIC 0671520, DC 420223E+11, FL CBC056678, IA C127230, ID RCE-51604, LA 559544, MA 213292, MD MHIC111225, MI262300331, 262300330, 262300329, 262300328, 262300318, 262300173, MN IR810524, NT 2661922, ND 47304, NE 50145-24, 50145-23, NJ 13VH13285000, NM 408693, NV 86990, OR 218294, PA PA179643, RI GC-41354, TN 10981, UT 10783658-5501, VA 2705169445, VT 174.0000871, WA LEAFLH-763PG, WI No. 537-DCFRR WV WV056

The Bath or Shower You've Always Wanted IN AS LITTLE AS 1 DAY



**\$1000
OFF***

OR

\$1500 OFF when financing
with remodelingloans.com™

0% Interest
For 18 Months™

OFFER EXPIRES 9/30/2025

Military & Senior Discounts Available



CALL NOW!

(844) 300-2419

*Includes labor and product; bathtub, shower or walk-in tub and wall surround. This promotion cannot be combined with any other offer. Other restrictions may apply. This offer expires 9/30/2025. Each dealership is independently owned and operated. **Third party financing is available for those customers who qualify/Participating dealers only. See your dealer for details. ©2025 Bath Concepts Industries.

Get started with
3 months free*



WeightWatchers
weightwatchersoffer.com/53

*With select plan purchase. Restrictions apply.

CONNELL

ROOFING • SIDING • GUTTERS



ROOFING | SIDING | GUTTERS | WINDOWS & DOORS

Servicing Metro-West Boston & Cape Cod, Massachusetts

Connell Roofing, based in Wrentham, MA, has been providing top-tier roofing services to both residential and commercial property owners for over 60 years. Their commitment to quality, integrity, and customer satisfaction has established them as a leading roofing company in Massachusetts.

REQUEST ESTIMATE: 781-444-7577

www.connellroofing.com

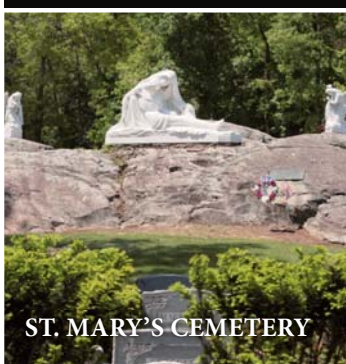
LUGAWAY

PREMIER REMOVAL SERVICE 617-893-9824

Steven Conroy - Owner

www.lugaway.com | info@lugaway.com

- Home Cleanouts
- Garage Cleanouts
- Office Cleanouts
- Storage Unit Cleanouts
- Estate Cleanouts
- Furniture
- Appliances
- Televisions
- Yard Waste
- Construction Debris
- Demolition



ST. MARY'S CEMETERY

St Mary's Cemetery in Needham, founded in the 1870's, is the parish cemetery of Mary Immaculate of Lourdes. The Cemetery is a reverent resting place for those awaiting reunion with the Risen Lord. The decision to pre-plan and purchase interment rights is a responsible and thoughtful gesture, sparing loved ones the stress of making difficult decisions during a time of grief and loss.

For information, call the cemetery staff at Mary Immaculate of Lourdes Church at **781-235-1841**.
St. Mary's Cemetery | 1 Wellesley Avenue, Needham, MA 02494

SAVE \$350 when you transform your patio into an outdoor oasis.

SunSetter
America's #1 Awning

- Instant shade—at the touch of a button.
- Enjoy more quality time with family and friends.
- Up to 10-Year Limited Warranty.

Call 1-844-429-8765 now to **SAVE \$350 TODAY!**



America's #1 Awning!

Our windows will **lower your utility bill** and keep your home comfortable.



WINDOW NATION

BUY 4 WINDOWS GET 4 FREE*

Offer ends 9/30/2025

\$0 down payment | \$0 monthly payment | 0% interest rate
for 2 years

Offer ends 9/30/2025

▼ Schedule your FREE quote! ▼

855.919.2625

*Terms apply

AD SPACE AVAILABLE

617-779-3771

\$349.99 | **FREE**

TEETH WHITENING & COMPREHENSIVE CONSULTATION—

VALUED AT \$880 | VALUED AT OVER \$1200

Mention this advertisement for the discount.

Barry Bessler, DMD • 508-358-2336

Visit our website: www.besslerkang.com

30 Boston Post Rd., Wayland

COSMETIC & GENERAL DENTISTRY | SMILE MAKEOVERS

FULL MOUTH RECONSTRUCTION & MORE

BESSLER & KANG, DMD

PROSTHODONTISTS

REVIEWS:  

"He has risen." Matt 28:6

H3 HAND HEWN BUILDERS

Quality Craftsmanship You Can Trust

Servicing Concord & Surrounding Communities

- Licensed & Insured -

JOSEPH FEENEY

617-824-4643

AD SPACE AVAILABLE

617-779-3771

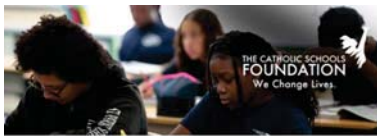
COOK'S AUTOMOTIVE



Auto Repair | Maintenance | Oil Changes | Tires

508-358-7760

338 Boston Post Rd. Wayland



CHANGE LIVES TODAY!

The Catholic Schools Foundation is the largest K-12 scholarship-granting organization in the state of Massachusetts. Make a difference in the lives of students in need by providing them with a high-quality Catholic education.

Learn how you can make a difference at:
www.csfboston.org



SUPPORT STUDENTS TODAY!



J & E ACCOUNTING & TAX SERVICES INC
ASH WASILIDAS, CPA
Accounting & Business and Personal Tax Services



945 Concord Street, Suite 109 Framingham, MA 01701
Phone: 617-462-6653
Email: info@ashcpa.com Website: www.ashcpa.com

FLEURY
FINISH
CARPENTRY

We offer a variety of commercial and residential services from custom finish carpentry to full kitchen remodels

MA GC License and Fully Insured
718-708-9249
www.fleuryfc.com

Fleury Finish Carpentry is owned and operated by husband and wife team, Vinny and Adele Fleury.

JF
JASON FOLEY
ELECTRICIAN

FULLY LICENSED & INSURED

857-312-1149

jason.foley.electrician@gmail.com



Ron's TIRE & SERVICE Since 1992
Tires • Auto Repair
We are here when you need us

Large Inventory of All Major Tire Brands & Sizes



635 Waverly St. Framingham
www.ronstire.com | 508-872-2266



Architectural Design | Planning | Construction

**DESIGNER CONSTRUCTION
MANAGEMENT GROUP INC**

We Craft Your Vision!

Call us today

857-233-1293

www.designerconstructiongroup.com



**SENIOR
CARE
OPTIONS**
IN FRAMINGHAM, MA



CARMEL TERRACE
ASSISTED LIVING
ST. PATRICK'S MANOR
NURSING & ROSARIO CENTER
FOR SHORT-TERM REHABILITATION



CONTINUUM OF CARE ON ONE CAMPUS, WHERE TWO
OUTSTANDING HOMES WORK TOGETHER TO MEET
EVOLVING NEEDS — THE DIFFERENCE IS LOVE.

INDEPENDENT &
ASSISTED LIVING
CARMEL TERRACE
950-400-7122
WWW.CARMELTERRACE.ORG/LOVE-RES
CENTRAL STREET FRAMINGHAM, MA 01701

**AD SPACE
AVAILABLE**

617-779-3771



**Tamburrini
Painting
Inc**

- Residential | Commercial
- Interior | Exterior
- Deck | Porches
- Pressure Washing
- Cabinet Refinishing



scan for all services

Jamie Tamburrini
617-694-8001

LAVELLE & CO. PAINTING
CONTRACTORS

Trusted Painting & Construction Services

617-787-1907 • www.lavelleco.com



K & S Auto Inc.



**A BUSINESS BUILT ON
QUALITY AND HONESTY**

67 Beaver St. Framingham
508-872-9452
www.kandsauto.com

PAUL MACRINA
Electrical

Your family electrician.

(508) 359-7954

www.PaulMacrina.com



**AD SPACE
AVAILABLE**

617-779-3771

**It's not just a generator.
It's a power move.**

Receive a free 5-year warranty
with qualifying purchase*
- valued at \$535.

Call 617-841-4985 to
schedule your free quote!

GENERAC

*Terms and Conditions apply.

Be prepared before the next power outage.



**WAYLAND
AUTOMOTIVE**

Wayland Automotive
services all makes and
models

322 Commonwealth Rd. Wayland
508-653-6230 • www.waylandauto.com



**LICENSED
& INSURED
ROOFER**

**UNIVERSAL
ROOFING**

**WE'VE
GOT YOU
COVERED**

Residential Roofing • Commercial Roofing
Siding • Skylight Installation
Gutter Installation • Roof Replacement
Metal Roofs • Asphalt Shingle Roofs
Rubber Roofs

508-922-8108 | www.universalroofingma.com