

20TH SUNDAY

IN ORDINARY TIME

Brothers and sisters: Since we are surrounded by so great a cloud of witnesses, let us rid ourselves of every burden and sin that clings to us and persevere in running the race that lies before us while keeping our eyes fixed on Jesus, the leader and perfecter of faith.

(Hebrews 12:1-2)



The Assumption of the Virgin by Francesco Botticini

Welcome to
Good Shepherd Parish
August 17, 2025

GOOD SHEPHERD PARISH VISION STATEMENT

Good Shepherd Parish strives to be a vibrant, welcoming community where every person can experience the Father's love. Through the Gospel proclamation, prayer, and joyous sacramental celebration, Good Shepherd Parish will inspire parishioners to discern and live out their vocations and to actively evangelize the world. As we bear witness to the Risen Christ, Our Lord and Savior, we aspire to serve our parish community. We will seek to welcome home the new, the lost, and the disheartened by using the gifts and fruits of the Holy Spirit..

GOOD SHEPHERD PARISH MISSION STATEMENT

We, the Roman Catholic community of Good Shepherd Parish, strive to be a living sign of Christ's love in and for the world.

In response to our Baptismal call, nourished by the Eucharist and guided by the values of the Second Vatican Council, we seek to continue the mission of Jesus Christ by welcoming, supporting and guiding all through prayer, sacramental celebration, service and education.

PARISH STAFF

Pastor:
Fr. Laurence "Ren" Tocci
Ext. 14
frren@goodshepherdwayland.org

Senior Priest in Residence:
Rev. Austin H. Fleming, M.A.
fraustin@goodshepherdwayland.org
Fr. Fleming's daily blog:
ConcordPastor.blogspot.com

Permanent Deacon:
Deacon Colm McGarry Ext. 22
Director of Youth Ministry
cmcgarry@goodshepherdwayland.org
youthministrywayland@gmail.com

Finance & Operations Manager :
Liliana Lucas Ext. 18
llucas@goodshepherdwayland.org

Faith Formation Director (K-5):
Debora S. Robertson Ext.12
dspairani@goodshepherdwayland.org

Director of Music Ministry:
Jay Maenhout Ext. 33
End-of-Life Doula
jmaenhout@goodshepherdwayland.org

Director of My Brother's Table:
Laurie Hojlo
happyhojlos@verizon.net

Parish Nurse:
Jean Gifford, RN, BSN, PMH-BC Ext. 25
End-of-Life Doula
jgifford@goodshepherdwayland.org

Communications & Sacramental Records:
Kat Holmstrom Ext. 13
kholmstrom@goodshepherdwayland.org

Administrative Assistant:
Vina Sousa Ext. 10
vsousa@goodshepherdwayland.org

Facilities Staff:
Steve McCarthy & Julio Pazmino Ext. 18



ST. ANN CHURCH, 134 COCHITUATE RD, WAYLAND, MA



ST. ZEPHERIN CHURCH, 99 MAIN ST, WAYLAND, MA

Mass Times

Saturday, 4:00 PM St. Ann
Sunday, 8:30 AM St. Zepherin
Sunday, 10:30 AM St. Ann

Confession

Saturday, 3:00 –3:45 PM
St. Ann
(or by appointment)

Weekday Masses

Monday—Tuesday
9:00 AM St. Ann
Wednesday—Friday
9:00 AM St. Zepherin

Mass Intentions

SUNDAY, AUGUST 17
10:30 AM
PEOPLE OF
GOOD SHEPHERD PARISH

THURSDAY, AUGUST 21
9:00 AM
MILLIE CHOINSKI &
RUTH (CHOINSKI) FORNES

PARISH OFFICE:
(508) 650—3545
99 MAIN STREET
WAYLAND, MA
HOURS:
MON—THURS
9 AM—3 PM
FRI
9 AM—12 NOON

Parish Calendar

MONDAY, AUGUST 18
10 AM—2 PM
NURSE JEAN
PARISH CENTER

THURSDAY, AUGUST 21
NURSE JEAN UNAVAILABLE-
PARISH NURSE EVENT IN
BRAINTREE

SUNDAY, AUGUST 24
9:30 AM
COMBINED COFFEE & DONUTS
BY
HOSPITALITY COMMITTEE
AND
BLOOD PRESSURE CLINIC WITH
NURSE JEAN
PARISH CENTER

Four Loves (Part Two) . . .

The thing I liked the most about the theatre was the comradeship. People thrown together in a shared task, working toward a common goal, develop a certain affinity for each other. While I was a member of a repertory theatre troupe, with the same corps of people working together on every show, I was part of a ready-made neighborhood. I never lacked for conversation or someone to grab a drink with after a late night of hanging lights.

I don't talk to those people anymore now. Not that I had any kind of a falling-out with them, I haven't lost touch with them by choice, but when we no longer were mounting productions together, we stopped reaching out to each other. One of the guys I would have called my best friend from my theatre days moved to Florida, and whenever I would go down there to visit my parents, I'd try to get together with him, but he never showed any real interest in clearing time in his calendar for me. We no longer were doing shows together, so he lost incentive to hang out. We may have been buddies at one time; but it became clear to me that we never were friends.

Friendship—real friendship—the love between true friends, is the bond of shared values. If affection is made of soft, faded cotton, friendship is forged of iron. The Ancient Greeks called this form of love *philia*. We see it in the name of the City of Brotherly Love: *Philadelphia*.

But it's not really brotherly, in any literal sense. The love between brothers would be affection. But the love of friendship is the bond that makes people brothers by choice, regardless of their parentage. C.S. Lewis says that friendship is the least necessary of the loves because it's not rooted in nature. There's a biological urge for erotic love, and an ingrained comfort in affection; but the bond of friendship can't trace itself back to any natural impulse. Consequently, it's the hardest to maintain, and takes the most deliberate effort to develop.

Lewis identifies *philia* as beginning from the recognition of a common interest, or a common point-of-view. Companionship happens when people are put together in a common activity (like mounting a theatre production). But a friendship arises out of this companionship when two (or more) of the people involved discover that they share some taste or insight that each had thought unique only to him- or herself. It's what makes individual souls kindred spirits.

And for precisely this reason, *philia* is the most human of the loves. It endures beyond companionship, beyond shared undertakings, to a connection of the soul. The things I place priority on, what I see as having ultimate meaning in life, my deepest tastes and surest

convictions—these things friends hold in common. It's the stuff of real friendship, *philia*, and they are the mercurial traits that are so unique to the human creature. It's what we mean by personality.

Practically by definition, friendship has a certain exclusiveness to it—not only in the sense that it doesn't admit those people one doesn't call friends, but also because the bond between friends is unique. Even if I have three true friends, my friendship with one is completely different from my friendship with another, and different again from the friendship I share with the third. Each friend brings out some aspect of my personality that no other person touches upon, and I bring out something in each of my friends that no one else can discover in that person. This isn't a matter of being a chameleon, as if I'm changing the persona I project to suit the present company. It's a genuine connection that can only be made by two unique individuals who share that particular bond. The love between true friends proves what Pope Benedict XVI often observed: that a person only discovers who (s)he is in relation with others.

Sad to say, friendships of this sort are becoming less and less common today. The more we live our lives in episodes, splitting off from people as we each go our own way, the less time we take to forge these deep and durable friendships. And I think a real danger of this is that we end up with an increasingly vaguer and shallower sense of our own personal values. I don't know if this is a consequence of our diminished friendships, or if it's what causes this poverty of *philia*. Whichever the case, studies consistently show that we're the loneliest generation on record in American history.

As vital as *philia* is for us as human persons to share with each other, it's also—marvelously—the love that Jesus extends to us. In becoming a human being like us and living among us, Jesus brings together the adoration of the creature worshipping his God with the intimate friendship of *philia*. "I no longer call you slaves," He says in John's Gospel, "because a slave doesn't know what his master is doing. I call you friends." In the Incarnation, God shares our humanity; and He offers us the possibility of sharing in His innermost life through friendship with God. I would humbly suggest that entering into this friendship is the best first way to trace our way back into forming *philia* love with others. Loving God enables us to love our neighbor.



~ Fr. Ren

Catechist Meeting Grades K-9

Tuesday, August 26th
at St. Zepherin Parish Center
from 7:30-8:30 pm.

OR

Tuesday, September 2nd
at St. Ann Hall
from 7:30-8:30 pm.



*Prayer
Requests*



St. Martin
de Porres,
pray for us!



GOOD SHEPHERD PARISH

PRAYER LINE:

GSPPRAYERS@GMAIL.COM

OR CALL THE NEW LINE
TO LEAVE A MESSAGE:
(508) 650 - 3545 EXT. 11

Parent Meeting

Thursday, Aug. 28th

On Zoom

From 7:00-8:00pm



READINGS & OBSERVANCES 2025 YEAR C

20TH SUNDAY ORDINARY TIME Aug 17	Jer 38:4-6, 8-10/Ps 40:2, 3, 4, 18/Heb 12:1-4/Lk 12:49-53
MONDAY Aug 18	Jgs 2:11-19/Ps 106:34-35, 36-37, 39-40, 43ab+44/Mt 19:16-22
TUESDAY Aug 19	St. John Eudes, priest Jgs 6:11-24a/Ps 85:9, 11-12, 13-14/Mt 19:23-30
WEDNESDAY Aug 20	St. Bernard, abbot and doctor of the Church Jgs 9:6-15/Ps 21:2-3, 4-5, 6-7/Mt 20:1-16
THURSDAY Aug 21	St. Pius X, pope Jgs 11:29-39a/Ps 40:5, 7-8a, 8b-9, 10/Mt 22:1-14
FRIDAY Aug 22	The Queenship of the Blessed Virgin Mary Ru 1:1, 3-6, 14b-16, 22/Ps 146:5-6ab, 6c-7, 8-9a, 9bc-10/Mt 22:34-40
SATURDAY Aug 23	St. Rose of Lima, virgin Ru 2:1-3, 8-11; 4:13-17/Ps 128:1b-2, 3, 4, 5/Mt 23:1-12
21ST SUNDAY ORDINARY TIME Aug 24	Is 66:18-21/Ps 117:1, 2/Heb 12:5-7, 11-13/Lk 13:22-30

Pilot Bulletins



BAKED GOODS &
COOKIE DECORATING, etc.
DONATIONS OF ITEMS WELCOME!



SAVE THE DATE!

You may contact Janie
for more details!
(508) 653-3423



KNITTERS' CRAFT FAIR

October 18, 2025

St. Zepherin Parish Center

10 AM - 2 PM

Saturday!

Proceeds will benefit our graduates
as they further their studies in either
college or trade school!

Parish Picnic

Enjoy!

SUNDAY, SEPTEMBER 14

Beginning after the 10:30 AM Mass at St. Ann!

ALL ARE WELCOME!



Let's celebrate our community
with a Parish Appreciation Picnic!

goodshepherdwayland.org

GOOD SHEPHERD PARISH

PARISH NURSE

Jean Gifford, RN, BSN, PMH-BC

End-of-Life Doula

jgifford@goodshepherdwayland.org
(508) 650-3545 ext. 25

COMPLIMENTARY SERVICE

FOR YOU,
OUR PARISH, &
OUR COMMUNITY

- Blood Pressure checks
- Prescription medication review
- Monthly medical presentations
- Referrals
- Remembrance ministry
- Walk with her!



Monday, August 18

10 AM - 2 PM

Thursday, August 21

Will Not Be Available -

Parish Nurse Event in Braintree

Monday, August 25

10 AM - 2 PM

Thursday, August 28

10 AM - 2 PM

1 PM walk! meet on the plaza

Blood Pressure Clinic

Sunday, August 24

Parish Center 9:30 AM

Monday, September 1

LABOR DAY

PARISH OFFICE &

ST. ZEPHERIN CAMPUS CLOSED

*The Pleasure of Your Company is
requested at the Parish Center
after the 8:30 Mass on
August 24th for:*



**Coffee and Donuts
with the Hospitality
Committee**

and:

**Blood pressure
checks
with Nurse Jean**



All are welcome!

TIPS FROM THE
Stethoscope!

Back to school and work is fast
approaching, remember:
Get that summer reading started.
Prepare for the new or back to
school adventures.

Parents, it's okay to cry as your kids
are heading off to school.

If overwhelmed, please seek help.
As Always, be kind to yourself.

If I can help, please call, email or
stop by the Parish Center.

Be well,
Nurse Jean

jgifford@goodshepherdwayland.org

508-650-3545 ext 25

MY BROTHER'S
TABLE

AT GOOD SHEPHERD PARISH

GOOD SHEPHERD
PARISH LIBRARY

*located at St. Ann Church
across from the confessional*

**Please feel free to come
visit our bookshelves and
check out a book!**

For your convenience, the library
will be accessible
Mondays, Tuesdays & Thursdays
from 9:30 AM - 3 PM
Saturdays from 10 AM - MASS time



Glo-ry! Glo-ry to God in the high-est. Glo-ry!

Glo-ry to God in the high-est, and on earth peace to peo-ple of good will. We praise you, we bless you, we a-dore you, we glo-ri-fy you. we give you thanks for your great glo-ry.

Lord God, heav-en-ly King, O God, al-might-y Fa-ther. Lord Je-sus Christ, On-ly Be-got-ten Son, Lord God, Lamb of God, Son of the Fa-ther, you take a-way the sins of the world, have mer-cy on us. you take a-way the sins of the world, re-ceive our pray-ers: you are seat-ed at the right hand of the Fa-ther. have mer-cy on us. For you a-lone are the Ho-ly One, you a-lone are the Ho-ly One, you a-lone are the Most High. Je-sus Christ, with the Ho-ly Spi-rit, in the glo-ry of God the Fa-ther. Glo-ry!

Glo-ry to God in the high-est. Glo-ry! Glo-ry to God in the high-est, and on earth peace to peo-ple of good will. A-men.

Lyrics: 2006 GCH

Ed Bolduc,
Music: 2011 GCH

GOSPEL ACCLAMATION



Al-le-lu - ia, al-le-lu - ia, al-le-lu - ia.

Al-le-lu - ia, al-le-lu - ia, al-le-lu - ia.

Music: Mass of Saint Ann, Ed Bolduc, © 2011, World Library Publications, a division of GIA Publications, Inc.

HOLY, HOLY, HOLY



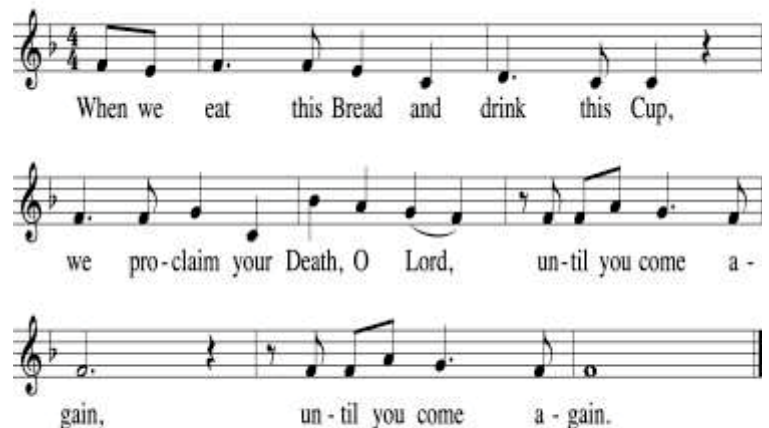
Ho-ly, Ho-ly, Ho-ly Lord God of hosts.

Heav-en and earth are full of your glo-ry. Ho-san-na in the high-est. Bless-ed is he who comes in the name of the Lord. Ho-san-na, ho-san-na in the high-est. Ho-san-na, ho-san-na in the high-est.

Text: ICEL, © 2010

Music: Mass of Saint Ann, Ed Bolduc, © 2011, World Library Publications, a division of GIA Publications, Inc.

MEMORIAL ACCLAMATION B

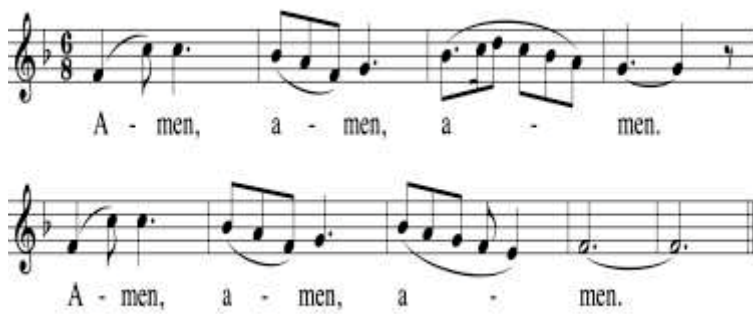


When we eat this Bread and drink this Cup, we pro-claim your Death, O Lord, un-til you come a-gain, un-til you come a-gain.

Text: ICEL, © 2010

Music: Mass of Saint Ann, Ed Bolduc, © 2011, World Library Publications, a division of GIA Publications, Inc.

AMEN



Music: Mass of Saint Anne, Ed Bolduc, © 1992, 2011, World Library Publications, a division of GIA Publications, Inc.

LORD, COME TO MY AID!

Psalm 40

Tony Alonso



The English translation of the Psalm Response from the *Lectionary for Mass* © 1969, 1981, 1997, International Commission on English in the Liturgy Corporation. All rights reserved.
Music Copyright © 2012 by GIA Publications, Inc. • All Rights Reserved • Printed in U.S.A.
7404 S. Mason Ave., Chicago, IL 60638 • www.giamusic.com • 800.442.1358

Verses:

1. I waited, I waited for the LORD,
And he stooped down to me.
He heard my cry,
He heard my cry.
2. He drew me from the deadly pit,
From the miry clay.
He set my feet upon a rock,
Made my footsteps firm.
3. He put a new song into my mouth,
Praise of our God.
Many shall see and fear
And shall trust in the LORD.
4. Wretched and poor though I am,
The Lord is mindful of me.
You are my rescuer, my help;
O my God, do not delay.

SCAN ME

Readings To-Go!

20th Sunday in Ordinary Time
August 17, 2025

Scan QR code to see this week's readings!

LAMB OF GOD



Music: Mass of Saint Anne, Ed Bolduc, © 1992, 2011, World Library Publications, a division of GIA Publications, Inc.

STRENGTH FOR THE JOURNEY

Michael John Peter



Annual Missionary Co-Operative Appeal August 16 & 17

As part of the annual Missionary Co-Operative Program, Father Leonard Zifac of Benedict XVI Institute for Africa will speak at all our Masses this weekend about The Society of St. Peter Apostle, one of the four Pontifical Mission Societies represented here in the Archdiocese of Boston. Father Leonard will share stories of his experiences of the mission Church, where seminaries are sometimes turning away young men who want to say "Yes!" to a call from God but cannot because of their own poverty and that of their diocese. Father Leonard will help us build a spiritual connection to others whose daily lives may be very different from our own.



The Society of St. Peter Apostle is the official mission agency of the Catholic Church supporting seminarians with annual scholarships, support for their teachers, and help for the crumbling infrastructure of mission seminaries. Envelopes are in the pews for this weekend's second collection. You can also take the envelope home to mail in a check made out to The Society of St. Peter Apostle, visit <https://www.propfaithboston.org/donate-to-the-society-of-st-peter-apostle>. All proceeds from the appeal will enable the Society to support seminarians in over 1,100 mission territories worldwide.



KNIGHTS OF COLUMBUS SILVER ROSE PRAYER SERVICE



Wednesday, August 27th
St. Ann's
7:00 PM

Join us for a beautiful evening of prayer and devotion as we honor Our Lady of Guadalupe through the Knights of Columbus Silver Rose program.

Each year, Silver Roses are carried by Knights across North America, from Canada to Mexico, to reaffirm our commitment to the sanctity of life and to honor the Blessed Virgin Mary. This pilgrimage symbolizes unity, devotion to life, and international brotherhood among Knights and parish communities.

Come pray with us for the protection of life, the promotion of peace, and the intercession of Our Lady.

—*—

THE MEANING OF THE SILVER ROSE

The Silver Rose honors Our Lady of Guadalupe, Patroness of the Americas and Protectress of the Unborn.

DEVOTION TO MARY

COMMITMENT TO LIFE

INTERNATIONAL SOLIDARITY OF THE KNIGHTS

—*—

All parishioners and guests are warmly invited.

FIRE ZONE

What happened to that "peace on earth" heralded by the angels at Jesus' birth? Today's gospel seems a thundering contradiction with Jesus' words, "*Do you think that I have come to establish peace on earth? No, I tell you, but rather division,*" (Lk 12:51).

Apparently, the fire that Jesus desires to cast on the earth is not the major "new technology", fire, that enabled human evolution from cooked food to the latest high-tech metallurgy. It's the fire of war, which in his world was the fate of cities that did not surrender to invading armies. With Babylonian forces threatening Judah, the prophet Jeremiah counseled capitulation. Leaders of a pro-Egypt resistance faction might have silenced his traitor's voice but for a timely intervention by an Ethiopian serving in the king's court (Jer 38:4-10).

Within a year the Babylonians will overrun Jerusalem, march its people into exile, and totally destroy God's temple (587 BCE). Jesus predicts a similar fate for Jerusalem and its glorious, mega-temple complex (Lk 19:41-44). On the way to execution on false charges of stirring up rebellion against Rome, Jesus tells the women of Jerusalem not to mourn for him, but for what they will suffer in those days (Lk 23:27-31). So, we have it on Jesus' authority not to expect super-powers to bring world peace. Instead, the destructive fires of war will keep erupting.

Why is Jesus straining toward his fated death in Jerusalem, "...how great is my anguish until it is accomplished,"? Readers still have another seven chapters before the story line has Jesus enter the city. It's easy to forget the prophecy by Simeon when Jesus' parents brought their baby to the temple, "...destined for the fall and rise of many... a sign opposed... the inner thoughts of many revealed..." (2:34-35). Perhaps, Jesus anticipates confronting the powerful in Jerusalem to dramatize contradictions in their thoughts and actions. On the cross, one violent rebel will repent, turn to Jesus and be promised entry into the "fire free zone", paradise (Lk 23:43).

Pheme Perkins, Ph.D.
Joseph Professor
Of Catholic Spirituality
Boston College



FY2025 Financial Reports as of June 2025

We are pleased to report a Net Income of \$75,534 from the fiscal year 2025. Both, the operating & non-operating financial accounts reflected a positive performance, including My Brother's Table Food Pantry.

In the last fiscal year, the offertory reached near 99% of the its budget (\$820,000). We are immensely grateful to all of you for sharing with our parish your God-given time, talent and treasure.

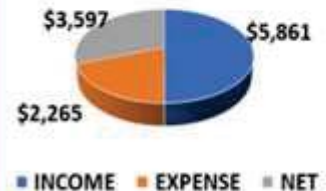
PARISH: FY2025 (July 2024 - June 2025)

Actual vs. Budget Performance

Account	Actuals	Budget 2025	Variance \$
Income	\$ 998,603	\$ 967,900	\$ 30,703
Expense	\$ 929,344	\$ 937,900	\$ (8,556)
Net Operating Income (Loss)	\$ 69,259	\$ 30,000	\$ 39,259
Non-Operating Income	\$ 23,897	\$ -	\$ 23,897
Non-Operating Expense	\$ 17,622	\$ 30,000	\$ (12,378)
Net Non-Operating Income (Loss)	\$ 6,275	\$ (30,000)	\$ 36,275
NET INCOME (LOSS)	\$ 75,534	\$ -	\$ 75,534

Note: A complete end of FY2025 report will be published in the fall

My Brother's Table June 2025 Performance



ALL Financial Activities thru June 2025

INCOME	EXPENSE	YTD NET
\$198,984	\$143,337	\$55,647

CEMETERY: FY2025 (July 2024 - June 2025)

Actual vs. Budget Performance

Account	Actuals	Budget 2025	Variance \$	FY2026 BUDGET
Income	\$ 11,614	\$ 23,000	\$ (11,386)	\$ 17,000
Expense	\$ 16,450	\$ 23,000	\$ 6,549	\$ 17,000
Net Operating Income (Loss)	\$ (4,836)	\$ -	\$ (4,837)	\$ -
Non-Operating Income	\$ 2,458	\$ -	\$ 2,458	\$ -
Non-Operating Expense	\$ -	\$ -	\$ -	\$ -
Net Non-Operating Income (Loss)	\$ 2,458	\$ -	\$ 2,458	\$ -
NET INCOME/(LOSS)	\$ (2,378)	\$ -	\$ (2,378)	\$ -

FY2025 BUDGET

\$820,000

**Actual
\$807,770
as of June
2025**



Thanks to 116 parish families, as of August 4th, we have raised **50%** (\$46,016) of our 2025 Catholic Appeal Goal of **\$92,100**.

We are confident that with your kind financial support, our parish can reach and surpass our goal as we have done in past years.

To support the Catholic Appeal, please take a pledge from the entrance of the church, fill it out and return it to the church or mail it to the Parish Office, 99 Main St., Wayland MA 01778 at your earliest convenience.

To make a gift online scan the QR code. Thank you for your support!



Thank You
for
GIVING
GENEROUSLY
to support our
Parish Mission.

Giving Method	Actual Offertory	%
Mail	\$ 394,405	49%
Bags	\$ 207,000	26%
Online	\$ 206,364	26%
TOTAL >>	\$ 807,770	100%

The FY2026 parish budget shown here includes an Offertory budget of \$815,000. We kindly ask you to help us build upon the positive trend of generosity observed in the past years. Your support is much appreciated and needed to serve the families of Good Shepherd Parish.

Please receive our enormous gratitude for your faithful and ongoing financial support. *Thank You...Thank You So Much!!*

DONATE ONLINE AT GOODSHEPHERDWAYLAND.CHURCHGIVING.COM (USE QR CODE), BY MAIL, OR BY USING YOUR BANK BILL PAYMENT SERVICE. WE CAN HELP YOU CHOOSE THE BEST GIVING SYSTEM THAT WORKS FOR YOU. PLEASE CALL LILIANA AT 508-650-3545, EXT. 18.



Parish Budget: FY2026 (July 2025 - June 2026)

Account	Budget
Income	\$ 951,400
Expense	\$ 956,400
Net Operating Income (Loss)	\$ (5,000)
Non-Operating Income	\$ 5,000
Non-Operating Expense	\$ -
Net Non-Operating Income (Loss)	\$ 5,000
NET INCOME (LOSS)	\$ -



BATH REMODEL

Safety. Style. Stress-Free Installation.

CALL NOW
833.791.9968

SPECIAL OFFER

Waiving All Installation Costs!

Add'l terms apply. Offer subject to change and vary by dealer.
Expires 9/28/25.



LeafFilter
GUTTER
PROTECTION

End Cleaning Out Gutters!

Zero Clogged Gutters Guaranteed

2025 Summer
Home Protection Event!

LIFETIME
TRANSFERABLE
WARRANTY



Without LeafFilter

With LeafFilter

Promo Code: 285

CALL **877-319-0949**
FOR A **FREE INSPECTION!**

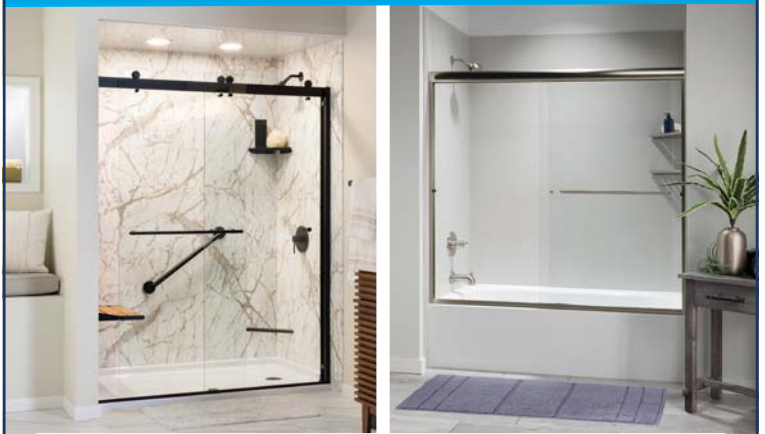
Limited time only!*

Bonus offer!*

75% OFF + \$250
Installation Discount

*\$250 discount (no cash value) is for same-day signing only. This offer cannot be combined with any other promotion or offer. No obligation estimate valid for 1 year. +See representative for full warranty details. See website for all license and registration numbers. AR 366920925, AZ ROC 344027, CA 1035795, CT HIC 0671520, DC 4.20223E+11, FL CBC056678, IA C127230, ID RCE-51604, LA 559544, MA 213292, MD MHIC111225, MI262300331, 262300330, 262300329, 262300328, 262300318, 262300173, MN IR810524, MT 2661922, ND 47304, NE 50145-24, 50145-23, NJ 13VH13285000, NM 408693, NV 86990, OR 218294, PA PA179643, RI GC-41354, TN 10981, UT 10783658-5501, VA 2705169445, VT 174.0000871, WA LEAFLH-763PG, WI No. 537-DCFRR WV WV056

The Bath or Shower You've Always Wanted IN AS LITTLE AS 1 DAY



**\$1000
OFF***

OR

\$1500 OFF when financing
with remodelingloans.com™ OR **0% Interest**
For 18 Months™

OFFER EXPIRES 9/30/2025
Military & Senior Discounts Available



CALL NOW!

(844) 300-2419

*Includes labor and product; bathtub, shower or walk-in tub and wall surround. This promotion cannot be combined with any other offer. Other restrictions may apply. This offer expires 9/30/2025. Each dealership is independently owned and operated. **Third party financing is available for those customers who qualify/Participating dealers only. See your dealer for details. ©2025 Bath Concepts Industries.

Get started with
3 months free*



WeightWatchers
weightwatchersoffer.com/53

*With select plan purchase. Restrictions apply.

CONNELL

ROOFING • SIDING • GUTTERS



ROOFING | SIDING | GUTTERS | WINDOWS & DOORS

Servicing Metro-West Boston & Cape Cod, Massachusetts

Connell Roofing, based in Wrentham, MA, has been providing top-tier roofing services to both residential and commercial property owners for over 60 years. Their commitment to quality, integrity, and customer satisfaction has established them as a leading roofing company in Massachusetts.

REQUEST ESTIMATE: 781-444-7577

www.connellroofing.com

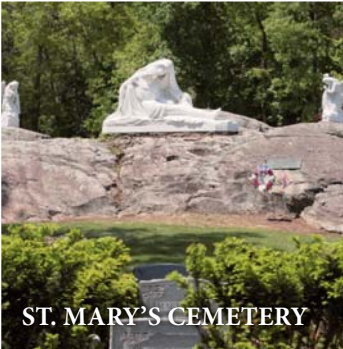


PREMIER REMOVAL SERVICE 617-893-9824

Steven Conroy - Owner

www.lugaway.com | info@lugaway.com

- Home Cleanouts
- Garage Cleanouts
- Office Cleanouts
- Storage Unit Cleanouts
- Estate Cleanouts
- Furniture
- Appliances
- Televisions
- Yard Waste
- Construction Debris
- Demolition



ST. MARY'S CEMETERY

St Mary's Cemetery in Needham, founded in the 1870's, is the parish cemetery of Mary Immaculate of Lourdes. The Cemetery is a reverent resting place for those awaiting reunion with the Risen Lord. The decision to pre-plan and purchase interment rights is a responsible and thoughtful gesture, sparing loved ones the stress of making difficult decisions during a time of grief and loss.

For information, call the cemetery staff at Mary Immaculate of Lourdes Church at **781-235-1841**.
St. Mary's Cemetery | 1 Wellesley Avenue, Needham, MA 02494

SAVE \$350 when you transform your patio into an outdoor oasis.



America's #1 Awning

- Instant shade—at the touch of a button.
- Enjoy more quality time with family and friends.
- Up to 10-Year Limited Warranty.

Call 1-844-429-8765 now to **SAVE \$350 TODAY!**



America's #1 Awning!

Our windows will **lower your utility bill** and keep your home comfortable.



WINDOW NATION

BUY 4 WINDOWS GET 4 FREE*

Offer ends 9/30/2025

\$0 down payment | **\$0** monthly payment | **0%** interest rate
for 2 years

Offer ends 9/30/2025

▼ Schedule your FREE quote! ▼

855.919.2625

*Terms apply

AD SPACE AVAILABLE

617-779-3771

\$349.99 | **FREE**

TEETH WHITENING & COMPREHENSIVE CONSULTATION—

VALUED AT \$880 | VALUED AT OVER \$1200

Mention this advertisement for the discount.

Barry Bessler, DMD • 508-358-2336

Visit our website: www.besslerkang.com

30 Boston Post Rd., Wayland

COSMETIC & GENERAL DENTISTRY | SMILE MAKEOVERS

FULL MOUTH RECONSTRUCTION & MORE

BESSLER & KANG, DMD

PROSTHODONTISTS

REVIEWS:  

"He has risen." Matt 28:6



H3 HAND HEWN BUILDERS

Quality Craftsmanship You Can Trust

Servicing Concord & Surrounding Communities

- Licensed & Insured -

JOSEPH FEENEY

617-824-4643

AD SPACE AVAILABLE

617-779-3771

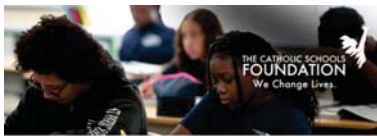
COOK'S AUTOMOTIVE



Auto Repair | Maintenance | Oil Changes | Tires

508-358-7760

338 Boston Post Rd. Wayland



CHANGE LIVES TODAY!

The Catholic Schools Foundation is the largest K-12 scholarship-granting organization in the state of Massachusetts. Make a difference in the lives of students in need by providing them with a high-quality Catholic education.

Learn how you can make a difference at:
www.csfboston.org



SUPPORT STUDENTS TODAY!



J & E ACCOUNTING & TAX SERVICES INC
ASH WASILIDAS, CPA
Accounting & Business and Personal Tax Services



945 Concord Street, Suite 109 Framingham, MA 01701
Phone: 617-462-4653
Email: info@ashcpa.com Website: www.ashcpa.com

FLEURY
FINISH
CARPENTRY

We offer a variety of commercial and residential services from custom finish carpentry to full kitchen remodels

MA GC License and Fully Insured
718-708-9249
www.fleuryfc.com

Fleury Finish Carpentry is owned and operated by husband and wife team, Vinny and Adele Fleury.

JF
JASON FOLEY
ELECTRICIAN

FULLY LICENSED & INSURED

857-312-1149
jason.foley.electrician@gmail.com



Ron's TIRE & SERVICE Since 1992
Tires • Auto Repair
We are here when you need us

Large Inventory of All Major Tire Brands & Sizes



635 Waverly St. Framingham
www.ronstire.com | 508-872-2266



Architectural Design | Planning | Construction

**DESIGNER CONSTRUCTION
MANAGEMENT GROUP INC**

We Craft Your Vision!

Call us today

857-233-1293

www.designerconstructiongroup.com



**SENIOR
CARE
OPTIONS**
IN FRAMINGHAM, MA



CARMEL TERRACE
ASSISTED LIVING
ST. PATRICK'S MANOR
NURSING & ROSARIO CENTER
FOR SHORT-TERM REHABILITATION



CONTINUUM OF CARE ON ONE CAMPUS, WHERE TWO
OUTSTANDING HOMES WORK TOGETHER TO MEET
EVOLVING NEEDS — THE DIFFERENCE IS LOVE.

INDEPENDENT &
ASSISTED LIVING
CARMEL TERRACE
950-400-7122
WWW.CARMELTERRACE.ORG/LOVE-RE3
CENTRAL STREET FRAMINGHAM, MA 01701

**AD SPACE
AVAILABLE**

617-779-3771



**Tamburrini
Painting
Inc**

- Residential | Commercial
- Interior | Exterior
- Deck | Porches
- Pressure Washing
- Cabinet Refinishing



scan for all services

Jamie Tamburrini
617-694-8001

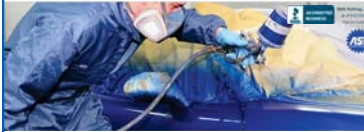
LAVELLE & CO. PAINTING
CONTRACTORS

Trusted Painting & Construction Services

617-787-1907 • www.lavelleco.com



K & S Auto Inc.



**A BUSINESS BUILT ON
QUALITY AND HONESTY**

67 Beaver St. Framingham
508-872-9452
www.kandsauto.com

PAUL MACRINA
Electrical

Your family electrician.

(508) 359-7954

www.PaulMacrina.com



**AD SPACE
AVAILABLE**

617-779-3771

**It's not just a generator.
It's a power move.**

Receive a free 5-year warranty
with qualifying purchase*
- valued at \$535.

Call 617-841-4985 to
schedule your free quote!

GENERAC

*Terms and Conditions apply.

Be prepared before the next power outage.



**WAYLAND
AUTOMOTIVE**

Wayland Automotive
services all makes and
models

322 Commonwealth Rd. Wayland
508-653-6230 • www.waylandauto.com



**LICENSED
& INSURED
ROOFER**

**UNIVERSAL
ROOFING**

**WE'VE
GOT YOU
COVERED**

Residential Roofing • Commercial Roofing
Siding • Skylight Installation
Gutter Installation • Roof Replacement
Metal Roofs • Asphalt Shingle Roofs
Rubber Roofs

508-922-8108 | www.universalroofingma.com