

FOR RESERVATIONS CALL: +1 800-842-2407
Visit us online at www.sunsetmotel.com



GENERAL ACCESSIBILITY

The beach below the motel is only accessible by stairs, however there are public beach accesses at sea level a mile or more north and south of the motel.

Beach Access Keys available at lobby.

All multi-story buildings have stairway access only. There are 29 ground floor rooms, including four that are specially equipped for guests with mobility issues. Oceanview Studio #185:

is equipped for the hearing-impaired. Modern 480 sq. ft. room has 2 Queen beds, sofa, electric fireplace, microwave/refrigerator, tub and shower, and private patio facing the ocean. Located near the lobby and indoor pool/spa.

Oceanview Studio #186:

equipped with a wheelchair accessible bathroom w/ roll-in shower. The 480 sq. ft. room has 2 Queen beds, sofa, electric fireplace, microwave/refrigerator, French doors that open onto a private patio facing the ocean. Located near the lobby and indoor pool/spa.

The Oceanfront Vern Brown Addition: has three rooms with wheelchair accessible bathrooms with step-in shower (#351, 353 and 355) and access from street. Measuring 405 sq. ft., they have 2 Queen beds, a microwave/refrigerator, recliner, and sliding glass door opening onto a small private balcony. A limited number of accessories is on hand (shower bench, toilet frame, toilet seat riser) and can be installed in any ground floor room.

Please contact us by phone (800-842-2407) or email (sunset@sunsetmotel.com) for further information.

HOW TO FIND US

Sunset Oceanfront Lodging is located in west Bandon, about 1/2 mile south of 11th Street S.W. (Turn LEFT off HWY 101 at 11th Street signal. At second stop sign, just past City Park, turn left and continue south on Beach Loop Drive. Office is on the left.) We are about 2 miles south-west of Old Town, 7.5 miles south of Bandon Dunes Golf Resort and 5.5 miles north of Bandon Crossings Golf Course.

SUNSET

Oceanfront Lodging

1865 Beach Loop Drive Bandon, Oregon
Mailing: P.O. Box 373, Bandon, OR 97411
Phone: +1 541-347-2453 Fax: +1 541-347-3636

POLICIES AND RATES

CHECK IN: 4:00PM.; CHECK OUT by 11:00AM

RATES are based on **Double Occupancy** (\$10.00(+ tax) for additional guest.) There must be enough beds for all occupants, including children 12 and under.

No bedrolls, air mattresses or roll-away beds allowed.

Maximum occupancy is 4 people in a room with 2 beds; 2 adults + 1 child under age 5 in a room with 1 full, Queen or King bed. A room with 1 Twin bed 1 adult.

Add 11% Lodging Tax.

Rates may change without notice.

RESERVATIONS: Deposit of 1st night at time of booking

We accept Visa, MasterCard, Discover, and AMEX.

Cash accepted on departure for remaining nights if credit card has been authorized upon arrival.

CANCELLATION without charge with advanced notice:

30 days for groups; and 24 hours for all other units.

No refunds for cancellations made after 4:00PM(PST).

GROUP BOOKINGS: Require 10+ Units or more.

Group Contact: kyra@sunsetmotel.com

Sunset Oceanfront Lodging is not responsible for Expedia, Hotels.com, and other third party online booking errors.

CHECK-OUT : after 11:00AM is subject to approval. Requests for late check-out may not be granted if the room is blocked.

PETS (Dogs Only) must be declared and stay only in designated rooms for a non-refundable fee (\$20+tax). Limit three (3) per room.

“Comfort,” “therapy,” & “Emotional Support” Animals are not “Service Animals,” and may stay in pet-friendly rooms only. Pets may not come to the pool, be left in vehicles overnight or unattended in any guest rooms, and may not enter the lobby between 7:30 AM -10:00 AM (while food is being served per OAR 333-150-1111 Ch. 6-501.115 (B)(6)).

Penalty of \$300 for violation of these policies.

INDOOR POOL/HOT TUB: 9 :00AM to 10:00PM.

Registered Guests ONLY.

Children 13 and under MUST have adult supervision.

No lifeguard on duty.



RESERVATIONS: 800-842-2407

Beautifully situated on high ground overlooking a sandy beach, majestic sea stacks and the Pacific Ocean, Sunset Oceanfront Lodging offers beach access and a variety of accommodations — large and small, rustic and modern. There are four motel buildings and some beachfront Duplex. Units west of Beach Loop Drive are “Oceanfront;” units to the east are “Oceanview” or “Economy”. Vern Brown Addition and Oceanview Studios units have private ocean-viewing decks or patios. **ALL UNITS NON-SMOKING — SOME ARE “PET FRIENDLY” — ALL RATES BASED ON DOUBLE OCCUPANCY**



VERN BROWN ADDITION OCEANFRONT — NO PETS

Oceanfront 3-story building (**The top floor is street level**) with private balconies and the best views of the beach was built on the face of a 80-foot cliff with parking across the street. Stairway access to lower floors and the beach. Some units have kitchens and/or electric fireplaces, all rooms have a small refrigerator and microwave. **Three handicap-equipped rooms (#351, #353, #355) at the street level** have 2 Queen beds, a recliner, and ADA accessible bathroom with a bench & step-in shower. **NO PETS, NO ELEVATOR**

PARTIAL OCEANVIEW STUDIOS - (PETS OK 185-189, 195-199)

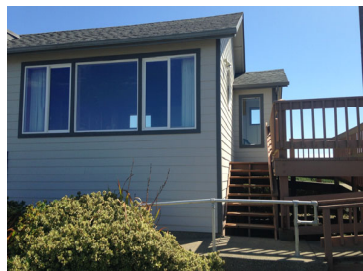
Ground Floor (181-189) with easy access, 2 Queens, a private patio and some ocean view; or **Upstairs (191-199)** with one King, a private deck and better ocean view (*No Elevator*). All have a desk, table and chairs, electric fireplace, sofa and sitting area, small refrigerator, microwave and coffeemaker. Located east of Beach Loop, about 50 yards from the cliff’s edge and a beach access stairway, these rooms are near the Lobby and Indoor Pool and Spa.

Room 185 is equipped for hearing-impaired;
Room 186 is ADA-compliant with roll-in shower.



APARTMENT 200 is a 2-story apartment with kitchen, living room with covered patio and a bathroom (shower) downstairs. Two Queen beds and a half-bath share the upstairs bedroom (which also has a electric fireplace). Located west of Economy Rooms in the “Economy Oceanview” building, next to Lord Bennett’s Restaurant. Unit is across street from water providing partial Oceanview’s. Great ocean views from both floors. Sleeps 4. **PARTIAL VIEWS - NO PETS**

STUDIO 212 is a private, cedar-paneled room with a vaulted ceiling and picture windows facing the ocean, outfitted with a King bed, sofa and easy chair, microwave, small fridge, and tub with shower. This 2nd-floor studio located east of Beach Loop Drive has a private ocean viewing deck, with both ramp and stairway access. Sleeps 2. **PARTIAL VIEWS - NO PETS.**



SUNSET

Oceanfront Lodging

Family owned and operated since 1936

RESERVATIONS: +1 (800) 842-2407
Visit us online at: www.sunsetmotel.com/



"ECONOMY ROOMS"
(201-204)

Smaller upstairs rooms with rustic, wood interior and **no ocean view**. Shared ocean viewing deck. **PETS OK**

"ECONOMY OCEANVIEW"

OCEANVIEW ACROSS STREET

(205-211 upstairs, 221-225 ground) Small and affordable partial ocean view rooms with rustic natural wood interior, one or two Queens OR one or two double beds. **Fridge in 205; fridge and microwave in 221; Kitchen in 211, 224, 225. Shower only: 205, 221, 224; others: tub/shower.**

PETS OK (fees apply)



"ORIGINAL OCEANFRONT" (Pet-Friendly)

Casual, Rustic Motel Rooms (231-236) Six ground floor rooms on shared walkway and stunning beach view. All have glass door for ocean view. **Unit 231** suite with two separate sleeping areas (1 Queen and 1 double bed), kitchen, living room with fireplace. Others have 1 Queen or 2 double beds **Remodeled with hardwood floors, fridge, and microwaves. PETS OK (fees apply)**



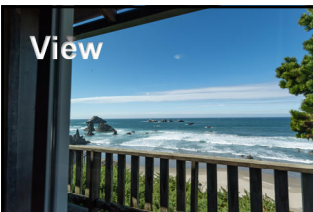
OCEANFRONT DUPLEX

Rustic Oceanfront adjoining Duplex with quaint furnishings have unsurpassed views of the breathtaking Pacific Ocean. Beach access is from Vern Brown. Rates are based on double (2) occupancy additional person plus \$10.00(+tax) per extra person the rest of the year. Remodeled 2024.



INDOOR POOL & SPA - HOURS: 9:00AM - 10:00PM

NO PRIVATE EVENTS OR PARTIES



UNIT	MAXIMUM OCCUPANCY	FEATURES	SUMMER 2025	WINTER 2025-26
DUPLEX (#416) (Ground Level)	2 PETS OK (fees apply)	1 Queen, sofa, microwave, small refrigerator, coffeemaker, and private balcony. Combine with 417 to create an adjoining suite.	\$200	\$170
DUPLEX (#417) (Ground Level)	4 PETS OK (fees apply)	2 Queens, sofa, fireplace, kitchen with microwave, and private balcony. Combine with 416 to create an adjoining suite.	\$300	\$200

SUNSET

Oceanfront Lodging

RESERVATIONS: +1 (800) 842-2407
Visit us online at: www.sunsetmotel.com/rooms

RATES BY ROOM TYPE:

WINTER **SUMMER**

VALID: October 1 2025 - May 22, 2026
May 22, 2026 - Sept. 30, 2026

ROOMS:	WINTER	SUMMER
Oceanview Studios (2 Queens or 1 King) PARTIAL OCEANVIEWS PETS OK: 185-189 & 195-199 (FEES APPLY)	181-189 (2 Queens) GL 186 (2 Queens - HC) 191-199 (1 King) STAIRS	\$175.00 \$257.00
King Studio—Room 212 (Vaulted ceiling, large deck, partial view)	212 (1 King)	\$175.00 \$266.00
Apartment (2 Queens, 1.5 Baths, 2 floors)	200 (2 Queens)	\$185.00 \$300.00
Economy (No view, stairway access only) (Shared WW)	201 (2 Queens) 202 - 204 (1 Double)	\$105.00 \$115.00
Original Oceanview Upper Level (Stairs) (Partial Oceanview) (Shared WW)	206, 207, 210 (1 Double)	\$115.00 \$145.00
Original Oceanview Upper Level (Stairs) (Partial Oceanview) (Shared WW)	205 (1 Queen) 208 - 209 (2 Doubles)	\$115.00 \$145.00
Original Oceanview Lower Level (Shared WW) (Partial Oceanview)	221-223 (Ground Floor)	\$115.00 \$145.00
Original Oceanview W/ Kitchen (Partial Oceanview)	211(Upper Level) 224 -225 (Ground Floor)	\$150.00 \$170.00
Original Oceanfront Suite (Kitchen)	231 (1Q/1D Bed Suite)	\$200.00 \$300.00
Original Oceanfront - 2 Doubles (Shared WW)	232-233, 234, 236 (2 Doubles)	\$170.00 \$200.00
Original Oceanfront - One Queen Bed	235	\$170.00 \$200.00
VERN BROWN : NO PETS		
Vern Brown Deluxe 1 King w/ Fireplace (OR) 2 Queens w/ Fireplace (Stairs)	(1st Level) 350, 352, 354, 356; (2nd Level) 357, 359, 361, 363	\$195.00 \$335.00
Vern Brown 2 Queen Standard ADA (OR) Vern Brown 2 Queen Standard (Stairs)	(Street Level) 351, 353, 355; (2nd Level) 358, 360, 362	\$185.00 \$320.00

