

**Manerbio (Bs)**

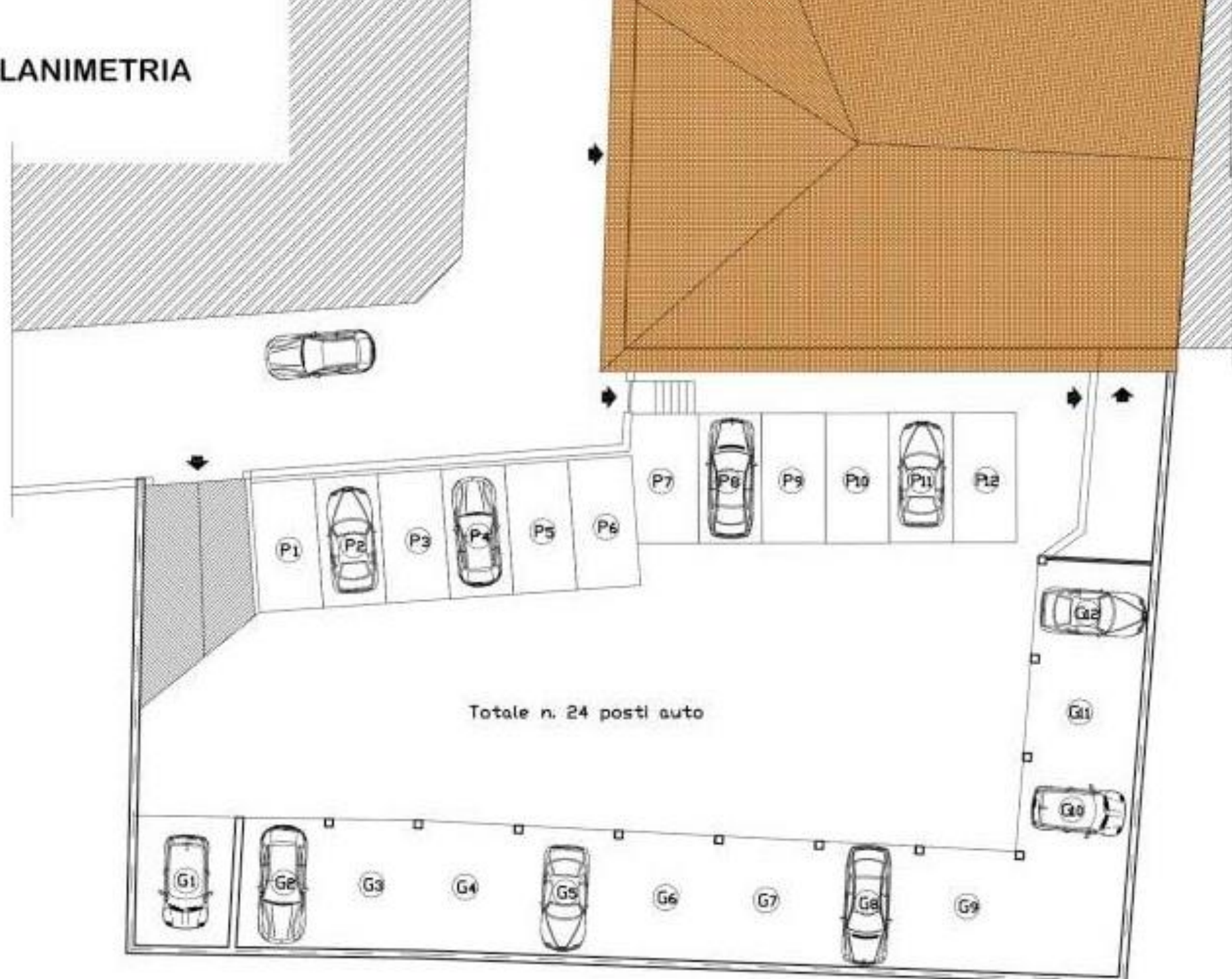
**Planimetrie**

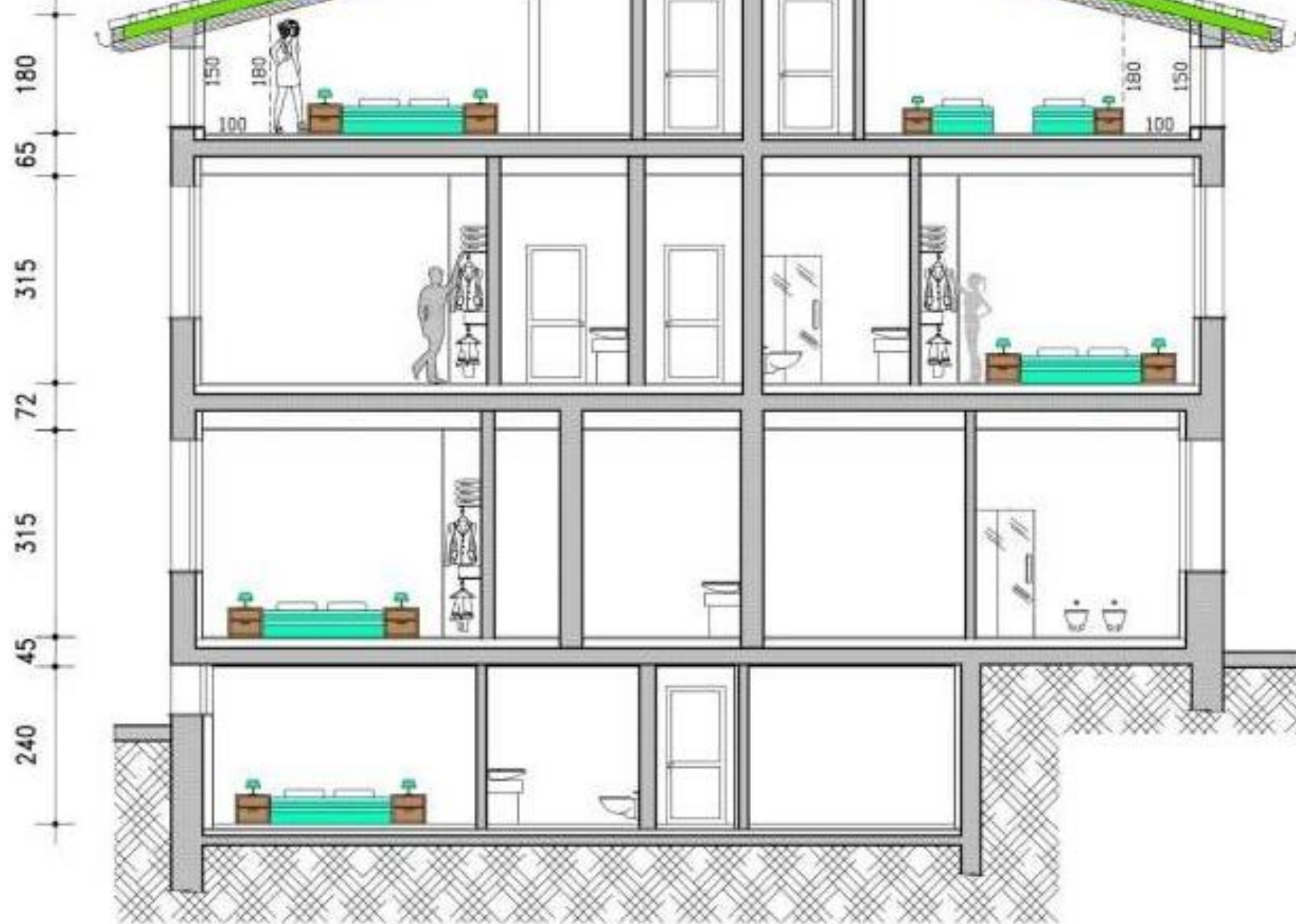
**appartamenti in classe A  
finiture di pregio personalizzabili  
garage doppio  
riscaldamento a pavimento  
pannelli solari  
ascensore**

**per informazioni:  
[bicoccasrl@bicoccasrl.it](mailto:bicoccasrl@bicoccasrl.it)**



# PLANIMETRIA





SEZIONE A-A





PIANO SEMINTERRATO

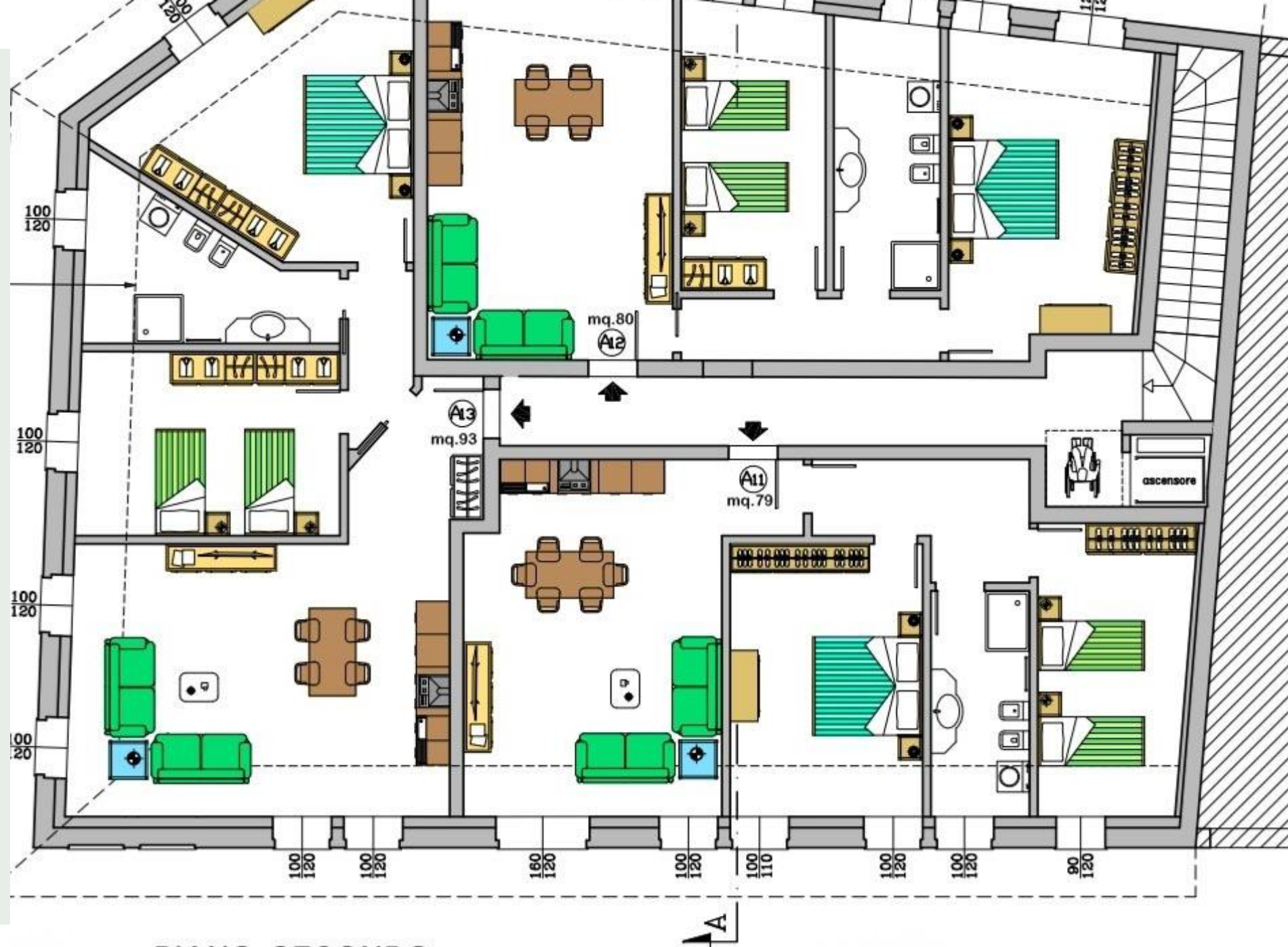


PIANO TERRA





PIANO PRIMO



PIANO SECONDO

# Grazie

Finema Srl  
Vicolo Coro, 15 Manerbio (Bs) 25025

[bicoccasrl@bicoccasrl.it](mailto:bicoccasrl@bicoccasrl.it)