

# MEMBER WELCOME PACKET

---



(530) 257-4323  
Cell: (530)321-7779



[www.lassencountychamber.org](http://www.lassencountychamber.org)



[Director@lassencountychamber.org](mailto:Director@lassencountychamber.org)



1516 Main street Susanville CA 96130

# WELCOME

We are truly grateful that you have chosen to become a member of the Lassen County Chamber of Commerce. By joining the Chamber, you are becoming part of a collective effort to support local businesses, strengthen our local economy, and build a vibrant, connected community here in Susanville and throughout Lassen County. Our Chamber is built on the belief that strong businesses create strong communities, and your membership plays an important role in that mission.

As a Chamber member, you are joining a network of business owners, organizations, and community leaders who are committed to collaboration, connection, and local pride. Whether you are a long-standing business, a nonprofit, or a new venture just getting started, your involvement helps shape the future of our community. Through networking opportunities, advocacy, events, and promotion, the Chamber works to ensure our members are supported, visible, and heard.

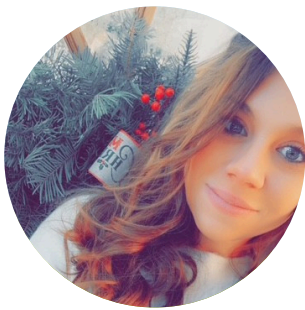
Your membership is more than a business decision – it is an investment in the place we call home. Together, we are working to keep local dollars local, support community events, welcome visitors, and create opportunities for businesses to grow and thrive. We are honored to support you, promote your work, and stand alongside you as we continue building a strong and resilient Lassen County.

Thank you for being part of our Chamber family. We look forward to connecting with you and working together to make our community even stronger.



# MEET YOUR DIRECTORS

---



**Morgan Wemple**

*President*

✉ [MorganCetara@gmail.com](mailto:MorganCetara@gmail.com)

Wemple's Pumpkin Patch - Assistant to Operators

**Breanna Glass**

*Vice President*

✉ [milwoodflorist@gmail.com](mailto:milwoodflorist@gmail.com)

Milwood Florist & Treat Pet Supply - General Manager



**Kaitlyn Midgley**

*Treasurer*

✉ [kmidgley@lcoe.org](mailto:kmidgley@lcoe.org)

Lassen County Office of Education - Communications  
Specialist

Creative Connections by Kaitlyn - Owner





# MEET YOUR DIRECTORS

---



**Cassi Colvard**

*Past President*

✉ [cassinyc@gmail.com](mailto:cassinyc@gmail.com)

Forest Office Equipment - Graphic Designer/ Signage  
Consultant

**Melanie Westbrook**

*Director*

✉ [melaniewestbrook80@gmail.com](mailto:melaniewestbrook80@gmail.com)

Sierra Desert Properties, Broker - Owner



**David Teeter**

*Director*

✉ [teeterlassen@gmail.com](mailto:teeterlassen@gmail.com)

Margie's Book Nook - Owner





# MEET YOUR DIRECTORS

---

**Christy Lewis**

*Director*

✉ [christybiscuit73@gmail.com](mailto:christybiscuit73@gmail.com)

Lassen Community College - Instructor



**Jodi Henry**

*Director*

✉ [jodihenry88@gmail.com](mailto:jodihenry88@gmail.com)

Town & Country Real Estate - Realtor



# MEET YOUR DIRECTORS

---



**Cait Drake**

*Director*

✉ [Cait.Drake@plumasbank.com](mailto:Cait.Drake@plumasbank.com)

Plumas Bank - Client Service Specialist

**Alyssa Soto**

*Director*

✉ [asoto@co.lassen.ca.us](mailto:asoto@co.lassen.ca.us)

Lassen County Public Health / LVN





# MEET YOUR EXECUTIVE TEAM

---



**Samantha Whitt**

*Executive Director*

✉ [Director@lassencountychamber.org](mailto:Director@lassencountychamber.org)

☎ 530-310-7779

**Destiney Perez**

*Executive Assistant*

✉ [Assistant@lassencountychamber.org](mailto:Assistant@lassencountychamber.org)





# SERVICES OFFERED

As a member of the Lassen County Chamber of Commerce, you gain access to meaningful benefits designed to support, promote, and strengthen your business while keeping you connected to the greater community. Chamber membership provides increased visibility through promotion, marketing, and community events, valuable networking opportunities with local business owners and leaders, and a unified voice advocating for business interests at the local and regional level. Members also benefit from access to resources, support, and opportunities that encourage growth, collaboration, and long-term success. Together, these benefits help businesses thrive while contributing to a strong, vibrant Lassen County.

---

## **Business Promotion & Visibility**

01

The Chamber actively promotes our members through social media, community events, our business directory, and marketing efforts designed to spotlight local businesses. From grand openings and ribbon cuttings to online features and referrals, we help increase your visibility and connect you with customers, visitors, and fellow businesses.

## **Networking & Community Connections**

02

We provide opportunities for members to build relationships with other business owners, nonprofits, and community leaders through mixers, meetings, and Chamber-hosted events. These connections foster collaboration, referrals, and partnerships that strengthen both individual businesses and our local economy.

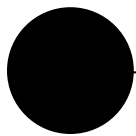
## **Advocacy & Business Support**

03

The Chamber serves as a voice for local businesses by advocating on issues that impact our community and economy. We work to keep members informed, connect them with resources, and support a healthy business environment in Susanville and throughout Lassen County.

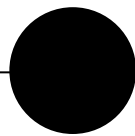


# MEMBERSHIP LEVELS



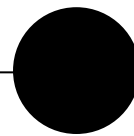
## **Small Business (1–5 Employees) - \$200**

Designed for small businesses seeking growth and visibility. Includes all standard membership benefits.



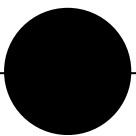
## **Large Business, Corporations, Financial Institutions, and Government (6+ Employees) - \$450**

Designed for established or expanding businesses. Includes all standard membership benefits.



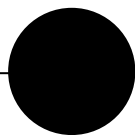
## **Non-Profit - \$150**

Designed for organizations, agencies, and officials serving our community. Includes all standard membership benefits



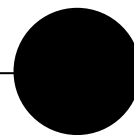
## **Individual / Family- \$100**

Designed for community supporters. Does not include benefits marked with (\*).



## **Standard Membership Benefits**

- New Business/Celebration Ribbon Cuttings\* (two-week notice recommended)
- Grand Opening Celebrations\*
- Chamber Luncheons\*
- Business Referrals\*
- Networking Opportunities\*
- Advocacy & Business Support
- Chamber Directory Listing\*
- Monthly E-Newsletter (2 complimentary per year; additional by add-on) \*
- Use of Chamber Member Logo
- Reservation of Chamber Conference Room (2x annually)
- Opportunity to join Chamber Committees
- Business social post re-share
- “New Member” social post (within 2 weeks of joining; scheduled with staff)





# PREMIUM PARTNERSHIP LEVELS



---

## Community Star – \$1250

*Best for growing members who want to expand their reach.*

- Branding on Monthly E-Newsletters
- Advertisement on Chamber Lobby TV
- Quarterly Luncheon Registrations (2 reserved seats each)
- 1 Monthly Social Media Posts (must supply content)
- 3 event sponsorships of your choice.
- 1 week or 7 days of advertising on yard display.

## Community Super Star – \$2500

*For members seeking high-level visibility and full community engagement.*

- Custom created logo on Chamber Homepage
- Rotating Banner
- 4 Front-Screen Advertising 2 weeks each
- Name on all Main Chamber Events
  - Spring show
  - 4<sup>th</sup> of July
  - Main Street Cruise
  - Safe N’ Sane
  - Magical Country Christmas
- Activation Booth (Free Booth at two events)
- Quarterly Luncheon Registrations (4 reserved seats each)
- Local Radio Advertisement (1 Month Feature)
- 2 Monthly Social Media Posts
- “Business of the Month” Highlight once a year.
- Networking Night once a year of your choice.

## Add-On Marketing Opportunities

*Ad Space on Chamber Website or Sign*

- **Social Media Post** – \$35/Post
- **Newsletter Flyer Ad** – \$35/month
- **Newsletter Business Card Ad** – \$20/month
- **Meeting space \$75 an hour \$50 each hour after.**
- **Digital Sign Advertisement**
  - 1 Day – \$75
  - 1 Week – \$250
  - 1 Month – \$600
  - 6 Months – \$2500
  - 1 Year – \$4500
- **Event Sponsorships**
  - Spring Show – \$500
  - 4th of July – \$1000
  - Main street Cruise – \$500
  - Safe N’ Sane – \$500
  - Magical Country Christmas – \$1000



---

# NEXT STEPS



*Thank you!*

To get started, simply complete a membership application and submit payment online or in person at the Chamber office. Once received, we'll follow up to confirm your membership and help you take advantage of available benefits and opportunities. We look forward to connecting with you and supporting your success.



(530) 257-4323

[www.lassencountychamber.org](http://www.lassencountychamber.org)

[Director@lassencountychamber.org](mailto:Director@lassencountychamber.org)

---