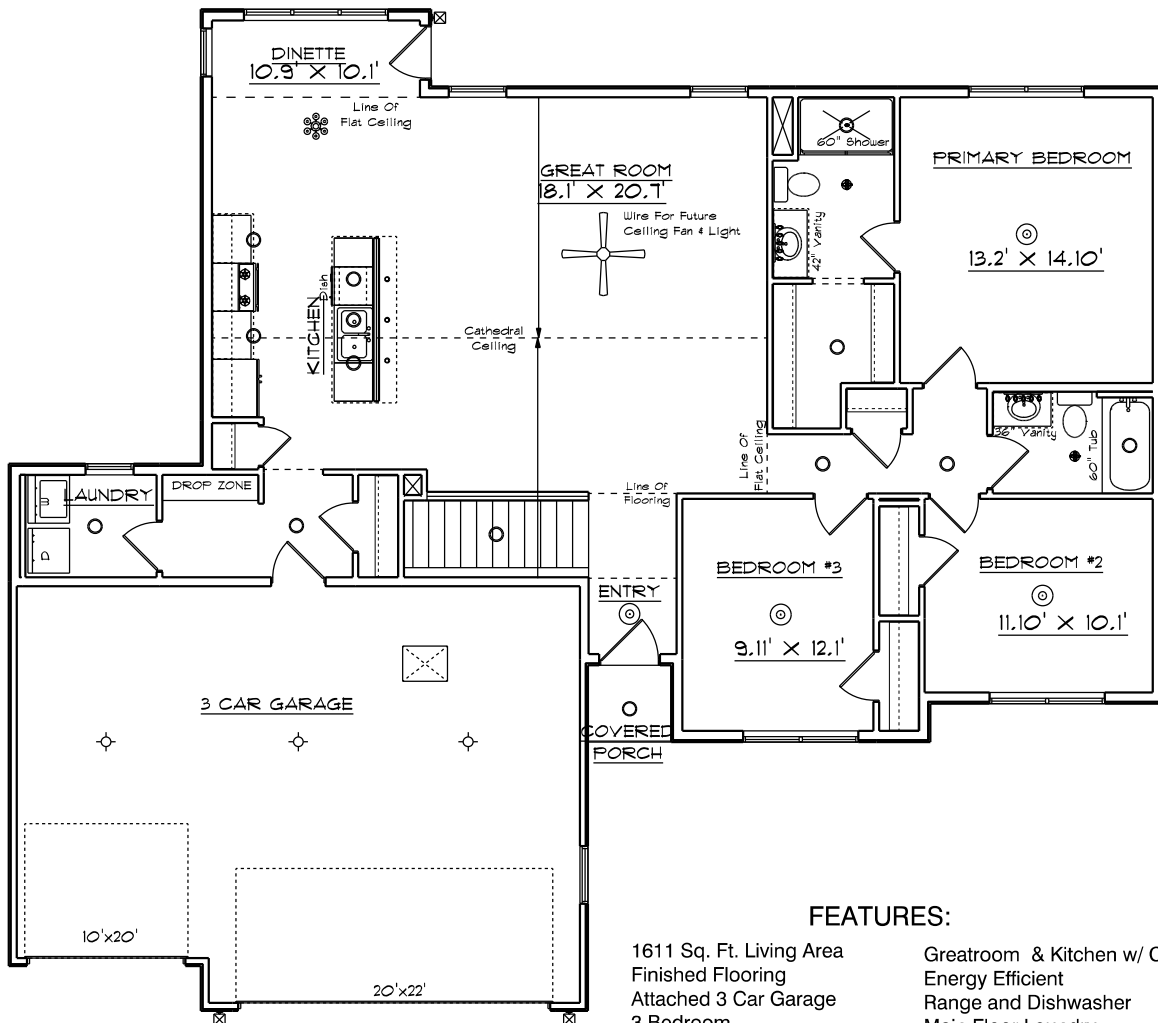


# 1611-Great Room

## A Elevation



### FEATURES:

1611 Sq. Ft. Living Area  
 Finished Flooring  
 Attached 3 Car Garage  
 3 Bedroom  
 2 Bath

Greatroom & Kitchen w/ Cathedral Ceiling  
 Energy Efficient  
 Range and Dishwasher  
 Main Floor Laundry  
 Hardwood Cabinets & Vanities

**JOE CONTARINO**

Broker

Dickerson Nieman

Office: (815) 399-8100

Cell: (815) 978-8677

Email: [info@contryhomes.com](mailto:info@contryhomes.com)

7/16/2025

\* All Dimensions are Approximate.  
 \* All elevations, features and prices are representative only and subject to change without notice. Consult a company representative for details.

© 2020 New Leaf Homes LLC.