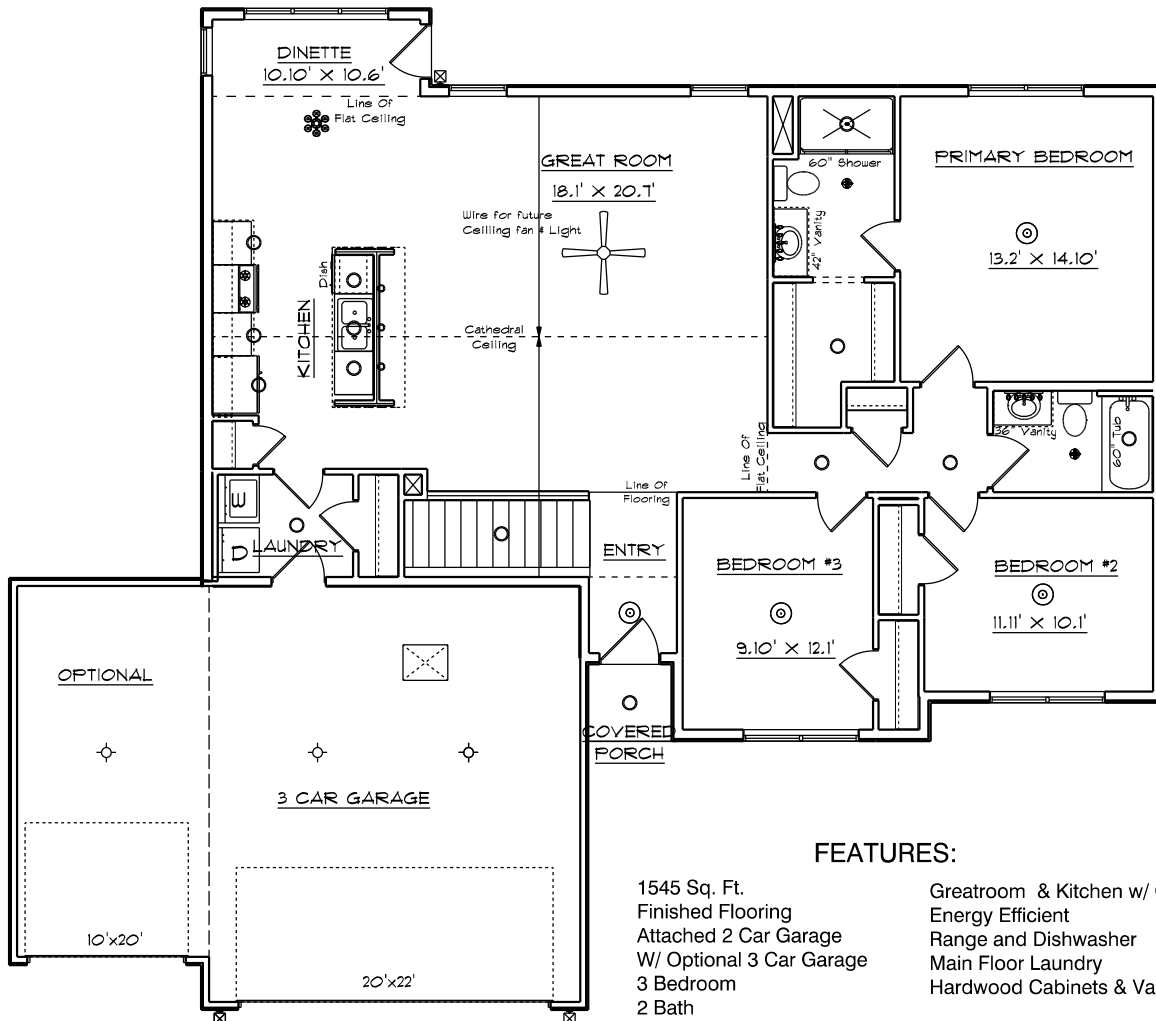


# 1545-Great Room

## F Elevation



### FEATURES:

1545 Sq. Ft.  
Finished Flooring  
Attached 2 Car Garage  
W/ Optional 3 Car Garage  
3 Bedroom  
2 Bath

Greatroom & Kitchen w/ Cathedral Ceiling  
Energy Efficient  
Range and Dishwasher  
Main Floor Laundry  
Hardwood Cabinets & Vanities

**JOE CONTARINO**

Broker

Dickerson Nieman

Office: (815) 399-8100

Cell: (815) 978-8677

Email: [info@contryhomes.com](mailto:info@contryhomes.com)

7/16/2025

\* All Dimensions are Approximate.  
\* All elevations, features and prices are representative only and subject to change without notice. Consult a company representative for details.

© 2020 New Leaf Homes LLC.