



Community Scholarships



community
foundation

ALLIANCE

Program Guidebook!



communityfoundationalliance.org/scholarships

Table of Contents

- 02** Table of Contents
- 03** Community Scholarships Program
- 04** Ready to Apply?
- 05** Prepare & Gather Your Materials
- 06** Application Requirements
- 07** Accessing the Online Scholarship Portal
- 08** After You've Applied
- 09** Scholarship Important Dates
- 10** How are we able to support local students?
- 11** Questions? Get Connected!



Community Scholarships Program

Many of our donors have honored their loved ones, communities, high schools, colleges, or professions by endowing scholarship opportunities through their local Community Foundation. Together, these scholarships make up our Community Scholarships Program. This program is designed to support an array of students pursuing different levels of education across Southwest Indiana and in select areas of Illinois and Kentucky. After applying to our 2025–2026 Community Scholarships Common Application, you will be matched with the scholarships you're eligible for.

Program Highlights

- **Wide Range of Awards:** Hundreds of scholarships for graduating seniors across Southwest Indiana and select areas of Illinois and Kentucky.
- **Simple Application Process:** Scholarships can be completed through our online Community Scholarships Common Application.
- **Pay special attention to our off-cycle and outside scholarships that require a separate application.**
- **Deadline:** Applications are open today and close on January 19, 2026, at 11:59 p.m.

Start your application early!

All supplemental materials must be submitted by the deadline, so build in plenty of time for each step. Give your references time to complete their recommendations, allow yourself enough time to write thoughtful essays, and request your transcripts early so your Guidance Counselor has time to process them.



200+ Scholarship Opportunities

Ready to Apply?

Community Scholarship Program



Prepare & Gather Your Materials

Basic Information

- Applicant Information
- High School Information
- Academic History
- Extracurricular, School, and Community Activities
- Guidance Counselor Contact Information
- College/University Information
- Parent/Guardian Information
- Personal Statement
- Personal References Contact Information

Financial Information

While the FAFSA or Federal Student Aid Estimator may not be required for every scholarship, all students are required to complete one of them.

Some scholarships consider financial need as part of the selection process, and having this information ensures applicants are matched as accurately as possible to the opportunities they're eligible for.

Supplemental Requirements

Each application requires different materials. You can find the details in the Supplemental Requirements section of each scholarship description. **These must be submitted by January 19, 2026, at 11:59 p.m.**

Examples of supplemental requirements:

- Transcript
- Essays
- Certifications
- Letters of Recommendation



Application Requirements ✓

The eligibility criteria for each available scholarship have been thoughtfully established by the scholarship fund's founders. We strongly encourage applicants to thoroughly review the specific eligibility, selection criteria, and any supplemental requirements listed in each scholarship description.

✓ Specific Eligibility

The specific requirements or qualifications that an applicant must meet to be considered eligible for a scholarship opportunity.

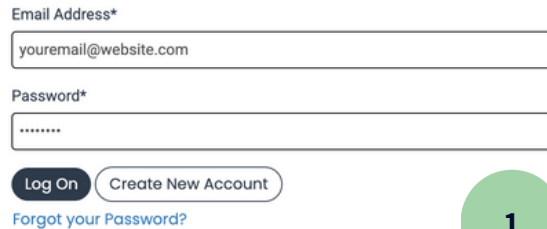
✓ Selection Criteria

The essential skills, qualifications, knowledge, and experience required for an applicant to be considered for a scholarship. These specific criteria are used to evaluate applicants and are scored during the selection process.

✓ Supplemental Requirements

The required accompanying documents to apply for a scholarship opportunity.

Accessing the Online Scholarship Portal !



Email Address*

Password*

[Log On](#) [Create New Account](#)

[Forgot your Password?](#)

Create an Account or Log in

New Users: Select **Create New Account** and complete all required information.

Returning Users: Log in using your email and password.

2025-2026 Community Scholarships Common Application

Many of our donors have honored their loved ones, communities, high schools, colleges, or professions by endowing scholarship opportunities through the Community Foundation. We administer separate scholarship funds established by individuals, families, corporations, and organizations to assist local students in pursuit of advanced education. Together, these scholarships make up our Community Scholarship Program.

See More

 Closes
01/19/2026

[Preview](#) [Apply](#)

Access the Common Application

Once logged in, locate the **2025-2026 Community Scholarships Common Application** box and click **Apply**.

To access off-cycle scholarships, select the box on the left and input the scholarship access code.



Contact Info Request Documents 2 Related Requests

[Contact](#)

Verify Contact Information

Under **Contact Info**, confirm that all information is complete and correct. To edit, select the pencil icon, make changes, and save.

Complete the Common Application

Fill in all sections and answer all questions marked with an asterisk.

Submit Your Common Application

Carefully read all text before clicking **Submit**. You will receive a confirmation email.

Complete Your Eligible Scholarship Opportunities

Once you click **Submit**, you'll see a page listing scholarships you're eligible for. Scholarships will be organized into categories: **Action Needed**, **No Action**, and **Completed**

- Click on each scholarship in the **Action Needed** section to request letters of recommendation, write essays, or submit other required documents.
- Click **Save** to hold your answers and return later.
- You must click **Submit** at the bottom of each scholarship for it to be complete.
- If only the Common Application appears, you are not currently eligible, and you will receive a message confirming that you did not qualify. If you believe you should be eligible, please contact your local Community Foundation.

After You've Applied



EVALUATION

A diverse Scholarship Committee will carefully review all scholarship applications using a consistent, equitable scoring rubric.

Each committee is committed to a fair and impartial selection process. Any potential conflicts of interest must be disclosed, reviewed, and appropriately addressed to ensure the integrity of the process.

SELECTION



The rubric scores will then be used to identify the most qualified recipients.

These recipients will be recommended to move forward.

APPROVAL

Selected recipients will be submitted for final approval to the Community Foundation Alliance Board of Directors. Once approved, recipients will be notified of their selection via email.

FORMAL LETTER OF ACCEPTANCE



Along with the email notification, recipients will be required to complete an Acceptance and College Selection Form.

These forms must be submitted through the scholarship portal by May 1.



Scholarship *Important Dates!*

Use the empty sections as a tool to help you stay organized while applying to scholarship opportunities.

1 DEC	Community Scholarship Program Applications Open	
19 JAN	Community Scholarship Program Applications Close	
30 APRIL	Community Scholarship Program Recipients Notified	
01 MAY	Acceptance and College Selection Form Deadline	

Notes

How are we able to support local students?

Our Community Scholarships Program is made possible by the generous Scholarship Fund's founders. These members of the Southwest Indiana community believe in investing in education to advance the next generation.

When a Scholarship Fund is created at the Community Foundation Alliance, resources are provided to students based on the selection criteria that matter most to our donors. These funds leave a legacy that enriches our community for generations.

Scholarship Funds honor loved ones, assist specific student populations, and encourage students to pursue different fields of study.

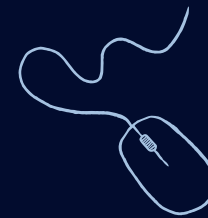
Learn More

To learn more, contact Aimee Stachura, Chief Development officer, at astachura@communityfoundationalliance.org.



Personalized & Expert Service

Our experienced staff work with donors to capture their vision for a scholarship purpose and their educational priorities. We manage the details and administrative paperwork to ensure scholarships are awarded on time, in compliance with all applicable regulations, and in accordance with donors' charitable wishes.



Easy & Accessible for Students

Our online application portal allows students to apply for all eligible scholarships. Our team works with the scholarship selection committees to ensure the awards reach the students they are designed to assist.

Questions ? Get Connected

Alliance

Michele Gates
Program Assistant
mgates@communityfoundationalliance.org | 812.429.1191

Daviess County

Laura Hazelman
Regional Director of Community Engagement & Impact
lhazelman@communityfoundationalliance.org | 812.254.9354

Gibson County

Amy Smith
Regional Director of Community Engagement & Impact
asmith@communityfoundationalliance.org | 812.386.8082

Knox County

Laura Hazelman
Regional Director of Community Engagement & Impact
lhazelman@communityfoundationalliance.org | 812.886.0093

Perry County

Emily Alvey
Regional Director of Community Engagement & Impact
ealvey@communityfoundationalliance.org | 812.547.3176

Pike County

Laura Hazelman
Regional Director of Community Engagement & Impact
lhazelman@communityfoundationalliance.org | 812.890.4469

Posey County

Amy Smith
Regional Director of Community Engagement & Impact
asmith@communityfoundationalliance.org | 812.838.0288

Spencer County

Emily Alvey
Regional Director of Community Engagement & Impact
ealvey@communityfoundationalliance.org | 812.649.5724

Vanderburgh County

Alysia Rhinefort
Regional Director of Community Engagement & Impact
arhinefort@communityfoundationalliance.org | 812.422.1245

Warrick County

Alysia Rhinefort
Regional Director of Community Engagement & Impact
arhinefort@communityfoundationalliance.org | 812.897.2030

