

FALLS CREEK

JUNE 15-20, 2026

Departure Time:

Monday, June 15

8:00 A.M. Load Gear

8:45 A.M. Camper Meeting in Chapel

9:00 A.M. Leave for Falls Creek

Return to Ponca City:

Saturday, June 20

12:30 p.m. (approx.)

What To Bring:

Bible

Pen/Notebook

Water bottle

Pillow

Sleeping Bag/Blanket

Sheets for Twin

Casual Clothes (See attached

Dress Code Information)

Worship Clothes (***)Modest length

Shorts are allowed)

Personal Items (Soap, Shampoo, etc.)

Towels

Cards/Games

THEME NIGHTS:

Monday: "TWINSgiving"

Tuesday: "Happy BDay "Merica"

Wednesday: "Thrifty Prom"

Thursday: "Camp Shirt"

Friday: "Neon Dreams"

CELL PHONES:

Campers **WILL NOT** be allowed to have their phones while at camp.

What Not To Bring:

Tobacco Items & Vapes

Fireworks

Drugs/Alcohol

Knives/Guns

Electronic Equipment

A Bad Attitude!!!

Extra Cost:

Snacks

Icees

Bookstore Items

One meal on the way to Falls Creek

Michael's Cell: 580-430-1550

Audra MacKinnon Cell: 405-229-0487

SENDING MAIL?

"Name of Camper"

FBC, Ponca/Trinity Baptist Ada #735

Falls Creek Conference Center

6714 HWY 77D

Davis, OK 73030-8002

NEED TO PICK UP CHILD EARLY?

(FIRST, PLEASE LET FBC KNOW YOU ARE PICKING UP EARLY)

▪ Parent arrives at gate.

▪ Parent informs gate attendant of child pick up and provides the:

▶ Child's name

▶ Name of the church with which they are attending

▶ Cabin name or number, in which the church is staying (Trinity, Ada #735)

▪ Parent is then assigned a parking space just outside the gate at a numbered station. There will be five parking spaces along the fence of our Main Gate area, numbered 1-5.

Falls Creek Camper Schedule

Monday

- 8:00 AM Load Luggage
- 8:45 AM Camper Meeting in Chapel
- 9:00 AM Roll Out for Falls Creek (Lunch in Moore)
- 5:30 AM Dinner — "TWINSgiving"
- 6:50 PM Leave for Tab
- 7:00 PM Pre-Session Entertainment/Camp Orientation
- 7:30 PM Evening Worship Service
- 9:00 PM Youth Camp Late Night (CHECK FC SPECIAL EVENTS)
- 10:15 PM In Cabin

Tuesday - Friday

- 8:00 AM Breakfast
- 8:45 AM Quiet Time
- 9:00 AM Game Time
- 9:45 AM Story Time w/ Joel
- 10:00 AM Small Groups
- 10:20 AM Clean Up Cabin and Dorms
- 10:40 AM Leave for Morning Tab
- 11:00 AM Morning Worship Service in Tab
- 12:00 PM Lunch
- 1:00 PM Breakouts, Missions & Recreation (CHECK FC SPECIAL EVENTS)
- 5:30 PM Dinner — Tuesday: "Happy BD 'Merica" / Wednesday: "Thrifty Prom"
Thursday: "Camp Shirt" / Friday: "Neon Dreams"
- 6:50 PM Leave for Tab
- 7:30 PM Evening Worship Service
- 9:00 PM Youth Camp Late Night (CHECK FC SPECIAL EVENTS)
- 10:15 PM In Cabin

Saturday

- 8:00 AM Bags Downstairs
- 8:15 AM Breakfast
- 8:30 AM Clean through the cabin, bathrooms, etc...
- 9:00 AM Leave Camp
- 12:30 PM Approximate Arrival Home

DRESS CODE

Churches participating in Falls Creek should fully communicate the dress code to students BEFORE they pack and arrive for camp. While we understand the desire for fashionable attire, we require you to wear modest clothing. Modesty is a biblical principle and helps keep people focused on the important things at camp. (1 Timothy 2:9-10; 4:12)

All apparel judgments will be left to the discretion of the Falls Creek Staff (FCS). If FCS determines a camper or campers should change their clothing to fall in line with camp requirements, then said camper or campers are required to do so

GENERAL GUIDELINES

Shoes must be worn at all times outside of your cabin.

Apparel may not display or promote tobacco, alcohol, controlled substances, or inappropriate language or pictures.

Under garments must always be covered by outer garments (i.e., No boxer shorts hanging out or bra straps showing).

Midriffs should always be covered.

No spaghetti strap shirts or dresses.

No tank tops or shirts cut down the sides.

No short shorts. Modest length shorts must extend to just beyond, the campers' fingertips, which in general is no shorter than 5-7 inch inseam.

No tight fitting and revealing clothing. This includes leggings or similar attire, which cannot be worn as pants.

Girls may wear dresses/skirts, but they must reach the top of the knee.

SWIMMING

Girls should wear modest one-piece swimsuits.

Males should not wear tight fitting swimming suits.

While going to and from the swimming areas, all campers must wear shoes; males must wear a t-shirt and females must wear a long covering over their swimming suits.

CLEAR BAG POLICY

Only clear backpacks or clear large bags will be allowed through bag check at the tabernacle and event center.

PARENTS:

If we have discipline issues that result in your child needing to go home, you will be responsible for picking them up in a timely fashion.

FALLSCREEKYOUTH CAMP DRESS CODE

All apparel judgements will be left to the discretion of the Falls Creek Staff (FCS). If FCS determines a camper or campers should change their clothing to fall in line with camp requirements, then said camper or campers are required to do so.



ACCEPTABLE



UNACCEPTABLE



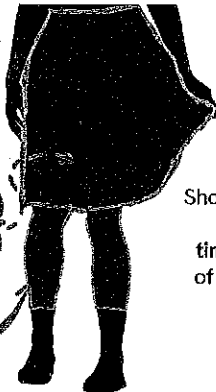
**ALWAYS
ACCEPTABLE
SHIRTS**

Shorts must be modest. Modest can be generally defined as extending to just beyond the finger tips or a 5" to 7" inseam.

Sleeveless shirts must extend all the way to the shoulder seam.



Dresses/Skirts must reach the top of the knee.



Shoes must be worn at all times outside of your cabin.



Fights may be worn under a garment that meets the dress code. No tight fitting or revealing clothing. This includes leggings or similar attire, which cannot be worn as pants.

SWIMWEAR

If shirt is not covering it, must be worn in addition to swimwear pants.



male

Should wear swimsuits of modest length (fingertip) and not-tight fitting.



female

Modest one-piece



male

No short shorts or tight-fitting shorts



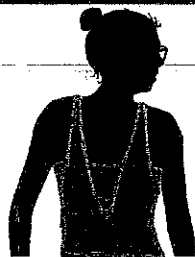
female

No two-pieces

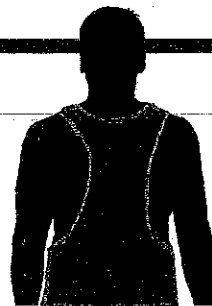
Camper may not be barefoot on the way to and from venues.



No tank tops or shirts cut down the sides.



Undergarments must always be covered by outer garments (i.e. no boxer shorts hanging out or bra straps showing).



No Midriffs/racer backs. No sport bras as tops (includes the 5K).



No spaghetti strap tank tops/dresses.

No spaghetti strap tank tops/dresses.

Apparel may not display tobacco, alcohol, controlled substances, or inappropriate language or pictures.

WHAT NOT TO WEAR

RECREATION OVERVIEW

"THE QUAD" ZIP LINES

- Monday:
2:00pm - 4:45pm
- Tuesday - Friday:
1:30-4:45pm

SWIM TIMES & VENUES

GIRLS' TIMES

BAPTIST LAKE (LAKE PARK & WATER SLIDES):

Monday 2:00 - 4:45pm

Wednesday & Friday 1:30 - 4:45pm

ENTRY CREEK (INFLATABLE GAMES):

Tuesday & Thursday 1:30 - 4:45pm

BOYS' TIMES

ENTRY CREEK (INFLATABLE GAMES):

Monday 2:00 - 4:45pm

Wednesday & Friday 1:30 - 4:45pm

BAPTIST LAKE (LAKE PARK & WATER SLIDES):

Tuesday & Thursday 1:30 - 4:45pm



VOLLEYBALL DIVISIONS & TEAMS

VOLLEYBALL DIVISIONS

BLUE - YOUTH GUYS

4-9 Players | Players must be students, no adult leaders

PINK - YOUTH GIRLS

4-9 Players | Players must be students, no adult leaders

GREEN - MIDDLE SCHOOL COED

4-9 Players | Players must be students who just completed 6th - 8th grade, no adult leaders

PURPLE - HIGH SCHOOL COED

4-9 PLAYERS | Players must be students who just completed 9th - 12th grade, no adult leaders

RED - FOUR-ON-FOUR

Max of 5 players, high competition | Players can be male, female, student, or adult leaders but must be from the same church

ORANGE - ADULT LEADERS (FRIDAY ONLY)

4-9 Players | Players can be a mixture of male or female adult leaders with up to two students

NUMBER OF TEAMS

BLUE / PINK / GREEN / PURPLE

One team for 4-59 students

Two teams for 60-110 students

Three teams for over 110 students

RED / ORANGE

Two teams from each church are allowed. More teams can be added on Monday at late night registration, if bracket space allows.

NO ADVANCE SIGN UP!

RIVERFRONT

- Open Horseshoes
- Three Point Shoot-out
- Open Disc Golf
- Open Play Volleyball (After 3pm Tuesday - Friday)
- Adventure Park (Ropes Challenge)
- Tango Tower (High Ropes Challenges)

PRICE'S FALLS

- Bouldering Wall
- Pickleball

THE AMP

- SwiftSkate
- GagaBall
- Cornhole
- 9 Square
- Giant Chess/Checker
- Ping Pong/Jungle Pong

OTHER

- Swimming - Entry Creek, Baptist Lake
- 5K Run/Fun Run - Jordan Welcome Center (6:15AM WRISTBANDS PASSED OUT, 6:45AM FUN RUN BEGINS, 6:50AM 5K BEGINS.)
- "The Quad" Zip Lines - Rounds Corner

ADVANCE SIGN UP!

AT ON-SITE REGISTRATION OR ONLINE

- Kickball
- All Volleyball Divisions

AT DAILY ADULT LEADER MEETING

- Group Challenges on Ropes Course (Low Ropes)

AT THE REC HUT

- Disc Golf Tournaments
- Horseshoe Tournaments
- 3 on 3 Basketball Tournaments
- Three Point Shoot Out

AT THE AMP

- Cornhole Tournaments
- Ping Pong Tournament
- Jungle Pong Tournament
- Falls Creek Open (Skateboard Contest)



SPECIAL EVENTS:

MONDAY

- 1:00-4:00PM Church Pin Design Contest (drop off) - Registration
- 1:00-4:00PM Cabin Décor Contest Sign-Up - Registration
- 6:30PM Invitation Training - Massey Chapel
(exterior doors open at 6:15pm)
- 9:00PM Open Skate & Recreation - SwiftSkate Park
- 9:00PM Rec in the MEC: MEGA-GAME NIGHT! - MEC

TUESDAY

- 6:15AM Daybreak - MEC Main
- 2:00-3:00PM Cabin Décor Contest Judging
- 2:00PM Pastors Reception with Dr. Fisher - MEC 102
- 6:30PM Invitation Training - Massey Chapel
(exterior doors open at 6:15pm)
- 7:15PM Adult Leadership Investment (ALI) - Massey Chapel
- 9:00PM OBU on the Plaza
- 9:00PM Open Skate & Recreation - Swiftskate Park

WEDNESDAY

- 2:00-2:45PM T-shirt / Standard Contest - Missions Outpost
- 3:00PM BCM Pin Trading Party - South Lobby of the Tabernacle
- 7:00PM Women in Youth Ministry Meet-up - North Decision Room
- 7:15PM Parent Training Event - Chapel
- 9:00PM Apologetics Forum - MEC Main
- 9:00PM Block Party - Centennial Plaza
- 9:00PM Open Skate & Recreation - SwiftSkate Park

THURSDAY

- 4:30PM Falls Creek Cook Off Drop Off - MEC
- 9:00PM Falls Creek Live! - Centennial Plaza
- 9:00PM Missions Late Night - South Lawn
- 9:00PM Open Skate & Recreation - Swiftskate Park
- 9:00PM Rec in the MEC: PICKLEBALL - MEC

FRIDAY

- 2:00PM Switch Tourney - MEC
(Both Tourneys Back to Back)
- 9:00PM Open Skate & Recreation - SwiftSkate Park
- 9:00PM Rec in the MEC: SNOWSTRAVAGANZA! - MEC

