



36th Annual



Strawberry Festival

May 14, 1983

Stilwell, Oklahoma



Queen
Brenda Lawrence

Kiwanis sponsors Festival

The Stilwell Kiwanis Club, which has sponsored the Strawberry Festival ever since its inception, has had an unbroken tradition of community service since it was chartered 37 years ago.

The Club, which meets for lunch each Tuesday, is among the 7,273 clubs in Kiwanis Clubs International. The organization has a membership of 291,221 and includes clubs in 61 nations and geographical areas.

Under the motto of "We Serve," the Stilwell Kiwanis Club sponsors such diversified activities as the Boy Scouts and the annual Strawberry Festival.

The club donates several thousands of dollars each year to various community programs, as well as hundreds of man hours.

Club members participate in fund raising activities such as "Pancake Day" which is traditionally held the morning of the first day of deer season.

The Club also sponsors a concession stand during the summer, at the city's ball park.

After 37 years the Stilwell Kiwanis Club continues to live up to its motto, "We Serve."



Jack Kay
Stilwell Kiwanis
Club President

About the cover

Official photograph of Miss Brenda Lawrence who will be crowned queen of the 36th annual Strawberry Festival on May 14.

The cover was made possible through the contribution of Stilwell Foods, Inc.

This page made possible through the
contributions of the following:

ZERO MOUNTAIN, INC.
Fayetteville, Arkansas

MEANS FRUNITURE, INC.
Jerry and Ann Means

SUPERIOR FROZEN FOODS
Watsonville, Calif.

FARMERS COOPERATIVE
Feed and Fertilizer

Welcome to the Festival

Jim Carson
Vice-President

James F. Carson
Joe H. Carson
Joe L. Carson
Charles W. Crozier
Hershal Dotson
Berry Ferguson
John H. Freeman
William M. Gilbreath

IGA WAREHOUSE
Dale & Mary Re

JIM DANDY DR
Betty Carter & Al

SEARS-ROEBUC
Jack Guffer

JIM HOPKINS FO
Stilwell, Oklah

Welcome to the Festival

The Stilwell Kiwanis Club and I take this means in welcoming you to our 36th annual Stilwell Strawberry Festival.

Many events will be highlighting the day. The featured entertainment will be Jana Jae. Other events of the day will include the parade, the Festival Luncheon, the Strawberry Auction, free serving of strawberries and short cake, and the Stilwell Roundup Club Rodeo.

Join with us in this celebration in the Strawberry Capital of the World!

Jack Kay
President
Stilwell Kiwanis Club



KIWANIS CLUB OFFICERS

Jim Carson Vice-President	Charles Crozier Past President	Dean Jackson Secretary-Treasurer	Joe H. Carson Past Lieutenant-Governor
------------------------------	-----------------------------------	-------------------------------------	---

KIWANIS CLUB MEMBERS

James F. Carson	H.D. Gound	Jerry Means	Jack Smay
Joe H. Carson	J.L. Halford	Nesbert L. Miller	L.T. Spray
Joe L. Carson	Raymond B. Hitson	Hiram McFarland	Cary C. Wyatt
Charles W. Crozier	Andy Inman	Tobe O'Neal	Hubert E. Zimmerman
Hershal Dotson	C. Dean Jackson	Barnes Pemberton	James Roberts
Berry Ferguson	Jack E. Kay	Bob Ray	Mel Bookout
John H. Freeman	Larry D. Lane	Dale Rowan	John Garrett
William M. Gilbreath	Sam O. Love	Robert W. Rowley	Daniel D. Smith

This page made possible through the
contributions of the following:

IGA WAREHOUSE MARKET

Dale & Mary Rowan

JIM DANDY DRIVE-IN

Betty Carter & Alta Clinton

SEARS-ROEBUCK & CO.

Jack Guffey

JIM HOPKINS FORD, INC.

Stilwell, Oklahoma

STILWELL AUTO SUPPLY

Lula Mae Hurlbut

J.R. PENICK, JR.

Grower, Packer & Shipper of Sweet Potatoes

NORTHSIDE BODY SHOP

Unger Brothers

WALDRON TRUCK LINES, INC.

Daily Service to Stilwell



1983 Queen Brenda Lawrence and her attendants, Miss Louise Loyd, left, and Miss Tammy Lynn Keeter.

The new Queen

Miss Brenda Lawrence, 17, a junior at Stilwell High School, will be crowned queen of the 1983 Strawberry Festival on May 14.

The daughter of Mrs Rachel Lawrence of Stilwell, she is a baton twirler with the Stilwell High School Band and also plays the trumpet, is a member of the Reflections, the SHS Stage Band, Key Club, Indian Heritage Club, and Speech Club.

Earlier this year, she was chosen SHS Band Queen and local winner of the American Beauty Pageant.

Her attendants are Miss Louise Loyd, 17, daughter of the Rev and Mrs Azle Loyd of Bunch, who was chosen first runnerup in the March 10 competition; and Miss Tammy Lynn Keeter, 17, daughter of Mr and Mrs Gus Keeter of Route 4 Stilwell.

This page made possible through the contributions of the following:

"The Friendly"
BANK OF COMMERCE

STILWELL AREA CHAMBER OF COMMERCE
"Always Planning for Stilwell's Future"

Bob R
Entertainment
National Anthem
Invocation
Flay Salute
36th Annual Strawberry F
Introductions of Special G
Jack
Crowning of Strawberry F
Kiwanis Luncheon
Headline Entertainment .
Awards to Champion Str
Strawberry Auction
Free Strawberries and Sh
Entertainment
The
Entertainment
Festival Pow-Wow, FRU
Rodeo—Thursday, Friday
S

BERT'S 66 SERVICE
Stilwell, Oklah

ROCK'S IRON & M
"Slim", James and

THE JACK R
Welcome Visit

Tom

Program

May 14, 1983

Bob Ray and Guy Atchley, Masters of Ceremonies

Entertainment	9:00 a.m.
The Reflections	
National Anthem	10:00 a.m.
Miss Shawna Morton	
Invocation	10:05 a.m.
Rev. Mel Bookout	
Flay Salute	10:10 a.m.
Stilwell Cub Scouts of Den 7	
36th Annual Strawberry Parade	10:15 a.m.
Rep. Larry Adair, Parade Marshal	
Introductions of Special Guests	11:50 a.m.
Jack Kay, Stilwell Kiwanis Club President	
Crowning of Strawberry Festival Queen for 1983	12:00 noon
Kiwanis Luncheon	12:30 p.m.
Doss Stilwell Cafeteria	
Headline Entertainment	12:30 p.m.
Jana Jae and her band, Haywire	
Awards to Champion Strawberry Growers	2:45 p.m.
Strawberry Auction	3:00 p.m.
Jerry Means, Auctioneer	
Free Strawberries and Shortcake	3:30 p.m.
Entertainment	3:30 p.m.
The Rainbow Jazz with the Popsicle Jazz	
Entertainment	4:30 p.m.
Ted Stevenson and His Family Band	
Festival Pow-Wow, FRU Mabee Center	6:00 p.m.
Rodeo—Thursday, Friday and Saturday, May 12, 13, 14	8:00 p.m.
Sponsored by Stilwell Round-up Club	

This page made possible through the
contributions of the following:

BERT'S 66 SERVICE STATION

Stilwell, Oklahoma

ROCK'S IRON & METAL CO.

"Slim", James and Jane

THE JACK RIDERS

Welcome Visitors

RICHARD JOHNSON PLUMBING

Phone 696-3302 — Stilwell

G. & R. SUPPLY COMPANY

918-682-7430 — Muskogee

NSU

Northeastern State University

THOMAS QUALITY CLEANERS

Tom & Christine Bartsch — 112 S. 2nd — 696-6880



First place in civic category of the 1982 Strawberry Festival was won by the Cherokee Nation, marking the fourth straight year for the Cherokee Nation to win first.

Ideal weather in 1982

Ideal weather—sunny and mild—helped attract a huge crowd to Stilwell's 35th annual Strawberry Festival last year.

Some said the crowd was the largest in the history of the event, but there was no scientific way to tell for sure. Estimates varied all the way from 25,000 to 30,000.

The size of the crowd was also helped by hundreds who had come to Stilwell specifically for the All-School Reunion, the Festival Rodeo, and the Festival Pow-Wow.

In addition to the parade and strawberry auction, the day's events included the crowning of the Festival Queen, Miss Monica Martinez, music, carnival, arts and crafts shows, the Pow-Wow, Festival Rodeo, and the All-School Reunion.

Judges named these parade winners:

FLOATS

CIVIC—1st, Cherokee Nation; 2nd, Stilwell Future Farmers of America Chapter; and 3rd, Stilwell 4-H Club.

COMMERCIAL—1st, Cherokee Nation

This page made possible through the contributions of the following:

CONSOLIDATED PROCESSING SERVICE

Watsonville, Calif.

HERMAN JONES — REX TONEY

Okla. Farm Bureau Mutual Ins. Co.

TOM J. CARSON

Insurance Agency

Industries; 2nd, Stilwell Future Farmers of America Chapter; 3rd, Stilwell Bank of Commerce.

RELIGIOUS—1st, Rock Church.

SCHOOL BANDS

CLASS AA—1st, Fort Vian.

CLASS A—1st, Morris;

JUNIOR HIGH—1st, Fort Catoosa.

Other bands in the parade included Jay, Arkoma, Checotah, Catoosa, and Stilwell.

Jim Carson served as parade master and Ed Brocksmith of Tahlequah led the parade over the public square for the crowd.



Cherokee Nation Industries Float riders included Leda Christie, Lynda Ross, and

DOY'S STATE

Stilwell, Okla.

OKLAHOMA C & EQUIPMENT

FLETCHER'S HARDWARE

Phone 696-7500

STATE FARM INSURANCE

696-4114

Industries; 2nd, Stilwell Foods, and 3rd, Bank of Commerce.

RELIGIOUS—1st, Rock Springs Baptist Church.

SCHOOL BANDS

CLASS AA—1st, Fort Gibson; 2nd, Vian.

CLASS A—1st, Morris; 2nd, Westville.

JUNIOR HIGH—1st, Fort Gibson; 2nd, Catoosa.

Other bands in the parade were from Jay, Arkoma, Checotah, Clyde Boyd, and Stilwell.

Jim Carson served as parade marshal, and Ed Brocksmit of Tahlequah narrated the parade over the public address system for the crowd.

The parade had an estimated 250 horses in the line of march, the Muskogee Civil Air Patrol color guard, Kim Swimmer, Tahlequah High School's Indian Heritage Club princess, numerous school queens, Christie's Cub Scout Pack, Miss Phyllis Dixon, princess of the Talking Leaves Job Corps, Indian Pow-Wow Princess Diane Paddlety who is a Kiowa-Cherokee, and several racing cars from the Crawford County Speedway.

Also in the line of march were Gov George Nigh, Cindy Parker, Stilwell FFA sweetheart, television personalities from Channel 8 in Tulsa, and several cars from the 1950s.



Cherokee Nation Industries of Stilwell had the No. 1 float in the commercial division last year. Float riders included Leda Owl, Susan Kester, Tina Fuson, Gina Miller, Teresa Fowler, Pam Christie, Lynda Ross, and Sharon Spence.

This page made possible through the contributions of the following

DOY'S STATION
Stilwell, Oklahoma

**OKLAHOMA GAS
& EQUIPMENT**

FLETCHER'S HARDWARE
Phone 696-7500

STATE FARM INSURANCE CO.
696-4114

J.M. SWANK CO., INC.
Iowa City, Iowa

STILWELL CARPET SHOP
696-5453 — 107 W. Division — Stilwell

CHRISTIAN FAMILY BOOK STORE
119 W. Plum Street

COLLINS FIRESTONE
Tires — Mufflers — Philco TV



Gov. George Nigh, right, riding with Jimmy Leake in one of Leake's antique autos.

POW-WOW PLANNED

The fourth annual Strawberry Festival Pow-Wow will be held, starting at 6 p.m. on May 14, at Flaming Rainbow University's Mabee Center, formerly Stilwell High School.

TO ANNOUNCE PARADE

Guy Atchley, Channel 8 television personality from Tulsa, will be the announcer for the 1983 Strawberry Festival parade.

STARTED IN 1948

The Strawberry Festival dates back to 1948 when the Stilwell Kiwanis Club decided to do something about stimulating interest in one of Adair County's economic resources.

SECOND SATURDAY

The Strawberry Festival is held in Stilwell on the second Saturday of May each year.

STILL IN OPERATION

A water wheel, known as Golda's Old Mill, located at Biting Springs off SH 51 west of Stilwell, is more than 100 years old. The wheel still provides power for grinding corn, just as it did for the Indians and settlers.

NAMED FOR ARTHUR STILWELL

Stilwell was named for Arthur Edward Stilwell who built the Kansas City Southern Railway, founded several dozen hamlets and villages, and created a city, Port Arthur, Tex., named for himself.



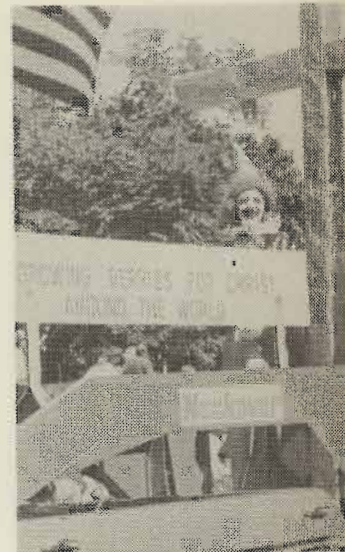
Queen of 1981 Festival, Stephanie Goodall, rode on the Stilwell Kiwanis Club float with Charles Crozier, club president, and his daughter, and Kiwanis Gov. Bill Ayres, right, and his wife, left.

This page made possible through the contributions of the following:

**GARRETT CHEVROLET
and OLDS. CO., INC.**

PEMBERTON REAL ESTATE
Farms — Ranches — Homes

JONES TRUCK LINES, INC.
Springdale, Arkansas



Top float in the religious parade. Riding the float were the Rev. Hickman, Kendra and Joseph Hickman, and Matthew Smith.



Second place in the civic parade. Future Farmers of America Charlene FFA sweetheart, and her attendant.

PENNWALT CORPORATION
Food Plant Cleaning Chemicals

COUNTRY LUMBER
Neal Johnson, Manager

REASOR'S DISCOUNT
"We Sell For Less"

S-
We



Top float in the religious category in 1982 was entered by the Rock Springs Baptist Church. Riding the float were the Rev and Mrs Harvey Hickman, Angela Hickman, Lisa Gore, Amy Hickman, Kendra and Joseph Funburg, Danya Hendricks, Tommy Vardeman, Andrea Bynum, and Matthew Smith.



Second place in the civic division of the 1982 Strawberry Festival Parade was won by the Future Farmers of America Chapter at Stilwell High School. Riding on the float were Cindy Parker, FFA sweetheart, and her attendants, Sherry Horn and Sherri English.

This page made possible through the
contributions of the following:

PENNWALT CORPORATION

Food Plant Cleaning Chemicals

COUNTRY LUMBER CO.

Neal Johnson, Manager

REASOR'S DISCOUNT FOODS

"We Sell For Less"

ANDERSON WHOLESALE CO.

Non-Food Dist. — Muskogee, Okla.

AMERICAN PROPANE CORP.

Hwy. 59 N. — Stilwell

STILWELL MERCANTILE

Burnell Isaacs, Manager

S-H PARTS & EQUIP. HOUSE, INC.

Wats No. 800-632-0050 — Springdale, Ark.



Stilwell Foods, Inc., exhibited the second place winner in the commercial division of the 1982 parade.



Bank of Commerce of Stilwell won third place in the commercial division of the 1982 Festival Parade.

This page made possible through the
contributions of the following:

OZARKS ELECTRIC COOPERATIVE
"Consumer-Owned Utility"



BILL'S AUTO PA
713 N. Second St., S

BEACON DRIVE
Fast Food Service — Call in

REX'S HOUSE
of BARGAIN
ADAI



1982 Queen Monica Martinez, second from left, after she was crowned by Kiwanis Gov. Bill Ayres. At left is the 1981 queen, Miss Stephanie Goodall. The 1982 queen's attendants are Miss Lynda Ann Hudgins, second from right, and Miss Karen Potter, right.

This page made possible through the contributions of the following:

BILL'S AUTO PARTS

713 N. Second St., Stilwell

BEACON DRIVE-IN

Fast Food Service — Call in Early 696-3538

**REX'S HOUSE
of BARGAINS**

ADAIR COUNTY LIVESTOCK AUCTION, INC.

Harold Williams and Randy Roller

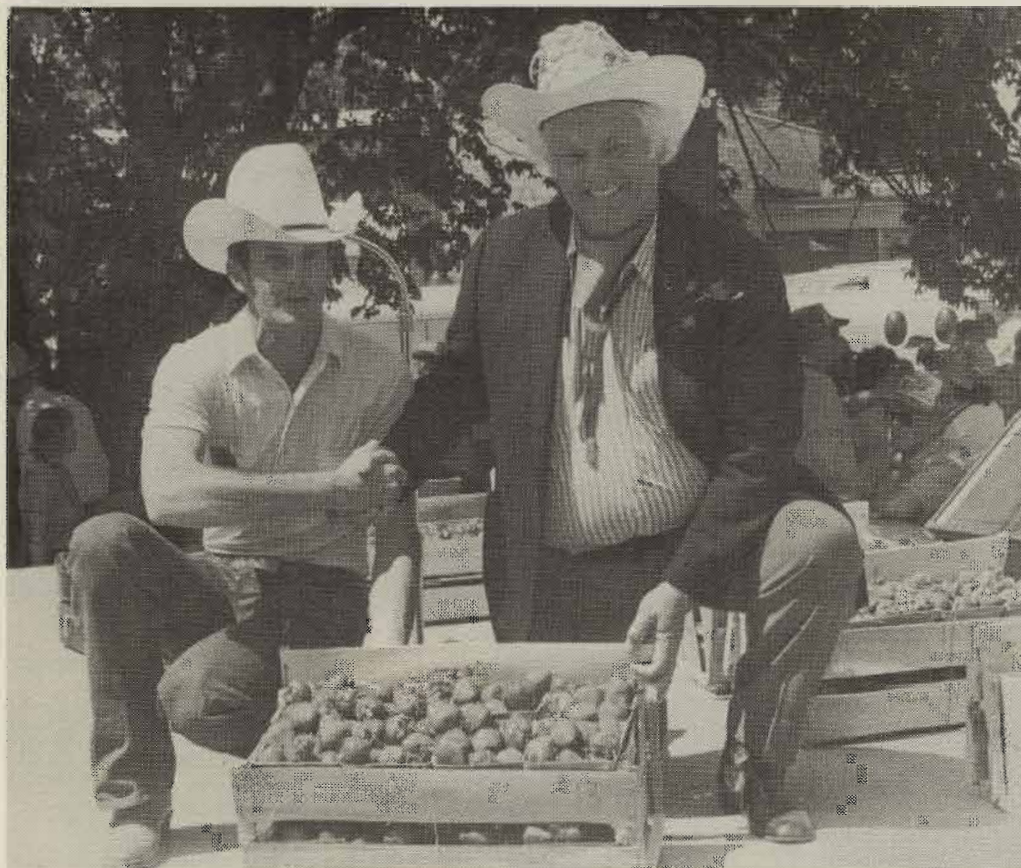
CIRCLE INN MOTEL

696-7022

ACE HARDWARE

Ace, Duce and Tray

**SHIRLEY'S NORTHSIDE
DRIVE-IN**



Championship crate of Cardinal strawberries, exhibited by O.D. Hooper and Son of Route 1 Bunch, brought \$3,200 at the 1982 auction from the Razor Clam Restaurant in Tulsa. Here, Jimmy Leake, right, owner of the restaurant, shakes hands with William D. Hooper following the auction.

No records last year

No records were set at the strawberry auction in 1982 even though the 16 crates brought a total of \$6,755—or \$422.19 per crate.

The championship crate of Cardinal berries, exhibited by O.D. Hooper, Route 1

Bunch, brought \$3,200 which is \$400 less than the top crate brought in 1981.

The buyer was the Razor Clam Restaurant in Tulsa which is owned by Jimmy Leake, at that time owner of Channel 8 television station.

This page made possible through the contributions of the following:

C.J. CARSON
Insurance Agency
COCA-COLA BOTTLING CO.
of Fort Smith, Arkansas
STILWELL
Democrat-Journal

Twelve of the 16 crates of contest and auction were Cardinal, Atlas, and two Sunrise.

The total sale of \$6,755 was \$2,000 less than 13 crates brought ago when the auction totaled an average per crate was \$678.

This marked the seventh year that Leake, or a representative, bought the championship berries. The first year that the price had been less than the year before.

Jerry Means of Stilwell is the auctioneer.

Places of the other exhibitors with the strawberry variety, the amount paid as follows:

2nd, Homer Hignite, Route 1 Cardinal, Larry Reasor, Tahlequah.

3rd, Robert Bennett, Vinita. Stilwell Foods, \$275.

4th, Barbara Wininger, Route 1 Cardinal, Bank of Commerce.

5th, Donald Vaughan, Route 1 Atlas, IGA Warehouse of Stilwell.

6th, John Auffett of Ada. Chard, Route 2 Stilwell, Cardinal Foods, \$120.

7th, Russell Turner, Route 1 Sunrise, Larry Adair, Stilwell.

8th, Bairds Farm, Route 4 Cardinal, Maytag Securities of Tulsa.

9th, Claude Pack and Bob Pack, 2 Stilwell, Cardinal, Pack Restaurant, \$225.

10th, Marie Mattox, Route 1 Cardinal, Larry Reasor, \$225.

11th, Gladys Woodward, Stilwell, Cardinal, Bank of

OTASCO — STILWELL
Friendly Folks to Serve

ALBERT EQUIPMENT
Caterpillar/Towmotor

RICELAND FOODS
Stuttgart, Arkansas

Twelve of the 16 crates of berries in the contest and auction were Cardinals, two Atlas, and two Sunrise.

The total sale of \$6,755 was more than \$2,000 less than 13 crates brought a year ago when the auction totaled \$8,825. The average per crate was \$678.

This marked the seventh year in a row that Leake, or a representative of his, has bought the championship berries. This is the first year that the price he had paid has been less than the year before.

Jerry Means of Stilwell was the auctioneer.

Places of the other exhibitors are listed with the strawberry variety, the buyer, and the amount paid as follows:

2nd, Homer Hignite, Route 2 Stilwell, Cardinal, Larry Reasor, Tahlequah, \$500.

3rd, Robert Bennett, Vian, Cardinal, Stilwell Foods, \$275.

4th, Barbara Wininger, Route 1 Stilwell, Cardinal, Bank of Commerce, \$400.

5th, Donald Vaughan, Route 3 Stilwell, Atlas, IGA Warehouse of Stilwell, \$200.

6th, John Auffett of Adair County Orchard, Route 2 Stilwell, Cardinal, Stilwell Foods, \$120.

7th, Russell Turner, Route 4 Stilwell, Sunrise, Larry Adair, Stilwell, \$150.

8th, Bairds Farm, Route 4 Stilwell, Cardinal, Maytag Securities of Tulsa, \$430.

9th, Claude Pack and Bob Braden, Route 2 Stilwell, Cardinal, Razor Clam Restaurant, \$225.

10th, Marie Mattox, Route 1 Stilwell, Cardinal, Larry Reasor, \$225.

11th, Gladys Woodward, Route 4 Stilwell, Cardinal, Bank of Commerce,

\$250.

12th, Lester Turner, Route 4 Stilwell, Cardinal, Razor Clam Restaurant, \$240.

13th, Ray Hitson, Route 3 Stilwell, Atlas, Cherokee Nation Industries, \$175.

14th, Harold Walters, Route 3 Muldrow, Cardinal, Stilwell Democrat-Journal, \$125.

15th, George Buckner, Route 2 Stilwell, Sunrise, Larry Reasor, \$100.

16th, Bruce Wheeler, 1313 S. Third St., Stilwell, Cardinal, Stilwell Foods, \$140.



Rick Kamp, right, manager of the Razor Clam Restaurant, flanked by the restaurant's owner, Jimmy Leake, raising the bid at the auction.

ADDED ATTRACTION

An added attraction at the 1983 Strawberry Festival will be a colorful hot air balloon furnished by KTUL-TV, Tulsa.

This page made possible through the contributions of the following:

OTASCO — STILWELL

Friendly Folks to Serve You

ALBERT EQUIPMENT — TULSA

Caterpillar/Towmotor Forklifts

RICELAND FOODS

Stuttgart, Arkansas

CAIN'S COFFEE COMPANY

Merle Faulkenberry, Representative

STILWELL CAFE

Dolly Kester

ISAACS' CONOCO STATION

Norman and David Isaacs

LLOYD & PAT COLE

Hi, You-All



Thousands of free cups of strawberries and ice cream were served to Strawberry Festival visitors last year. Above are some of the girls who served the berries and ice cream.



This page made possible through the
contributions of the following:

PRESTON REFRIGERATION CO.

Fort Smith, Arkansas

AAA ABSTRACT CO., INC.

Nancy Garrett, manager, Stilwell

VIP SALES COMPANY, INC.

6349 S. Memorial, Tulsa, Okla.

MR B'S PIZZA

Charles and Debbie Bennett

SHARPE'S DEPARTMENT STORE

Stilwell, Oklahoma

JEAN'S FASHIONS

Merle Norman Cosmetics

SHELTER INSURANCE

Larry O'Neal — 696-3700

Appea

With a zap of energy, a mind-boggling speed of h Jana Jae hits the stage—a reaction is electrifying. It is qualities of raw enthusiasm and musicianship that make Jana Ja of Country Fiddle."

Jana's musical roots run deep. Her parents studied at the fame



of Music in New York City. Jana to the violin at the early age of five, Jana, who became amazingly adept at the violin, moved with her mother to Idaho. It was here that she was introduced to country fiddling and was captivated with the style.

Even though country fiddling is a love, Jana still continued her

Appears here May 14

With a zap of energy, a blue flash, and the mind-boggling speed of her dancing bow, Jana Jae hits the stage—and the audience reaction is electrifying. It is these combined qualities of raw enthusiasm and pure musicianship that make Jana Jae "The First Lady of Country Fiddle."

Jana's musical roots run deep. Both of her parents studied at the famed Juilliard School



of Music in New York City. They introduced Jana to the violin at the early age of two. At the age of five, Jana, who had already become amazingly adept on her ½-sized violin, moved with her mother to western Idaho. It was here that she was first introduced to country fiddling and was immediately captivated with the style.

Even though country fiddling was her great love, Jana still continued her classical violin

training.

It was in 1974 when Jana finally got her big break. At a Buck Owens' concert in Redding, she was invited to take the stage and play "Orange Blossom Special" with the late Don Rich. The audience reaction was so overwhelming that within two months Jana became the first female member of the Buckaroos. With Buck, Jana gained her first real national and international exposure. She became a regular on the Hee Haw Show and was seen bowing her gleaming blue fiddle on tours in Japan, Australia and the Phillipines. Her association with the Buckaroos ended in 1977 with her much-publicized three-day marriage to Buck Owens and his subsequent nationwide "ad campaign" to win her back.

It was at this point that Jana launched her solo career, which has proceeded to soar upward. Her unique blend of country fiddling, western swing and classical styles have continued to thrill and excite audiences internationally. Her diverse background allows her to feel at home playing "pops" concerts with major symphony orchestras as well as playing country concerts at fairs and honky-tonks. She has consistently proved her ability to cross over into other genres at such acclaimed events as the Montreaux Jazz Festival in Switzerland, the Wembley Festival in England and the New Orleans Jazz Festival.

Jana has shown herself to be not only a great instrumentalist but a total performer.

"All I want to do is play good music and make people happy," she says. There's certainly no doubt in anyone's mind that Jana Jae has succeeded in that goal!

This page made possible through the
contributions of the following:

AFCO METALS, INC.

3115 S. Zero St., Ft. Smith, Ark.

MidFirst *Savings & Loan*

Ph. 696-5711 — Stilwell, Oklahoma

HAGY'S HUSHPUPIES

901-632-0953 — Shiloh, Tenn.



Princess and Prince of the 1983 Strawberry Festival are Heather Stilwell, 5, and Shane Garrett, 5.

More Festival royalty

Heather Stilwell, 5, daughter of Jon and Irene Stilwell, is the 1983 Strawberry Princess; and Shane Garrett, 5, son of Jim and Wilma Garrett, is the 1983 Strawberry Prince.

They were chosen at a pageant in March. Twenty-five children, ages 4,5 and 6, competed for the titles.

First runnersup were Kristy Marlin, 4, daughter of Johnny and Sue Marlin; and Stephen Sanders, 6, son of Jerry and Alan-

na Sanders.

Second runnersup were Stephanie Simmons, 5, daughter of Lynn and Brenda Simmons; and Tyrone Goodrich, 4, son of Mrs Helen Goodrich.

The princess and prince receive a large photograph, trophy and crown.

The annual event is sponsored by Soroptimist International of Adair County, a service organization of professional and business women.

This page made possible through the contributions of the following:

THERMAL COLD STORAGE
Tulsa, Oklahoma

PHIL MAHANEY — CUSTOM AUTO PAINTING
Upholstery Shop — 696-4536

CONTAINER CORP. OF AMERICA
Corrugated Containers — Muskogee



Questi

Barring additional cold good strawberry crop is (April 25) this season although temperatures have already varying amounts of dama

A crate of strawberries on Strawberry Festival Day decided at a recent meeti

Growers will be selling the parking lot near the Ad House, as in the past, but early! They go fast.

Pickers will be paid 15

STARR'S DRIVE-IN
Dick and Addie Starr

CHUCK WAGON RESTAURANT
Juanita Stacy

WILSON'S BODY SHOP
Stilwell, Oklahoma

STILWELL FFA CHAPTER
Welcomes You to the Festival



Strawberry patch near Stilwell.

Question mark

Barring additional cold weather, a fair-to-good strawberry crop is expected (as of April 25) this season although sub-freezing temperatures have already done widely varying amounts of damage in this area.

A crate of strawberries will sell for \$20 on Strawberry Festival Day, local growers decided at a recent meeting.

Growers will be selling their berries in the parking lot near the Adair County Court House, as in the past, but buy your berries early! They go fast.

Pickers will be paid 15 cents a quart, or

35 cents for two quarts during the season.

The growers voted to require those entering the strawberry judging contest to use special "Stilwell strawberries" boxes and crates.

RESTROOMS AVAILABLE

Portable restrooms for men and women will be set up in the area of the band stand on Strawberry Festival Day in Stilwell. If you can't find one, ask for information from a Kiwanian or a National Guardsman.

This page made possible through the contributions of the following:

STARR'S DRIVE-IN

Dick and Addie Starr

CHUCK WAGON RESTAURANT

Juanita Stacy

WILSON'S BODY SHOP

Stilwell, Oklahoma

STILWELL FFA CHAPTER

Welcomes You to the Festival

BLACKARD REAL ESTATE

Ph. 696-2990 — Stilwell

MARKET BASKET

Highway 59 North, Stilwell

HALF-PRICE STORE

Every Item 50% Off

STILWELL FLOWER SHOP

Bill & Vinia Presley — 696-2250

CAVINESS STATION

"Your Business Appreciated"

HOLIDAY MOTEL

Hwy. 59 South, Stilwell — 696-7777

WINGFIELD'S GIFT SHOP

Hwy. 59 South, Stilwell, Oklahoma



Pam Ogden
1982 Rodeo Queen



Shelly Swebston
1982 Rodeo Sweetheart

Colorful rodeo scheduled

The colorful Championship Festival Rodeo will open Thursday, May 12 and continue through Saturday, May 14 at the Stilwell Roundup Club's Rodeo arena north of Stilwell on US 59.

This year's show, sanctioned by the International Rodeo Association, will start at 8 o'clock each night. Admission prices are \$3 for adults and \$1.50 for children.

Three hundred or more cowboys and cowgirls will compete for prize money totaling more than \$8,000.

Rodeo events are: bareback bronc riding, team roping, steer wrestling, calf roping, bull riding, girls barrel racing, and saddle bronc riding.

Stock will be furnished by David Bailey Rodeo Co. of Tahlequah.

Large crowds attended all three performances of last year's rodeo. Top money winners were Steve and Terry Crow of Quapaw who competed in team roping. Each won \$454.96 for 8.0 seconds work.

Miss Pam Ogden and Miss Shelly Swebston were chosen queen and sweetheart, respectively, at the 1982 Festival Rodeo. Each received a belt buckle in the horsemanship competition, a saddle and other awards.

Miss Ogden, the 1982 reigning Stilwell Roundup Club Queen, is the daughter of Butch and Suzie Ogden, Stilwell. She is a

sophomore at Stilwell High School. She is active in FCS, 4-H, Pep Club, FBLA, Student Council, and the First National Rodeo Club. She attends the First National Rodeo parade on Saturday, and will ride in the parade over the three night performance of the rodeo. She will then turn over the title to the new Queen, who will be crowned at the Saturday night performance.

Miss Swebston, Stilwell Sweetheart, is the daughter of Jean Ross and Larry Swenson. She is in the fifth grade at Stilwell Elementary School. She is active in basketball, cheerleading, and the 4-H Horse Club. She was crowned as a 1983-84 cheerleader.



Calf-roping is one of the

This page made possible through the contributions of the following:

PARROTT'S JEWELRY STORE
Stilwell, Oklahoma

OLIVE'S SERVICE STATION
Groceries & Service

DAYLIGHT DONUT SHOP
Mr. B's Shopping Center

STRAWBERRY CAPITAL RESTAURANT
Tim Paden, Manager

CLARKLIFT OF TULSA
918-622-7200 — 8118 E. 44th St.

FELTS FAMILY SHOE STORE
Footwear For The Family

WORSHAM'S CARDINAL FOOD STORE
Stilwell, Oklahoma

WAL-MART
Hwy. 100 W.

CHEROKEE
Highway

sophomore at Stilwell High School and is active in FCS, 4-H, Pep Club, FHA, Key Club, FBLA, Student Council and Speech Club. She attends the First Baptist Church. She will ride in the Strawberry Festival parade on Saturday, and will also reign over the three night performances at the rodeo. She will then turn her title over to a new Queen, who will be announced during the Saturday night performance.

Miss Swepston, Stilwell Roundup Club Sweetheart, is the daughter of Jerry and Jean Ross and Larry Swepston, Stilwell. She is in the fifth grade at Zion School, and is active in basketball, chorus, 4-H and the 4-H Horse Club. She was recently chosen as a 1983-84 cheerleader at Zion school.

Shelly will ride at the Queen's side in the Strawberry Festival parade and will also reign over the three night performances of the rodeo. She will then turn her title over to a new Sweetheart.

Miss Ogden and Miss Swepston represented the Stilwell Roundup Club at rodeos in Siloam Springs, Ark., Lincoln, Ark., Westville, Tahlequah and Sallisaw. They also attended Western Day at the Stilwell Public Library and talked about running for their positions, meeting a lot of nice people and how much they really enjoyed representing the Stilwell Roundup Club throughout their reign.

Their successors will be announced at the final performance of this year's Rodeo.



Calf-roping is one of the most popular events at the Strawberry Festival Rodeo each year.

This page made possible through the
contributions of the following:

WAL-MART DISCOUNT CITY, STILWELL

Hwy. 100 W., Stilwell, Okla. 696-3141 — We Care

CHEROKEE NATION INDUSTRIES, INC.

Highway 51 West, Stilwell, Oklahoma

Luncheon at school

The Cafeteria at the new Stilwell High School will be the site for the annual Strawberry Festival luncheon at 12 o'clock noon on May 14.

Guest speaker will be Jerry Conrey, district manager for U.S. Rep. Jim Jones, Democrat of Tulsa.

Tickets are \$5 each for the luncheon sponsored by the Stilwell Kiwanis Club.

Shuttle buses will transport luncheon guests from the downtown area to the cafeteria located on SH 100 West.

Alumni plan reunion

The third annual all-school reunion will begin at 6 p.m. Saturday, May 14 at the new Stilwell High School building.

To simplify registration, room assignments will be made at the door. Each class will choose its own chairman to register and collect dues. Dues are \$5—or \$2 for those on fixed incomes. The money will be used to defray expenses for the reunion and to establish a scholarship fund.

The program will begin at 7:15 p.m. in the new cafeteria located back of the high school.

Several classes are planning extra events, but plan to meet in the new high school and will adjourn for the all-school program.

Refreshments will be available in the lobby for all guests.

The reunion is open to anyone who has attended Stilwell schools, and their guests.

DEER, ELK, BUFFALO

Deer, elk, buffalo were the first grazing animals recorded in this area by Washington Irving in his book, "Tour of the Prairie," written in 1822.

FIRST-RATE

This is first-rate travel country, mainly because you'll find Adair County residents friendly and helpful and proud of their picture-book scenery and historical spots.

This page made possible through the contributions of the following:

BIG JOHN'S PEST CONTROL

John Stacy

STILWELL TRUCK SERVICE

Truck Repairing and Parts

BYNUM'S USED CARS

902 S. Second St.

BRUNER'S AUTO — TRACTOR SUPPLY

Also Used Cars

SCRUGGS

Radio and Television

FLINT MASONIC LODGE NO. 11

Stilwell, Oklahoma

FEEDER'S SUPPLY

Ron Gray, Manager

PEGGY'S FLOWERS

"Flowers for all Occasions"

C-MART

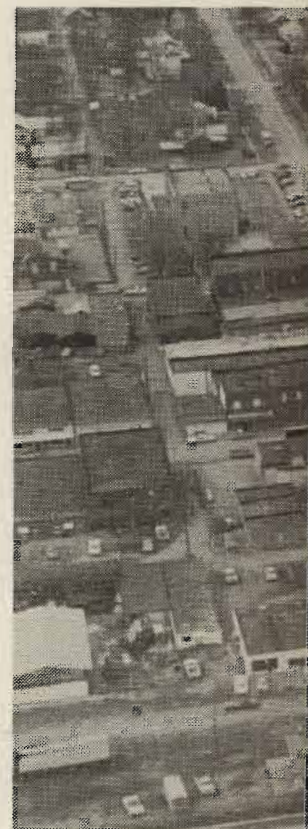
Highway 59 S and SH 100 W

JAY'S LUNCH BOX

Jay and Lucille Wilson

BLACKBURN'S FEED STORE

Marion and Lorene Blackburn — 696-5757



Facts a

POPULATION

(1980 census)—City, 2,3
ty, 18,575.

LABOR FORCE

Male, 2,211; female, 82

TRANSPORTATION

Federal Highways 59 and
Highways 51 and 100. Int
miles south and Interstate
miles north. The Kansas



Downtown area of Stilwell.

Facts about Stilwell

POPULATION

(1980 census)—City, 2,369; Adair County, 18,575.

LABOR FORCE

Male, 2,211; female, 825.

TRANSPORTATION

Federal Highways 59 and 62; and State Highways 51 and 100. Interstate 40 is 30 miles south and Interstate 44 is about 90 miles north. The Kansas City Southern

Railroad, six truck lines and a bus line serve the area. Stilwell also has a city airport with runways of 1,600 and 2,000 feet. A new airport is in the planning stage.

GOVERNMENT

Mayor-City Council. Active volunteer fire department with 20 members. Eight city police officers and eight county officers. Three Oklahoma Highway Patrolmen are stationed here. Stilwell is also home for a

This page made possible through the contributions of the following:

STILWELL LUMBER CO.

Ph. 696-7058 — Building Supplies

OKLAHOMA ALLIED TELEPHONE CO.

Serving Stilwell and Adair County

MEMORIAL HOSPITAL

Visiting Hours: 1 p.m. to 4 p.m. and 6 to 8 p.m.
1400 W. Locust — Stilwell, Okla.



Headquarters building at Stilwell Foods, Inc.

unit of the Oklahoma National Guard.

ORGANIZATIONS

Chamber of Commerce, Stilwell Kiwanis Club, the Ad-Co Kiwanis Club, Garden Club, Roundup Club, Study Club, Soroptimist Club, American Legion and Auxiliary, Veterans of Foreign Wars, Masonic Lodge, Order of Eastern Star, Oddfellows Lodge, Rebekah Lodge, Adair County Quarter Horse Association, Adair County Cattlemen's Association, and seven Adair County Extension Homemakers groups.

INDUSTRIAL FOUNDATION

Stilwell Industrial Foundation, a non-profit organization, stands ready to assist prospective new industries.

RECREATION

Water sports, fishing and picnicking at nearby Lake Tenkiller; small game and deer hunting; Adair Recreation Area, north

edge of Stilwell, includes trailer hookups, small lake for fishing and swimming, plus picnic and camping facilities, baseball and softball diamonds, and children's playground; city swimming pool; tennis courts; two gymnasiums; and movie theatre. Four golf courses are located within a 30-mile radius.

The Stilwell Kiwanis Club and the City of Stilwell sponsor baseball and swimming programs for youngsters in this area.

Stilwell is the home of the Oklahoma championship girls basketball team (2-A) for two straight years—1978 and 1979.

COMMUNICATIONS

Independently owned telephone company offers direct distance dialing, touch tone and mobile dial telephones. Allied Telephone Co. has constructed a new building in Stilwell to handle its continuing

growth.

TELEVISION REC

Five commercial stations. The only commercial station in Tulsa, Oklahoma. Commercial stations in Fort Smith. The system also serves Stilwell.

SPECIAL EVE

Strawberry Festival, D. foliage tours, rodeos and Fair.

HEALTH

The new Memorial Hospital is equipped with 50 beds. The Health Department Building is in Stilwell. The city has five dentists, an osteopath, one orthodontist, one chiropractor. One ambulance operates in Stilwell.

The Stilwell Nursing Home is a facility with 96 beds. A recently constructed.



Stilwell's new library is n

**This page made possible through the
contributions of the following:**

ROBERTS FUNERAL HOME

Serving Adair County Since 1913

FARMERS PRODUCE & MILL

Feed, Seed, Fertilizer

BALLENTINE PRODUCE, INC.

Alma, Arkansas

RADIO SHACK & SNACK BAR

REED'S HARDWARE & FURNITURE

Quentin - Gene

EAGLE THEATRE

Bargain Entertainment

STILWELL TAG AGENT

Sue Coleman — 119 W. Plum

BIG "B" FOOD & DELI

Fresh Bakery Goods — 696-5005

growth.

TELEVISION RECEPTION

Five commercial stations and one educational station in Tulsa, Okla, and two commercial stations in Fort Smith, Ark. A cable system also serves Stilwell.

SPECIAL EVENTS

Strawberry Festival, Dogwood and fall foliage tours, rodeos and Adair County Fair.

HEALTH

The new Memorial Hospital of Stilwell is equipped with 50 beds. The Adair County Health Department Building is located in Stilwell. The city has five M.D.'s, two dentists, an osteopath, one optometrist and a chiropractor. One ambulance service operates in Stilwell.

The Stilwell Nursing Home is a modern facility with 96 beds. An addition was recently constructed.

CLIMATE

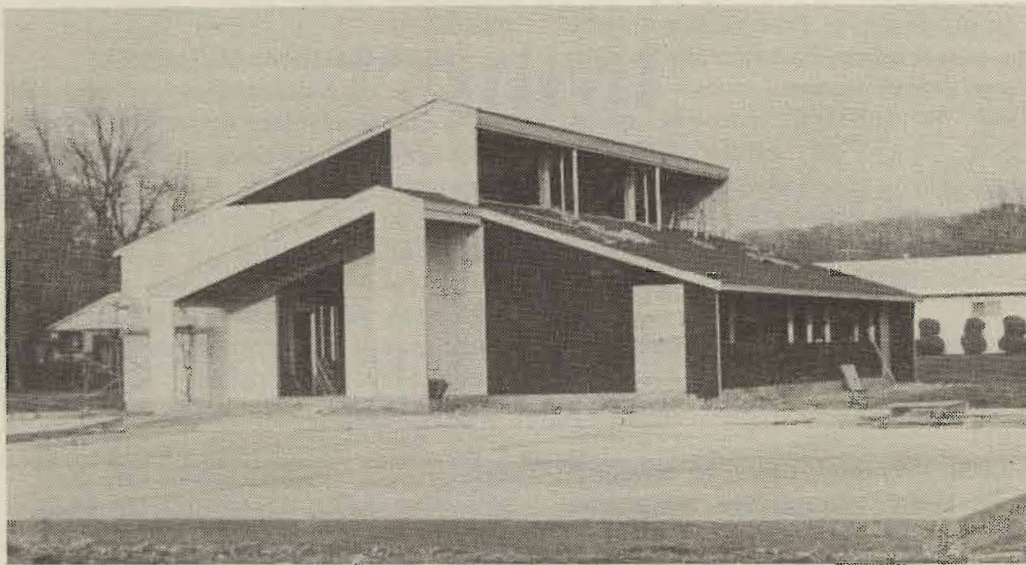
Average winter temperature is 37.4 degrees. Average summer temperature is 82.1. Rainfall averages 42.46 inches per year. Stilwell's elevation above sea level is 1,112 feet.

EDUCATION

One elementary school, one junior high and one high school. Adair County Branch, Indian Capital Area Vocational-Technical School, is located at north edge of Stilwell. Flaming Rainbow University offers classes here. John Brown University, Siloam Springs, Ark., is 30 miles away; University of Arkansas, Fayetteville, 50 miles; and Northeastern State University, Tahlequah, 25 miles.

INDUSTRIAL SITES AVAILABLE

Acreage is available for industries through the Stilwell Industrial Foundation. Many choice locations for industries are



Stilwell's new library is nearing completion on property donated by Dr and Mrs C.W. Mehegan.

This page made possible through the
contributions of the following:

FACET ENTERPRISES

U.S. Highway 59 South,
Stilwell, Oklahoma

available in the area.

The Cherokee Nation is developing an industrial park just south of Stilwell on US 59 with the aid of a government grant. One large building, occupied by Facet Industries, a filter manufacturer, has been erected at the industrial park.

PREVAILING WAGE SCALE

U.S. minimum wage and hour law prevails.

MAJOR INDUSTRIES

Stilwell Foods, Inc., Cherokee Nation Industries, Inc., Facet Industries, Hudson Foods, Inc., Adair County Orchard Co., and Ideal Fruit Farm.

MOTELS AND RESTAURANTS

Two motels with 56 units. Numerous good eating places.

WATER AND SEWER SYSTEM

Stilwell has an abundance of clean, pure water—4,000,000 gallons per day—from 140-acre city lake. The lake is large enough to serve Stilwell for three years without a drop of rain falling. Present sewer system is large enough to accommodate a city of 10,000. A \$500,000 industrial sewer system, which can handle 2,000,000 gallons of industrial wastes daily, was completed recently. Enlargement of the city's water and sewer systems is under way for additional industries.

ELECTRICAL POWER

The City owns its own electrical distribution system, and gets its own power from the Grand River Dam Authority. Special industrial rates are offered. Present capacity of 5,000 KW could easily be enlarged. Ozarks Electric Cooperative serves the rural areas.



One of the oldest churches in the county, the Zion United Methodist, will celebrate its 60th anniversary Sunday, May 15 with church services at 9:30 a.m., a covered dish lunch at the Zion School at 12:30 p.m.; and a program at the church at 2 p.m. Friends are welcome.

BANKING

The Bank of Commerce, as of Dec. 31, 1982, had total capital and reserves of \$3,140,810.47 with \$26,928,969.64 in deposits and total assets of \$30,869,221.23.

INDIAN INDUSTRIAL DEVELOPMENT ASSISTANCE

The Bureau of Indian Affairs in cooperation with Oklahoma employment services agencies, will assist industry in recruitment of qualified applicants to meet personnel staffing requirements.

With the Arkansas River only about 30 miles away, Adair County can expect continued growth now that the Arkansas and Verdigris Rivers are opened to navigation.

INDUSTRIES INTERESTED IN THIS AREA ARE INVITED TO WRITE DAN GOEHRING, PRESIDENT OF THE STILWELL AREA CHAMBER OF COMMERCE.

This page made possible through the contributions of the following:

KNIGHT'S STALLION STATION

Hwy. 51 W. — 696-3686 or 696-7847

CIRCLE S FOOD STORE

& Laundry — 2nd & Maple, 696-4115

STEWART'S GARAGE

696-4314 — Stilwell

EAST PARK DINER

J.T. and Jean Lowe — Bill and Cathy Swift

R & S PAWN SHOP

Singer & Kirby Sales & Service

STILWELL SATELLITE SHELTERED WORKSHOP

104 S. First St. — 696-6900

THE HEAD QUARTERS — Ph. 696-HAIR

315 N. 2nd — Stilwell

MAYTAG LAUNDRY — SELF-SERVICE

Open 24 Hours — Garry & Sharon Robbins

S. & V. FABRICS

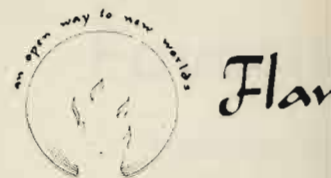
Open Thursday and Friday

VONNIE'S PAWN SHOP

Vonnie, Shirley and Paul — 101 W. Walnut

HUNTERS 5 & 10

Stilwell, Okla.



BOARD OF TRUSTEES

George Poolaw
(Kiowa)
Chairman

Leo Fishinghawk
(Cherokee)
Vice Chairman

Louis Griffin
(Cherokee)
Sec./Treasurer

Larry Ferguson
ex-officio

Dan Goehring
ex-officio

Richard Nichols
(Pueblo)

Carol Butler
(Kiowa/Caddo)

George Cochran
(Cherokee)

Dr John Edwards
(Absentee-Shawnee)

James Morrison
(Cherokee)

Max Squyres
(Cherokee)

Sam Ed Bush
(Cherokee)

NATIONAL ADVISORY COUNCIL

Dr Mike Alexandroff, Pres.
Columbia College (Chicago)

Dr Robert Cramer, Pres.
Carroll College (Wisconsin)

Dr Robert Gale, Exec. Dir.
Association of
Governing Boards

Dr Morris Keeton, Exec. Dir.
Council for the
Advancement of
Experiential Learning

Dr Gary Quehl, Exec. Dir.
Council of Independent
Colleges (CASC)

NATIONAL ADVISORY BOARD

Iron Eyes Cody
(actor)

Doug Henning
(magician)

Wayne Newton
(entertainer)

Robert Northshield
(Exec. Producer)
CBS Sunday Morning



Flaming Rainbow University

BOARD OF TRUSTEES

George Poolaw
(Kiowa)
Chairman

Leo Fishinghawk
(Cherokee)
Vice Chairman

Louis Griffin
(Cherokee)
Sec./Treasurer

Larry Ferguson
ex-officio

Dan Goehring
ex-officio

Richard Nichols
(Pueblo)

Carol Butler
(Kiowa/Caddo)

George Cochran
(Cherokee)

Dr John Edwards
(Absentee-Shawnee)

James Morrison
(Cherokee)

Max Squyres
(Cherokee)

Sam Ed Bush
(Cherokee)

NATIONAL ADVISORY COUNCIL

Dr Mike Alexandroff, Pres.
Columbia College (Chicago)

Dr Robert Cramer, Pres.
Carroll College (Wisconsin)

Dr Robert Gale, Exec. Dir.
Association of
Governing Boards

Dr Morris Keeton, Exec. Dir.
Council for the
Advancement of
Experiential Learning

Dr Gary Quehl, Exec. Dir.
Council of Independent
Colleges (CASC)

NATIONAL ADVISORY BOARD

Iron Eyes Cody
(actor)

Doug Henning
(magician)

Wayne Newton
(entertainer)

Robert Northshield
(Exec. Producer)
CBS Sunday Morning

Welcome

to the

36th

Strawberry Festival

Visit our new campus in Stilwell

FRU's MABEE EDUCATIONAL BUILDING

FRU'S MABEE EDUCATIONAL BUILDING

MABEE CAMPUS
419 North Second Street
Stilwell, Oklahoma 74960
918-774-3644



Renovation Scheduled For Completion By 1983

CAMPUS LOCATIONS:

Rt. 5, Box 240 (Hwy. 62)
Tahlequah, Ok. 74464
918-456-5662

419 North Second Street
Stilwell, Ok. 74960
918-774-3644

Oaks Indian Center
Oaks, Ok.
918-868-2979

*A tradition of education:
from elementary to
high school to
college...*

Since 1902 this site has been in continuous use as a school. The main part of the current structure was built to house the Stilwell High School in 1908, with additions in 1914, 1921, 1940 (a WPA project) and 1947. For a time during the 40's, the building also housed the elementary school.

The new Stilwell High School opened in 1980 and FRU began the negotiations and fund-raising necessary to purchase the old building.

In January 1981, the J.E. and L.E. Mabee Foundation awarded FRU \$300,000 to purchase and begin renovation. By February, FRU was at home in the new Mabee Educational Building and the tradition of education on this historic site continues.

When renovations are done, the Mabee Campus will include classrooms, labs, offices, a student center, a conference center, an athletic center, vo-ag facilities and a museum for the Adair County Archives.

*FRU is an equal opportunity/affirmative
action institution.*

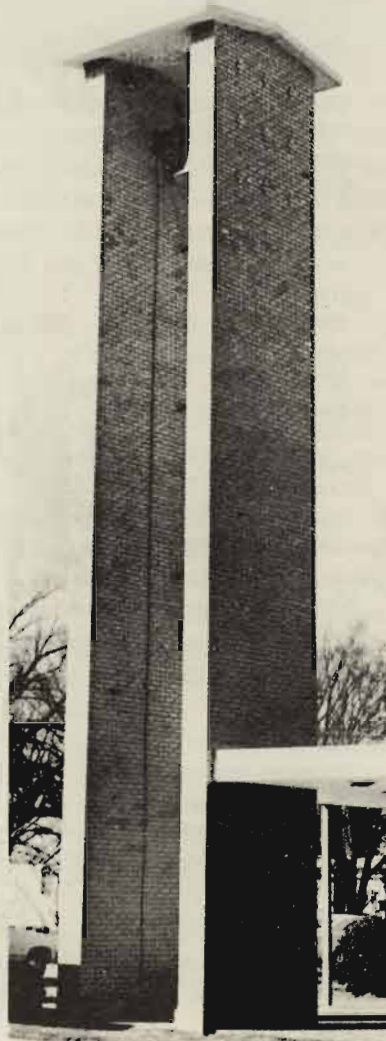
Stilwell Churches

Most religious faiths are represented in the Stilwell area.

Other denominations have churches in communities surrounding Stilwell.

The churches include:

ASSEMBLY OF GOD
BELL BAPTIST CHURCH
BUNCH BAPTIST CHURCH
CALVARY CHURCH OF EAST PEAVINE
CENTRAL BAPTIST CHURCH
CHERRY TREE BAPTIST
CHEROKEE CHILDRENS MISSION
CHEROKEE HILLS UNITED PRESBYTERIAN
CHUCULATE CHURCH
CHURCH OF CHRIST
CHURCH OF GOD OF THE APOSTOLIC FAITH
EWING CHAPEL HOLINESS
FAITH TABERNACLE
FIRST BAPTIST CHURCH
FIRST CHRISTIAN CHURCH
FIRST UNITED METHODIST CHURCH
FREE HOLINESS CHURCH
GRACE CHAPEL
GUIDING LIGHT CHURCH
HONEY HILL CHURCH
Lighthouse Church of God
MULBERRY BAPTIST
PENTECOSTAL HOLINESS CHURCH
ROCK SPRINGS BAPTIST
SEVENTH DAY ADVENTIST CHURCH
UNITED METHODIST INDIAN CHURCH
ZION UNITED METHODIST CHURCH



This page made possible through the contributions of the following:

H.D. and Bonnie Gound
Glen and Roxie Robbins
Hershal and Penny Dotson
Larry and Gloria Eubanks
Ellis and Betty Deweese
Charles and Cindy Crozier
John and Linda Hummingbird
Rev Bob, Beda and Kristi Rowley
Claude and Patty Todd
M.O. and Marilyn Buckner
James and Paulette Roberts

Otto and Frances Alderson
L.T. and Evana Spray
Roy and Lucille Hitson
Dean and Roberta Jackson
Jim and Pam Carson
Bob and Linda Ray
C.D. and Alyene Mangus
Hugh and Nina Zimmerman
Joseph and Dorothy Smith
J.D. and Lois Hudgins
Tobe and Peggy O'Neal
Bob and Janie Johnson

Jack and Murel Kay
Kenneth and Johnnie Rains
Tommy Dale and Dorothy Worsham
Jim and Betty McGee
Rebecca and James Ferguson
Dr and Mrs Bill J. Goodwin Jr.
Dr Gary and Linda Jones
Dan and Lynn Smith
Jim and Joy Lindsey
The Dave Benham Family
Jim and Clealus Hardin

Favorit

STRAWBERRY ICE (Mrs Bob Bai

6 eggs
2 cans Milnot
¼ tsp. salt
2½ cups sugar
3 cups strawberries (cr
1 T. Vanilla

Beat eggs until light c
gradually. Add salt, vanil
strawberries, in blender. J
beat at low speed until m
add strawberries.

Makes 1 gallon.

STRAWBERRY PRE (Miss Lucille S

Prepare, wash and drain

Fill quart strawberry b
and empty into 5½ quart p
sure-jell and stir until dis
cups sugar and mix well. L
ing boil. Time and let boil
Skim off foam. Empty into
let stand a day or so bef
jars. Store in freezer or r
keep indefinitely.

PUFFY STRAWBERRY

¼ cup dairy sour cream
1¼ cups fresh sliced str
½ teaspoon grated oran
1 Puffy omelet**

Measure out sour crea
and orange peel before pr
set aside. Prepare Puffy or

Across

THO

GREEN CO

Favorite recipes

STRAWBERRY ICE CREAM

(Mrs Bob Bailey)

- 6 eggs
- 2 cans Milnot
- ¼ tsp. salt
- 2½ cups sugar
- 3 cups strawberries (crushed)
- 1 T. Vanilla

Beat eggs until light color. Add sugar gradually. Add salt, vanilla, and crushed strawberries, in blender. Add Milnot and beat at low speed until mixed good, then add strawberries.

Makes 1 gallon.

STRAWBERRY PRESERVES

(Miss Lucille Starr)

Prepare, wash and drain strawberries.

Fill quart strawberry box with berries and empty into 5½ quart pan. Add ½ box sure-jell and stir until dissolved. Add 3 cups sugar and mix well. Let come to rolling boil. Time and let boil 6 or 7 minutes. Skim off foam. Empty into Pyrex dish and let stand a day or so before putting into jars. Store in freezer or refrigerator. Will keep indefinitely.

PUFFY STRAWBERRY OMELET

- ¼ cup dairy sour cream
- 1¼ cups fresh sliced strawberries
- ½ teaspoon grated orange peel
- 1 Puffy omelet**

Measure out sour cream, strawberries and orange peel before preparing omelet; set aside. Prepare Puffy omelet**.

To serve: Loosen omelet edges with spatula. Down center of omelet, with a sharp knife, cut upper surface but do not cut through to bottom of omelet. Spread 2 tablespoons sour cream on half of omelet; sprinkle with ½ cup strawberries. Tip skillet; with pancake turner fold in half and turn out onto warm platter with a quick flip of the wrist. Spread remaining sour cream over omelet, top with remaining strawberries and orange peel. Serve immediately. Makes 2 servings.

* * PUFFY OMELET

- 4 eggs, separated
- ¼ cup water
- ¼ teaspoon salt
- ¼ teaspoon cream of tartar or grated lemon peel
- 1 tablespoon butter

Beat egg yolks until thick and lemon-colored, about 5 minutes. Add water, salt and cream of tartar to whites; beat until stiff but not dry, or just until whites no longer slip when bowl is tilted. Fold yolks into whites. On medium-high heat, heat butter in 10-inch omelet pan or skillet with ovenproof handle* * * until just hot enough to sizzle a drop of water. Pour in omelet mixture; level surface gently. Reduce heat to medium. Cook slowly until puffy and lightly browned on bottom, about 5 minutes. Lift omelet at edge to judge color. Bake in preheated 350 degrees F. oven 10-12 minutes or until knife inserted halfway between center and outside edge comes out clean.

This page made possible through the
contributions of the following:

EAST SIDE ABSTRACT

Across from Adair County Court House

NEWLY WEDS FOODS

Chicago, Illinois

THOMPSON REAL ESTATE — 696-7700

1000 South Second St., Stilwell

GREEN COUNTRY MOBILE HOME SALES — 696-3200



**COME
ON
ALONG!**



KTUL-TV TULSA