



35th Annual



Strawberry Festival

May 8, 1982

Stilwell, Oklahoma



Queen
Monica Martinez

Club sponsors Festival

The Stilwell Kiwanis Club, which has sponsored the Strawberry Festival ever since its inception, has had an unbroken tradition of community service since it was chartered 36 years ago.

The Club, which meets for lunch each Tuesday, is among the 7,273 clubs in Kiwanis Clubs International. The organization has a membership of 291,221 and includes clubs in 61 nations and geographical areas.

Under the motto of "We Serve," the Stilwell Kiwanis Club sponsors such diversified activities as the Boy Scouts and the annual Strawberry Festival.

The club donates several thousands of dollars each year to various community programs, as well as hundreds of man hours.

Club members participate in fund raising activities such as "Pancake Day" which is traditionally held the morning of the first day of deer season.

The Club also sponsors a concession stand during the summer, at the city's ball park.

After 36 years the Stilwell Kiwanis Club continues to live up to its motto, "We Serve."



Charles Crozier, third from left, is this year's president of the Stilwell Kiwanis Club. Others, from left: Dean Jackson, secretary-treasurer; Neb Miller, vice president; Crozier; Jim Young, lieutenant-governor of this division; Mark Hodson, recipient of the Layman of the Year award; and Tom Todd, immediate past president.

About the cover

Official photograph of Miss Monica Martinez who will be crowned queen of the 35th annual Strawberry Festival on May 8.

The cover was made possible through the contribution of Stilwell Foods, Inc.

This page made possible through the contributions of the following:

Zero Mountain, Inc.
Fayetteville, Arkansas
Ellex Transportation, Inc.
Tulsa, Oklahoma

Welcome

Welcome to this year's version should be a lot of enjoyment, the ball game, the Parker and the Co. ment, but we will

Other events of the luncheon, the Strawberry and ice cream, and

Come and celebrate the Heart of Green Co.

Neb Miller
Vice-President

Tom Todd
Past President

Ron Broad
James F. Carson
Joe H. Carson
Joe Lynn Carson
Charles Crozier
Hershal Dotson
Berry Ferguson
Clint Fixin
John Freeman
Murle Gilbreath

Across from
CHERRY
Highway
The
Green Co.

Welcome, Visitors!

Welcome to the 35th Annual Strawberry Festival! This year's version should be bigger and better than ever. For your enjoyment, the bandstand program has been expanded. Billy Parker and the Country Cousins are the featured entertainment, but we will also have gospel music and local talent.

Other events of the day will include the parade, the Festival luncheon, the Strawberry auction, free serving of strawberries and ice cream, and finally the Stilwell Roundup Club Rodeo.

Come and celebrate Oklahoma's Diamond Jubilee in the Heart of Green Country, the Strawberry Capital of the World!

Charles Crozier
President
Stilwell Kiwanis Club

Kiwanis Club Officers

Neb Miller Vice-President	Charles Crozier President	Dean Jackson Secretary-Treasurer
Tom Todd Past President	James Young Lieutenant-Governor	Joe H. Carson Past Lieutenant-Governor

Kiwanis Club Members

Ron Broad	H.D. Gound	Sam Love	Jack Smay
James F. Carson	J.L. Hallford	Jerry Means	Daniel D. Smith
Joe H. Carson	W.O. Hatley	Neb Miller	L.T. Spray
Joe Lynn Carson	Raymond B. Hitson	Hiram McFarland	Claude Todd
Charles Crozier	Mark Hodson	Tobe O'Neal	Tom Todd
Hershal Dotson	Dean Jackson	Barnes Pemberton	Cary Wyatt
Berry Ferguson	Phil Kaniatobe	Bob Ray	James Young
Clint Fixin	Jack Kay	Dale Rowan	Hugh Zimmerman
John Freeman	Larry Lane	Robert Rowley	Wade Zumwalt
Murle Gilbreath	Mike Lee	Greg Seamans	

This page made possible through the
contributions of the following:

East Side Abstract

Across from Adair County Court House

CHEROKEE NATION INDUSTRIES, INC.

Highway 51 West, Stilwell, Oklahoma

Thompson Real Estate — 696-7700

1000 South Second St., Stilwell

Green Country Mobile Home Sales — 696-3200



1982 Queen Monica Martinez and her attendants, Miss Lynda Ann Hudgins, right, and Miss Karen Potter.

Queen and her attendants

Miss Monica Martinez, a senior at Stilwell High School, was chosen 1982 queen of the Strawberry Festival by a panel of out-of-county judges March 19.

Miss Martinez, 17, is the daughter of Mr and Mrs Larry Martinez, Route 3 Stilwell.

First Runnerup is Miss Lynda Ann Hudgins, a freshman at Northeastern State University, Tahlequah, daughter of Mr and Mrs J.D. Hudgins, Route 3 Stilwell.

Second runnerup is Miss Karen Potter, 16, a Stilwell High School sophomore,

This page made possible through the contributions of the following:

Means Furniture Inc.,
Jerry & Ann Means

Farmers Cooperative
Feed and Fertilizer

Shopping Center Pharmacy
Radio Shack Dealer — Snack Bar

daughter of Mr and Mrs Ba
Route 4 Stilwell.

First alternate is Miss Pam
daughter of Mr and Mrs J. M
Route 2 Westville, a junior a
High School.

Other contestants were:

Misses Wendy Dunaway, 1
of Mr and Mrs Joe White, Wes
Latta, 18, daughter of Warren
Latta, Stilwell; Kayla Latta, 16,
Warren and Wilma Latta; Lurd
daughter of Mr and Mrs Ort
Jonetta Elizabeth Stand, 17,
Mr and Mrs John Stand, Rout
and Tammy Vardeman, 16, dau
and Mrs Tommy L. Vardema
Stilwell.

A large crowd attended the
at the Maryetta School.

Charles Crozier, president of
Kiwanis Club which spo
Strawberry Festival, was
ceremonies.

The judges were: Vick Mon
Channel 8 in Tulsa; Brenda Kr
Miss Cherokee, Tahlequah;
schel, disc jockey of Siloam S
radio station; and Dr Roger V
dent of Northeastern State
Tahlequah.

Judging was based on
poise, communicative skills,
beauty in street wear, essay
petition, and formal wear.

Miss Martinez, who will re
variety of gifts from local busi
was awarded a \$400 regents
to Northeastern State by Dr V
She and her two attend

IGA WAREHOUSE MAR
Dale & Mary Row

STILWELL AUTO SUP
Lula Mae Hurlbu

JIM DANDY DRIVE-
Betty Carter & Alta C

daughter of Mr and Mrs Bayne Potter, Route 4 Stilwell.

First alternate is Miss Pam Hoehn, 16, daughter of Mr and Mrs J. Neil Hoehn, Route 2 Westville, a junior at Westville High School.

Other contestants were:

Misses Wendy Dunaway, 17, daughter of Mr and Mrs Joe White, Westville; Dena Latta, 18, daughter of Warren and Wilma Latta, Stilwell; Kayla Latta, 16, daughter of Warren and Wilma Latta; Lurde Ortey, 17, daughter of Mr and Mrs Ortey, Stilwell; Jonetta Elizabeth Stand, 17, daughter of Mr and Mrs John Stand, Route 3 Stilwell; and Tammy Vardeman, 16, daughter of Mr and Mrs Tommy L. Vardeman, Route 2 Stilwell.

A large crowd attended the contest held at the Maryetta School.

Charles Crozier, president of the Stilwell Kiwanis Club which sponsors the Strawberry Festival, was master of ceremonies.

The judges were: Vick Montalban, from Channel 8 in Tulsa; Brenda Krouse, former Miss Cherokee, Tahlequah; Dan Hentschel, disc jockey of Siloam Springs, Ark., radio station; and Dr Roger Webb, president of Northeastern State University, Tahlequah.

Judging was based on personality, poise, communicative skills, talent and beauty in street wear, essay-talent competition, and formal wear.

Miss Martinez, who will receive a wide variety of gifts from local business people, was awarded a \$400 regents' scholarship to Northeastern State by Dr Webb.

She and her two attendants will be

featured in the Strawberry Festival Parade after which she will be crowned.

STARTED IN 1948

The Strawberry Festival dates back to 1948 when the Stilwell Kiwanis Club decided to do something about stimulating interest in one of Adair County's economic resources.

MANY CHEROKEES

About 91 per cent of the persons living in the southern part of Adair County are of Cherokee descent. Also, the county has the greatest concentration of Cherokee Indians in the United States.

SINCE 1839

The First United Methodist Church of Stilwell had its inception in 1839 at a meeting of Methodists who had come over the "Trail of Tears."

STRAWBERRY PIE

1 quart frozen strawberries thawed and drained

Reserve berries to add later.

In sauce pan add:

2 cups drained strawberry juice

1 cup sugar

5 tablespoons cornstarch (rounded)

Cook 3 minutes. Add red food coloring. Cool. Add strawberries and 3 sliced bananas. Pour into baked pie shells. Top with whipped cream. Makes two 8-inch pies.

This page made possible through the contributions of the following:

IGA WAREHOUSE MARKET

Dale & Mary Rowan

STILWELL AUTO SUPPLY

Lula Mae Hurlbut

JIM DANDY DRIVE-IN

Betty Carter & Alta Clinton

A.M.O. ELECTRIC SUPPLY CO.

Rogers, Arkansas 72756

J.R. PENICK, JR.

Grower, Packer & Shipper of Sweet Potatoes

CAL-GAS, 696-2220

P.O. Box 72, Stilwell, Okla.

Program

May 8, 1982

Ed Brocksmith, Master of Ceremonies

Entertainment	9:00 a.m.
Stilwell High School "Reflections"	
National Anthem	10:00 a.m.
Invocation	10:05 a.m.
Flag Salute	10:10 a.m.
35th Annual Strawberry Parade	10:15 a.m.
Jim Carson, Parade Marshal	
Crowning of Strawberry Festival Queen for 1982	11:30 a.m.
Monica Martinez, Queen	
Introduction of Special Guests	11:45 a.m.
Charles W. Crozier, Stilwell Kiwanis Club President	
Headliner Entertainment	12:00 noon
Billy Parker and the Country Cousins	
Kiwanis Luncheon	12:00 noon
Stilwell Community Facilities Building	
Awards to Champion Strawberry Growers	2:00 p.m.
Strawberry Auction	2:15 p.m.
Entertainment	2:45 p.m.
"Movin'" Country Band	
Free Strawberries and Ice Cream	3:15 p.m.
Gospel Music	4:00 p.m.
Rodeo—Thursday, Friday and Saturday, May 6, 7, 8	8:00 p.m.
Sponsored by Stilwell Round-up Club	

**This page made possible through the
contributions of the following:**

STARR'S DRIVE-IN Dick and Addie Starr	MARKET BASKET Highway 59 North, Stilwell	HOLIDAY MOTEL Hwy. 59 South, Stilwell — 696-7777
BLACKARD REAL ESTATE Ph. 696-2990 — Stilwell	CAVINESS STATION "Your Business Appreciated"	STILWELL FFA CHAPTER Welcomes You to the Festival
STILWELL FLOWER SHOP Flowers for all Occasions—696-2250	WILSON'S BODY SHOP Stilwell, Oklahoma	WINGFIELD'S GIFT SHOP Hwy. 59 South, Stilwell, Oklahoma
THE GUN SHOP — STEPHEN GUFFEY Mon.-Fri. Hwy. 59 N, Stilwell — 696-2765		



Top float in the civic division
the float were Joseph Swimmer

Parade

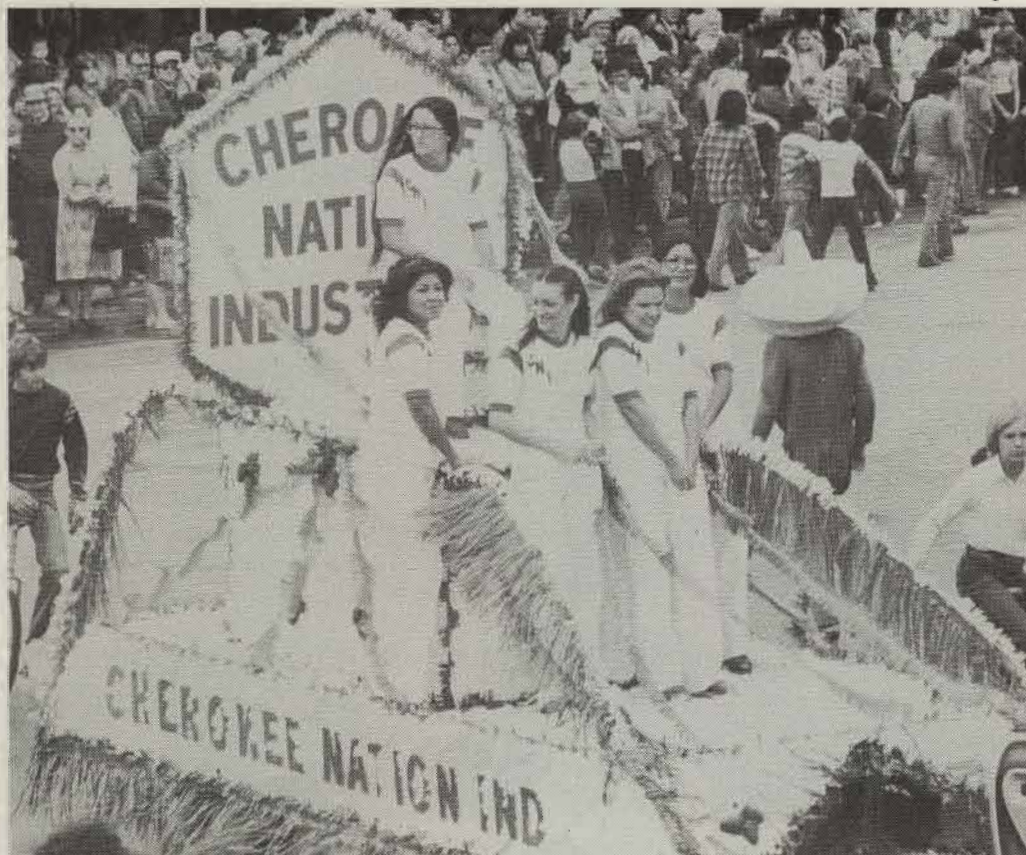
Despite chilly and w
thousands of persons from
area converged on Stilwell fo
nual Strawberry Festival in 1

The rain, which fell earlie
held off during the 90-minut
came back that afternoon

NORTHSIDE BODY
Unger Brothe

JIM HOPKINS FORD
Stilwell, Oklah

WALDRON TRUCK LI
Daily Service to S



Top float in the civic division of the 1981 parade was entered by the Cherokee Nation. Riding on the float were Joseph Swimmer, Nancy Guffey, Angela Martin, Verleta Watie, and DaLana Caviness.

Parade attracts thousands

Despite chilly and wet weather, thousands of persons from this four-state area converged on Stilwell for the 34th annual Strawberry Festival in 1981.

The rain, which fell earlier in the day, held off during the 90-minute parade, but came back that afternoon before the

strawberry auction. By the time people started lining up for their free strawberries and ice cream, the rain was coming down in earnest.

Besides the parade and the strawberry auction, the day's events included the crowning of Festival Queen Stephanie

This page made possible through the contributions of the following:

NORTHSIDE BODY SHOP
Unger Brothers

JIM HOPKINS FORD, INC.
Stilwell, Oklahoma

WALDRON TRUCK LINES, INC.
Daily Service to Stilwell

DOY'S STATION
Stilwell, Oklahoma

J.M. SWANK CO., INC.
Iowa City, Iowa

UNITED STATES COLD STORAGE
Fort Worth, Texas



Miss Stephanie Goodall, queen of the 1981 Strawberry Festival.

Goodall, music, carnival, arts and crafts shows, and Indian Pow-Wow. The third and final performance of the Strawberry Festival Rodeo, scheduled for Saturday night, had to be postponed until Sunday afternoon because of the rain.

Judges named these parade winners:

FLOATS

Civic—1st, Cherokee Nation, 2nd, Stilwell Future Farmers of America

Chapter; and 3rd, Rock Springs Baptist Church.

Commercial—1st, Stilwell Foods, Inc.; 2nd, Peggy's Flowers; and 3rd, Cherokee Nation Industries.

BANDS

Class AA—1st, Fort Gibson; 2nd, Chouteau.

Class A—1st, Arkoma; 2nd, Westville.

Junior High—1st, Fort Gibson; 2nd,

Checotah.

The parade included numerous queens, young twi 200 horses, 10 ponies and six

Senior high bands in the were: Colcord, Arkoma, We sville, Ark., Fort Gibson, Porte and Stilwell.

The junior high bands were Gibson, Catoosa, Checotah, V Grove.

Bob Ray served as parade Ed Brocksmith of Tahlequah parade for the benefit of th who were gathered along the vicinity of the bandstand.

The sun came out briefly parade, and Brocksmith shou public address system, "Let the sun!"

The parade was taped in it Channel 23 of Tulsa which event the following night.

Stilwell queens in the parac to Festival Queen Stephanie cluded: Sharon Doublehead Pam Phelps, speech; Connie ball; Gwenda Williams, Miss School; Gena Gray, wrestling mons, band; Lora Worley, jur ball; Judy West, chorus; and Key Club.

Mrs Oklahoma was Chanr in the parade. She rode in a re threw candy to the crowd.

Old cars and classics from cluded a 1936 Ford pickup a Mustang.

Television personalities in cluded these from Channe Diana Moon, Don Woods,

This page made possible through the contributions of the following:

FLETCHER'S HARDWARE
Phone 696-7500

CHRISTIAN FAMILY BOOK STORE
119 W. Plum Street

STATE FARM INSURANCE CO.
Mark Hodson, Agent

COLLINS FIRESTONE
Tires — Batteries — Appliances

ROBERTS FUNERAL HOME
Serving Adair County Since 1913

REED'S HARDWARE & FURNITURE
Sarah - Quentin - Gene

3115

Ad
Ph. 69

Checotah.

The parade included 14 bands, numerous queens, young twirlers, clowns, 200 horses, 10 ponies and six mules.

Senior high bands in the procession were: Colcord, Arkoma, Westville, Huntsville, Ark., Fort Gibson, Porter, Chouteau, and Stilwell.

The junior high bands were Watts, Fort Gibson, Catoosa, Checotah, Westville, and Grove.

Bob Ray served as parade marshal, and Ed Brocksmith of Tahlequah narrated the parade for the benefit of the thousands who were gathered along the streets in the vicinity of the bandstand.

The sun came out briefly during the parade, and Brocksmith shouted over the public address system, "Let's hear it for the sun!"

The parade was taped in its entirety by Channel 23 of Tulsa which televised the event the following night.

Stilwell queens in the parade, in addition to Festival Queen Stephanie Goodall, included: Sharon Doublehead, basketball; Pam Phelps, speech; Connie Grigsby, football; Gwenda Williams, Miss Stilwell High School; Gena Gray, wrestling; Brenda Simmons, band; Lora Worley, junior high football; Judy West, chorus; and De Mohon, Key Club.

Mrs Oklahoma was Channel 23's entry in the parade. She rode in a red Porsch and threw candy to the crowd.

Old cars and classics from Coweta included a 1936 Ford pickup and a 1964½ Mustang.

Television personalities in the parade included these from Channel 8 in Tulsa: Diana Moon, Don Woods, Becky Dixon,



Second place in the civic division was entered by Stilwell High School's Future Farmers of America Chapter. On the float were Miss Lisa Bruner, FFA sweetheart, and her attendants, Misses Katherine Burnett and Daunita Buckmaster.

Chris Lincoln, and Patricia Grimms.

Clowns of all kinds, including Mickey Mouse and a fox, appeared along the line of march.

The Stilwell Roundup Club led the horse riders who included the queen and sweetheart contestants, and riders from the Cherokee County Sheriff's Mounted

This page made possible through the contributions of the following:

Tom J. Carson
Insurance Agency

Afco Metals, Inc.
3115 S. Zero St., Ft. Smith, Ark.

Adair County Savings and Loan
Ph. 696-5711 — Stilwell, Oklahoma



Stilwell Foods, Inc., had the No. 1 float in the commercial division last year. On the float were Deanna Gregory, Kimberly Sue Grooms, Ladonna Ackley, Philip Todd, and Tannon and Thad Turman.

Patrol and the Tahlequah Roundup Club.

The Bedouin Temple of Muskogee was well represented by motorcycles, clowns, and miniature cars.

Clowns also were in the parade from the Fort Smith, Ark., Grotto.

The Indian Territory jail house was accompanied by several gun-toting marshals who stopped now and then for gunfights with the bad guys.

BUYS RIGHT-OF-WAY

Stilwell was a red haw thicket, interspersed with persimmon trees, in 1895 when the Kansas City Southern Railway bought a right-of-way from Mrs Martha Johnson and Mrs Elizabeth Freeman. Very soon, lots were offered for sale and a town plat laid out.

This page made possible through the contributions of the following:

BRUCE-ROGERS CO.
Fort Smith — Rogers, Ark.

FARMERS PRODUCE
Feed, Seed, Fertilizer — Gene & Bonnie Gray

EAGLE THEATRE
Bargain Entertainment

FLETCHER'S HARDWARE
Phone 774-7500

CHRISTIAN FAMILY BOOK STORE
119 W. Plum Street

STATE FARM INSURANCE CO.
Mark Hodson, Agent

FIRST GRAZING AN

Deer, elk, and buffalo were ing animals recorded in Washington Irving in his b the Prairie," written in 1822.

MANY ALREADY H

The United States Cong bill in 1830 for the remov Civilized Tribes from the sou of the U.S. into Indian T known as Oklahoma. All of



Cherokee Nation Industr

Do

FIRST GRAZING ANIMALS

Deer, elk, and buffalo were the first grazing animals recorded in this area by Washington Irving in his book, "Tour of the Prairie," written in 1822.

MANY ALREADY HERE

The United States Congress passed a bill in 1830 for the removal of the Five Civilized Tribes from the southeastern part of the U.S. into Indian Territory, now known as Oklahoma. All of Adair County

became a part of the Cherokee Nation. Many Cherokees were already here when, in about 1838, the Eastern Cherokees were forced to leave their homes in Georgia, Tennessee, and North Carolina and were driven over the infamous "Trail of Tears," ending in the northern part of Adair County at Mission Mountain.

NAMED FOR JURIST

Adair County was named in honor of a prominent Cherokee jurist and educator.



Cherokee Nation Industries' float placed third in the commercial division in 1981.

This page made possible through the
contributions of the following:

Ballentine Produce, Inc.

Alma, Arkansas

Coastal Plains, Inc.

Fort Smith, Arkansas

American Can Co.

Dallas and Houston, Texas

Festival luncheon

The annual Festival luncheon will be held at the Stilwell Community Facilities Building at 12 o'clock noon on Festival Day.

The guest speaker will be Herb Karner, former farm editor of the Tulsa World.

Tickets for the luncheon, sponsored by the Stilwell Kiwanis Club, are being sold for \$5 each.

Shuttle buses will transport the luncheon guests from the downtown area to the community building.

Last year's Festival luncheon was attended by about 275 persons.

Alumni to meet May 8

The second annual all-school reunion will be held Saturday, May 8 at the new Stilwell High School building.

All classes will meet for registration and visiting at 6:30 p.m. when pictures will be made of each class.

The program will begin at 8 p.m. in the new cafeteria located back of the high school.

Several classes are planning extra events, but all will meet in the new high school and will adjourn for the all-school program at 8 p.m.

Refreshments will be available in the lobby for all guests. A special table will be set up for those wishing to join the Stilwell High School Alumni Association.

The reunion is open to anyone who has attended the Stilwell Schools and their guests.

NAMED FOR ARTHUR STILWELL

Stilwell was named for Arthur Edward Stilwell who built the Kansas City Southern Railway, founded several dozen hamlets and villages, and created a city, Port Arthur, Tex., named for himself. Between 1886 and 1912, he made sizeable contributions to the economic growth of the south-central states of Oklahoma, Arkansas, Louisiana, and Texas.

STRAWBERRY PRESERVES

Prepare, wash and drain enough strawberries to fill quart container. Place in 5½ quart saucepan. Add ½ box Sure-Jell and stir until dissolved. Add 3 cups sugar and mix well. Let come to rolling boil. Time and let boil 6 or 7 minutes. Skim off foam. Empty into pyrex dish and let stand a day or so before putting into jars. Store in freezer.

This page made possible through the
contributions of the following:

Container Corp. of America
Corrugated Containers — Muskogee

C.J. Carson
Insurance Agency



Queen receives award from
Art Swanberg of the Te
district.

SCRUGGS
Radio and Telev
PEGGY'S FLOWE
"Flowers for all Occ
STILWELL TRUCK SH
Truck Repairing an
BRUNER'S AUTO — TRACT
Also Used Car
FLINT MASONIC LODGE
Stilwell, Oklaho



1981 Festival Queen, Miss Stephanie Goodall, and her attendants, Miss Ronetta Keeter, left, and Miss Shawna Hill.



Queen receives award from Kiwanis Gov Art Swanberg of the Texas-Oklahoma district.

1981 Queen

Miss Stephanie Goodall, Stilwell, reigned as queen over the 1981 Strawberry Festival celebration.

She is the daughter of Mr and Mrs Steve Goodall, and is a senior at Stilwell High School this year.

The queen's attendants were Ronetta Keeter, daughter of Mr and Mrs Gus Keeter, Stilwell; and Shawna Hill, daughter of Mr and Mrs Mack Hill, Stilwell.

This page made possible through the contributions of the following:

SCRUGGS

Radio and Television

PEGGY'S FLOWERS

"Flowers for all Occasions"

STILWELL TRUCK SERVICE

Truck Repairing and Parts

BRUNER'S AUTO — TRACTOR SUPPLY

Also Used Cars

FLINT MASONIC LODGE NO. 11

Stilwell, Oklahoma

HOPKINS C-MART

Highway 59 S and SH 100 W

FEEDER'S SUPPLY

Marion and Loreen Blackburn

JAY'S LUNCH BOX

Jay and Lucille Wilson

S.&V. FABRICS

Open Thursday and Friday

BIG B FOOD & DELI

Fresh Bakery Goods — 696-5100

BYNUM'S USED CARS

902 S. Second St.

Berry auction sets record

Strawberry auction buyers paid a total of \$8,825 for 13 crates of berries to set a record at the 34th annual Strawberry Festival in 1981.

The championship crate of Cardinal berries, exhibited by Boyd Holiman, Route 2 Stilwell, sold for a record \$3,600 to the Razor Clam Restaurant in Tulsa owned by Jimmy Leake, owner of Channel 8 television station in Tulsa.

In 1980, Leake's restaurant paid a record \$3,100 for the championship 16-quart crate of berries.

This marked the sixth straight year that Leake, or his representative, has bought the championship berries—but the price has gone up every year. The first year, in 1976, Leake paid only \$675 for the top crate of berries exhibited by John Auffet.

Thirteen crates of berries were auctioned off by Jerry Means at the 1981 Festival.



It doesn't take very many large berries to fill a 16-quart crate.



Judging the berries on Festival Day.

Fourteen crates were in the contest, but one of the crates was not sold in the auction because the owner decided to donate his crate to Leake.

Nine of the 14 crates were Cardinal berries, three Atlas, one Sunrise, and one Albritten.

Placings of the other exhibitors are listed with the strawberry variety, the buyer, and the amount paid:

2nd, Homer Hignite, Stilwell, Cardinal, Bigby Foods and Deli of Stilwell, \$1,500.

3rd, Baird's Stoney Point Farm, Stilwell, Atlas, Bank of Commerce, \$1,000.

4th, Andrew Cain and Sons, Route 4 Stilwell, Cardinal, Reasor's Discount Foods, \$750.

5th, Brannon Brothers, Route 4 Stilwell, Albritten, Cherokee Nation Industries, \$575.

6th, Robert Bennett, Vian, Cardinal, Stilwell Foods, Inc., \$350.

This page made possible through the contributions of the following:

WORSHAM TRACTOR
Everything for the farm

BELL & COMPANY — SILOAM SPRINGS
Office Supplies & Printing

PENNWALT CORPORATION
Food Plant Cleaning Chemicals

PVO INTERNATIONAL
Ray Youker — Oklahoma City

ANDERSON WHOLESALE CO.
Non-Food Dist. — Muskogee, Okla.

INLAND CONTAINER CORP.
Fort Smith, Arkansas

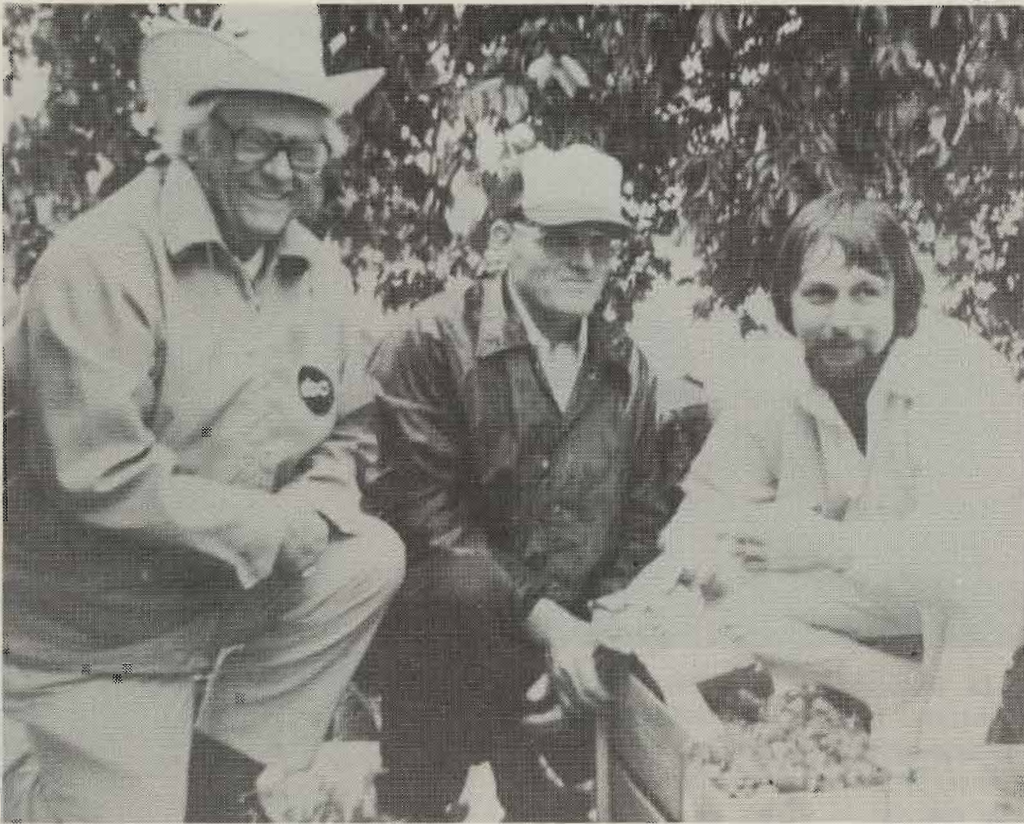
Championship berries were
At center is Boyd Holiman, the
right is Rick Kamp, Razor Clam
Channel 8 television station.

7th, Lawrence Phillips,
Ark., Cardinal, IGA War
Stilwell, \$250.

8th, Rue Vickery, Prairie
Cardinal, Stilwell Foods, \$1

9th, Ollie Vickery, Route
Ark., Cardinal, Channel 8 Te

10th, Combs Strawberry
Fayetteville, Ark., Cardina
Channel 8.



Championship berries were bought by the Razor Clam Restaurant of Tulsa at the 1981 Festival. At center is Boyd Holiman, the grower of the 16-crate berries that sold for \$3,600 at the auction. At right is Rick Kamp, Razor Clam manager, and at left is Jimmie Leake, owner of the restaurant and Channel 8 television station.

7th, Lawrence Phillips, Prairie Grove, Ark., Cardinal, IGA Warehouse Store, Stilwell, \$250.

8th, Rue Vickery, Prairie Grove, Ark., Cardinal, Stilwell Foods, \$175.

9th, Ollie Vickery, Route 1 Prairie Grove, Ark., Cardinal, Channel 8 Television, \$100.

10th, Combs Strawberry Farm, Route 7 Fayetteville, Ark., Cardinal, donated to Channel 8.

11th, G. Buckner, Route 2 Stilwell, Sunrise, Bank of Commerce, \$140.

12th, Dean Grigsby, Route 3 Stilwell, Atlas, Reasor's Discount Foods, \$125.

13th, Lucille Hurd Hitson, Route 3 Stilwell, Atlas, Channel 8, \$150.

14th, Charles Barnes, Route 1 Prairie Grove, Ark., Cardinal, Stilwell Democrat-Journal, \$110.

This page made possible through the contributions of the following:

Stilwell

Democrat-Journal

Leon C. Osborn Co., Inc.

Springdale, Arkansas

Stilwell Lumber Co.

Ph. 774-7058 — Building Supplies



Ed Brocksmith of Northeastern State University, Tahlequah, will announce the Strawberry Festival Parade over the public address system for the second year in a row this year.

STRAWBERRY ICE CREAM

(Mrs Bob Bailey)

- 6 eggs
- 2 cans milnot
- ¼ tsp. salt
- 2½ cups sugar
- 3 cups strawberries (crushed)
- 1 T. vanilla

Beat eggs until light color. Add sugar gradually. Add salt, vanilla, and crushed strawberries in blender. Add milnot and beat at low speed until mixed good, then add strawberries.

Makes 1 gallon.

This page made possible through the contributions of the following:

Black Diamond Angus Farm

Lucille Hurd — 918-696-7595

Oklahoma Allied Telephone Co.

Serving Stilwell and Adair County



Miss Cherokee, Mary Kay Harshaw of Muskogee, sang at the 1981 Strawberry Festival program at the band stand.



Pow-Wow Princess at the 2nd annual Strawberry Festival Pow-Wow last year was Miss Lisa Littlejohn, daughter of J.W. and Rachel Sidebottom.

Festiva

Amie Guffey, 4, daughter of Cindy Guffey, Stilwell, Strawberry Princess; and James (Scooter) Ex, 4, son of Brenda Ex, Stilwell, is the 19 Prince.

They were chosen at March. Thirty children, age 4-10, competed for the titles.

First runnersup were Gregory, 5, daughter of J. and Bucky Sidebottom, 6, and Deborah Sidebottom, S. Second runnersup were S.

STILWELL MERCAN

Burnell Isaacs, Ma

PARROTT'S JEWELRY

Stilwell, Oklaho

ST. REGIS — FLEXIBLE PAC

Bob Simpson — Dalla



Amie Guffey
1982 Princess

Cristopher James Ex
1982 Prince

Festival royalty

Amie Guffey, 4, daughter of Bruce and Cindy Guffey, Stilwell, is the 1982 Strawberry Princess; and Christopher James (Scooter) Ex, 4, son of James and Brenda Ex, Stilwell, is the 1982 Strawberry Prince.

They were chosen at a pageant in March. Thirty children, ages 4, 5 and 6, competed for the titles.

First runnersup were Angela Hope Gregory, 5, daughter of Judith Gregory; and Bucky Sidebottom, 6, son of Robert and Deborah Sidebottom, Stilwell.

Second runnersup were Stephanie Lynn

Simmons, 4, daughter of Lynn and Brenda Simmons; and Stephen Andrew Sanders, 5, son of Mr and Mrs Jerry Sanders, Westville.

The princess and prince received gift certificates and a \$50 bond from area merchants and the Bank of Commerce of Stilwell and the Peoples Bank of Westville.

The annual event is sponsored by Soroptimist International of Adair County, a service organization of professional and business women.

**This page made possible through the
contributions of the following:**

STILWELL MERCANTILE
Burnell Isaacs, Manager

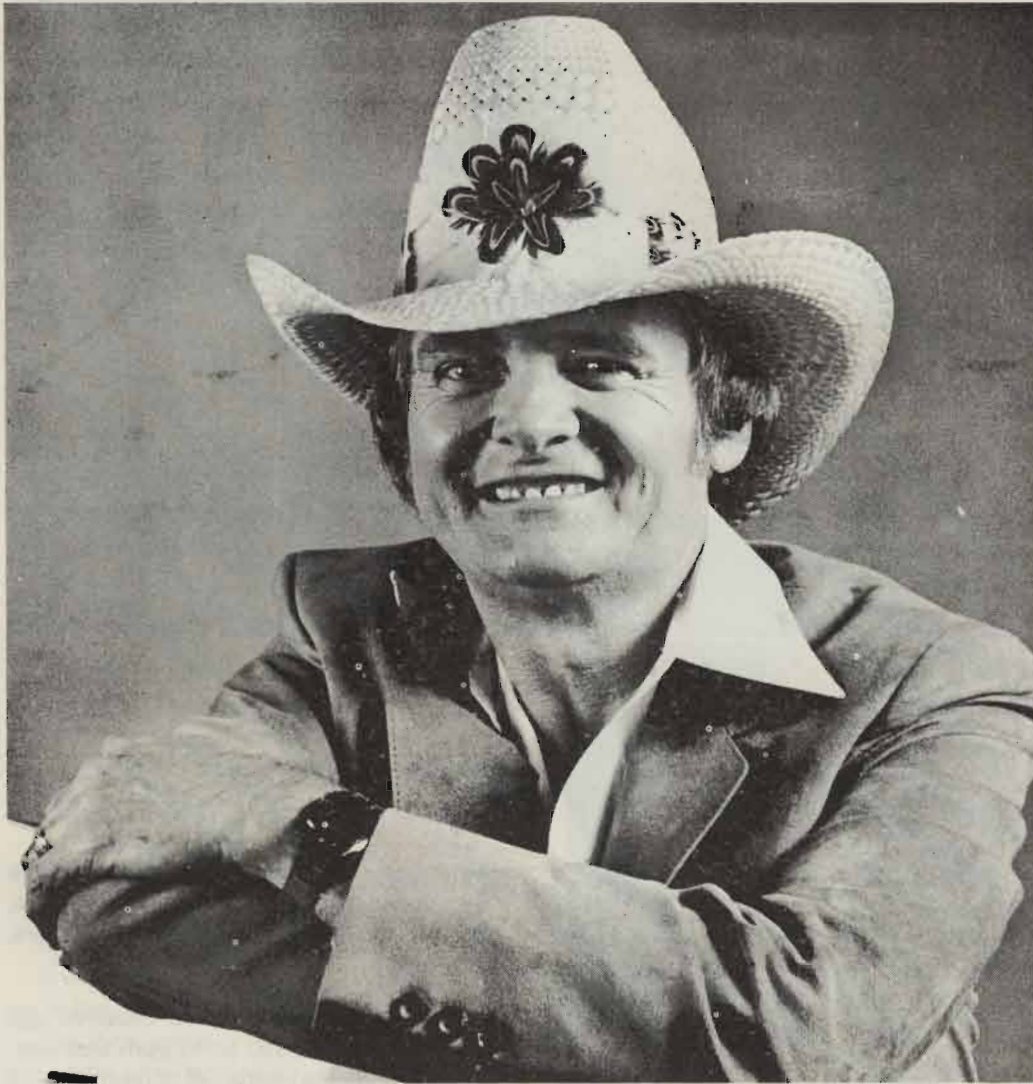
PARROTT'S JEWELRY STORE
Stilwell, Oklahoma

ST. REGIS — FLEXIBLE PACKAGING DIV.
Bob Simpson — Dallas, Texas

CLARKLIFT OF TULSA
918-622-7200 — 8118 E. 44th St.

SCHMIEDING PRODUCE CO., INC.
Springdale, Arkansas

FELTS FAMILY SHOE STORE
Come To See Us



The Country Cousins, featuring Billy Parker, will be the main entertainment at the 35th annual Strawberry Festival. This will mark the third straight year that Billy Parker has appeared on the Strawberry Festival program—but the first year for the Country Cousins. Parker, a country music singer and disc jockey on KVOO radio in Tulsa, has been named one of the top ten new male singers in America. On weekends, he travels all over the country playing dances and concerts, but during the week he is disc jockey for the All-American Country Road Show on KVOO radio in Tulsa.

This page made possible through the
contributions of the following:

WORSHAM'S CARDINAL FOOD STORE
Stilwell, Oklahoma

ISAACS' CONOCO STATION
Norman and David Isaacs

OTASCO — Stilwell
Friendly Folks to Serve You

COCA-COLA BOTTLING CO.
Of Fort Smith, Arkansas

STILWELL CAFE
Dolly Kester

THE PILLSBURY COMPANY
Prairie Village, Kansas

Prospect

Prospects look good for the strawberry crop. Cold weather should only average around 100 degrees total production.

During recent cold snaps, growers covered their strawberry plants with plastic and used fires to drift the plastic into the fields. Others used overhead irrigation to cover blossoms in a thin coating to prevent the temperature from dropping.



This quality

RICELAND FARM
Stuttgart, Arkansas

CAIN'S COFFEE CAFE
Hotel & Restaurant B

LLOYD & PAT
Hi, You-A

Prospects look good

Prospects look good for this year's strawberry crop. Cold weather damage should only average around 5 per cent of total production.

During recent cold snaps, some growers covered their strawberry patches with plastic and used fires to drift warm air over the fields. Others used overhead irrigation to cover blossoms in a thin, insulating ice coating to prevent the blossom temperature from dropping lower than 32

degrees.

Dean Jackson, Adair County extension director, said, "It looks like we will have about twice as many acres in strawberries this year as we had a year ago. A lot of people have gone back to strawberry production for economic reasons."

Strawberries will be available for purchase on Festival Day in the downtown area of Stilwell at \$20 per crate.



This quart box contains some mighty big strawberries.

This page made possible through the contributions of the following:

RICELAND FOODS
Stuttgart, Arkansas

CAIN'S COFFEE COMPANY
Hotel & Restaurant Blended Coffee

LLOYD & PAT COLE
Hi, You-All

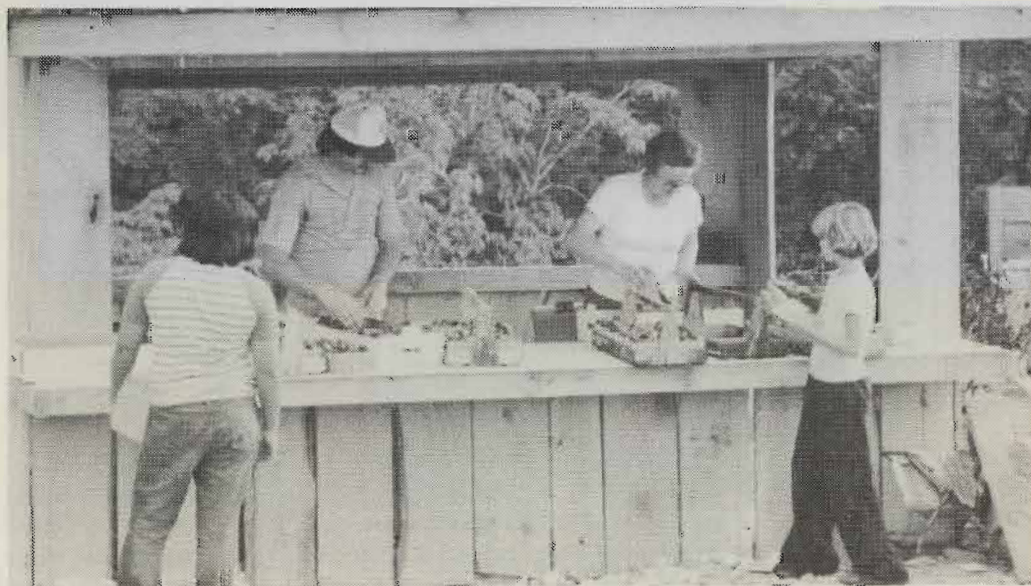
PRESTON REFRIGERATION CO.
Fort Smith, Arkansas

WOODS MEAT PROCESSING
723-5820 — Westville

MR B'S PIZZA
Charles and Debbie Bennett



At a strawberry patch near Stilwell



Pickers collect their money

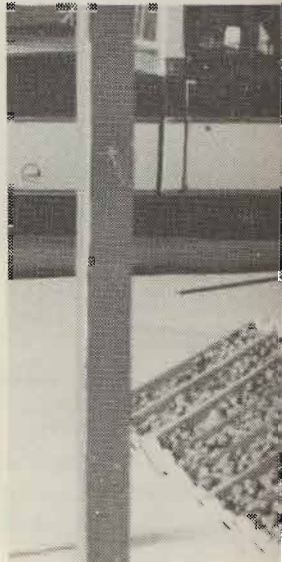
This page made possible through the
contributions of the following:

Albert Equipment - Tulsa
Caterpillar/Towmotor Forklifts

Memorial Hospital

Visiting Hours: 1 p.m. to 4 p.m. and 6 to 8 p.m.
1400 W. Locust — Stilwell, Okla.

TURMAN—PIERCE BUICK—PONTIAC—GMC, INC.
Poteau, Oklahoma



Hee



Youngsters pick strawberries, too



Crates of berries ready for buyers

This page made possible through the
contributions of the following:

Diamond International Corp.
Heekin Can Div., Springdale, Ark.

NSU
Northeastern State University

Facts about Stilwell

POPULATION

(1980 census)—City, 2,369; Adair County, 18,575.

LABOR FORCE

Male, 2,211; female, 825.

TRANSPORTATION

Federal Highways 59 and 62; and State Highways 51 and 100. Interstate 40 is 30 miles south and Interstate 44 is about 90 miles north. The Kansas City Southern Railroad, six truck lines and a bus line serve the area. Stilwell also has a city airport with runways of 1,600 and 2,000 feet. A new airport is in the planning stage.

GOVERNMENT

Mayor-City Council. Active volunteer fire department with 20 members. Eight city police officers and eight county officers. Three Oklahoma Highway Patrolmen are stationed here. Stilwell is also home for a unit of the Oklahoma National Guard.

ORGANIZATIONS

Chamber of Commerce, Stilwell Kiwanis Club, the Ad-Co Kiwanis Club, Adair County Cherokee Historical Society, Garden Club, Roundup Club, Study Club, Soroptomist Club, Strawberry Capital Square Dance Club, American Legion, Veterans of Foreign Wars, Masonic Lodge, Order of Eastern Star, Oddfellows Lodge, Rebekah Lodge, Adair County Quarter Horse Association, Adair County Cattlemen's Association, and seven Adair County Extension Homemakers groups.

INDUSTRIAL FOUNDATION

Stilwell Industrial Foundation, a non-profit organization, stands ready to assist

prospective new industries.

RECREATION

Water sports, fishing and picnicking at nearby Lake Tenkiller; small game and deer hunting; Adair Recreation Area, north edge of Stilwell, includes trailer hookups, small lake for fishing and swimming, plus picnic and camping facilities, baseball and softball diamonds, and children's



Young deer hunter with his kill.

This page made possible through the contributions of the following:

MUSKOGEE SEED COMPANY

"Serving Eastern Oklahoma Since 1909"

AAA ABSTRACT CO., INC.

Nancy Garrett, manager, Stilwell

SHARPE'S DEPARTMENT STORE

Stilwell, Oklahoma

ARKANSAS TRUCK LEASE CO., INC.

Springdale, Arkansas

JEAN'S FASHIONS

Merle Norman Cosmetics

WELCOME VISITORS

Larry O'Neal, Shelter Insurance
1115 N. 2nd — 696-3200

CONSOLIDATED PRO

Watsonville, C

G. & P. FOOD

Highway 100 West —

HAGY'S HUS

901-632-0953 —



Newly-com

playground; city swimming courts; two gymnasium theatre. Four golf courses within a 30-mile radius.

The Stilwell Kiwanis Club Stilwell sponsor baseball programs for youngsters i

Stilwell is the home o championship girls bask for two straight years—19

COMMUNICAT

Independently owned pany offers direct distan tone and mobile dial te Telephone Co. has cor building in Stilwell to har growth.



Newly-completed Hickory Village for elderly and handicapped.

playground; city swimming pool; tennis courts; two gymnasiums; and movie theatre. Four golf courses are located within a 30-mile radius.

The Stilwell Kiwanis Club and the City of Stilwell sponsor baseball and swimming programs for youngsters in this area.

Stilwell is the home of the Oklahoma championship girls basketball team (2-A) for two straight years—1978 and 1979.

COMMUNICATIONS

Independently owned telephone company offers direct distance dialing, touch tone and mobile dial telephones. Allied Telephone Co. has constructed a new building in Stilwell to handle its continuing growth.

TELEVISION RECEPTION

Five commercial stations and one educational station in Tulsa, Okla., and two commercial stations in Fort Smith, Ark. A cable system is being installed in Stilwell.

SPECIAL EVENTS

Strawberry Festival, Dogwood and fall foliage tours, rodeos and Adair County Fair.

HEALTH

The new Memorial Hospital of Stilwell is equipped with 50 beds. The Adair County Health Department Building is located in Stilwell. The city has five M.D.'s, two dentists, an osteopath, one optometrist and a chiropractor. Two ambulance services operate in Stilwell.

The Stilwell Nursing Home is a modern

**This page made possible through the
contributions of the following:**

CONSOLIDATED PROCESSING SERVICE
Watsonville, California

G. & P. FOOD STORES
Highway 100 West — Highway 59 North

HAGY'S HUSHPUPIES
901-632-0953 — Shiloh, Tenn.

BILL'S AUTO PARTS
713 N. Second St., Stilwell

CIRCLE INN MOTEL & RESTAURANT
696-7022

CONSOLIDATED INDUSTRIAL EQUIP. CO., INC.
Wats Na. 800-641-4114 — Joplin, Mo. 64801



Downtown street scene featuring covered sidewalk.

This page made possible through the
contributions of the following:

ADAIR COUNTY LIVESTOCK AUCTION, INC.
Harold Williams and Randy Roller

BEACON DRIVE-IN
Fast Food Service — Call in Early 696-3538

**REX'S HOUSE
of BARGAINS**

**SHIRLEY'S NORTHSIDE
DRIVE-IN**

ACE HARDWARE
Jack and Joy Smay

BERT'S 66 SERVICE STATION
Stilwell, Oklahoma

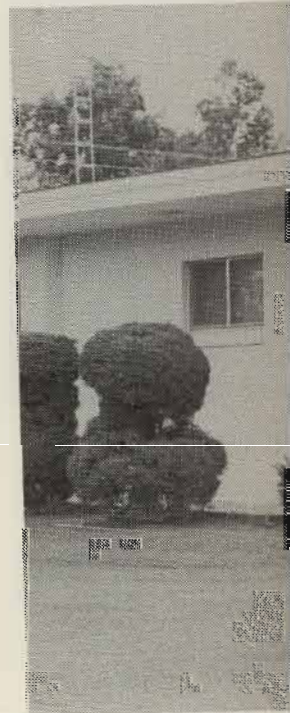
facility with 96 beds. A recently constructed.

CLIMATE

Average winter temperature 30 degrees. Average summer temperature 82.1. Rainfall averages 40 inches a year. Stilwell's elevation is 1,112 feet.

EDUCATION

One elementary school and one high school. Adair County Indian Capital Area Vocational School, is located at north end of town. Flaming Rainbow University has purchased the building formerly used as a school.



Stilwell Public Library is
retires. Mrs Lucille Hurd

Highway

facility with 96 beds. An addition was recently constructed.

CLIMATE

Average winter temperature is 37.4 degrees. Average summer temperature is 82.1. Rainfall averages 42.46 inches per year. Stilwell's elevation above sea level is 1,112 feet.

EDUCATION

One elementary school, one junior high and one high school. Adair County Branch, Indian Capital Area Vocational-Technical School, is located at north edge of Stilwell. Flaming Rainbow University recently purchased the building formerly occupied by

Stilwell High School and is offering classes here. John Brown University, Siloam Springs, Ark., is 30 miles away; University of Arkansas, Fayetteville, 50 miles; and Northeastern State University, Tahlequah, 25 miles.

INDUSTRIAL SITES AVAILABLE

Acreage is available for industries through the Stilwell Industrial Foundation. Many choice locations for industries are available in the area.

The Cherokee Nation is developing an industrial park just south of Stilwell on US 59 with the aid of a government grant. One large building, occupied by Facet In-



Stilwell Public Library is being given this building by Dr and Mrs C.W. Mehegan, from left, when he retires. Mrs Lucille Hurd Hitson, library board president, is at right.

This page made possible through the
contributions of the following:

Wal-Mart Discount City, Stilwell
Highway 100 West, Stilwell, Okla. 696-3141
We Care

dustries, a filter manufacturer, has been erected at the industrial park.

PREVAILING WAGE SCALE

U.S. minimum wage and hour law prevails.

MAJOR INDUSTRIES

Stilwell Foods, Inc., Cherokee Nation Industries, Inc., Facet Industries, Hudson Foods, Inc., Adair County Orchard Co., and Ideal Fruit Farm.

MOTELS AND RESTAURANTS

Two motels with 56 units. Numerous

10,000. A \$500,000 industrial sewer system, which can handle 2,000,000 gallons of industrial wastes daily, was completed recently. Enlargement of the city's water and sewer systems is under way for additional industries.

ELECTRICAL POWER

The City owns its own electrical distribution system, and gets its own power from the Grand River Dam Authority. Special industrial rates are offered. Present capacity

\$28,750,698.46.

INDIAN INDUSTRIAL D ASSISTAN

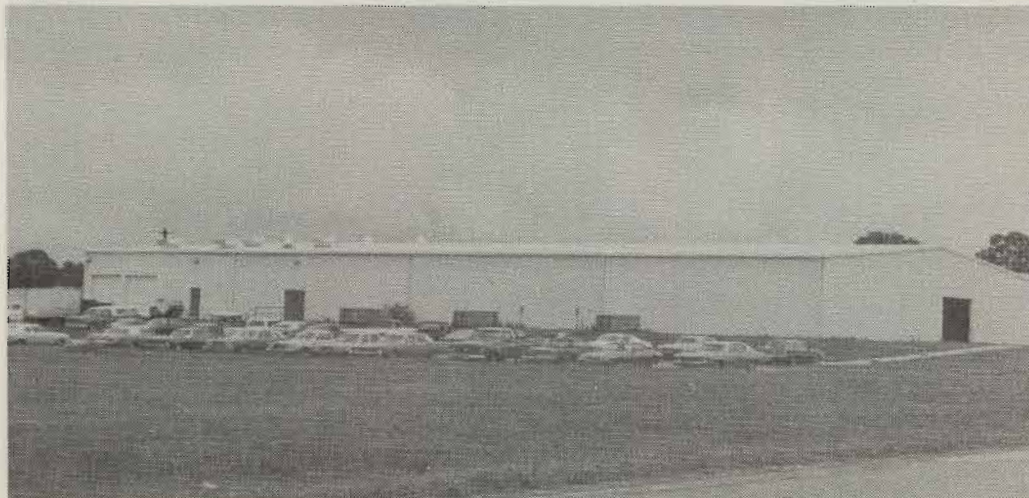
The Bureau of Indian A
tion with Oklahoma emp
agencies, will assist indu
of qualified applicants to
staffing requirements.

With the Arkansas Ri
miles away, Adair Count
tinued growth now that
Verdigris Rivers are open

INDUSTRIES INTER
AREA ARE INVITED T
HODSON, PRESID
STILWELL AREA CHA
MERCE.

RESTROO

Portable restrooms for
will be set up in the area
on Strawberry Festival
you can't find one, as
from a Kiwanian or a Na



Cherokee Nation Industries has grown so much that this new building was recently constructed to go along with CNI's other buildings at the north edge of Stilwell.

good eating places.

WATER AND SEWER SYSTEM

Stilwell has an abundance of clean, pure water—4,000,000 gallons per day—from 140-acre city lake. The lake is large enough to serve Stilwell for three years without a drop of rain falling. Present sewer system is large enough to accommodate a city of

of 5,000 KW could easily be enlarged. Ozarks Electric Cooperative serves the rural areas.

BANKING

The Bank of Commerce, as of Dec. 31, 1981, had total capital and reserves of \$2,863,830.67 with \$25,004,867.58 in deposits and total assets of

**This page made possible through the
contributions of the following:**

OZARKS ELECTRIC COOPERATIVE
"Consumer-Owned Utility"



\$28,750,698.46.

INDIAN INDUSTRIAL DEVELOPMENT ASSISTANCE

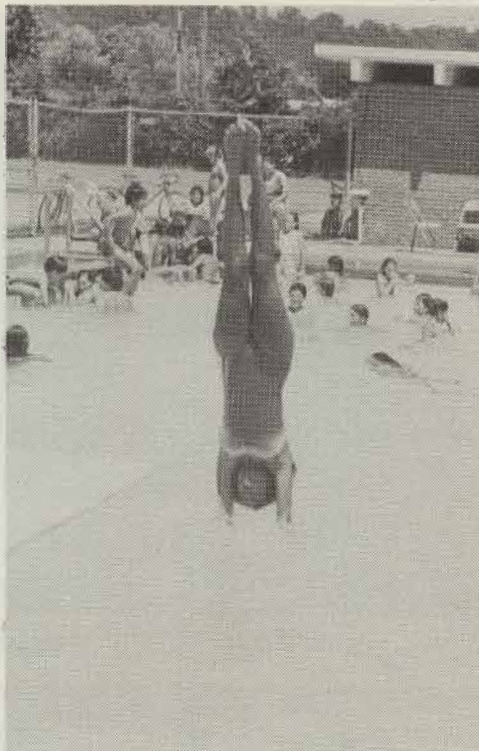
The Bureau of Indian Affairs in cooperation with Oklahoma employment services agencies, will assist industry in recruitment of qualified applicants to meet personnel staffing requirements.

With the Arkansas River only about 30 miles away, Adair County can expect continued growth now that the Arkansas and Verdigris Rivers are opened to navigation.

INDUSTRIES INTERESTED IN THIS AREA ARE INVITED TO WRITE MARK HODSON, PRESIDENT OF THE STILWELL AREA CHAMBER OF COMMERCE.

RESTROOMS

Portable restrooms for men and women will be set up in the area of the band stand on Strawberry Festival Day in Stilwell. If you can't find one, ask for information from a Kiwanian or a National Guardsman.



Stilwell's public swimming pool continues to be a popular summertime spot.



Facet's manufacturing plant south of Stilwell

This page made possible through the
contributions of the following:

FACET ENTERPRISES

U.S. Highway 59 South,
Stilwell, Oklahoma



Stilwell High School



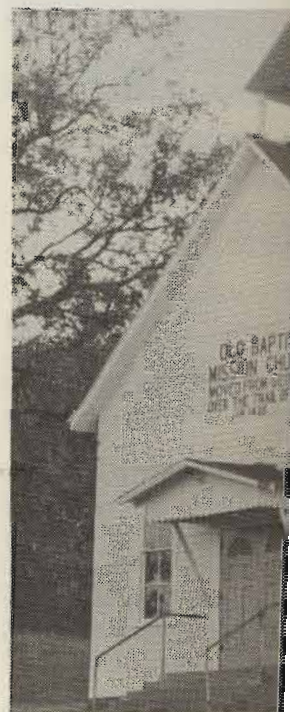
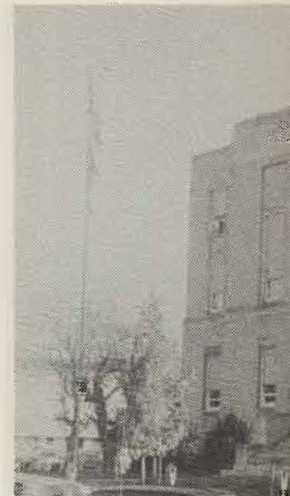
Memorial Hospital in Stilwell

**This page made possible through the
contributions of the following:**

**Garrett Chevrolet
and Olds. Co., Inc.**

**Catron's Store
Dan Vardeman, Manager**

**Pemberton Real Estate
Farms — Ranches — Homes**



**RICHARD JOHNSON
Phone 696-3301**

**ROCK'S IRON &
James, Jane**

**G. & R. SUPPLY
918-682-7430**



Adair County Court House



Old Baptist Mission on US 59 north of Westville

**This page made possible through the
contributions of the following:**

RICHARD JOHNSON PLUMBING
Phone 696-3302 — Stilwell

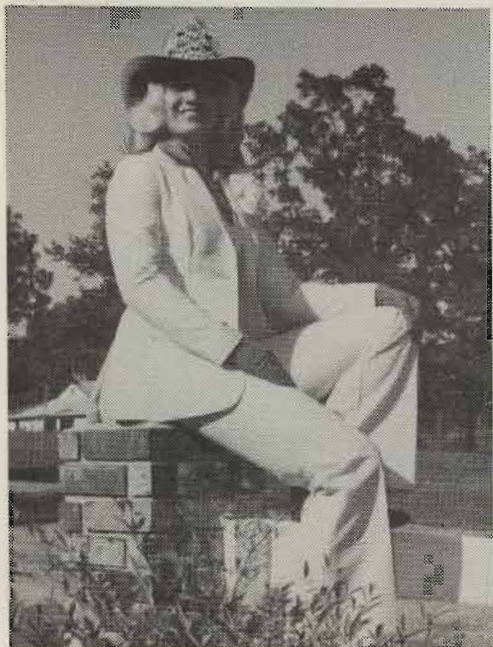
THOMAS QUALITY CLEANERS
Ph. 696-7111 — 112 S. 2nd — Stilwell

ROCK'S IRON & METAL CO.
James, Jane and "Slim"

THE JACK RIDERS
Welcome, Visitors

G. & R. SUPPLY COMPANY
918-682-7430 — Muskogee

THERMAL COLD STORAGE
Tulsa, Oklahoma



Miss Lesa Benham
Roundup Club Queen



Miss Julie Eubanks
Roundup Club Sweetheart

Rodeo starts May 6

Three performances of the Stilwell Roundup Club's 34th annual Championship Festival Rodeo are scheduled this year at the club's arena north of Stilwell on US 59.

The rodeo, sanctioned by the International Rodeo Association, will open the night of Thursday, May 6 and end the night of Saturday, May 8. Starting time is 8 o'clock each night. Admission prices are \$3 for adults and \$1.50 for children.

An estimated 300 cowboys and cowgirls will compete.

David Bailey Rodeo Co. of Tahlequah

will furnish the stock.

Music will be provided by a band from Stilwell High School directed by Patsy Morton.

Rodeo events are: bareback bronc riding, team roping, steer wrestling, calf roping, bull riding, girls barrel racing, and saddle bronc riding.

Cowboys and cowgirls split \$8,495 in prize money at the 1981 Stilwell Roundup Club's Festival Rodeo.

Team ropers Jerry Skaggs, Bartlesville, and Mark Fanning, Ramona, were the top money winners, each taking home \$399.50

**This page made possible through the
contribution of the following:**

VIP Sales Company, Inc.
6349 S. Memorial, Tulsa, Okla.

Jones Truck Lines, Inc.
Springdale, Arkansas

Calf roping is among the sports at the Strawberry Festival Rodeo.

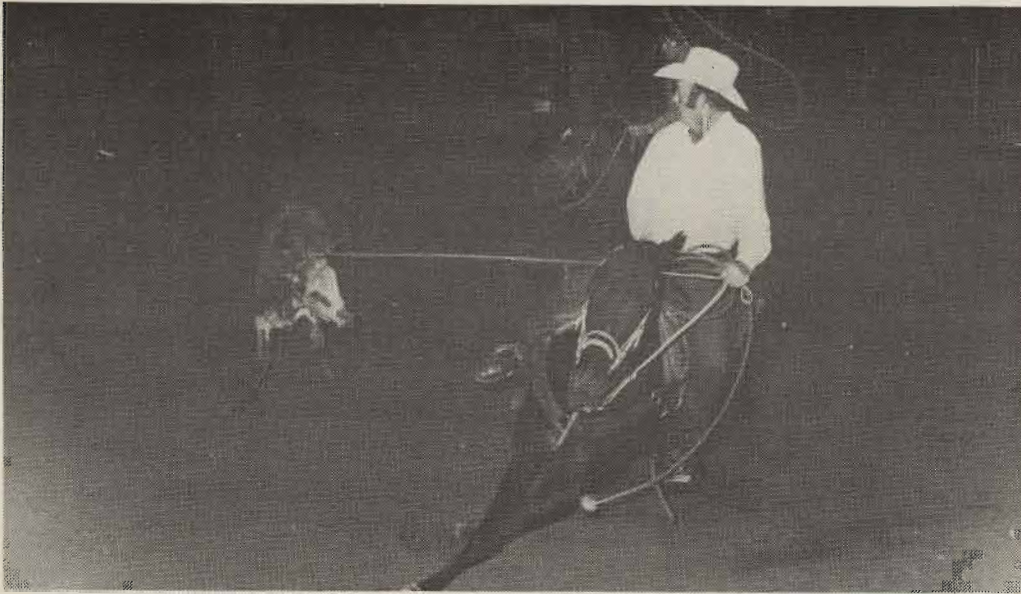
for 6.5 seconds work.

Second high winner was Lindon, Tex., who won champion bull rider of the

Miss Lesa Benham and Julie Eubanks were chosen Roundup Club Queen and sweetheart, respectively, at the Strawberry Festival Rodeo. Each received other awards.

Miss Benham, the 1981 Roundup Club Queen, is daughter of Joe and Linda Benham. She is a senior at Stilwell High School and a member of the Student Council, Key Club, and Sophomore Football and Basketball. She attends the Assemblies Church in Stilwell. Lesa

Stilwell
"Always"



Calf roping is among the seven regular events at each performance of the Stilwell Roundup Club's Strawberry Festival Rodeo.

for 6.5 seconds work.

Second high winner was Mike Waters, London, Tex., who won \$348.74 as the champion bull rider of the Stilwell Rodeo.

Miss Lesa Benham and Miss Julie Eubanks were chosen queen and sweetheart, respectively, at the 1981 Festival Rodeo. Each received a saddle and other awards.

Miss Benham, the 1981 reigning Stilwell Roundup Club Queen, is the daughter of Joe and Linda Benham. She is in the tenth grade at Stilwell High School, and is active in Student Council, Key Club, and FCS. She was also chosen as the 1981 Sophomore Football and Basketball Attendant. She attends the Assembly of God Church in Stilwell. Lesa will ride in the

Strawberry Festival parade on Saturday, and will also reign over the three night performances at the rodeo. She will then turn her title over to a new Queen, who will be announced during the Saturday night performance at the Rodeo.

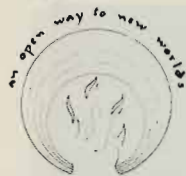
Miss Eubanks, Stilwell Roundup Club Sweetheart, is the daughter of Jim and Judy Eubanks, Stilwell. She is in the fifth grade at Zion School and is active in chorus, cheerleading, basketball, 4-H, and the 4-H Horse Club. Julie will ride at the Queen's side in the Strawberry Festival Parade and will also reign over the three night performances of the rodeo. She will then turn her title over to a new Sweetheart.

Their successors will be announced at the final performance of this year's Rodeo.

**This page made possible through the
contributions of the following:**

**"The Friendly"
Bank of Commerce**

**Stilwell Area Chamber of Commerce
"Always Planning for Stilwell's Future"**



Flaming Rainbow University

BOARD OF TRUSTEES

George Poolaw
(Kiowa)
Chairman

Leo Fishinghawk
(Cherokee)
Vice Chairman

Louis Griffin
(Cherokee)
Sec./Treasurer

Larry Ferguson
ex-officio

Dan Goehring
ex-officio

Richard Nichols
(Pueblo)

Carol Butler
(Kiowa/Caddo)

George Cochran
(Cherokee)

Dr John Edwards
(Absentee-Shawnee)

James Morrison
(Cherokee)

Max Squyres
(Cherokee)

Sam Ed Bush
(Cherokee)

NATIONAL ADVISORY COUNCIL

Dr Mike Alexandroff, Pres.
Columbia College (Chicago)

Dr Robert Cramer, Pres.
Carroll College (Wisconsin)

Dr Robert Gale, Exec. Dir.
Association of
Governing Boards

Dr Morris Keeton, Exec. Dir.
Council for the
Advancement of
Experiential Learning

Dr Gary Quehl, Exec. Dir.
Council of Independent
Colleges (CASC)

NATIONAL ADVISORY BOARD

Iron Eyes Cody
(actor)

Doug Henning
(magician)

Wayne Newton
(entertainer)

Robert Northshield
(Exec. Producer)

CBS Sunday Morning

Welcome
to the

35th Strawberry Festival

Visit our new campus in Stilwell

FRU's
MABEE EDUCATIONAL BUILDING

FRU'S MABEE EDUCATIONAL BUILDING

MABEE CAMPUS
419 North Second Street
Stilwell, Oklahoma 74466
918-774-3644



FLAMING RAINBOW UNIVERSITY
—Mabree Campus—
Renovation Scheduled For Completion By 1983

for your enjoyment

American Indian POW-WOW

Saturday Night, May 8

at the

City Ball Park

(In case of rain at the FRU Campus Gym)

brought to you by the

FLAMING RAINBOW UNIVERSITY
Student Activity Council

FRU is an equal opportunity/affirmative
action institution.

CAMPUS LOCATIONS:

Rt. 5, Box 240 (Hwy. 62)
Tahlequah, Ok. 74464
918-456-5662

419 North Second Street
Stilwell, Ok. 74960
918-774-3644

Oaks Indian Center
Oaks, Ok.
918-868-2979

*A tradition of education:
from elementary to
high school to
college...*

Since 1902 this site has been in continuous use as a school. The main part of the current structure was built to house the Stilwell High School in 1908, with additions in 1914, 1921, 1940 (a WPA project) and 1947. For a time during the 40's, the building also housed the elementary school.

The new Stilwell High School opened in 1980 and FRU began the negotiations and fund-raising necessary to purchase the old building.

In January 1981, the J.E. and L.E. Mabee Foundation awarded FRU \$300,000 to purchase and begin renovation. By February, FRU was at home in the new Mabee Educational Building and the tradition of education on this historic site continues.

When renovations are done, the Mabee Campus will include classrooms, labs, offices, a student center, a conference center, an athletic center, vo-ag facilities and a museum for the Adair County Archives.

Stilwell Church

Most religious faiths in the Stilwell area.

Other denominations and communities surrounding.

The churches include:

ASSEMBLY OF GOD
BELL BAPTIST CHURCH
BUNCH BAPTIST CHURCH
CALVARY CHURCH
CENTRAL BAPTIST CHURCH
CHERRY TREE BAPTIST CHURCH
CHEROKEE CHILDREN'S CHURCH
CHEROKEE HILLS UNITED METHODIST CHURCH
PRESBYTERIAN CHURCH
CHUCULATE CHURCH
CHURCH OF CHRIST
CHURCH OF GOD OF FAITH

EWING CHAPEL HOPE CHURCH
FAITH TABERNACLE
FIRST BAPTIST CHURCH
FIRST CHRISTIAN CHURCH
FIRST UNITED METHODIST CHURCH
FREE HOLINESS CHURCH
GRACE CHAPEL
GUIDING LIGHT CHURCH
HONEY HILL CHURCH
MULBERRY BAPTIST CHURCH
PENTECOSTAL HOLINESS CHURCH
ROCK SPRINGS BAPTIST CHURCH
SEVENTH DAY ADVENTIST CHURCH
UNITED METHODIST CHURCH

OLIVE
FUEL SERVICE

THE HEAD QUARTERS
315 N. 2nd

CIRCLE S FOOD
& Laundry — 2nd & 7th

EAST PARK
J.T. and Jean
Bill and Catherine

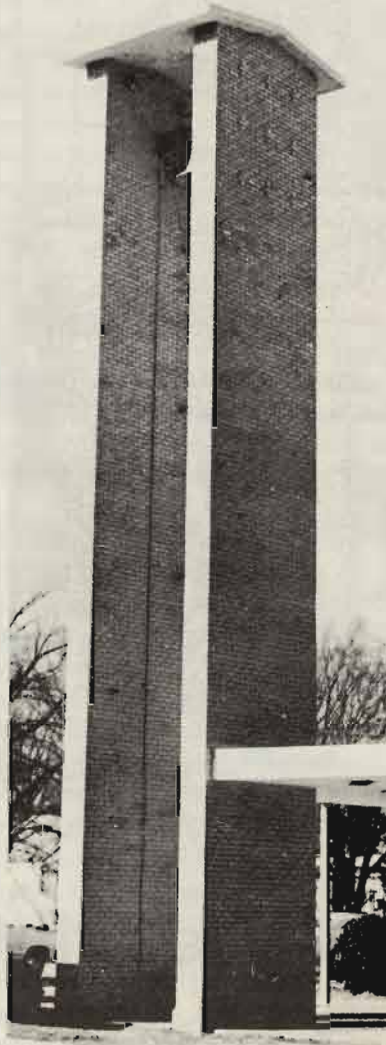
Stilwell Churches

Most religious faiths are represented in the Stilwell area.

Other denominations have churches in communities surrounding Stilwell.

The churches include:

ASSEMBLY OF GOD
BELL BAPTIST CHURCH
BUNCH BAPTIST CHURCH
CALVARY CHURCH OF EAST PEAVINE
CENTRAL BAPTIST CHURCH
CHERRY TREE BAPTIST
CHEROKEE CHILDRENS MISSION
CHEROKEE HILLS UNITED
PRESBYTERIAN
CHUCULATE CHURCH
CHURCH OF CHRIST
CHURCH OF GOD OF THE APOSTOLIC
FAITH
EWING CHAPEL HOLINESS
FAITH TABERNACLE
FIRST BAPTIST CHURCH
FIRST CHRISTIAN CHURCH
FIRST UNITED METHODIST CHURCH
FREE HOLINESS CHURCH
GRACE CHAPEL
GUIDING LIGHT CHURCH
HONEY HILL CHURCH
MULBERRY BAPTIST
PENTECOSTAL HOLINESS CHURCH
ROCK SPRINGS BAPTIST
SEVENTH DAY ADVENTIST CHURCH
UNITED METHODIST INDIAN CHURCH



**This page made possible through the
contributions of the following:**

**OLIVE'S
FUEL SERVICE**
THE HEAD QUARTERS — Ph. 696-HAIR
315 N. 2nd — Stilwell
**CIRCLE S FOOD STORE
& Laundry — 2nd & Maple, 696-4115**
EAST PARK DINER
J.T. and Jean Lowe
Bill and Cathy Swift

AMERICAN PROPANE CORP.
Highway 59 N, Stilwell — 696-2219

VONNIE'S PAWN SHOP
Vonnie, Shirley and Paul
101 W. Walnut
MAYTAG LAUNDRY — SELF-SERVICE
Open 24 Hours — Garry & Sharon Robbins
R&S PAWN SHOP
Singer Sales, 504 S. 2nd, 696-5505
HUNTERS 5 & 10
Stilwell, Okla.



Make Stilwell your Hqs.

Stilwell is within easy driving distance of many points of interest in eastern Oklahoma, so

make Stilwell your headquarters when you come to visit.

This page made possible through the contributions of the following:

H.D. and Bonnie Gound
Wade and Mabel Zumwalt
Glen and Roxie Robbins
Hershal and Penny Dotson
Tom and Vahla Todd
Larry and Gloria Eubanks
John and Juanita Stacy
Ellis and Betty Dewese
Charles and Cindy Crozier
Loren and Laverna Lee
John and Linda Hummingbird
Rev Bob, Beda and Kristi Rowley

Otto and Frances Alderson
Bob and Mae Baker
L.T. and Evana Spray
Roy and Lucille Hitson
Dean and Roberta Jackson
Jim and Pam Carson
Bob and Linda Ray
C.D. and Alyene Mangus
J.D. Hudgins and Family
Hugh and Nina Zimmerman
W.O. and Wilma Hatley
Joseph and Dorothy Smith

Jack and Murel Kay
Kenneth and Johnnie Rains
Wayne and Karen Hopkins
Tommy Dale and Dorothy Worsham
Jim and Betty McGee
Rebecca and James Ferguson
Phil and Thelma Kaniatobe
Dr and Mrs Bill J. Goodwin Jr.
Ronald and Mary Broad
Dr Gary and Linda Jones
Dan and Lynn Smith
Jim and Joy Lindsey

Specto

The return of the marks a return to delici And nothing is more sp ing, than a dessert of s

It can be as simple full of whole berries to cream, yogurt or wh brown sugar. For som uncapped (but was strawberries in melted tant" confections. Lea berry uncoated for a m

However you may p ries, be sure that you ripest-looking ones be ripen after they are pick berries with a natura looking caps. Don't w before using and leav washing to keep wat the berries. Pat them dr after washing.

To bring out the fl strawberries that unfor ripe as they could be, a vanilla extract along w

Strawberries are ex vitamin C and iron. One 60 calories, yet provi cent of the United Sta Daily Allowance for vit per cent for iron.

*Straw
Cheese*

2 cups graham crack
½ cup butter or mar
2 pints fresh strawb
½ cup hot water

. . .A

Spectacular recipe

The return of the strawberry season marks a return to deliciously easy desserts. And nothing is more spectacular, or pleasing, than a dessert of strawberries.

It can be as simple as a beautiful bowl full of whole berries to be dipped in sour cream, yogurt or whipped cream and brown sugar. For something fancier, dip uncapped (but washed and dried) strawberries in melted chocolate for "instant" confections. Leave a little of each berry uncoated for a more colorful effect.

However you may plan to use strawberries, be sure that you buy the reddest, ripest-looking ones because they will not ripen after they are picked. Look for plump berries with a natural shine and fresh-looking caps. Don't wash them until just before using and leave caps on during washing to keep water from soaking into the berries. Pat them dry with paper towels after washing.

To bring out the flavor, especially of strawberries that unfortunately are not as ripe as they could be, add ½ to 1 teaspoon vanilla extract along with the sweetening.

Strawberries are excellent sources of vitamin C and iron. One cup has only about 60 calories, yet provides about 150 per cent of the United States Recommended Daily Allowance for vitamin C and about 8 per cent for iron.

Strawberry

Cheese Torte

- 2 cups graham cracker crumbs
- ½ cup butter or margarine, melted
- 2 pints fresh strawberries
- ½ cup hot water

- 2 envelopes unflavored gelatin
- 2 tablespoons lemon juice
- 2 teaspoons grated lemon peel
- ⅔ cup sugar
- 2 packages (8 ounces each) cream cheese, cut into chunks and softened
- ½ cup sour cream
- 1 cup ice cubes (see note)
- Sweetened whipped cream

In a small bowl combine graham cracker crumbs and butter, tossing to mix thoroughly. Pat half the crumb mixture into the bottom of an oiled 9-by-3-inch springform pan. Chill. Set aside remaining crumb mixture.

Wash, pat dry, stem and slice berries, reserving 12 whole berries for garnish.

In container of an electric blender, combine water, gelatin and lemon juice and peel. Blend until frothy. Scrape down sides.

Add 2 cups of the sliced berries and the sugar. Blend until smooth.

Add cheese, sour cream and ice. Blend until smooth. Chill about 15 minutes until slightly thickened.

Spoon half the slightly thickened cheese mixture into crumb-lined pan. Layer the remaining crumb mixture and the remaining sliced berries over cheese mixture. Top with the remaining cheese mixture. Smooth top. Chill until firm.

To serve, cut into wedges. Dollop each with whipped cream and garnish with reserved whole berries.

Yield: 10 to 12 servings.—Arkansas Gazette, Little Rock

This page made possible through the contributions of the following:

Newly Weds Foods

Chicago, Illinois

Hudson Foods/Farms, Inc.

. . .A Totally Integrated Poultry Company



Krista Baird, daughter of Mr and Mrs L.E. Baird, exhibits a strawberry she picked in a patch near her home.

This page made possible through the
contributions of the following:

Herman Jones — Rex Toney
Okla. Farm Bureau Mutual Ins. Co.

S-H Parts & Equip. House, Inc.
Wats No. 800-632-0050
Springdale, Ark.