

32nd Annual

Strawberry Festival

May 12, 1979

Stilwell, Oklahoma



Queen Donna Terrell

Welcome to the Festival

Just for you!

The Kiwanis Club of Stilwell welcomes you to our 32nd annual Strawberry Festival.

Events of the day include the parade, strawberry auction, bandstand entertainment with Johnnie Lee Wills, Festival Luncheon with Governor George Nigh, free strawberries and ice cream, and finally the Stilwell Roundup Club's

rodeo.

The Kiwanis Club begins finalizing Festival plans in February prior to the Festival. Many hours are spent particularly for your enjoyment.

I hope you enjoy this occasion, and your stay in the Stilwell area in the heart of Green Country.

Larry Eubanks,
President,
Kiwanis Club of Stilwell

Kiwanis Club officers

Larry Eubanks
President
John Freeman
Vice President
Jim Young
Past President
Mark Hodson
Secretary-Treasurer
Joe H. Carson
Past Lieutenant-Governor

Kiwanis Club members

Bob Alderson	Eddie Junker
Robert L. Baker	E.R. Kirkbride
Jerry Blackburn	Tommy Lamb
David Brane	James Lee
Joe H. Carson	Sam Love
Joe L. Carson	Eugene LupPlace
Charles Cosby	Jerry Means
Charles Crozier	Neb Miller
Hershal Dotson	Mark Norman
Larry Eubanks	Tobe O'Neal
Berry A. Ferguson	W.B. Pemberton
Clinton C. Fixin	Bob Ray
James Frazier	Larry Roberts
John Freeman	Jack Smay
H.D. Gound	L.T. Spray
J.L. Hallford	Larry Strauss
W.O. Hatley	Claude Todd
Bob Hawkins	Tom Todd
Leon Hill	Marvin Wright Jr.
Mark Hodson	James Young
Jim Jones	Wade Zumwalt

About the cover

Official photograph of Miss Donna Terrell who will be crowned queen of the 32nd annual Strawberry Festival on May 12.

The cover was made possible through the contribution of Stilwell Foods, Inc.

This page made possible through the contributions of the following:

Varnell's Quik Pick
Open Seven Days a Week

Zero Mountain, Inc.
Fayetteville, Arkansas

J.R. Penick, Jr.
Grower, Packer & Shipper Sweet Potatoes

Progro

Music—Mac Johnson & Th

Parade

National Anthem

Invocation

Rev. D

Salute to the Flag

Crowning of Strawberry F

Introduction of Special G
Remarks by the Honorable

Indian Dance

Cherokee Swingers Squar

Johnnie Lee Wills and his

Awards to Champion Stra

Strawberry Auction

Oklahoma Army National

Free Servings of Strawber

Rodeo, Thursday, Friday a

Program for May 12, 1979

Tobe O'Neal, Master of Ceremonies

Music—Mac Johnson & The Wild Bunch	9:00 a.m.
Parade	10:00 a.m.
Tom Todd, Parade Marshal	
National Anthem	10:00 a.m.
Invocation	10:00 a.m.
Rev. David Brane, First United Methodist Church, Stilwell	
Salute to the Flag	10:00 a.m.
Crowning of Strawberry Festival Queen for 1979	11:00 a.m.
Miss Donna Terrell	
Introduction of Special Guests	
Remarks by the Honorable George Nigh—Governor, State of Okla.	11:15 a.m.
Indian Dance	11:30 a.m.
Tahlequah Indian Club	
Cherokee Swingers Square Dance	11:45 a.m.
Johnnie Lee Wills and his Western Band	12:15 p.m.
Awards to Champion Strawberry Growers	1:45 p.m.
Strawberry Auction	2:00 p.m.
Oklahoma Army National Guard Western Band	2:30 p.m.
Free Servings of Strawberries and Ice Cream	2:30 p.m.
Rodeo, Thursday, Friday and Saturday, May 10, 11, 12	8:30 p.m.
Sponsored by Stilwell Roundup Club	

**This page made possible through the
contributions of the following:**

Reasor's Discount Foods
"We Sell for Less"

Jim Hopkins Ford, Inc.
Stilwell, Oklahoma



1979 Queen Donna Terrell, center, and attendants, Doreen Curry, left, and Vickie Neff.

1979 Festival Queen

Miss Donna Terrell of Stilwell will be crowned queen of the 1979 Strawberry Festival on Saturday, May 12.

Miss Terrell, 20, a sophomore at Northeastern State University, Tahlequah, is the daughter of Mr and Mrs Sam Terrell.

She was chosen queen in competition with seven other girls in March. The judging was based on talent, beauty, poise, and personality.

She will succeed Miss Betsy Cox, daughter of Mr and Mrs Wesley Lee Cox Sr.

Her attendants are: Miss Vicki Neff, 18,

daughter of Mrs Daisy Neff, Route 2 Stilwell; first runnerup; and Miss Doreen Curry, 17, daughter of Mrs Marie Curry, Route 2 Stilwell, second runnerup.

Other contestants were: Misses Lisa Philpott, 16, daughter of Mr and Mrs George Philpott, Stilwell; Danja Lynn Price, 16, daughter of Mr and Mrs Leon Price, Route 2 Stilwell; Rhonda Rider, 17, daughter of Mr and Mrs Jack Rider, Stilwell; Melinda Risinger, 18, daughter of Mr and Mrs Alex James, Stilwell; and Rita Watkins, 21, daughter of Mr and Mrs Waco Watkins.

This page made possible through the contributions of the following:

Means Furniture Inc.,
Jerry & Ann Means

Farmers Cooperative
Feed and Fertilizer

Asgrow Seed Co.
Atlanta, Ga. — San Antonio, Tex.



IGA WAREHOUSE
Dale & Mary

JOLLY CHEF RESTAURANT
Next to Jack's

STILWELL AUTO
Lula Mae H

L.R. WEBB, 774-2
Order Buyer, Stocker



Stilwell High School band



Cherokee Nation's float in 1978 parade

This page made possible through the
contributions of the following:

IGA WAREHOUSE MARKET
Dale & Mary Rowan

JIM DANDY DRIVE-IN
Jim & Betty Carter

JOLLY CHEF RESTAURANT & BAKERY
Next to Jack's Food City

A.M.O. ELECTRIC SUPPLY CO.
Rogers, Arkansas 72756

STILWELL AUTO SUPPLY
Lula Mae Hurlbut

DEJARNATT BROTHERS
Ben & Jim - Dirt Contractors

L.R. WEBB, 774-2854, 774-7327
Order Buyer, Stocker & Feeder Cattle

EAGLE THEATRE
Bargain Entertainment



Float from Cherokee Nation Industries won first



Stilwell Roundup Club standard bearers



Prize-winning Bank of Commerce float



Stilwell Foods' entry was a prize winner

Top floats chosen

Out-of-county judges selected the Stilwell Boy Scouts' float for first prize in the non-commercial category of the 1978 parade, and the Cherokee Nation Industries' float was first in the commercial division.

In the non-commercial category, the

Cherokee Nation Complex placed second, and the Stilwell Future Farmers of America Chapter was third. Among the commercial floats, the Bank of Commerce was second and Stilwell Foods, Inc., third.

This page made possible through the contributions of the following:

STARR'S DRIVE-IN
Addie and Sam D. Starr

BLACKARD REAL ESTATE
Ph. 774-2990—Stilwell

STILWELL FLOWER SHOP
Flowers for all Occasions

WINGFIELD'S GIFT SHOP
Stilwell, Oklahoma

LEE'S APCO
Welcome to Our City

DX-LP GAS
Highway 59 North, Stilwell

CAVINNESS STATION
"Your business appreciated"

BEN FRANKLIN
Stilwell, Oklahoma

HOLIDAY MOTEL
774-7777 Stilwell

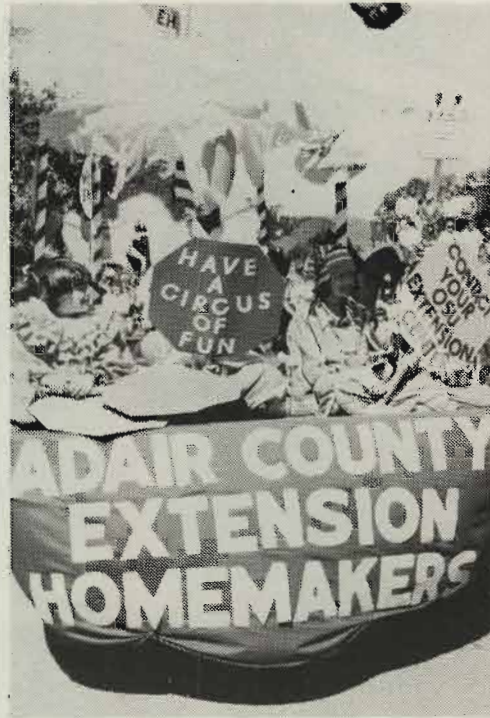
STILWELL FFA CHAPTER
Welcomes You to the Festival

LEE'S CITGO
59-51 Highway "Y"

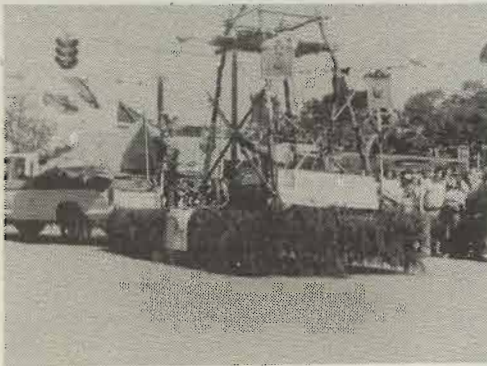
ISAACS' GROCERY & FEED
S.L. and Wilma Isaacs

B. & C. GENERATOR
& Starter Rebuilder





Floats and other entries in the 1978 Strawberry Festival Parade were many and varied. At left is a visiting clown in a pint-size car and at right is the float entered by the Adair County Extension Homemakers. At left is a first prize winner entered by the Stilwell Boy Scout Troop.



Everybody at the 1978 Strawberry Festival seemed bent on having a good time and they had it. The thunderstorm of the previous day left the air windy and cool, but the sun was shining.

The day's events included a 70-minute parade, crowning of the 1978 Strawberry Festival Queen, country and western music, Indian dancing, Festival Luncheon, strawberry auction, serving of free strawberries and ice cream, a carnival, arts and crafts show, and the Stilwell Roundup Club's annual Festival Rodeo.

This page made possible through the contributions of the following:

**Jack's Food City
Stilwell, Oklahoma**

**Oklahoma Allied Telephone Co.
Serving Stilwell and Adair County**



Strawberry Festival Queen of 1978, Miss Betsy Cox, second from left, after she was crowned by Miss Tammy Smothers, left, the 1977 Queen. The queen's attendants were Miss Shelley Keeter, second from right, and Miss Rhonda Rider. In picture at left, the 1978 queen is crowned by her predecessor.

This page made possible through the contributions of the following:

WORSHAM'S CARDINAL
Food Store

STILWELL BUTANE CO.
Sid and Pat

HUNTER'S 5 and 10
Clifton and Christine Hunter

FARMERS PRODUCE AND MILL
Feed — Seed — Fertilizer

ISAACS' CONOCO STATION
Norman and David Isaacs

COLLINS FIRESTONE
Tires — Batteries — Appliances

BILL'S PANELING & CARPET
Mr. B's Shopping Center

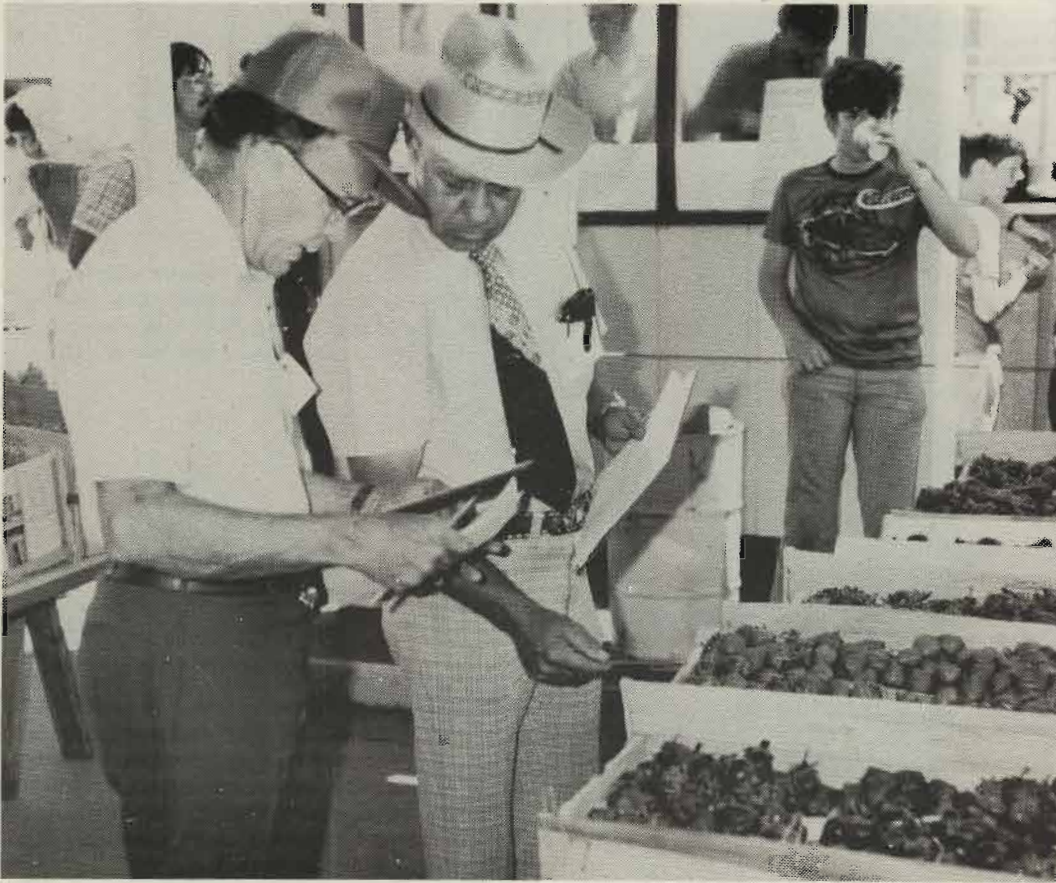
PATTERSON'S TREAT 'N EAT
Virginia Patterson



Judges

A lot of careful consideration was given in selecting the champions of the Stilwell Strawberry Festival.

Last year, a crate of strawberries entered by O.D. Hooper won the championship. It was bought for \$1,350 at the Hower, television auction for his boss, Jimmy KTUL-TV, Tulsa.



Judges pick the best

A lot of careful consideration goes into selecting the championship strawberries at the Stilwell Strawberry Festival.

Last year, a crate of Cardinal berries entered by O.D. Hooper and son, William, won the championship. The crate was bought for \$1,350 at the auction by Bob Hower, television announcer, substituting for his boss, Jimmy Leake, owner of KTUL-TV, Tulsa.

The price was a new record.

Leonard Baird placed second with his crate of Sunrise berries; 3rd, John Auffet, Cardinal; 4th, Andrew Cain and Sons, Cardinal; and 5th, Rex Earl Starr, Cardinal.

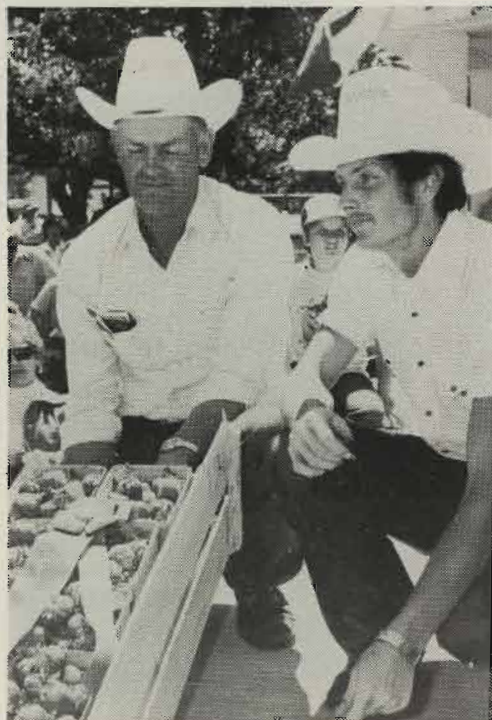
Seventeen exhibitors in all, counting the top five winners, entered the contest. Their berries sold for a record \$4,670 at the auction presided over by Jerry Means.

This page made possible through the contributions of the following:

Tom J. Carson
Insurance Agency

Afco Metals, Inc.
3115 S. Zero St., Ft. Smith, Ark.

Chemco Products, Inc.
Tulsa, Oklahoma



O.D. Hooper and William Hooper display their crate of strawberries that won the grand championship at the 1978 Strawberry Festival. Each quart contained about 16 huge berries.

William Hooper, right, shakes hands with Bob Hower, representing KTUL-TV, Tulsa, after Hower successfully bid \$1,350 for the Hoopers' champion strawberries.



Strawberries be

This page made possible through the contributions of the following:

CHALK BLUFF GROCERY
Don and Barbara Gillespie

SEARS
Alex James, Jane, Helen, Kevin, J.C.

CREPACO, INC.
Food Equip. & Refrig. — Tulsa, Okla.

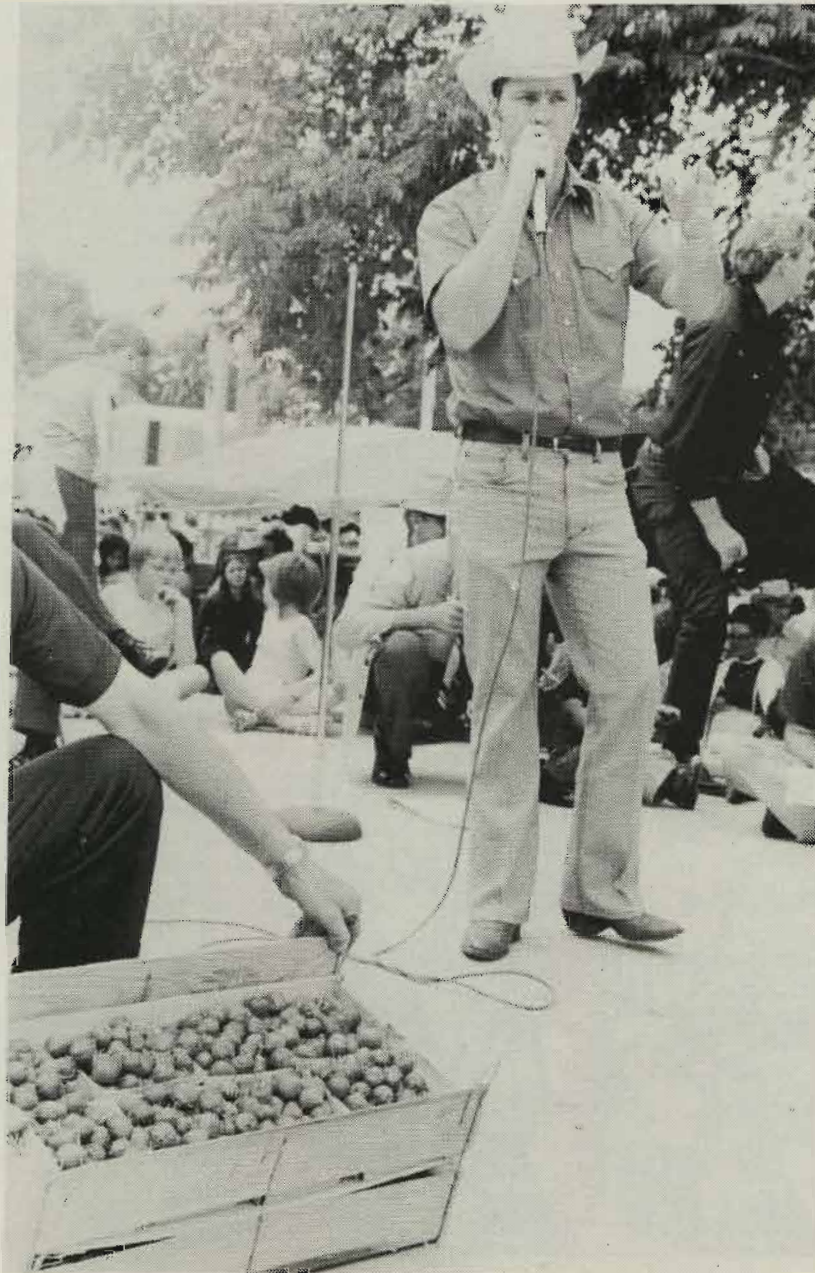
STILWELL MERCANTILE
Burnell Isaacs, Mgr.

FLETCHER'S HARDWARE
Phone 774-7500

SMOKE SHACK BARBECUE
704 S. 2nd St. — Leroy, Sue and Lyle

CHRISTIAN FAMILY BOOK STORE
119 W. Plum Street

STATE FARM INSURANCE CO.
Mark Hodson, Agent



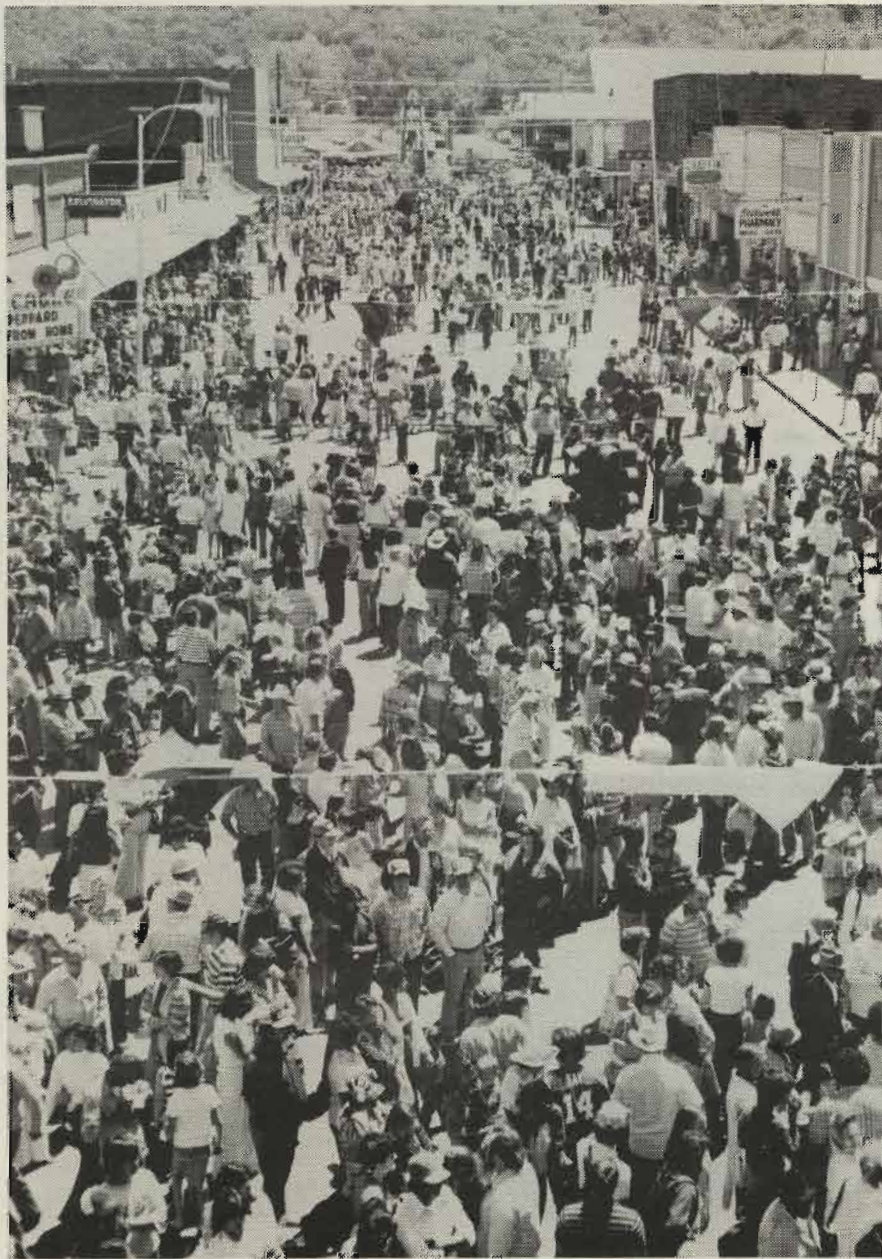
Strawberries being auctioned off following the announcement of winners.

This page made possible through the
contributions of the following:

Ballentine Produce, Inc.
Alma, Arkansas

Carnation Co., Can Division
Fayetteville, Arkansas

Bynum's Used Cars
902 S. Second St.



Part of the crowd at last year's Strawberry Festival.

This page made possible through the
contributions of the following:

Container Corp. of America
Corrugated Containers — Muskogee

C.J. Carson
Insurance Agency

Speedy Mart and
Green Country Automotive Center



SCRUGGS
Radio and Television

PEGGY'S FLOWERS
"Flowers for all Occasions"

STILWELL TRUCK SERVICE
Truck repairing and painting

DOSS STILWELL
Grocery & Market

BRUNER'S AUTO — TRUCKS
Also Used Cars



Free strawberries and ice cream were served to thousands of Strawberry Festival visitors last year. Between 20,000 and 23,000 persons attended the Festival. Skies were clear, but the weather was comfortably cool.

This page made possible through the contributions of the following:

SCRUGGS
Radio and Television

PEGGY'S FLOWERS
"Flowers for all Occasions"

STILWELL TRUCK SERVICE
Truck repairing and parts

DOSS STILWELL
Grocery & Market

BRUNER'S AUTO — TRACTOR SUPPLY
Also Used Cars

WELCOME VISITORS
Larry O'Neal, MFA Insurance

FEEDER'S SUPPLY
Marion and Loreen Blackburn

JAY'S LUNCH BOX
Stilwell

S.&V. FABRICS
Open Thursday and Friday

HOPKINS SELF-SERVICE
US 59 South and SH 100 West

Community-minded

The Stilwell Kiwanis Club has had an unbroken tradition of community service since it was chartered in 1946.

The Club, which meets for lunch each Tuesday at the Stilwell Cafe, is one of 7,273 clubs which make up Kiwanis Clubs International. The organization has a membership of 291,221 and includes clubs in 61 nations and geographical areas.

Under the motto of "We Serve," the Stilwell Kiwanis Club sponsors such diversified activities as the local Boy Scout Troop and the annual Strawberry Festival.

During 1978 the club donated over \$4,500 to various community programs, as well as hundreds of man hours.

Club members participate in fund raising activities such as "Pancake Day" which is traditionally held the morning of the first day of deer season.

The Club also sponsors a concession stand during the summer, at the city's ball park.

After 33 years the Stilwell Kiwanis Club continues to live up to its motto, "We Serve".



Kiwanis Club President Larry Eubanks, center, with, from left: John Freeman, vice president; Jim Young, immediate past president; Jerry Blackburn, secretary-treasurer; and Kiwanis Lt. Gov. Art Hendricks.

This page made possible through the contributions of the following:

WORSHAM TRACTOR
Everything for the farm

ALLIED BEARINGS SUPPLY CO.
Muskogee

RICELAND FOODS
Stuttgart, Arkansas

SCOTT SUPPLY CO. OF ARKANSAS
Springdale, Ark. 501/751-4600

ROBERTS FUNERAL HOME
Serving Adair County Since 1913

INLAND CONTAINER CORP.
Broken Arrow, Oklahoma

HERMAN JONES—REX TONEY
Okla. Farm Bureau Mutual Ins. Co.

OTASCO — Stilwell
Friendly Folks to Serve You

Facts

POPULATION

(1970 census)—City, 215,141. Estimated county population, 16,700.

LABOR FORCE

Male, 2,185; female, 7,141.

TRANSPORTATION

Federal Highways 59, 100, 151 and 100. Highways 51 and 100. miles south. The Kansas Railroad, six truck lines and the area. Stilwell also has runways of 1,600 and



Aerial

Facts about Stilwell

POPULATION

(1970 census)—City, 2,134; Adair County, 15,141. Estimated county population today is 16,700.

LABOR FORCE

Male, 2,185; female, 792.

TRANSPORTATION

Federal Highways 59 and 62; and State Highways 51 and 100. Interstate 40 is 30 miles south. The Kansas City Southern Railroad, six truck lines and a bus line serve the area. Stilwell also has a city airport with runways of 1,600 and 2,000 feet. A new

airport is in the planning stage.

GOVERNMENT

Mayor-City Council. Active volunteer fire department with 20 members. Nine city police officers and six county officers. Two Oklahoma Highway Patrolmen are stationed here. Stilwell is also home for a unit of the Oklahoma National Guard.

ORGANIZATIONS

Chamber of Commerce, Stilwell Kiwanis Club, the Ad-Co Kiwanis Club, Adair County Cherokee Historical Society, Garden Club, Roundup Club, Study Club, Strawberry



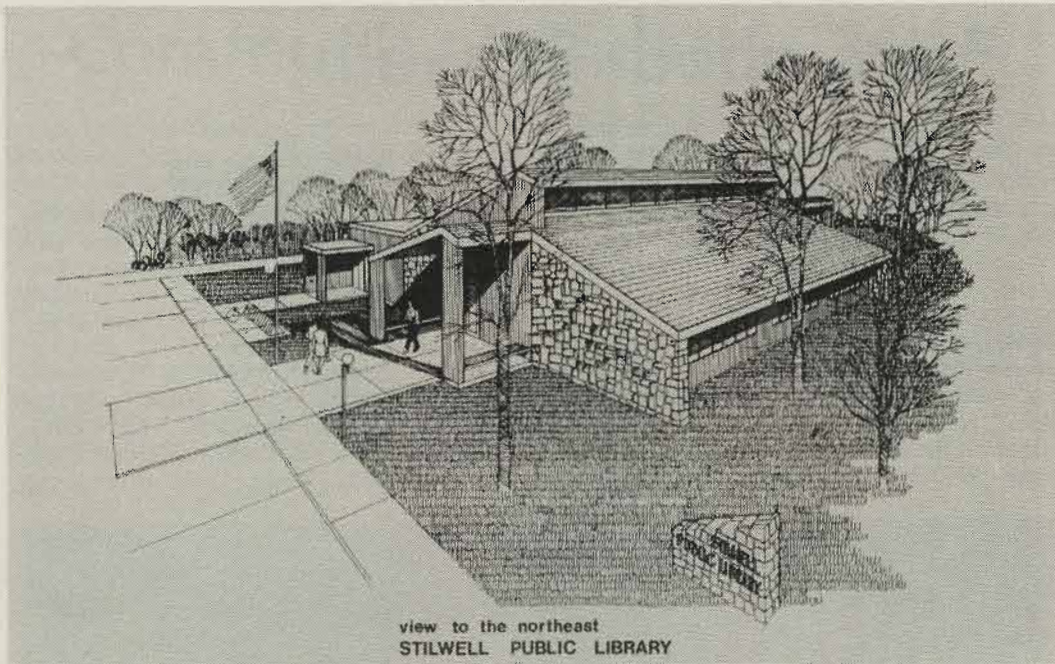
Aerial view of Stilwell, a progressive, growing town.

This page made possible through the contributions of the following:

Stilwell
Democrat-Journal

Leon C. Osborn Co., Inc.
Springdale, Arkansas

Stilwell Lumber Co.
Ph. 774-7058 — Building Supplies



Architect's drawing of the proposed Stilwell Public Library.

Capital Square Dance Club, American Legion, Veterans of Foreign Wars, Masonic Lodge, Order of Eastern Star, Oddfellows Lodge, Rebekah Lodge, Adair County Quarter Horse Association, Adair County Cattlemen's Association, and seven Adair County Extension Homemakers groups.

INDUSTRIAL FOUNDATION

Stilwell Industrial Foundation, a non-profit organization, stands ready to assist prospective new industries.

RECREATION

Water sports, fishing and picnicking at nearby Lake Tenkiller; small game and deer hunting; Adair Recreation Area, north edge of Stilwell, includes small lake for fishing and swimming, plus picnic and camping facilities, and children's playground; city swimming pool; tennis courts; two gymnasiums; and movie theatre. Four golf courses are located within a 30-mile radius.

The Stilwell Kiwanis Club and the City of Stilwell sponsor baseball and swimming programs for youngsters in this area.

Stilwell is the home of the Oklahoma championship girls basketball team (2-A) for two straight years—1978 and 1979.

COMMUNICATIONS

Independently owned telephone company offers direct distance dialing, touch tone and mobile dial telephones. Allied Telephone Co. is constructing a new building in Stilwell to handle its continuing growth.

TELEVISION RECEPTION

Four stations in Tulsa, Okla., and one in Fort Smith, Ark.

SPECIAL EVENTS

Strawberry Festival, Dogwood and fall foliage tours, rodeos and Adair County Fair.

HEALTH

The new Memorial Hospital of Stilwell with 50 beds opened recently. The Adair County Health Department Building is located in Stilwell. The city has four M.D.'s, an osteopath, two optometrists and a chiropractor. Two ambulance services operate in Stilwell area.

The Stilwell Nursing Home is a modern

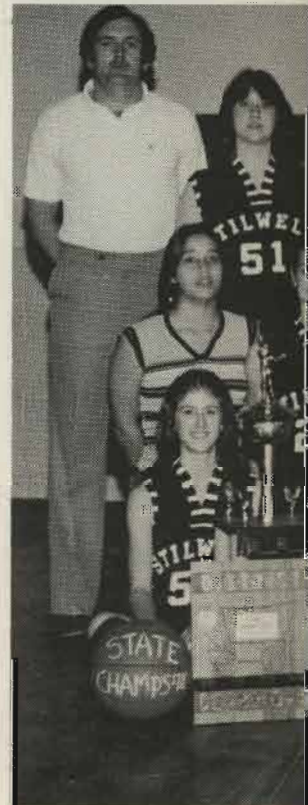
facility with 87 beds. A recently constructed.

CLIMATE

Average winter temperature 45 degrees. Average summer temperature 82.1. Rainfall averages 42.46 inches. Stilwell's elevation above sea level is 1,000 feet.

EDUCATION

One elementary school and one high school. Adair County Indian Capital Area Vocational School, is located at north of Stilwell. The Cherokee Nation regional school for licensed practical nurses is located in Stilwell. John Brown University, Springfield, Ark., is 30 miles away.



For the second year in a row, the Stilwell girls basketball team won the state championship trophy.

This page made possible through the contributions of the following:

Thompson Real Estate
17 N. Second St., Stilwell
Green Country Mobile Home Sales

Turman-Pierce Buick-Pontiac-GMC, Inc.,
905 Central, P.O. Box 40, Poteau, Okla.

facility with 87 beds. An addition was recently constructed.

CLIMATE

Average winter temperature is 37.4 degrees. Average summer temperature is 82.1. Rainfall averages 42.46 inches per year. Stilwell's elevation above sea level is 1,112 feet.

EDUCATION

One elementary school, one junior high and one high school. Adair County Branch, Indian Capital Area Vocational-Technical School, is located at north edge of Stilwell. The Cherokee Nation recently opened a school for licensed practical nurses in Stilwell. John Brown University, Siloam Springs, Ark., is 30 miles away; University

of Arkansas, Fayetteville, 50 miles; and Northeastern State University, Tahlequah, 25 miles.

INDUSTRIAL SITES AVAILABLE

Thirty acres located 1/4 mile north of city limits on the Kansas City Southern Railroad right-of-way is available for industries through the Stilwell Industrial Foundation. Many other choice locations for industries are available in the area.

The Cherokee Nation is developing an industrial park just south of Stilwell on US 59 with the aid of a government grant. One large building, for Facet Industries, a filter manufacturer, has been erected at the industrial park.



For the second year in a row, the Stilwell High School Girls Basketball Team this year won the state championship trophy in Class 2A.

This page made possible through the contributions of the following:

Jean's Fashions
Merle Norman Cosmetics

Hagy's Hushpuppies
901-632-0953 — Shiloh, Tenn.

Diamond International Corp.
Heekin Can Div., Springdale, Ark.



Facet Industries' new filter manufacturing plant south of Stilwell at the Cherokee Nation's industrial park.

PREVAILING WAGE SCALE

U.S. minimum wage and hour law prevails.

MAJOR INDUSTRIES

Stilwell Foods, Inc., Cherokee Nation Industries, Inc., Facet Industries, Adair County Orchard Co., and Ideal Fruit Farm.

MOTELS AND RESTAURANTS

Two motels with 56 units. Numerous good eating places.

WATER AND SEWER SYSTEM

Stilwell has an abundance of clean, pure water—4,000,000 gallons per day—from 140-acre city lake. The lake is large enough to serve Stilwell for three years without a drop of rain falling. Present sewer system is large enough to accommodate a city of 10,000. A \$500,00 industrial sewer system, which can handle 2,000,000 gallons of

industrial wastes daily, was completed recently. Enlargement of the city's water and sewer systems is planned for additional industries.

ELECTRICAL POWER

The City owns its own electrical distribution system, and gets its own power from the Grand River Dam Authority. Special industrial rates are offered. Present capacity of 5,000 KW could easily be enlarged. Ozarks Electric Cooperative serves the rural areas.

BANKING

A new concept in modern banking will soon be coming to Stilwell. The Bank of Commerce is in the process of adding to and renovating its present facility. For added convenience, there will be a large customer parking lot and a four-lane remote teller

facility. The Bank of Commerce has capital and reserves of \$17,868,907.60 in deposits of \$20,354,662.78.

INDIAN INDUSTRIAL ASSISTANCE

The Bureau of Indian Affairs, in cooperation with Oklahoma services agencies, will aid in the recruitment of qualified personnel staffing required.

With the Arkansas River 10 miles away, Adair County

This page made possible through the contributions of the following:

MUSKOGEE SEED COMPANY
"Serving Eastern Oklahoma Since 1909"

AAA ABSTRACT CO., INC.
Nancy Garrett, manager, Stilwell

SHARPE'S DEPARTMENT STORE
Stilwell, Oklahoma

STILWELL CAFE
Bill and Galedia Chambers

ARKANSAS TRUCK LEASE CO., INC.
Springdale, Arkansas

ALLIED ARKANSAS BEARING
Fort Smith, Arkansas

MODERN MAID FOOD PRODUCTS, INC.
6000 E. Evans, Bldg. 3, Suite 333, Denver, Colo.

COCA-COLA BOTTLING CO.
of Fort Smith, Arkansas

MR. B'S PIZZA & ICE
Charles and Deb

PETOSEED
Quality Seed—Stilwell

G. & P. STOP
Highway 100 West

Compliments
COLONIAL BR





Stilwell's National Guard members at summer camp.

facility. The Bank of Commerce has total capital and reserves of \$2,460,900.42 with \$17,868,907.60 in deposits and total assets of \$20,354,662.78.

INDIAN INDUSTRIAL DEVELOPMENT ASSISTANCE

The Bureau of Indian Affairs, in cooperation with Oklahoma employment services agencies, will assist industry in recruitment of qualified applicants to meet personnel staffing requirements.

With the Arkansas River only about 30 miles away, Adair County can expect an



Pentecostal Holiness Church's new building

This page made possible through the contributions of the following:

MR. B'S PIZZA & ICE CREAM PARLOR
Charles and Debbie Bennett

PETOSEED CO., INC.
Quality Seed—Saticoy, Calif.

G. & P. STOP & SHOP
Highway 100 West — Ph. 774-3692

Compliments of
COLONIAL BREAD CO.

BILL'S DISCOUNT AUTO PARTS
Mr. B's Shopping Center

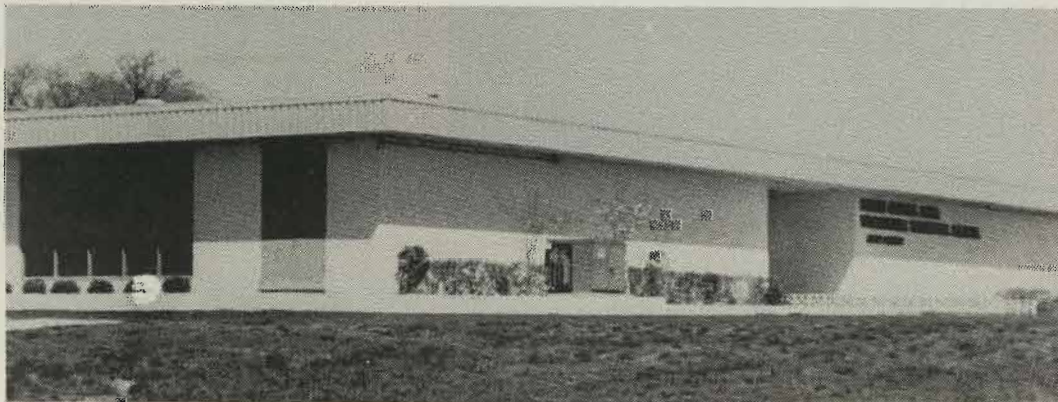
BURLAN WOODS
MEAT PROCESSING

CIRCLE INN MOTEL & RESTAURANT
Tom and Sue Burklin

CONSOLIDATED INDUSTRIAL EQUIP. CO., INC.
Wats No.800-641-4114 — Joplin, Mo. 64801



Stilwell High School Band got new uniforms this past year.



Indian Capital Area Vo-Tech School at Stilwell



Memorial Hospital,

industrial boom now that the Arkansas and Verdigris Rivers are opened to navigation.

INDUSTRIES INTERESTED IN THIS AREA ARE INVITED TO WRITE GENE McNATT, PRESIDENT OF THE STILWELL CHAMBER OF COMMERCE.

MANY ARE CHEROKEES

About 91 per cent of the persons living in the southern part of Adair County are of Cherokee descent. Also, the county has the greatest concentration of Cherokee Indians in the United States.

CHURCH BEGA

The First United Methodist Church at Stilwell had its inception meeting of Methodists with the "Trail of Tears."

This page made possible through the contributions of the following:

ARKHOLA SAND & GRAVEL CO.
Grade A Blocks — Fort Smith, Ark. & Muskogee

WESTINGHOUSE ELECTRIC SUPPLY CO.
Tulsa, Okla — Phone 918/838-3344

ADAIR COUNTY LIVESTOCK AUCTION, INC.
J.C. Morris—Wayne Hampton

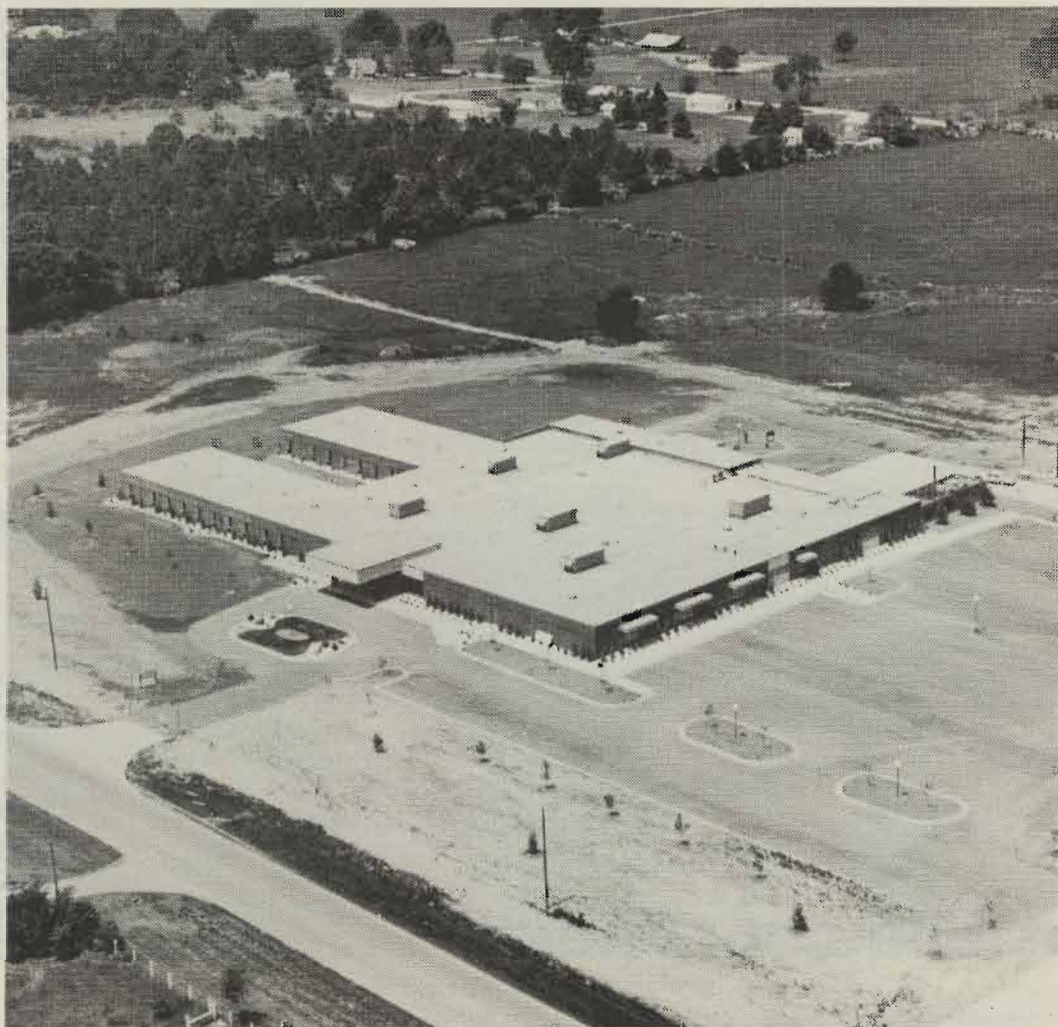
EKCO-R.P. ANDERSON CO., INC.
Dallas, Texas

**JOHNSON'S NORTHSIDE
DRIVE-IN**

ACE HARDWARE
Jack and Joy Smay

**REX'S HOUSE
of BARGAINS**

THE OLD TRADING POST
Antiques and Junque



Memorial Hospital, which opened in 1977, is located on the west edge of Stilwell.

CHURCH BEGAN IN 1839

The First United Methodist Church of Stilwell had its inception in 1839 at a meeting of Methodists who had come over the "Trail of Tears."

FESTIVAL STARTED IN 1948

The Strawberry Festival dates back to 1948 when the Stilwell Kiwanis Club decided to do something about stimulating interest in one of Adair County's economic resources.

**This page made possible through the
contributions of the following:**

"The Friendly"

Bank of Commerce

Stilwell Chamber of Commerce

"Always Planning for Stilwell's Future"



Replica of Old Court House

Old court house

A memorial to the Cherokee Indians of the old Flint District, Cherokee Nation, stands five miles southwest of Stilwell.

This little log court house is a replica of the one erected about 1841.

On this spot, laws were made, trials were held, and sentences were passed.

A small town called Mayes was built around this court house and carried on business until 1895.

The Adair County Cherokee Historical

Society sponsored the rebuilding of this old court house.

WILDLIFE ABOUNDED

Deer, elk, and buffalo were the first grazing animals recorded in this area by Washington Irving in his book, "Tour of the Prairie," written in 1822.

This page made possible through the contributions of the following:

Ozarks Electric Cooperative
"Consumer-Owned Utility"

Fascina

Between two low-lying Ozarks, lies the greatest earth, Stilwell. These two down by the hand of time, and majestic, lie like lions this town with such an int

Stilwell, of course, was n Stilwell, the man who built Southern Railway and president.

Inherits Flai

He had envisioned th for years after having acq



railroading from his grand Stilwell, who had been one of the New York Central, as of the Erie Canal.

The hill east of town (stands) is known as the named after the grand Kenny Davis, who lived in top for so long. He now lies shadow east of the mount mecca for young people on S when they could walk from

Fascinating history

Between two low-lying foothills of the Ozarks, lies the greatest little town on earth, Stilwell. These two foothills, worn down by the hand of time, still rock-ribbed and majestic, lie like lion's paws to protect this town with such an interesting history.

Stilwell, of course, was named for Arthur Stilwell, the man who built the Kansas City Southern Railway and served as its president.

Inherits Flair

He had envisioned the railroad line for years after having acquired a flair for

hill to the Davis Cave and spring east of the mountain.

In 1895, when the Kansas City Southern Railway bought a right-of-way from Mrs. Martha Johnson and Mrs. Elizabeth Freeman, the present site of Stilwell was a red haw thicket interspersed with persimmon trees. Very soon lots were offered for sale and a town plat laid out.

Street Had Everything

Front Street (which parallels the railroad tracks) had everything in the early days. The street consisted of a few grocery stores,



Early-day street scene in Stilwell

railroading from his grandfather, Hamblin Stilwell, who had been one of the founders of the New York Central, as well as a builder of the Erie Canal.

The hill east of town (where the cross stands) is known as the Davis Mountain, named after the grand old man, Uncle Kenny Davis, who lived in a log cabin on its top for so long. He now lies buried within its shadow east of the mountain. This was a mecca for young people on Sunday afternoon when they could walk from town across the

one or two mercantile stores, a drug store and several restaurants. The residences were within a radius of about a block around the town. The business district later expanded to Division and other streets.

Yes, there were board walks, covered over and supported by posts. The streets were lighted by kerosene lanterns hung on these posts. Between these same posts were boards which were originally intended for hitching racks but were occupied by the town's loafers.

This page made possible through the contributions of the following:

Wal-Mart Discount City, Stilwell
We really do sell for less

New marker at the grave of Robert Rogers, grandfather of humorist Will Rogers, was dedicated near Westville with Clem McSpadden, a grand-nephew of Will Rogers, as principal speaker.



Long Trip

In the early days of Stilwell, a trip by wagon to Evansville, Arkansas—nine miles by highway today—took all day. As means of travel became more modern, one might get to the college at Tahlequah—24 miles now—by spending the day on the road.

A passenger could leave Stilwell at 5 a.m. on the Kansas City Southern, get off in Westville, walk across town to the Frisco depot where he could board a Frisco motor (a one-car train) later in the morning, and get to Tahlequah about the middle of the afternoon.

Courthouse Replica

Only five miles southwest of Stilwell stands a memorial to the Cherokee Indians of the old Flint District, Cherokee Nation.

On this beautiful lonely spot stands a little log court house, symbol of the law-abiding Cherokees. This little log building is a replica of the one erected about 1841 (passed down by word of mouth). The Indians who lived in this part of Flint District soon realized the need for law and order.

On this same spot, laws were made, trials were carried out, and sentences were passed. One man, Samuel Adair Bigby, chief justice of the Flint District Court, lies buried within half a mile of the old court house. Only one man paid for his crime by hanging on the old "hanging tree" at this court house.

The little town of Mayes was built around this court house and carried on business until 1895. Flint Masonic Lodge was organized at Mayes and moved to the west part of the present town of Stilwell. When the town was laid out, the Masonic Lodge moved to a long building across Oak Street south of the old Long-Bell Lumber Company.

The Adair County Cherokee Historical Society sponsored the rebuilding of this old court house in 1971-72. This organization wishes to preserve our heritage for posterity. It is the wish of the people of Stilwell to preserve the site and leave a memorial to mark the spot where the old court house stood.—By Lucy Jane Makoske

This page made possible through the contributions of the following:

Beacon Drive-In
Fast Food Service—Call in Early 774-3538

Bruce-Rogers Company
Fort Smith — Rogers, Ark.

Adair County Orchard
Phone 774-7333



FFA Member Tammy

Agricu

In the past 50 years, sa livestock products has b source of agriculture i County.

Adair County products berries, green beans, app are sold all over the r processed locally, while c fresh.

Stilwell is the home of S which has nationwide distr County Orchard Co., whic this four-state region; an Farm.

Corn, small grain, gr improved grasses and leg grown mostly as feed for is regarded as an import

NATIONAL STEEL SI
Tulsa, Okla. 91

RICHARD JOHNSO
Phone 774-3302

ROCK'S IRON & M
"Slim," James s

STILWELL API
RCA, Kelvinate



FFA Member Tammy Parker gets her animal ready for the Adair County Free Fair.

Agriculture is varied

In the past 50 years, sale of livestock and livestock products has been the principal source of agriculture income in Adair County.

Adair County products—including strawberries, green beans, apples and peaches—are sold all over the nation. Some are processed locally, while others are shipped fresh.

Stilwell is the home of Stilwell Foods, Inc., which has nationwide distribution; the Adair County Orchard Co., which is the largest in this four-state region; and the Ideal Fruit Farm.

Corn, small grain, grain sorghums and improved grasses and legumes for hay are grown mostly as feed for livestock. Timber is regarded as an important cash income.

Several poultry processing plants also flourish in this area.

Luncheon is Planned May 12

The Stilwell Kiwanis Club will sponsor a Festival luncheon at the Stilwell Community Facilities Building at 12 o'clock noon Saturday, May 12.

Governor George Nigh will be guest speaker.

Tickets for the luncheon are being sold for \$5 and \$10.

Shuttle buses will transport the luncheon guests from the downtown area to the community building.

**This page made possible through the
contributions of the following:**

NATIONAL STEEL SERVICE CENTER
Tulsa, Okla. 918/582-5291

RICHARD JOHNSON PLUMBING
Phone 774-3302 — Stilwell

ROCK'S IRON & METAL CO.
"Slim," James and Jane

STILWELL APPLIANCE
RCA, Kelvinator Dealer

THOMAS CLEAN CLEANERS
You-All Come to See Us

THE JACK RIDERS
Welcome, Visitors

PRESTON REFRIGERATION CO.
Fort Smith, Arkansas

CAINS COFFEE COMPANY
Hotel & Restaurant Blended Coffee

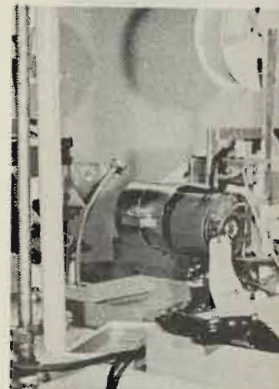
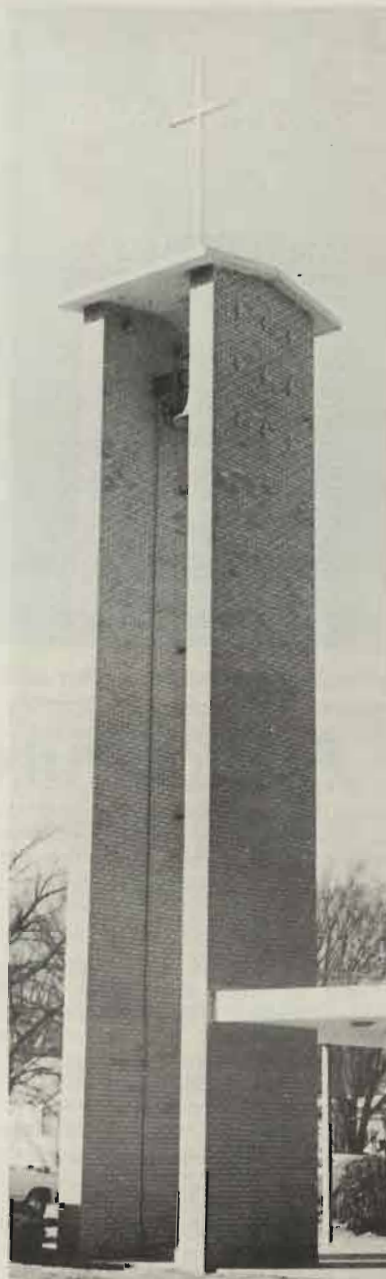
Stilwell Churches

Most religious faiths are represented in the Stilwell area.

Other denominations have churches in communities surrounding Stilwell.

The churches include:

ASSEMBLY OF GOD
BELL BAPTIST CHURCH
CALVARY CHURCH OF EAST PEAVINE
CENTRAL BAPTIST CHURCH
CHERRY TREE BAPTIST
CHEROKEE CHILDRENS MISSION
CHEROKEE HILLS UNITED
PRESBYTERIAN
CHUCULATE CHURCH
CHURCH OF CHRIST
CHURCH OF GOD OF THE APOSTOLIC
FAITH
EWING CHAPEL HOLINESS
FAITH TABERNACLE
FIRST BAPTIST CHURCH
FIRST CHRISTIAN CHURCH
FIRST UNITED METHODIST CHURCH
FREE HOLINESS CHURCH
GRACE CHAPEL
GUIDING LIGHT CHURCH
HONEY HILL CHURCH
MULBERRY BAPTIST
PENTECOSTAL HOLINESS CHURCH
ROCK SPRINGS BAPTIST
UNITED METHODIST INDIAN CHURCH
BUNCH BAPTIST CHURCH



This page made possible through the
contributions of the following:

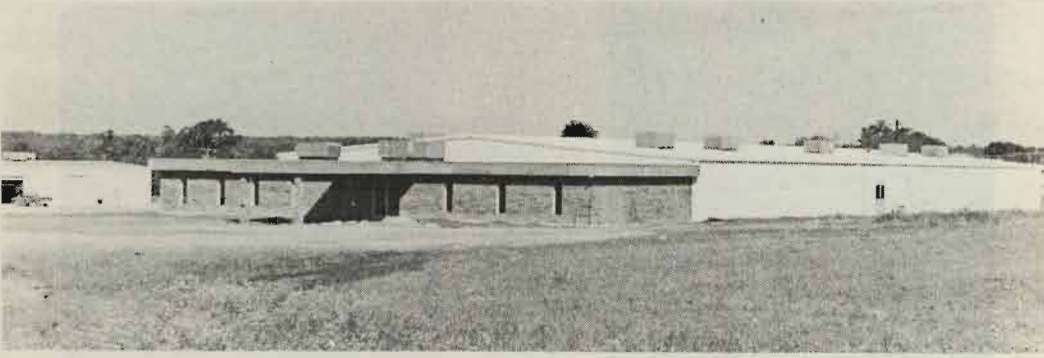
Thermal Cold Storage
Tulsa, Oklahoma

VIP Sales Company
4673 S. 83rd East Ave., Tulsa, Okla. 74145

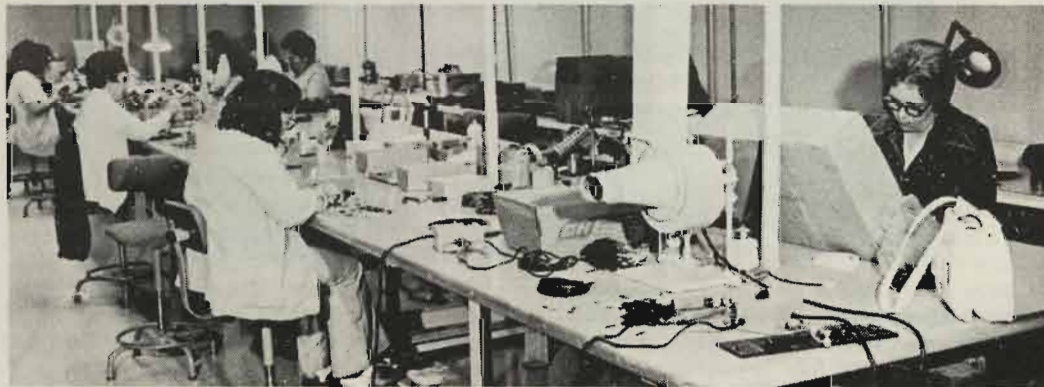
Jones Truck Lines, Inc.
Springdale, Arkansas

CHEP
INVO
ELEC

CI



Cherokee Nation Industries, Inc.



CHEROKEE NATION INDUSTRIES, INC., IS INVOLVED IN MANUFACTURING AND ASSEMBLING ELECTRONIC PARTS AND PRODUCTS.

This page made possible through the contribution of:

Cherokee Nation Industries, Inc.

**Highway 51 West
Stilwell, Oklahoma**



SANDY SANDERS
Rodeo Queen



BRENDA LAWRENCE
Rodeo Sweetheart

Rodeo continues growth

Large crowds are expected to attend all three performances of the Stilwell Roundup Club's 32nd annual Festival Rodeo, opening Thursday, May 10 and continuing through Saturday night, May 12.

The rodeo arena is located about 1½ miles north of Stilwell on US 59. Starting time is 8:30 o'clock each night.

More than 300 cowboys and cowgirls will be here to compete in the International Rodeo Association championship rodeo.

Seven events are scheduled for each performance.

A special added attraction will be the Dillards and their trained horses.

Allan Bing, the Music King, will provide the music for the rodeo.

Bailey and Hall are the stock producers.

Reigning over the rodeo as queen is Miss Sandy Sanders, daughter of Mr and Mrs Warren Sanders; and the princess is Miss Brenda Lawrence, daughter of Mrs Joe Lawrence. The new royalty will be announced at the Saturday night performance.

This page made possible through the contributions of the following:

E.G. and Ella Mae Carroll
H.D. and Bonnie Gound
Wade and Mabel Zumwalt
Glen and Roxie Robbins
Hershal and Penny Dotson
Tom and Vahla Todd
Mr and Mrs E.R. Kirkbride

Otto and Frances Alderson
David and Betty Brane
Levi and Christine Carlile
Bob and Mae Baker
L.T. and Evana Spray
James O. Young
Lucille Hurd

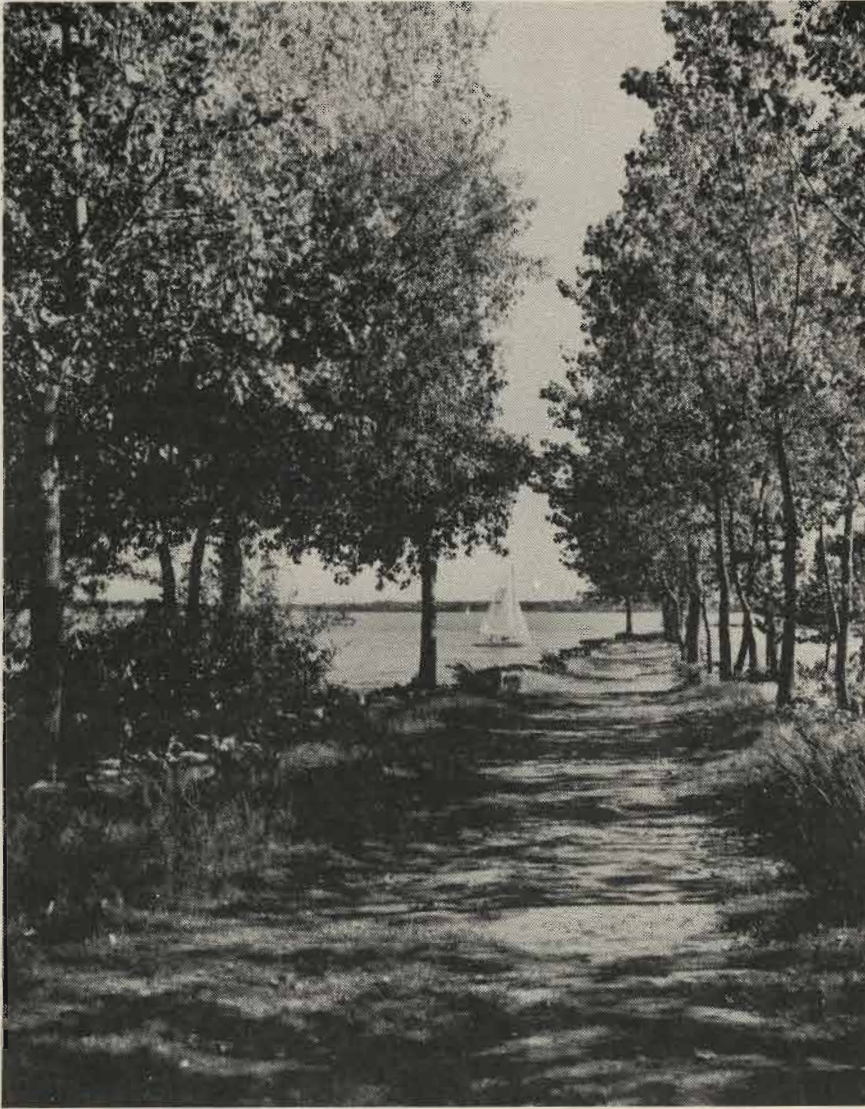
Jerry and Mary White
Kenneth and Johnnie Rains
Gene and Sue LupPlace
Wayne and Karen Hopkins
Tommy Dale and Dorothy Worsham
Jim and Betty McGee
Rebecca and James Ferguson



Lake Tenkiller, just a few west of Stilwell, is considered a vacationer's place. Lake Tenkiller to be Oklahoma lake.

Con

Visi



Lake Tenkiller, just a few minutes' drive west of Stilwell, is considered to be a family lake...vacationer's place. Many consider Lake Tenkiller to be Oklahoma's prettiest lake.

Lake Tenkiller is just one of many attractions in the Stilwell area...so come to the "Green Country" and enjoy spectacular vistas at every turn. Valleys, tree-covered mountains, unlimited water fun.

This page made possible through the contributions of the following:

International Paper Co.,
Container Div., Russellville, Ark.

Rexall Pharmacy
Make This Your Hdqs.

Memorial Hospital
Visiting Hours: 12 noon to 4 p.m. and 6 to 8 p.m.
24-hour emergency services

WHITE DAIRY

of Fort Smith, Arkansas

"Always Ahead of the Parade"

is furnishing the

ice cream for the

32nd Annual Strawberry Festival

through courtesy of

STILWELL

Worsham's

Jack's Food City

Speedy Mart

Isaacs Grocery

WESTVILLE

Town Talk

Lunch Box

WATTS

Watts Discount Center

G. & R. Supply Company
918-682-7430 — Muskogee

S.&H. Parts & Equipment
Wats No. 800-632-0050 — Springdale, Ark.

Tulsa Paper — A Mead Co.
SW's Largest printing paper & industrial pkg. distrib.

Clarklift of Tulsa
918-622-7200 — 8118 E. 44th St.