

31st Annual

Strawberry Festival

May 13, 1978

Stilwell, Oklahoma



Queen Betsy Cox

Working for the community

Since it was chartered in 1946 the Stilwell Kiwanis Club has had an unbroken tradition of community service.

The Club, which meets for lunch each Tuesday at the Stilwell Cafe, is one of 7,273 clubs which make up Kiwanis Clubs International. The organization presently has a membership of 291,221 and includes clubs in 61 nations and geographical areas.

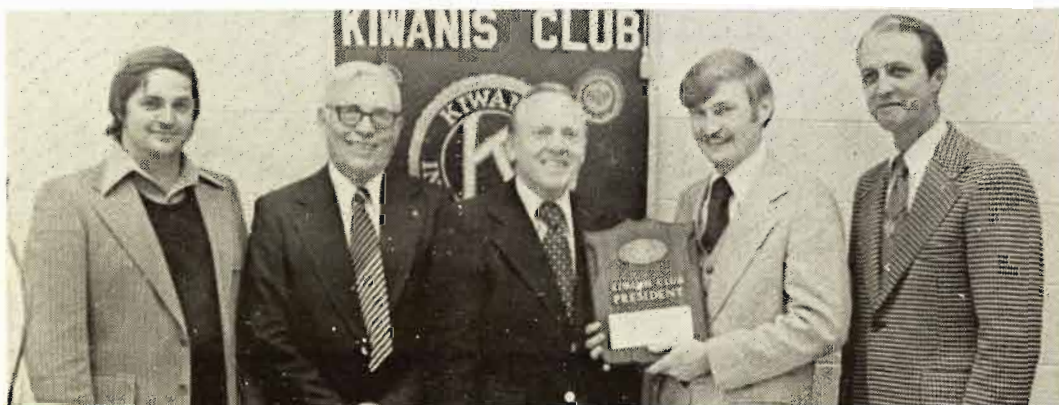
Under the motto of "We Serve," the Stilwell Kiwanis Club sponsors such diversified activities as the local Boy Scout Troop and the annual Strawberry Festival. During 1977 the club donated a total of

\$4,558.63 to various community programs, as well as hundreds of man hours.

Club members participate in fund raising activities such as "Pancake Day" which is traditionally held the morning of the first day of deer season.

The Club also sponsors a concession stand during the summer, at the city's ball park. During 1977, the Club grossed \$700.00 at this concession stand, while donating over \$1600.00 for trophies and equipment.

After 32 years the Stilwell Kiwanis Club continues to live up to its motto, "We Serve".



Kiwanis Club President, Jim Young, center, with, from left: Larry Eubanks, vice president; Louie Griffin, lieutenant-governor; Larry Strauss, immediate past president; and Gene LupPlace, secretary-treasurer.

About the cover

Official photograph of Miss Betsy Cox who will be crowned queen of the 31st annual Strawberry Festival on May 13.

The cover was made possible through the contribution of Stilwell Foods, Inc.

This page made possible through the contributions of the following:

Chemco Products, Inc.
Tulsa, Oklahoma

Afco Metals, Inc.
3115 S. Zero St., Ft. Smith, Ark.

Bruce-Rogers Company
Fort Smith—Rogers, Ark.

Welcome to the Festival

On behalf of the Stilwell Kiwanis Club, I would like to take this opportunity to welcome you to the 1978 edition of the Stilwell Strawberry Festival.

May 13, 1978 is the day people from all over Oklahoma gather in Stilwell to celebrate the harvest of the Strawberry and we of the Stilwell Kiwanis Club want to do everything possible to help you enjoy yourselves on this festive

occasion.

From the morning parade to the Kiwanis luncheon to the lively music of Johnnie Lee Wills and "His Boys", we're sure that there will be something of interest for every member of the family.

So enjoy yourselves and we hope to see you again next year.

Jim Young
President
Stilwell Kiwanis Club

Kiwanis Club officers

Jim Young
President

Larry Eubanks
Vice President

Larry Strauss
Past President

Gene LupPlace
Secretary-Treasurer

Joe H. Carson
Past Lieutenant-Governor

Kiwanis Club members

Bob Alderson	Tommy Lamb
Robert L. Baker	Sam Love
Jerry Blackburn	Eugene LupPlace
David Brane	Jerry Means
Joe H. Carson	Neb Miller
Joe L. Carson	Mark Norman
Phil Compton	Tobe O'Neal
Charles Cosby	W.B. Pemberton
Hershal Dotson	Larry Roberts
Larry Eubanks	C.W. Scott
Berry A. Ferguson	Jack Smay
Clinton C. Fixin	Don Smothers
Don Francen	L.T. Spray
John Freeman	Larry Strauss
H.D. Gound	Claude Todd
J.L. Hallford	Tommy Todd
W.O. Hatley	Marvin Wright Jr.
Mark Hodson	James Young
Jim Jones	Wade Zumwalt
E.R. Kirkbride	

This page made possible through the
contributions of the following:

GREEN COUNTRY
Mobile Home Sales

SCHMIEDING PRODUCE CO., INC.
Springdale, Arkansas

THE TEEPEE
Rec. Center & Grill, Stilwell

BERT'S 66 SERVICE STATION
Stilwell, Oklahoma

FELTS FAMILY SHOE STORE
Foot Wear for the Family

STILWELL LUMBER CO.
Ph. 774-7058—Building Supplies

Program for May 13, 1978

Charlie Scott, Master of Ceremonies

Music—Country Western	9:00 a.m.
Parade	10:00 a.m.
Tom Todd, Parade Marshal	
National Anthem	10:00 a.m.
Miss Oklahoma	
Invocation	10:00 a.m.
Salute to the Flag	10:00 a.m.
Crowning of Strawberry Festival Queen for 1978	11:00 a.m.
Indian Dance	11:15 a.m.
Tahlequah Indian Club	
Music—Johnnie Lee Wills And His Western Band.....	11:30 a.m.
Cherokee Swingers	12:15 p.m.
Indian Dance	12:45 p.m.
Tahlequah Indian Club	
Johnnie Lee Wills And His Western Band	1:15 p.m.
Awards to Champion Strawberry Growers	2:00 p.m.
Strawberry Auction	2:30 p.m.
Free Servings of Strawberries and Ice Cream	3:00 p.m.
Rodeo, Thursday, Friday and Saturday, May 11, 12 and 13	8:30 p.m.
Sponsored by Stilwell Roundup Club	

This page made possible through the
contributions of the following:

ROBERTS FUNERAL HOME
Serving Adair County Since 1913

INLAND CONTAINER CORP.
Ft. Smith, Ark. 501-785-4211

HERMAN JONES—REX TONEY
Okla. Farm Bureau Mutual Ins. Co.

CONSOLIDATED INDUSTRIAL EQUIP. CO.
Fort Smith, Arkansas

MARK AND ANITA NORMAN
OTASCO—Stilwell

MEANS FURNITURE CO.
Jerry & Ann Means



1978 Queen Betsy Cox, center, and attendants, Shelley Keeter, left, and Rhonda Rider.

1978 Festival Queen

Miss Betsy Cox of Stilwell will be crowned queen of the 1978 Strawberry Festival on Saturday, May 13.

Miss Cox, 17, a senior at Stilwell High School, was chosen in competition with seven other girls here in March. The judging was based on talent, beauty, poise, and personality.

She is the daughter of Mr and Mrs Wesley Lee Cox Sr. of Stilwell. She was sponsored in the contest by the Key Club of Stilwell High School.

Miss Cox will succeed Miss Tammy Smothers, 19, daughter of Mr and Mrs Don Smothers of Stilwell.

The new queen's attendants are: Miss

Rhonda Rider, 16, daughter of Mr and Mrs Jack Rider, Stilwell, a junior at Stilwell High School, sponsored by the Bank of Commerce; and Miss Shelley Keeter, 18, daughter of Mr and Mrs Gus Keeter, Route 4 Stilwell, a freshman at Northeastern State University, Tahlequah, sponsored by the Rose Garden Club. Chosen as first alternate attendant was Miss Susan Cook, 18, Stilwell High School senior, daughter of Dr and Mrs W.Z. Cook of Stilwell. She was sponsored by the Stilwell High School Speech Club.

Other contestants were: Misses Sandra Elaine Harp, Diannia Lynn Kimble, Rebecca Michelle Lockard, and Vickie Neff.

This page made possible through the contributions of the following:

**Foremost Milk
A Perfectly Balanced Milk**

**Jim Hopkins Ford, Inc.
Stilwell, Oklahoma**



FIRST PRIZE in the commercial category of the 1977 Strawberry Festival parade was won by Cherokee Nation Industries, Inc.



CHEROKEE NATION of Oklahoma placed first in the non-commercial category of the parade.

This page made possible through the
contributions of the following:

NADINE'S DRY GOODS
Welcome to Our Festival

WORSHAM TRACTOR
Everything for the farm

ALLIED BEARINGS SUPPLY CO.
Tulsa—Muskogee

CREPACO, INC.
Food Equip. & Refrig.—Riverside, Mo.

DAVIS OIL COMPANY DX
210 N. Front St., Stilwell

RICELAND FOODS
Stuttgart, Arkansas



CLOWNS from the Bedouin Temple, Muskogee, added variety to the 1977 Festival Parade.

This page made possible through the contributions of the following:

LLOYD BREWER CITY FILLING STAT.
"46 Years Continuous Service"

CIRCLE INN MOTEL & RESTAURANT
774-7022—Downtown Stilwell

JOLLY CHEF RESTAURANT & BAKERY
Next to Jack's Food City

STARR'S DRIVE-IN
Addie and Sam D. Starr

BLACKARD REAL ESTATE
Ph. 774-2990—Stilwell

STILWELL FLOWER SHOP
Flowers for all occasions

WINGFIELD'S GIFT SHOP
Stilwell, Oklahoma

LEE'S APCO
Welcome to Our City

HOLIDAY MOTEL
774-7777 Stilwell



Mounted patrol of Indians from Muskogee.



Television cameraman rides in parade to photograph crowd.

This page made possible through the
contributions of the following:

SCOTT SUPPLY CO. OF ARKANSAS
Springdale, Ark. 501/751-4600

STILWELL MERCANTILE
Burnell Isaacs, Mgr.

THOMPSON REAL ESTATE
17 N. Second St., Stilwell

REED'S HARDWARE & FURNITURE
Sarah - Quentin - Gene

CATRON'S STORE
Welcome to the Festival

ANDERSON WHOLESALE CO.
Non-Food Dist.—Muskogee, Okla.



FESTIVAL QUEEN, Miss Tammy Smothers, fourth from left, following her coronation. From left are: Earl Walker, past Kiwanis governor from Okemah; Miss DeLana Hudgins, 1976 Festival queen; Miss Connie Campbell, attendant to the 1977 queen; Queen Tammy Smothers; Miss Brenda Littlejohn, attendant; Don Wilson, Texas-Oklahoma governor of Kiwanis International from Fort Worth, Tex.; and Elmer Gawf, Kiwanis lieutenant-governor from Muskogee. AT RIGHT, the queen is crowned by Gawf.



This page made possible through the contributions of the following:

Container Corp. of America
Corrugated Containers—Muskogee

Stilwell
Democrat-Journal

Stilwell Chamber of Commerce

"Always Planning for Stilwell's Future"



JIMMY LEAKE, left in top picture, a Tulsa television station owner, shows the crate of championship strawberries he paid a record \$1,025 for at the strawberry auction on Festival Day 1977. With Leake are Gene and Harold Brannon who exhibited the berries. **AT RIGHT**, the five top crates of strawberries exhibited by their growers following the judging, from left: 1st, Gene and Harold Brannon; 2nd, Homer Hignite; 3rd, Boyd Holiman; 4th, Robert Bennett; and 5th, Frank Ferrell.



This page made possible through the contributions of the following:

Asgrow Seed Co.
Atlanta, Ga. — San Antonio, Tex.

Zero Mountain, Inc.
Fayetteville, Arkansas

Beacon Drive-In

Fast Food Service—Call in Early 774-3538



SMALL PART of the huge crowd above that turned out for the 30th annual Strawberry Festival in 1977. **AT RIGHT**, a couple of visitors enjoy their free strawberries and ice cream.



This page made possible through the contributions of the following:

LLOYD & PAT COLE
Hi, You-All

PETOSEED CO., INC.
Quality Seed—Saticoy, Calif.

VARNELL'S QUIK PICK
Open Seven Days a Week

MR. B'S PIZZA
Charles and Debbie Bennett

PEMBERTON REAL ESTATE
Farms—Ranches—Homes

FLETCHER'S HARDWARE
Phone 774-7500



EATING STRAWBERRIES and ice cream is an enjoyable past-time at the Strawberry Festival.



**This page made possible through the
contributions of the following:**

TOM J. CARSON
Insurance Agency

COCA-COLA BOTTLING CO.
of Fort Smith, Arkansas

G. & P. STOP & SHOP
Highway 100 West Ph. 774-3692

V.E. VANDERHEIDEN AUTOMOTIVE
319 S. 2nd—Wholesale & Retail

PATTERSON TREAT 'N' EAT
Lyn and Beverly Durden

Compliments of
COLONIAL BREAD CO.



RITA WATKINS, 20, was queen of the 1977 Strawberry Festival Rodeo. She is the daughter of Mr and Mrs Waco Watkins, Stilwell.



LORI KETCHER, 11, sweetheart of the 1977 Strawberry Festival Rodeo, is the daughter of Mrs Carolyn Walkingstick and Eugene Ketcher.



MEMBERS of the Cherokee Tribal Council with Principal Chief Ross Swimmer, standing, seventh from left.

This page made possible through the contributions of the following:

**Ozarks Electric Cooperative
"Consumer-Owned Utility"**

**Leon C. Osborn Co., Inc.
Springdale, Arkansas**

More than beauty

More than beauty was involved in their decision when out-of-county judges got their heads together to pick the 1978 Strawberry Festival Queen in Stilwell.

The judges, who also based their decision on talent, personality and poise, admitted

afterward they had a hard time choosing between the girls—all pretty, talented, poised and bubbling over with personality.

Here are pictures of the contestants as they participated in the talent competition.



SUSAN COOK
Alternate



BETSY COX
Queen



SANDY HARP

This page made possible through the
contributions of the following:

EAGLE THEATRE
Bargain Entertainment

CARNATION CO., CAN DIVISION
Mt. Vernon, Missouri

DX-LP GAS
Highway 59 North, Stilwell

AAA ABSTRACT CO., INC.
Nancy Garrett, manager, Stilwell

SHARPE'S DEPARTMENT STORE
Stilwell, Oklahoma

STILWELL CAFE
Welcome, Visitors



SHELLEY KEETER
Second Runnerup



DIANNIA KIMBLE



MICHELLE LOCKARD



VICKIE NEFF



RHONDA RIDER
First Runnerup

This page made possible through the
contributions of the following:

Thermal Cold Storage
Tulsa, Oklahoma

Garrett Chevrolet
and Olds. Co., Inc.

Muskogee Seed Company
"Serving Eastern Oklahoma Since 1909"



Stilwell is a progressive and fast-growing community.

Stilwell facts

Population (1970 census)—City, 2,134; Adair County, 15,141. Estimated county population today is 16,700.

Labor force—Male, 2,185; female, 792.

Transportation—Federal Highways 59 and 62; and State Highways 51 and 100. Interstate 40 is 30 miles south. The Kansas City Southern Railroad, six truck lines and a bus line serve the area. Stilwell also has a city airport with runways of 1,600 and 2,000 feet. A new airport is in the planning stage.

Government—Mayor-City Council. Active

volunteer fire department with 20 members. Nine city police officers and six county officers. Two Oklahoma Highway Patrolmen are stationed here. Stilwell is also home for a unit of the Oklahoma National Guard.

Organizations—Chamber of Commerce, Stilwell Kiwanis Club, the Ad-Co Kiwanis Club, Adair County Cherokee Historical Society, Garden Club, Roundup Club, Study Club, Strawberry Capital Square Dance Club, American Legion, Veterans of Foreign Wars, Masonic Lodge, Order of Eastern

This page made possible through the
contributions of the following:

Rexall Pharmacy
Make This Your Hdqs.

Jack's Food City
Stilwell, Oklahoma

Star, Oddfellows Lodge, Rebekah Lodge, Adair County Quarter Horse Association, Adair County Cattlemen's Association, and seven Adair County Extension Homemakers groups.

Industrial Foundation—Stilwell Industrial Foundation, a non-profit organization, stands ready to assist prospective new industries.

Recreation—Water sports, fishing and picnicking at nearby Lake Tenkiller; small game and deer hunting; Adair Recreation Area, north edge of Stilwell, includes small lake for fishing and swimming, plus picnic and camping facilities, and children's playground; city swimming pool; tennis courts; two gymnasiums; and movie theatre. Four golf courses are located within a 30-mile radius.

The Stilwell Kiwanis Club and the City of Stilwell sponsor baseball and swimming programs for youngsters in this area.

Stilwell is the home of the Oklahoma

championship girls basketball team (2-A) for 1978.

Communications—Independently owned telephone company offers direct distance dialing, touch tone and mobile dial telephones.

Television reception—Four stations in Tulsa, Okla., and one in Fort Smith, Ark.

Special events—Strawberry Festival, Dogwood and fall foliage tours, rodeos and Adair County Fair.

Health—The new Stilwell Memorial Hospital with 50 beds opened recently. The Adair County Health Department Building is located in Stilwell. The city has three M.D.'s, an osteopath, two optometrists and a chiropractor. Two ambulance services operate in Stilwell area.

The Stilwell Nursing Home is a modern facility with 75 beds. An addition is being constructed.

Climate—Average winter temperature is



STATE CHAMPIONSHIP TROPHY is exhibited by members of the Stilwell High School Girls basketball team and Coach Ron McGuire who won the Class 2A title in March of this year. It was the first time for any Stilwell High School team, either boys or girls, to win a state championship.

This page made possible through the contributions of the following:

L.R. WEBB, 774-2854, 774-7327
Order Buyer, Stocker & Feeder Cattle

STILWELL FFA CHAPTER
Welcomes You to the Festival

STILWELL AUTO SUPPLY
Lula Mae Hurlbut

JOE WEST
TV Shop, Stilwell

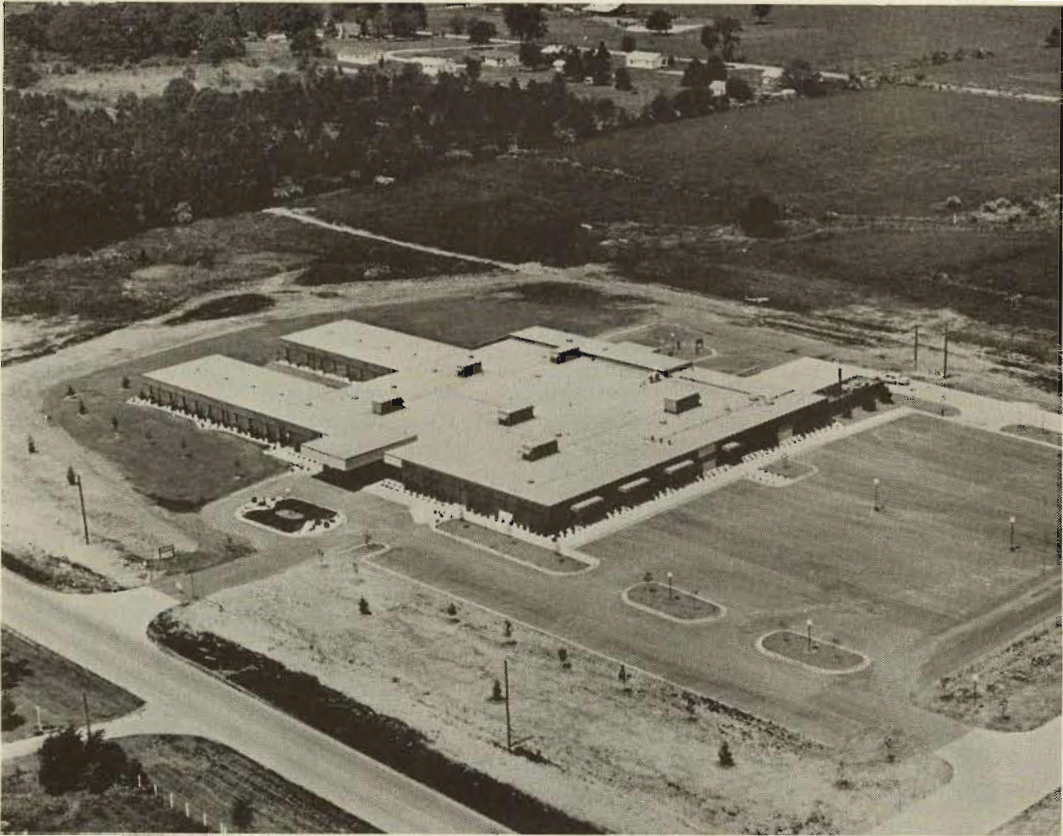
LEE'S CITGO
59-51 Highway "Y"

ISAACS' GROCERY & FEED
S.L. and Wilma Isaacs

WORSHAM'S CARDINAL
Food Store

STILWELL BUTANE CO.
Sid and Pat

CASH PAWN SHOP
Darryl Lockard



MEMORIAL HOSPITAL, open less than a year, is located on SH 100 at the west edge of Stilwell.

37.4 degrees. Average summer temperature is 82.1. Rainfall averages 42.46 inches per year. Stilwell's elevation above sea level is 1,112 feet.

Education—One elementary school, one junior high and one high school. Adair County Branch, Indian Capital Area Vocational-Technical School, is located at north edge of Stilwell. The Cherokee Nation recently opened a school for licensed practical nurses in Stilwell. John Brown University, Siloam Springs, Ark., is 30 miles away; University of Arkansas, Fayetteville, 50 miles; and Northeastern State University, Tahlequah, 25 miles.

Industrial sites available—Thirty acres located 1/4 mile north of city limits on the Kansas City Southern Railroad right-of-way is available for industries through the Stilwell Industrial Foundation. Many other choice locations for industries are available in the area.

Garan, Inc., a major clothing manufacturer, recently chose Stilwell as a site for one of its plants. The company is in temporary quarters in Stilwell until it can construct a new plant.

The Cherokee Nation is developing an industrial park just south of Stilwell on US 59 with the aid of a government grant. One

This page made possible through the contributions of the following:

E.G. and Ella Mae Carroll
H.D. and Bonnie Gound
Wade and Mabel Zumwalt
Glen and Roxie Robbins
Hershal and Penny Dotson
Tom and Vahla Todd

Mr and Mrs E.R. Kirkbride
Otto and Frances Alderson
David and Betty Brane
Levi and Christine Carlile
Bob and Mae Baker
L.T. and Evana Spray
James O. Young

Lucille Hurd
Jerry and Mary White
Jean McConnell & Dorothy Reed
Dr and Mrs Jimmie Taylor
Kenneth and Johnnie Rains
Gene and Sue LupPlace

large building, for Facet Industries, a filter manufacturer, has been erected at the industrial park.

Prevailing wage scale—U.S. minimum wage and hour law prevails.

Major industries—Stilwell Foods, Inc., Cherokee Nation Industries, Inc., Garan, Inc., Facet Industries, Adair County Orchard Co., and Ideal Fruit Farm.

Motels and Restaurants—Two motels with 56 units. Numerous good eating places.

Water and sewer system—Stilwell has an abundance of clean, pure water—4,000,000 gallons per day—from 140-acre city lake. The lake is large enough to serve Stilwell for three years without a drop of rain falling. Present sewer system is large enough to accommodate a city of 10,000. A \$500,000 industrial sewer system, which can handle 2,000,000 gallons of industrial wastes daily, was completed recently.

Electrical power—The City owns its own electrical distribution system, and gets its own power from the Grand River Dam Authority. Special industrial rates are offered. Present capacity of 5,000 KW could easily be enlarged. Ozarks Electric Cooperative serves the rural areas.

Banking—Bank of Commerce has total capital and reserves of \$1,734,868.42 with \$16,718,013.67 in deposits and total assets of \$18,841,135.68.

Indian Industrial Development Assistance—The Bureau of Indian Affairs, in cooperation with Oklahoma employment services agencies, will assist industry in recruitment of qualified applicants to meet personnel staffing requirements.

With the Arkansas River only about 30 miles away, Adair County is looking for an industrial boom now that the Arkansas and Verdigris Rivers are opened to navigation.

INDUSTRIES INTERESTED IN THIS AREA ARE INVITED TO WRITE CHARLES COSBY, PRESIDENT OF THE STILWELL CHAMBER OF COMMERCE.



STILWELL'S Swimming Pool is a popular spot.

RESTROOMS

Fifteen portable restrooms for men and women will be set up in downtown Stilwell on Strawberry Festival Day by the City of Stilwell. If you can't find one, ask for information from a Kiwanian or a National Guardsman.

BERRIES ON SALE

The public will pay a minimum of \$13 per crate of strawberries on Festival Day in Stilwell. Growers will be selling their berries in the parking lot just west of the Adair County Court House, as in the past, but buy your berries early! They go fast.

SECOND SATURDAY

The Strawberry Festival is held in Stilwell on the second Saturday of May each year.

This page made possible through the contributions of the following:

J.R. Penick, Jr.

Grower, Packer & Shipper Sweet Potatoes

**Memorial Hospital and Staff
Stilwell, Oklahoma**

**Anderson Wholesale Co.
Muskogee, Oklahoma 74401**



Deer plentiful



Stilwell State Park



New Assembly of God Church



Cherokee Nation's LPN School



Stilwell's National Guardsmen leaving for summer camp

**This page made possible through the
contributions of the following:**

DEJARNATT BROTHERS
Ben & Jim—Dirt Contractors

REASOR'S DISCOUNT FOODS
"We Sell for Less"

REX'S HOUSE
of BARGAINS

THOMAS CLEAN CLEANERS
You-All Come to See Us

THE JACK RIDERS
Welcome, Visitors

PRESTON REFRIGERATION CO.
Fort Smith, Arkansas



FACET INDUSTRIES' new filter manufacturing plant is located at the Cherokee Nation's industrial park just south of Stilwell on US 59.



Stilwell's Public Library

**This page made possible through the
contributions of the following:**

JIM DANDY DRIVE-IN
Jim & Betty Carter

HUNTER'S 5 and 10
Clifton and Christine Hunter

FARMERS PRODUCE AND MILL
Feed—Seed—Fertilizer

ISAACS' CONOCO STATION
Stilwell, Oklahoma

COLLINS FIRESTONE
Tires—Batteries—Appliances

SEARS
Alex and Jan James

STATE FARM INSURANCE CO.
Mark Hodson, Agent

MAYTAG AUTOMATIC LAUNDRY
Gene and Eula Cranford

SCRUGGS
Radio and Television

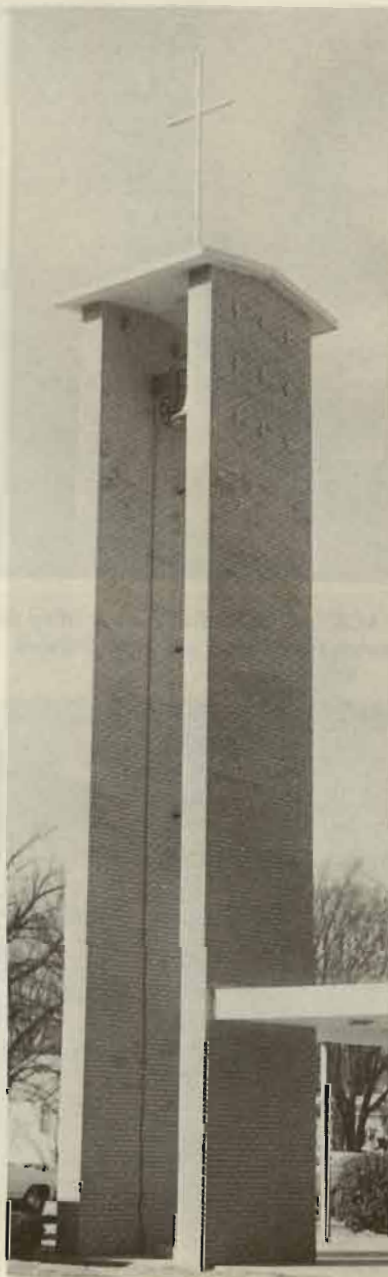
Stilwell Churches

Most religious faiths are represented in the Stilwell area.

Other denominations have churches in communities surrounding Stilwell.

The churches include:

ASSEMBLY OF GOD
BELL BAPTIST CHURCH
CALVARY CHURCH OF EAST PEAVINE
CENTRAL BAPTIST CHURCH
CHERRY TREE BAPTIST
CHEROKEE CHILDRENS MISSION
CHEROKEE HILLS UNITED
PRESBYTERIAN
CHUCULATE CHURCH
CHURCH OF CHRIST
CHURCH OF GOD OF THE APOSTOLIC
FAITH
EWING CHAPEL HOLINESS
FAITH TABERNACLE
FIRST BAPTIST CHURCH
FIRST CHRISTIAN CHURCH
FIRST UNITED METHODIST CHURCH
FREE HOLINESS CHURCH
GRACE CHAPEL
GUIDING LIGHT CHURCH
HONEY HILL CHURCH
MULBERRY BAPTIST
PENTECOSTAL HOLINESS CHURCH
ROCK SPRINGS BAPTIST
UNITED METHODIST INDIAN CHURCH
BUNCH BAPTIST CHURCH



This page made possible through the
contributions of the following:

CAINS COFFEE COMPANY
Hotel & Restaurant Blended Coffee

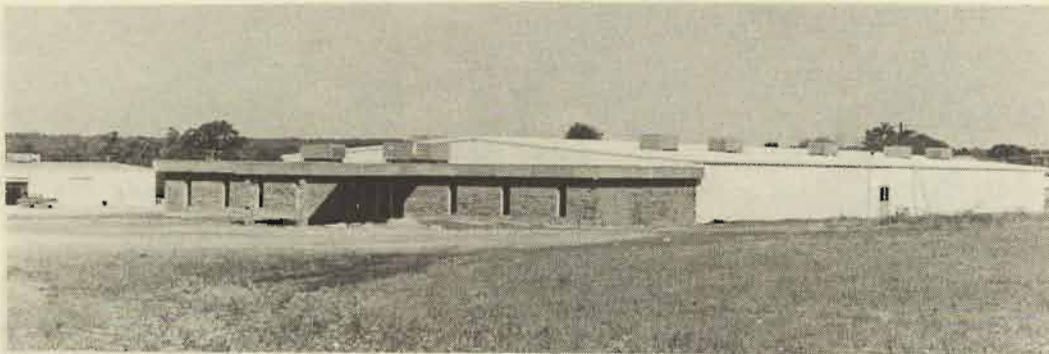
WONDER BREAD
Fayetteville, Arkansas

NATIONAL STEEL SERVICE CENTER
Tulsa, Okla. 918/582-5291

STILWELL READY MIX
U.S. 59 North

ROCK'S IRON & METAL CO.
"Slim," James and Jane

STILWELL APPLIANCE
RCA, Kelvinator Dealer



Cherokee Nation Industries, Inc.



**CHEROKEE NATION INDUSTRIES, INC., IS
INVOLVED IN MANUFACTURING AND ASSEMBLING
ELECTRONIC PARTS AND PRODUCTS.**

**This page made possible through the
contribution of:**

Cherokee Nation Industries, Inc.

**Highway 51 West
Stilwell, Oklahoma**



People of all ages picking strawberries.

Agriculture is big business

In the past 50 years, sale of livestock and livestock products has been the principal source of agriculture income in Adair County.

Adair County products—including strawberries, green beans, apples and peaches—are sold all over the nation. Some are processed locally, while others are shipped fresh.

Stilwell is the home of Stilwell Foods, Inc.,

which has nationwide distribution; the Adair County Orchard Co., which is the largest in this four-state region; and the Ideal Fruit Farm.

Corn, small grain, grain sorghums and improved grasses and legumes for hay are grown mostly as feed for livestock. Timber is regarded as an important cash income.

Several poultry processing plants also flourish in this area.

VIP Luncheon On Festival Day

The Stilwell Kiwanis Club will sponsor a VIP luncheon at the Stilwell Community Facilities Building at 12 o'clock noon Saturday, May 13.

Tickets for the luncheon are being sold for \$5 and \$10.

Shuttle buses will transport the luncheon guests from the downtown area to the community building.

GOOD CROP EXPECTED

A good-sized strawberry crop is predicted for Adair County this year. The growers have voted to charge between \$13 and \$15 per crate—depending on quality—on Festival Day.

RED HAW THICKET

Stilwell was a red haw thicket, interspersed with persimmon trees, in 1895 when the Kansas City Southern Railway bought a right-of-way from Mrs Martha Johnson and Mrs Elizabeth Freeman.

**This page made possible through the
contributions of the following:**

**Diamond International Corp.
Heekin Can Div., Springdale, Ark.**

**Jones Truck Lines, Inc.
Springdale, Arkansas**



Stilwell in center

Stilwell is within easy driving distance of many points of interest in eastern

Oklahoma, so make Stilwell your headquarters when you come to visit.

This page made possible through the contributions of the following:

PEGGY'S FLOWERS
"Flowers for all Occasions"

STILWELL TRUCK SERVICE
Truck repairing and parts

CHUB'S COUNTRY STORE
323 S. 2nd St., Stilwell

ACE HARDWARE
Jack and Joy Smay

FEEDER'S SUPPLY
Marion and Loreen Blackburn

DOSS STILWELL
Grocery & Market

BRUNER'S AUTO — TRACTOR SUPPLY
Also Used Cars

WELCOME VISITORS
Larry O'Neal, MFA insurance

ATTEND FESTIVAL RODEO
Stilwell Roundup Club

Miscellany

Stilwell was named for Arthur Edward Stilwell who built the Kansas City Southern Railway, founded several dozen hamlets and villages, and created a city, Port Arthur, Tex., named for himself. Between 1886 and 1912, he made sizable contributions to the economic growth of the south-central states of Oklahoma, Arkansas, Louisiana, and Texas.

The First United Methodist Church of Stilwell had its inception in 1839 at a meeting of Methodists who had come over the "Trail of Tears."

The United States Congress passed a bill in 1830 for the removal of the Five Civilized Tribes from the southeastern part of the U.S. into Indian Territory, now known as Oklahoma. All of Adair County became a part of the Cherokee Nation. Many Cherokees were already here when, in about 1838, the Eastern Cherokees were forced to leave their homes in Georgia, Tennessee, and North Carolina and were driven over the infamous "Trail of Tears," ending in the northern part of Adair County at Mission Mountain.

The Strawberry Festival dates back to 1948 when the Stilwell Kiwanis Club decided to do something about stimulating interest in one of Adair County's economic resources.

Adair County was named in honor of a prominent Cherokee jurist and educator.

About 91 per cent of the persons living in the southern part of Adair County are of Cherokee descent. Also, the county has the greatest concentration of Cherokee Indians in the United States.

Favorite Recipes

STRAWBERRY ICE CREAM

(Mrs. Bob Bailey)

- 6 eggs
- 2 cans Milnot
- 1/4 tsp. salt
- 2 1/2 cups sugar
- 3 cups strawberries (crushed)
- 1 T. vanilla

Beat eggs until light color. Add sugar gradually. Add salt, vanilla, and crushed strawberries in blender. Add Milnot and beat at low speed until mixed good, then add strawberries.

Makes 1 gallon.

STRAWBERRY PRESERVES

(Miss Lucille Starr)

Prepare, wash and drain strawberries. Fill quart strawberry box with berries and empty into 5 1/2 quart pan. Add 1/2 box sure-jell and stir until dissolved. Add 3 cups sugar and mix well. Let come to rolling boil. Time and let boil 6 or 7 minutes. Skim off foam. Empty into Pyrex dish and let stand a day or so before putting into jars. Store in freezer or refrigerator. Will keep indefinitely.

STRAWBERRY PIE

(Mrs Floyd Cox, Zion)

- 1 quart frozen strawberries thawed and drained

Reserve berries to add later.

In sauce pan add:

- 2 cups drained strawberry juice
- 1 cup sugar
- 5 tablespoons cornstarch (rounded)

Cook 3 minutes. Add red food coloring. Cool. Add strawberries and 3 sliced bananas. Pour into baked pie shells. Top with whipped cream. Makes two 8-inch pies.

This page made possible through the contributions of the following:

ARKHOLA SAND & GRAVEL CO.
Grade A Blocks—Fort Smith, Ark. & Muskogee

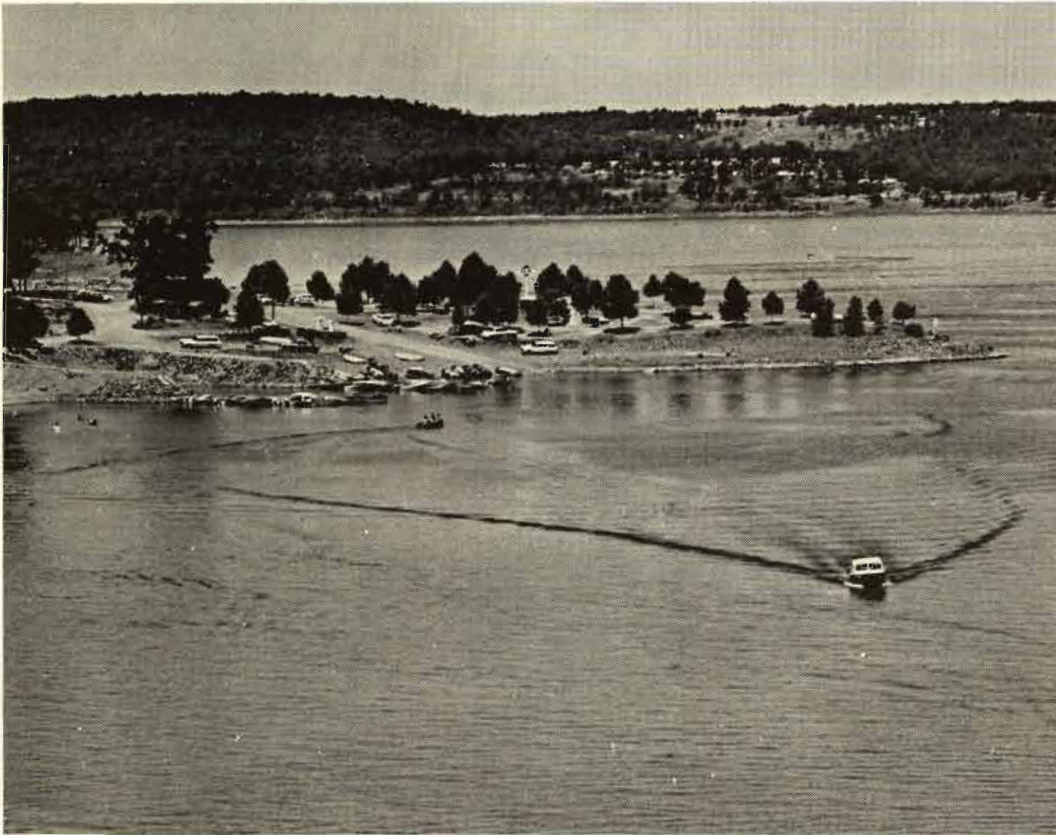
WESTINGHOUSE ELECTRIC SUPPLY CO.
Tulsa, Okla. Phone 918/838-3344

ADAIR COUNTY LIVESTOCK AUCTION, INC.
J.C. Morris—Wayne Hampton

CARTER GLASS CO.
Ph. 774-3913—Free Estimates

IGA WAREHOUSE MARKET
Dale & Mary Rowan

NORTHSIDE GROCERY
Ray and Eunice Plank



Lake Tenkiller is minutes away from Stilwell

Vacationers' paradise

Lake Tenkiller, located just a few minutes' drive west of Stilwell, is a family lake...a vacationer's place.

Many Oklahomans consider Lake Tenkiller the state's prettiest lake. The clear blue of the lake can't be matched by the waters of any other state reservoir...and the hills are steep, rugged, and tree-covered.

Every inch of shore is publicly owned, and so the boater is free to go and land where he wishes. Unsightly developments don't

clutter the natural beauty of the area; concession holders must conform to strict standards.

Lake Tenkiller is just one of many attractions in this area...so come to the "Green Country" and enjoy spectacular vistas at every turn. Valleys, tree-covered mountains, unlimited water fun.

Come, enjoy it all—the best of Oklahoma, crowded with color, and a wide variety of things to see and do.

**This page made possible through the
contributions of the following:**

OKLAHOMA ALLIED TELEPHONE CO.
Send Best Wishes by Long Distance



Foremost Ice Cream

is being furnished for the

31st Annual Strawberry Festival

through courtesy of

JAY'S LUNCH BOX
SIS ROBERTSON'S CAFE
WORSHAM'S GROCERY
JOLLY CHEF CAFE
JACK'S FOOD CITY
SPEEDY MART GROCERY
STILWELL CAFE
STILWELL MEMORIAL HOSPITAL
CHAFFIN REXALL DRUG
STILWELL GROCERY
IGA WAREHOUSE MARKET
CHUB'S COUNTRY STORE
JIM'S PANTRY
G&P GROCERY
VARNELL'S QUIK PICK
CARL'S CORNER STORE
REASOR'S DISCOUNT FOODS
SHORT STOP GROCERY

NORTHSIDE DRIVE INN
ENGLAND HOLLOW GROCERY
McGOWEN'S COUNTRY STORE
BARON GROCERY
DUNN'S MARKET
TOWN TALK FOOD
LUNCH BOX CAFE
SLOAN'S DAIRY BAR
WHITLEY'S DRIVE INN
SPADE MOUNTAIN GROCERY
S&F FOODS
A&R GROCERY
STILWELL FOODS
CIRCLE INN RESTAURANT
LEE'S CITGO
CHRISTIE GROCERY
CRAIG GROCERY
PROCTOR GROCERY

Schools serving Foremost include:

MARYETTA SCHOOL
WESTVILLE SCHOOL
PEAVINE SCHOOL

CHRISTIE SCHOOL
ZION SCHOOL
STILWELL SCHOOL