

30th Annual
Strawberry Festival

May 14, 1977

Stillwell, Oklahoma



Queen

Tammy Smothers



TOMBSTONE of Ned Christie, the Cherokee who was shot and killed by U.S. marshals in 1892 west of Stilwell, is examined by Mack Starr, left, president of the Adair County Cherokee Historical Society, and Mike Jones. Christie's grave is located at Wauhilla. Christie was killed after officers set fire to his log fort. A writer has claimed Christie dealt the U.S. marshals more misery than any other outlaw in pre-statehood days and is said to have fought more battles with government officers than any other outlaw in the history of Judge Parker's court at Fort Smith, Ark.

About the cover

Official photograph of Miss Tammy Smothers who will be crowned queen of the 30th annual Strawberry Festival on May 14.

The cover was made possible through the contribution of Stilwell Foods, Inc.

This page made possible through the
contributions of the following:

Chemco Products, Inc.
Tulsa, Oklahoma

Ekco Products, Inc.
Dallas, Texas

Afco Metals, Inc.
3115 S. Zero St., Ft. Smith, Ark.

W

The Stilwell Kiwanis Club
like to take this opportunity
welcome you and your family
30th annual Strawberry Festival.

We hope you have a good time
enjoying the parade, street
auction, band stand entertainment,
Roundup Club Rodeo, Vespeneon,
and the many other attractions
of this Festival.

Our feature speaker at the
luncheon will be Gov. David
whom we are proud to have.

Kiwanis Club officers

Larry Strauss
President

Tommy Todd
Vice President

Jack Perry
Past Lieutenant-Governor

E.R. Kirkbride
Past President

Larry Eubanks
Secretary-Treasurer

Joe H. Carson
Past Lieutenant-Governor

This page
con

EAGLE THEATRE
Bargain Entertainment

BALLENTINE PRODUCE,
Alma, Arkansas

CARNATION CO., CAN DIV
Mt. Vernon, Missouri

Welcome!

The Stilwell Kiwanis Club would like to take this opportunity to welcome you and your family to the 30th annual Strawberry Festival.

We hope you have a great time enjoying the parade, strawberry auction, band stand entertainment, Roundup Club Rodeo, VIP luncheon, and the many other great attractions of this Festival Day.

Our feature speaker at the VIP luncheon will be Gov. David Boren, whom we are proud to have joining

us again.

The Stilwell Kiwanis Club has spent a great amount of time and effort in trying to make this a most enjoyable time for you, and on behalf of all the residents of Adair County, I would like to welcome you to Stilwell, Oklahoma, in the heart of Green Country. We hope your stay is enjoyable.

Larry Strauss,
President,
Stilwell Kiwanis Club

Kiwanis Club officers

Larry Strauss
President

Tommy Todd
Vice President

Jack Perry
Past Lieutenant-Governor

E.R. Kirkbride
Past President

Larry Eubanks
Secretary-Treasurer

Joe H. Carson
Past Lieutenant-Governor

Kiwanis Club members

Bob Alderson
Robert L. Baker
Joe H. Carson
Joe L. Carson
Charles Cosby
Hershal Dotson
Larry Eubanks
Berry A. Ferguson
Clinton C. Fixin
John Freeman
H.D. Gound
J.L. Hallford
W.O. Hatley
E.R. Kirkbride
Tommy Lamb
Sam Love
Eugene LupPlace
Jerry Means

Neb Miller
Mark Norman
Tobe O'Neal
W.B. Pemberton
Jack Perry
Wally Racker
Larry Roberts
Dale Rowan
C.W. Scott
Jack Smay
Don Smothers
L.T. Spray
Larry Strauss
Claude Todd
Tommy Todd
Marvin Wright Jr.
James Young
Wade Zumwalt

This page made possible through the
contributions of the following:

EAGLE THEATRE
Bargain Entertainment

BALLENTINE PRODUCE, INC.
Alma, Arkansas

CARNATION CO., CAN DIVISION
Mt. Vernon, Missouri

CALVERT-McBRIDE PRINTING CO.
Fort Smith, Arkansas

PRESTON REFRIGERATION CO.
Fort Smith, Arkansas

DIAMOND INTERNATIONAL CORP.
Heekin Can Div., Springdale, Ark.



1977 Strawberry Festival Queen Tammy Smothers and her attendants, Brenda Littlejohn, left, and Connie Campbell.

Queen of the Festival

Miss Tammy Smothers of Stilwell will be crowned queen of the 1977 Strawberry Festival on May 14.

Miss Smothers, 18, a senior at Stilwell High School, was chosen in competition with seven other girls here in March on the basis of talent, beauty, poise, and personality.

The daughter of Mr and Mrs Don Smothers, she was sponsored in the contest by the Stilwell High School Speech Club.

Miss Smothers will succeed Miss DaLana Hudgins, 18, daughter of Mr and Mrs Cliff Hudgins, Stilwell.

The new queen's attendants are: Miss

Brenda Littlejohn, 17, daughter of Mr and Mrs Don Christian and Mr and Mrs Verlin Littlejohn, sponsored by the Adair County Orchard Co.; and Miss Connie Campbell, 18, daughter of Mr and Mrs Millard Campbell, sponsored by the Stilwell Study Club. Chosen as first alternate attendant was Miss Dee Dee Dotson, daughter of Mrs Emma Dotson and James Dotson, sponsored by Larry O'Neal MFA, Inc.

Other contestants were Misses Michelle Martinez, Tonya Richards, Donna Terrell, and Lenora Watie.

This page made possible through the contributions of the following:

AAA ABSTRACT CO., INC.
Nancy Garrett, manager, Stilwell

CAINS COFFEE COMPANY
Hotel & Restaurant Blended Coffee

WESTINGHOUSE ELECTRIC SUPPLY CO.
Tulsa, Okla. Phone 918/838-3344

WONDER BREAD
Fayetteville, Arkansas

HOLBIRD INDUSTRIES
Building Materials, Trusses & Prefabs

NATIONAL STEEL SERVICE CENTER
Tulsa, Okla. 918/582-5291

Music—Johnny Marlin-Dallas Unger
Parade
National Anthem
Invocation
Salute to the Flag
Welcome and Introduction of Guest
Larry Str
Crowning of Strawberry Festival Q
Remarks
Gov
Principal C
Music—The Waysiders
Cherokee Swingers
Music—George Mack Johnson & Th
Awards to Champion Strawberry G
Strawberry Auction
Free Servings of Strawberries and L
Rodeo, Thursday, Friday and Satur
Spon

This p
co

Br
Fort

A Pe

Jin
S

Program for May 14, 1977

Neil Morton, Master of Ceremonies

Music—Johnny Marlin-Dallas Unger & The Waysiders	9:00 a.m.
Parade	10:00 a.m.
Tom Todd, Parade Marshal	
National Anthem	11:00 a.m.
Invocation	11:05 a.m.
Salute to the Flag	11:10 a.m.
Cub Scouts of America	
Welcome and Introduction of Guests	11:15 a.m.
Larry Strauss, President, Stilwell Kiwanis Club	
Crowning of Strawberry Festival Queen for 1977	11:20 a.m.
Remarks	11:30 a.m.
Governor David Boren of Oklahoma	
Principal Chief Ross Swimmer of Cherokee Nation	
Music—The Waysiders	11:40 a.m.
Cherokee Swingers	12:00 a.m.
Music—George Mack Johnson & The Wild Bunch	12:30 p.m.
Awards to Champion Strawberry Growers	2:00 p.m.
Strawberry Auction	2:30 p.m.
Free Servings of Strawberries and Ice Cream	3:00 p.m.
Rodeo, Thursday, Friday and Saturday, May 12, 13 and 14	8:30 p.m.
Sponsored by Stilwell Roundup Club	

**This page made possible through the
contributions of the following:**

**Bruce-Rogers Company
Fort Smith—Rogers, Ark.**

**Foremost Milk
A Perfectly Balanced Milk**

**Jim Hopkins Ford, Inc.
Stilwell, Oklahoma**



BETWEEN 23,000 and 25,000 persons swarmed on Stilwell for the 1976 edition of the Strawberry Festival. The 80-minute parade included 16 bands, colorful floats, 344 horses, 32 ponies, 20 mules, and one tiger. Stilwell Foods, Inc., had the top commercial float which featured a huge Bicentennial cake. The Vocational-Technical School's entry was No. 1 in the non-commercial category. Other winners: Commercial—2nd, Bank of Commerce; and 3rd, Piggly-Wiggly (now Jack's Food City.) Non-commercial—2nd, Adair County 4-H; and 3rd, Pentecostal Holiness Church.

This page made possible through the contributions of the following:

STILWELL CAFE
Welcome, Visitors

ARKHOLA SAND & GRAVEL CO.
Grade A Blocks—Fort Smith, Ark. & Muskogee

DEJARNATT BROTHERS
Ben & Jim—Dirt Contractors

STILWELL READY MIX
U.S. 59 North

REASOR'S DISCOUNT FOODS
"We Sell for Less"

ROCK'S IRON & METAL CO.
"Slim," James and Jane

CLOWNS and Walt Disney characters, right, spiced up the parade. Below, are members of the Bedouin mounted patrol from Muskogee, dressed in Indian regalia. The parade also included the Muldrow gunfighters who gave the crowd a thrill every half block or so by staging another gunfight with the good guys winning every time.



MAYTAG AUTOMATIC LAUNDRY
Gene and Eula Cranford

SCRUGGS
Radio and Television

PEGGY'S FLOWERS
"Flowers for all Occasions"

STILWELL TRUCK SERVICE
Truck repairing and parts

CHUB'S COUNTRY STORE
323 S. 2nd St., Stilwell

CLOWNS and Walt Disney characters, right, spiced up the parade. Below, are members of the Bedouin mounted patrol from Muskogee, dressed in Indian regalia. The parade also included the Muldrow gunfighters who gave the crowd a thrill every half block or so by staging another gunfight with the good guys winning every time.



**This page made possible through the
contributions of the following:**

MAYTAG AUTOMATIC LAUNDRY
Gene and Eula Cranford

SCRUGGS
Radio and Television

PEGGY'S FLOWERS
"Flowers for all Occasions"

STILWELL TRUCK SERVICE
Truck repairing and parts

CHUB'S COUNTRY STORE
323 S. 2nd St., Stilwell

WESTERN AUTO
Jack and Joy Smay

FEEDER'S SUPPLY
Marion and Loreen Blackburn

B-C GENERATOR
& Starter Rebuilder

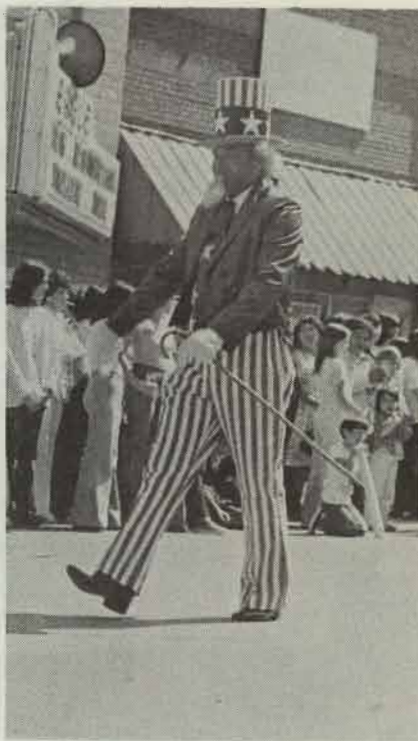
DOSS STILWELL
Grocery & Market

BRUNER'S AUTO & TRACTOR SUPPLY
Also Used Cars

BEN FRANKLIN STORE
Stilwell, Oklahoma



The Plains Indian dancers performed in the parade and, later, on the band stand.



Uncle Sam in parade



Part of the parade crowd in 1976.

This page made possible through the contributions of the following:

REX'S HOUSE
of BARGAINS

STILWELL APPLIANCE
RCA, Kelvinator Dealer

THOMAS CLEAN CLEANERS
You-All Come to See Us

IGA WAREHOUSE MARKET
Dale & Mary Rowan

THE JACK RIDERS
Welcome, Visitors

INDUSTRIAL UNIFORM & TOWEL SUPPLY, INC.
"Uniforms that Advertise"

QUEEN OF THE 1976 FES
DaLana Hudgins, left, and at
Merriott, 1975 Queen Karen
attendant Brenda Littlejohn and
Oklahoma Gov David Boren
Kiwanis Gov Earl Walker. The
crowned by Walker on the
following the parade. At right
gets a kiss from Walker.

This
co

Greer's

Jon
Sp

Conta
Corrugate



QUEEN OF THE 1976 FESTIVAL, Miss DaLana Hudgins, left, and attendant Judy Merriott, 1975 Queen Karen Baublitt, and attendant Brenda Littlejohn are flanked by Oklahoma Gov David Boren, left, and Kiwanis Gov Earl Walker. The queen was crowned by Walker on the band stand following the parade. At right, the queen gets a kiss from Walker.



This page made possible through the
contributions of the following:

Greer's Ranch House Sausage
Pryor, Oklahoma

Jones Truck Lines, Inc.
Springdale, Arkansas

Container Corp. of America
Corrugated Containers—Muskogee



CHAMPIONSHIP BERRIES purchased for \$675 at the auction at the 1976 Festival by Jimmy Leake, left, owner of a Tulsa television station, were grown by Johnny Auffet, right. Auffet also received a \$25 cash award from the Stilwell Kiwanis Club for his Atlas variety championship berries. Second was Homer Hignite; third, Leonard Baird; fourth, John Bennett; and fifth, Hooper and Son. Twelve exhibitors in all entered the berry judging. Their berries sold for a record \$2,600 at the auction. The cheapest crate brought a record \$60.

This page made possible through the
contributions of the following:

Wal-Mart Discount City, Stilwell
We really do sell for less

VIP Sales Company
4673 S. 83rd East Ave., Tulsa, Ok. 74145



WIDE VARIETY of entertainment presented from the band stand at Festival. At top, the crowd listens to a country western singer. At Charlie Scott, minister of the First Church, shows the form that won him in the pie-eating contest.

This
c

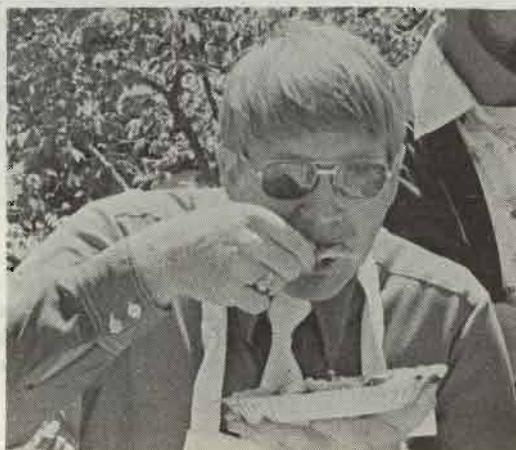
GREEN COUNTRY
Mobile Home Sales

ARKANSAS OFFICE EQUIPMENT
Fort Smith, Arkansas

SCHMIEDING PRODUCE CO.
Springdale, Arkansas



WIDE VARIETY of entertainment was presented from the band stand at the 1976 Festival. At top, the crowd listens intently to a country western singer. At right, Mr Charlie Scott, minister of the First Christian Church, shows the form that won a prize for him in the pie-eating contest.



This page made possible through the contributions of the following:

GREEN COUNTRY
Mobile Home Sales

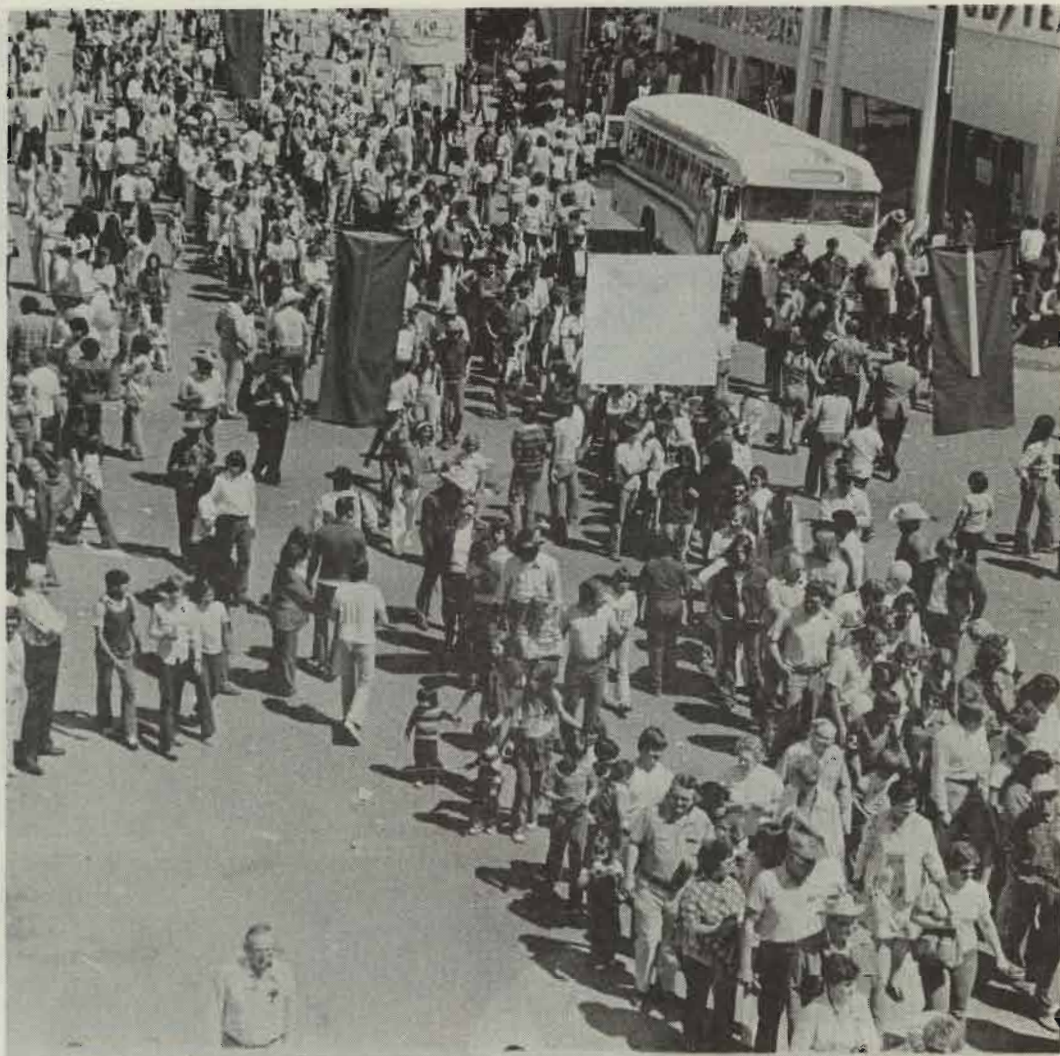
WORSHAM TRACTOR
Everything for the farm

ARKANSAS OFFICE EQUIPMENT CO.
Fort Smith, Arkansas

KEYSTONE SEED CO.
Hollister, Calif.—Veget. Seed Growers

SCHMIEDING PRODUCE CO., INC.
Springdale, Arkansas

ALLIED BEARINGS SUPPLY CO.
Tulsa—Muskogee



THOUSANDS lined up for free servings of strawberries and ice cream following the strawberry auction. E.R. Kirkbride, president of the Stilwell Kiwanis Club in 1976, said probably a record number of persons received free desserts. The serving lines opened at 3 p.m. and didn't close until nearly 5 p.m. Waiting was never much of a problem since the long lines moved quickly and orderly.

This page made possible through the contributions of the following:

BERT'S 66 SERVICE STATION
Stilwell, Oklahoma

STOCKMAN'S SUPPLY
Feed—Seed—Fertilizer & Vet. Supplies

FELTS FAMILY SHOE STORE
Foot Wear for the Family

CREPACO, INC.
Food Equip. & Refrig.—Riverside, Mo.

STILWELL LUMBER CO.
Ph. 774-7058—Building Supplies

WHITE DAIRY, INC.
Fort Smith, Arkansas

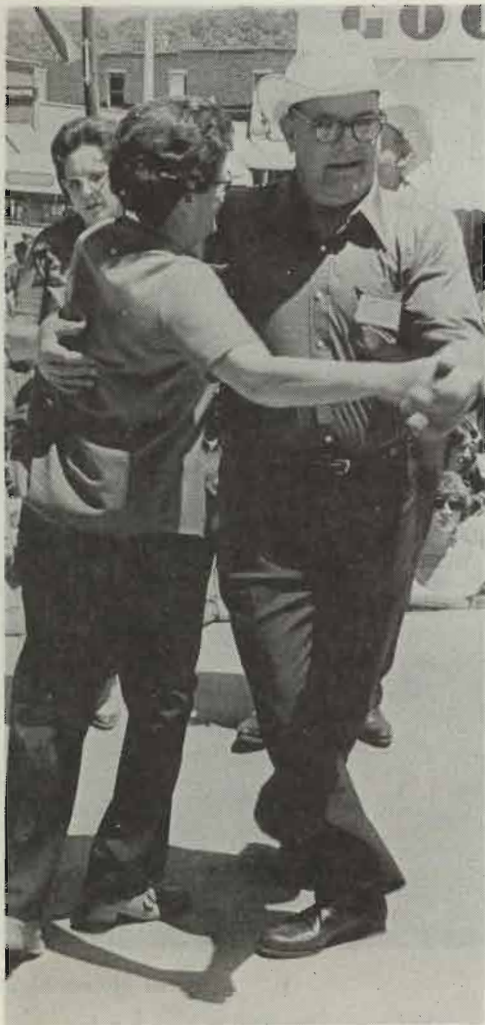


SQUARE DANCING was a feature of the 1976 Festival program. It was so popular the Stilwell Kiwanis Club plans a similar exhibit next year. At right are a couple of the young people who enjoyed eating free strawberries and ice cream at the Festival.

This
co

Stilwe
"Alw

Fern



SQUARE DANCING was an added feature of the 1976 Festival program on the band stand. It was so popular that the Kiwanis Club plans a similar exhibition this year. At right are a couple of the youngsters who enjoyed eating free strawberries and ice cream at the Festival.



This page made possible through the
contributions of the following:

Stilwell
Democrat-Journal

Stilwell Chamber of Commerce
"Always Planning for Stilwell's Future"

Ferry-Morse Seed Company
Memphis, Tennessee

New hospital is nearing completion

Stilwell's new \$3.1 million Memorial Hospital, located on SH 100 West, is scheduled for opening on July 1. The gleaming new facility will be an asset which few rural communities in the nation can boast. When in full operation, the new hospital has plans to serve not only the Stilwell area with hospital and physician services, but Westville and other communities in Adair County and western Arkansas.

The new facility will have 34 private rooms and eight semi-private rooms and will accommodate 50 patients. In addition to the hospital, three office suites have been included in the new building and will be available for lease by physicians.

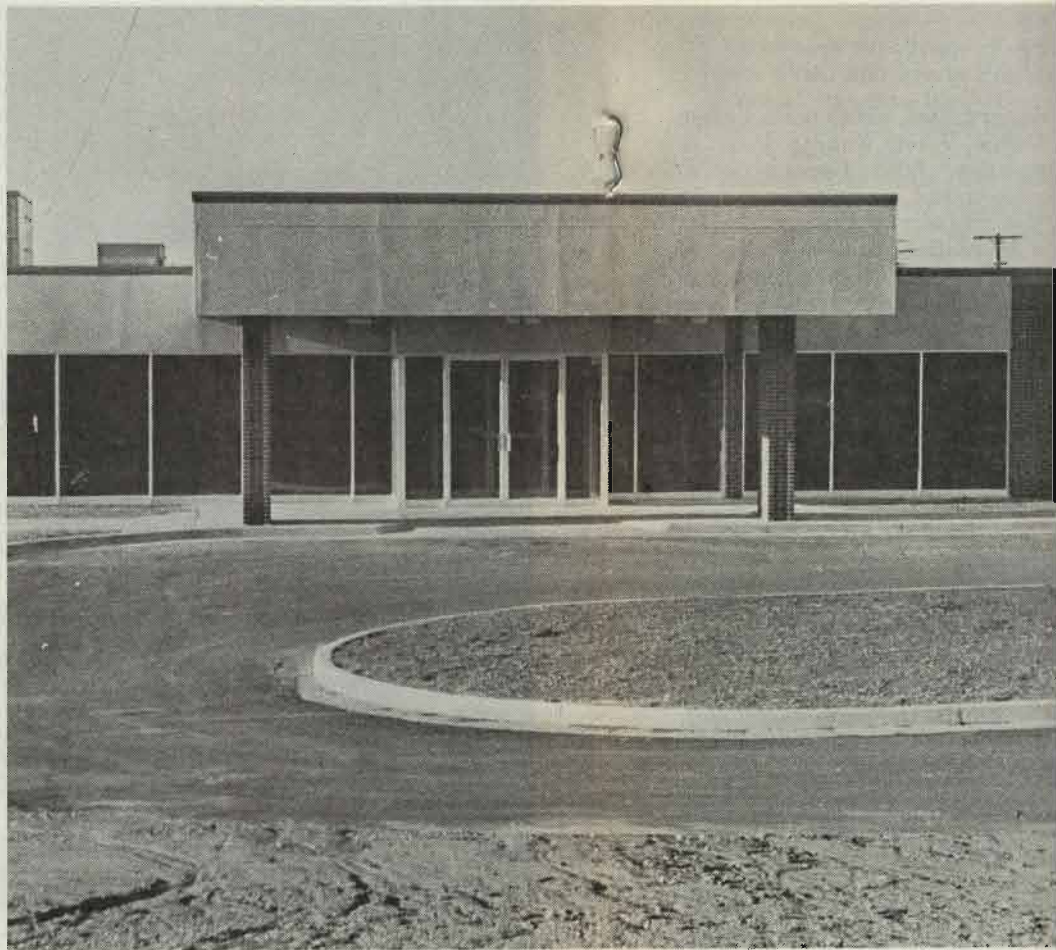
The latest x-ray and medical laboratory diagnostic equipment has been purchased. Over \$100,000 has been spent for x-ray equipment alone.

The emergency department will consist of three well equipped emergency treatment rooms, capable of handling any emergency situation from heart attacks to major accident victims.

The surgery department will feature a surgical suite with two operating rooms which will be equipped to handle most major surgery cases.

The maternity department, including the nursery, the labor, delivery and post-partum rooms, are in a separate section of the hospital.

The all-stainless steel kitchen features the latest equipment designed for convenience and efficiency in the preparation of patient



Stilwell Memorial Hospital is located on SH 100 West

meals.

The laundry equipped with automatic washers and dryers will insure a supply of clean linens for the hospital at all times.

The new hospital will have a snack room just off the attractive waiting area for the convenience of visitors to the hospital.

A.G. Bradford, chairman of the hospital board, said the new hospital building has been financed totally without either city or

county bond issues or tax assessments.

Members of the board of directors of the non-profit corporation which arranged the finance and built the new facility include: A.G. Bradford, president; E. L. Todd, Stilwell; and Mrs. Bessie Henning, Westville, members.

Dr. John H. Carson is the president and general manager of the corporation.

**This page made possible through the
contributions of the following:**

ROBERTS FUNERAL HOME
Serving Adair County Since 1913

INLAND CONTAINER CORP.
Dallas, Tex—214/242-5281

HERMAN JONES
Okla. Farm Bureau Mutual Ins. Co.

D-X AGENCY
Dale Davis and Lester Campbell

RICELAND FOODS
Stuttgart, Arkansas

SCOTT SUPPLY CO. OF ARKANSAS
Springdale, Ark. 501/751-4600

This

F

Fast

Oza
"Co



ital is located on SH 100 West

county bond issues or tax assessments.

Members of the board of directors of the non-profit corporation which arranged for the finance and built the new facility are, in addition to Bradford, Mrs Lucille Hurd, Stilwell, secretary-treasurer; E. Claude Todd, Stilwell; and Mrs Bessie Henderson, Westville, members.

Dr John H. Carson is the president and general manager of the corporation.

Berries on sale near band stand

The public will pay a minimum of \$12 per crate of strawberries on Festival Day in Stilwell. Growers will be selling their berries in the parking lot just west of the Adair County Court House, as in the past.

RESTROOMS AVAILABLE

Portable restrooms for men and women will be set up in the area of the band stand on Strawberry Festival Day in Stilwell. If you can't find one, ask for information from a Kiwanian or a National Guardsman.

SECOND SATURDAY

The Strawberry Festival is held in Stilwell on the second Saturday of May each year.

STILL IN OPERATION

A water wheel, known as Golda's Old Mill, located at Bitting Springs off SH 51 west of Stilwell, is more than 100 years old. The wheel still provides power for grinding corn, just as it did for the Indians and settlers.

FIRST-RATE

This is first-rate travel country, mainly because you'll find Adair County residents friendly and helpful and proud of their picture-book scenery and historical spots.

DEER, ELK, BUFFALO

Deer, elk, and buffalo were the first grazing animals recorded in this area by Washington Irving in his book, "Tour of the Prairie," written in 1822.

**This page made possible through the
contributions of the following:**

**Zero Mountain, Inc.
Fayetteville, Arkansas**

Beacon Drive-In
Fast Food Service—Call in Early 774-3538

Ozarks Electric Cooperative
"Consumer-Owned Utility"

Facts about Stilwell

Population (1970 census)—City, 2,134; Adair County, 15,141. Estimated county population today is 16,500.

Labor force—Male, 2,185; female, 792.

Transportation—Federal Highways 59 and 62; and State Highways 51 and 100. Interstate 40 is 30 miles south. The Kansas City Southern Railroad, six truck lines and a bus line serve the area. Stilwell also has a city airport with runways of 1,600 and 2,000 feet. A new airport is in the planning stage.

Government—Mayor-City Council. Active volunteer fire department with 20 members. Nine city police officers and six county officers. Two Oklahoma Highway Patrolmen are stationed here. Stilwell is also home for a unit of the Oklahoma National Guard.

Organizations—Chamber of Commerce, Stilwell Kiwanis Club, the Cherokee Nation Kiwanis Club, Adair County Cherokee Historical Society, Garden Club, Roundup Club, Study Club, Strawberry Capital Square Dance Club, American Legion, Veterans of Foreign Wars, Masonic Lodge,

Order of Eastern Star, Oddfellows Lodge, Rebekah Lodge, Adair County Quarter Horse Association, Adair County Cattle-men's Association, and seven Adair County Extension Homemakers groups.

Industrial foundation—Stilwell Industrial Foundation, a non-profit organization, was recently revitalized and a 30-acre tract was purchased for prospective industries.

Recreation—Water sports, fishing and picnicking at nearby Lake Tenkiller; small game and deer hunting; Adair Recreation Area, north edge of Stilwell, includes small lake for fishing and swimming, plus picnic and camping facilities, and children's playground; city swimming pool; two gymnasiums; and movie theatre. Four golf courses are located within a 30-mile radius.

The Stilwell Kiwanis Club and the City of Stilwell sponsor baseball and swimming programs for youngsters in this area.

Communications—Independently owned telephone company offers direct distance dialing, touch tone and mobile dial

telephones.

Television reception—Four stations in Tulsa, Okla., and one in Fort Smith.

Special events—Strawberry Festival, Dogwood and fall foliage tours, and Adair County Fair.

Health—The new Stilwell Hospital with 50 beds, is nearing completion and is expected to open about 1975, replacing the present Stilwell Hospital. The Adair County Department Building is located in Stilwell. The city has three medical doctors, one osteopath, two optometrists, one chiropractor. Two ambulance companies operate in Stilwell area.

The Stilwell Nursing Home is



Indian Capital Area Vo-Tech School at Stilwell

This page made possible through the contributions of the following:

C.J. Carson
Insurance Agency

"The Friendly"

Bank of Commerce

International Multifoods
Minneapolis, Minnesota



This
c

LEE'S CITGO
59-51 Highway "Y"

ISAACS' GROCERY & FEED
S.L. and Wilma Isaacs

MARTIN'S AUTO REPAIR
Phone 774-7742—Stilwell

WORSHAM'S CARDINAL
Food Store

STILWELL BUTANE CO.
Sid and Pat

CASH PAWN SHOP
Darryl Lockard

telephones.

Television reception—Four stations in Tulsa, Okla., and one in Fort Smith, Ark.

Special events—Strawberry Festival, Dogwood and fall foliage tours, rodeos and Adair County Fair.

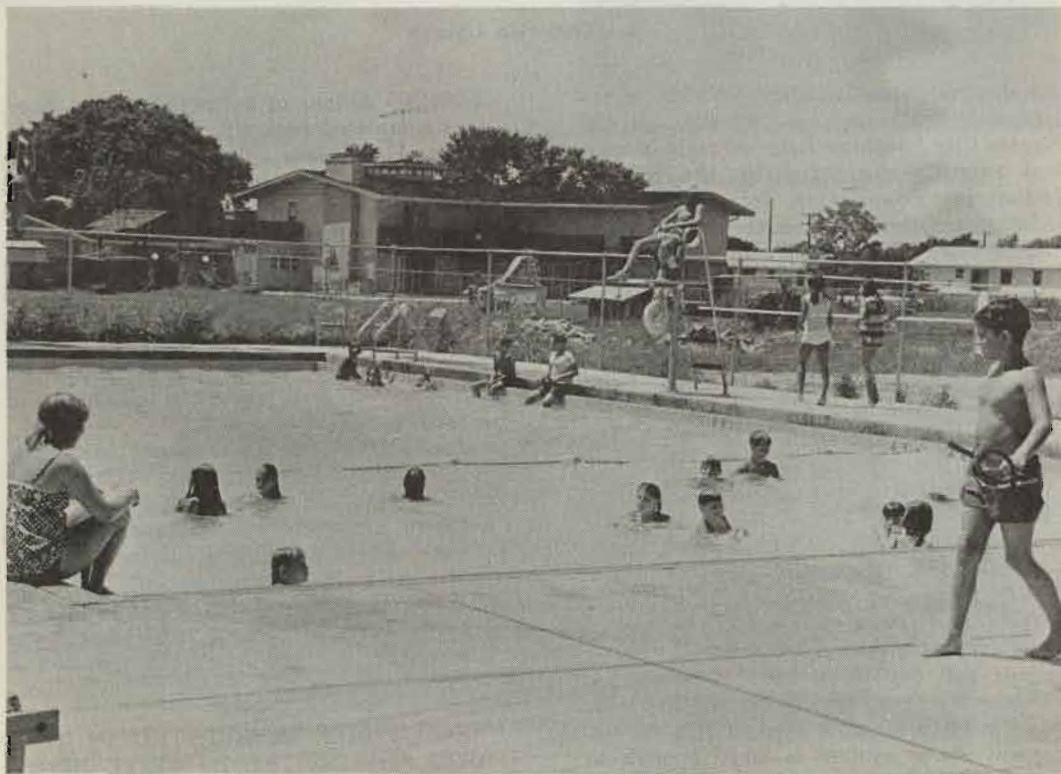
Health—The new Stilwell Memorial Hospital with 50 beds, is nearing completion and is expected to open about July 1, replacing the present Stilwell Municipal Hospital. The Adair County Health Department Building is located in Stilwell. The city has three M.D.'s, an osteopath, two optometrists and a chiropractor. Two ambulance services operate in Stilwell area.

The Stilwell Nursing Home is a modern

facility with 75 beds. An addition is being planned.

Climate—Average winter temperature is 37.4 degrees. Average summer temperature is 82.1. Rainfall averages 42.46 inches per year. Stilwell's elevation above sea level is 1,112 feet.

Education—One elementary school, one junior high and one high school. Adair County Branch, Indian Capital Area Vocational-Technical School, is located at north edge of Stilwell. John Brown University, Siloam Springs, Ark., is 30 miles away; University of Arkansas, Fayetteville, 50 miles; and Northeastern State University, Tahlequah, 25 miles.



Municipal swimming pool

**This page made possible through the
contributions of the following**

LEE'S CITGO
59-51 Highway "Y"

ISAACS' GROCERY & FEED
S.L. and Wilma Isaacs

MARTIN'S AUTO REPAIR
Phone 774-7742—Stilwell

WORSHAM'S CARDINAL
Food Store

STILWELL BUTANE CO.
Sid and Pat

CASH PAWN SHOP
Darryl Lockard

HUNTER'S 5 and 10
Clifton and Christine Hunter

FARMERS PRODUCE AND MILL
Feed—Seed—Fertilizer

ISAACS' CONOCO STATION
Stilwell, Oklahoma

COLLINS FIRESTONE
Tires—Batteries—Appliances

NORTH END FABRIC SHOP
Welcome to Our Festival

SEARS
Alex and Jan James



First Christian Church

Industrial sites available—Thirty acres located 1/4 mile north of city limits on the Kansas City Southern Railroad right-of-way, was recently purchased by the Stilwell Industrial Foundation for prospective industries. Other land on the railroad and one or more highways is also available for industry.

The Cherokee Tribe is developing an industrial park just south of Stilwell on US 59 with the aid of a government grant. One large industry has announced plans to build in the industrial park.

Prevailing wage scale—U.S. minimum wage and hour law prevails.

Major industries—Stilwell Foods, Inc., Cherokee Nation Industries, Inc., Adair County Orchard Co., and Ideal Fruit Farm.

Motels and Restaurants—Three motels with 56 units. Numerous good eating places.

Water and sewer system—Stilwell has an abundance of clean, pure water—4,000,000 gallons per day—from 140-acre city lake. The lake is large enough to serve Stilwell for three years without a drop of rain falling. Present sewer system is large enough to accommodate a city of 10,000. A \$500,000 industrial sewer system, which can handle

2,000,000 gallons of industrial wastes daily, was completed recently.

Electrical power—The City owns its own electrical distribution system, and gets its own power from the Grand River Dam Authority. Special industrial rates are offered. Present capacity of 5,000 KW could easily be enlarged. Ozarks Electric Cooperative serves the rural areas.

Banking—Bank of Commerce has total capital and reserves of \$1,486,269.03 with \$14,892,434.92 in deposits and total assets of \$16,758,575.17.

Indian Industrial Development Assistance—The Bureau of Indian Affairs, in cooperation with Oklahoma employment services agencies, will assist industry in recruitment of qualified applicants to meet personnel staffing requirements.

With the Arkansas River only about 30 miles away, Adair County is looking for an industrial boom now that the Arkansas and Verdigris Rivers are opened to navigation.

INDUSTRIES INTERESTED IN THIS AREA ARE INVITED TO WRITE JERRY PANTER, PRESIDENT OF THE STILWELL CHAMBER OF COMMERCE.

This page made possible through the contributions of the following:

E.G. and Ella Mae Carroll

H.D. and Bonnie Gound

Wade and Mabel Zumwalt

Glen and Roxie Robbins

Hershal and Penny Dotson

Berry and Bobbie Lou Ferguson

Tom and Vahla Todd

Mr and Mrs E.R. Kirkbride

Otto and Frances Alderson

Levi and Christine Carlile

Bob and Mae Baker

L.T. and Evana Spray

James O. Young

Lucille Hurd

Jerry and Mary White

Jean McConnell & Dorothy Reed

Dr and Mrs Jimmie Taylor

Kenneth and Johnnie Rains

Gene and Sue LupPlace

DIFFERENT DIRECTION

Creeks in the Stilwell area flow in different directions, which way.

Lee's Creek flows south; Evansville Creek, north; Caney Creek, northwest; and Sallisaw Creek, southwest.

Among other little known distinctions, Stilwell is the highest elevation of any city in Adair County, east of Oklahoma City. The highest elevation of any Oklahoma city is the Kansas City Southern Railway.



This page made possible through the contributions of the following:

Leon and Sp...

Ma...

DIFFERENT DIRECTIONS

Creeks in the Stilwell area flow every which way.

Lee's Creek flows south and east; Evansville Creek, north; Caney Creek, northwest; and Sallisaw Creek, southwest.

Among other little known distinctions for Stilwell: highest elevation of any Oklahoma county seat east of Oklahoma City; and highest elevation of any Oklahoma town on the Kansas City Southern Railway.



Dogwood blooms are plentiful



Stilwell fire station

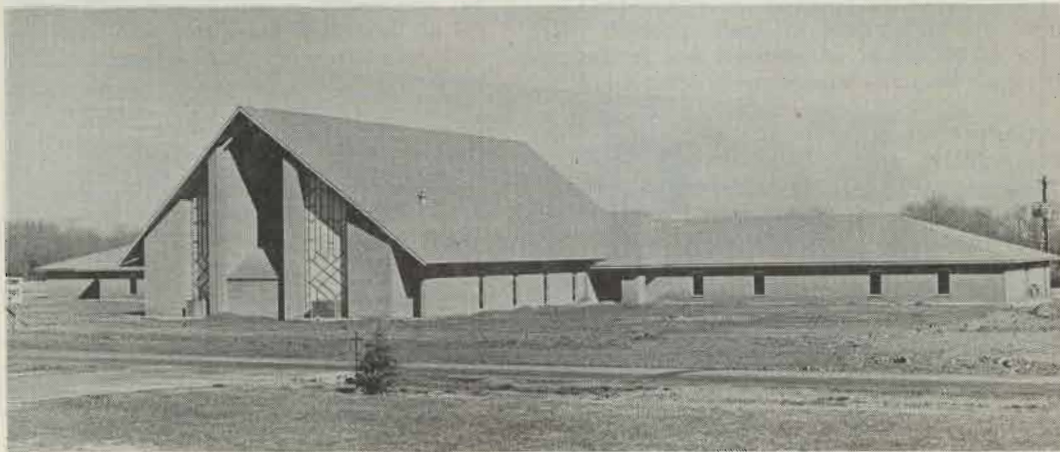
**This page made possible through the
contributions of the following:**

**Leon C. Osborn Co., Inc.
Springdale, Arkansas**

**Rexall Pharmacy
Make This Your Hdqs.**



Stilwell State Park is popular spot



First Baptist Church

**This page made possible through the
contributions of the following:**

LLOYD BREWER CITY FILLING STAT.
"45 Years Continuous Service"

JAN & TIM'S CIRCLE INN & RESTAURANT
774-7022 - Downtown Stilwell

JOLLY CHEF RESTAURANT & BAKERY
Next to Jack's Food City

STARR'S DRIVE-IN
Addie and Sam D. Starr

BLACKARD REAL ESTATE
Ph. 774-2990 - Stilwell

STILWELL FLOWER SHOP
Flowers for all occasions

LEE'S APCO
Welcome to Our City

CAVINESS SERVICE STATION
"Your Business Appreciated"

HOLIDAY MOTEL
Stilwell

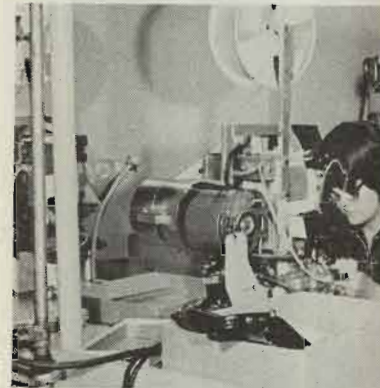
L.R. WEBB, 774-2854, 774-7327
Order Buyer, Stocker & Feeder Cattle

STILWELL FFA CHAPTER
Welcomes You to the Festival

STILWELL AUTO SUPPLY
Lula Mae Hurlbut, Owner



Chero

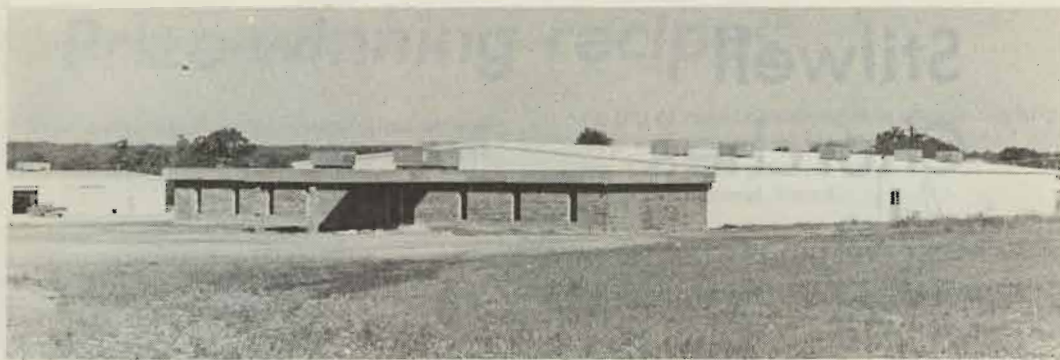


**CHEROKEE
INVOLVED IN
ELECTRONIC**

This p

Cheroke

S



Cherokee Nation Industries, Inc.



**CHEROKEE NATION INDUSTRIES, INC., IS
INVOLVED IN MANUFACTURING AND ASSEMBLING
ELECTRONIC PARTS AND PRODUCTS.**

**This page made possible through the
contribution of:**

Cherokee Nation Industries, Inc.

**Highway 51 West
Stilwell, Oklahoma**

Stilwell Churches

Most religious faiths are represented in the immediate Stilwell area.

Other denominations have churches in communities surrounding Stilwell.

The local churches are:

Assembly of God Church

Central Baptist Church

Church of Christ

First Baptist Church

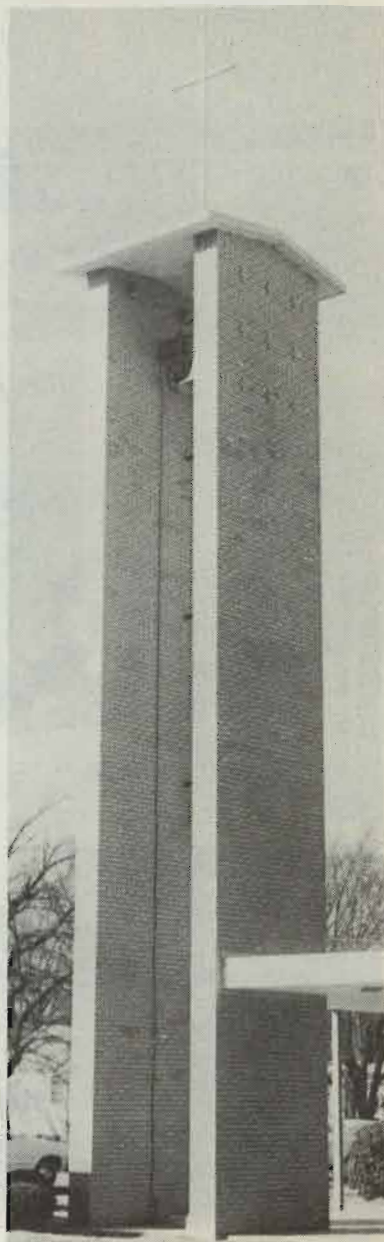
First Christian Church

First United Methodist Church

Free Holiness Church

United Methodist Indian Church

Pentecostal Holiness



This page made possible through the contributions of the following:

MARK AND ANITA NORMAN
OTASCO—Stilwell

MEANS FURNITURE CO.
Jerry & Ann Means

NADINE'S DRY GOODS
Welcome to Our Festival

STILWELL MERCANTILE
Burnell Isaacs, Mgr.

WATERS REAL ESTATE
Our Profession—Not a Sideline

REED'S HARDWARE & FURNITURE
Sarah - Quentin - Gene

Prize-win

First-prize winners in competition at the 1976 Strawberry Festival reveal the recipes that won them their blue ribbon.

STRAWBERRY PRESERVE (Miss Lucille Starr)

Prepare, wash and drain strawberries. Fill quart strawberry box with berries and empty into 5½ quart pan. Add 1 cup sugar-jell and stir until dissolved. Add 1 cup sugar and mix well. Let come to a boil. Time and let boil 6 or 7 minutes. Remove foam. Empty into pyrex dish and freeze day or so before putting into jar, freezer or refrigerator. Will keep indefinitely.

ITALIAN STRAWBERRY TART (Mrs Kathie Potter) (Original)

Crust:

Combine 2 cups flour, 1/8 tsp salt, 1/2 cup powder, 7 tablespoons sugar, 1/2 cup tablespoons shortening and 5 tablespoons margarine until mixture is like coarse crumbs. Add 1 egg combined with 1/2 cup water and 1/2 teaspoon salt. Mix until dough sticks together. Chill several hours. Roll out and fit in 9 inch pan. Flute every 1/2 inch and bake 15 minutes at 375 degrees. Cool.

Cream Filling:

Soften 1 tsp. unflavored gelatin in 2 tablespoons water. Add 2 tablespoons sugar and 3/4 cup confectioners sugar. Add 1 cup ricotta cheese. Whip partially, add gelatin and finish whipping. Put in pan.

Glaze:

Crush enough berries to make 1 cup. Add 1 cup sugar and 3 tablespoons cornstarch. Cook until thick. Do not overcook.

Berries:

Chop enough berries to make 2 cups.

Consolidated
F

Ferry-
M

Prize-winning recipes

First-prize winners in competition at the 1976 Strawberry Festival reveal the recipes that won them their blue ribbons.

STRAWBERRY PRESERVES

(Miss Lucille Starr)

Prepare, wash and drain strawberries. Fill quart strawberry box with berries and empty into 5½ quart pan. Add 1/2 box sure-jell and stir until dissolved. Add 3 cups sugar and mix well. Let come to rolling boil. Time and let boil 6 or 7 minutes. Skim off foam. Empty into pyrex dish and let stand a day or so before putting into jars. Store in freezer or refrigerator. Will keep indefinitely.

ITALIAN STRAWBERRY TART

(Mrs Kathie Potter)

(Original)

Crust:

Combine 2 cups flour, 1/8 tsp. baking powder, 7 tablespoons sugar. Cut in 2 tablespoons shortening and 5 tablespoons margarine until mixture is like coarse bread crumbs. Add 1 egg combined with one (1) tablespoon water and ½ teaspoon vanilla. Mix until dough sticks together. Chill several hours. Roll out and fit in 9 inch pie pan. Flute every ½ inch and bake 13 to 15 minutes at 375 degrees. Cool.

Cream Filling:

Soften 1 tsp. unflavored gelatin in 2 tablespoons water. Add 2 teaspoons vanilla and 3/4 cup confectioners sugar to 2 cups ricotta cheese. Whip partially, add softened gelatin and finish whipping. Put in pie shell. Glaze:

Crush enough berries to make 1 cup juice. Add 1 cup sugar and 3 tablespoons cornstarch. Cook until thick. Do not cool.

Berries:

Chop enough berries to make 2 cups. Put

on top of ricotta pushing into cheese slightly. Top with pretty, whole berries, pointed end up. Coat with glaze. Chill for several hours.

STRAWBERRY CAKE

(Miss Lucille Starr)

1 white cake mix
1/2 cup water
4 eggs
1 cup Wesson oil
3 tablespoons flour
1 pkg. strawberry jello (3 oz.)
1 cup strawberries (fresh or frozen)

Bring water to boil. Add jello. Let stand. Combine cake mix and Wesson oil. Mix until lumps disappear. Add eggs, then flour. Beat until smooth. Add jello and strawberries. (the berries could be blended)
Grease and flour two 9" x 1½" round layers and bake at 350 degrees about 25 to 30 minutes, or one oblong pan about 35 to 40 minutes.

Frosting: 1 package powdered sugar (16 oz.), 1 stick oleo, 1/3 cup strawberries. Beat until smooth.

STRAWBERRY PIE

(Mrs Floyd Cox, Zion)

1 quart frozen strawberries thawed and drained

Reserve berries to add later.

In sauce pan add:

2 cups drained strawberry juice

1 cup sugar

5 tablespoons cornstarch (rounded)

Cook 3 minutes. Add red food coloring.

Cool. Add strawberries and 3 sliced bananas.

Pour into baked pie shells. Top with whipped cream. Makes two 8-inch pies.

This page made possible through the contributions of the following:

Consolidated Industrial Equip. Co.
Fort Smith, Arkansas

Garrett Chevrolet
and Olds. Co., Inc.

Ferry-Morse Seed Company
Memphis, Tennessee

Agriculture big business

Agriculture is big business here.

In the past 50 years, sale of livestock and livestock products has been the principal source of agriculture income in Adair County.

Adair County products—including strawberries, green beans, apples and peaches—are sold all over the nation. Some are processed locally, while others are shipped fresh.

Stilwell is the home of Stilwell Foods, Inc.,

which has nationwide distribution; the Adair County Orchard Co., which is the largest in this four-state region; and the Ideal Fruit Farm.

Corn, small grain, grain sorghums and improved grasses and legumes for hay are grown mostly as feed for livestock. Timber is regarded as an important cash income.

Several poultry processing plants also flourish in this area.



Cattle graze on lush pasture

MAPS AVAILABLE

Maps showing location of strawberry patches in this area will be available on Strawberry Festival Day.

INFORMATION

An information booth will be established near the band stand on Strawberry Festival Day for the convenience of visitors.



Picking strawberries

VIP LUNCHEON IS MAY 14

The Stilwell Kiwanis Club will sponsor a VIP luncheon at the Stilwell Community Facilities Building at 12 o'clock noon Saturday, May 14.

Oklahoma Governor David Boren will be the principal speaker.

Tickets for the luncheon are being sold for \$5.

Shuttle buses will be used to transport the luncheon guests from the downtown area to the community building.

This page made possible through the contributions of the following:

CATRON'S STORE
Welcome to the Festival

TOM J. CARSON
Insurance Agency

ANDERSON WHOLESALE CO.
Non-Food Dist.—Muskogee, Okla.

THERMAL COLD STORAGE
Tulsa, Oklahoma

LLOYD & PAT COLE
Hi, You-All

COCA-COLA BOTTLING CO.
of Fort Smith, Arkansas



Make Sti

Stilwell will make an ideal head for you while you are visiting

EADS BROS. FURNITURE
Ft. Smith, Arkansas

VARNELL'S QUIK PIC
Open Seven Days a Week

MR. B'S PIZZA
Charles and Debbie Benne



Make Stilwell your Hqs.

Stilwell will make an ideal headquarters for you while you are visiting points of

interest within easy driving distance in all four directions.

This page made possible through the contributions of the following:

EADS BROS. FURNITURE
Ft. Smith, Arkansas

G. & P. STOP & SHOP
Highway 100 West Ph. 774-3692

VARNELL'S QUIK PICK
Open Seven Days a Week

V.E. VANDERHEIDEN AUTOMOTIVE
319 S. 2nd—Wholesale & Retail

MR. B'S PIZZA
Charles and Debbie Bennett

DAIRY BERRY DRIVE-IN
411 S. 2nd St., Stilwell

Festival is 30 years old

Stilwell's Strawberry Festival—which continues to grow each year—celebrates its 30th anniversary on May 14 this year.

The Festival had its beginning in 1948 when the Stilwell Kiwanis Club decided to do something about stimulating interest in one of Adair County's major economic resources—the strawberry.

Norvel Henley, an original member of the Stilwell Kiwanis, recalls the first Festival wasn't much by present day standards.

"It didn't have a parade—but it did have lots of music, a queen contest and speech-making," Henley says.

Hundreds of free portions of strawberries and ice cream were served to all.

The first queen, Pat Reed (now Mrs Bob Leatherwood of Stilwell) was nine years old.

Besides being cute and attractive, contestants in the first years of the Festival were required to be actual strawberry pickers and were sponsored by their employers.

"The contest, on the same day as the Festival, was held on the court house steps," Pat recalls. "There were about 10 contestants. We didn't have to perform—we just sat there and were judged on the basis of applause from the crowd."

As queen, Pat received a \$50 U.S. Savings Bond, a wristwatch, and some new clothes.

Each year, the Festival improves and the crowds keep getting larger. The Festival is now considered one of Eastern Oklahoma's most outstanding annual events.



Early-day Strawberry Festival Parade

This page made possible through the contributions of the following:

PEMBERTON REAL ESTATE
Farms—Ranches—Homes

JOE HEWGLEY, INC., DIST.
Tom's Toasted Peanuts—Rogers, Ark.

FLETCHER'S HARDWARE
Phone 774-7500

LEO BELLER ATHLETIC GOODS CO.
Muskogee, Oklahoma

ADAIR COUNTY LIVESTOCK AUCTION, INC.
J.C. Morris



Water sk

Here's wh

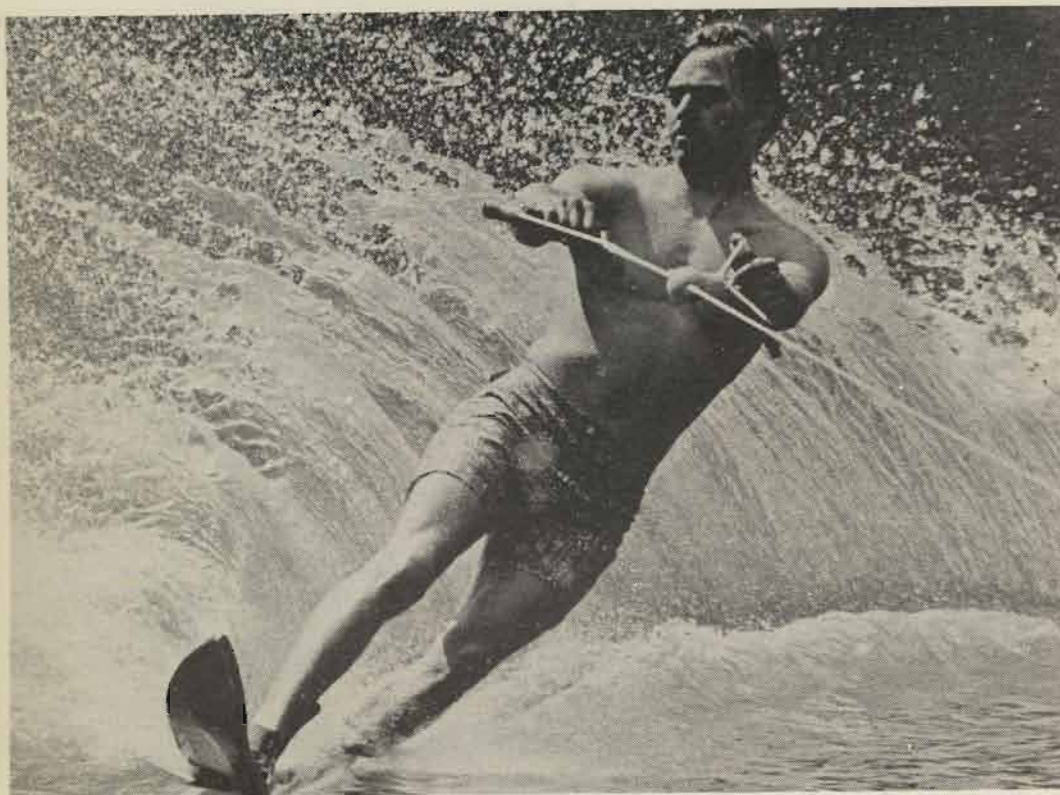
Lake Tenkiller, located just a few drive west of Stilwell, is a family vacationer's place.

Many Oklahomans consider Lake Tenkiller the state's prettiest lake. The blue of the lake can't be matched by the waters of any other state reservoir. The hills are steep, rugged, and tree-covered.

Every inch of shore is publicly owned, so the boater is free to go and land as he wishes. Unsightly development

This
o

Grow



Water skiing is great sport at Lake Tenkiller

Here's where the action is

Lake Tenkiller, located just a few minutes' drive west of Stilwell, is a family lake...a vacationer's place.

Many Oklahomans consider Lake Tenkiller the state's prettiest lake. The clear blue of the lake can't be matched by the waters of any other state reservoir...and the hills are steep, rugged, and tree-covered.

Every inch of shore is publicly owned, and so the boater is free to go and land where he wishes. Unsightly developments don't

clutter the natural beauty of the area; concession holders must conform to strict standards.

Lake Tenkiller is just one of many attractions in this area...so come to the "Green Country" and enjoy spectacular vistas at every turn. Valleys, tree-covered mountains, unlimited water fun.

Come, enjoy it all—the best of Oklahoma, crowded with color, and a wide variety of things to see and do.

**This page made possible through the
contributions of the following:**

Jack's Food City
& Speedy Mart

J.R. Penick, Jr.

Grower, Packer & Shipper Sweet Potatoes

Compliments of
Colonial Bread Co.



Foremost Ice Cream
is being furnished for the
30th Annual Strawberry Festival
through courtesy of

JAY'S LUNCH BOX
SIS ROBERTSON'S CAFE
WORSHAM'S GROCERY
JOLLY CHEF CAFE
JACK'S FOOD CITY
SPEEDY MART
ISAACS GROCERY
SAVE-WAY GROCERY
CONEY SPOT
CHAFFIN REXALL DRUG STORE
STILWELL GROCERY
IGA WAREHOUSE
CHUB'S COUNTRY STORE
DAIRY BERRY
LEATHERWOOD'S GROCERY
QUICK PICK GROCERY
CARL'S DRIVE IN
REASOR'S DISCOUNT FOODS
SHORT STOP GROCERY
McGOWANS COUNTRY STORE
BARON GROCERY
DUNN'S MARKET

TOWN TALK FOODS
LUNCH BOX CAFE
FARMERS MARKET
SLOAN'S DAIRY BAR
WHITELEY'S DRIVE IN
DOYLE'S GROCERY
CRAIG GROCERY
PROCTOR GROCERY
WATTS DISCOUNT
WALDROOP'S GROCERY
WATTS SERVICE
C&W DAIRYETTE
NORTHSIDE GROCERY
NORTHSIDE DRIVE IN
ENGLAND HOLLOW GROCERY
SPADE MOUNTAIN GROCERY
S&F GROCERY
A&R GROCERY
THE HANGOUT
CHALK BLUFF GROCERY
MC'S RESTAURANT

Schools serving Foremost include:

MARYETTA SCHOOL
WESTVILLE HEAD START

ZION SCHOOL
STILWELL HEAD START
CHRISTIE SCHOOL