

29th Annual

Strawberry Festival



May 8, 1976

Stilwell, Oklahoma



Queen DaLana Hudgins

Stilwell history

Once a red haw thicket

Between two low-lying foothills of the Ozarks, lies the greatest little town on earth, Stilwell. These two foothills, worn down by the hand of time, still rock-ribbed and majestic, lie like lion's paws to protect this town with such an interesting history.

Stilwell, of course, was named for Arthur Stilwell, the man who built the Kansas City Southern Railway and served as its president.

Inherits Flair

He had envisioned the railroad line for years after having acquired a flair for railroading from his grandfather, Hamblin Stilwell, who had been one of the founders of the New York Central, as well as a builder of the Erie Canal.

The hill east of town (where the cross stands) is known as the Davis Mountain, named after the grand old man, Uncle Kenny Davis, who lived in a log cabin on its top for so long. He now lies buried within its shadow east of the mountain. This was a mecca for young people on Sunday afternoon when they could walk from town across the hill to the Davis Cave and spring east of the mountain.

In 1895, when the Kansas City Southern Railway bought a right-of-way from Mrs. Martha Johnson and Mrs. Elizabeth Freeman, the present site of Stilwell was a red haw thicket interspersed with persimmon trees. Very soon lots were offered for sale and a town plat laid out.

Street Had Everything

Front Street (which parallels the railroad

tracks) had everything in the early days. The street consisted of a few grocery stores, one or two mercantile stores, a drug store and several restaurants. The residences were within a radius of about a block around the town. The business district later expanded to Division and other streets.

Yes, there were board walks, covered over and supported by posts. The streets were lighted by kerosene lanterns hung on these posts. Between these same posts were boards which were originally intended for hitching racks but were occupied by the town's loafers.

Long Trip

In the early days of Stilwell, a trip by wagon to Evansville, Arkansas—nine miles by highway today—took all day. As means of travel became more modern, one might get to the college at Tahlequah—24 miles now—by spending the day on the road.

A passenger could leave Stilwell at 5 a.m. on the Kansas City Southern, get off in Westville, walk across town to the Frisco depot where he could board a Frisco motor (a one-car train) later in the morning, and get to Tahlequah about the middle of the afternoon.—By Mrs. Lucy Jane Makoske.

TRAVEL COUNTRY

This is first-rate travel country, mainly because you'll find Adair County residents friendly and helpful and proud of their picture-book scenery and historical spots.

About the cover

Official photograph of Miss DaLana Hudgins who will be crowned queen of the 1976 Strawberry Festival in Stil-

well on Saturday, May.

The cover was made possible through the contribution of Stilwell Foods, Inc.

This page made possible through the
contributions of the following:

VIP Sales Company

4673 S. 83rd East Ave., Tulsa, Ok. 74145

Stilwell
Democrat-Journal

Stilwell Chamber of Commerce

"Always Planning for Stilwell's Future"

Welcome to the Festival

The 29th Stilwell Strawberry Festival is a major activity during the Bicentennial year for the Kiwanis Club.

It is our pleasure to welcome you to our Strawberry Festival on May 8. We do hope your stay in Stilwell is most enjoyable.

The Stilwell Kiwanis Club and organizations of our county have spent months in preparing for this major Bicentennial attraction.

I join my fellow Kiwanians and all Adair County residents in welcoming you to the festival.

We sincerely hope our efforts have produced for you a Festival you will long remember.

Come see us anytime.

E.R. Kirkbride
President
Stilwell Kiwanis

Kiwanis Club officers

E.R. Kirkbride
President

Jack Smay
Past President

Joe Lynn Carson
Vice President

Larry Eubanks
Secretary-Treasurer

Joe H. Carson
Past Lieutenant-Governor

W.Neil Morton
Past Lieutenant-Governor

Jack Perry, Lieutenant-Governor

Kiwanis Club members

Bob Alderson
Robert L. Baker
J.D. Briggs
Joe H. Carson
Joe L. Carson
Charles Cosby
Hershal Dotson
Larry Eubanks
Berry Ferguson
John Freeman
H.D. Gound
J.L. Hallford
W.O. Hatley

Johnnie Johnson
E.R. Kirkbride
Tommy Lamb
Sam Love
Charles O. McFarland
Jerry Means
W. Neil Morton
Tobe O'Neal
W.B. Pemberton
Jack Perry
Doug Revard
Larry Roberts
Dale Rowan

C.W. Scott
Jack Smay
Don Smothers
L.T. Spray
Elgin R. Strahm
Larry N. Strauss
Claude Todd
Tom Todd
William F. Todd
Leo Walkingstick
Marvin Wright Jr
Wade Zumwalt

**This page made possible through the
contributions of the following:**

ROCK'S IRON & METAL CO.
Scrap, New and Used Iron

STILWELL APPLIANCE
RCA, Kelvinator Dealer

REX'S HOUSE
of BARGAINS

IGA WAREHOUSE MARKET
Dale & Mary Rowan

THOMAS CLEAN CLEANERS
You-All Come to See Us

THE JACK RIDERS
Welcome, Visitors

GREEN COUNTRY MOTORS
and Mobile Home Sales

Program for May 8, 1976

Neil Morton, Master of Ceremonies

Music—Western Express	9:00 a.m.
Parade	10:00 a.m.
Elgin Strahm, Parade Marshal	
National Anthem	11:00 a.m.
Larry Eubanks	
Invocation	11:05 a.m.
Mr. Charlie Scott, First Christian Church	
Salute to the Flag	11:10 a.m.
Cub Scouts of America	
Welcome and Introduction of Guests	11:15 a.m.
E.R. Kirkbride, President, Stilwell Kiwanis Club	
Crowning of Strawberry Festival Queen for 1976	11:20 a.m.
Remarks	11:30 a.m.
Governor David Boren of Oklahoma	
Principal Chief Ross Swimmer of Cherokee Nation	
Patriotic Music—Stilwell High School Band	11:40 a.m.
Plains Indians Dance Exhibition	12:00 a.m.
Music—Western Express.....	12:25 p.m.
Pie eating contest and awards	1:00 p.m.
Bicentennial dress contest and awards, Beard growing contest and awards, and Strawberry cooking contest and awards	1:15 p.m.
Old time square dancing exhibition, Cherokee Swingers	1:45 p.m.
Awards to Champion Strawberry Growers	2:15 p.m.
Strawberry Auction	2:30 p.m.
Free Servings of Strawberries and Ice Cream	3:00 p.m.
Rodeo, Thursday, Friday and Saturday, May 6, 7 and 8	8:30 p.m.
Sponsored by Stilwell Roundup Club	

This page made possible through the
contributions of the following:

ROBERTS FUNERAL HOME
Serving Adair County Since 1913

HERMAN JONES
Okla. Farm Bureau Mutual Ins. Co.

COCA-COLA BOTTLING CO.
of Fort Smith, Arkansas

ADAIR COUNTY LIVESTOCK AUCTION, INC.
J.C. and Melvin Morris

INLAND CONTAINER CORP.
Dallas, Tex—214/242-5281

D-X AGENCY
Selan Hall, Howard Johnson

RICELAND FOODS
Stuttgart, Arkansas



Ivanna Hembree, left, Queen DaLana Hudgins, Judy Merriott and Brenda Littlejohn

Queen for 1976

Miss DaLana Hudgins, 17, Stilwell High School senior, will be crowned queen of the 1976 Strawberry Festival here Saturday, May 8.

Miss Hudgins, daughter of Mr and Mrs Cliff Hudgins, was chosen in March in competition with 10 other Adair County girls. She was sponsored by Stilwell Foods, Inc.

She will succeed Miss Karen Baublitt, daughter of Mr and Mrs Herbert Baublitt, Route 2 Westville, the 1975 Queen.

Miss Hudgins' attendants are: Miss Brenda Littlejohn, 16, Westville, alternate

queen, daughter of Mrs Betty Christian and Verlin Littlejohn, sponsored by Town and Country Fabrics of Westville; Miss Ivanna Hembree, 17, Stilwell, first runnerup, daughter of Mr and Mrs Ivan Hembree, sponsored by Adair County Fair; and Miss Judy Merriott, 17, second runnerup, daughter of Mr and Mrs Charles Merriott, sponsored by Adair County Orchard.

The Stilwell Community Facilities Building was more than filled for the contest. The five out-of-county judges based their decision on beauty, talent, poise, and personality.

This page made possible through the contributions of the following:

**Ferry-Morse Seed Company
Memphis, Tennessee**

**This Space Paid for By a Good Friend of
Stilwell Merchants**

**Zero Mountain, Inc.
Fayetteville, Arkansas**



Thousands line Festival parade route

Crowds jam Stilwell

Stilwell bulged at the seams as thousands of visitors crowded into town for the 28th annual Strawberry Festival in 1975.

The day, warm and sunny, included country and western music, a 75-minute parade, coronation of the 1975 Strawberry Festival Queen, strawberry judging and auction, serving of free strawberries and ice cream, and brief speeches by several dignitaries, including Gov. David Boren.

The crowd was estimated at slightly more than 20,000—up a few from the 1974 event.

The parade included 29 bands, several

colorful floats, hundreds of beautiful girls, dignitaries, and nearly 300 horses and ponies.

Judges picked the Stilwell Rose Garden Club's float for first prize of \$75; second was the Stilwell Future Farmers of America Chapter, \$50; and third, Cave Springs Singers, \$25.

Trophy winners in the commercial float class of the parade were: 1st, Stilwell Foods, Inc.; 2nd, Bank of Commerce; and, 3rd, Piggly Wiggly.

This page made possible through the contributions of the following:

EKCO PRODUCTS, INC.
Dallas, Tex.

DAY DISCOUNT CO.
Best Place to Trade

SCOTT SUPPLY CO. OF ARKANSAS
Springdale, Ark. 501/751-4600

BURLAN WOODS MEAT PROCESSING
"State Inspected—Custom Processing"

CATRON'S STORE
Welcome to the Festival

ANDERSON WHOLESALE CO.
Non-Food Dist.—Muskogee, Okla.

TOM J. CARSON
Insurance Agency



Stilwell Rose Garden Club's first place float in 1975



Kiwanis dignitaries ride in procession

**This page made possible through the
contributions of the following:**

E.G. and Ella Mae Carroll

H.D. and Bonnie Gound

Mr and Mrs Don Cunningham of Vian

Wade and Mabel Zumwalt

Glen and Roxie Robbins

Hershal and Penny Dotson

Berry and Bobbie Lou Ferguson

Tom and Vahla Todd

Mr and Mrs E.R. Kirkbride

Otto and Frances Alderson

Levi and Christine Carlile

Bob and Mae Baker

L.T. and Evana Spray

James O. Young

Lucille Hurd

Jerry and Mary White

Jean McConnell

Dr and Mrs Jimmie Taylor



Old stagecoach adds an early-day touch



Queen Karen Baublitz



Stilwell Shorty and his trained mule

This page made possible through the
contributions of the following:

Wal-Mart Discount City, Stilwell
We really do sell for less

International Multifoods
Minneapolis, Minnesota

Westinghouse Electric Supply Co.
Tulsa, Okla. Phone 918/838-3344



Ivanna Hembree, Rebecca Matney, Andy Waters and Queen Karen Baublitz

Last year's Queen

Miss Karen Baublitz, Route 2 Westville, reigned as queen of the 1975 Strawberry Festival. She was crowned by Andy Waters, Dallas, Tex., governor of the Texas-Oklahoma District of Kiwanis International.

The queen, daughter of Mr and Mrs Herbert Baublitz, was attended by Miss Rebecca Matney, daughter of Mr and Mrs

Dale Matney, Westville; and Miss Ivanna Hembree, daughter of Mr and Mrs Ivan Hembree, Stilwell.

Twelve girls competed for the title in 1975. Judges from Tahlequah, Muskogee, and Fayetteville, Ark., based their decision on personality, poise and beauty.

**This page made possible through the
contributions of the following:**

SAVE-WAY GROCERY
Buddy—Juanita—Kenny—Bill

ARKANSAS OFFICE EQUIPMENT CO.
Fort Smith, Arkansas

H.C. SCHMIEDING PRODUCE CO., INC.
Springdale, Arkansas

WORSHAM TRACTOR
Everything for the farm

KEYSTONE SEED CO.
Hollister, Calif.—Veget. Seed Growers

ALLIED BEARINGS SUPPLY CO.
Tulsa—Muskogee

BERT'S 66 SERVICE STATION
Stilwell, Oklahoma



Leonard Baird, right, with Claude Todd and Gov. David Boren

Baird is tops again

Leonard Baird, for the second year in a row, won the grand championship award for his crate of Atlas strawberries at the 28th annual Festival.

Baird, who received a cash award and a trophy from the Stilwell Kiwanis Club, sold his winning crate for \$400 to Stilwell Foods, Inc., during the auction that followed the judging.

All berries were judged in a single class.

E.K. Thomas won second prize, and Homer Hignite was third. Both exhibited the Sunrise variety.

Thomas' crate brought \$350 at the auction, and Hignite's sold for \$210, both purchased by Kelley Canning Co. of Prairie Grove, Ark.

**This page made possible through the
contributions of the following:**

Jones Truck Lines, Inc.
Springdale, Arkansas

Compliments of
Colonial Bread Co.

Container Corp. of America
Corrugated Containers—Muskogee



Strawberry growers show off their top berries

Growers get cash at auction

Bidders paid a total of \$1,785 for the 15 crates of strawberries at the auction in 1975.

This averages out to \$112 per crate.

The number of crates in the competition in 1975 was fewer than normal because the crop had been slow in maturing due to cool and cloudy weather.



Jerry Means auctions berries

This page made possible through the contributions of the following:

STILWELL AUTO SUPPLY
Lula Mae Hurlbut, Owner

MAYTAG AUTOMATIC LAUNDRY
Gene and Eula Cranford

SCRUGGS
Radio and Television

PEGGY'S FLOWERS
"Flowers for all Occasions"

STILWELL TRUCK SERVICE
Truck repairing and parts

HOLIDAY MOTEL
Stilwell

WESTERN AUTO
Jack and Joy Smay

L.R. WEBB, 774-2854, 774-7327
Order Buyer, Stocker & Feeder Cattle

FARMERS SUPPLY CO.
Home of the Farmers' Needs

STILWELL FFA CHAPTER
Welcomes You to the Festival

GEORGE'S MARKET
323 S. 2nd, Stilwell

FEEDER'S SUPPLY
Marion and Loreen Blackburn



Lining up for free strawberries and ice cream

Umm—umm—good!



This page made possible through the
contributions of the following:

MC'S RESTAURANT
Don and Linda McMurtry

THERMAL COLD STORAGE
Tulsa, Oklahoma

LLOYD & PAT COLE
Hi, You-All

THE OLD TRADING POST
Antiques and Junque

CHEMCO PRODUCTS, INC.
Tulsa, Oklahoma

FLETCHER'S HARDWARE
Phone 774-7500

PEMBERTON REAL ESTATE
Farms—Ranches—Homes



It's a time for eating strawberries and visiting

This page made possible through the
contributions of the following:

Jim Hopkins Ford, Inc.
Stilwell, Oklahoma

Greer's Ranch House Sausage
Pryor, Oklahoma

Interstate Electric Co.

Motor-Armatures & Transformers rewound —Fort Smith, Ark.



Replica is on original site of court house

This page made possible through the
contributions of the following:

Ozarks Electric Cooperative
"Consumer-Owned Utility"

C.J. Carson
Insurance Agency

"The Friendly"
Bank of Commerce
"Happy Birthday, U.S.A."



Old court house lives again

Only five miles southwest of Stilwell stands a memorial to the Cherokee Indians of the old Flint District, Cherokee Nation.

On this beautiful lonely spot stands a little log court house, symbol of the law-abiding Cherokees. This little log building is a replica of the one erected about 1841 (passed down by word of mouth). The Indians who lived in this part of Flint District soon realized the need for law and order.

On this same spot, laws were made, trials were carried out, and sentences were passed. One man, Samuel Adair Bigby, chief justice of the Flint District Court, lies buried within half a mile of the old court house. Only one man paid for his crime by hanging on the old "hanging tree" at this court house.

The little town of Mayes was built around this court house and carried on business until 1895. Flint Masonic Lodge was organized at Mayes and moved to the west part of the present town of Stilwell. When the town was laid out, the Masonic Lodge moved to a long building across Oak Street south of the old Long-Bell Lumber Company.

The Adair County Cherokee Historical Society sponsored the rebuilding of this old court house in 1971-72. This organization wishes to preserve our heritage for posterity. It is the wish of the people of Stilwell to preserve the site and leave a memorial to mark the spot where the old court house stood.

**This page made possible through the
contributions of the following:**

V.E. VANDERHEIDEN AUTOMOTIVE
319 S. 2nd—Wholesale & Retail

SWIM'S DRIVE-IN
411 S. 2nd St., Stilwell

WATERS REAL ESTATE
Our Profession, Not a Sideline

SHARPE'S DEPARTMENT STORE
Welcome to Adair County

EAGLE THEATRE
Bargain Entertainment

BALLENTINE PRODUCE, INC.
Alma, Arkansas

CARNATION CO., CAN DIVISION
Mt. Vernon, Missouri

CALVERT-McBRIDE PRINTING CO.
Fort Smith, Arkansas

Glamorous recipes

Among the favorite strawberry recipes of Adair County homemakers are the following:

STRAWBERRY FLAN CAKE

(Mrs. Jim Hopkins)

(Basic flan cake shell)
1/2 cup milk
2 tbsp. butter or margarine
2 eggs
1 cup sugar
1/2 tsp. vanilla
1 cup sifted flour
1 tsp. baking powder
1/4 tsp. salt

In saucepan scald milk. Add butter. In large bowl, beat eggs until light yellow in color. Add sugar and vanilla, beating until light and fluffy. Sift together flour, baking powder and salt. Fold into egg mixture with hot milk mixture. Pour batter into greased and floured nordic flan pan. Bake at 350 degrees for 25 minutes or until cake tests done. Cool 5 minutes and turn out on a serving plate. Fill center of cake with sliced strawberries. Top with a whipped topping when served.

STRAWBERRY ICE CREAM

(Mrs. Bob Bailey)

6 eggs
2 cans milnot
1/4 tsp. salt
2 1/2 cups sugar
3 cups strawberries (crushed)
1 T. vanilla

Beat eggs until light color. Add sugar gradually. Add salt, vanilla, and crushed strawberries in blender. Add milnot and beat at low speed until mixed good, then add strawberries.

Makes 1 gallon.

STRAWBERRY PIE

(Mrs Irene Bitting)

1 9-inch pie shell
6 cups fresh medium-size strawberries
1 cup water
3/4 cup sugar
3 tablespoons cornstarch
Red food coloring

Bake and cool pastry. Wash berries; remove hulls. Crush 1 cup of the smaller berries and cook with the water for about 2 minutes. Drain well with sieve; reserve juice. Add water if needed to make 1 1/4 cups juice.

Discard cooked berries. In saucepan combine sugar and cornstarch; stir in berry juice. Cook and stir over medium heat until thickened and clear. Stir in about 5 drops red food coloring. Spread a small amount of the glaze mixture (about 1/4 cup) on bottom and sides of baked pastry shell. Arrange half the whole berries, stem end down, in pastry shell. Spoon half the remaining glaze carefully over berries, being sure each is well coated. Arrange remaining berries, stem end down, on first layer; spoon on remaining glaze, coating each berry. Chill 3 to 4 hours. Garnish with whipped cream.

STRAWBERRY PIE

(Mrs Floyd Cox, Zion)

1 quart frozen strawberries thawed and drained

Reserve berries to add later.

In sauce pan add:

2 cups drained strawberry juice
1 cup sugar
5 tablespoons cornstarch (rounded)

Cook 3 minutes. Add red food coloring. Cool. Add strawberries and 3 sliced bananas. Pour into baked pie shells. Top with whipped cream. Makes two 8-inch pies.

This page made possible through the contributions of the following:

B-C GENERATOR
& Starter Rebuilder

DOSS STILWELL
Grocery and Market

PAT'S GROCERY & STATION
Pat and Lee Pruett

BRUNER'S AUTO & TRACTOR SUPPLY
Also Used Cars

BARBARA'S BEAUTY SHOP
Specializing in Men's Hair Styling

BEN FRANKLIN STORE
Stilwell, Oklahoma

ISAACS' GROCERY & FEED
S.L. and Wilma Isaacs

MARTIN'S AUTO REPAIR
Phone 774-7742—Stilwell

WORSHAM'S CARDINAL
Food Store

WINGFIELD'S
Hardware & Variety

CASH FEED STORE
Darryl Lockard

STILWELL BUTANE CO.
Sid and Pat

Facts ab

Population (1970 census)
Adair County, 15,141. Estimated population today is 16,500.

Labor force—Male, 2,185
Transportation—Federal Highway 62; and State Highway Interstate 40 is 30 miles south of City Southern Railroad, six bus lines serve the area. State city airport with runways 6,000 feet. A new airport is in the planning stages.

Government—Mayor—City



Bruce-Rogers
Fort Smith—R

Facts about Stilwell

Population (1970 census)—City, 2,134; Adair County, 15,141. Estimated county population today is 16,500.

Labor force—Male, 2,185; female, 792.

Transportation—Federal Highways 59 and 62; and State Highways 51 and 100. Interstate 40 is 30 miles south. The Kansas City Southern Railroad, six truck lines and a bus line serve the area. Stilwell also has a city airport with runways of 1,600 and 2,000 feet. A new airport is in the planning stage.

Government—Mayor-City Council. Active

volunteer fire department with 20 members. Nine city police officers and six county officers. Two Oklahoma Highway Patrolmen are stationed here.

Organizations—Chamber of Commerce, Kiwanis, Garden Club, Roundup Club, Stilwell Study Club, Strawberry Capital Square Dance Club, American Legion, Veterans of Foreign Wars, Masonic Lodge, Order of Eastern Star, Oddfellows Lodge, Rebekah Lodge, Adair County Quarter Horse Association, Adair County Cattle-



Stilwell is a thriving, growing community

**This page made possible through the
contributions of the following:**

**Bruce-Rogers Company
Fort Smith—Rogers, Ark.**

**Foremost Milk
A Perfectly Balanced Milk**

**T&H Starr Valley Angus Farms
Canadian & Emulous Sires. Thornton & Harris**



Ground is broken for new Stilwell Memorial Hospital

men's Association, and seven Adair County Extension Homemakers groups.

Industrial foundation—Stilwell Industrial Foundation, a non-profit organization, was recently revitalized and a 30-acre tract was purchased for prospective industries.

Recreation—Water sports, fishing and picnicking at nearby Lake Tenkiller; small game and deer hunting; Adair Recreation Area, north edge of Stilwell, includes small lake for fishing and swimming, plus picnic and camping facilities, and children's playground; city swimming pool; two gymnasiums; and movie theatre. Four golf courses are located within a 30-mile radius.

The Stilwell Kiwanis Club and the City of

Stilwell sponsor baseball and swimming programs for youngsters in this area.

Communications—Independently owned telephone company offers direct distance dialing, touch tone and mobile dial telephones.

Television reception—Three stations in Tulsa, Okla., and one in Fort Smith, Ark.

Special events—Strawberry Festival, Dogwood and fall foliage tours, rodeos and Adair County Fair.

Health—Thirty-six bed Stilwell Municipal Hospital, and Adair County Health Building. The new Stilwell Memorial Hospital with 50 beds, to be completed in one year, will replace the municipal hospital. The city has

one dentist, four M.D.'s, and optometrists and a chiropractor. Ambulance services operate.

The Stilwell Nursing Home is a facility with 75 beds.

Climate—Average winter temperature is 37.4 degrees. Average summer temperature is 82.1. Rainfall averages 48 inches a year. Stilwell's elevation above sea level is 1,112 feet.

Education—One elementary school, one junior high and one high school. Adair County Branch, Indian Vocational-Technical School is located on the north edge of Stilwell. Arkansas State University, Siloam Springs, is 15 miles away; University of Arkansas, Fayetteville, is 50 miles; and North Arkansas State University, Tahlequah, is 25 miles.

Industrial sites available—Several sites are located 1/4 mile north of city. One site, formerly Kansas City Southern Railroad, was recently purchased by the Stilwell Industrial Foundation for light industries. Other land on the north side of one or more highways is available for industry.

The Cherokee Tribe is planning an industrial park just south of Stilwell, Mo. 59 with the aid of a govern-



This page made possible through the contributions of the following:

FELTS FAMILY SHOE STORE
Foot Wear for the Family

JAN & TIM'S CIRCLE INN MOTEL
774-7022—Downtown Stilwell

TANKERSLEY BROS. PACKING CO.
Fort Smith, Arkansas

STOCKMAN'S SUPPLY
Feed—Seed—Fertilizer Supplies

CREPACO, INC.
Food Equip. & Refrig.—Riverside, Mo.

STILWELL LUMBER CO.
Ph. 774-7058—Building Supplies

LLOYD BREWER CITY FILLING STAT.
"44 Years Continuous Service"

Colborne Manufacturing Co.
Food Machinery—Glenview, Ill.

Cor

one dentist, four M.D.'s, an osteopath, two optometrists and a chiropractor. Two ambulance services operate in Stilwell area.

The Stilwell Nursing Home is a modern facility with 75 beds.

Climate—Average winter temperature is 37.4 degrees. Average summer temperature is 82.1. Rainfall averages 42.46 inches per year. Stilwell's elevation above sea level is 1,112 feet.

Education—One elementary school, one junior high and one high school. Adair County Branch, Indian Capital Area Vocational-Technical School, is located at north edge of Stilwell. John Brown University, Siloam Springs, Ark., is 30 miles away; University of Arkansas, Fayetteville, 50 miles; and Northeastern State University, Tahlequah, 25 miles.

Industrial sites available—Thirty acres, located 1/4 mile north of city limits on the Kansas City Southern Railroad right-of-way, was recently purchased by the Stilwell Industrial Foundation for prospective industries. Other land on the railroad and one or more highways is also available for industry.

The Cherokee Tribe is developing an industrial park just south of Stilwell on US 59 with the aid of a government grant.

Prevailing wage scale—U.S. minimum wage and hour law prevails.

Major industries—Stilwell Foods, Inc., Cherokee Nation Industries, Inc., Adair County Orchard Co., and Ideal Fruit Farm.

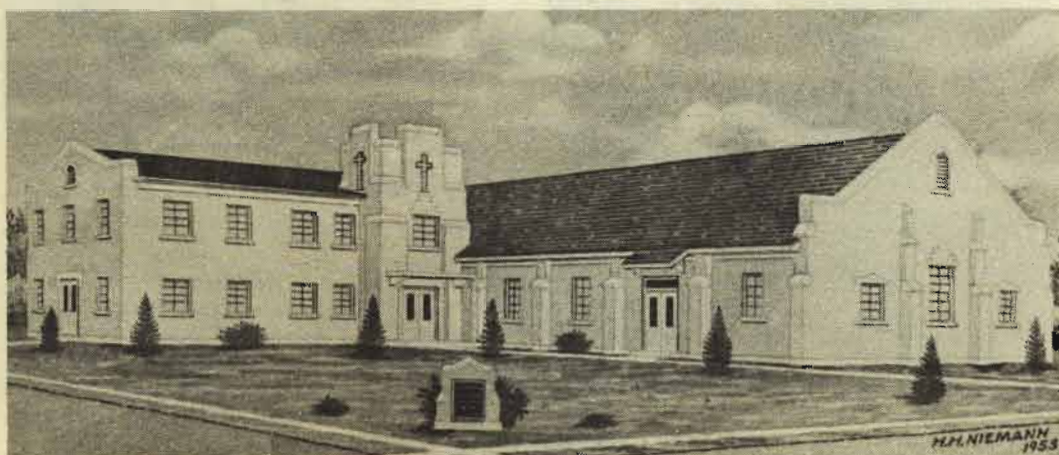
Motels and Restaurants—Three motels with 56 units. Numerous good eating places.

Water and sewer system—Stilwell has an abundance of clean, pure water—4,000,000 gallons per day—from 140-acre city lake. The lake is large enough to serve Stilwell for three years without a drop of rain falling. Present sewer system is large enough to accommodate a city of 10,000. A \$500,000 industrial sewer system, which can handle 2,000,000 gallons of industrial wastes daily, was completed recently.

Electrical power—The City owns its own electrical distribution system, and gets its own power from the Grand River Dam Authority. Special industrial rates are offered. Present capacity of 5,000 KW could easily be enlarged. Ozarks Electric Cooperative serves the rural areas.

Banking—Bank of Commerce has total capital and reserves of \$1,554,258.94 with \$11,469,358.81 in deposits and total assets of \$13,027,617.75.

Indian Industrial Development Assistance—The Bureau of Indian Affairs, in



First Christian Church of Stilwell

This page made possible through the contributions of the following:

Colborne Manufacturing Co.

Food Machinery-Glenview, Ill. 312/724-5070

Rexall Pharmacy
Make This Your Hdqs.

Consolidated Industrial Equip. Co.
Fort Smith, Arkansas

cooperation with Oklahoma employment service agencies, will assist industry in recruitment of qualified applicants to meet personnel staffing requirements.

With the 'Arkansas River only about 30 miles away, Adair County is looking for an industrial boom now that the Arkansas and Verdigris Rivers are opened to navigation.

INDUSTRIES INTERESTED IN THIS AREA ARE INVITED TO WRITE JERRY PANTER, PRESIDENT OF THE STILWELL CHAMBER OF COMMERCE.



Stilwell's growing, up-to-date library

This page made possible through the contributions of the following:

HOLBIRD INDUSTRIES
Building Materials, Trusses & Prefabs

CAINS COFFEE COMPANY
Hotel & Restaurant Blended Coffee

PEPSI COLA COMPANY
Tahlequah, Oklahoma

WONDER BREAD
Fayetteville, Arkansas

NATIONAL STEEL SERVICE CENTER
Tulsa, Okla. 918/582-5291

JOLLY CHEF RESTAURANT & BAKERY
Next to Piggly Wiggly

INDUSTRIAL UNIFORM & TOWEL SUPPLY, INC.
"Uniforms that Advertise"

VIP LUNCHEON

Again this year on Strawberry Festival Day, the Stilwell Kiwanis Club will sponsor a VIP luncheon at the Stilwell Community Facilities Building.

Governor David Boren of Oklahoma will be the principal speaker. The Strawberry Singers of Stilwell High School will present the entertainment.

Tickets for the luncheon are being sold for \$5.

Shuttle buses will be used to transport the luncheon guests from the downtown area to the community building.



Stilwell is h

BERRIES ON SA

The public will pay a minimum of \$12 per crate of strawberries on Strawberry Festival Day in Stilwell. Growers will have their berries in the parking lot just outside the Adair County Court House, and

SECOND SATURDAY

Stilwell's Strawberry Festival will be held on the second Saturday of May, the day before Mother's Day.

OLD MILL

A water wheel, known as Goddard's, located at Bitting Springs off State Highway 10 in Stilwell, is more than 100 years old. The wheel still provides power for a mill, just as it did for the Indians.

HUNTER'S 5 and 10
Clifton and Christine Hunter

FARMERS PRODUCE AND
Feed—Seed—Fertilizer

ISAACS' CONOCO STAT
Stilwell, Oklahoma

COLLINS FIRESTONE
Tires—Batteries—Appliances

NORTH END FABRIC SHOP
Welcome to Our Festival

SEARS
Alex and Jan James



Stilwell is home for a unit of the Oklahoma National Guard

BERRIES ON SALE

The public will pay a minimum of about \$12 per crate of strawberries on Festival Day in Stilwell. Growers will be selling their berries in the parking lot just west of the Adair County Court House, as in the past.

SECOND SATURDAY

Stilwell's Strawberry Festival is held on the second Saturday of May each year—just the day before Mother's Day.

OLD MILL

A water wheel, known as Golda's Old Mill, located at Bitting Springs off SH 51 west of Stilwell, is more than 100 years old. The wheel still provides power for grinding corn, just as it did for the Indians and settlers.



Girls show dogwood blooms

This page made possible through the contributions of the following:

HUNTER'S 5 and 10
Clifton and Christine Hunter

FARMERS PRODUCE AND MILL
Feed—Seed—Fertilizer

ISAACS' CONOCO STATION
Stilwell, Oklahoma

COLLINS FIRESTONE
Tires—Batteries—Appliances

NORTH END FABRIC SHOP
Welcome to Our Festival

SEARS
Alex and Jan James

STILWELL FLOWER SHOP
Flowers for all occasions

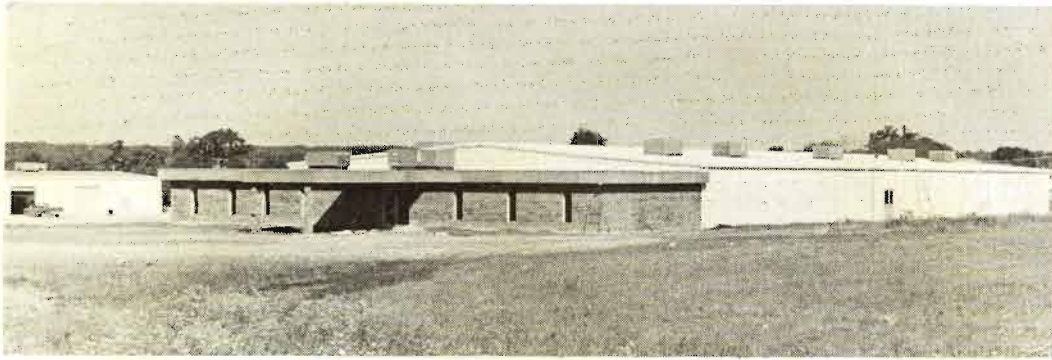
DELMAR AUFFET
FRUIT STAND

LEE'S APCO
Welcome to Our City

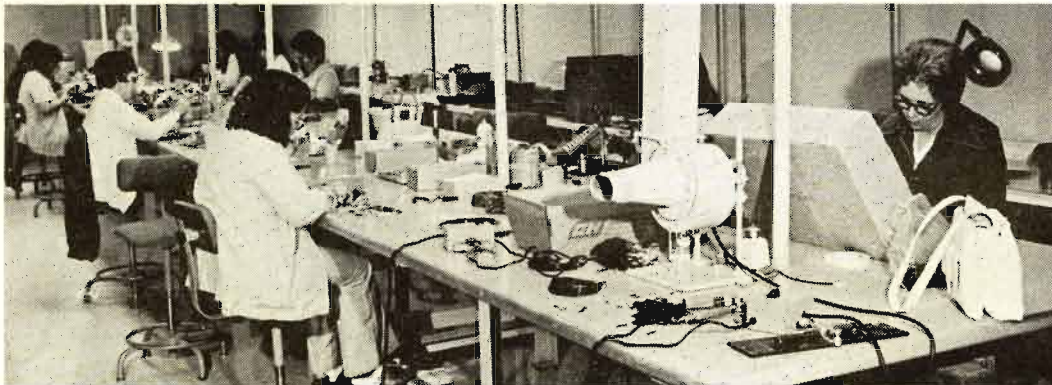
CAVINESS SERVICE STATION
"Your Business Appreciated"

RONNY'S GROCERY
306 S. 2nd, Stilwell

"Y" GULF STATION
Ray and Family



Cherokee Nation Industries, Inc.



**CHEROKEE NATION INDUSTRIES, INC., IS
INVOLVED IN MANUFACTURING AND ASSEMBLING
ELECTRONIC PARTS AND PRODUCTS.**

**This page made possible through the
contribution of:**

Cherokee Nation Industries, Inc.

**Highway 51 West
Stilwell, Oklahoma**

Stilwell Churches

Most religious faiths are represented in the immediate Stilwell area.

Other denominations have churches in communities surrounding Stilwell.

The local churches are:

Assembly of God Church

Central Baptist Church

Church of Christ

First Baptist Church

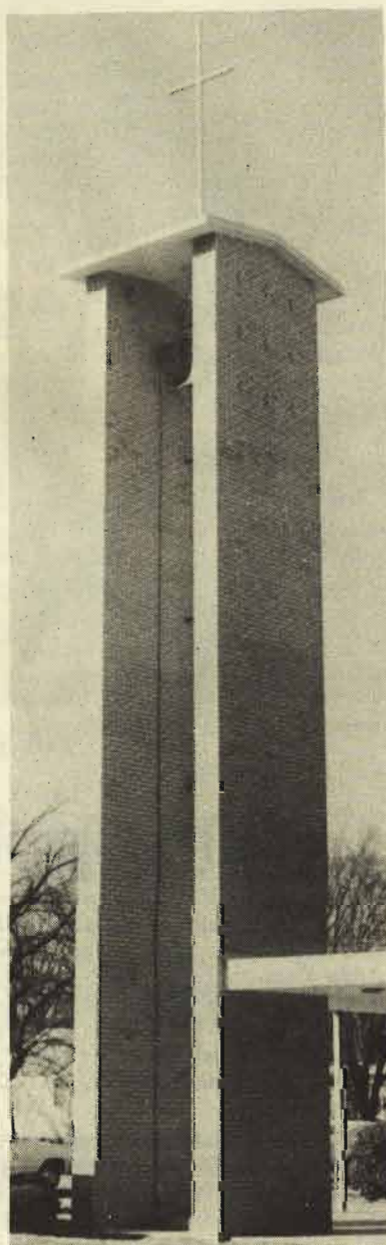
First Christian Church

First United Methodist Church

Free Holiness Church

United Methodist Indian Church

Pentecostal Holiness



This page made possible through the contributions of the following:

KENNETH, JOHNNIE & KEN RAINS
OTASCO—Stilwell

MEANS FURNITURE CO.
Jerry & Ann Means

STILWELL CAFE
Welcome, Visitors

NADINE'S DRY GOODS
Welcome to Our Festival

STILWELL MERCANTILE
Burnell Isaacs, Mgr.

DE JARNATT BROTHERS
Ben & Jim—Dirt Contractors

REASOR'S DISCOUNT FOODS
"We Sell for Less"

JOE HEWGLEY, INC., DIST.
Tom's Toasted Peanuts—Rogers, Ark.



Turkey raising is another local industry

From apples to zucchini

It's A to Z (apples to zucchini) for fruits and vegetables grown and processed in Adair County.

Agriculture is big business here.

In the past 50 years, sale of livestock and livestock products has been the principal source of agriculture income in Adair County.

Adair County products—including strawberries, green beans, apples and peaches—are sold all over the nation. Some are processed locally, while others are shipped

fresh.

Stilwell is the home of Stilwell Foods, Inc., which has nationwide distribution; the Adair County Orchard Co., which is the largest in this four-state region; and the Ideal Fruit Farm.

Corn, small grain, grain sorghums and improved grasses and legumes for hay are grown mostly as feed for livestock. Timber is regarded as an important cash income.

Several poultry processing plants also flourish in this area.

**This page made possible through the
contributions of the following:**

PRESTON REFRIGERATION CO.
Fort Smith, Arkansas

DIAMOND INTERNATIONAL CORP.
Heekin Can Div., Springdale, Ark.

ARST EQUIPMENT COMPANY
Clark Fork Lifts—Tulsa

STILWELL SPEED WASH
Corner of Highways 59 & 100

AAA ABSTRACT CO., INC.
Nancy Garrett, manager, Stilwell

McSPADDEN HOME SERVICE
Phones 774-7589 and 774-3625

GENERAL INDUSTRIAL SUPPLY, INC.
Muskogee, Oklahoma

MUIR'S QUICK MEAL PRODUCTS
Wewoka, Oklahoma

Historical briefs

Stilwell was named for Arthur Edward Stilwell who built the Kansas City Southern Railway, founded several dozen hamlets and villages, and created a city, Port Arthur, Tex., named for himself. Between 1886 and 1912, he made sizable contributions to the economic growth of the south-central states of Oklahoma, Arkansas, Louisiana, and Texas.



At Tsa-La-Gi Village

Deer, elk, and buffalo were the first grazing animals recorded in this area by Washington Irving in his book, "Tour of the Prairie," written in 1822.

The United States Congress passed a bill in 1830 for the removal of the Five Civilized Tribes from the southeastern part of the U.S. into Indian Territory, now known as Oklahoma. All of Adair County became a

part of the Cherokee Nation. Many Cherokees were already here when, in about 1838, the Eastern Cherokees were forced to leave their homes in Georgia, Tennessee, and North Carolina and were driven over the infamous "Trail of Tears," ending in the northern part of Adair County at Mission Mountain.

The Strawberry Festival dates back to 1948 when the Stilwell Kiwanis Club decided to do something about stimulating interest in one of Adair County's economic resources.

Adair County was named in honor of a prominent Cherokee jurist and educator.

Stilwell was a red haw thicket, interspersed with persimmon trees, in 1895 when the Kansas City Southern Railway bought a right-of-way from Mrs Martha Johnson and Mrs Elizabeth Freeman. Very soon, lots were offered for sale and a town plat laid out.

About 91 per cent of the persons living in the southern part of Adair County are of Cherokee descent. Also, the county has the greatest concentration of Cherokee Indians in the United States.

The First United Methodist Church of Stilwell had its inception in 1839 at a meeting of Methodists who had come over the "Trail of Tears."

RESTROOMS

Portable restrooms for men and women will be set up in the area of the band stand on Strawberry Festival Day in Stilwell. If you can't find one, ask for information from a Kiwanian or a National Guardsman.

This page made possible through the contributions of the following:

Leon C. Osborn Co., Inc.
Springdale, Arkansas

Stilwell Municipal Hospital & Staff
Welcome You to the Festival



Make Stilwell your Hqs.

Stilwell will make an ideal headquarters for you while you are visiting points of

interest within easy driving distance in all four directions.

This page made possible through the contributions of the following:

REED'S HARDWARE & FURNITURE
Sarah—Quentin—Gene

ARKHOLA SAND & GRAVEL CO.
Grade A Blocks—Fort Smith, Ark. & Muskogee

AFCO METALS, INCORPORATED
3115 S. Zero St., Ft. Smith, Ark.

STILWELL READY MIX
U.S. 59 North

KELLEY CANNING CO., INC.
Prairie Grove, Arkansas

LEO BELLER ATHLETIC GOODS CO.
Muskogee, Oklahoma

WHITE DAIRY, INC.
Fort Smith, Arkansas

PACKAGING ASSOCIATES
Little Rock, Ark. 501/376-8496



Boating on the Illinois River

This is 'Green Country'

Come to the "Green Country" and enjoy spectacular vistas at every turn.

Valleys, tree-covered mountains, unlimited water fun.

Come, enjoy it all—the best of Oklahoma, crowded with color, a wide variety of things to see and do. Visit colorful and historic nearby communities, enjoy the mountains, sun, swim, fish, play golf, enjoy water sports. All this and more in highly agreeable climate.

The Illinois River, which winds its way

through Adair County, is one of the most beautiful streams anywhere.

Beautiful Lake Tenkiller, located just a few minutes' drive west of Stilwell, is among the major attractions in this area.

Tenkiller Ferry Dam, which impounds water forming Lake Tenkiller, is located on the Illinois River near Gore. It was built by the Corps of Engineers in 1953 at a cost of \$23,822,000, principally for flood control, navigation and production of hydro-electric power.

This page made possible through the contributions of the following:

Garrett Chevrolet
and Olds. Co., Inc.

Piggly Wiggly
& Speedy Mart

J.R. Penick, Jr.
Grower, Packer & Shipper Sweet Potatoes



Carnation Ice Cream
is being furnished for the
Twenty-Ninth Annual Strawberry Festival
through courtesy of

Mc's Restaurant
J's Meat Market
O'Neal's Grocery
Stilwell Cafe
Worsham Grocery
Buzzard's Grocery
Saveway Grocery
Doss Stilwell Grocery
Speedy Mart
Piggly Wiggly
Quick Pick
Grannie's Day Care
Johnson's Drive-In

Twilley's Grocery
Beacon Drive-In
Peavine School
McGowan Grocery
G&P Stop 'n' Shop
Ronnie's Grocery
Stilwell Municipal Hospital
Claude King Grocery
George's Fruit Market
Stilwell Foods Cafeteria
Pruitt's Grocery
Rider Cafe
Jolly Chef

"For Contented Families"