

28th Annual

Strawberry Festival

Stilwell, Oklahoma

May 10, 1975



Queen Karen Baublitt

Greetings, Visitors!

Greetings, friends and visitors!

Welcome to the 1975 Strawberry Festival. This year we celebrate our 28th Festival and we hope it will be the biggest and best yet.

Festival Day will be crammed full of entertainment and treats for the entire family. Enjoy the parade, the bandstand entertainment, the Stilwell Roundup Club's annual rodeo, and feast on free strawberries

and ice cream.

If time permits, drive through the surrounding countryside. See why this is called "Green Country."

Again, we are glad to have you here in Stilwell and hope you will make this an annual "must" on your calander.

Jack Smay
Kiwanis Club President

Kiwanis Club officers

Jack Smay
President

Charles McFarland
Past President

Ralph Casteel
Vice President

Berry A. Ferguson
Secretary-Treasurer

Joe H. Carson
Past Lieutenant-Governor

W. Neil Morton
Past Lieutenant-Governor

Jack Perry, Lieutenant-Governor Designate

Kiwanis Club members

Bob Alderson
Robert L. Baker
J.D. Briggs
Joe H. Carson
Joe L. Carson
Ralph Casteel
Bill Cline
Charles Cosby
Hershal Dotson
Larry Eubanks
Berry Ferguson
H.D. Gound

J.L. Hallford
V.O. Hatley
E.R. Kirkbride
Tommy Lamb
Sam Love
Charles O. McFarland
Jerry Means
Nesbert L. Miller
W. Neil Morton
Tobe O'Neal
W.B. Pemberton
Jack Perry

Charles P. Rainbolt
Larry Roberts
Jack Smay
Don Smothers
L.T. Spray
Elgin R. Strahm
Larry N. Strauss
Claude Todd
Tom Todd
William F. Todd
Marvin Wright Jr
Wade Zumwalt

About the cover

Official photograph of Miss Karen Baublitz who will be crowned queen of the 1975 Strawberry Festival in Stil-

well on Saturday, May 10.

The cover was made possible through the contribution of Stilwell Foods, Inc.

This page made possible through
the contributions of the following:

FELTS FAMILY SHOE STORE
Foot Wear for the Family

STILWELL LUMBER CO.
774-7058—Building Supplies

COX CIRCLE INN MOTEL
774-7022—Downtown Stilwell

LLOYD BREWER CITY FILLING STAT.
"43 Years Continuous Service"

TANKERSLEY BROS PACKING CO
Fort Smith, Arkansas

STILWELL PACKING CO.
Stilwell, Oklahoma

Program for

George Mack Johnson and His

Parade

National Anthem.....

Invocation.....
The Rev

Salute to the Flag

Introduction of Guests.....
Jac

Crowning of Strawberry Festival

Welcoming Address.....
Jac

Strawberry Singers of Stilwell

Shrimp Fisher and His Western

Gospel Singing

Chieftains, Stilwell; The Lin

Awards to Champion Strawberry

Strawberry Auction

Free Servings of Strawberries

IRA Rodeo, Thursday, Friday

Ozarks Electric Co.
"Consumer-Owned"

Program for May 10, 1975

Neil Morton, Master of Ceremonies

George Mack Johnson and His Western Band	9:00 a.m.
Parade	10:00 a.m.
Jack Perry, Parade Marshal	
National Anthem	11:00 a.m.
Camille Morton	
Invocation	11:05 a.m.
The Rev. William Todd, First United Methodist Church	
Salute to the Flag	11:10 a.m.
Boy Scouts of America	
Introduction of Guests	11:15 a.m.
Jack Smay, President, Stilwell Kiwanis Club	
Crowning of Strawberry Festival Queen for 1975	11:20 a.m.
Welcoming Address	11:30 a.m.
Jack Smay, President, Stilwell Kiwanis Club	
Strawberry Singers of Stilwell High School	11:35 a.m.
Shrimp Fisher and His Western Band	12:00 a.m.
Gospel Singing	1:00 p.m.
Chieftains, Stilwell; The Linvel Arington Singers, Harrison, Ark.; The Harmony Four, Alma, Ark.	
Awards to Champion Strawberry Growers	2:00 p.m.
Strawberry Auction	2:15 p.m.
Free Servings of Strawberries and Ice Cream	3:00 p.m.
IRA Rodeo, Thursday, Friday and Saturday, May 8-10	8:30 p.m.
Sponsored by Stilwell Roundup Club	

This page made possible through
the contributions of the following:

Ozarks Electric Cooperative
"Consumer-Owned Utility"

C.J. Carson
Insurance Agency

"The Friendly"
Bank of Commerce



Rebecca Matney, left, Queen Karen Baublitz, and Ivanna Hembree

1975 Queen and attendants

Miss Karen Baublitz, 17-year-old senior at Westville High School, was selected March 21 as Queen of the 1975 Strawberry Festival in Stilwell.

Miss Baublitz, daughter of Mr. and Mrs. Herbert Baublitz, Route 2 Westville, will have Miss Rebecca Matney, 17, and Miss Ivanna Hembree, 16, as her attendants.

Miss Matney, first runnerup in the contest, is the daughter of Mr. and Mrs.

Dale Matney, Westville; and Miss Hembree, second runnerup, is the daughter of Mr. and Mrs. Ivan Hembree, Stilwell.

Twelve Adair County girls competed for the Strawberry Festival Queen title. More than 300 persons attended the contest held in the E.G. McLemore Field House.

Judges from Fayetteville, Ark., Muskogee and Tahlequah based their decision on personality, poise and beauty.

This page made possible through
the contributions of the following:

LLOYD AND PAT COLE
Hi, You-All

THE OLD TRADING POST
Antiques and Junque

STILWELL AUTO SUPPLY
Lula Mae Hurlbut, Owner

FLETCHER'S HARDWARE
Phone 774-7500

PEMBERTON REAL ESTATE
Barnes Pemberton, Broker. Welcome to Festival

ALTON COUNCIL BROKERAGE CO.
Food Brokers—Ft. Smith, Arkansas



Everybody

Twenty thousand persons
few, crowded into Stilwell
27th annual Strawberry Fe

They saw an 80-minute pa
a wide variety of music, saw
Strawberry Festival Quee
the championship strawber
their awards, watched t
auction, and lined up for t
free strawberries and ice c

Garrett Ch
and Olds C



Rose Garden Club's prize-winning float

Everybody loves a parade

Twenty thousand persons, give or take a few, crowded into Stilwell last year for the 27th annual Strawberry Festival.

They saw an 80-minute parade, listened to a wide variety of music, saw the 27th annual Strawberry Festival Queen crowned, saw the championship strawberry growers get their awards, watched the strawberry auction, and lined up for their share of the free strawberries and ice cream.

Many stayed over that night for the final performance of the Stilwell Roundup Club's rodeo which is sanctioned by the International Rodeo Association.

For the record, a few drops of rain fell, but did not mar the activities. No rain fell on Festival Day the previous three years.

The line of march of the parade included 23 bands, nine floats, and 290 horses.

Prize-winning floats in the non-

**This page made possible through
the contributions of the following:**

**Garrett Chevrolet
and Olds Co., Inc.**

**J.R. Penick, Jr.
Grower, Packer & Shipper Sweet Potatoes**

**Piggly Wiggly
& Speedy Mart**



Thousands lined the streets for the parade

commercial division were entered by the Rose Garden Club, first; Methodist Youth Fellowship, second; and Stilwell Future Farmers of America Chapter, third. In the

commercial division, Piggly Wiggly carried off top honors followed by: Stilwell Foods, Inc., second; and Bank of Commerce, third.



Walt Disney characters an extra attraction with Sallisaw's band



Queen and attendants rode in antique car driven by owner Jimmy Leake of Muskogee

This page made possible through the contributions of the following:

ARKANSAS OFFICE EQUIPMENT CO.
Fort Smith, Arkansas

H.C. SCHMIEDING PRODUCE CO., INC.
Springdale, Arkansas

MEAD CONTAINERS, DIV. MEAD CORP.
Fort Smith, Arkansas

ARKHOLA SAND & GRAVEL CO.
Grade A Blocks—Fort Smith, Ark. & Muskogee

STILWELL READY MIX
U.S. 59 North

LEO BELLER ATHLETIC GOODS CO.
Muskogee, Oklahoma



Queen Nina Reagan,

The Festi

Miss Nina Reagan reigned as queen crowned by Howard N. Texas-Oklahoma Kiw

The queen, daughter was attended by daughter of Mr and M and Miss Terri Presl and Mrs Bill Presley

KENNETH, JOHNNIE
OTASCO—S

MEANS FURNITURE
Jerry & Ann

STILWELL
Welcome, Vi



Queen Nina Reagan, Nanette Holt and Terri Presley. At left is Howard Newton

The Festival's 1974 Queen

Miss Nina Reagan, Route 1 Stilwell, reigned as queen of the 1974 Festival, crowned by Howard Newton, Houston, Tex., Texas-Oklahoma Kiwanis District governor.

The queen, daughter of Mrs Amy Reagan, was attended by Miss Nanette Holt, daughter of Mr and Mrs Jack Holt, Stilwell; and Miss Terri Presley, 18, daughter of Mr and Mrs Bill Presley, Route 2 Stilwell.



A kiss for queen

This page made possible through
the contributions of the following:

KENNETH, JOHNNIE & KEN RAINS
OTASCO—Stilwell

MEANS FURNITURE CO.
Jerry & Ann Means

STILWELL CAFE
Welcome, Visitors

REASOR'S DISCOUNT FOODS
"We Sell for Less"

CALVERT-McBRIDE PRINTING CO.
Fort Smith, Arkansas

STILWELL MERCANTILE
Burnell Isaacs, Mgr.

DE JARNATT BROTHERS
Dirt Contractors



Top berries

Leonard Baird shows off his 16-quart crate of Atlas strawberries, a new variety, which won first in the open class and the grand championship of the 1974 Strawberry Festival.

Bill Auffet won second place in the open class with a crate of Sunrise berries, another new variety.

In the Blakemore class, Ernest Hendrix won first; and Bob Davenport, second.

Other prize winners in the Blakemore class were: Mrs Lucille Hurd, third; and Billy Brunk, fourth.

For 1975, all varieties will compete in the same class.

The public will pay a minimum of about \$10 for a crate of berries on Festival Day. Growers will be selling their berries in the parking lot just west of the Adair County Court House, as in the past.

This page made possible through the contributions of the following:

PRESTON REFRIGERATION CO.
Fort Smith, Arkansas

DIAMOND INTERNATIONAL CORP.
Heekin Can Div., Springdale, Ark.

ARST EQUIPMENT COMPANY
Clark Fork Lifts—Tulsa

BERT'S 66 SERVICE STATION
Stilwell, Oklahoma

FADLER COMPANY, INC.
Fresh Fruits, Vegetables, Frozen Foods

EKCO PRODUCTS, INC.
Dallas, Texas

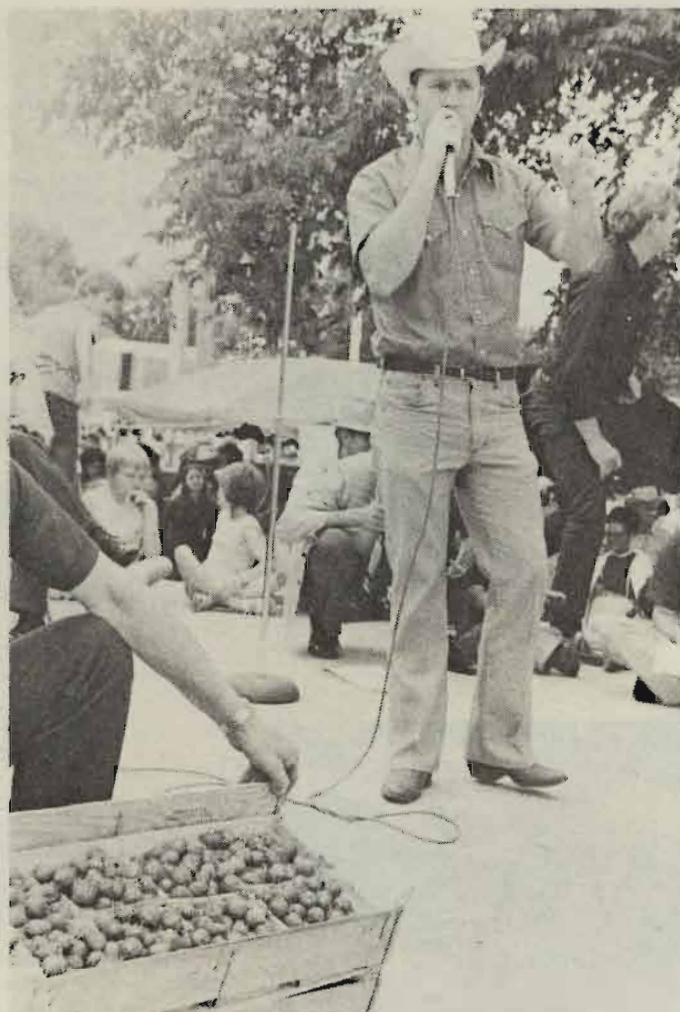
Growers

Bidders paid a total of crates of strawberries at t
This is an average of \$11

Leonard Baird's cham
brought \$400 from Stilw

Chemco Pro
Tulsa, Ok

Co



Jerry Means is strawberry auctioneer

Growers get cash at auction

Bidders paid a total of \$1,865 for the 16 crates of strawberries at the auction in 1974. This is an average of \$115.56 per crate.

Leonard Baird's championship berries brought \$400 from Stilwell Foods, Inc., at

the auction.

Ernest Hendrix, who had the first place winner in the Blakemore class, sold his crate to Kelley Canning Co. of Prairie Grove, Ark., for \$350.

**This page made possible through
the contributions of the following:**

**Chemco Products, Inc.
Tulsa, Oklahoma**

**Chaffin Pharmacy
Make This Your Hdqs.**

**Consolidated Industrial Equip. Co.
Fort Smith, Arkansas**



Thousands lined up for their free strawberries and ice cream, climaxing the activities of the 1974 Strawberry Festival, Adair County's biggest event of the year.

This page made possible through the contributions of the following:

Foremost Milk
A Perfectly Balanced Milk

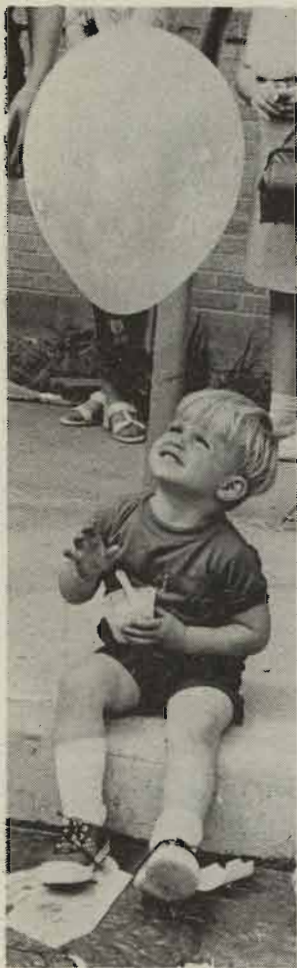
Griffin Construction Company
General Contractors - Ft. Smith, Ark.

T&H Starr Valley Angus Farms
Canadian & Emulous Sires. Thornton & Harris



There's nothing strawberries and youngsters agree. At the crowd, taking in the lawn.

Bruce-Rogers
Fort Smith—Ro



There's nothing better than a dish of strawberries and ice cream, these youngsters agree. At right is a small part of the crowd, taking it easy on the courthouse lawn.



This page made possible through
the contributions of the following:

Bruce-Rogers Company
Fort Smith—Rogers, Ark.

Jim Hopkins Ford, Inc.
Stilwell, Oklahoma

VIP Sales Company
4673 S. 83rd East Ave, Tulsa, Ok. 74145



Picking berries fun for some

Hundreds of migrant workers, students and housewives pitch in each year to help harvest Adair County's strawberry crop.

About 450 acres are in strawberries in Adair County—Oklahoma's biggest producer. Strawberries mean \$500,000 or more annually in the county's economy.

The strawberry is, by no means, Adair County's biggest crop, but it most certainly is its most glamorous crop.



This page made possible through
the contributions of the following:

Chamber of Commerce
Stilwell

Stilwell
Democrat-Journal

Container Corp. of America
Corrugated Containers—Muskogee

CATRON'S STORE
Welcome to the F

DAY DISCOUNT
Best Place to T

B.G. STEWART WH
Candy—Notions—

STILWELL
NURSING HOM



These pictures were made at the same Atlas strawberry patch which produced Leonard Baird's grand championship berries in 1974.



This page made possible through
the contributions of the following:

CATRON'S STORE
Welcome to the Festival

DAY DISCOUNT CO.
Best Place to Trade

B.G. STEWART WHOLESALE
Candy—Notions—Drugs

STILWELL
NURSING HOME

TOM J. CARSON
Insurance Agency

ROBERTS FUNERAL HOME
Serving Adair Co. Since 1913

COCO-COLA BOTTLING CO.
Of Fort Smith, Arkansas

DIXIE PACKAGING COMPANY
Little Rock, Ark. Ph. 501-376-3891



Stilwell is a thriving, growing community

Facts about Stilwell

Population (1970 census)—City, 2,134; Adair County, 15,141. Estimated county population in 1974 was, 16,500.

Labor force—Male, 2,185; female, 792.

Transportation—Federal Highways 59 and 62; and State Highways 51 and 100. Interstate 40 is 30 miles south. The Kansas City Southern Railroad, six truck lines and a bus line serve the area. Stilwell also has a city airport with runways of 1,600 and 2,000 feet.

Government—Mayor-City Council. Active

volunteer fire department with 19 members. Nine city police officers and six county officers. Two Oklahoma Highway Patrolmen are stationed here.

Organizations—Chamber of Commerce, Kiwanis, Garden Club, Roundup Club, Stilwell Study Club, Strawberry Capital Square Dance Club, American Legion, Veterans of Foreign Wars, Masonic Lodge, Order of Eastern Star, Oddfellows Lodge, Rebekah Lodge, Adair County Quarter Horse Association, Adair County Cattle-

This page made possible through
the contributions of the following:

Jones Truck Lines, Inc.
Springdale, Arkansas

Compliments of
Colonial Bread Co.

Wal-Mart Discount City, Stilwell

We really do sell for less. Thank you for shopping Wal-Mart

men's Association, and sev
Extension Homemakers g

Industrial foundation—S
Foundation, a non-profit
recently revitalized and a
land was purchased
industries.

Recreation—Water sp
picnicking at nearby Lake
game and deer hunting;
Area, north edge of Stilw
lake for fishing and swim
and camping facilities,
playground; city swim
gymnasiums; and movie t
courses are located withi

The Stilwell Kiwanis
baseball and swimming
youngsters in this area.

Communications—Inde
telephone company offers
dialing, touch tone an
telephones.

Television reception—T
Tulsa, Okla., and one in F

Special events—Straw
Dogwood and fall foliage t
Adair County Fair.

Health—Thirty-six bed S



HERMAN
Ok. Farm Bureau

ADAIR COUNTY LIVEST
We Appreciate Y

D-X AGI
Selan Hall, How

STILWELL FLA
Flowers for A

men's Association, and seven Adair County Extension Homemakers groups.

Industrial foundation—Stilwell Industrial Foundation, a non-profit organization, was recently revitalized and a 30-acre tract of land was purchased for prospective industries.

Recreation—Water sports, fishing and picnicking at nearby Lake Tenkiller; small game and deer hunting; Adair Recreation Area, north edge of Stilwell, includes small lake for fishing and swimming, plus picnic and camping facilities, and children's playground; city swimming pool; two gymnasiums; and movie theatre. Four golf courses are located within a 30-mile radius.

The Stilwell Kiwanis Club sponsors baseball and swimming programs for youngsters in this area.

Communications—Independently-owned telephone company offers direct distance dialing, touch tone and mobile dial telephones.

Television reception—Three stations in Tulsa, Okla., and one in Fort Smith, Ark.

Special events—Strawberry Festival, Dogwood and fall foliage tours, rodeos and Adair County Fair.

Health—Thirty-six bed Stilwell Municipal

Hospital, and Adair County Health Building. The city has one dentist, four M.D.'s an osteopath, two optometrists and a chiropractor. Two ambulance services operate in Stilwell area.

The Stilwell Nursing Home is a modern facility with 75 beds.

Climate—Average winter temperature is 37.4 degrees. Average summer temperature is 82.1. Rainfall averages 42.46 inches per year. Stilwell's elevation above sea level is 1,112 feet.

Education—One elementary school, one junior high and one high school. Adair County Branch, Indian Capital Area Vocational-Technical School, is located at north edge of Stilwell. John Brown University, Siloam Springs, Ark., is 30 miles away; University of Arkansas, Fayetteville, 50 miles; and Northeastern State University, Tahlequah, 25 miles.

Industrial sites available—Thirty acres, located $\frac{1}{4}$ mile north of city limits on the Kansas City Southern Railroad right-of-way, was recently purchased by the Stilwell Industrial Foundation for prospective industries. Other land on the railroad and one or more highways is also available for industry.



Stilwell's new fire station

This page made possible through
the contributions of the following:

HERMAN JONES
Ok. Farm Bureau Mutual Ins. Co.

ROCK'S IRON & METAL CO.
Scrap, New and Used Iron

ADAIR COUNTY LIVESTOCK AUCTION, INC.
We Appreciate Your Business

REX'S HOUSE
of BARGAINS

D-X AGENCY
Selan Hall, Howard Johnson

THOMAS CLEAN CLEANERS
You-All Come to See Us

STILWELL FLOWER SHOP
Flowers for All Occasions

BACK HOE & DUMP TRUCK SERVICE
Roy Roberts

The Cherokee Tribe is developing an industrial park just south of Stilwell on US 59 with the aid of a government grant.

Prevailing wage scale—U.S. minimum wage and hour law prevails.

Major industries—Stilwell Foods, Inc., Cherokee Nation Industries, Inc., Adair County Orchard Co., and Ideal Fruit Farm.

Motels and Restaurants—Three motels with 56 units. Numerous good eating places.

Water and sewer system—Stilwell has an abundance of clean, pure water—4,000,000 gallons per day—from 140-acre city lake. The lake is large enough to serve Stilwell for

Cooperative serves the rural areas.

Banking—Bank of Commerce has total capital and reserves of \$1,124,597.11 with \$10,872,135.10 in deposits and total assets of \$12,237,848.58.

Indian Industrial Development Assistance—The Bureau of Indian Affairs, in cooperation with Oklahoma employment service agencies, will assist industry in recruitment of qualified applicants to meet personnel staffing requirements.

With the Arkansas River only about 30 miles away, Adair County is looking for an industrial boom now that the Arkansas and



First Baptist Church of Stilwell

three years without a drop of rain falling. Present sewer system is large enough to accommodate a city of 10,000. A \$500,000 industrial sewer system, which can handle 2,000,000 gallons of industrial wastes daily, was completed recently.

Electrical power—The City owns its own electrical distribution system, and gets its own power from the Grand River Dam Authority. Special industrial rates are offered. Present capacity of 5,000 KW could easily be enlarged. Ozarks Electric

Verdigris Rivers are opened to navigation.

INDUSTRIES INTERESTED IN THIS AREA ARE INVITED TO WRITE E.G. CARROLL, PRESIDENT OF THE STILWELL CHAMBER OF COMMERCE.

FIRST-RATE

Adair County is first-rate travel country, principally because you'll find us friendly and helpful and proud of our picture-book scenery and historical spots.

This page made possible through the contributions of the following:

MAYTAG AUTOMATIC LAUNDRY
Gene and Eula Cranford

WESTERN AUTO
Jack and Joy Smay

HUNTER'S 5 and 10
Clifton and Christine Hunter

V.E. VANDERHEIDEN AUTOMOTIVE
319 S. 2nd—Wholesale & Retail

L.R. WEBB, 774-2854, 774-7327
Order Buyer, Stocker & Feeder Cattle

FARMERS PRODUCE AND MILL
Feed—Seed—Fertilizer

SCRUGGS
Radio and Television

MAXINE'S FABRICS
Welcome to Our Festival

ISAACS' CONOCO STATION
Stilwell, Oklahoma

PEGGY'S FLOWERS
"Flowers for all Occasions"

FARMERS SUPPLY CO.
Home of the Farmers' Needs

STOCKMAN FEED & SUPPLY
Stilwell, Oklahoma

STILWELL FFA CHAPTER
Welcomes You to the Festival



CHEROKEE
INVOLVING
ELECTRICITY

Cherokee



Cherokee Nation Industries, Inc.



**CHEROKEE NATION INDUSTRIES, INC., IS
INVOLVED IN MANUFACTURING AND ASSEMBLING
ELECTRONIC PARTS AND PRODUCTS.**

**This page made possible through
the contributions of the following:**

**Cherokee Nation Industries, Inc.
Highway 51 West
Stilwell, Oklahoma**

Stilwell Churches

Most religious faiths are represented in the immediate Stilwell area.

Other denominations have churches in communities surrounding Stilwell.

The local churches are:

Assembly of God Church

Central Baptist Church

Church of Christ

First Baptist Church

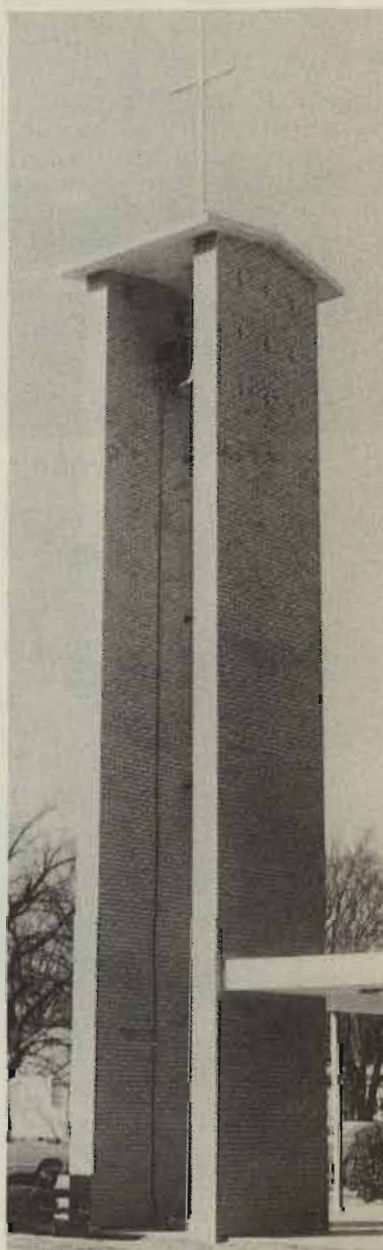
First Christian Church

First United Methodist Church

Free Holiness Church

United Methodist Indian Church

Pentecostal Holiness



This page made possible through the contributions of the following:

DELMAR AUFFET FRUIT STAND
Antiques, 2nd Hand Store, Collector's Items

WATERS REAL ESTATE
& Appraisal Service, Stilwell

LEE'S APCO
Stilwell, Oklahoma

CAVINESS SERVICE STATION
"Your Business Appreciated"

B-C GENERATOR
& Starter Rebuilder

DOSS STILWELL
Grocery and Market

NADINE'S DRY GOODS
Welcome to the Festival

GLEN and ROXIE ROBBINS
Welcome!

STILWELL PHARMACY
Reasonable Prices

ISAACS' GROCERY & FEED
S.L. and Wilma Isaacs

MARTIN'S AUTO REPAIR
Phone 774-7742 - Stilwell

WORSHAM'S CARDINAL
Food Store



Beef cattle

Beef cattle totaling represent the biggest of agricultural production. Cow-calf operations produce feeder calves are the programs. Dairy cows also the county's economy.

Approximately 29,820 Adair County's cropland as strawberries, beans, tomatoes are grown and Other crops include sorghum and small grains.

STILWELL A
RCA, Kelvin

IGA WAREHOUSE
Dale & Ma



Fruit-growing is big business

Beef cattle important

Beef cattle totaling over 43,000 head represent the biggest economic component of agricultural production in Adair County. Cow-calf operations producing stocker and feeder calves are the most popular programs. Dairy cows also are important to the county's economy.

Approximately 29,829 acres constitute Adair County's cropland where such crops as strawberries, beans, okra, squash, and tomatoes are grown and processed locally. Other crops include sorghums, soybeans, and small grains.

Adair County is also famous for its apples and peaches. The county has about 1,110 acres in apple trees, 359 acres in peaches, and 50 acres in pears.

LANDMARK

Golda's Old Mill, located at Biting Springs off SH 51 west of Stilwell, is more than 100 years old. The water wheel still provides power for grinding corn, just as it did for the Indians and the settlers.

**This page made possible through
the contributions of the following:**

STILWELL APPLIANCE
RCA, Kelvinator Dealer

THE JACK RIDERS
Welcome, Visitors

IGA WAREHOUSE MARKET
Dale & Mary Rowan

GREEN COUNTRY MOTORS
Mobile home sales, US 59 S., Overpass, Stilwell

SWEDE'S GROCERY, MKT. & FABRIC SHOP
Swede, Maudine & Employees

Favorite strawberry recipes

Among the favorite strawberry recipes of Adair County's Extension Homemakers are these:

STRAWBERRY PRESERVES

Mrs Leonard Baird, Stoney Point

9 cups sugar

1 cup water

Place on fire. Stir till dissolved.

Add:

2 Heaping quarts strawberries.

Stir gently till berries make own syrup, then shake pan and boil 20 minutes. Remove from fire, shaking pan often. Let stand over night.

May be put in freezer or heat and pour into jars.

STRAWBERRY PIE

(Mrs Floyd Cox, Zion)

1 quart frozen strawberries thawed and drained

Reserve berries to add later.

In sauce pan add:

2 cups drained strawberry juice

1 cup sugar

5 tablespoons cornstarch (rounded)

Cook 3 minutes. Add red food coloring. Cool. Add strawberries and 3 sliced bananas. Pour into baked pie shells. Top with whipped cream. Makes two 8-inch pies.

STRAWBERRY RHUBARB PIE

(Mrs Mary Harris, Rock Springs)

1 1/4 cups sugar

1/4 cup flour

1 cup fresh strawberries (or frozen)

2 cups diced rhubarb

2 tablespoons butter

pastry for 2 crust pie

Sift sugar and flour together and combine 3/4 of it with fruit. Line pie pan with pastry, sprinkle remaining dry mixture over bottom and add filling. Dot with butter and arrange pastry strips over top in lattice design. Bake in hot oven (425 F) 10 minutes. Reduce to moderate (350 F) and bake 30 minutes or until fruit is tender. Makes one 9-inch pie.

STRAWBERRY ICE CREAM

1 1/2 quarts strawberries

1 1/2 cups sugar

2 cups half & half cream

1 to 2 tablespoons lemon juice

1/4 teaspoon salt

Wash and cap berries. Chop, cover with sugar and let stand in cold place from 2-3 hours. Press the sweetened fruit through a colander. Add the cream, lemon juice, salt and freeze. Use a freezing mixture of 1 part salt and 4-6 parts ice. Turn the crank of the freezer slowly. After freezing, remove the dasher, pack the freezer with more ice and salt and let the cream stand for an hour or more to ripen in flavor.

STRAWBERRY MOUSSE, BLENDER METHOD

(Mrs Ernest Vogt, Stilwell)

1/4 cup milk

1/4 cup sugar

4 cups (about 7 ounces) miniature marshmallows

1 package (1 pound) frozen strawberries (partially defrosted and cubed)

1 teaspoon vanilla

2 cups whipped cream or dessert topping

Heat milk and sugar to scalding stage. Empty marshmallows into container, add hot milk and crumb (blender button no. 3) until smooth about 25 seconds. Add strawberries and vanilla, crumb (blender button no. 3) until well mixed, about 15 seconds. Pour into bowl and fold in whipped cream or dessert topping. Pour into 9x5x3-inch loaf pan. Freeze. Serve plain or with strawberry or chocolate sauce. Yield about 5 cups.

COUNTY GROWING

Adair County's population has increased by an estimated 1,300 persons since 1970. Present estimated population is 16,500.

This page made possible through
the contributions of the following:

EAGLE THEATRE
Bargain Entertainment

STILWELL BUTANE CO.
Welcome to the Festival

BALLENTINE PRODUCE, INC.
Alma, Arkansas

CARNATION CO., CAN DIVISION
Mt. Vernon, Missouri

SHARPE'S DEPARTMENT STORE
Welcome to Adair County

REED'S HARDWARE & FURNITURE
Sarah—Quentin—Gene

AFCO METALS, INCORPORATED
3115 S. Zero St., Ft. Smith, Ark.

Historic

Stilwell was named for Stilwell who built the Kaibab Railway, founded several villages, and created a Texas, named for himself. In 1912, he made sizable contribution to the economic growth of the state of Oklahoma, Arkansas and Texas.



Old Baptist Mission Church

Deer, elk, and buffalo grazing animals recorded by Washington Irving in "Tour of the Prairie,"

The United States Congress in 1830 for the removal of Tribes from the southeastern U.S. into Indian Territory in Oklahoma. All of Adair County was included.

Kelley Cannery
Prairie Grove

Historical briefs about county

Stilwell was named for Arthur Edward Stilwell who built the Kansas City Southern Railway, founded several dozen hamlets and villages, and created a city, Port Arthur, Tex., named for himself. Between 1886 and 1912, he made sizable contributions to the economic growth of the south-central states of Oklahoma, Arkansas, Louisiana, and Texas.



Old Baptist Mission

Deer, elk, and buffalo were the first grazing animals recorded in this area by Washington Irving in his book, "Tour of the Prairie," written in 1822.

The United States Congress passed a bill in 1830 for the removal of the Five Civilized Tribes from the southeastern part of the U.S. into Indian Territory, now known as Oklahoma. All of Adair County became a

part of the Cherokee Nation. Many Cherokees were already here when, in about 1838, the Eastern Cherokees were forced to leave their homes in Georgia, Tennessee, and North Carolina and were driven over the infamous "Trail of Tears," ending in the northern part of Adair County at Mission Mountain.

The Strawberry Festival dates back to 1948 when the Stilwell Kiwanis Club decided to do something about stimulating interest in one of Adair County's economic resources.

Adair County was named in honor of a prominent Cherokee jurist and educator.

Stilwell was a red haw thicket, interspersed with persimmon trees, in 1895 when the Kansas City Southern Railway bought a right-of-way from Mrs Martha Johnson and Mrs Elizabeth Freeman. Very soon, lots were offered for sale and a town plat laid out.

About 91 per cent of the persons living in the southern part of Adair County are of Cherokee descent. Also, the county has the greatest concentration of Cherokee Indians in the United States.

The First United Methodist Church of Stilwell had its inception in 1839 at a meeting of Methodists who had come over the "Trail of Tears."

RESTROOMS

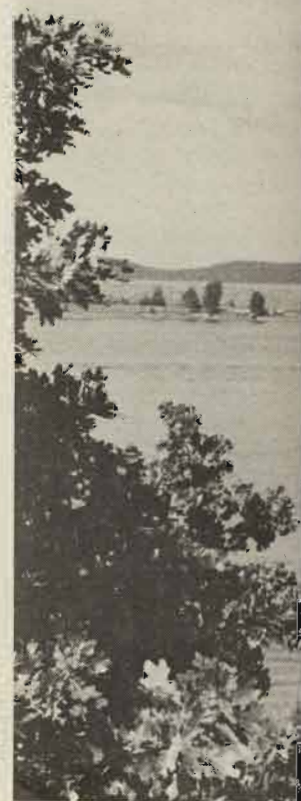
Portable restrooms for men and women will be set up in the area of the band stand on Strawberry Festival Day in Stilwell. If you can't find one, ask for information from a Kiwanian or a National Guardsman.

This page made possible through the contributions of the following:

**Kelley Canning Co., Inc.
Prairie Grove, Arkansas**

**International Multifoods
Minneapolis, Minnesota**

**Ferry-Morse Seed Company
Memphis, Tennessee**



In heart

Come to the "Green C...
spectacular vistas at ever...
Valleys, tree-covered m...
ed water fun.

Come, enjoy it all—the...
crowded with color, a wid...
to see and do. Visit col...
nearby communities, enj...
sun, swim, fish, play g...
sports. All this and more i...
climate.

The Illinois River, whi

Make Stilwell your headquarters

Stilwell will make an ideal headquarters
for you while you are visiting points of

interest within easy driving distance in all
four directions.

This page made possible through
the contributions of the following:

Zero Mountain, Inc.
Fayetteville, Arkansas

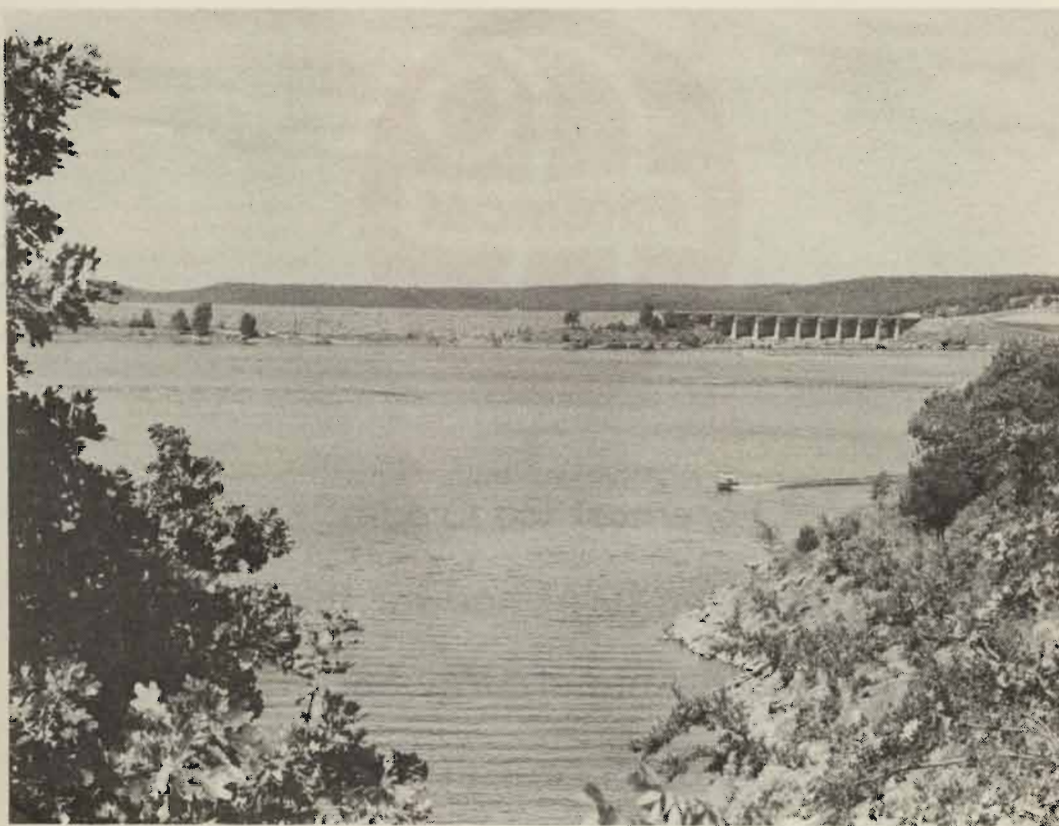
Leon C. Osborn Co., Inc.
Springdale, Arkansas

Stilwell Municipal Hospital & Staff
Welcome You to the Festival

AAA ABSTRA...
Nancy Garrett, I

McSPADDEN HO...
Phones 774-7589

GENERAL INDUSTR...
Muskogee, C



Lake Tenkiller is among area attractions.

In heart of 'Green Country'

Come to the "Green Country" and enjoy spectacular vistas at every turn.

Valleys, tree-covered mountains, unlimited water fun.

Come, enjoy it all—the best of Oklahoma, crowded with color, a wide variety of things to see and do. Visit colorful and historic nearby communities, enjoy the mountains, sun, swim, fish, play golf, enjoy water sports. All this and more in highly agreeable climate.

The Illinois River, which winds its way

through Adair County, is one of the most beautiful streams anywhere.

Beautiful Lake Tenkiller, located just a few minutes' drive west of Stilwell, is among the major attractions in this area.

Tenkiller Ferry Dam, which impounds water forming Lake Tenkiller, is located on the Illinois River near Gore. It was built by the Corps of Engineers in 1953 at a cost of \$23,822,000, principally for flood control, navigation and production of hydro-electric power.

This page made possible through
the contributions of the following:

AAA ABSTRACT CO., INC.
Nancy Garrett, Mgr., Stilwell

McSPADDEN HOME SERVICE
Phones 774-7589 and 774-3625

GENERAL INDUSTRIAL SUPPLY, INC.
Muskogee, Oklahoma

CAINS COFFEE COMPANY
Hotel & Restaurant Blended Coffee

PEPSI COLA COMPANY
Tahlequah, Oklahoma

WONDER BREAD
Fayetteville, Arkansas



Foremost Ice Cream
is being furnished for the
Twenty-Eighth Annual Strawberry Festival
through courtesy of

NORTH SIDE DRIVE-IN
JOLLY CHEF CAFE
RIDER'S CAFE
WORSHAM'S GROCERY
SWEDE'S GROCERY
PIGGLY WIGGLY STORE
SPEEDY MART GROCERY
ISAACS' GROCERY
SAVE WAY GROCERY
CHAFFIN REXALL DRUG
STILWELL GROCERY
RONNIE'S GROCERY
IGA WAREHOUSE
GEORGE'S GROCERY
LEATHERWOOD GROCERY
REASOR'S DISCOUNT FOODS #3
CARL'S DRIVE-IN
A-I DAIRY CUP
ITZA MART
A&R GROCERY

MARIE'S GROCERY
PROCTOR GROCERY
C&S GROCERY
DOYLE'S GROCERY
CHRISTIE GROCERY
PIGGLY WIGGLY, WESTVILLE
SLOAN'S DAIRY BAR
FARMERS MARKET
DUNN'S MARKET
BARON GROCERY
PAT'S GROCERY
CHALK BLUFF GROCERY
QUICK PICK GROCERY
DOC BEENE'S RESTAURANT
CLIFF'S DRIVE-IN
STARR'S DRIVE-IN
LEACHE'S STATION
WALDROOP GROCERY
STEVENS' BAIT SHOP
ISAACS' DISCOUNT CENTER

Schools serving Foremost include:

MARYETTA SCHOOL
ZION SCHOOL

BELL SCHOOL
COOKSON HILLS SCHOOL

HAPPY TIME DAY CARE