

27th Annual

# Strawberry Festival

Stilwell, Oklahoma

May 11, 1974



Queen Nina Reagan

# Welcome to the Festival!

Once again it is with the greatest of pleasure that we of the Stilwell Kiwanis Club extend a hearty welcome to you to help us celebrate our Strawberry Festival on Saturday, May 11th.

It is indeed gratifying to our club to be able to sponsor and host this event where old friends meet, acquaintances are renewed and new friends are made in a relaxed and fun-filled atmosphere.

We, of the Stilwell Kiwanis Club, along

with all residents of Adair County are justifiably proud of our area and of our annual Strawberry Festival. Literally months of labor have gone into the preparation and planning for this year's Festival. It is our sincere wish that you enjoy our Festival Day as much as we have enjoyed making it possible.

Charles O. McFarland  
President

## Kiwanis Club officers

Charles McFarland  
President

Don Smothers  
Vice President

Joe H. Carson  
Past Lieutenant-Governor

Larry Roberts  
Past President

Berry A. Ferguson  
Secretary-Treasurer

W. Neil Morton  
Past Lieutenant-Governor

## Kiwanis Club members

Bob Baker  
Kenneth Bonner  
J.D. Briggs  
Joe H. Carson  
Joe Lynn Carson  
Ralph Casteel  
Bill Cline  
Charles Cosby  
Berry Ferguson  
H.D. Gound  
J.L. Hallford

Phil Keeter  
E.R. Kirkbride  
Sam O. Love  
Jerry Means  
Charles McFarland  
W. Neil Morton  
Tobe O'Neal  
W.B. Pemberton  
Jack Perry  
Larry Roberts  
Jack Smay  
Don Smothers

L.T. Spray  
Mack Starr  
Elgin Strahm  
Raymond Thompson  
Claude E. Todd  
Tom Todd  
William F. Todd  
Rex Toney  
Jimmie Varnell  
Marvin Wright Jr.  
Wade Zumwalt

### About the cover

Official photograph of Miss  
Nina Reagan who will be  
crowned queen of the 1974  
Strawberry Festival in Stil-

well on Saturday, May 11.  
The cover was made  
possible through the contri-  
bution of Stilwell Foods, Inc.

This page made possible through  
the contributions of the following:

FELTS FAMILY SHOE STORE  
Foot Wear for the Family

COX CIRCLE INN MOTEL  
774-7022—Downtown Stilwell

TANKERSLEY BROS PACKING CO  
Fort Smith, Arkansas

STILWELL LUMBER CO.  
774-7058—Building Supplies

LLOYD BREWER CITY FILLING STAT.  
"42 Years Continuous Service"

ANDERSON WHOLESALE CO.  
Muskogee, Oklahoma

## Program f

George Mack Johnson and

Parade . . . . .

National Anthem . . . . .

Invocation . . . . .  
The

Salute to the Flag . . . . .

Introduction of Distingui  
CH

Crowning of Strawberry

Welcoming Address . . . . .  
CH

Shrimp Fisher and His W

Strawberry Singers of St

Gospel Singing . . . . .  
Chieftains, Stilwell; Th

Awards to Champion Str

Strawberry Auction . . . . .

Al Shephard Western Ba

Free Servings of Strawb

IRA Rodeo, Wednesday,

Ozarks Electr  
"Consumer-C

# Program for May 11, 1974

**Neil Morton, Master of Ceremonies**

George Mack Johnson and His Western Band .....	9:00 a.m.
Parade .....	10:00 a.m.
Elgin Strahm, Parade Marshal	
National Anthem .....	11:00 a.m.
Patsy Lynn Morton	
Invocation .....	11:05 a.m.
The Rev. William Todd, First United Methodist Church	
Salute to the Flag .....	11:10 a.m.
Boy Scouts of America	
Introduction of Distinguished Guests .....	11:15 a.m.
Charles McFarland, President, Stilwell Kiwanis Club	
Crowning of Strawberry Festival Queen for 1974 .....	11:20 a.m.
Welcoming Address .....	11:30 a.m.
Charles McFarland, President, Stilwell Kiwanis Club	
Shrimp Fisher and His Western Band .....	11:35 a.m.
Strawberry Singers of Stilwell High School .....	12:45 p.m.
Gospel Singing .....	1:00 p.m.
Chieftains, Stilwell; The Singing Merits, Springdale, Ark.; The Einert Family, Clarksville, Ark.	
Awards to Champion Strawberry Growers .....	2:00 p.m.
Strawberry Auction .....	2:15 p.m.
Al Shephard Western Band .....	2:50 p.m.
Free Servings of Strawberries and Ice Cream .....	3:00 p.m.
IRA Rodeo, Wednesday, Thursday, Friday and Saturday, May 8-11 .....	8:30 p.m.
Sponsored by Stilwell Roundup Club	

**This page made possible through  
the contributions of the following:**

**Ozarks Electric Cooperative  
"Consumer-Owned Utility"**

**C.J. Carson  
Insurance Agency**

**"The Friendly"  
Bank of Commerce**





**Nanette Holt, left, Queen Nina Reagan, and Terri Presley**

## 1974 Queen and attendants

Miss Nina Reagan, 16, daughter of Mrs Amy Reagan, Route 1 Stilwell, was selected March 16 to reign as Queen of the 1974 Strawberry Festival in Stilwell.

Miss Reagan, a junior at Stilwell High School, will have Miss Nanette Holt and Miss Terri Presley as her attendants.

Miss Holt, first runnerup in the contest, is 18 and the daughter of Mr and Mrs Jack

Holt, Stilwell, and Miss Presley, 18, daughter of Mr and Mrs Bill Presley, Route 2 Stilwell, is second runnerup.

Ten Adair County girls competed for the Strawberry Festival Queen title. An estimated 500 persons attended the contest held in the E.G. McLemore Field House.

Out-of-county judges based their decision on personality, poise and beauty.

**This page made possible through  
the contributions of the following:**

**LLOYD AND PAT COLE**  
Hi, You-All

**THE OLD TRADING POST**  
Antiques and Junque

**STILWELL AUTO SUPPLY**  
Charles Hurlbut, Owner

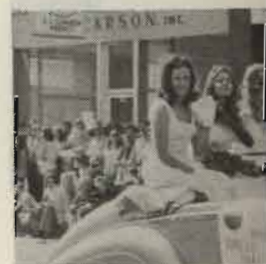
**FLETCHER'S HARDWARE**  
Phone 774-7500

**WORSHAM TRACTOR CO.**  
For Home & Power Needs

**DIXIE PACKAGING CO.**  
Little Rock, Arkansas



**Waiting for**



**Queen and a**

**Parade  
attract  
thou**

**Garrett  
and Olds**

**Griffin Con**  
General Contract



**Waiting for parade**



**Queen and attendants**



**SHS twirlers cavort**



**Tulsa U's Angel Flight**

## Parade attracts thousands

Perfect weather conditions prevailed in Stilwell last year for the 26th Strawberry Festival which attracted thousands from this four-state area.

Attendance was unofficially estimated at 17,000.

The Festival marked the third straight year that no rain fell.

Prize-winning floats in the commercial division were entered by Sav-U Foods, first; Bank of Commerce, second; and Stilwell Foods, Inc., third. The Future Farmers of America Chapter of Stilwell High School had the prize-winning float in the youth division.

The colorful one-hour procession included

**This page made possible through  
the contributions of the following:**

**Garrett Chevrolet  
and Olds Co., Inc.**

**J.R. Penick, Jr.  
Grower, Packer & Shipper Sweet Potatoes**

**Griffin Construction Co.  
General Contractors, Ft. Smith, Ark.**

**Piggly Wiggly  
& Speedy Mart**





Sav-U Foods' first prize float

19 bands, beautiful girls, notables, and 450 horses.

U.S. Rep. Clem McSpadden rode his horse in the parade and then climbed off at the band stand to take over duties as parade announcer.

Oklahoma Governor and Mrs David Hall failed to arrive in time for the parade, but were here for the last of the program and the strawberries and ice cream.

#### TRAVEL COUNTRY

Adair County is first-rate travel country, principally because you'll find us friendly and helpful and proud of our picture-book scenery and historical spots.



FFA tops in youth division

This page made possible through  
the contributions of the following:

ARKANSAS OFFICE EQUIPMENT CO.  
Fort Smith, Arkansas

H.C. SCHMIEDING PRODUCE CO., INC.  
Springdale, Arkansas

MEAD CONTAINERS, DIV. MEAD CORP.  
Fort Smith, Arkansas

ARKHOLA SAND & GRAVEL CO.  
Grade A Blocks—Fort Smith, Ark. & Muskogee

STILWELL READY MIX  
U.S. 59 North

LEO BELLER ATHLETIC GOODS CO.  
Muskogee, Oklahoma

KENNETH, JOE  
OTAS

MEANS F  
Jerry

STILW  
Welch

CALVERT-McE  
Fort S

1973  
Queen  
gets  
kisses

Miss Lydia Lewis  
Festival Queen, is ki  
governor of the Tex  
Kiwanis International,  
placed on her head. Th  
were Miss Nanette Ho  
Kathy Morris, Route 2



Kat

# 1973 Queen gets kissed

Miss Lydia Lewis, 1973 Strawberry Festival Queen, is kissed by C.T. Bush, governor of the Texas-Oklahoma district, Kiwanis International, after the crown was placed on her head. The queen's attendants were Miss Nanette Holt, Stilwell; and Miss Kathy Morris, Route 2 Proctor.



**Lydia busshed by C.T. Bush**



**Kathy Morris, Nanette Holt, the queen, and C.T. Bush**

**This page made possible through  
the contributions of the following:**

**KENNETH, JOHNNIE & KEN RAINS**  
OTASCO—Stilwell

**MEANS FURNITURE CO.**  
Jerry & Ann Means

**STILWELL CAFE**  
Welcome, Visitors

**CALVERT-McBRIDE PRINTING CO.**  
Fort Smith, Arkansas

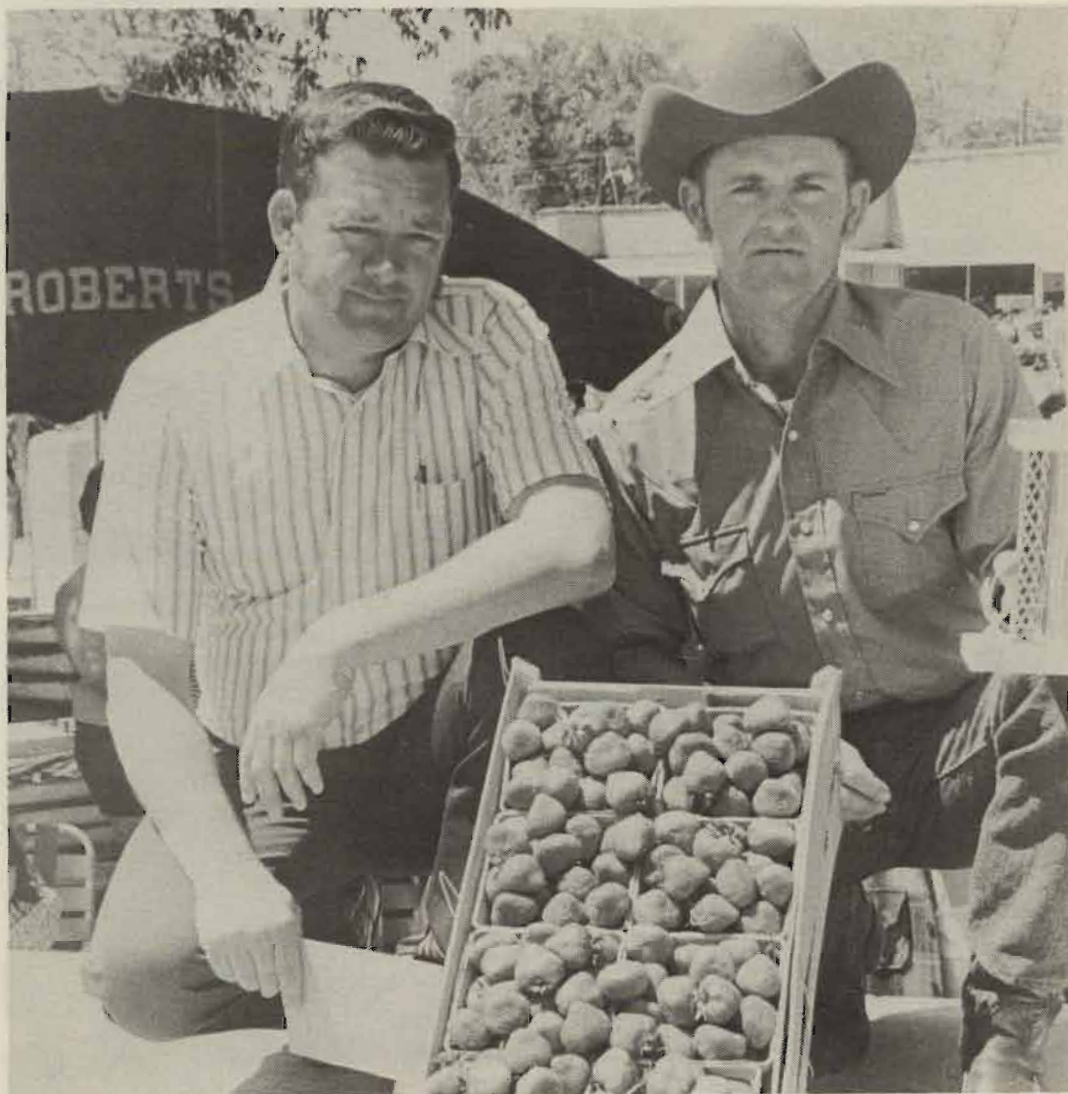
**STILWELL MERCANTILE**  
Burnell Isaacs, Mgr.

**DE JARNATT BROTHERS**  
Dirt Contractors

**U-SAVE MART**  
Bargains Everywhere You Look

**REASOR'S DISCOUNT FOODS**  
"We Sell for Less"





## Prize-winning berries

Harold Brannon, right, displays the prize-winning berries (Sunrise variety) grown by his brother, Gene Brannon, at the 1973 Strawberry Festival. At left is Eugene Eubanks who bought the championship crate for \$400 for Stilwell Foods, Inc.

This page made possible through the contributions of the following:

**SOUTHERN ICE COMPANY**  
Freezing & Storage—Muskogee

**PRESTON REFRIGERATION CO.**  
Fort Smith, Arkansas

**DIAMOND INTERNATIONAL CORP.**  
Heekin Can Div., Springdale, Ark.

**BERT'S 66 SERVICE STATION**  
Stilwell, Oklahoma

**FADLER COMPANY, INC.**  
Fresh Fruits, Vegetables, Frozen Foods

**EKCO PRODUCTS, INC.**  
Dallas, Texas



Berrie  
sold a  
auctio

Adair County grows  
the strawberry auction  
judging last year. Two  
auctioned.

Chemco F  
Tulsa,





**Auctioneer Jerry Means looking for higher bid**

## **Berries sold at auction**

Adair County growers received \$2,540 in the strawberry auction which followed the judging last year. Twenty-seven crates were auctioned.



**Bidders**

**This page made possible through  
the contributions of the following:**

**Chemco Products, Inc.  
Tulsa, Oklahoma**

**Chaffin Pharmacy  
Make This Your Hdqs.**

**Consolidated Industrial Equip. Co  
Fort Smith, Arkansas**



**Lining up for free strawberries and ice cream**

**This page made possible through  
the contributions of the following:**

**Foremost Milk  
A Perfectly Balanced Milk**

**Keystone Seed Company  
St. Louis, Missouri**

**T&H Starr Valley Angus Farms  
Canadian & Emulous Sires-Thornton & Harris**

**Aztec Building Supply  
Ph. 774-7093-Stilwell**



**Gov. and Mr**



**Well, nea**



**Bruce-Ro  
Fort Smith**





**Gov. and Mrs David Hall**



**A Texas visitor**



**Well, nearly everybody**

**Everybody  
loves  
strawberries**



**This page made possible through  
the contributions of the following:**

**Bruce-Rogers Company  
Fort Smith—Rogers, Ark.**

**Jim Hopkins Ford, Inc.  
Stilwell, Oklahoma**

**VIP Sales Company  
8185 E. 46th St., Tulsa, Ok. 74145**

# Trail of Tears ended here



Old Baptist Mission Church

The Old Baptist Mission Church, which stands three miles north of Westville on US 59, marks the end of The Trail of Tears, a long, sad journey for a nation exiled from its home east of the Mississippi River.

Across the highway from the church is a quiet little cemetery where lie the brave leaders of this band of Cherokees led by the Rev. Jesse Bushyhead.

An historical marker summarizes the history of the Old Baptist Mission in these words:

"Baptist Mission . . . Established by Rev. Jesse Bushyhead in 1839 and known as Bread Town by the Cherokees. Rev. Evan Jones was the missionary in charge. The Cherokee Messenger printed there, beginning in August, 1844, was first periodical in Oklahoma. Mission moved to Tahlequah in 1867. Bacone College at Muskogee, still in operation, is the outgrowth of the school at Baptist and Tahlequah."

A sign above the door of the church reads: "Moved over the Trail of Tears in 1835."

A nation forced at bayonet point to move to new lands could not forget its own civilization but brought with it all that was movable, including one of the churches.

According to the Grant Foreman papers, some four or five heavy log beams were transported to this spot and combined with native logs to build a replica of a church these Cherokees had been forced to leave in Georgia.

Much blood and many tears were shed along "The Trail of Tears." These hardships did not stop these men with the spirit of pioneers. They were determined to establish a school, village and homes protected by law as they knew it.

The end of the Trail of Tears, perhaps, but the beginning of a new and better era in the life of the Cherokee people.—by Lucy Jane Makoske

This page made possible through  
the contributions of the following:

Chamber of Commerce  
Stilwell

Stilwell  
Democrat-Journal

Container Corp. of America  
Corrugated Containers—Muskogee



## Flint Court Ho Replica

A replica of the original  
Court House was completed  
the sponsorship of the  
Cherokee Historical Society.

The log building, finished  
is located in the Dahlberg tract  
southwest of Stilwell.

Plans are to furnish  
furniture of the early  
attraction.

The local historical society  
from the Cherokee National  
tract where the building

The two-room building  
feet wide, features a full  
porch. The walls are  
hewn logs.

The original Flint District  
believed to be similar  
replica, was replaced by a  
frame structure.

CATRON  
Welcome to

DAY DIS  
Best Place

B.G. STEWART  
Candy—N

STILWELL  
NURSING





On original site

### *Flint Court House*

## Replica is completed

A replica of the original Flint District Court House was completed last fall under the sponsorship of the Adair County Cherokee Historical Society.

The log building, financed by state funds, is located in the Dahlongegah Community, southwest of Stilwell.

Plans are to furnish the building with furniture of the early 1800s as a tourist attraction.

The local historical society holds a deed from the Cherokee Nation for the 25-acre tract where the building is located.

The two-room building, 33 feet long and 21 feet wide, features a fireplace and a long porch. The walls are constructed of rough hewn logs.

The original Flint District Court House, believed to be similar in design to the replica, was replaced later with a two-story frame structure.

George Palmer, engineer with the plant management branch, bureau of Indian Affairs in Muskogee, served as architect on the project and also served as overseer of the construction. His services were without charge.

Palmer said he tried to make the building as authentic as possible and that it closely resembles typical structures built in Indian Territory more than 100 years ago.

Mrs Lucy Jane Makoske, president of the Adair County Cherokee Historical Society; District Judge E.G. Carroll, vice president; and Mrs Delisca Cox, secretary-treasurer, led the campaign to obtain funds for the court house replica and then saw the project through to its completion. Mack Starr was building committee chairman.

### **AIRPORT PLANNED**

A new airport is in the planning stages at a site near US 59 south of Stilwell.

**This page made possible through  
the contributions of the following:**

**CATRON'S STORE**  
Welcome to the Festival

**DAY DISCOUNT CO.**  
Best Place to Trade

**B.G. STEWART WHOLESALE**  
Candy—Notions—Drugs

**STILWELL**  
NURSING HOME

**TOM J. CARSON**  
Insurance Agency

**SAVE-WAY GROCERY**  
Buddy and Juanita

**ROBERTS FUNERAL HOME**  
Serving Adair Co. Since 1913

**COCA-COLA BOTTLING CO.**  
Of Fort Smith, Arkansas



Stilwell's Main Street

### Facts you should know

## About Stilwell

**Population** (1970 census)—City, 2,134; Adair County, 15,141.

**Labor force**—Male, 2,185; female, 792.

**Transportation**—Federal Highways 59 and 62; and State Highways 51 and 100. Interstate 40 is 30 miles south. The Kansas City Southern Railroad, six truck lines and a bus line serve the area. Stilwell also has a city airport with runways of 1,600 and 2,000

feet.

**Government**—Mayor-City Council. Active volunteer fire department with 19 members. Eight city police officers and three county officers. Two Oklahoma Highway Patrolmen are stationed here.

**Organizations**—Chamber of Commerce, Kiwanis, Garden Club, Roundup Club, Stilwell Study Club, Strawberry Capital

This page made possible through  
the contributions of the following:

Jones Truck Lines, Inc.  
Springdale, Arkansas

Compliments of  
Colonial Bread Co.

**Wal-Mart Discount City, Stilwell**

We really do sell for less. Thank you for shopping Wal-Mart



City swimmer

Square Dance Club, Veterans of Foreign Wars, Order of Eastern Star, Rebekah Lodge, Adair Horse Association, Adair men's Association.

**Industrial foundation**—Foundation, a non-profit, recently revitalized area. Land was purchased for industries.

**Recreation**—Water picnicking at nearby Lake, game and deer hunting. Area, north edge of Stilwell campers; city swimming, gymnasiums; movie theaters, courses in a 30-mile race.

The Stilwell Kiwanis, baseball and swimming, youngsters in this area.

**Communications**—Telephone company of Stilwell, dialing, touch tone telephones.

**Television reception**—Tulsa, Okla., and one in Stilwell.

**Special events**—Stilwell Dogwood and fall foliage, Adair County Fair.

**Health**—Thirty-six beds, Hospital, and Adair County

HERMAN  
Ok. Farm Bureau

ADAIR COUNTY LIVESTOCK  
We Appreciate

D-X  
Selan Hall,

STILWELL  
Flowers for





**City swimming pool**

Square Dance Club, American Legion, Veterans of Foreign Wars, Masonic Lodge, Order of Eastern Star, Oddfellows Lodge, Rebekah Lodge, Adair County Quarter Horse Association, Adair County Cattle-men's Association.

**Industrial foundation**—Stilwell Industrial Foundation, a non-profit organization, was recently revitalized and a 30-acre tract of land was purchased for prospective industries.

**Recreation**—Water sports, fishing and picnicking at nearby Lake Tenkiller; small game and deer hunting; Adair Recreation Area, north edge of Stilwell, equipped for campers; city swimming pool; two gymnasiums; movie theatre; and four golf courses in a 30-mile radius.

The Stilwell Kiwanis Club sponsors baseball and swimming programs for youngsters in this area.

**Communications** — Independently-owned telephone company offers direct distance dialing, touch tone and mobile dial telephones.

**Television reception**—Three stations in Tulsa, Okla., and one in Fort Smith, Ark.

**Special events**—Strawberry Festival, Dogwood and fall foliage tours, rodeos and Adair County Fair.

**Health**—Thirty-six bed Stilwell Municipal Hospital, and Adair County Health Building.

The city has one dentist, three M.D.'s an osteopath, two optometrists and a chiropractor. Two ambulance services operate in Stilwell area.

**Climate**—Average winter temperature is 37.4 degrees. Average summer temperature is 82.1. Rainfall averages 42.46 inches per year. Stilwell's elevation above sea level is 1,112 feet.

**Education**—One elementary school, one junior high and one high school. Adair County Branch, Indian Capital Area Vocational-Technical School, is located at north edge of Stilwell. John Brown University, Siloam Springs, Ark., is 30 miles away; University of Arkansas, Fayetteville, 50 miles; and Northeastern State College, Tahlequah, 25 miles.

**Industrial sites available**—Thirty acres, located ¼ mile north of city limits on the Kansas City Southern Railroad right-of-way, was recently purchased by the Stilwell Industrial Foundation for prospective industries. Other land on the railroad and one or more highways is also available for industry.

The Cherokee Tribe is developing an industrial park just south of Stilwell on US 59 with the aid of a government grant.

**Prevailing wage scale**—U.S. minimum wage and hour law prevails.

**Major industries**—Stilwell Foods, Inc.,



**Low-rent housing**

**This page made possible through  
the contributions of the following:**

**HERMAN JONES**  
Ok. Farm Bureau Mutual Ins. Co.

**ROCK'S IRON & METAL CO.**  
Scrap, New and Used Iron

**ADAIR COUNTY LIVESTOCK AUCTION, INC.**  
We Appreciate Your Business

**REX'S HOUSE**  
of BARGAINS

**D-X AGENCY**  
Selan Hall, Howard Johnson

**THOMAS CLEAN CLEANERS**  
You-All Come to See Us

**STILWELL FLOWER SHOP**  
Flowers for All Occasions

**BACK HOE & DUMP TRUCK SERVICE**  
Roy Roberts



**Adair County branch, Indian Capital Area Vo-Tech School**

Cherokee Nation Industries, Inc., Adair County Orchard Co., and Ideal Fruit Farm.

**Motels and Restaurants**—Three motels with 56 units. Numerous good eating places.

**Water and sewer system**—Stilwell has an abundance of clean, pure water—4,000,000 gallons per day—from 140-acre city lake. The lake is large enough to serve Stilwell for three years without a drop of rain falling. Present sewer system is large enough to accommodate a city of 10,000. A \$500,000 industrial sewer system, which can handle 2,000,000 gallons of industrial wastes daily, was completed recently.

**Electrical power**—The City owns its own electrical distribution system, and gets its own power from the Grand River Dam Authority. Special industrial rates are offered. Present capacity of 5,000 KW could easily be enlarged. Ozarks Electric Cooperative serves the rural areas.

**Banking**—Bank of Commerce has total capital and reserves of \$986,705.05, with \$10,464,530.76 in deposits and total assets of \$11,690,522.28.

**Indian Industrial Development Assistance**—The Bureau of Indian Affairs, in cooperation with Oklahoma employee

service agencies, will assist industry in recruitment of qualified applicants to meet personnel staffing requirements.

With the Arkansas River only about 30 miles away, Adair County is looking hopefully for an industrial boom now that the Arkansas and Verdigris Rivers are opened to navigation.

Industries interested in this area are invited to write Tobe O'Neal, president of the Stilwell Chamber of Commerce.



**Stilwell State Park**

**This page made possible through  
the contributions of the following:**

KIM PAPER SUPPLY CO.  
Ralph & Glendola Casteel

WESTERN AUTO  
Earl and Jack Smay

HUNTER'S 5 and 10  
Clifton and Christine Hunter

MAYTAG AUTOMATIC LAUNDRY  
Gene and Eula Cranford

L.R. WEBB, 774-2854, 774-7327  
Order Buyer, Stocker & Feeder Cattle

FARMERS PRODUCE AND MILL  
Feed — Seed — Fertilizer

V.E. VANDERHEIDEN AUTOMOTIVE  
319 S. 2nd — Wholesale & Retail

MAXINE'S FABRICS  
Welcome to Our Festival

BARNES PEMBERTON  
Welcome, Visitors

SCRUGGS  
Radio and Television

FARMERS SUPPLY CO.  
Home of the Farmers' Needs

ISAACS' CONOCO STATION  
Stilwell, Oklahoma

PEGGY'S FLOWERS  
"Flowers for All Occasions"

STILWELL FFA CHAPTER  
Welcomes You to the Festival

STOCKMAN FEED & SUPPLY  
Stilwell, Oklahoma

STILWELL  
RADIATOR SHOP



**CNIS new head**



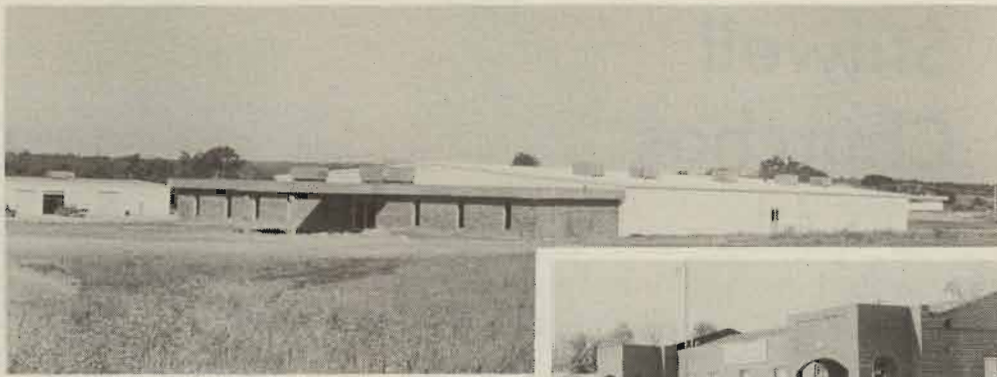
**Tahlequa**

**The Ol**



**Branc  
Hwy. 62 South**





**CNT's new headquarters plant at Stilwell**

**Where it all started**

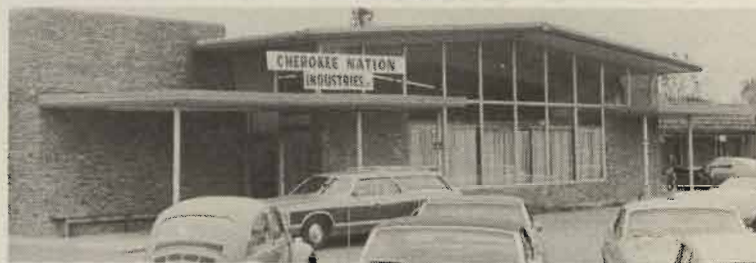


**Tahlequah—**

**The New**

**Tahlequah—**

**The Old**



**Wafer Assembly**

**This page made possible through  
the contributions of the following:**

**Cherokee Nation Industries, Inc  
Main Offices & Plant, Hwy. 51 West  
Stilwell, Oklahoma**

**Branch Operation  
Hwy. 62 South, Tahlequah, Okla.**

**Manufacturing & Assembling  
Electronic Parts & Products**

# Stilwell Churches

Most religious faiths are represented in the immediate Stilwell area.

Other denominations have churches in communities surrounding Stilwell.

The local churches are:

Assembly of God Church

Central Baptist Church

Church of Christ

First Baptist Church

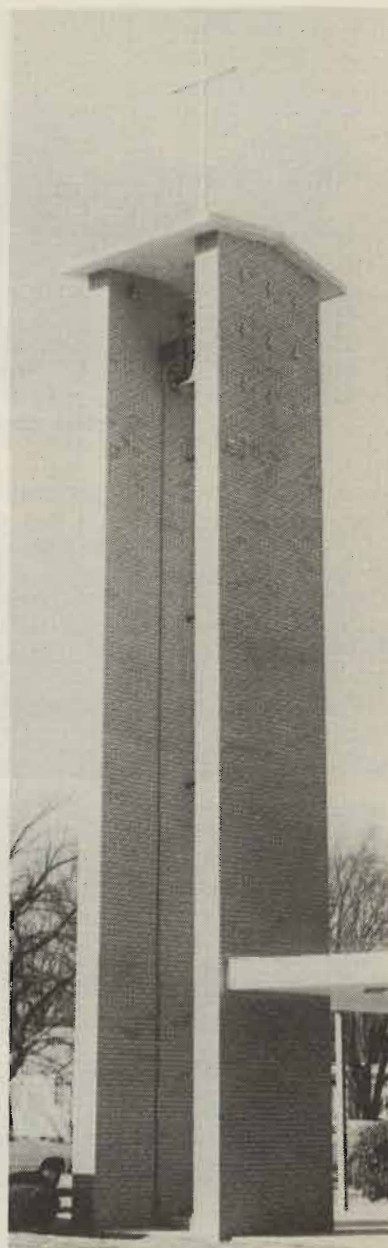
First Christian Church

First United Methodist Church

Free Holiness Church

United Methodist Indian Church

Pentecostal Holiness



**This page made possible through  
the contributions of the following:**

KUYKENDALL'S DRY GOODS  
Welcome to the Festival

GLEN ROBBINS  
Electrical Wiring and Supplies

STILWELL PHARMACY  
Reasonable Prices

ISAACS' GROCERY & FEED  
S.L. and Wilma Isaacs

MARTIN'S AUTO REPAIR  
Phone 774-7742—Stilwell

WORSHAM'S CARDINAL  
Food Store

COLEMAN DAIRY CUP  
Clyde and Mae Jean

DELMAR AUFFET  
Fruit Farm, Nursery, Fruit Stand

WATERS REAL ESTATE  
& Appraisal Service, Stilwell

PATTERSON'S GARAGE  
General Auto Repair

L.R. WEBB 774-2854, 774-7327  
Stocker and Feeder Cattle

CORNSILK'S APCO  
Stilwell, Oklahoma

RONNY'S GROCERY  
(Formerly Pearl's)

CAVINNESS SERVICE STATION  
"Your Business Appreciated"

B-C GENERATOR  
& Starter Rebuilder

DOSS STILWELL  
Grocery and Market



## Agriculture Divers

It's from A to Z (a) fruits and vegetables in Adair County.

Agriculture is big

In the past 50 years livestock products have been a source of agriculture in Adair County.

Adair County products, berries, green beans, are sold all over the world, processed locally, when fresh.

Stilwell is the home which has nationwide

STILWELL  
RCA, Ke

IGA WARE  
Dale &

JIM C. and  
Welce





**A growing industry**

## **Agriculture**

# **Diversified, mechanized**

It's from A to Z (apples to zucchini) for fruits and vegetables grown and processed in Adair County.

Agriculture is big business here.

In the past 50 years, sale of livestock and livestock products has been the principal source of agriculture income in Adair County.

Adair County products—including strawberries, green beans, apples and peaches—are sold all over the Nation. Some are processed locally, while others are shipped fresh.

Stilwell is the home of Stilwell Foods, Inc., which has nationwide distribution; the Adair

County Orchard Co. which is the largest in this four-state region; and the Ideal Fruit Farm.

Corn, small grain, grain sorghums and improved grasses and legumes for hay are grown mostly as feed for livestock. Timber is regarded as an important cash income.

Several poultry processing plants also flourish in this area.

## **LAND FOR INDUSTRY**

A 30-acre tract of land for prospective industries was recently purchased by the revitalized Stilwell Industrial Foundation.

**This page made possible through  
the contributions of the following:**

**STILWELL APPLIANCE**  
RCA, Kelvinator Dealer

**IGA WAREHOUSE MARKET**  
Dale & Mary Rowan

**JIM C. and BETTY DAWSON**  
Welcome, Visitors

**THE JACK RIDERS**  
Welcome, Visitors

**DOY'S SERVICE STATION**  
Stilwell, Oklahoma

**SWEDE'S GROCERY,**  
Market & Fabric Shop

**GREEN COUNTRY MOTORS**  
Raymond Thompson

## Using strawberries

# Favorite recipes

Here are a few favorite strawberry recipes submitted by members of the Adair County Extension Homemakers organization:

### STRAWBERRY SALAD

(Mrs Gillis Deweese)

1 box strawberry-banana Jello  
1 cup boiling water  
Mix and cool.  
Add:  
1 small can drained crushed pineapple  
1 small pkg. frozen strawberries (juice and berries)  
1 mashed banana (ripe)  
Take 1/2 of mixture and put in dish; let jell. Spread on carton of sour cream. Put remaining Jello mixture on top of cream. Let set.

### STRAWBERRY PIE

(Mrs Donald Vaughan)

Beat together:  
1 (3 oz.) pkg. cream cheese  
3 tbsp sour cream  
Place in baked pie crust. Chill in refrigerator while making filling.  
Strawberry filling:  
1 pt. box strawberries  
1/2 - 3/4 cup sugar  
3 tbsp. cornstarch  
Red food coloring, if desired  
Combine sugar and cornstarch together and then add strawberries and juice. Cook until thickened. Cool and pour over cream cheese mixture. Chill in refrigerator two hours.

### STRAWBERRY FLOAT

(Mrs Dale Kirk)

3 (3 oz.) pkgs. strawberry Jello  
4 cups boiling water  
1 1/2 cups sugar  
4 cups cold water  
1/2 cup lime juice

2 1/4 cups orange juice  
1 tbsp orange extract  
1 1/4 cup lemon juice  
1 tbsp lemon extract  
1 qt ginger ale  
2 (10 oz.) pkg. frozen strawberries.

Dissolve Jello in boiling water; add sugar, cold water, extracts, and juices. Cool. Do NOT let it congeal. If it does congeal, beat just enough to bring back to liquid state.

When time to serve, pour punch into punch bowl and add ginger ale. Stir until strawberries break apart and are partially thawed.

### OLD FASHIONED STRAWBERRY PRESERVES

4 cups strawberries  
4 level cups sugar  
1 Tablespoon vinegar

Carefully wash berries. Do not crush. Add sugar and vinegar. Cook over a slow heat until sugar is melted. After boiling starts, cook 20 minutes. Pour in a large crock and let stand 24 hours. Stir occasionally. Seal cold.

### STRAWBERRY ICE CREAM

1 1/2 quarts strawberries  
1 1/2 cups sugar  
2 cups half & half cream  
1 to 2 tablespoons lemon juice  
1/4 teaspoon salt

Wash and cap berries. Chop, cover with sugar and let stand in cold place from 2-3 hours. Press the sweetened fruit through a colander. Add the cream, lemon juice, salt and freeze. Use a freezing mixture of 1 part salt and 4-6 parts ice. Turn the crank of the freezer slowly. After freezing, remove the dasher, pack the freezer with more ice and salt and let the cream stand for an hour or more to ripen in flavor.

### SECOND SATURDAY

The Stilwell Strawberry Festival is held the second Saturday of May each year.

This page made possible through  
the contributions of the following:

EAGLE THEATRE  
Bargain Entertainment

STILWELL BUTANE CO.  
Welcome to the Festival

BALLENTINE PRODUCE, INC.  
Alma, Arkansas

SHAWNEE MILLING CO.  
Good Millers Since 1906

CARNATION CO., CAN DIVISION  
Mt. Vernon, Missouri

KELLEY'S DEPARTMENT STORE  
Welcome to Adair County

REED'S HARDWARE & FURNITURE  
Sarah—Quentin—Gene

AFCO METALS, INCORPORATED  
3115 S. Zero St., Ft. Smith, Ark.

It's fun for  
Many

Hundreds of people, workers, students, each year to help crop in Adair County. Only about 450 acres in Adair County, Oklahoma's biggest strawberry crop. The strawberry County's biggest crop is its most glamorous. Strawberries n



Getting

annually in the county. A good picker can pick 100 boxes in a six-hour day. The average of from 10 to 15 years, the grower can pick 100 cents per box.

Seventy-three pickers in 1969 picked 250 c. one of the best days

Kelley Ca  
Prairie G



*It's fun for some*

## Many pick strawberries

Hundreds of people, including migrant workers, students and housewives, jump in each year to help harvest the strawberry crop in Adair County.

Only about 450 acres are in strawberries in Adair County, but this county is still Oklahoma's biggest producer.

The strawberry is, by no means, Adair County's biggest crop, but it most certainly is its most glamorous crop.

Strawberries mean \$500,000 or more



**Getting paid off**

annually in the county's economy.

A good picker can pick about 100 quart boxes in a six-hour day. He receives an average of from 10 to 12 cents a box. In good years, the grower can clear as much as 12½ cents per box.

Seventy-three pickers working in a patch in 1969 picked 250 crates from 2½ acres for one of the best days on record anywhere in



**Different postures**

the county.

The experienced pickers use a variety of positions. Some stoop, others squat, kneel or sit. Those who sit say they remain seated and scoot from one plant to the next. Scooting on rocky soil, however, is hard on pants.

Local strawberry growers like the Blakemore variety best.

A new variety, Sunrise, is gaining favor among strawberry growers. A crate of Sunrise berries, in fact, carried off top honors in the judging at the 1973 Festival.

The strawberry season is short, starting early in May and ending about June 1.

Thousands of pounds of berries are sold to Stilwell Foods, Inc., to be frozen and packed. The remainder is sold at Stilwell area markets, and to retail outlets (mostly chain stores) in Tulsa, Muskogee, Fort Smith, Ark., and other cities.

**This page made possible through  
the contributions of the following:**

Kelley Canning Co., Inc.  
Prairie Grove, Arkansas

Colborne Mfg. Co.  
Food Machinery—Glenview, Ill.

Ferry Morse Seed Company  
Memphis, Tennessee



Make headquarters here

## All roads lead to Stilwell

Make Stilwell your headquarters while  
visiting points of interest within easy

traveling distance in all four directions.

This page made possible through  
the contributions of the following:

Kansas City  
Southern Lines

Leon C. Osborn Co., Inc.  
Springdale, Arkansas

AAA ABS  
Frank Gar  
McSPADDE

Stilwell Municipal Hospital & Staff  
Welcome You to the Festival

GENERAL IND  
Muske

This  
'Gre  
Cou

Come to the "Gr  
spectacular vistas at  
Valleys, tree-cover  
ed water fun.



Dogwood



# This is 'Green Country'



**Lake Tenkiller**

Come to the "Green Country" and enjoy spectacular vistas at every turn.

Valleys, tree-covered mountains, unlimited water fun.



**Dogwood abounds**

Come, enjoy it all—the best of Oklahoma, crowded with color, a wide variety of things to see and do. Visit colorful and historic nearby communities, enjoy the mountains, sun, swim, fish, play golf, enjoy water sports. All this and more in highly agreeable climate.

The Illinois River, which winds its way through Adair County, is one of the most beautiful streams anywhere.

Beautiful Lake Tenkiller, located just a few minutes' drive west of Stilwell, is among the major attractions in this area.

Tenkiller Ferry Dam, which impounds water forming Lake Tenkiller, is located on the Illinois River near Gore. It was built by the Corps of Engineers in 1953 at a cost of \$23,822,000, principally for flood control, navigation and production of hydro-electric power.

## **COLORFUL LANDMARK**

Golda's Old Mill, located at Bitting Springs off US 51 west of Stilwell, is over 100 years old. The water wheel still provides the power for grinding corn, just as it did for the Indians and the settlers.

**This page made possible through  
the contributions of the following:**

**AAA ABSTRACT CO., INC.**  
Frank Garrett, Mgr., Stilwell

**McSPADDEN HOME SERVICE**

**GENERAL INDUSTRIAL SUPPLY, INC.**  
Muskogee, Oklahoma

**CAINS COFFEE COMPANY**  
Hotel & Restaurant Blended Coffee

**PEPSI COLA**  
"Join the Pepsi People Feeling Free"

**WONDER BREAD**  
Fayetteville, Arkansas

**ALTON COUNCIL BROKERAGE CO.**  
Food Brokers—Ft. Smith, Arkansas



Carnation Ice Cream

is being furnished for the

Twenty-Seventh Annual Strawberry Festival

through courtesy of

Stilwell Cafe  
Worsham Grocery  
Buzzard's Grocery  
Saveway Grocery  
Isaacs' Grocery  
Doss Stilwell Grocery  
Philpott Grocery  
Speedy Mart  
Piggly Wiggly  
Cliff's Drive-In  
A&R Grocery

Ronnie's Grocery  
Stilwell Municipal Hospital  
Doc Beene's Restaurant  
Swede's Food Market  
Claude King Grocery  
George's Fruit Market  
Marie's Grocery  
Luther's Grocery  
Stilwell Foods Cafeteria  
Boyd and Jen's Drive-In  
Dunn's Fruit Market

Ritchie's Grocery

*"For Contented Families"*