

26th Annual

Strawberry Festival

Stilwell, Oklahoma

May 12, 1973



Queen Lydia Lewis

Stilwell history

Once a red haw thicket

Between two low-lying foothills of the Ozarks, lies the greatest little town on earth, Stilwell. These two foothills, worn down by the hand of time, still rock-ribbed and majestic, lie like lion's paws to protect this town with such an interesting history.

Stilwell, of course, was named for Arthur Stilwell, the man who built the Kansas City Southern Railway and served as its president.

Inherits Flair

He had envisioned the railroad line for years after having acquired a flair for railroading from his grandfather, Hamblin Stilwell, who had been one of the founders of the New York Central, as well as a builder of the Erie Canal.

The hill east of town (where the cross stands) is known as the Davis Mountain, named after the grand old man, Uncle Kenny Davis, who lived in a log cabin on its top for so long. He now lies buried within its shadow east of the mountain. This was a mecca for young people on Sunday afternoon when they could walk from town across the hill to the Davis Cave and spring east of the mountain.

In 1895, when the Kansas City Southern Railway bought a right-of-way from Mrs. Martha Johnson and Mrs. Elizabeth Freeman, the present site of Stilwell was a red haw thicket interspersed with persimmon trees. Very soon lots were offered for sale and a town plat laid out.

Street Had Everything

Front Street (which parallels the railroad tracks) had everything in the early days. The street consisted of a few grocery stores, one or two mercantile stores, a drug store and several restaurants. The residences were within a radius of about a block around the town. The business district later expanded to Division and other streets.

Yes, there were board walks, covered over and supported by posts. The streets



Dancers at Tsa-La-Gi

were lighted by kerosene lanterns hung on these posts. Between these same posts were boards which were originally intended for hitching racks but were occupied by the town's loafers.

Long Trip

In the early days of Stilwell, a trip by wagon to Evansville, Arkansas—nine miles by highway today—took all day. As means of travel became more modern, one might get to the college at Tahlequah—24 miles now—by spending the day on the road.

A passenger could leave Stilwell at 5 a.m. on the Kansas City Southern, get off in Westville, walk across town to the Frisco depot where he could board a Frisco motor (a one-car train) later in the morning, and get to Tahlequah about the middle of the afternoon.—By Mrs. Lucy Jane Makoske.

ABOUT THE COVER

Official photograph of Miss Lydia Lewis who will be crowned queen of the 1973 Strawberry Festival in Stilwell on Saturday, May 12.

The cover was made possible through the contribution of Stilwell Foods, Inc.

**This page made possible through
the contributions of the following:**

FELTS FAMILY SHOE STORE
Wear for the Family

COX CIRCLE INN MOTEL
774-7022—Downtown Stilwell

CONSOLIDATED MARKETING, INC.
Shreveport, Louisiana

STILWELL LUMBER CO.
774-7058—Building Supplies

LLOYD BREWER CITY FILLING STAT.
"41 Years Continuous Service"

PROCESSING UNLIMITED, INC.
Stilwell, Oklahoma

Howdy

This is the 26th annual president of the Stilwell K the entire membership welcome to each of you.

It is the feeling of the Club that it is a distinct pr an event that means so m community.

The membership of the small and, therefore, ea serve on more than However, with triple effor

Larry
Pre

Hom
Vice

Joe H
Past Lieute

Larry Adair
Bob Baker
Scott Bread
J.D. Briggs
Ralph Casteel
Bill Cline
Charles Cosby
Burl Doyle
J.B. Goode
H.D. Gound
Norvell Henley

Ozarks Electric C
"Consumer-Own

Howdy and welcome!

This is the 26th annual Festival and, as president of the Stilwell Kiwanis Club, I join the entire membership in extending a welcome to each of you.

It is the feeling of the Stilwell Kiwanis Club that it is a distinct privilege to sponsor an event that means so much to our entire community.

The membership of the Kiwanis Club is small and, therefore, each member must serve on more than one committee. However, with triple effort on our part, this

Festival could never be a success without the cooperation and good-will of the businessmen, farmers and other citizens of the entire county. We appreciate them and their work.

We hope our efforts have produced for you a Festival you will enjoy, remember and wish to visit again.

Larry Roberts,
President,
Stilwell Kiwanis Club



Kiwanis Club officers

Larry Roberts
President

Jack Perry
Past President

Homer Dunn
Vice President

Berry A. Ferguson
Secretary-Treasurer

Joe H. Carson
Past Lieutenant-Governor

W. Neil Morton
Past Lieutenant-Governor

Other Kiwanis Club members

Larry Adair
Bob Baker
Scott Bread
J.D. Briggs
Ralph Casteel
Bill Cline
Charles Cosby
Burl Doyle
J.B. Goode
H.D. Gound
Norvell Henley

J.L. Hallford
Wesley Holley
Burnell Isaacs
Phil Keeter
Sam O. Love
Jerry Means
Dewey Moss
Charles McFarland
Burl Nye
Tobe O'Neal
W.B. Pemberton
Jack Smay

Don Smothers
L.T. Spray
Mack Starr
Elgin Strahm
Clint Thomas
Julius Thomas
Claude E. Todd
William F. Todd
Jimmie Varnell
Lincoln York
Wade Zumwalt

**This page made possible through
the contributions of the following:**

Ozarks Electric Cooperative
"Consumer-Owned Utility"

C.J. Carson
Insurance Agency

"The Friendly"
Bank of Commerce

Program for May 12, 1973

Neil Morton, Master of Ceremonies

George Mack Johnson and His Western Band	9:00 a.m.
Parade	10:00 a.m.
Jack Perry, Parade Marshal	
National Anthem	11:00 a.m.
Larry Eubanks	
Invocation	11:03 a.m.
The Rev. William Todd, First United Methodist Church	
Salute to the Flag	11:05 a.m.
Boy Scouts of America	
Introduction of Distinguished Guests	11:07 a.m.
Neil Morton	
Crowning of Strawberry Queen for 1973	11:15 a.m.
C.T. Bush, Governor, Texas-Oklahoma District Kiwanis International	
Presentation of Scholarship to Queen	11:25 a.m.
Dr. Robert Collier, President, Northeastern State College	
Welcoming Address	11:30 a.m.
Larry Roberts, President, Stilwell Kiwanis Club	
Shrimp Fisher and His Western Band	11:35 a.m.
Introduction of Former Queens	12:40 p.m.
The Ozark Express, bluegrass music	12:45 p.m.
Soloists from the Strawberry Singers of Stilwell High School	1:40 p.m.
Mrs. Neil Morton, Director	
Awards to Champion Strawberry Growers	2:00 p.m.
Strawberry Auction	2:15 p.m.
Charlie Ross and His Band	2:50 p.m.
Free Servings of Strawberries and Ice Cream	3:00 p.m.
IRA Rodeo, Wednesday, Thursday, Friday and Saturday, May 9-12	8:00 p.m.
Sponsored by Stilwell Roundup Club	

This page made possible through
the contributions of the following:

Lloyd and Pat Cole
Hi, You-All

The Old Trading Post
Antiques and Junque

Stilwell Auto Supply
Charles Hurlbut, Owner

Fletcher's Hardware
Phone 774-7500

Worsham Tractor Co.
For Home & Power Needs



Queen Lydia Lewis

Royalty for 1973

Corona

Miss Lydia Lewis, 17, of Stilwell High School, will be crowned Queen of the 1973 Strawberry Festival on Saturday, May 12.

Miss Lewis, daughter of Mr. and Mrs. J. H. Lewis, was chosen in March from among nine other Adair County girls.

She will succeed Miss Lydia Lewis, daughter of Mr. and Mrs. J. H. Lewis, who was crowned in 1972.

Miss Lewis' attendant will be Miss Lydia Holt, 17, daughter of Mr. and Mrs. J. H. Holt, Stilwell, first runner-up.

Garrett C. and Olds



Queen Lydia Lewis and attendants, Nanette Holt, left, and Kathie Morris

Royalty for 1973

Coronation part of big day

Miss Lydia Lewis, 16, a sophomore at Stilwell High School, will be crowned queen of the 1973 Strawberry Festival here Saturday, May 12.

Miss Lewis, daughter of Billy Joe Lewis, was chosen in March in competition with nine other Adair County girls.

She will succeed Kathy Rosebeary, daughter of Mr and Mrs L.A. Rosebeary, Route 1 Watts, the 1972 Queen.

Miss Lewis' attendants are Miss Nanette Holt, 17, daughter of Mr. and Mrs. Jack Holt, Stilwell, first runnerup; and Miss

Kathie Marie Morris, 17, daughter of Mr. and Mrs. Jess Morris, Route 2 Proctor.

Other contest finalists were Miss Vivian Brown, daughter of Mr. and Mrs. Bill E.R. Brown, Route 1 Stilwell; and Miss Bonnie Humphrey, daughter of Mr. and Mrs. Louis V. Humphrey, Route 2 Westville.

A crowd estimated at more than 450 attended the queen contest held in the E.G. McLemore Field House. Six out-of-county judges selected the queen on the basis of beauty, poise and personality.

**This page made possible through
the contributions of the following:**

**Garrett Chevrolet
and Olds Co., Inc.**

**Anonymous
Contributor**

**Sav-U Foods &
Speedy Mart**



Prize-winning float entered by Stilwell Foods, Inc.

Indians in full
regalia attract
attention in
Festival parade.

At 1972 Festival

More records fall

More records fell at the 1972 Strawberry Festival when an estimated 20,000 persons turned out for the 25th annual event under sunny skies.

Among the records: largest crowd in the history of the Festival, largest amount (\$400) paid at auction for the winning crate of strawberries, and most horses, mules and ponies (427) in the parade.

The Festival also marked the first time that the governor of Oklahoma had attended the event two years in a row, and the first time, ever, that the Texas-Oklahoma governor of Kiwanis International was in

attendance.

For the second year in a row, not a single drop of rain fell during the day.

EASY TO LIVE WITH

Stilwell's weather is unusually easy to live with, principally because it's 1,112 feet above sea level, located in the foothills of the Ozark Mountains. All this adds up to mild winters and cool summer nights, and year-round outdoor sports. Stilwell's great climate makes its own important contribution to the friendly people you'll find here.

This page made possible through
the contributions of the following:

ARKANSAS OFFICE EQUIPMENT CO.
Fort Smith, Arkansas

H.C. SCHMIEDING PRODUCE CO., INC.
Springdale, Arkansas

MEAD CONTAINERS, DIV. MEAD CORP.
Fort Smith, Arkansas

ARKHOLA SAND & Gravel Co.
Grade A Blocks—Fort Gibson

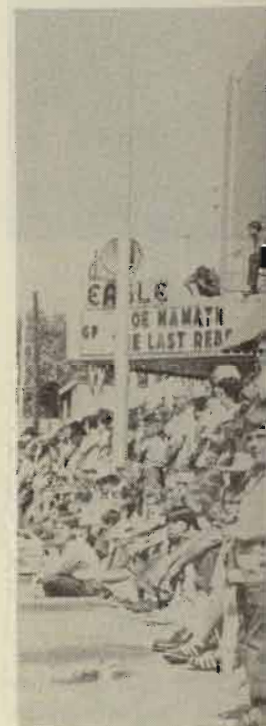
STILWELL READY MIX
U.S. 59 North

LEO BELLER ATHLETIC GOODS CO.
Muskogee, Oklahoma

KENNETH, JOHN
OTASCO-

MEANS FURN
Jerry & A

STILWEL
Welcome,



Indians in full
regalia attract
attention in
Festival parade.



Parade watchers

This page made possible through
the contributions of the following:

KENNETH, JOHNNIE & KEN RAINS
OTASCO—Stilwell

MEANS FURNITURE CO.
Jerry & Ann Means

STILWELL CAFE
Welcome, Visitors

STILWELL MERCANTILE
Burnell Isaacs, Mgr.

DE JARNATT BROTHERS
Dirt Contractors

U-SAVE MART
Bargains Everywhere You Look



Queen Kathy Rosebeary crowned by Kiwanis Gov. Robert Holt

Kathy Rosebeary

Queen receives crown

Miss Kathy Rosebeary, Queen of the 1972 Strawberry Festival, was crowned by Robert Holt, Dallas, Tex., governor of the Texas-Oklahoma District, Kiwanis International.

Miss Rosebeary, daughter of Mr. and Mrs. L.A. Rosebeary, was valedictorian of the 1972 graduating class of Watts High School.

The Queen was attended by Miss Kathy Paden, daughter of Mr. and Mrs. J.C. Paden, Stilwell, first runnerup; and Miss Terri

Presley, daughter of Mr. and Mrs. Bill Presley, Route 2 Stilwell.

The coronation ceremony took place on a platform on the lawn of the Adair County Court House following the parade.

Miss Rosebeary, who is a housewife now, won the competition in 1972 over 12 other Adair County girls. She had succeeded Miss Donna Padgett, daughter of Mr. and Mrs. Jimmie Padgett, Route 3 Stilwell.

**This page made possible through
the contributions of the following:**

SOUTHERN ICE COMPANY
Freezing & Storage—Muskogee

PRESTON REFRIGERATION CO.
Fort Smith, Arkansas

DIAMOND INTERNATIONAL CORP.
Heekin Can Div., Springdale, Ark.

BERT'S 66 SERVICE STATION
Stilwell, Oklahoma

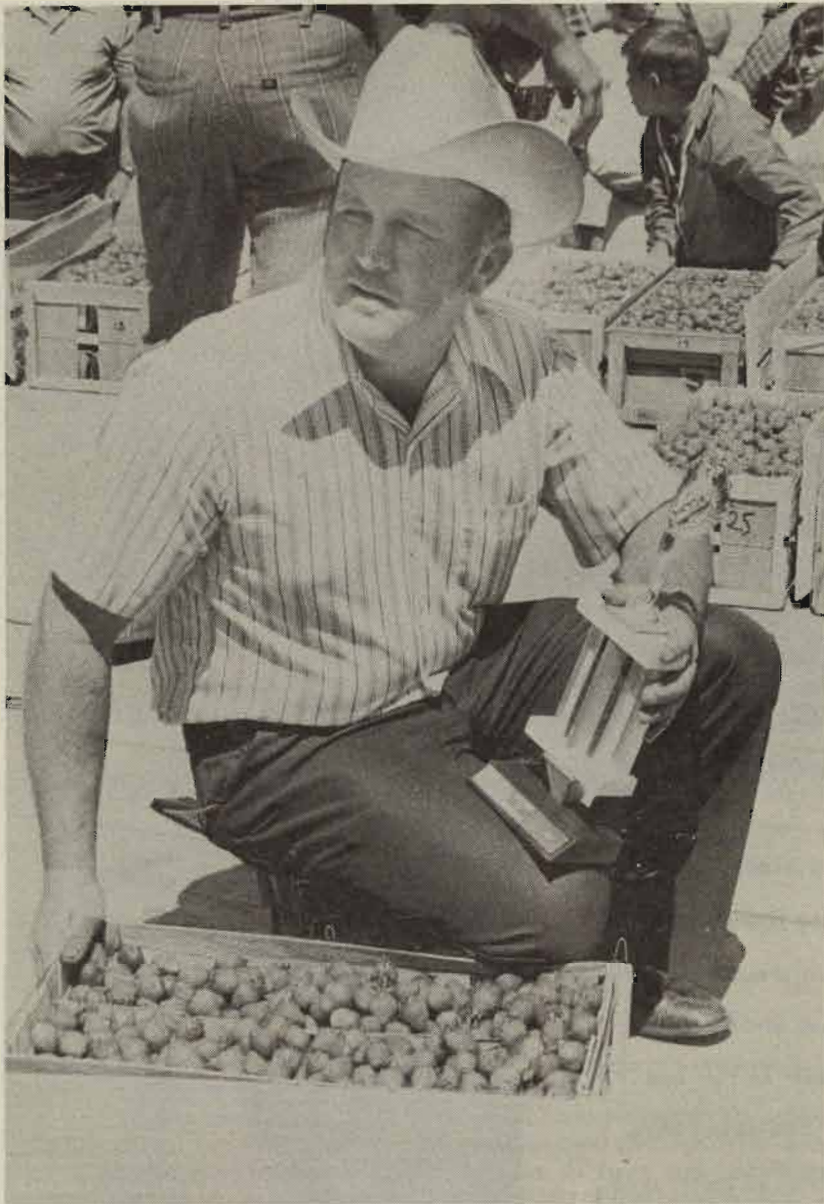
ARST EQUIPMENT COMPANY
Clark Fork Lifts—Tulsa

FADLER COMPANY, INC.
Fresh Fruits, Vegetables, Frozen Foods



Leonard
second year
crate brought
Stilwell Food

Asgrow S
subsidiary of The



Leonard Baird, who won first prize for his Blakemore berries for the second year in a row, displays the winning crate and trophy. His 16-quart crate brought a record \$400 at the auction. The winning bid came from Stilwell Foods, Inc.

This page made possible through
the contributions of the following:

Asgrow Seed Company
subsidiary of The Upjohn Company

Chaffin Pharmacy
Make This Your Hdqs.

Consolidated Industrial Equip. Co.
Fort Smith, Arkansas



Crowd stands in line, top, for free strawberries and ice cream. At right in same picture, they eat their berries and visit. Two young boys, in picture at right, savor every bite.



This page made possible through the contributions of the following:

Foremost Milk
A Perfectly Balanced Milk

T&H Starr Valley Angus Farms
Canadian & Emulous Sires - Thornton & Harris

Keystone Seed Company
St. Louis, Missouri

Aztec Building Supply
Ph. 774-7093—Stilwell



One

Follow berries Parachute

The serving of strawberries was followed by a parade. The Festival—parachute jumpers, Fort Riley, Kan., came to a conclusion with a performance of the Stilwell IRA-approved rodeo.

During the day, the m

KIM'S JANITOR
Stilwell, Ok

MAYTAG AUTOMOBILES
Gene and Eula

V.E. VANDERHEIDEN
319 S. 2nd—Whole

SCRUGG
Radio and Te

PEGGY'S FLOWERS
"Flowers for All"

SMAY HOME & A
Welcome, V



One of the serving lines where everyone gets his share

Follow berries

Parachutists perform

The serving of strawberries and ice cream was followed by a new feature of the Festival—parachute jumping by the Black Knights, a precision parachute jump team from Fort Riley, Kan., and the day finally came to a conclusion with the final performance of the Stilwell Roundup Club's IRA-approved rodeo.

During the day, the masters of ceremonies

for the program were Lincoln York and H.D. Gound.

A wide variety of entertainment was presented and featured music by George Mack Johnson and His Western Band, the Patriots of Springdale, Ark., Shrimp Fisher and His Western Band of Tahlequah, George Stufflebeam, the Stilwell High School Girls Ensemble, and Charlie Ross and His Band.

**This page made possible through
the contributions of the following:**

KIM'S JANITOR SUPPLY
Stilwell, Oklahoma

MAYTAG AUTOMATIC LAUNDRY
Gene and Eula Cranford

V.E. VANDERHEIDEN AUTOMOTIVE
319 S. 2nd—Wholesale and Retail

SCRUGGS
Radio and Television

PEGGY'S FLOWERS
"Flowers for All Occasions"

SMAY HOME & AUTO SUPPLY
Welcome, Visitors

OSBORN'S LAUNDRY
Welcome to Our Festival

FARMERS SUPPLY CO.
Home of the Farmers' Needs

STILWELL FFA CHAPTER
Welcomes You to the Festival

WELCOME TO THE FESTIVAL
E.G. and Ella Mae Carroll

HUNTER'S 5 AND 10
Clifton and Christine Hunter

WALDROOP'S STORE AT WATTS
"If You Need It, We Have It"

FARMERS PRODUCE AND MILL
Feed - Seed - Fertilizer

By Wren Fletcher

Cherokees' Payment Recalled

"It was just like a big carnival," Wren Fletcher, pioneer Stilwell merchant, said in recalling the week in 1894 when the U.S. Government paid the Cherokee people for the Cherokee Outlet the previous year.

The payment was made at the Flint District Court House southwest of Stilwell in the Dahlenegah Community, and each man, woman and child received \$265.65 in cash.

"All kinds of little booths were set up around the court house. Some were eating

places and others were for various forms of gambling. Each was operated by a white man who was there to get some of the Indians' money," Fletcher said.

"There must have been 20 or 25 stands around there."

Merchants also were present to collect money owed them by the Cherokees.

Thousands Present

He estimated that between 3,000 and 4,000 people were on the site for the entire week that it took to complete the payment.

The Indians were camped near a big spring located near

"I was 9 years old at the time it all went up to the court house store which was located at the time it was up there fooling around with other kids," he said.

Zeke Starr, treasurer of the Cherokee Nation, was in charge of the payment and also was one of the men who guarded the money.

The money had been brought from Smith or Fayetteville, (I don't remember which) and taken to the Flint Court House where it was kept in a heavy guard.

When the wagon arrived, a group of men in the Flint District Court House to guard the money during the payment. Among the local guards were Tandy Adair, Ute Adair

Pass by Booth

The Indians stepped up to the booth near the court house, where they paid the money. When they left the booth, they passed by the long line of booths (under the tree limbs) where the white men were best to separate the Indians from the money.

He recalled that the Indians gave the money for themselves and their families in their apron. As they passed the merchants they owed, or if they wanted to buy something, they had to buy something, they had to buy something for them to take out the money.

No one was killed during the payment, but a man from Arkansas was shot and killed while along in his wagon on the way to the court house. His body was found in the woods about 10 miles from the court house where he had stopped near a house.

"It didn't seem to be a big deal," Fletcher said. "Someone was killed, but I wanted to get rid of him."

Fletcher Builds

Years later, Fletcher built



Wren Fletcher and model of Flint Court House he made

This page made possible through
the contributions of the following:

Chamber of Commerce
Stilwell

Stilwell
Democrat-Journal

Container Corp. of America
Corrugated Containers—Muskogee

KUYKENDALL'S D
Welcome to th

GLEN RO
Electrical Wiring a

STILWELL PH
Reasonable

ISAACS GROCE
S.L. and Wilfr

MARTIN'S AUT
Phone 774-7742

WORSHAM'S
Food St

COLEMAN DA
Clyde and M

The Indians were camped all around the big spring located near the court house.

"I was 9 years old at the time and had gone up to the court house from my dad's store which was located about a mile away. I was up there fooling around just like the other kids," he said.

Zeke Starr, treasurer for the entire Cherokee Nation, was in charge of making the payment and also was in charge of hiring the men who guarded the money.

The money had been shipped to Fort Smith or Fayetteville, Ark. (he couldn't remember which) and then was hauled to the Flint Court House in a wagon under heavy guard.

When the wagon arrived here, a second group of men in the Flint District was hired to guard the money during the payment. Among the local guards were Jack Sawney, Tandy Adair, Ute Adair and Charley Scott.

Pass by Booths

The Indians stepped up to a tent, located near the court house, to receive their money. When they left the tent, they passed by the long line of booths (with roofs built of tree limbs) where the white men did their best to separate the Indians from their money.

He recalled that the Indian women carried the money for themselves and their children in their apron. As they walked past the merchants they owed, or where they wanted to buy something, they held out their aprons for them to take out their share of money.

No one was killed at the court house during the payment, but a white man from Arkansas was shot and killed as he drove along in his wagon on the Evansville road. His body was found in the wagon about 2½ miles from the court house after his horses had stopped near a house.

"It didn't seem to be a case of robbery," Fletcher said. "Someone apparently just wanted to get rid of him."

Fletcher Builds Replica

Years later, Fletcher built a replica of the

old two-story court house which was torn down many years ago. The court house he remembers is the second to be built in the Flint District. The first, which the Adair County Cherokee Historical Society hopes to reconstruct, was believed to have been a small log cabin. It stood on the site of the second court house. Contract price for the second structure was \$300.

Fletcher said he remembered the "whipping tree," a large walnut tree with a fork about five feet high, near the court house.

"They'd pull the Indian's hands between the fork, tie them and then whip him with a blacksnake whip as punishment for some crime he had committed," he said.

One Man Hung

He said a gallows once stood in front of the court house, but that only one man was ever hung. Later, another gallows was built about a quarter of a mile away on the Callahan place, but no one was ever hung there.

Shown an old picture of a group of men, each holding a rifle, posed in front of the court house, Fletcher said that it looked like the men who guarded the payment money—but he couldn't be sure because of the dimness of the picture and his failing eyesight.

In front of the group of men is a "body," but Fletcher said he imagined that it was someone pretending to be the victim of the riflemen "because of the position of the body."

"As far as I can remember, a posse never did bring a body to the court house," he said.

MANY CHEROKEES

About 91 per cent of the persons living in southern Adair County are of Cherokee descent. Also, the county has the greatest concentration of Cherokee Indians in the United States.

This page made possible through the contributions of the following:

KUYKENDALL'S DRY GOODS
Welcome to the Festival

GLEN ROBBINS
Electrical Wiring and Supplies

STILWELL PHARMACY
Reasonable Prices

ISAACS GROCERY & FEED
S.L. and Wilma Isaacs

MARTIN'S AUTO REPAIR
Phone 774-7742—Stilwell

WORSHAM'S CARDINAL
Food Store

COLEMAN DAIRY CUP
Clyde and Mae Jean

CAVINNESS SERVICE STATION
"Your Business Appreciated"

T.V. COLLINS GROCERY
Groceries - Meats - Dairy Products

GEORGE'S MARKET
George and Dorothy Stufflebeam

BARBARA'S BEAUTY SHOP
Barbara Wininger—Ph. 774-2249

GEORGE PHILPOTT GROCERY
Drop By and See Us

PRUITT'S CITGO SERVICE STATION
Stilwell, Oklahoma

DOSS STILWELL
Grocery and Market



Jerry Means auctioneering the strawberry sale

We're No. 1

Strawberry is glamor crop

Hundreds of people, including migrant workers, students and housewives, jump in each year to help harvest the strawberry crop in Adair County.

Only about 750 acres are in strawberries in Adair County, but this county is still Oklahoma's biggest producer.

The strawberry is, by no means, Adair County's biggest crop, but it most certainly is its most glamorous crop.

Strawberries mean about \$500,000 annually in the county's economy.

A good picker can pick about 100 quart boxes in a six-hour day. He receives an average of from 8 to 10 cents a box. In good years, the grower can clear as much as 12½ cents per box.

Seventy-three pickers working in a patch in 1969 picked 250 crates from 2½ acres for one of the best days on record anywhere in the county.

The experienced pickers use a variety of positions. Some stoop, others squat, kneel or sit. Those who sit say they remain seated and scoot from one plant to the next. Scooting on rocky soil, however, is hard on pants.

Local strawberry growers like the Blakemore variety best. Tennessee Beauty runs a poor second. Growers agree that Blakemore berries hold up better on the plant in hot weather and that they have a better taste. Besides, Blakemore plants are good for at least three years as compared with Tennessee Beauty's two.

The strawberry season is short, starting early in May and ending about June 1.

Thousands of pounds of berries are sold to Stilwell Foods, Inc., to be frozen and packed. The remainder is sold at Stilwell area markets, and to retail outlets (mostly chain stores) in Tulsa, Muskogee, Fort Smith, Ark., and other cities.

This page made possible through
the contributions of the following:

Jones Truck Lines, Inc.
Springdale, Arkansas

Compliments of
Colonial Bread Co.

Wal-Mart Discount City
Stilwell, Oklahoma



Facts to remember

About

Population—(1970 census) Adair County, 15,141.

Labor force—Male, 62; and State Highway 40 is 30 miles.

Transportation—Federal Interstate 40 is 30 miles. City Southern Railroad bus line serve the area city airport with runway.

Government—Mayor

Eastside A
Blackard H

C.H. Dun
Ok. Farm Bureau

Adair County Live
We Appreciate

D-X A
Selan Hall, Ho



Stilwell, a growing, bustling community

Facts to remember

About Stilwell

Population (1970 census)—City, 2,134; Adair County, 15,141.

Labor force—Male, 2,185; female, 792.

Transportation—Federal Highways 59 and 62; and State Highways 51 and 100. Interstate 40 is 30 miles south. The Kansas City Southern Railroad, six truck lines and a bus line serve the area. Stilwell also has a city airport with runways of 1,600 and 2,000 feet.

Government—Mayor-City Council. Active

volunteer fire department. Eight city police officers and three county officers. Two Oklahoma Highway Patrolmen are stationed here.

Organizations—Chamber of Commerce, Kiwanis, Garden Club, Roundup Club, Stilwell Study Club, Strawberry Capital Square Dance Club, American Legion, Veterans of Foreign Wars, Masonic Lodge, Order of Eastern Star, Oddfellows Lodge, Rebekah Lodge, Adair County Quarter

**This page made possible through
the contributions of the following:**

**Eastside Abstract Co.
Blackard Real Estate**

**C.H. Dunn Family
Ok. Farm Bureau Mutual Ins. Co.**

**Adair County Livestock Auction, Inc.
We Appreciate Your Business**

**D-X Agency
Selan Hall, Howard Johnson**

**Rock's Iron & Metal Co.
Scrap, New and Used Iron**

**Rex's House
of Bargains**

**Thomas Clean Cleaners
You-All Come to See Us**

**Back Hoe & Dump Truck Service
Roy Roberts**



A popular summer spot is Stilwell's new city pool

Horse Association.

Industrial foundation—Stilwell Industrial Foundation is a non-profit organization.

Recreation—Water sports, fishing and picnicking at nearby Lake Tenkiller, small game and deer hunting, city park, city swimming pool, two gymnasiums, movie theatre, and four golf courses in a 30-mile radius.

Communications — Independently-owned telephone company offers direct distance dialing, touch tone and mobile dial telephones.

Television reception—Three stations in Tulsa, Okla., and one in Fort Smith, Ark.

Special events—Strawberry Festival, Dogwood and fall foliage tours, rodeos and Adair County Fair.

Health—Thirty-six-bed Stilwell Municipal Hospital, and Adair County Health Building. The city has one dentist, three M.D.'s, an osteopath, two optometrists and a chiropractor. Two ambulance services operate in Stilwell area.

Climate—Average winter temperature is 37.4 degrees. Average summer temperature

This page made possible through
the contributions of the following:

Reese Tie Co.
Treated Posts and Poles

Bruce-Rogers Company
Fort Smith—Rogers, Ark.

Carnation Co., Can Division
Fayetteville, Arkansas

is 82.1. Rainfall average
year. Stilwell's elevation
1,112 feet.

Education—One elem
junior high and one hi
Oklahoma Experiment
north of Stilwell; John
Siloam Springs, Ark., 35
Arkansas, Fayettevill
Northeastern State Col
miles.

Industrial sites avail
located ¼ mile north of
easily secured. Land is
Kansas City Southern R.

Prevailing wage sca
wage and hour law pre

Major industries—S
Cherokee Nation Indust
Co., Adair County Orch
Fruit Farm.

Motels and Restaura
with 56 units. Numerous

Water and sewer syst
abundance of clean, pu
gallons per day—from
The lake is large enough
three years without a
Present sewer system

STRAUSS' DAIR
Jamie & Kahle

OKLAHOMA SCHO
Muskogee, C

BALLENTINE PI
Alma, Ar



First Baptist Church's new building

is 82.1. Rainfall averages 42.46 inches per year. Stilwell's elevation above sea level is 1,112 feet.

Education—One elementary school, one junior high and one high school. Eastern Oklahoma Experiment Station is located north of Stilwell; John Brown University, Siloam Springs, Ark., 35 miles; University of Arkansas, Fayetteville, 50 miles; and Northeastern State College, Tahlequah, 25 miles.

Industrial sites available—Thirty acres, located $\frac{1}{4}$ mile north of city limits, can be easily secured. Land is also available on Kansas City Southern Railroad right-of-way.

Prevailing wage scale—U.S. minimum wage and hour law prevails.

Major industries—Stilwell Foods, Inc., Cherokee Nation Industries, Inc., Reese Tie Co., Adair County Orchard Co., and Ideal Fruit Farm.

Motels and Restaurants—Three motels with 56 units. Numerous good eating places.

Water and sewer system—Stilwell has an abundance of clean, pure water—4,000,000 gallons per day—from 140-acre city lake. The lake is large enough to serve Stilwell for three years without a drop of rain falling. Present sewer system is large enough to

accommodate a city of 10,000. A \$500,000 industrial sewer system, which can handle 2,000,000 gallons of industrial wastes daily, was completed recently.

Electrical power—The City owns its own electrical distribution system, and gets its own power from the Grand River Dam Authority. Special industrial rates are offered. Present capacity of 5,000 KW could easily be enlarged. Ozarks Electric Cooperative serves the rural areas.

Banking—Bank of Commerce has total capitalization of \$826,439.10, with \$9,438,518.36 in deposits and total assets of \$10,432,977.88.

Indian Industrial Development Assistance—The Bureau of Indian Affairs, in cooperation with Oklahoma employee service agencies, will assist industry in recruitment of qualified applicants to meet personnel staffing requirements.

With the Arkansas River only about 30 miles away, Adair County is looking hopefully for an industrial boom now that the Arkansas and Verdigris Rivers are opened to navigation.

Industries interested in this area are invited to write Charles Cosby, president of the Stilwell Chamber of Commerce.

**This page made possible through
the contributions of the following:**

STRAUSS' DAIRY PRINCESS
Jamie & Kahleetah Strauss

OKLAHOMA SCHOOL SUPPLY CO.
Muskogee, Oklahoma

BALLENTINE PRODUCE, INC.
Alma, Arkansas

ARKANSAS PAPER COMPANY
Fort Smith, Arkansas

KELLEY'S DEPARTMENT STORE
Welcome to Adair County

REED'S HARDWARE & FURNITURE
Sarah - Quentin - Gene



Stilwell Municipal Hospital has 36 beds

Low-rent housing project in Stilwell



**This page made possible through
the contributions of the following:**

**Catron's Store
Welcome to the Festival**

**Day Discount Co.
Best Place to Trade**

**Vera and Max Baker
Welcome to the Festival**

**B.G. Stewart Wholesale
Candy—Notions—Drugs**

**Tom J. Carson
Insurance Agency**

**Parrott's Jewelry Shop
Gifts—Watch Repair**

**Save-Way Grocery
Buddy and Juanita**

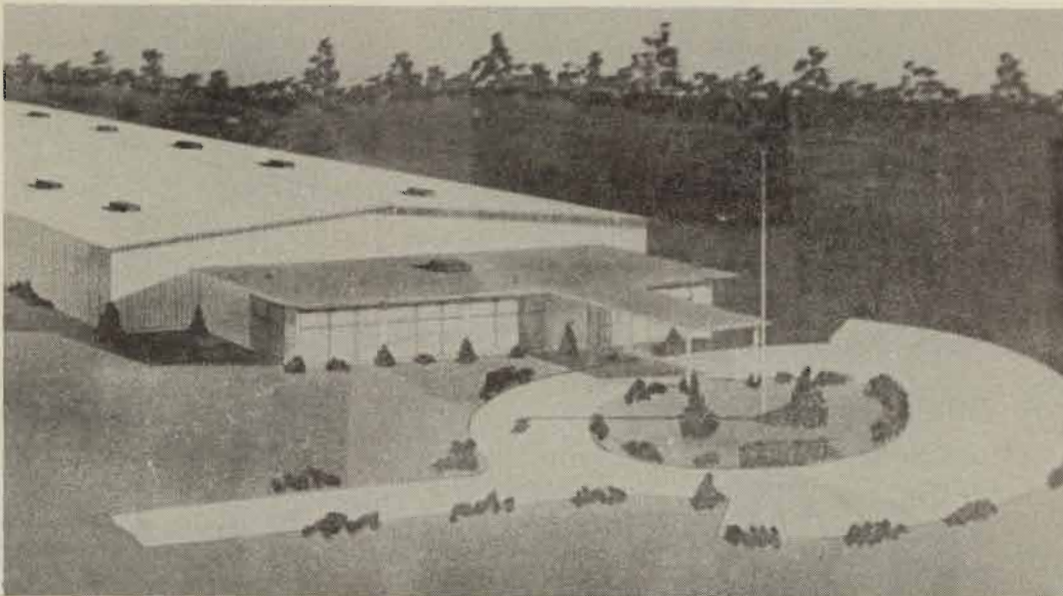
**Roberts Funeral Home
Serving Adair Co. Since 1913**

**Waters
Complete A**

**Stilwell
RCA, Ke**

**Rex's S
S**

**IGA War
Ronnie &**



Drawing of Cherokee Nation Industries' new plant here

Mutual-help houses for Cherokees near City Lake



**This page made possible through
the contributions of the following:**

**Waters Real Estate
Complete Appraisal Service**

**Stilwell Appliance
RCA, Kelvinator Dealer**

**Rex's Self-Service
Shoes**

**IGA Warehouse Market
Ronnie & Vicky Hansen**

**The Jack Riders
Welcome, Visitors**

**Ideal Fruit Farm
Strawberry Plants, Peaches, Apples**

**Doy's Service Station
Stilwell, Oklahoma**

**Swede's Grocery,
Market and Fabric Shop**

Stilwell Churches

Most religious faiths are represented in the immediate Stilwell area.

Other denominations have churches in communities surrounding Stilwell.

The local churches are:

Assembly of God Church

Central Baptist Church

Church of Christ

First Baptist Church

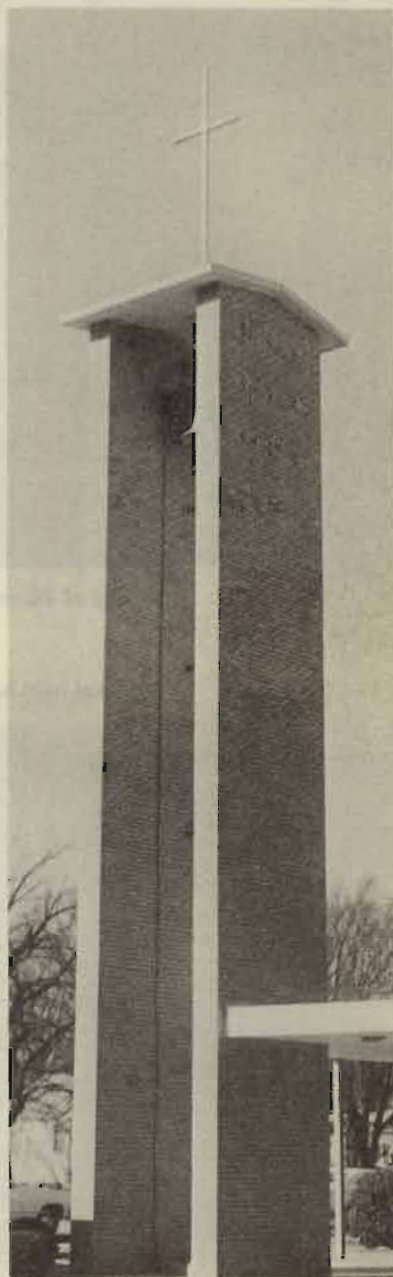
First Christian Church

First United Methodist Church

Free Holiness Church

United Methodist Indian Church

Pentecostal Holiness



This page made possible through
the contributions of the following:

Doc Beene's Restaurant
Steak, Shrimp & Mexican Food

Jim C. and Betty Dawson
Welcome, Visitors

Dairy Berry
Cold Drinks & Hamburgers

Stilwell
Nursing Home

Eagle Theatre
Bargain Entertainment

Stilwell Butane Co.
Welcome to the Festival

Stilwell Flower Shop
Flowers for All Occasions

Cliff's Drive-In & Diner
Breakfast, Lunch, Sandwiches



Agriculture From

It's from A to Z (apricots, apples, etc.)
fruits and vegetables grown
in Adair County.

Agriculture is big business
In the past 50 years,
livestock products have been a
source of agricultural income for
County.

Adair County produces
berries, green beans, and
are sold all over the Nation.
processed locally, while

Kelley Cannir
Prairie Grove

Ferry Morse Se
Memphis, T



Strawberry pickers

Agriculture

From apples to zucchini

It's from A to Z (apples to zucchini) for fruits and vegetables grown and processed in Adair County.

Agriculture is big business here.

In the past 50 years, sale of livestock and livestock products has been the principal source of agriculture income in Adair County.

Adair County products—including strawberries, green beans, apples and peaches—are sold all over the Nation. Some are processed locally, while others are shipped

fresh.

Stilwell is the home of Stilwell Foods, Inc., which has nationwide distribution; the Adair County Orchard Co. which is the largest in this four-state region; and the Ideal Fruit Farm.

Corn, small grain, grain sorghums and improved grasses and legumes for hay are grown mostly as feed for livestock. Timber is regarded as an important cash income.

Several poultry processing plants also flourish in this area.

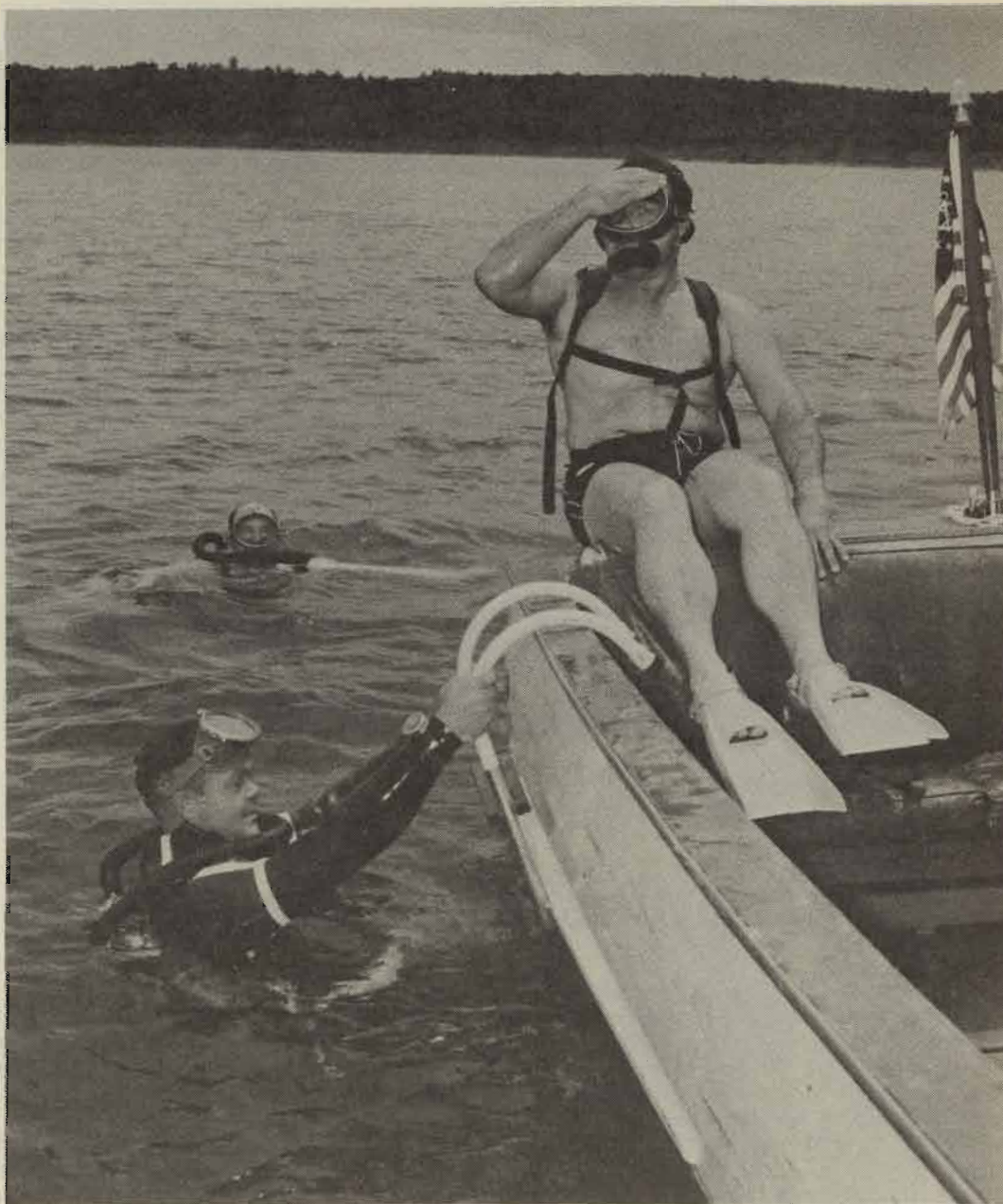
**This page made possible through
the contributions of the following:**

Kelley Canning Co., Inc.
Prairie Grove, Arkansas

Clary House, Inc.
Kitty Clover Potato Chips

Ferry Morse Seed Company
Memphis, Tennessee

Kansas City Southern Lines



Lake Tenkiller is a favorite with scuba divers

This page made possible through
the contributions of the following:

Coca-Cola Bottling Co.
of Fort Smith, Arkansas

Ag-Service, Inc.
Oklahoma City

Stilwell Municipal Hospital & Staff
Welcome You to the Festival

Come and s This is

Come to the "Green
spectacular vistas at e
Valleys, tree-covere
ed water fun.

Come, enjoy it all—t
crowded with color, a v
to see and do. Visit
nearby communities, c
sun, swim, fish, play
sports. All this and mor
climate.

The Illinois River, v



AAA ABSTRA
Frank Garrett, M

MC SPADDEN HC
S&H Green Stamp

TEEL LAUNDRY &
Muskogee, C

Come and stay a spell

This is 'Green Country'

Come to the "Green Country" and enjoy spectacular vistas at every turn.

Valleys, tree-covered mountains, unlimited water fun.

Come, enjoy it all—the best of Oklahoma, crowded with color, a wide variety of things to see and do. Visit colorful and historic nearby communities, enjoy the mountains, sun, swim, fish, play golf, enjoy water sports. All this and more in highly agreeable climate.

The Illinois River, which winds its way

through Adair County, is one of the most beautiful streams anywhere.

Beautiful Lake Tenkiller, located just a few minutes' drive west of Stilwell, is among the major attractions in this area.

Tenkiller Ferry Dam, which impounds water forming Lake Tenkiller, is located on the Illinois River near Gore. It was built by the Corps of Engineers in 1953 at a cost of \$23,822,000, principally for flood control, navigation and production of hydro-electric power.

Stilwell's state park is location for many outings



**This page made possible through
the contributions of the following:**

AAA ABSTRACT CO. INC.
Frank Garrett, Mgr., Stilwell

MC SPADDEN HOME SERVICE
S&H Green Stamps on Cash Sales

TEEL LAUNDRY & DRY CLEANING
Muskogee, Oklahoma

CAINS COFFEE COMPANY
Hotel & Restaurant Blended Coffee

PEPSI COLA
You've Got a Lot to Live

WONDER BREAD
Hostess Cakes - Profile Bread



Carnation Ice Cream
is being furnished for the
Twenty-Sixth Annual Strawberry Festival
through courtesy of

Stilwell Cafe
Worsham Grocery
Sav-U Discount Foods
Buzzard's Grocery
Saveway Grocery
Isaacs' Grocery
Midway Grocery
Stilwell Grocery
Philpott Grocery
Speedy Mart
Midway Drive-In

Pearl's Grocery
Stilwell Municipal Hospital
Doc Beene's Restaurant
Peavine Grocery
Swede's Food Market
Claude King Grocery
Collins' Grocery
George's Fruit Market
Marie's Grocery
Luther's Grocery
Sheppard's Grocery

"For Contented Families"