

25th Annual

Strawberry Festival

Stilwell, Oklahoma

May 13, 1972



Queen Kathy Rosebeary



Cherokees perform authentic dance at Tsa-La-Gi, recreated Indian village

County's history is traced

Adair County, one of Oklahoma's smallest, was carved from two districts of the old Cherokee Nation—Flint and Goingsnake.

The Western Cherokees were the predominant tribe in this area by 1808. These were Indians who had left voluntarily the main tribe and their homes in Georgia, Tennessee and North Carolina to migrate west.

More than 7,000 already had settled in Arkansas between the Arkansas and White Rivers before their title to the land was confirmed by the United States by the treaty of 1817.

A new treaty 11 years later gave them in exchange for the homes in Arkansas a grant of seven million acres in Indian Territory.

The Western Cherokees were joined by the Eastern Cherokees, who were forced

to leave their homes in Georgia, Tennessee, and North Carolina and were driven over the Trail of Tears to this area, in about 1838.

In 1839 this area, as part of the Flint and Goingsnake Districts, belonged to the old Cherokee Nation. In 1907 when the Indian Territory was admitted to the Union as the State of Oklahoma, this area was included as a county and named Adair in honor of a prominent Cherokee jurist and educator.

ABOUT THE COVER

Official photograph of Miss Kathy Rosebeary, who will be crowned queen of the Silver Anniversary Strawberry Festival in Stilwell on Saturday, May 13, 1972.

The cover was made possible through the contribution of Stilwell Foods, Inc.

This page made possible through
the contribution of the following:

Felts Family Shoe Store
Wear for the Family

Cox Circle Inn Motel
774-7022 — Downtown Stilwell

Home Supply
Frigidaire — Maytag — Zenith

Stilwell Lumber Co.
774-7058 — Building Supplies

Lloyd Brewer City Filling Stat.
"39 Years Continuous Service"

Sportsman's Ice
Van Buren, Arkansas

YOU'RE IN
Welco

It is my pleasure,
well Kiwanis Club,
ver Anniversary cel
berry Festival on S

The welcome mat
friends and relatives.
Stilwell Kiwanis C
members of the co
months in preparing
berry Festival which
1948.

C
V
J
Past L

Larry Adair
Bob Baker
J.D. Briggs
Ralph Caste
Homer Dunn
Burl Doyle
J.B. Goode
H.D. Gound
Norvell Hen

Ozarks Elec
"Consumer"

Dollar Di
Vis

YOU'RE INVITED

Welcome to the Festival

It is my pleasure, as president of the Stilwell Kiwanis Club, to invite you to the Silver Anniversary celebration of our Strawberry Festival on Saturday, May 13.

The welcome mat is out to you and your friends and relatives.

Stilwell Kiwanis Club members, and other members of the community, have spent months in preparing for this special Strawberry Festival which had its beginning in 1948.

I join my fellow Kiwanians and all Adair County residents in welcoming you to this Festival Day for visiting and fellowship, watching the parade, and enjoying the unusually fine program that has been prepared for you.

Jack Perry,
President,
Stilwell Kiwanis Club



Jack Perry
President

Phil Keeter
Past President

Charles Cosby
Vice President

Berry A. Ferguson
Secretary-Treasurer

Joe H. Carson
Past Lieutenant-Governor

W. Neil Morton
Lieutenant-Governor

Other Kiwanis Club members

Larry Adair
Bob Baker
J.D. Briggs
Ralph Casteel
Homer Dunn
Burl Doyle
J.B. Goode
H.D. Gound
Norvell Henley

Dewey Moss
Charles McFarland
Tobe O'Neal
W.B. Pemberton
Larry Roberts
J.L. Hallford
James W. Hardwick
Wesley Holley
Burnell Isaacs
Sam O. Love

Don Smothers
L.T. Spray
Mack Starr
Clint Thomas
Julius Thomas
Claude E. Todd
Jimmie Varnell
Lincoln York
Wade Zumwalt

This page made possible through
the contribution of the following:

Ozarks Electric Cooperative
"Consumer-Owned Utility"

C.J. Carson
Insurance Agency

Dollar Discount City
Visit Us

"The Friendly"
Bank of Commerce

PROGRAM

May 13, 1972

Lincoln York and H. D. Gound, Masters of Ceremonies

George Mack Johnson and His Western Band	9:00 A.M.
Parade	10:00 A.M.
Phil Keeter, Parade Master	
National Anthem	11:00 A.M.
Larry Eubanks	
Invocation	11:03 A.M.
Mr J.B. Goode, Church of Christ	
Salute to the Flag	11:05 A.M.
Boy Scouts of America	
Introduction of Distinguished Guests	11:07 A.M.
Neil Morton, Lt. Governor, Division XXXI Texas-Oklahoma District Kiwanis International	
Crowning of Strawberry Queen for 1972	11:15 A.M.
Robert S. Holt, Dallas, Texas, Governor Texas-Oklahoma District Kiwanis International	
Presentation of Scholarship to the Queen	11:25 A.M.
Dr. Robert Collier, President, Northeastern State College	
Welcoming Address	11:30 A.M.
Jack Perry, President, Stilwell Kiwanis Club	
The Patriots of Springdale, Ark.	11:33 A.M.
Introduction of Former Queens	12:35 P.M.
Jack Perry	
Shrimp Fisher and His Western Band	12:40 P.M.
George Stufflebeam	1:25 P.M.
Stilwell High School Girls Ensemble	1:40 P.M.
Mrs Neil Morton, Director	
Awards to Champion Strawberry Growers	2:00 P.M.
The World's Prettiest Strawberries	
Strawberry Auction	2:15 P.M.
Stage Entertainment — Charlie Ross and His Band	2:50 P.M.
Free Servings of Strawberries and Ice Cream	3:00 P.M.
Rodeo on May 10, 11, 12, 13	8:00 P.M.
Sponsored by Stilwell Roundup Club	

This page made possible through
the contribution of the following:

Kelley Canning Co., Inc.
Prairie Grove, Ark.

Ferry Morse Seed Company
Memphis, Tennessee

Kitty Clover Potato Chip Co.
Springfield, Missouri



Queen Kathy Rosebeary

CORONATION Festival

Miss Kathy Rosebeary, daughter of the 1972 graduating School, will be crowned Strawberry Festival her as a highlight of the 2

Miss Rosebeary, daughter of Mrs L.A. Rosebeary, chosen in March in co other Adair County gir

She will succeed Miss daughter of Mr and M Route 3 Stilwell, the 19

Miss Rosebeary's at Kathy Paden, 16, daugh

Garrett C
and Olds



Queen Kathy Rosebeary and attendants, Kathy Paden, right, and Terri Presley

CORONATION MAY 13

Festival Queen for 1972

Miss Kathy Rosebeary, 17, valedictorian of the 1972 graduating class of Watts High School, will be crowned queen of the 1972 Strawberry Festival here Saturday, May 13 as a highlight of the 25th annual event.

Miss Rosebeary, daughter of Mr and Mrs L.A. Rosebeary, Route 1 Watts, was chosen in March in competition with 12 other Adair County girls.

She will succeed Miss Donna Padgett, daughter of Mr and Mrs Jimmie Padgett, Route 3 Stilwell, the 1971 Queen.

Miss Rosebeary's attendants are Miss Kathy Paden, 16, daughter of Mr and Mrs

J.C. Paden, Stilwell, first runnerup; and Miss Terri Presley, 16, daughter of Mr and Mrs Bill Presley, Route 2 Stilwell.

First and second alternates to the attendants are Miss Sheila Nichols, 16, daughter of Mr and Mrs Fred Nichols Sr., Route 1 Stilwell; and Miss Tabby Scism, 16, daughter of Mr and Mrs James T. Scism, Route 2 Watts.

An estimated 400 persons attended the queen contest held in the E.G. McLemore Field House. Five out-of-county judges selected the queen on the basis of beauty, poise and personality.

This page made possible through
the contribution of the following:

**Garrett Chevrolet
and Olds Co., Inc.**

**Piggly Wiggly
& Speedy Mart**

**Sav-U Foods
Jimmie & Doris Varnell**



Stilwell Foods, Inc.'s prize-winning float

GIRLS, BANDS, FLOATS

Everybody loves a parade

At least three records—longest parade, largest crowd and highest auction price for the championship strawberries—were set at the 24th annual Strawberry Festival in 1971.

The weather was perfect, and families for miles around took advantage of it to attend the Festival, one of Oklahoma's most outstanding annual events.

It was the first time in seven years that

This page made possible through
the contribution of the following:

Kuykendall's Dry Goods
Welcome to the Festival
Glen Robbins
Electrical Wiring & Supplies
Stilwell Pharmacy
Reasonable Prices
Daylight Donut Shop
Meals — Bakery Goods
Isaacs Grocery & Feed
S.L. and Wilma Isaacs
Warehouse Sales
Frt. Dmg'd Msd. 117 W. Division
Martin's Auto Repair
Ph. 774-7742 — Stilwell

King's Restaurant
Strawberry Capitol Motel
Caviness Service Station
"Your Business Appreciated"
T.V. Collins Grocery
Groceries - Meats - Dairy Products
George's Market
George & Dorothy Stuffbeam
Barbara's Beauty Shop
Barbara Wininger — Ph. 774-2249
Floyd's
Derby Station
George Philpott Grocery
Drop By and See Us

Arkansas Off
Fort Sm
Schmied
Springd
Mead Containe
Fort Sm



at least a few
on Festival D
Unofficial e
from 15,000 t
Many weeks
Kiwanis Club
stage the Fes
operation of m
tions over a v

at least a few drops of rain had not fallen on Festival Day.

Unofficial estimates of the crowd ranged from 15,000 to 17,000.

Many weeks of planning by the Stilwell Kiwanis Club are required each year to stage the Festival which receives the co-operation of many individuals and organizations over a wide area.



All eyes on parade



Clown is added treat for parade watchers

This page made possible through
the contribution of the following:

Arkansas Office Equipment Co.
Fort Smith, Arkansas

Schmieding Bros., Inc.
Springdale, Arkansas

Mead Containers, Div. Mead Corp.
Fort Smith, Arkansas

Arkhole Sand & Gravel Co.
Grade A Blocks — Fort Gibson

Carrington Oil Co.
Phillips 66 Distributor

Stilwell Ready Mix
U.S. 59 North



1971 Queen Donna Padgett, her court, and Kiwanis Lt. Gov. Earl Walker

MISS DONNA PADGETT

Queen of 1971 Festival

Miss Donna Padgett was queen of the Strawberry Festival in 1971. She was crowned by Kiwanis Lt. Gov. Earl Walker of Okemah.

Miss Padgett, daughter of Mr and Mrs Jimmie Padgett, Route 3 Stilwell, was attended by Miss Renee Morgan, daughter of Mrs Bettye Leatherwood, Stilwell, first runnerup; and Miss Ginger Malcolm, daughter of Mr and Mrs Gerald Malcolm, Route 3 Stilwell, second runnerup.

The coronation ceremony took place on a specially-built platform on the lawn of the Adair County Courthouse following

the parade.

Miss Padgett won the competition in 1971 over nine other Adair County girls. She had succeeded Miss Margaret Couch, daughter of Mr and Mrs Fred Couch, Stilwell.

GOLDA'S OLD MILL

Golda's Old Stone Mill, located off SH 51 West of Stilwell, is over 100 years old. The water wheel still provides power for grinding. Hundreds of tourists visit the mill each year.

This page made possible through
the contribution of the following:

**The Coca-Cola Bottling Co.
of Fort Smith, Arkansas**

**Bert's 66 Service Station
Stilwell, Oklahoma**

**Stilwell Municipal Hospital & Staff
Welcome you to the Festival**



Gov. I

TOP CRATE

Governor

Area strawberry gro...
of \$2,250 at the auction...
Festival Day in 1971.

The amount set a...
in 1970 was \$1,515.

Leonard Baird, fir...
ceived \$375 for his...
Inc., was the success...
the largest sum ever...
auction.

Baird also received...
from the Kiwanis Clu...
Earnest Hendrix, se

Oklahoma T...
Kenneth & J

Means Fur...
Jerry & A

Stilwel...
Welcome



Gov. David Hall, right, Claude Todd, left, and Leonard Baird

TOP CRATE BRINGS \$375

Governor presents awards

Area strawberry growers received a total of \$2,250 at the auction held on Strawberry Festival Day in 1971.

The amount set a new record. The total in 1970 was \$1,515.

Leonard Baird, first place winner, received \$375 for his crate. Stilwell Foods, Inc., was the successful bidder. This was the largest sum ever paid at the annual auction.

Baird also received a trophy and a check from the Kiwanis Club for \$20.

Earnest Hendrix, second place winner, re-

ceived \$350 for his crate from the Kelly Canning Co. of Prairie Grove, Ark. He also received a \$15 check from the Kiwanis Club.

Lanny Cain's crate placed third and was purchased by the Kelly Canning Co. for \$275.

Awards to the champion growers were presented by Gov. David Hall. Claude Todd, president of Stilwell Foods, Inc., presented the prize crate to the Governor.

"This is the best part of being governor," Hall told the crowd.

This page made possible through
the contribution of the following:

Oklahoma Tire & Supply
Kenneth & Johnnie Rains

Means Furniture Co.
Jerry & Ann Means

Stilwell Cafe
Welcome. Visitors

Stilwell Mercantile
Burnell Isaacs, Mgr.

Thomas Clean Cleaners
You-All Come to See Us

DeJarnatt Brothers
Dirt Contractors



Indian singer entertains crowd

FOR ALL TASTES

Crowd enjoys music, berries

Entertainment for all tastes featured the program at the 1971 Strawberry Festival.

Folks' taste in music may be different, but everyone has a taste for the free strawberries and ice cream which annually top off the events at the Festival.

The program featured the Singing Minstrels, a 30-member folk and pop group from Lewis College, Lockport, Ill., directed by Enoch Estep, a Stilwell High School graduate; plus the country western bands

of Mack Johnson, Jim Staggs and Shrimp Fisher; the Chieftains Quartet; and members of the Stilwell High School Chorus.

Neil Morton was master of ceremonies for the program. He was assisted by Mr Lincoln York, First Christian Church minister, and the Rev Jim Hardwick, First United Methodist Church minister.

The day's events ended with the serving of strawberries and ice cream to an estimated 12,000 persons.

This page made possible through
the contribution of the following:

Allied Telephone Co.
"Continued Service & Progress"

Keystone Seed Company
St. Louis, Missouri

T&H Starr Valley Angus Farms
Canadian Sires-Thornton & Harris

Ag-Service, Inc.
Oklahoma City

PERFECT DAY
when Strawberry
dig into their free
ice cream.



Kim's
Stilwe
Maytag Au
Gene and
V.E. Vander
319 S. 2nd —
Wo
Hostess Cal
S
Radio a
Swed
&
Gray's
Gene

PERFECT DAY comes to a close when Strawberry Festival visitors dig into their free strawberries and ice cream.



This page made possible through
the contribution of the following:

Kim's Janitor Supply
Stilwell, Oklahoma
Maytag Automatic Laundry
Gene and Eula Cranford
V.E. Vanderheiden Automotive
319 S. 2nd — Wholesale & Retail
Wonder Bread
Hostess Cakes - Profile Bread
Scruggs
Radio and Television
Swede's Grocery
& Market
Gray's Dairy Cup
Gene and Bonnie

Osborn's Laundry
Welcome to Our Festival
Farmers Supply Co.
Home of the Farmers' Needs
Stilwell FFA Chapter
Welcomes You to the Festival
Welcome to the Festival
E.G. and Ella Mae Carroll
Hunter's 5 and 10
Clifton & Christine Hunter
Waldroop's Store at Watts
"If You Need It, We Have It"
Farmers Produce
Feed - Seed - Fertilizer

EARLY YEARS RECALLED

Festival Celebrates 25th Birthday

Stilwell's Strawberry Festival celebrates its Silver Anniversary on May 13 of this year.

The Festival had its beginning in 1948 when the Stilwell Kiwanis Club decided to do something about stimulating interest in one of Adair County's major economic resources.

That first Festival, by present day standards, wasn't much—but it was a start.

Norvell Henley, the only charter member of the Stilwell Kiwanis Club who is still an active member, recalls the first Festival didn't have a parade—"but it did have lots of music, a queen contest and speech-making."

The history of the Festival and the Stilwell Kiwanis Club are intertwined. The Festival was the first big project of the fledgling Kiwanis Club.

The program in 1948 included games and contests, numbers by the Stilwell High School Band, music by a high school hill-billy orchestra, talks by Lt. Gov. James E. Berry and others, and a dance that night.

Hundreds of free portions of strawberries and ice cream were served to all.

The first queen, Pat Reed (now Mrs Bob Leatherwood of Stilwell) was nine years old. Besides being cute and attractive, contestants in the first years of the Festival were required to be actual strawberry pickers and were sponsored by their employers.



First Queen

"The contest, on the same day as the Festival, was held on the courthouse steps," Pat recalled. "There were

about 10 contestants. We didn't have to perform—we just sat there and were judged on the basis of applause from the crowd."

"I received a \$50 U.S. Savings Bond and a wristwatch—plus some new clothes given me by my sponsor, Bethel Eubanks."

"I still have my crown, which was made of cardboard," she added.

The late Jack Chaffin was president of the Stilwell Kiwanis Club that year. Among Stilwell men taking an active part in the celebration were George Waters, Joe H. Carson, Ted Sebastian, Doc Beene, Norvell Henley and the late Paul Chambers, Stilwell mayor at the time.

Kiwanis leaders thought they might have a winner after the first Festival, especially after it was discovered the Festival didn't cost as much as had been expected. Expenses that year totaled \$309.75.

The second Festival was more ambitious. That was the year the Oklahoma House of Representatives designated Stilwell as the Strawberry Capital of the World following introduction of a resolution by W.H. (Bill) Langley, a member of the House then.

By the Festival's fifth anniversary in 1952, there was no doubt it was here to stay. W.H. (Bill) Langley, Chamber of Commerce president that year, was master of ceremonies. Gov. Johnston Murray was the principal speaker, and Norma Lee Latta reigned as queen. The parade boasted five high school bands from Poteau, Westville, Muskogee, Lincoln, Ark., and Stilwell. John R. Brown's berries won first prize.

Berry Ferguson was Kiwanis president at the 10th annual Festival in 1957. Mary Jane Cabe was queen. The parade was delayed an hour by rain. The Stilwell Study Club's float won first prize for the fourth year in a row. Carlos Brannon displayed



Roundup Club in

the championship s brought \$200 at the a

In 1962, on the Festival, Marilyn Todd Colbert Starr was crowned. Luthje's berries won first prize that year.

Queen of the 20th annual Festival was Karen Nichols. She was president. Bob Cain was also present. They brought in a lot of berries.

Each year, the Festival draws large crowds keep getting larger. Now it is considered one of Adair County's most outstanding events.

This page made possible through the contribution of the following:

Tom J. Carson
Insurance Agency

Parrott's Jewelry Shop
Gifts — Watch Repair

Save-Way Grocery
Buddy and Juanita

Roberts Funeral Home
Serving Adair Co. Since 1913

Catron's Store
Welcome to the Festival

Day Discount Co.
Best Place to Trade

Vera and Max Baker
Welcome to the Festival

B.G. Stewart Wholesale
Candy - Notions - Drugs

Wat
Comple

Stil
RCA

Rex

Wor



Roundup Club in Festival Parade, about 1954, at US 59 and Division Street intersection

the championship strawberries which brought \$200 at the auction.

In 1962, on the Festival's 15th anniversary, Marilyn Todd was crowned queen. Colbert Starr was club president. W.E. Luethje's berries won first prize. No rain fell that year.

Queen of the 20th annual Festival in 1967 was Karen Nichols. L.T. Spray was club president. Bob Cain had the top crate of berries. They brought \$350—a new record.

Each year, the Festival improves and the crowds keep getting larger. The Festival now is considered one of Eastern Oklahoma's most outstanding annual events.

Parachutists To Jump May 13

The Black Knights, a precision parachute jump team from Fort Riley, Kan., will be a special added attraction at the 25th annual Strawberry Festival on Saturday, May 13.

The parachutists have scheduled a 4:30 p.m. jump when they will land behind the Stilwell Junior High School Building; and a 7:30 p.m. jump when they will land at Rodeo Field.

This page made possible through
the contribution of the following:

Waters Real Estate
Complete Appraisal Service

Stilwell Appliance
RCA, Kelvinator Dealer

Rex's Self-Service
Shoes

Worsham's Cardinal
Food Store

The Jack Riders
Welcome, Visitors

Smay Auto Supply
Welcome, Visitors

Jim's Service Station
Coin-Op Car Wash

Ideal Fruit Farm
Strawberry Plants, Peaches, Apples

COUNTY IS NO 1 PRODUCER

Strawberry glamor crop

The luscious strawberry is not Adair County's biggest crop—but it is by far the most glamorous.

Hundreds of people, including migrant workers, students and housewives, jump in each year to help harvest the strawberry crop that in 1969 set a record yield per acre.

Only about 750 acres are in strawberries in Adair County, but this county is still Oklahoma's biggest producer.

Strawberries mean about \$500,000 annually in the county's economy.

A good picker can pick about 100 quart boxes in a six-hour day. He receives an average of from 8 to 10 cents a box. In good years, the grower can clear as much as 12½ cents per box.

Seventy-three pickers working in a patch in 1969 picked 250 crates from 2½ acres for one of the best days on record anywhere in the county.

The experienced pickers use a variety of positions. Some stoop, others squat, kneel or sit. Those who sit say they remain seated and scoot from one plant to the next. Scooting on rocky soil, however, is hard on pants.

Local strawberry growers like the Blake-



more variety best. Tennessee Beauty runs a poor second. Growers agree that Blakemore berries hold up better on the plant in hot weather and that they have a better taste. Besides, Blakemore plants are good for at least three years as compared with Tennessee Beauty's two.

The strawberry season is short, starting early in May and ending about June 1.

Thousands of pounds of berries are sold to Stilwell Foods, Inc., to be frozen and packed. The remainder is sold at Stilwell area markets, and to retail outlets (mostly chain stores) in Tulsa, Muskogee, Fort Smith, Ark., and other cities.

Many people from miles around drive to Stilwell each May to buy berries to take home for themselves, neighbors and relatives.

Besides the commercial growers, many others have small patches in their own gardens. Commercial patches range in size from less than an acre to about 15 acres.



This page made possible, through
the contribution of the following:

Doc Beene's Restaurant
"Strawberry Shortcake Always"

Jim and Leta Dawson
Welcome Visitors

Dairy Berry
Mr. and Mrs. Roy Roberts

Stilwell
Nursing Home

Eagle Theatre
Bargain Entertainment

Stilwell Butane Co.
Welcome to the Festival

Stilwell Flower Shop
Flowers for all Occasions

Cliff's Drive In
Mr. and Mrs. Roy Roberts

Population (1970 c
Adair County, 15,141.
Labor force—Male,
Transportation—Fed
and 62; and State H
Interstate 40 is 30 m
sas City Southern Rai
and a bus line serve t

Sun Oil C
DX-LF
Strauss' Dair
Jamie & Kahl

Cains Co
Hotel and Restauran



Stilwell, a growing, bustling community

Facts to remember ABOUT STILWELL

Population (1970 census)—City, 2,134; Adair County, 15,141.

Labor force—Male, 2,185; female, 792.

Transportation—Federal Highways 59 and 62; and State Highways 51 and 100. Interstate 40 is 30 miles south. The Kansas City Southern Railroad, six truck lines and a bus line serve the area. Stilwell also

has a city airport with runways of 1,600 and 2,000 feet.

Government—Mayor-City Council. Active volunteer fire department. Five city police officers and three county officers. Two Oklahoma Highway Patrolmen are stationed here.

This page made possible through
the contribution of the following:

Sun Oil Company
DX-LP Gas

Strauss' Dairy Princess
Jamie & Kahleetah Strauss

Cains Coffee Co.
Hotel and Restaurant Blended Coffee

Teel Laundry & Dry Cleaning
Muskogee, Okla.

Ballentine Produce, Inc.
Alma, Arkansas

Arkansas Paper Co.
Ft. Smith, Arkansas



Stilwell's new swimming pool

Organizations—Chamber of Commerce, Kiwanis, Garden Club, Roundup Club, Junior Chamber of Commerce, Stilwell Study Club, Strawberry Capital Square Dance Club, American Legion, Veterans of Foreign Wars, Masonic Lodge, Order of Eastern Star, Oddfellows Lodge, Rebekah Lodge, Adair County Quarter Horse Association.

Industrial foundation—Stilwell Industrial Foundation is a non-profit organization.

Recreation—Water sports, fishing and

picnicking at nearby Lake Tenkiller, small game and deer hunting, city park, city swimming pool, two gymnasiums, movie theatre, and four golf courses in 30-mile radius.

Communications — Independently-owned telephone company offers direct distance dialing, touch tone and mobile dial telephones. Stilwell will be among the first in Oklahoma with one-party service in initial rate area.

Television reception—Three stations in

This page made possible through
the contribution of the following:

Aztec Building Supply
Ph. 774-7093 — Stilwell

Foremost Milk
A Perfectly Balanced Milk

Compliments of
Colonial Bread Co.

Jones Truck Lines, Inc.
Springdale, Arkansas



Tulsa, Okla., and one

Special events — S
Dogwood and fall folia
Adair County Fair.

Health—Thirty-six-b
Hospital, and Adair C
ing. The city has one o
an osteopath, one opto
practor.

Climate — Average
is 37.4 degrees. Avera



Chamber of
Stilw

Co



Low-rent housing project has 36 units

Tulsa, Okla., and one in Fort Smith, Ark.

Special events — Strawberry Festival, Dogwood and fall foliage tours, rodeos and Adair County Fair.

Health—Thirty-six-bed Stilwell Municipal Hospital, and Adair County Health Building. The city has one dentist, three M.D.'s, an osteopath, one optometrist and a chiropractor.

Climate — Average winter temperature is 37.4 degrees. Average summer tempera-

ture is 82.1. Rainfall averages 42.46 inches per year. Stilwell's elevation above sea level is 1,112 feet.

Education—One elementary school, one junior high and one high school. Eastern Oklahoma Experiment Station is located north of Stilwell. Three institutions of higher learning are within 50-mile radius of Stilwell—John Brown University, Siloam Springs, Ark., 35 miles; University of Arkansas, Fayetteville, 50 miles; and Northeastern State College, Tahlequah, 25

Stilwell's new Community Facilities building



**This page made possible through
the contribution of the following:**

**Chamber of Commerce
Stilwell**

**Stilwell
Democrat-Journal**

**Container Corp. of America
Corrugated Containers — Muskogee**



Stilwell's new state park is location for many outings

miles.

Industrial buildings available — Two metal buildings, one 340 by 100 feet, and one 240 by 100 feet.

Industrial sites available—Thirty acres, located $\frac{1}{4}$ mile north of city limits, can be easily secured. Land is also available on Kansas City Southern Railroad right-of-way.

Prevailing wage scale—U.S. minimum wage and hour law prevails.

Major industries—Stilwell Foods, Inc., Cherokee Nation Industries, Inc., Reese Tie Co., Adair County Orchard Co., Stilwell Frozen Foods, and Ideal Fruit Farm.

Motels and Restaurants—Three motels with 56 units. Numerous good eating places.

Water and sewer system—Stilwell has an abundance of clean, pure water—4,000,000 gallons per day—from 140-acre city lake. The lake is large enough to serve Stilwell for three years without a drop of rain falling. Present sewer system is large enough to accommodate a city of 10,000. A \$500,000 industrial sewer system, which will handle 2,000,000 gallons of industrial wastes daily, was completed recently.

Electrical power—The City owns its own electrical distribution system, and gets its own power from the Grand River Dam Authority. Special industrial rates are of-

This page made possible through
the contribution of the following:

Southern Ice Company
Freezing & Storage — Muskogee

Preston Refrigeration Co.
Fort Smith, Arkansas

Diamond International Corp.
Heekin Can Div., Springdale, Ark.

Arst Equipment Company
Clark Fork Lifts — Tulsa

Muskogee Packing Co.
Muskogee, Oklahoma

The Fadler Co., Inc.,
Fresh Fruits & Vegetables

ferred. Present capacity easily be enlarged. Cooperative serves the rural

Banking—Bank of capitalization of \$718,822.57 in deposits \$8,962,673.54.

Indian Industrial Development—The Bureau of Indian Affairs, in cooperation with Oklahoma agencies, will assist in the development of qualified applicants for staffing requirements.

With the Arkansas River, 10 miles away, Adair County is fully for an industrial development. Arkansas and Verdigris to navigation.

Industries interested in writing Charles the Stilwell Chamber

Freem
"Don't

Pe
"Flower

C.H
Ok. Farm B

U
Bargains E



Stilwell Municipal Hospital

ferred. Present capacity of 5,000 KW could easily be enlarged. Ozarks Electric Cooperative serves the rural areas.

Banking—Bank of Commerce has total capitalization of \$716,065.47 with \$7,923,882.57 in deposits and total assets of \$8,962,673.54.

Indian Industrial Development Assistance—The Bureau of Indian Affairs, in cooperation with Oklahoma employee service agencies, will assist industry in recruitment of qualified applicants to meet personnel staffing requirements.

With the Arkansas River only about 30 miles away, Adair County is looking hopefully for an industrial boom now that the Arkansas and Verdigris Rivers are opened to navigation.

Industries interested in this area are invited to write Charles Cosby, president of the Stilwell Chamber of Commerce.



Dogwood blooms are attraction

**This page made possible through
the contribution of the following:**

**Freeman's Food Center
"Don't Shop—Just Stop"**

**Peggy's Flowers
"Flower for All Occasions"**

**C.H. Dunn Family
Ok. Farm Bureau Mutual Ins. Co.**

**U-Save Mart
Bargains Everywhere You Look**

**Adair County Livestock Auction, Inc.
We Appreciate Your Business**

**Sinclair Refining Co.
Selan Hall, Howard Johnson**

**Rock's Iron & Metal Co.
Scrap, New and Used Iron**

**Rex's House
of Bargains**

Stilwell churches

Most religious faiths are represented in the immediate Stilwell area.

Other denominations have churches in communities surrounding Stilwell.

The local churches are:

Assembly of God Church

Central Baptist Church

Church of Christ

First Baptist Church

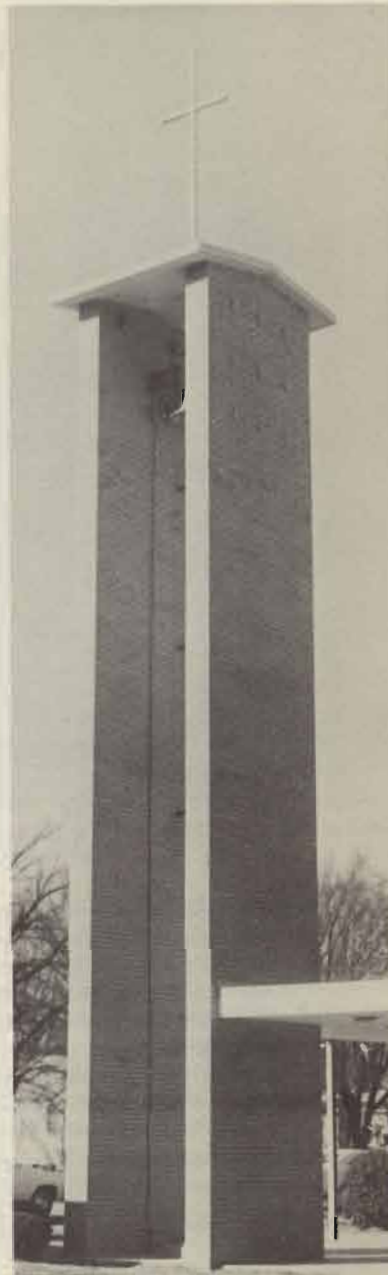
First Christian Church

First United Methodist Church

Free Holiness Church

United Methodist Indian Church

Pentecostal Holiness



This page made possible through
the contribution of the following:

Asgrow Seed Company
Atlanta, Ga. - San Antonio, Tex.

Chaffin Pharmacy
Make This Your Hdq.

Consolidated Industrial Equip. Co.
Fort Smith, Arkansas



AGRICULTURE Diversification

Apples and peaches, berries and other agricultural products are big business in Adair County.

In the past 50 years, the county has become a major source of agricultural products for the state.

Adair County products, including apples, peaches, berries, green beans, and other crops, are sold all over the state and processed locally, while

Eastside
Blackman

Lloyd
Hill

The Old
Antique

Stilwell
Charles



Livestock is a Growing Industry

AGRICULTURE

Diversified, mechanized

Apples and peaches—along with strawberries and other agricultural products—are big business in Adair County.

In the past 50 years, sale of livestock and livestock products has been the principal source of agriculture income in Adair County.

Adair County products—including strawberries, green beans, apples and peaches—are sold all over the Nation. Some are processed locally, while others are shipped

fresh.

Stilwell is the home of Stilwell Foods, Inc., which has nationwide distribution; the Adair County Orchard Co. which is the largest in this four-state region; and the Ideal Fruit Farm.

Corn, small grain, grain sorghums and improved grasses and legumes for hay are grown mostly as feed for livestock. Timber is regarded as an important cash income.

Several poultry processing plants also flourish in this area.

This page made possible through
the contribution of the following:

**Eastside Abstract Co.
Blackard Real Estate**

**Lloyd and Pat Cole
Hi, You-All**

**The Old Trading Post
Antiques and Junque**

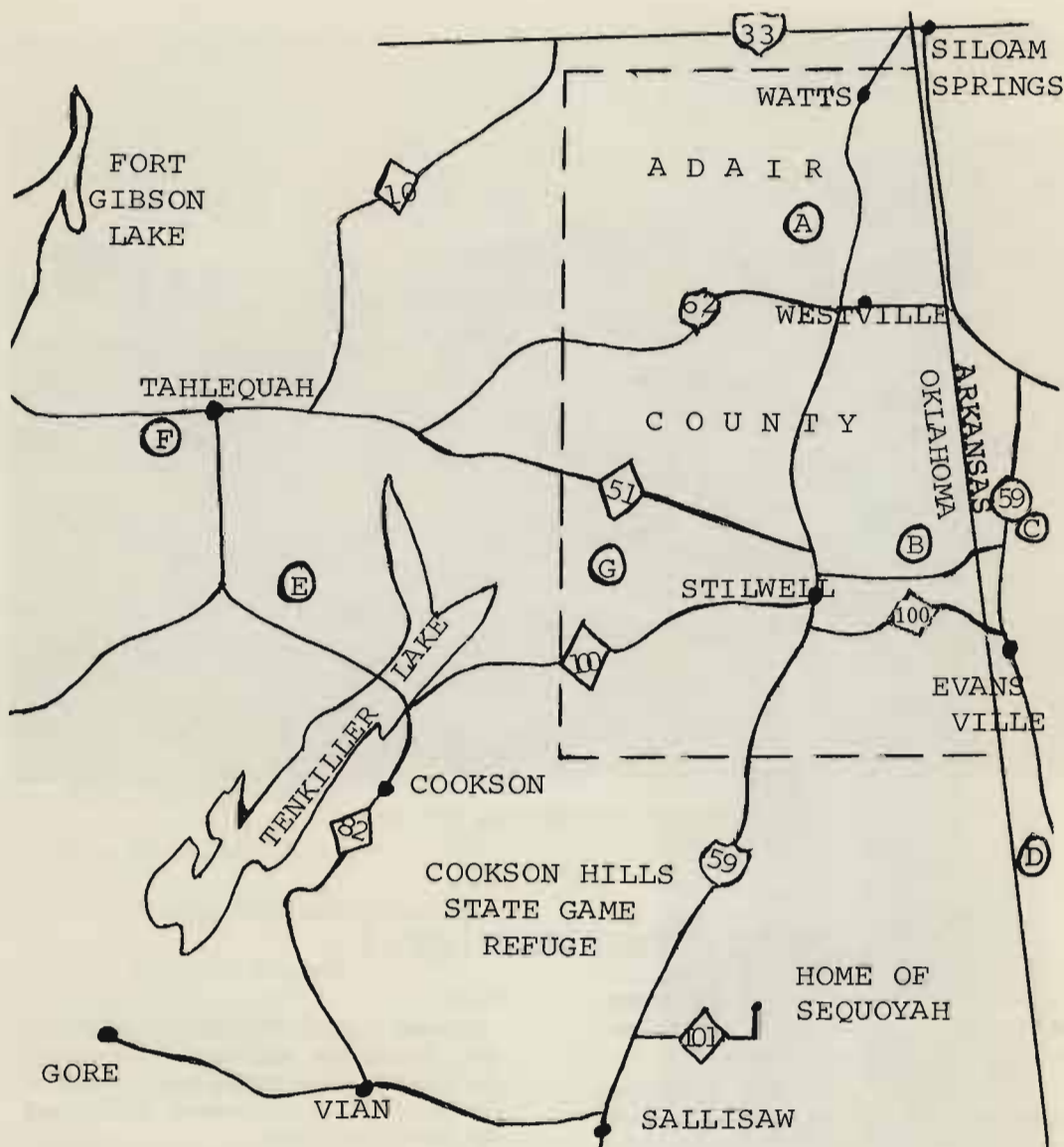
**Stilwell Auto Supply
Charles Hurlbut, Owner**

**Fletcher's Hardware
Ph. 774-7500**

**Ben Franklin
LeRoy and Helen Towry**

**Morris Locker and
Processing Plant**

**Worsham Tractor Co.
For Home & Power Needs**



All roads lead to Stilwell

- A. Old Baptist Mission
- B. Oldest home in Oklahoma
- C. Indian Museum
- D. Natural Dam

- E. Cherokee Center and
recreated village
- F. Cherokee Capital
- G. Golda's Mill

This page made possible through
the contribution of the following:

AAA Abstract Co., Inc.
Frank Garrett, Mgr. Stilwell

Kelley's Department Store
Welcome to Adair County

Reed's Hardware & Furniture
Sarah — Quinton — Gene

McSpadden Home Service
S&H Green Stamps on Cash Sales

Taystee Bread
Baked While You're Sleeping

Pepsi Cola
You've Got a Lot to Live

LOTS TO SEE

Come

Come to the "Green"
spectacular vistas at
Valleys, tree-covered
ited water fun.

Come, enjoy it all
crowded with color, a
to see and do. Visit
nearby communities,
sun, swim, fish, pl
sports. All this and
able climate.

The Illinois River,
through Adair Count



Rees
Treated P

LOTS TO SEE AND DO

Come to the 'Green Country'

Come to the "Green Country" and enjoy spectacular vistas at every turn.

Valleys, tree-covered mountains, unlimited water fun.

Come, enjoy it all—the best of Oklahoma, crowded with color, a wide variety of things to see and do. Visit colorful and historic nearby communities, enjoy the mountains, sun, swim, fish, play golf, enjoy water sports. All this and more in highly agreeable climate.

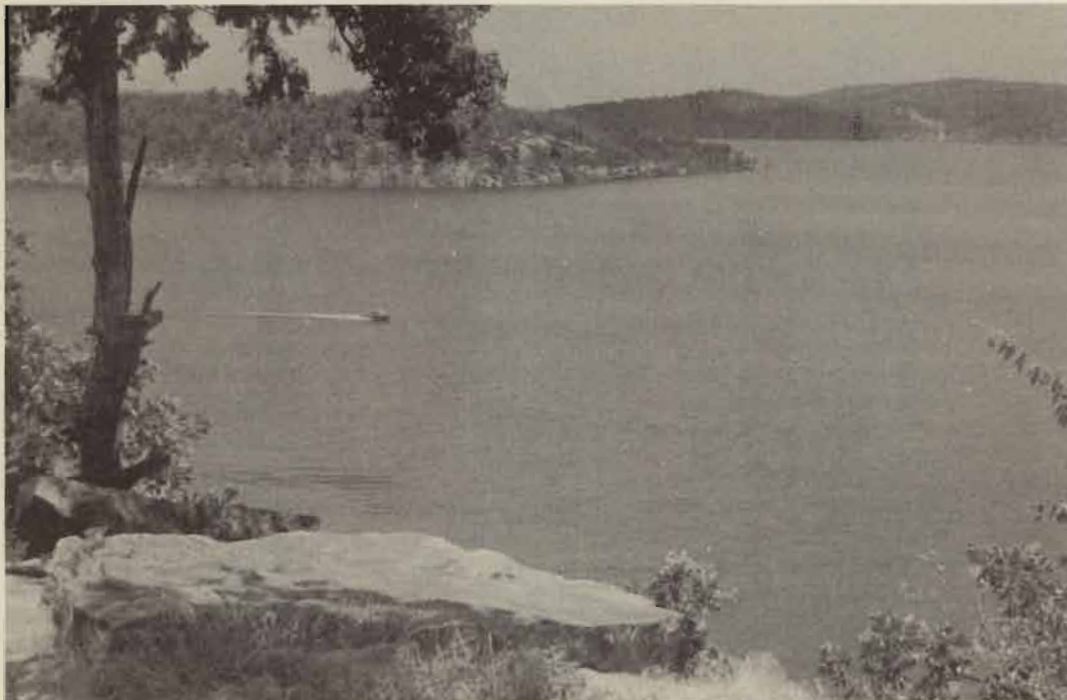
The Illinois River, which winds its way through Adair County, is the site of Kamp

Paddle Trails, west of Watts, the largest private camp for boys and girls in Oklahoma.

Beautiful Lake Tenkiller, located just a few minutes' drive west of Stilwell, is among the major attractions in this area.

Tenkiller Ferry Dam, which impounds water forming Lake Tenkiller, is located on the Illinois River near Gore. It was built by the Corps of Engineers in 1953 at a cost of \$23,822,000, principally for flood control, navigation and production of hydro-electric power.

Lake Tenkiller offers recreation



This page made possible through
the contributions of the following:

Reese Tie Co.
Treated Posts and Poles

Bruce-Rogers Company
Ft. Smith — Rogers, Ark.

Kansas City Southern Lines



**Carnation Ice Cream
is being furnished for the
Twenty-Fifth Annual Strawberry Festival
through courtesy of**

Stilwell Cafe
Worsham Grocery
Freeman's Food Center
Sav-U Discount Foods
Buzzard's Grocery
Saveway Grocery
Isaacs' Grocery
Midway Grocery
Stilwell Grocery
Philpott Grocery
Speedy Mart
Dairy Cup
Dairy Berry
Cliff's Drive-In

Midway Drive-In
Pearl's Grocery
Stilwell Nursing Home
Stilwell Municipal Hospital
Doc Beene's Restaurant
Peavine Grocery
Swede's Food Market
Piggly Wiggly
Claude King Grocery
Collins' Grocery
George's Fruit Market
Marie's Grocery
Luther's Grocery
Sheppard's Grocery

"For Contented Families"